

POWER AMPLIFIER

**XP 2000 / 2000B**

# SERVICE MANUAL



**PHONIC**  
WWW.PHONIC.COM



POWER AMPLIFIER

**XP 2000 / 2000B**

**SERVICE MANUAL**

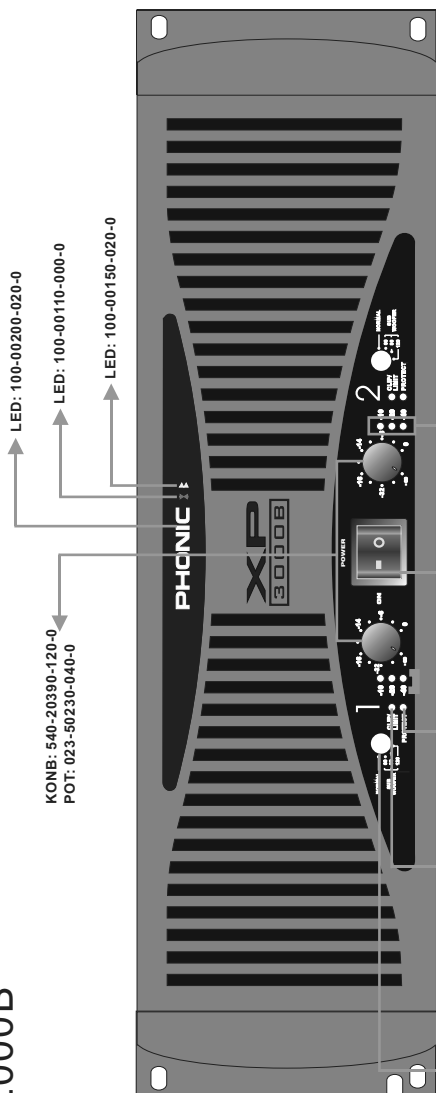
**CONTENTS**

<b>PANEL LAYOUT.....</b>	<b>4</b>	<b>CH1 / CH2 CONTROL PCB.....</b>	<b>19</b>
<b>SYSTEM BLACK DIAGRAM.....</b>	<b>5</b>	CH1 / CH2 CONTROL SCHEMATIC-1.....	20
<b>POWER AMPLIFIER PCB.....</b>	<b>6</b>	CH1 / CH2 CONTROL SCHEMATIC-1.....	21
AMPLIFIER INPUT SCHEMATIC.....	7	CH1 / CH2 CONTROL SCHEMATIC-1.....	22
AMPLIFIER OUTPUT SCHEMATIC.....	8	<b>MISCELLANEOUS ITEMS.....</b>	<b>25</b>
POWER AMPLIFIER SCHEMATIC.....	9	<b>POWER REQUIREMENT CLASSIFICATION....</b>	<b>29</b>
POWER AMPLIFIER PCB-PART LIST....	10	<b>DIMENSIONS.....</b>	<b>31</b>
<b>POWER SUPPLY PCB.....</b>	<b>14</b>		
POWER SUPPLY SCHEMATIC-1.....	15		
POWER SUPPLY SCHEMATIC-2.....	16		
POWER SUPPLY PCB-PART LIST.....	17		

Phonic reserves the right to improve or alter any information supplied within this document without prior notice.

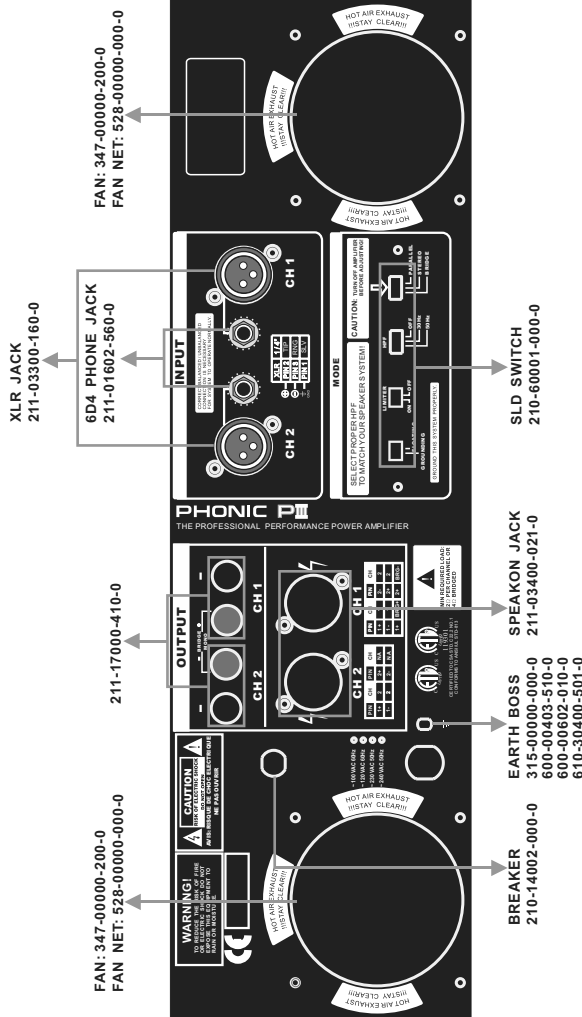
V1.1  
08/09/02

Xp 2000/2000B



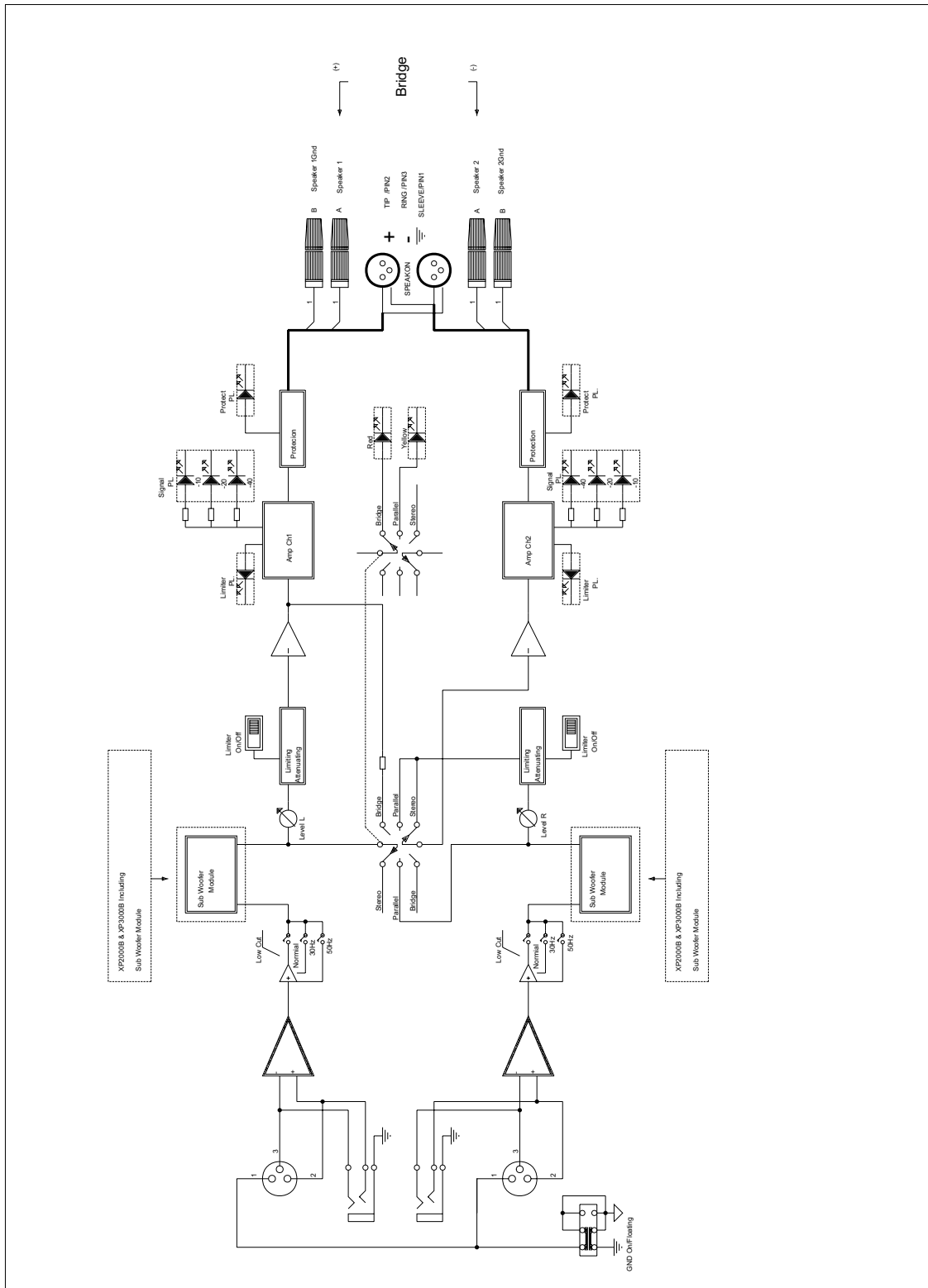
KONB: 540-20390-120-0  
 POT: 023-50230-040-0  
 LED: 100-00200-020-0  
 LED: 100-00110-000-0  
 LED: 100-00150-020-0

KONB: 540-20380-120-0  
 SWITCH: 210-00204-050-0  
 CLIP / LIMIT LED 100-00010-030-0  
 PROTECT LED 100-00040-000-0  
 POWER SWITCH 210-03101-070-0  
 -10/-20/-40 LED 100-00050-000-0

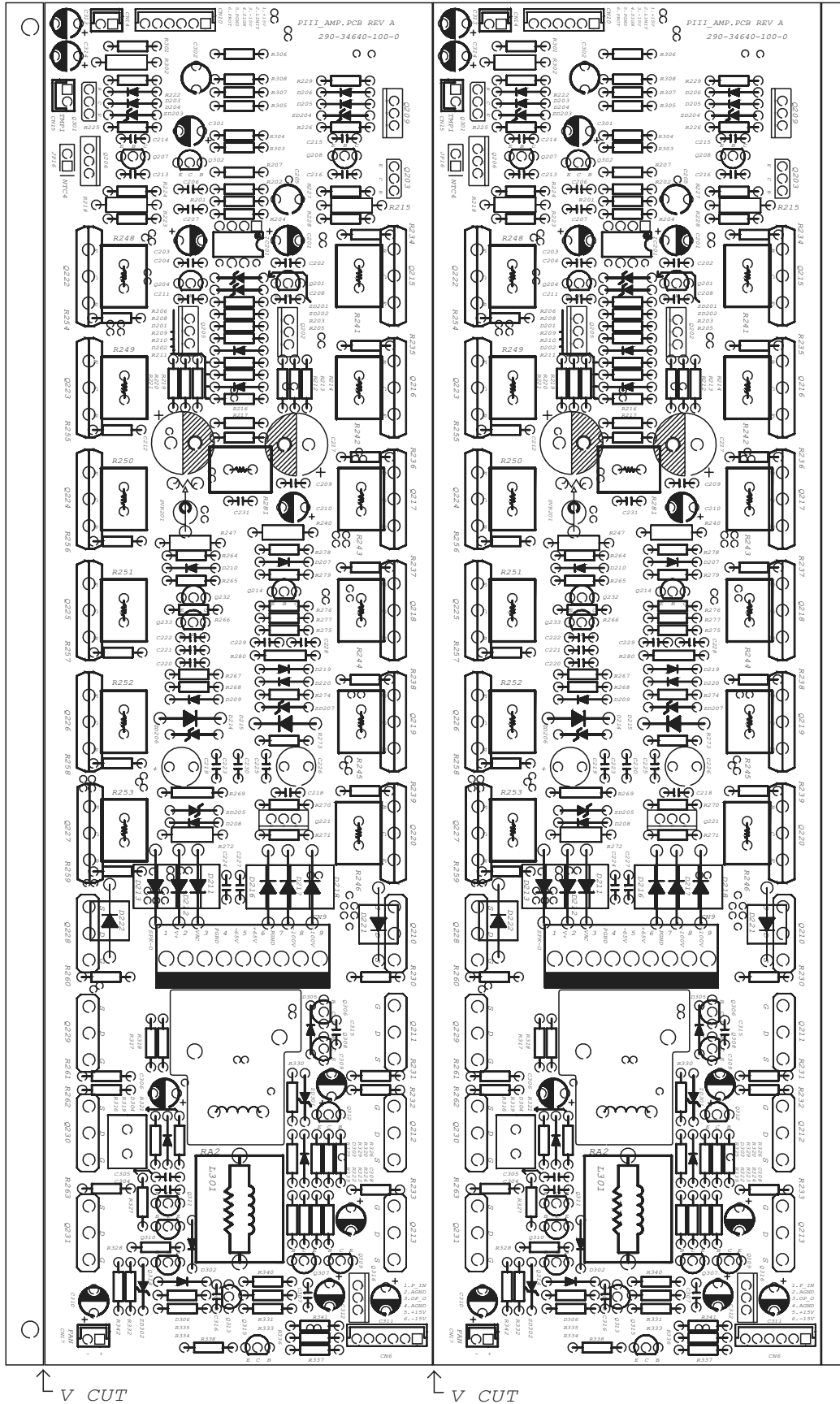


FAN: 347-00000-200-0  
 FAN NET: 528-00000-000-0  
 XLR JACK 211-03300-160-0  
 6D4 PHONE JACK 211-01602-560-0  
 FAN: 347-00000-200-0  
 FAN NET: 528-00000-000-0  
 211-17000-410-0  
 BREAKER 210-14002-000-0  
 EARTH BOSS 315-00000-000-0  
 600-00403-510-0  
 600-00602-010-0  
 610-30400-501-0  
 SPEAKON JACK 211-03400-021-0  
 SLD SWITCH 210-60001-000-0

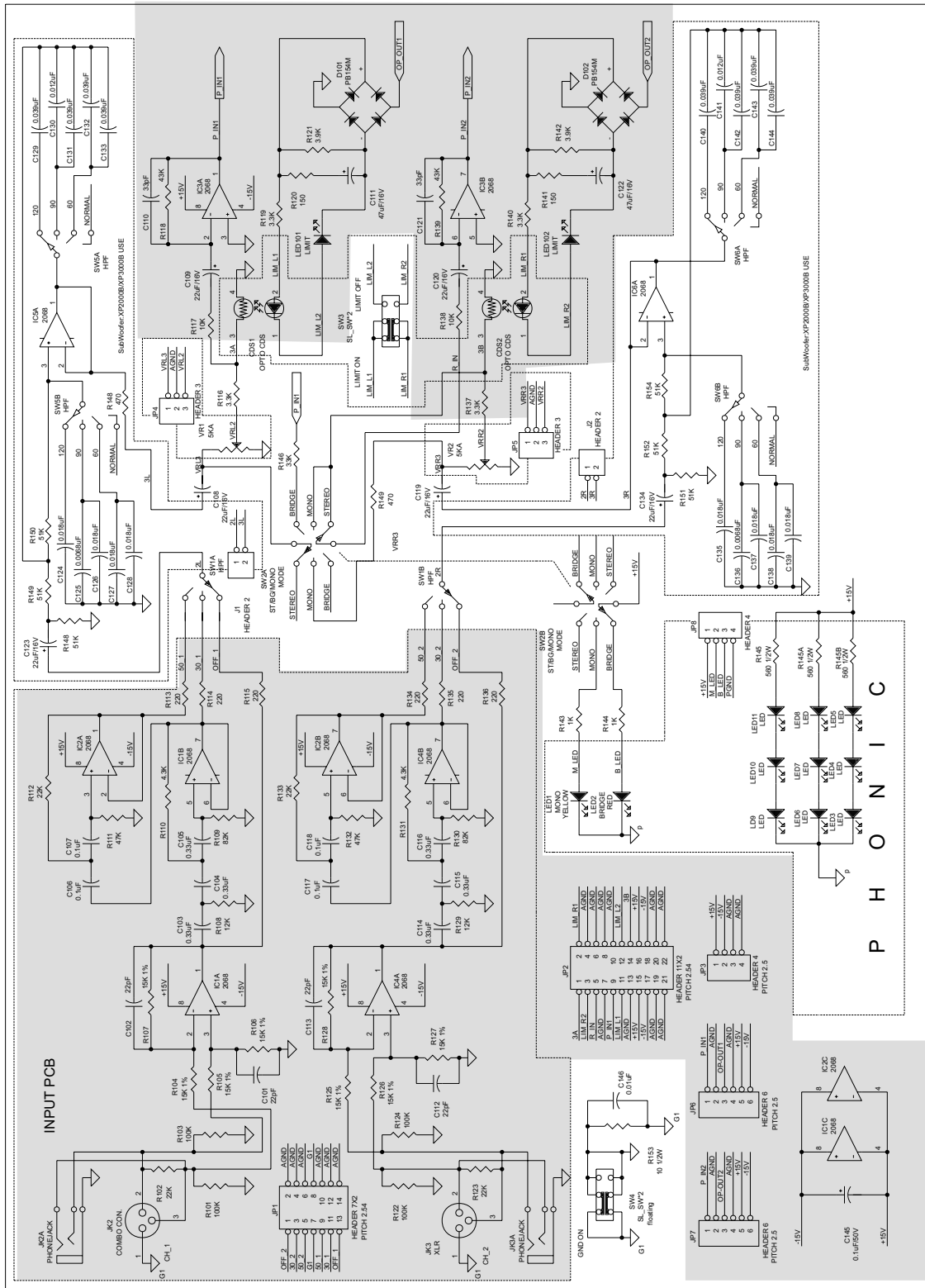
SYSTEM BLOCK DIAGRAM



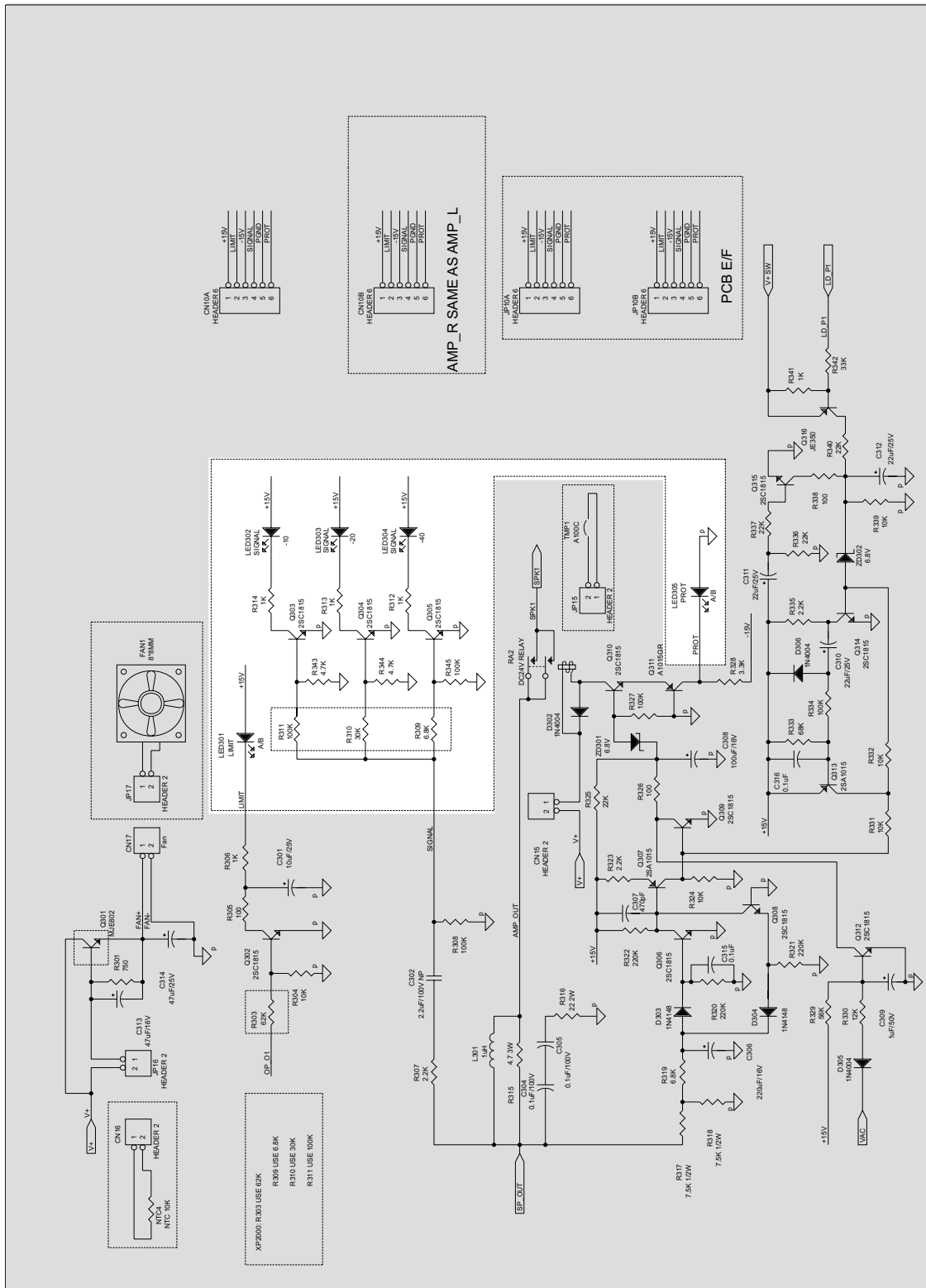
POWER AMPLIFIER PCB



AMPLIFIER INPUT SCHEMATIC

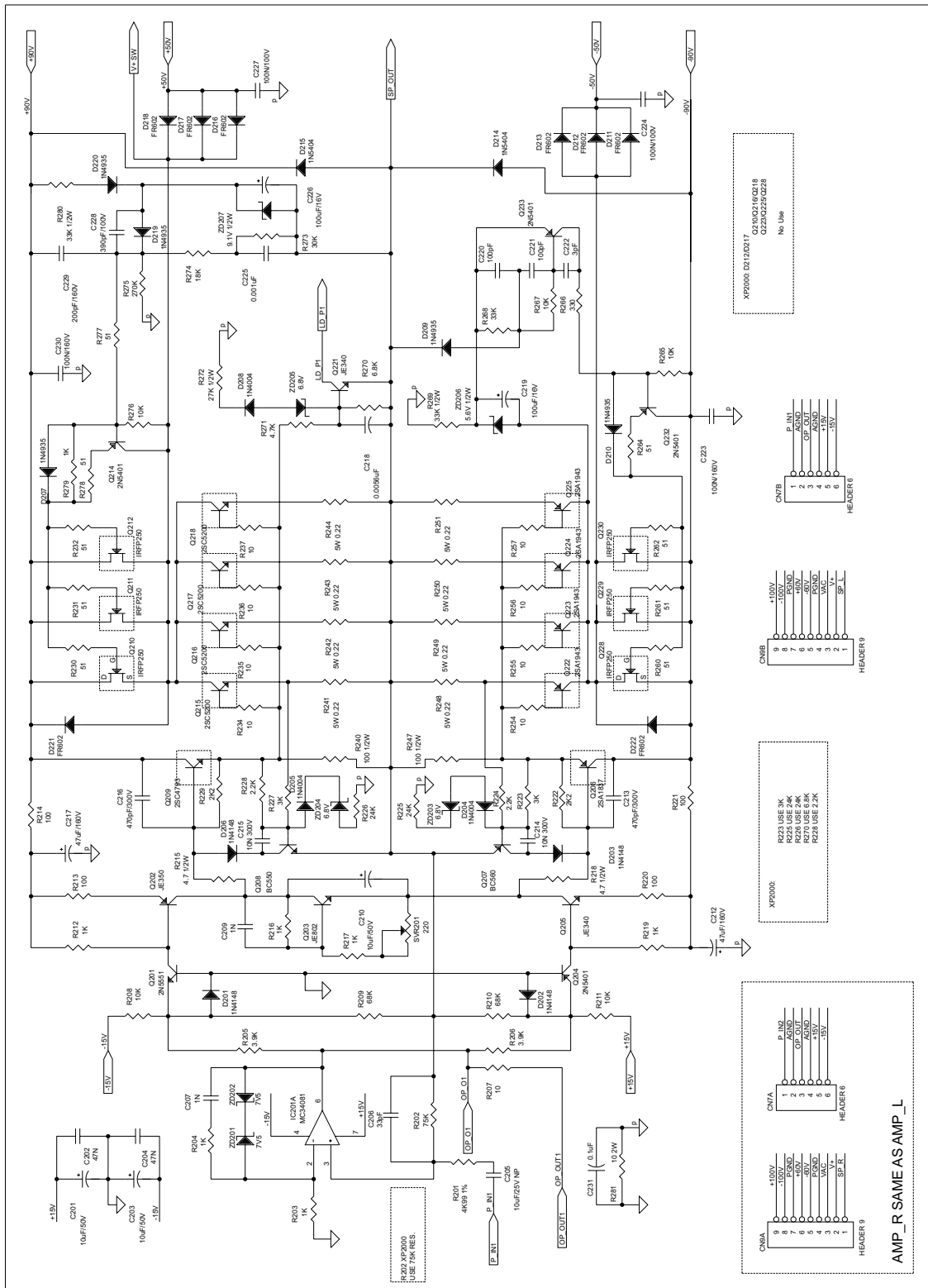


AMPLIFIER OUTPUT SCHEMATIC





POWER AMPLIFIER SCHEMATIC



## POWER AMPLIFIER PCB-PART SCHEMATIC

Ref.	Phonic Part No.	Specifications
R281	003-10071-602-0	CEMENT RES. 10 J 2W P
R316	003-22071-602-0	CEMENT RES. 22 J 2W
R241.243.245.246.248.250.252. 253	003-22093-602-0	CEMENT RES. 0.22 J 5W
R240.247	006-10003-420-0	MF RES. 100F 0.5W M
R234.236.238.239.254.256.258. 259	006-10072-420-0	MF RES. 10F 0.25W M
R272	006-27023-420-0	MF RES.27K F 0.5W M
R269.280	006-33023-420-0	MF RES.33K F 0.5W M
R215.218	006-47083-420-0	MF RES. 4.7 F 0.5W M
R231.232.233.261.262.263	006-51072-420-0	MF RES. 51F 0.25W M
NTC4	011-10020-001-0	THERMISTER NSA05C310-301
SVR201	020-47138-000-6	T/VR 470J T-085C-B470 0.5W
C212.217	030-47695-000-0	E/C 47MF K 160V P
L301	075-10082-100-0	INDUCTANCE 1UH K M
RA2	076-02411-001-0	RELAY T9AS1D12-24 (02182)
D204.205.302.305.306	090-00007-020-0	DIODE IN4004 SILTEK T
D214.215	090-00016-000-0	DIODE 1N5404
D207-210.219.220	090-02004-000-0	DIODE 1N4935 T
D211.213.216.218.221.222	090-02007-000-0	DIODE FR602
Q205.221	120-00005-000-0	TRAN MJE340 MOTOROLA
Q215.217.219.220	120-00008-600-0	TRAN 2SC5200-O TOSHIBA
Q203.301	120-00008-800-0	TRAN MJE802 MOTOROLA
Q209	120-00009-500-0	TRAN 2SC4793-M TOSHIBA
Q222.224.226.227	121-00006-000-0	TRAN 2SA1943-O TOSHIBA
Q202.316	121-00006-100-0	TRAN MJE350 MOTOROLA

## POWER AMPLIFIER PCB-PART LIST

Ref.	Phonic Part No.	Specifications
Q206	121-00007-200-0	TRAN 2SA1837-M TOSHIBA
Q211.212.213.229.230.231	122-00002-500-0	MOSFET IRFP250
IC201	160-00021-900-0	IC NJM5534D JRC
	210-10090-001-0	TMP/SW US-602SXRFC
CN17	211-10021-150-0	2P WAFER/S 5267 A2505 WV P=2.5MM 180°
CN15	211-10021-161-0	2P WAFER/S TJC3-2A P=2.5MM 180°
CN6.10	211-10061-171-0	6P WAFER/S TJC3-6A P=2.5mm
CN9	211-10093-000-0	9P WAFER/S 3.96MM
	212-10023-440-0	2P WAFER/P 100MM
	313-00000-000-0	TRANSISTOR WASHER TO-220
Q211.212.216.229.230.231	313-00010-000-0	WASHER TO-3P
	526-20052-010-0	HEAT SINK PIII2000/3000 265*80*77MM
	552-20061-400-0	FIXED BRKT PIII2000/3000 135*26*1.9
	552-20062-400-0	FIXED BRKT PIII2000/3000 77.3*20*1.9
FIX TRANSISTOR*4 THERMAL SWITCH*2	590-43012-100-0	M/E PAN SCR. M3.0*12 NI
FIX TRANSISTOR*14	590-43014-100-0	M/E PAN SCR M3.0*14 NI
FIX THERMAL RES*1	591-54008-100-0	T/P SET SCR. D4.0*8 NI
	610-00300-501-0	PLA. WAS. D3.0*D7.0*0.5 NI
	610-60300-501-0	PAN SPR. WAS D3.0*D7*0.5 NI
PANEL	610-60401-001-0	PAN SPR.WAS.D4*7.6*1.0 NI
R213.214.220.221.305.326.338	006-10002-420-0	MF RES. 100 F 0.25W M
R203.204.212.216.217.219.279. 306	006-10012-420-0	MF RES. 1K F 0.25W M
R208.211.265.267.276.304.324. 331.332.339	006-10022-420-0	MF RES. 10K F 0.25W M

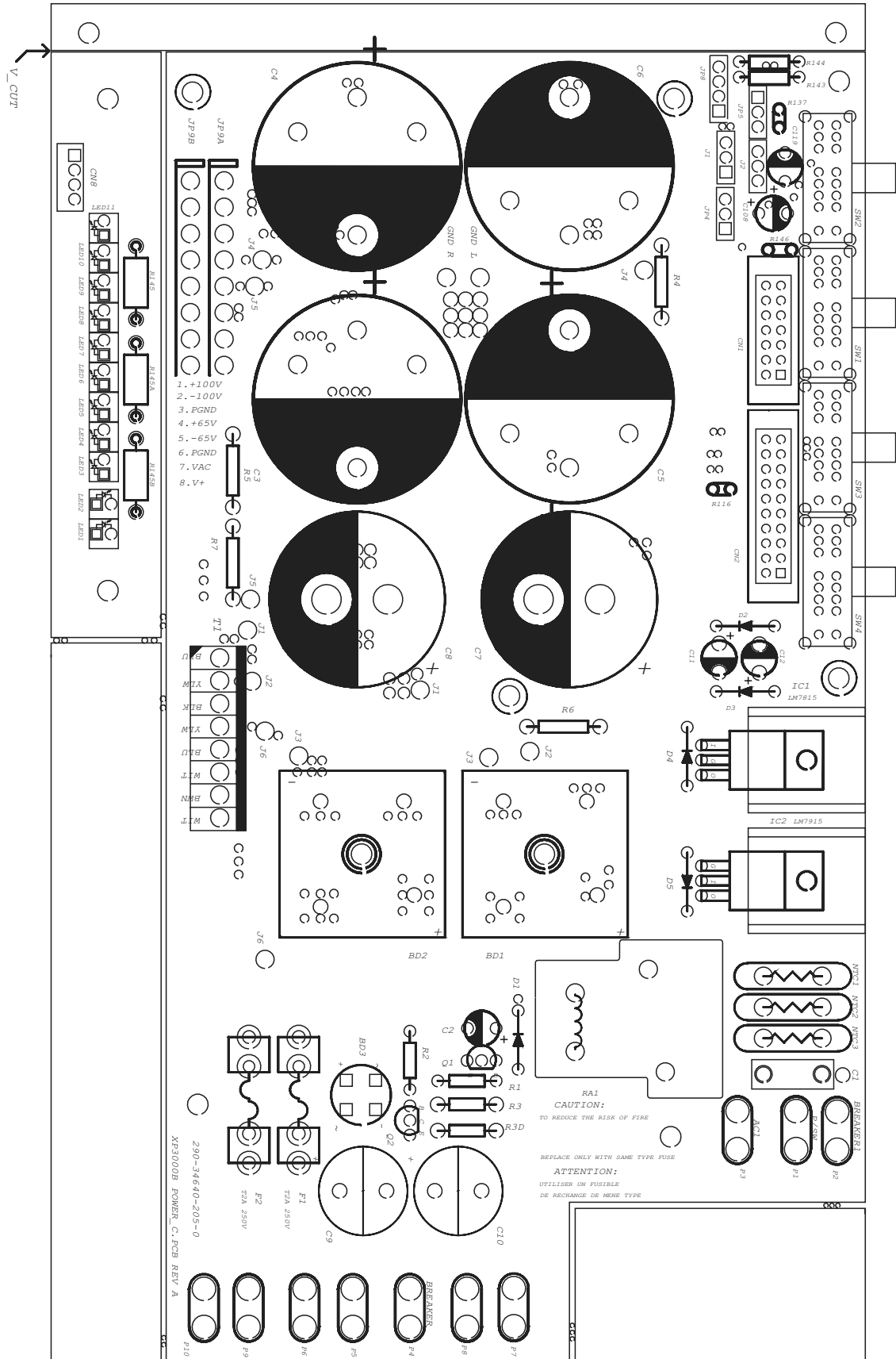
## POWER AMPLIFIER PCB-PART SCHEMATIC

Ref.	Phonic Part No.	Specifications
R308.327.334	006-10032-420-0	MF RES. 100K F 0.25W M
R207	006-10072-420-0	MF RES. 10F 0.25W M
R330	006-12022-420-0	MF RES. 12K F 0.25W M
R341	006-15012-420-0	MF RES. 1K5 F 0.25W M
R274	006-18022-420-0	MF RES. 18K F 0.25W M
R222.224.228.229.307.323.335	006-22012-420-0	MF RES. 2K2 F 0.25W M
R325.336.337.340	006-22022-420-0	MF RES. 22K F 0.25W M
R320.321.322	006-22032-420-0	MF RES. 220K F 0.25W M
R225.226	006-24022-440-0	MF RES. 24K F 0.25W T
R275	006-27032-420-0	MF RES. 270K F 0.25W M
R223.227	006-30012-440-0	MF RES. 3K F 0.25W T
R.273	006-30022-420-0	MF RES. 30K F 0.25W M
R266	006-33002-420-0	MF RES. 330 F 0.25W M
R328	006-33012-410-0	MF RES. 3K3 F 0.25W P
R268.342	006-33022-420-0	MF RES. 33K F 0.25W M
R205.206.317.318	006-39012-420-0	MF RES. 3K9 F 0.25W M
R271	006-47012-420-0	MF RES. 4K7 F 0.25W M
R201	006-49912-420-0	MF RES. 4K99 F 0.25W M
R264.277.278	006-51072-420-0	MF RES. 51F 0.25W M
R301	006-56002-420-0	MF RES. 560 F 0.25W M
R329	006-56022-420-0	MF RES. 56K F 0.25W M
R303	006-62022-420-0	MF RES. 62K F 0.25W M
R270.319	006-68012-420-0	MF RES. 6K8 F 0.25W M
R209.210.333	006-68022-420-0	MF RES. 68K F 0.25W M
R301	006-75002-420-0	MF RES.750 F 0.25W M
R202	006-75022-420-0	MF RES. 75K F 0.25W T
C309	030-10558-0A0-0	E/C 1MF Z 50V 5*11 T
C301	030-10638-0A0-0	E/C 10MF Z 25V 5*11 T
C201.203.210	030-10656-0A0-0	E/C 10MF M 50V 5*11 T
C219.226.308	030-10728-0A0-0	E/C 100MF Z 16V 6*11 T
C310.311.312	030-22638-0A0-0	E/C 22MF Z 25V 5*11 T
C306	030-22728-0A0-0	E/C 220MF Z 16V 8*11 T
C313.314	030-47638-0A0-0	E/C 47MF Z 25V 6*11 T
C205	032-10636-0A0-0	NP E/C 10MF M 25V 6.3*11 T
C302	032-22586-0A0-0	NP E/C 2.2MF M 100V 6*11 T

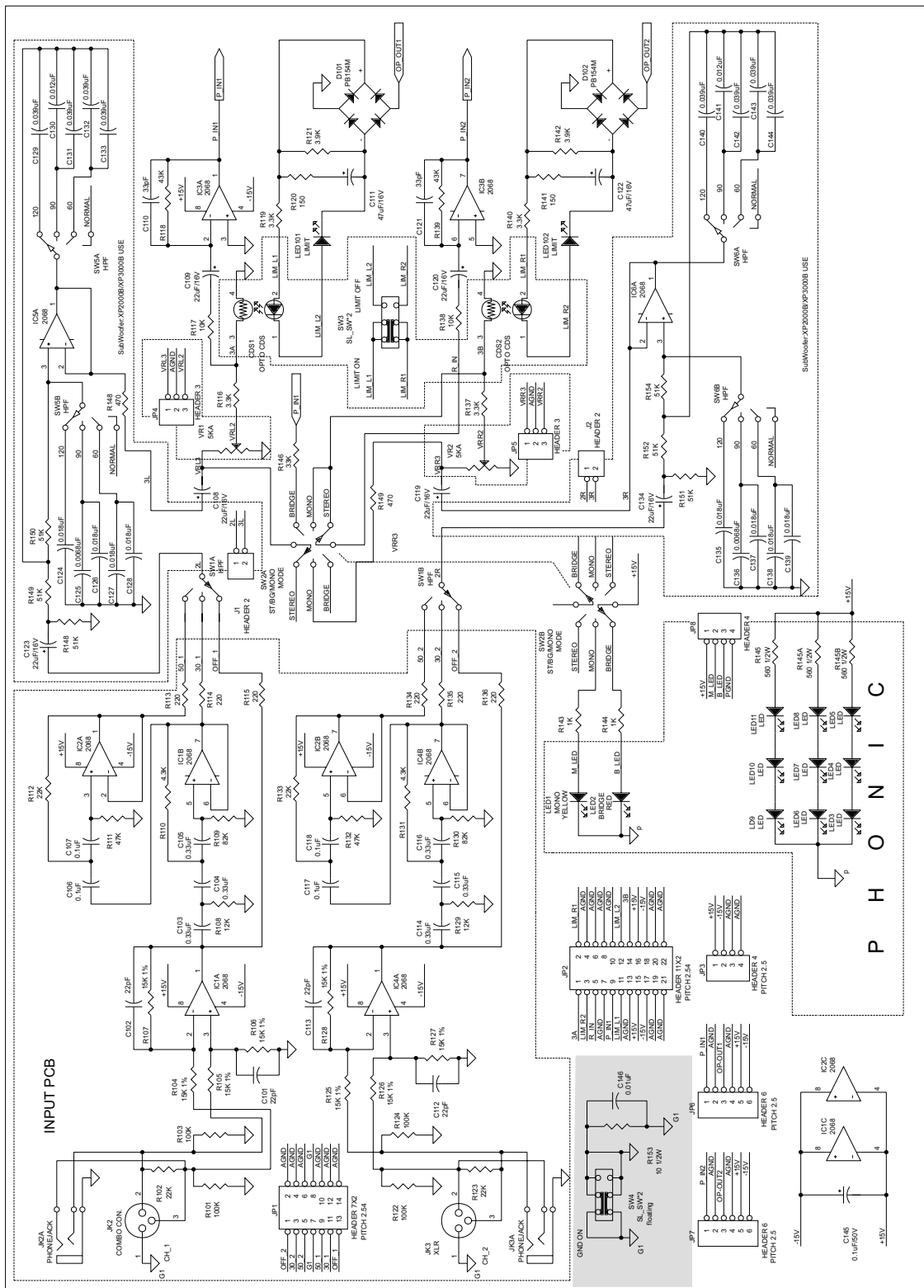
## POWER AMPLIFIER PCB-PART LIST

Ref.	Phonic Part No.	Specifications
C222	042-03020-000-0	C/C2 3PF C 50V 5
C220.221	042-10124-050-0	C/C2 100PF J 50V T
C207.209.225	042-10225-050-0	C/C2 0.001MF K 50V 5 T
C214.215	042-10345-160-6	C/C2 0.01UF K 100V T
C231.315.316	042-10426-050-0	C/C2 0.1MF M 50V 5 T
C223.224.227.230	042-104A8-000-0	C/C2 0.1MF Z 250V 5
C229	042-201A5-000-0	C/C2 200PF K 250V
C206	042-33024-050-0	C/C2 33PF J 50V 5 T
C228	042-391A4-050-0	C/C2 390PF J 250V 5 T
C307	042-47124-050-0	C/C2 470PF J 50V 5 T
C213.216	042-47164-050-0	C/C2 470PF J 350V 5 T
C202.204	042-47325-050-0	C/C2 0.047MF K 50V 5 T
C218	042-56224-050-0	C/C2 0.0056MF J 50V T
C304.305	046-10414-060-0	M/C 0.1MF J 100V 5 T
ZD207	090-01123-000-0	ZEN/DIODE 12V J 0.5W UNIZON
ZD203.204.205.301.302	090-01682-000-0	ZEN/DIODE 6.8V J0.5W UNIZO
ZD201.202	090-01752-010-0	ZEN/DIODE 7V5 K 0.5W FAIRCH
ZD206	090-01912-000-0	ZEN/DIODE 9.1V J 0.5W FAI
D201.202.203.206.303.304	090-02000-020-0	DIODE 1N4148 T
Q302.306.308.309.310.312.314. 315	120-00000-800-0	TRAN. 2SC1815 GR TOSHIBA
Q201	120-00001-400-0	TRAN. 2N5551 MOTOROLA
Q208	120-00009-700-0	TRAN. BC546B PHILIPS(BC550)
Q307.311.313	121-00000-200-0	TRAN. 2SA1015 GR TOSHIBA
Q204.214.232.233	121-00000-300-0	TRAN. 2N5401 MOTOROLA
Q207	121-00007-500-0	TRAN. BC556B PHILIPS (BC560)
	290-34640-101-0	PIII2000/3000(B) A+B AMP

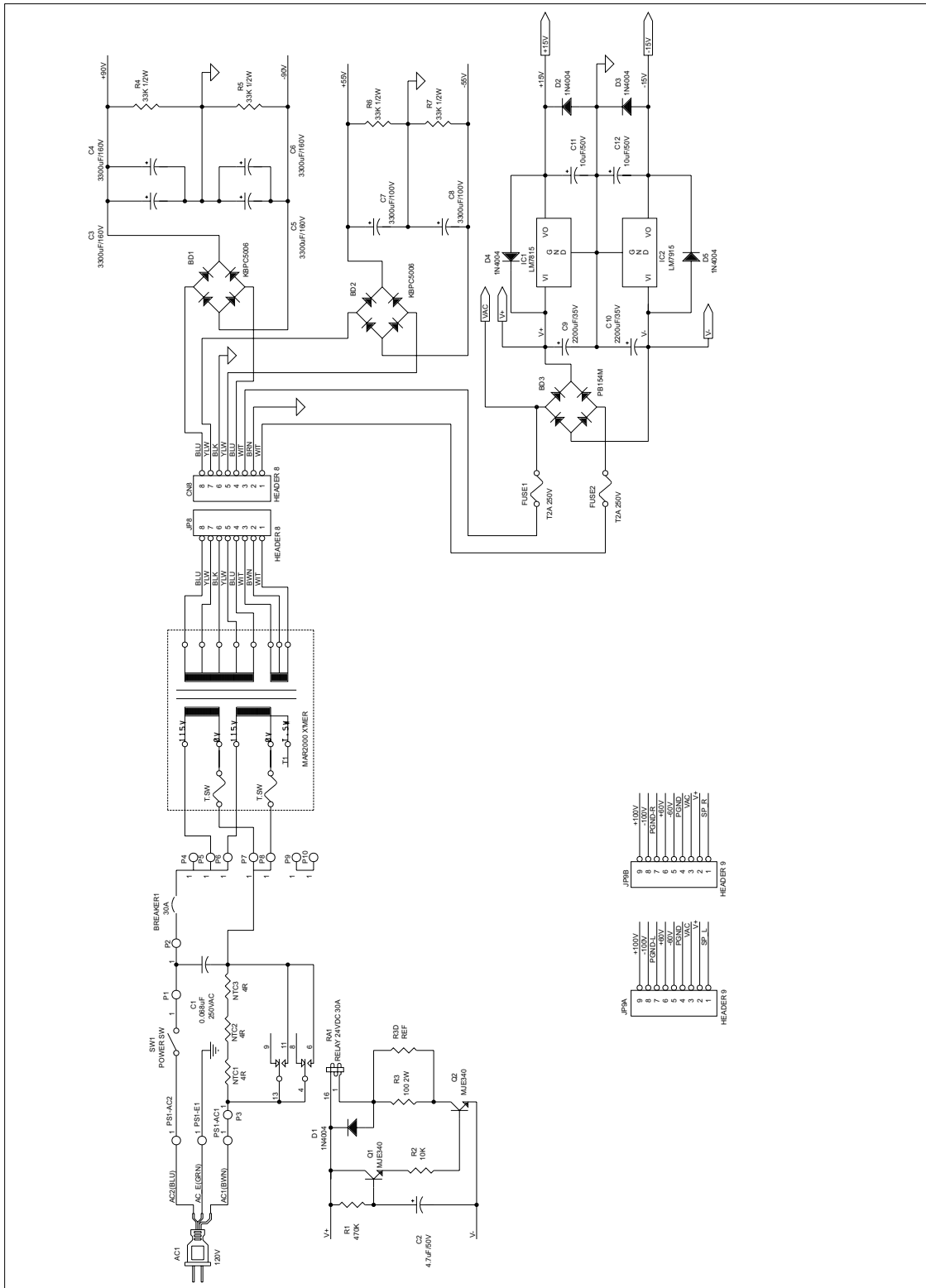
POWER SUPPLY PCB



POWER SUPPLY SCHEMATIC-1



POWER SUPPLY SCHEMATIC-2





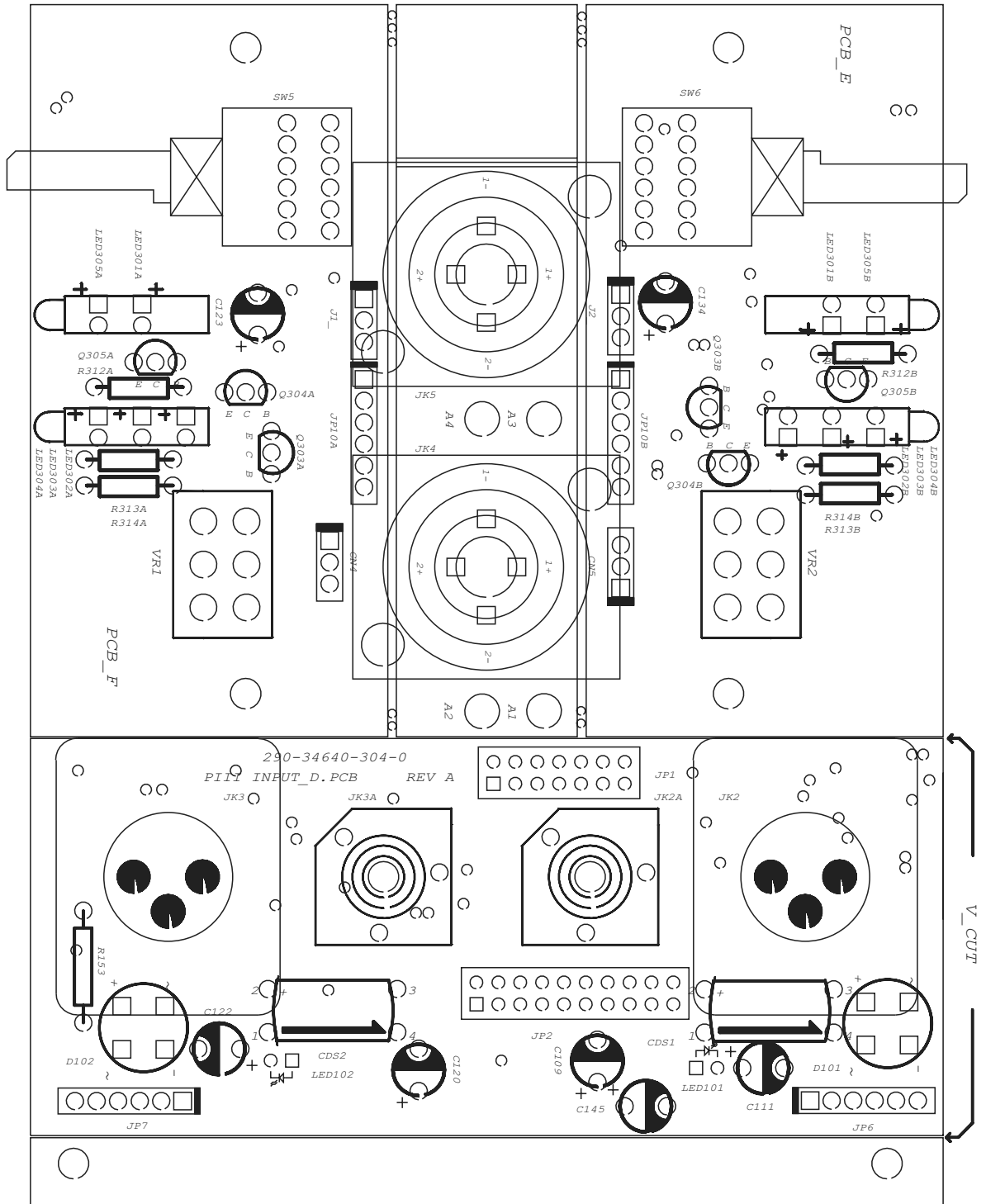
## POWER SUPPLY PCB-PART LIST

Ref.	Phonic Part No.	Specifications
R3	005-10127-100-0	MOF RES. 100OHM 2W P
R4.5.6.7	006-33023-420-0	MF RES.33K F 0.5W M
R145.145A.145B	006-56003-420-0	MF RES. 560 F 0.5W M
NTC1.2.3	012-400B0-000-0	NTC THERMISTORS N15SP004
C9.10	030-22848-002-0	E/C 2200MF Z 35V 16*27 P
C3.4.5.6	030-33896-000-0	E/C 3300UF 160V M 35*65
C7.8	030-47888-032-6	E/C 4700UF M 100V 30*63 105°C
C1	058-68325-100-0	MEX-683K 0.068MF/250V 18*13.5 P=15
RA1	076-02411-001-0	RELAY T9AS1D12-24 (02182)
D1.2.3.4.5	090-00007-020-0	DIODE IN4004 SILTEK T
BD3	090-10000-000-0	B/DIODE PB154
BD1.2	090-10016-000-0	B/DIODE KBPC5006
LED2	100-00110-000-0	LED BL-R5132N RED
LED1	100-00150-020-0	LED LG5120 GRN
LED3-11	100-00240-020-0	LED 5*5mm YLW
Q1.2	120-00005-000-0	TRAN MJE340 MOTOROLA
IC2	160-00002-909-0	IC 7915
IC1	160-00005-909-0	IC 7815
SW1.2.3.4	210-60001-000-0	SLD/SW SLD-43-10
CN1	211-09142-000-0	14P B.E./S 180°
CN2	211-09202-000-0	20P B.E./S 180°
CN8	211-10041-140-0	4P WAFER/S 2532-04
T1	211-10084-020-0	8P WAFER/S 396108 180 P=3.96MM
SPK-GND	212-10010-700-0	1P WAFER/P 200MM UL1015#14 BLK
SPK-GND	212-10010-710-0	1P WAFER/P 250MM UL1015#14 BWN
JP5	212-10032-480-0	3P WAFER/P 520MM (PITCH=2.5MM)

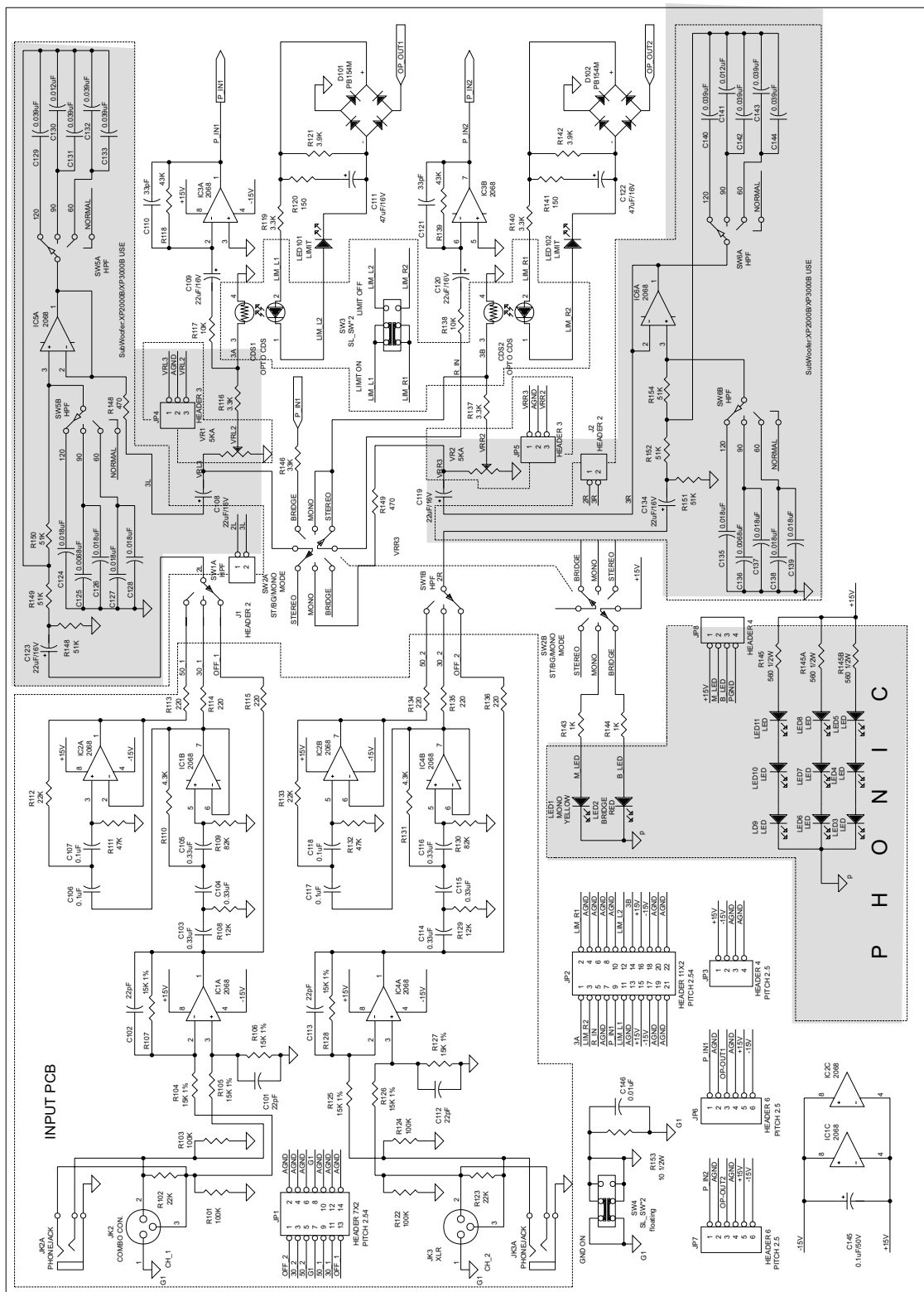
## POWER SUPPLY PCB-PART LIST

Ref.	Phonic Part No.	Specifications
J2	212-10032-480-6	3P WAFER/P 520MM
JP4	212-10032-490-0	3P WAFER/P 440MM
J1	212-10032-490-6	3P WAFER/P 440MM
JP8	212-10041-220-0	4P WAFER/P 500MM
JP9A	212-10090-440-0	9P WAFER/P 250MM UL1015#16 PITCH=3.96MM
JP9B	212-10090-450-0	9P WAFER/P 350MM UL1015#16 PITCH=3.96MM
FUSE1*2.FUSE2*2	281-00000-020-0	FUSE CLIP FH-1206
FIX IC1.2	313-00000-060-0	RUBBER WASHER TO-2203
FIX IC1.2	314-00000-050-0	BUSHES 602S(V.0) 180°
P1-10	315-00012-000-0	LUG PIN JP-15
IC1.2	526-20040-010-0	U HEAT.SINK POD1860 20*18
KBPC5006	526-20046-011-0	HEAT SINK XP3000 36.5*56.2*40
KBPC5006	590-24020-200-0	M/E BID SCR. M4*20 BLK
	590-53010-100-0	M/E SET SCR. M3.0*10 NI
	600-00302-010-0	HEX. NUT M3.0*2.0 NI
	610-60300-700-0	PAN SPR WAS. D3.0*6.0*0.7ZN
	610-60401-001-0	PAN SPR. WAS. D4*7.6*1.0 NI
LED1.2	615-10054-620-0	LED BOSS L=6MM
R143.144	006-10012-420-0	MF RES. 1K F 0.25W M
R2	006-10022-420-0	MF RES. 10K F 0.25W M
R116.137	006-33011-400-0	MF RES. 3K3 F 0.125W T
R146	006-33022-420-0	MF RES. 33K F 0.25W M
R1	006-47032-420-0	MF RES. 470K F 0.25W M
C11.12	030-10656-0A0-0	E/C 10MF M 50V 5*11 T
C108.119	030-22628-0A0-0	E/C 22MF Z 16V 5*11 T
C2	030-47558-0A0-0	E/C 4.7MF Z 50V 5*11 T
	290-34640-205-0	XP3000 C+G PWR+LED PCB
J1.2	382-20002-510-0	TINNER WIRE 2.5MM D0.6

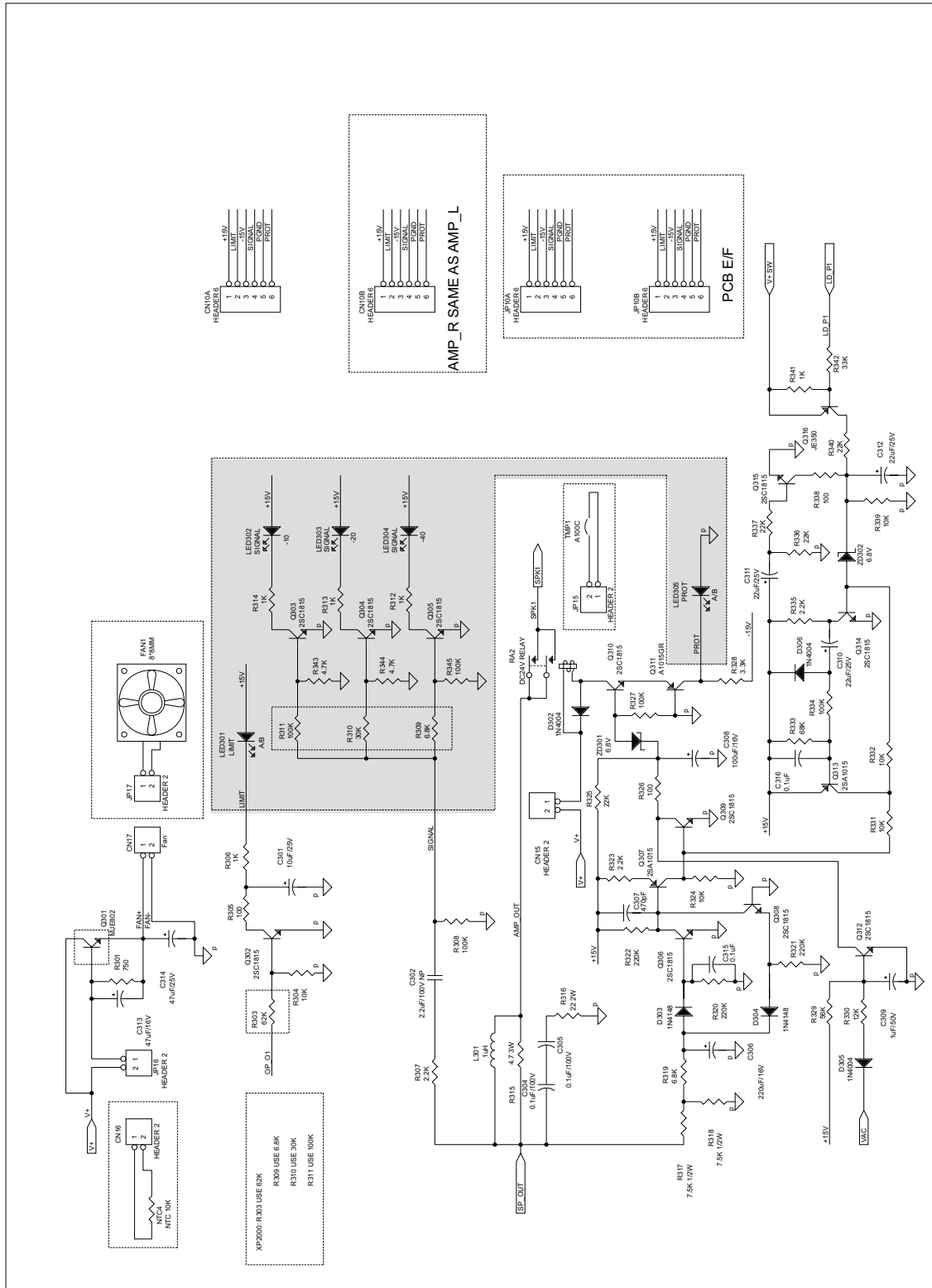
Ch1 / Ch2 CONTROL PCB



POWER AMPLIFIER PCB-PART SCHEMATIC



Ch1 / Ch2 CONTROL SCHEMATIC-1



## Ch1 / Ch2 CONTROL PCB-PART LIST

Ref.	Phonic Part No.	Specifications
CDS1.2	010-00001-010-0	CDS P873-G35-552 HAMAMATSU
VR1.2	023-50230-040-0	D.ROT/VR 5KA 20MM P
D101.102	090-10000-000-0	B/DIODE PB154
LED101.102.301A.301B	100-00010-030-0	LED BL-B5141 RED
LED305A.305B	100-00040-000-0	LED 204YD YLW
LED302A.302B.303A.303B. 304A.304B	100-00050-000-0	LED BL-B2141 GRN
SW5.6	210-00204-050-0	ROT/SW BTSR16H-14N-S25
DJK2A.3A	211-01602-560-0	6D4/J YLJ-6405-300 (NUT&WASHER)
JK2.3	211-03300-160-0	XLR/J SKCA229-1K3F2
JK4.5	211-03400-021-0	SPEAKON/J SVP563S-CH
CN4.5,J1.2	211-10031-170-0	3P WAFER/S 2532-03 (PITCH:2.5MM)
SPEAKON	212-10010-680-0	1P WAFER/P 80MM UL1015#14 BLK
SPEAKON	212-10010-690-0	1P WAFER/P 80MM BWN
SPEAKON	212-10010-720-0	1P WAFER/P 80MM UL1015#14 RED
SPEAKON	212-10010-730-0	1P WAFER/P 80MM UL1015#14 ORANGE
JP10A	212-10061-310-0	6P WAFER/P 170MM UL1007#24 PH=2.5MM
JP10B	212-10061-320-0	6P WAFER/P 220MM UL1007#24 PH=2.5MM
JP6.7	212-10061-330-0	6P WAFER/P 220MM UL1007#24
JP1	212-11214-000-0	IC/P 120MM
JP2	212-11220-000-0	IC/P 120MM PIII2000/3000 PH=2.54MM
	615-20104-620-0	LED HOLDER 3LED-3
R117.138	008-01032-600-0	CHIP RES. 10K J 0603

**Ch1 / Ch2 CONTROL PCB-PART LIST**

<b>Ref.</b>	<b>Phonic Part No.</b>	<b>Specifications</b>
R101.103.122.124.345A.345B. 311A.311B	008-01042-600-0	CHIP RES. 100K J 0603
R108.129	008-01232-600-0	CHIP RES. 12K J 0603
R120.141	008-01512-600-0	CHIP RES. 150 J 0603
R104-107.125-128	008-01532-600-0	CHIP RES. 15K J 0603
R113.114.115.134.135.136	008-02212-600-0	CHIP RES. 220 J 0603
R102.112.123.133	008-02232-600-0	CHIP RES. 22K J 0603
R310A.310B	008-03032-600-0	CHIP RES 30K SMT J 0603 PKG
R119.140	008-03322-600-0	CHIP RES. 3.3K J 0603
R121.142	008-03922-600-0	CHIP RES. 3.9K J 0603
R110.131	008-04322-600-0	CHIP RES. 4.3K J 0603
R118.139	008-04332-600-0	CHIP RES. 43KJ 0603
R148.149	008-04712-600-0	CHIP RES. 470J 0603
R343A.343B.344A.344B	008-04722-600-0	CHIP RES. 4.7K J 0603
R111.132	008-04732-600-0	CHIP RES. 47K J 0603
R150.151.152.154.155.156	008-05132-600-0	CHIP RES. 51K J 0603
R309A.309B	008-06822-600-0	CHIP RES. 6K8 J 0603
R109.130	008-08232-600-0	CHIP RES. 82K J 0603
C146	039-10324-220-0	CHIP C/C 0.01MF J 50V 0603
C106.107.117.118	039-10405-220-0	CHIP C/C 0.1UF K 16V 0603
C130.141	039-12325-220-0	CHIP C/C 0.012UF 50V K 0603 X7R
C124.126.127.128.135.137.138. 139	039-18325-220-0	CHIP C/C 0.018UF 50V K 0603 X7R
C101.102.112.113	039-22024-220-0	CHIP C/C 22PF J 50V 0603
C110.121	039-33024-220-0	CHIP C/C 33PF J 50V 0603
C103.104.105.114.115.116	039-33435-220-0	CHIP. C/C 0.33MF 10V K 0603
C129.131.132.133.140.142.143. 144	039-39315-220-0	CHIP C/C 0.039MF K 25V 0603
C125.136	039-68225-220-0	CHIP RES. 0.0068UF K 50V 0603 X7R

## Ch1 / Ch2 CONTROL PCB-PART LIST

Ref.	Phonic Part No.	Specifications
IC1-6	160-00021-300-0 290-34640-304-0	IC NJM2068 SMD JRC PIII2000/2000B/3000/3000 B D+E+F PCB
R312A.312B.313A.313B.314A.314B	006-10012-420-0	MF RES. 1K F 0.25W M
R153	006-10073-420-0	MF RES. 10F 0.5W M
C145	030-10484-000-0	E/C 0.1MF J 100V 5
C109.120.123.134	030-22628-0A0-0	E/C 22MF Z 16V 5*11 T
C109.120	030-22628-000-0	E/C 22MF Z 16V 5*11 P
C111.122	030-47628-0A0-0	E/C 47MF Z 16V 5*11 T
Q303A.303B.304A.304B.305A.305B	120-00000-800-0	TRAN. 2SC1815 GR TOSHIBA



## MISCELLANEOUS ITEMS

Ref.	Phonic Part No.	Specifications
POWER SW	210-03201-080-0	SSA/SW PL2-2-21-C-2-BK/BK-P2
BRFAKER	210-14002-000-0	(BREAKER) 7420-2141241(12A)
	211-17000-410-0	BINDING POST BP-47-2P
	212-10010-650-0	1P WAFER/P 100MM UL1015#14 RED
	212-10010-660-0	1P WAFER/P 150MM UL1015#14 ORANGE
	212-10010-670-0	1P WAFER/P 150MM UL1015#14 YLW
POWER SW	212-10023-360-6	2P WAFER/P 1617#14 AWG 420MM BLUE
POWER SW	212-10023-370-6	2P WAFER/P 1617#14 AWG 370MM RED
	307-00000-070-0	CORD CONNECTOR C5
	315-00000-000-0	LUG D4 FOR GROUND
	321-00000-020-0	CABEL TIE 140MM
	321-00000-070-0	CABLE TIE HW-100MM
	347-00000-200-0	FAN SP802524H 24VDC
	510-20930-203-0	PANEL T=1.5 SECC XP2000B
	510-20930-503-0	PANEL T=1.5 SECC XP2000
	511-20620-103-0	BACK PANEL SECC T=1.2mm XP2000/3000(B)
	516-20430-102-0	TOP COV
	524-20007-012-0	HANDLE XP2000/3000(B)
	525-00009-100-0	FEET D26.5*11 BLK
	528-00000-000-0	FAN NET WHT PWA2200 8"
	529-20026-001-0	LENS PMMA 45.6*11.6
	540-20380-120-0	R/KNOB D9.5*10.0MM BLK
	540-20390-120-0	R/KNOB D18*18MM BLK <b>(XP2000B)</b>

## MISCELLANEOUS ITEMS

Ref.	Phonic Part No.	Specifications
	552-10174-480-0	LOCKING CABLE FIXEDWC-11
	552-20048-420-0	ADHESIVE FIXED FW-5D-3M
	552-60018-100-0	X'MER FIXED XP2000/3000(B)
	560-20990-300-0	CARTON SIZE:607*535*256 XP2000
	560-20990-301-0	CARTON XP2000B 607*535*256
	561-21230-500-0	G/B XP2000 SIZE:590*518*236
	561-21230-501-0	G/B XP2000B 590*518*236
	565-20052-020-0	LF POLYLON PIII2000/3000
	565-20054-020-0	RT POLYLON PIII2000/3000
	566-10015-010-0	SPONGE 40*10*5
	568-00003-000-0	#10 240*340*0.05
	568-20018-000-0	PE BAG 630*630*0.07
	572-00000-050-0	DRYER 5g
	573-10124-010-0	GND LABEL MAR2
	573-20340-001-0	LABEL D25 BLK
	573-20390-034-0	PVC PANEL XP2000/3000
	573-20391-035-0	PVC PANEL XP2000B/3000B
	573-20391-030-0	LABEL PIII3000 SIZE:233.69*15.6
	573-60240-000-0	BAR CODE LABEL PHONIC
	573-60343-000-0	LABEL BLUE D=8mm
	573-60353-001-0	POWER OUT LABEL XP2000
	573-60354-001-0	POWER OUT LABEL XP2000B
	574-34640-111-0	OWN. MANU.
	579-00000-068-0	MINI CATALOG PHONIC

**MISCELLANOUS ITEMS**

<b>Ref.</b>	<b>Phonic Part No.</b>	<b>Specifications</b>
FIX TOP COV&PANEL*4	590-03006-200-0	M/E FLT SCR. M3.0*6 BLK
FIX BOT COV X'MER FIXED	590-03010-200-0	M/E FLT SCR. M3.0*10BLK
FIXED NEURIK*4	590-03012-200-0	M/E FLT SCR. M3.0*12 BLK D=5.6mm
FIX PANEL & HANDLE	590-04008-100-0	M/E FLT SCR. M4.0*8 NI
FIX VR PCB&PANEL*4 FIX PWR PCB&BOT COVER	590-33008-200-0	M/E RUD SCR. M3.0*8 BLK
FIX PANEL&HEADLE*6	590-44008-200-0	M/E PAN SCR. M4.0*8 BLK
GND SCREW FIX BOT COV HEAT SINK*12	590-44010-200-0	M/E PAN SCR. M4*10 BLK
FIX FAN&HEATSINK*4	590-44040-200-0	M/E PAN SCR.M4.0*40BLK
BACK PANEL&PANEL	590-53006-200-0	M/E SET SCR. M3.0*6 BLK
FIX FAN BRACKET	590-53012-200-0	M/E SET SCR. M3.0*12 BLK
	590-54006-200-0	M/E SET SCR. M4*6 BLK
XLR/JACK	591-03008-200-0	T/P FLT SCR. D3.0*8 BLK
	591-54010-200-0	T/P SET SCR. D4.0*10 BLK
FIX FAN BRACKET FIX XLR*4	600-00302-210-0	HEX. NUT M3.0*2.2 NI
	600-00302-220-0	NEX NUT M3.0*2.2
GND	600-00403-510-0	HEX. NUT M4.0*3.5 NI
GND	600-00602-010-0	HEX. NUT M6.0*2.0 NI
	610-00300-516-0	FIBER WAS. D3*D8*0.5 RED
HEAT SINK	610-00402-018-0	FIBER WAS D4.0*D9.0*2.0 RED
FAN NET	610-00408-001-0	PLA. WAS. D4.0*8.0*1.0 NI
PHONE XLR/JACK	610-20901-001-0	TOOTH WAS D9*12*1 NI
POWER PCB	610-30300-501-0	TOOTH WAS. D3.0*D6.5*0.5 NI
GND	610-30400-501-0	TOOTH WAS. D4.0*D8.5*0.5 NI
FAN BRACKET	610-60300-700-0	PAN SPR WAS. D3.0*6.0*0.7ZN
BOT COV&HEAT SINK	610-60401-001-0	PAN SPR. WAS. D4*7.6*1.0 NI
GND	615-10001-130-0	EARTH BOSS 2+5 NI
GND	615-10002-130-0	EARTH BOSS 10+5 NI

MISCELLANEOUS ITEMS

Ref.	Phonic Part No.	Specifications
FAN&HEAT SINK	615-20035-600-0	BOSS D8*D6*7MM
FIXED POWER PCB*5	615-20106-100-0	PCB BOSS M3*24MM
FIXED ROT/VR PCB	615-20107-100-0	PCB BOSS M3*14MM
FIXED LED PCB	615-20108-100-0	PCB BOSS M3*13MM
SELECT VOLTAGE	618-14180-662-0	SPEC FIXED PIN
		SR-2 WHT
	619-06380-320-0	PLA RIVET SR-3L BLK
	S34-63000-000-0	XP2000/3000(B)
		MATERIAL
	510-20930-103-F	PANEL XP2000/3000(B)
	511-20620-102-F	BACK PANEL
		XP2000/3000(B)
	516-20430-102-F	TOP COV XP2000/3000(B)
		600/1000

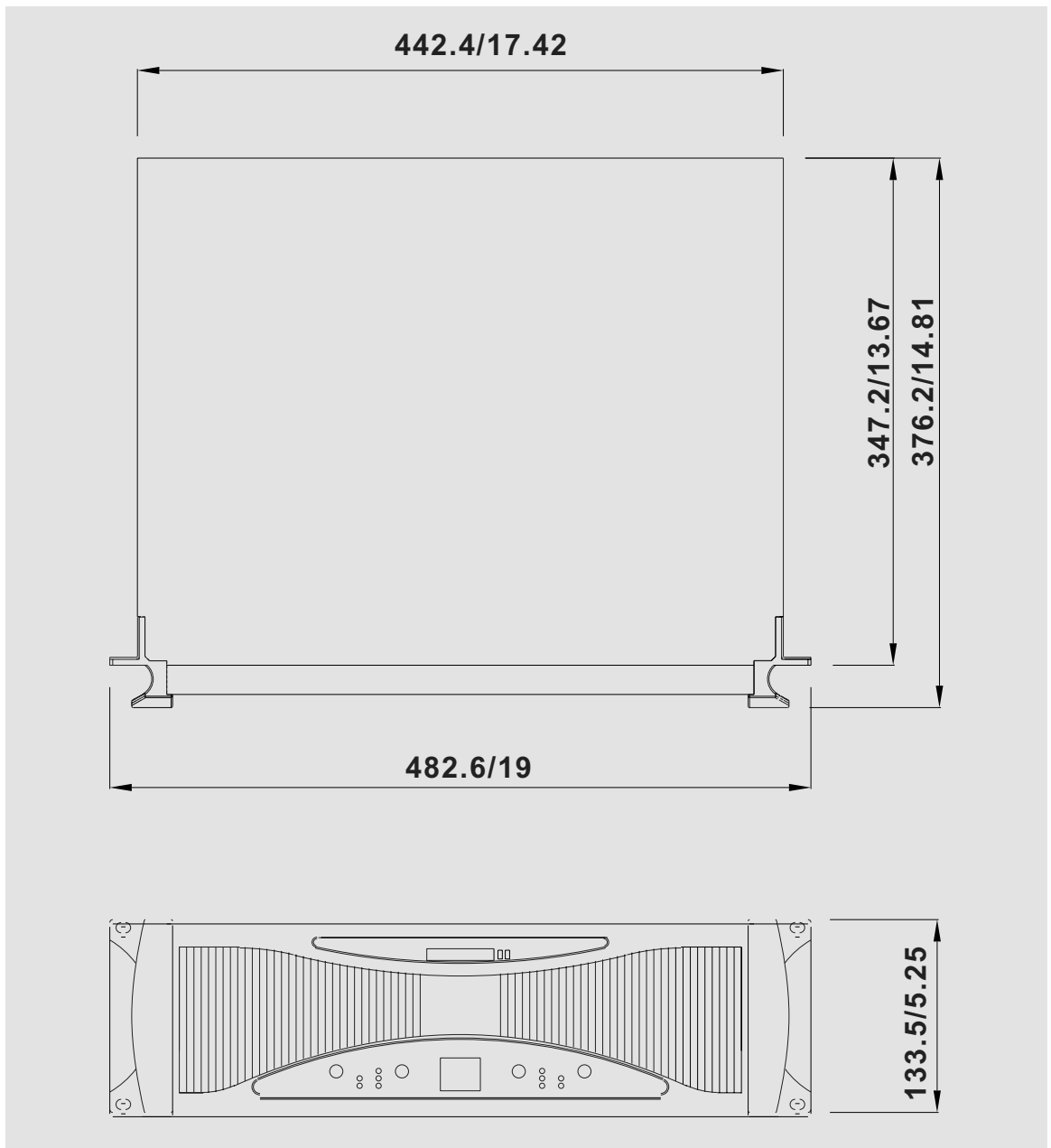
**POWER REQUIREMENT CLASSIFICATION**

<b>Ref.</b>	<b>Phonic Part No.</b>	<b>Specifications</b>
<b><u>100VAC JIS</u></b>		
	070-20510-600-0	XIMER 100V JIS XP2000/2000B
	280-2026B-000-0	FUSE 2A 250V UL/CSA/JIS S
	370-08810-702-0	P/CORD 120V20A 2.5M 2.0MM/3PUL/CSA
	527-14000-000-0	STR.REL BUSHING 6W3-4 S
<b><u>120VAC UL</u></b>		
	070-20518-800-0	XIMER XP2000
	280-2026B-000-0	FUSE 2A 250V UL/CSA/JIS S
	370-08810-702-0	P/CORD 120V20A 2.5M 2.0MM/3PUL/CSA
	527-14000-000-0	STR.REL BUSHING 6W3-4 S
<b><u>230VAC IEC</u></b>		
	070-20518-800-0	XIMER XP2000/2000B
	280-20263-000-0	FUSE T2A 250V VDE S
	370-23610-902-0	P/CORD 230V 15A 2.5M3P
	527-11000-000-0	STR.REL BUSHING 6W3-4 R(6N3-4)
<b><u>240VAC BS</u></b>		
	070-20518-800-0	XIMER XP2000/2000B
	280-20263-000-0	FUSE T2A 250V/15A 2.5M 3P BS
	370-26640-432-6	P/CORD 250V/15A 2.5M 3P BS
	527-11000-000-0	STR.REL BUSHING 6W3-4 R(6N3-4)

MISCELLANEOUS ITEMS

<b>Ref.</b>	<b>Phonic Part No.</b>	<b>Specifications</b>
	573-10032-010-0	POWER LABEL (ONLY USED IN BS)
 <b><u>240VAC SA</u></b>		
	070-20518-800-0	X/MER XP2000/2000B
	280-20263-000-0	FUSE T2A 250V VDE S
	370-15020-829-0	P/CORD 15A/250V 1.0MM*3 6F 3P(XP2000)
	527-11000-000-0	STR.REL BUSHING 6W3-4 R(6N3-4)
 <b><u>240VAC SAA</u></b>		
	070-20518-800-0	X/MER XP2000/2000B
	280-20263-000-0	FUSE T2A 250V VDE S
	370-12640-631-6	P/CORD 15A/250V 3P 2.5M(1.0) SAA
	527-11000-000-0	STR.REL BUSHING 6W3-4 R(6N3-4)

DIMENSIONS



**PHONIC**  
WWW.PHONIC.COM