

Stepping Motors

M42SP-6NK

OUTLINE

"M42SP-6NK" has acquired the highest response among the outer diameter 42mm model series-holding torque : 41.2mN·m, pull-out torque : 21.6mN·m/800pps, and pull-in torque : 25.5mN·m/200pps (12V DC). With superior running noiselessness and other features, this model motor is the most suited to future, compact electronic equipment.



FEATURES

1. High response.
2. High output torque.
3. Superior running quietness and stability.
4. Step angle : 7.5°.

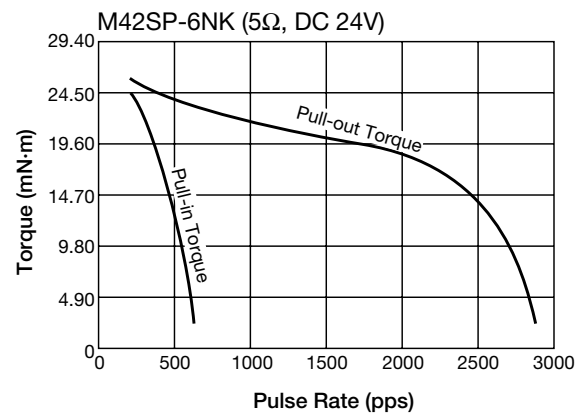
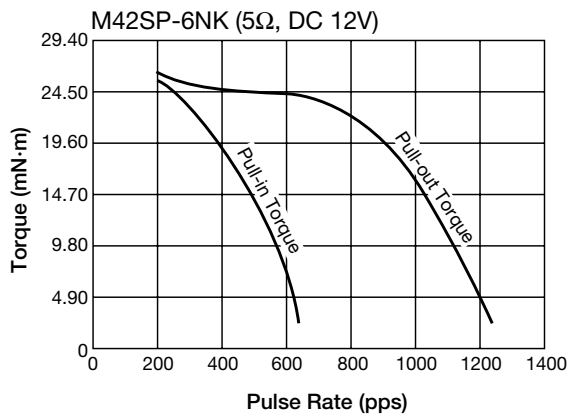
USES

Printers, typewriters, word processors, facsimiles, copy machines and such.

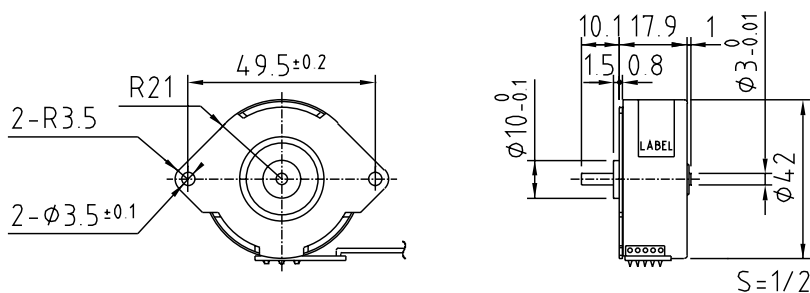
SPECIFICATIONS

Items	M42SP-6NK	
Rated Voltage	DC 12V	DC 24V
Working Voltage	DC 10.8~13.2V	DC 21.6~26.4V
Rated Current/Phase	400mA (PEAK)	400mA (PEAK)
No. of Phase	2 Phase	2 Phase
Coil DC Resistance	5Ω/phase±7%	5Ω/phase±7%
Step Angle	7.5°/step	7.5°/step
Excitation Method	2-2 Phase excitation (Bipolar chopping driving)	
Insulation Class	Class E insulation	Class E insulation
Holding Torque	41.2mN·m	41.2mN·m
Pull-out Torque	21.6mN·m/800pps	17.6mN·m/2000pps
Pull-in Torque	25.5mN·m/200pps	22.5mN·m/200pps
Max. Pull-out Pulse Rate	1200pps	2900pps
Max. Pull-in Pulse Rate	640pps	640pps

CHARACTERISTICS



DIMENSIONS



Unit : mm, General tolerance : ±0.5