

A COMPANY – SPECIALIZED FOR WIRE FEED SYSTEMS

OUR COMPANY WAS ESTABLISHED IN 1982, AND HAS PROVED TO BE A PROSPERING MIDDLE - SIZED ENTERPRISE BY NOW, LOCATED IN ÉRD CLOSE TO BUDAPEST, THE CAPITAL OF HUNGARY.

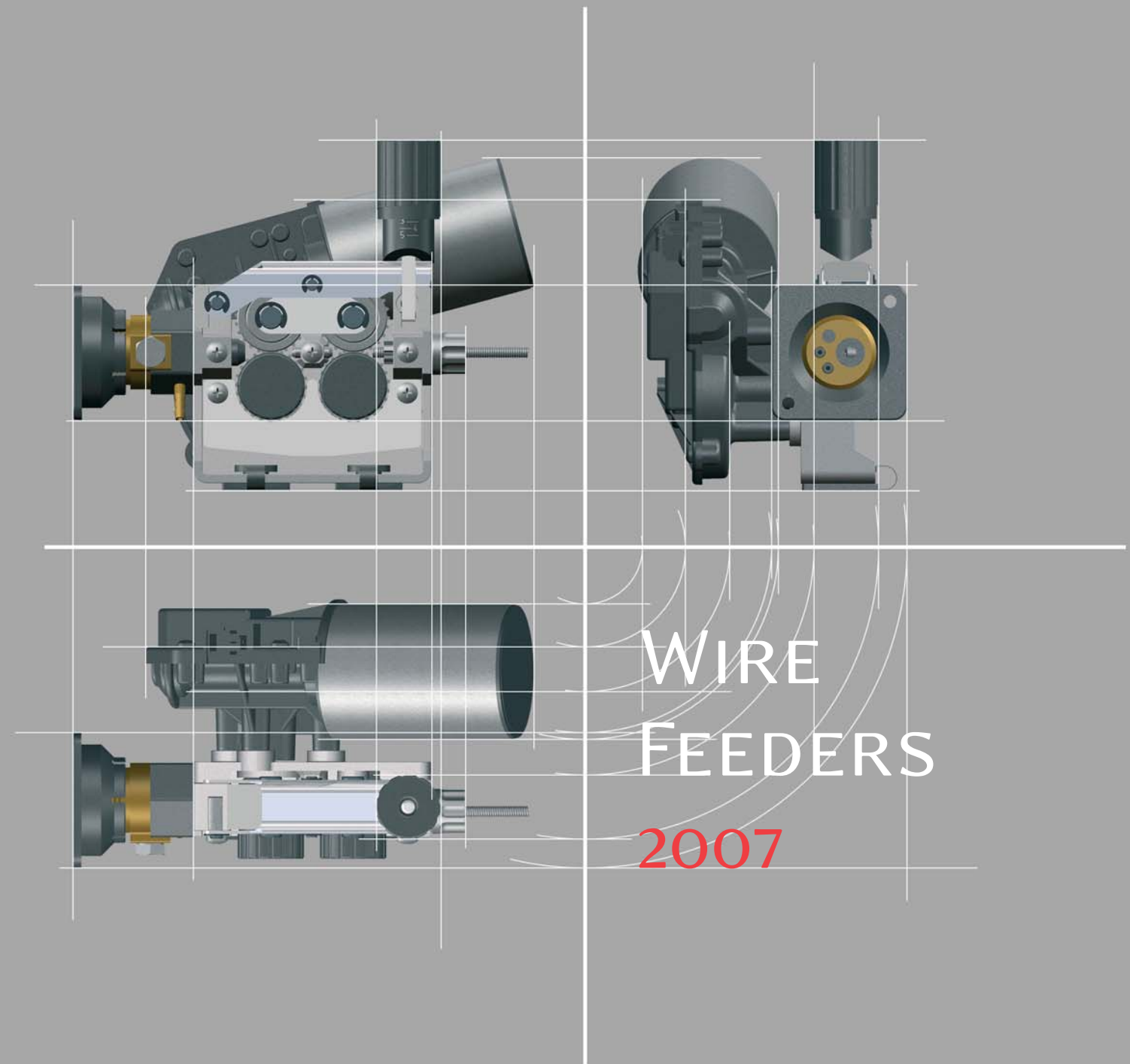
WE ARE SPECIALIZED IN THE PRODUCTION OF WIRE FEED SYSTEMS USED IN WELDING EQUIPMENT RANGING FROM SMALL MACHINES TO LARGE INDUSTRIAL UNITS. WE ARE CONTINUOUSLY DEVELOPING NEW PRODUCTS IN ORDER TO ADDRESS NEW REQUIREMENTS OF THE MARKET.

MANY LEADING COMPANIES FROM WELDING INDUSTRY HAVE RECOGNIZED OUR EXPERTISE AND HAVE AUTHORIZED US FOR EXCLUSIVE DISTRIBUTION OF THEIR PRODUCTS IN HUNGARY.

THIS CATALOGUE ILLUSTRATES THE COMPLETE LINE OF COOPTIM PRODUCTS DESIGNED FOR MEETING WITH THE SPECIAL REQUIREMENTS OF THE CUSTOMERS.

COOPTIM IS CERTIFICATED AND REGISTRATED BY SGS YARSLY INTERNATIONAL CERTIFICATION SERVICES LTD. IN ACCORDANCE WITH ISO 9001:2000 QUALITY SYSTEM.

WE WELCOME THE OPPORTUNITY TO DEMONSTRATE THE QUALITY OF OUR NEW PRODUCTION RANGE AND LOOK FORWARD TO RECEIVING YOUR INQUIRIES ABOUT OUR PRODUCTS.



Cooptim[®]

COOPTIM IPARI KFT.
BUDAFOKI ÚT 10.
H-2030 ÉRD, HUNGARY
PHONE: +36 (23) 521 400
FAX: +36 (23) 521 409
E-MAIL: INFO@COOPTIM.COM
WWW.COOPTIM.COM

Cooptim[®]

the original

CONTENTS

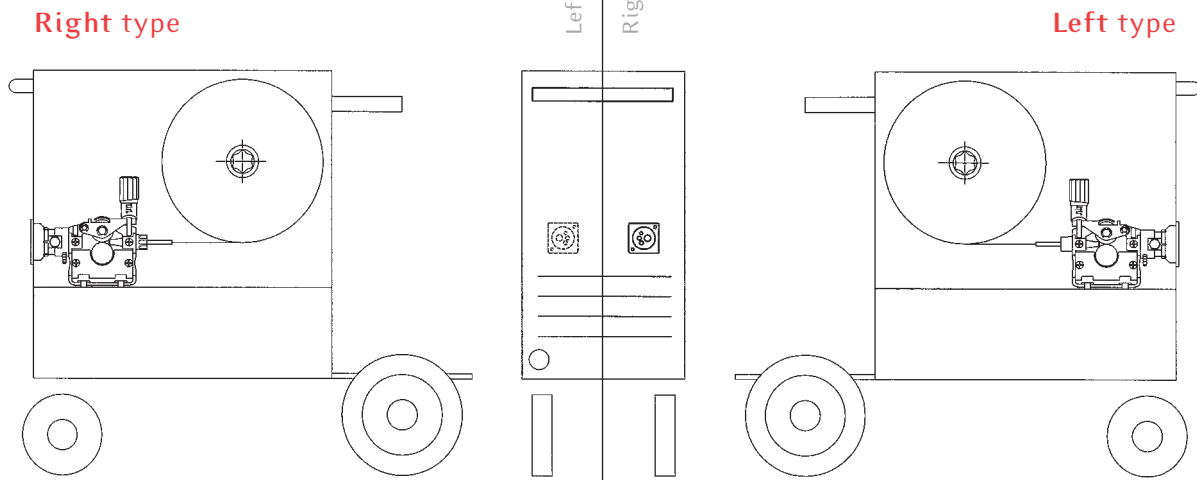
Page

PLASTIC WIRE FEED SYSTEMS	3 - 5 , 8 - 9
INTEGRATED WIRE FEED SYSTEMS	6 - 7
ALUMINIUM TWO ROLL WIRE FEED SYSTEMS	10 - 13, 28 - 29
ALUMINIUM FOUR ROLL WIRE FEED SYSTEMS	14 - 27, 30 - 31
WIRE FEED MOTORS	32
WIRE FEED ROLLS	33
WIRE STRAIGHTENERS	34
REEL HUB ASSEMBLIES	35 - 37
HANDLES	38
COLLET KNOBS	39
GAS PREHEATERS	39
EURO CENTRAL ADAPTORS	40 - 41

WARRANTY

COOPTIM PRODUCTION IS MADE ACCORDING TO THE WORLD'S HIGHEST QUALITY-CONTROL STANDARD ISO 9001:2000 THE PRODUCTS ARE COVERED BY ONE YEAR WARRANTY, EXCEPT DAMAGES IN CONNECTION WITH DELIVERY, OR NOT CORRECT INSTALLATION OF THE PRODUCTS. WARRANTY FOR D.C. MOTORS IS COVERED BY THE MOTOR FACTORIES.



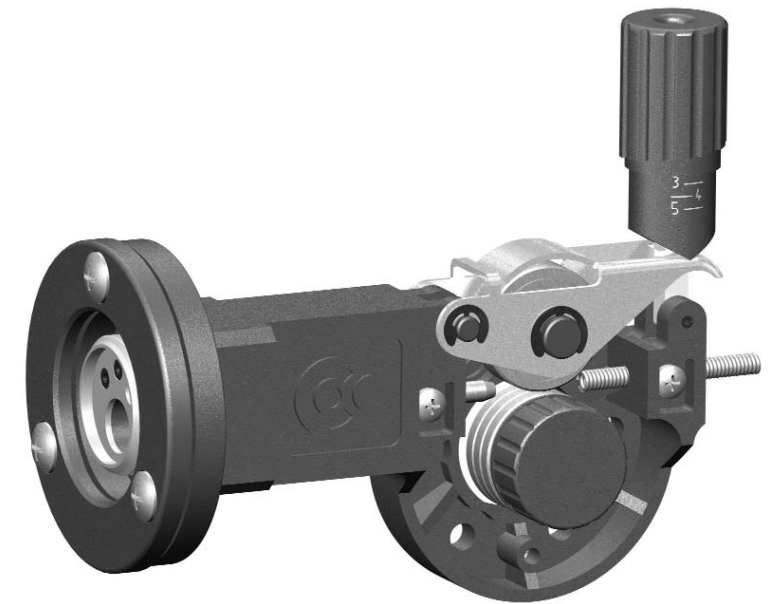


WIRE FEED ASSEMBLING

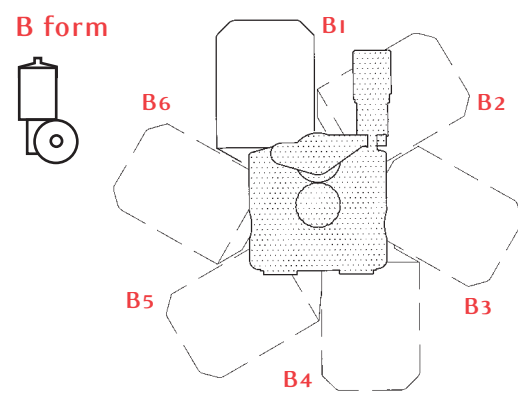
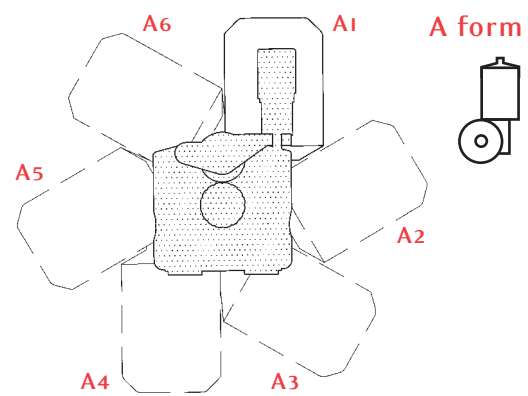
CWF 04

TWO ROLL COMPACT WIRE FEED SYSTEM WITH BUILT IN CENTRAL ADAPTOR

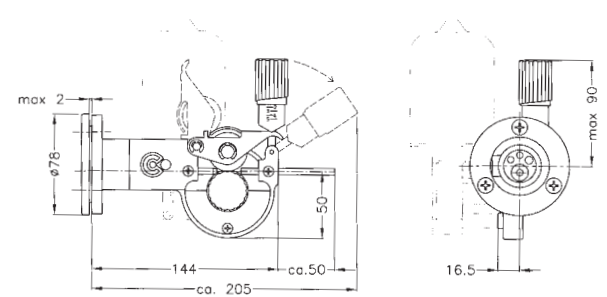
Feeds wire from 0,6 to 1,6 mm (.023"-1/16")



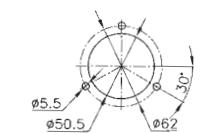
MOTOR POSITIONS



Overall fitting dimensions



Fixing holes



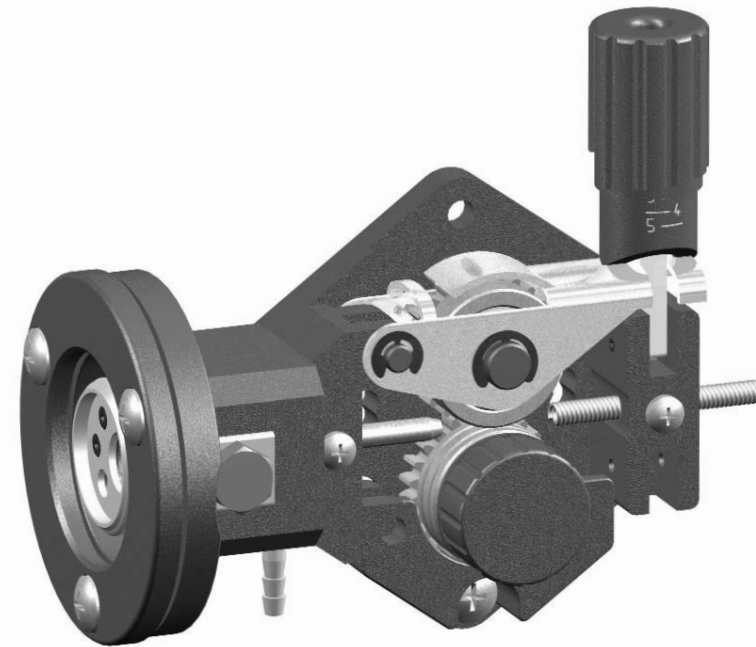
Wire Feed Mechanism of plastic feed plate with built in central adaptor

- **CWF 040** with feed roll dia 30 mm, pressure arm **with bearing**
- Feed roll dia 30x12/dia 10 mm V or U groove 0,6-0,8 mm
0,8-1,0 mm
1,0-1,2 mm
U groove 1,4-1,6 mm
- Knurled feed rolls: option
- Pressure arm with bearing
- Pressure arm with lift opening
- Adjusting arm with side opening
- Plastic frame of glass fibre
- Wire feed motor 25-40 W can be assembled in A1-A4, B1-B4 positions
- Torch connection on the left side

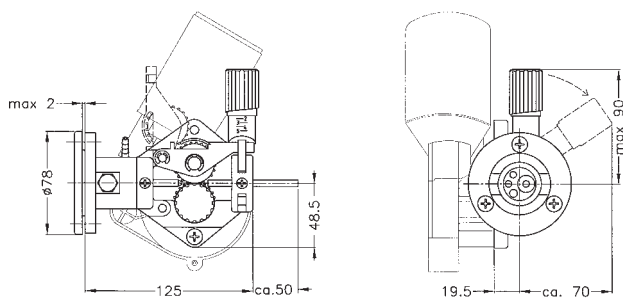
CWF 05

TWO ROLL COMPACT WIRE FEED SYSTEM WITH BUILT IN CENTRAL ADAPTOR

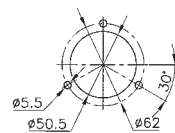
Feeds wire from 0,6 to 1,6 mm (.023"-1/16")



Overall fitting dimensions



Fixing holes



Wire Feed Mechanism of plastic feed plate with built in central adaptor

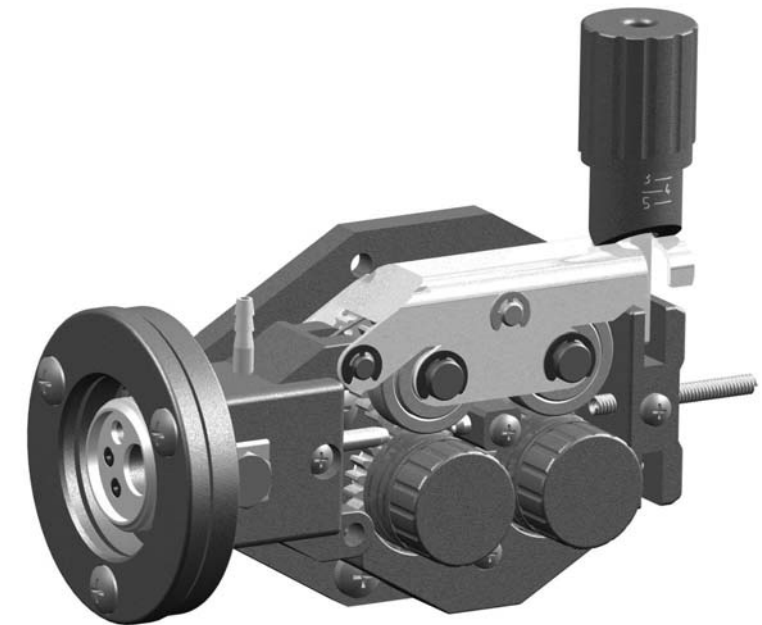
- CWF 050 with feed roll dia 30 mm, pressure arm **with bearing**
 - Feed roll dia 30x12/dia 10 mm V or U groove 0,6-0,8 mm
 - 0,8-1,0 mm
 - 1,0-1,2 mm
 - U groove 1,4-1,6 mm
- CWF 051 with feed roll dia 30 mm, pressure arm **with gear wheel**
 - Feed roll dia 30x10/dia 22 mm V or U groove 0,6-0,8 mm
 - 0,8-1,0 mm
 - 1,0-1,2 mm
 - U groove 1,4-1,6 mm

- Knurled feed rolls: option
- Pressure arm with lift opening
- Adjusting arm with forward opening
- Safety guard of plastic
- Plastic frame of glass fibre
- Wire feed motor 25-40 W can be assembled in A1, A3, B1, B3 positions
- Torch connection on the right or left side
- Current connection optional front side or behind
- Gas connection optional axial or radial

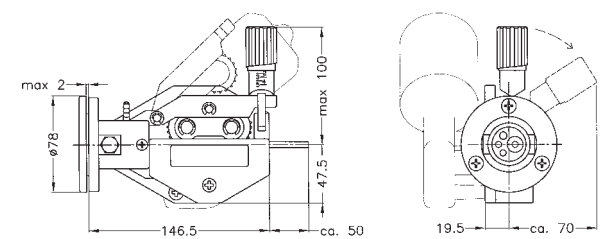
CWF 06

FOUR ROLL COMPACT WIRE FEED SYSTEM WITH BUILT IN CENTRAL ADAPTOR

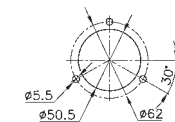
Feeds wire from 0,6 to 2,4 mm (.023"-1/32")



Overall fitting dimensions



Fixing holes



Wire Feed Mechanism of plastic feed plate with built in central adaptor

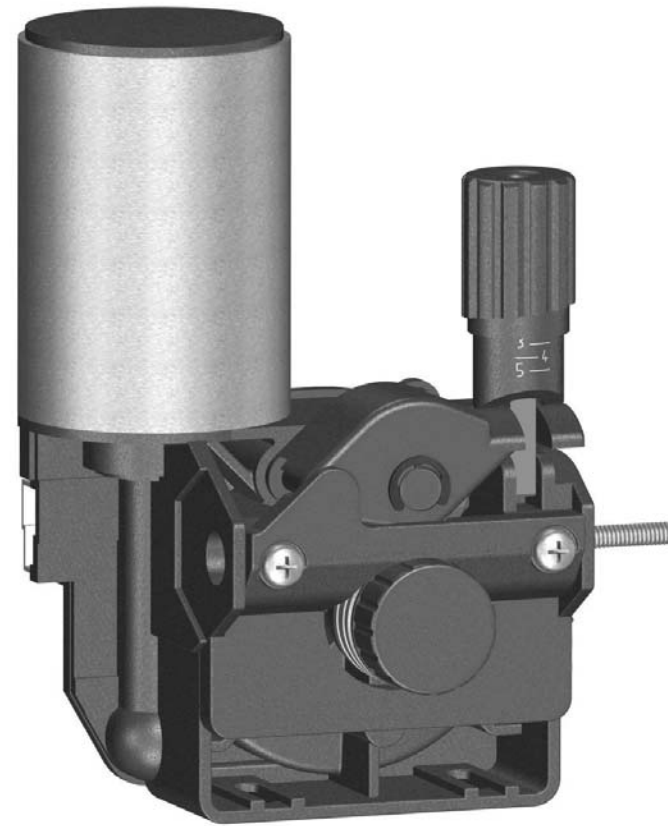
- CWF 060 with feed roll dia 30 mm, pressure arm **with bearing**
- CWF 061 with feed roll dia 30 mm, pressure arm **with gear wheel**
 - Feed roll dia 30x10/dia 22 mm V or U groove 0,6-0,8 mm
 - 0,8-1,0 mm
 - 1,0-1,2 mm
 - 1,4-1,6 mm
 - U groove 2,0-2,4 mm

- Knurled feed rolls: option
- Pressure arm with lift opening
- Adjusting arm with forward opening
- Safety guard of plastic
- Plastic frame of glass fibre
- Wire feed motor 25-40 W can be assembled in A1, A3, B2, B4 positions
- Torch connection on the right or left side
- Current connection optional front side or behind
- Gas connection optional axial or radial

IWF 100

TWO ROLL WIRE FEED SYSTEM WITH BUILT IN ANKARSRUM MOTOR

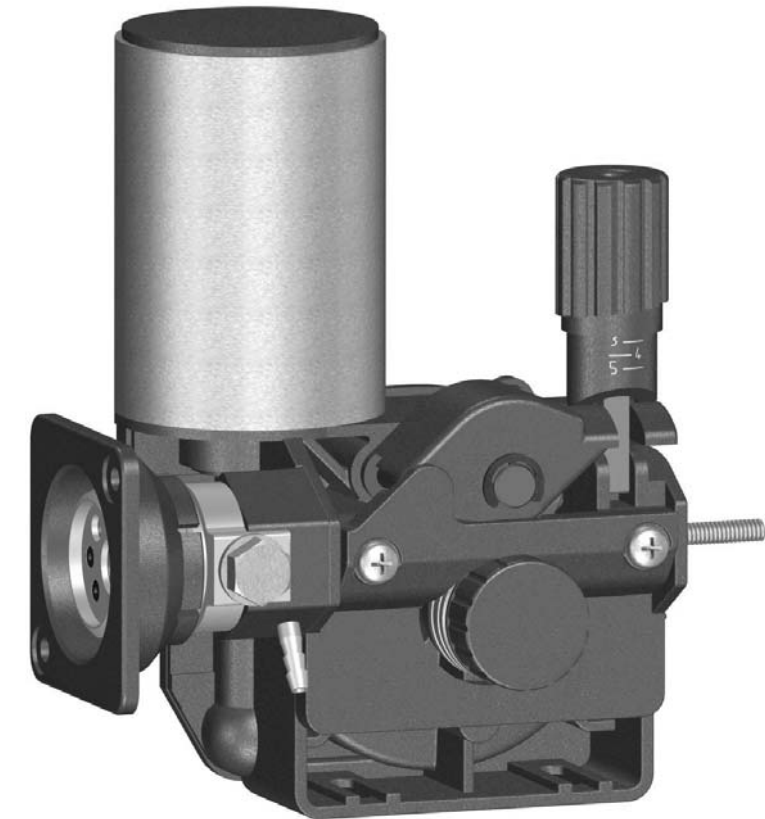
Feeds wire from 0,6 to 1,6 mm (.023"-1/16")



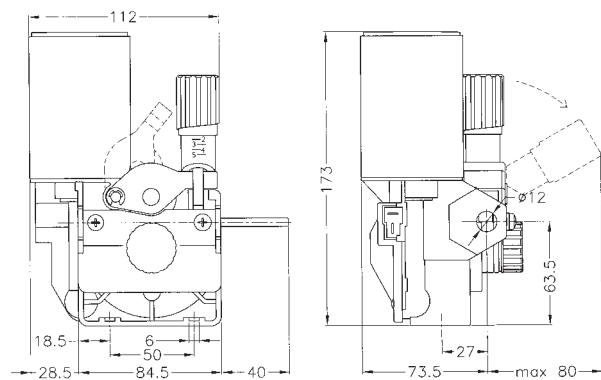
IWF 100

TWO ROLL WIRE FEED SYSTEM WITH BUILT IN ANKARSRUM MOTOR + CENTRAL ADAPTOR

Feeds wire from 0,6 to 1,6 mm (.023"-1/16")



Overall fitting dimensions



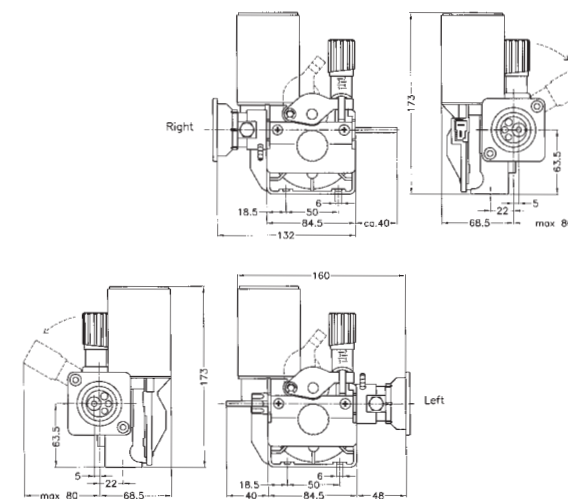
Wire Feed Mechanism of plastic feed plate with built in motor

- **IWF 100** with feed roll dia 30 mm, pressure arm **with bearing**
- Feed roll dia 30x12/dia 10 mm V or U groove 0,6-0,8 mm
0,8-1,0 mm
1,0-1,2 mm
U groove 1,4-1,6 mm
- **IWF 110** with feed roll dia 30 mm, pressure arm **with gear wheel**
- Feed roll dia 30x10/dia 22 mm V or U groove 0,6-0,8 mm
0,8-1,0 mm
1,0-1,2 mm
U groove 1,4-1,6 mm
- Knurled feed rolls: option
- Pressure arm with lift opening
- Adjusting arm with forward opening
- Safety guard of plastic
- Plastic frame of glass fibre
- Basic type of right assembling
- Torch connection on the left and right side
- Different gear wheel or feed roll on request
- Powered by Ankarsrum motor (42 V motor option)
- Can be direct connected with Binzel torches MB 14 and RV 13 types

Motor technical data

- Voltage: 24 V
- Input power: 35 W (typical)
- Speed: 200 rpm at 1,0 Nm
- Starting torque: 12 Nm

Overall fitting dimensions



Wire Feed Mechanism of plastic feed plate with built in motor + Central Adaptor

- **IWF 100 + CCA I** with feed roll dia 30 mm, pressure arm **with bearing**
- Feed roll dia 30x12/dia 10 mm V or U groove 0,6-0,8 mm
0,8-1,0 mm
1,0-1,2 mm
U groove 1,4-1,6 mm
- **IWF 110 + CCA I** with feed roll dia 30 mm, pressure arm **with gear wheel**
- Feed roll dia 30x10/dia 22 mm V or U groove 0,6-0,8 mm
0,8-1,0 mm
1,0-1,2 mm
U groove 1,4-1,6 mm
- Knurled feed rolls: option
- Pressure arm with lift opening
- Adjusting arm with forward opening
- Safety guard of plastic
- Plastic frame of glass fibre
- Basic type of right assembling
- Torch connection on the left and right side
- Different gear wheel or feed roll on request
- Powered by Ankarsrum motor (42 V motor option)

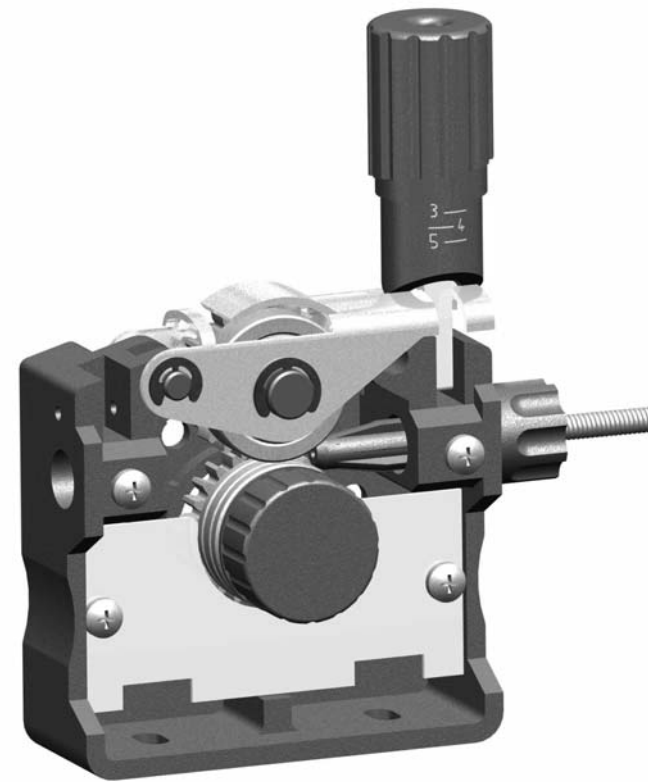
Motor technical data

- Voltage: 24 V
- Input power: 35 W (typical)
- Speed: 200 rpm at 1,0 Nm
- Starting torque: 12 Nm

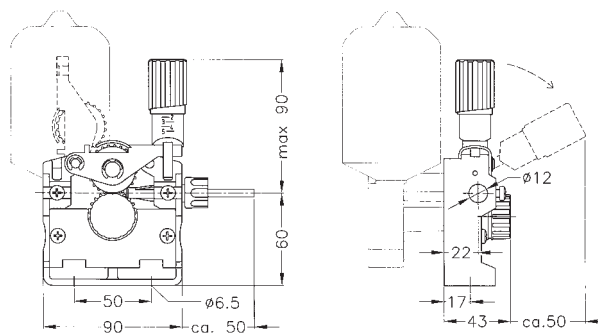
CFW 10

TWO ROLL WIRE FEED SYSTEM

Feeds wire from 0,6 to 1,6 mm (.023"-1/16")



Overall fitting dimensions



Wire Feed Mechanism of plastic feed plate

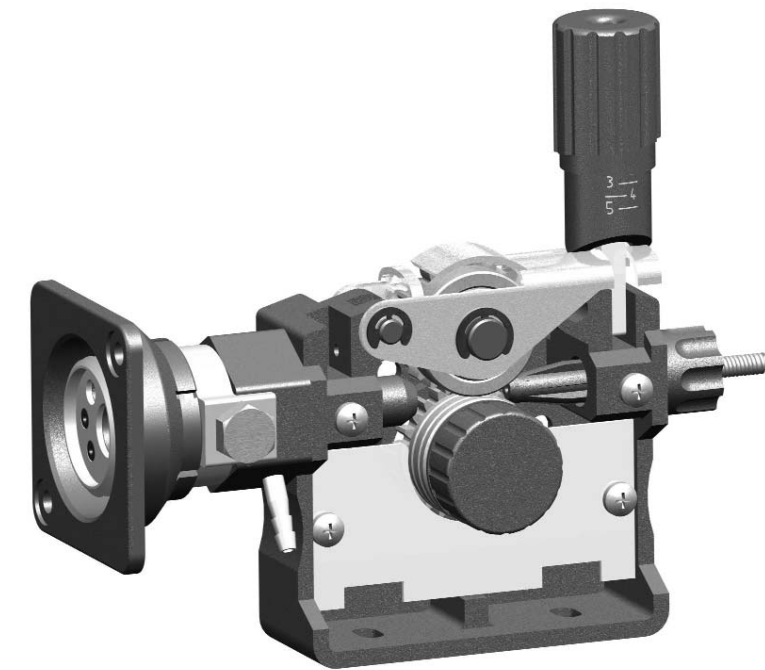
- CWF 10-3 with feed roll dia 30 mm, pressure arm **with bearing**
- CWF 11-3 with feed roll dia 30 mm, pressure arm **with gear wheel**
- Feed roll dia 30x10/dia 22 mm V or U groove 0,6-0,8 mm
0,8-1,0 mm
1,0-1,2 mm
U groove 1,4-1,6 mm
- CWF 10-4 with feed roll dia 40 mm, pressure arm **with bearing**
- CWF 11-4 with feed roll dia 40 mm, pressure arm **with gear wheel**
- Feed roll dia 40x10/dia 22 mm V or U groove 0,6-0,8 mm
0,8-1,0 mm
1,0-1,2 mm
U groove 1,4-1,6 mm
- Knurled feed rolls: option
- Pressure arm with lift opening
- Adjusting arm with forward opening
- Safety guard of metal plate (option: plastic)
- Plastic frame of glass fibre
- Wire feed motor 25-40 W can be assembled in A1-A6, B1-B6 positions
- Torch connection on the right or left side

CFW 10

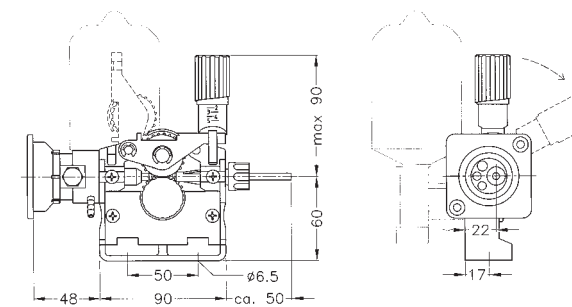
TWO ROLL WIRE FEED SYSTEM

+ CENTRAL ADAPTOR

Feeds wire from 0,6 to 1,6 mm (.023"-1/16")



Overall fitting dimensions



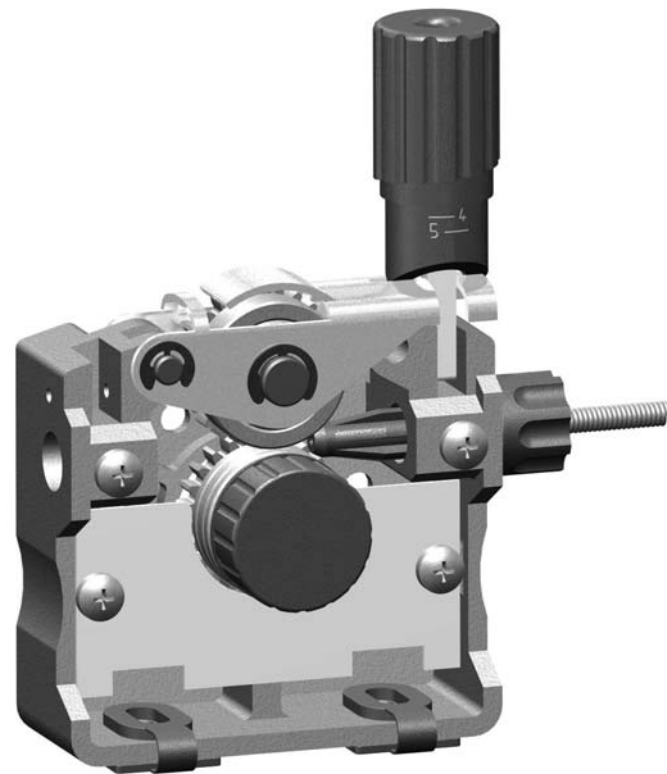
Wire Feed Mechanism of plastic feed plate + Central adaptor

- CWF 10-3 + CCA 1 with feed roll dia 30 mm, pressure arm **with bearing**
- CWF 11-3 + CCA 1 with feed roll dia 30 mm, pressure arm **with gear wheel**
- Feed roll dia 30x10/dia 22 mm V or U groove 0,6-0,8 mm
0,8-1,0 mm
1,0-1,2 mm
U groove 1,4-1,6 mm
- CWF 10-4 + CCA 1 with feed roll dia 40 mm, pressure arm **with bearing**
- CWF 11-4 + CCA 1 with feed roll dia 40 mm, pressure arm **with gear wheel**
- Feed roll dia 40x10/dia 22 mm V or U groove 0,6-0,8 mm
0,8-1,0 mm
1,0-1,2 mm
U groove 1,4-1,6 mm
- Knurled feed rolls: option
- Pressure arm with lift opening
- Adjusting arm with forward opening
- Safety guard of metal plate (option: plastic)
- Plastic frame of glass fibre
- Wire feed motor 25-40 W can be assembled in A1-A6, B1-B6 positions
- Torch connection on the right or left side

CFW 30

TWO ROLL WIRE FEED SYSTEM

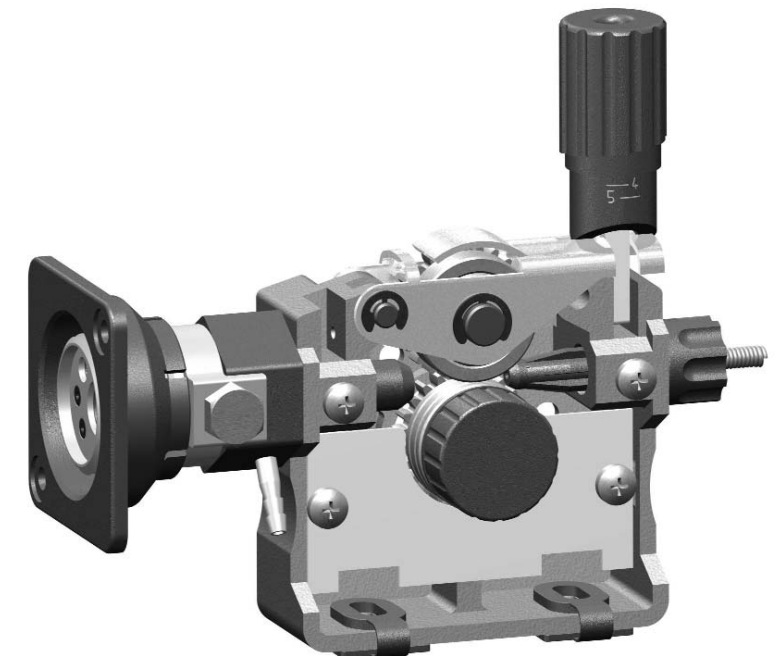
Feeds wire from 0,6 to 1,6 mm (.023"-1/16")



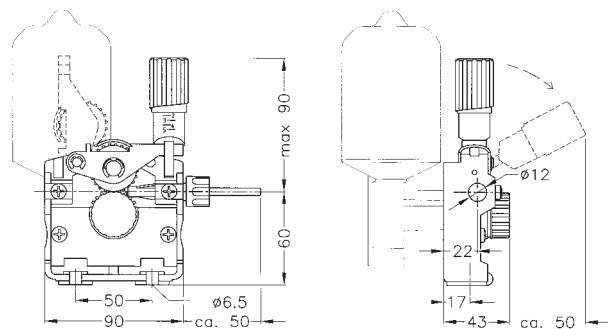
CFW 30

TWO ROLL WIRE FEED SYSTEM + CENTRAL ADAPTOR

Feeds wire from 0,6 to 1,6 mm (.023"-1/16")



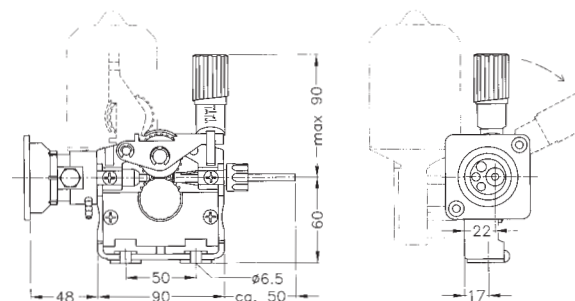
Overall fitting dimensions



Wire Feed Mechanism of aluminium feed plate

- CWF 30-3 with feed roll dia 30 mm, pressure arm **with bearing**
- CWF 31-3 with feed roll dia 30 mm, pressure arm **with gear wheel**
- Feed roll dia 30x10/dia 22 mm V or U groove 0,6-0,8 mm
 - 0,8-1,0 mm
 - 1,0-1,2 mm
 - 1,4-1,6 mm
- CWF 30-4 with feed roll dia 40 mm, pressure arm **with bearing**
- CWF 31-4 with feed roll dia 40 mm, pressure arm **with gear wheel**
- Feed roll dia 40x10/dia 22 mm V or U groove 0,6-0,8 mm
 - 0,8-1,0 mm
 - 1,0-1,2 mm
 - 1,4-1,6 mm
- Knurled feed rolls: option
- Pressure arm with lift opening
- Adjusting arm with forward opening
- Safety guard of metal plate (option: plastic)
- Wire feed motor 25-65 W can be assembled in A1-A6, B1-B6 positions
- Torch connection on the right or left side

Overall fitting dimensions



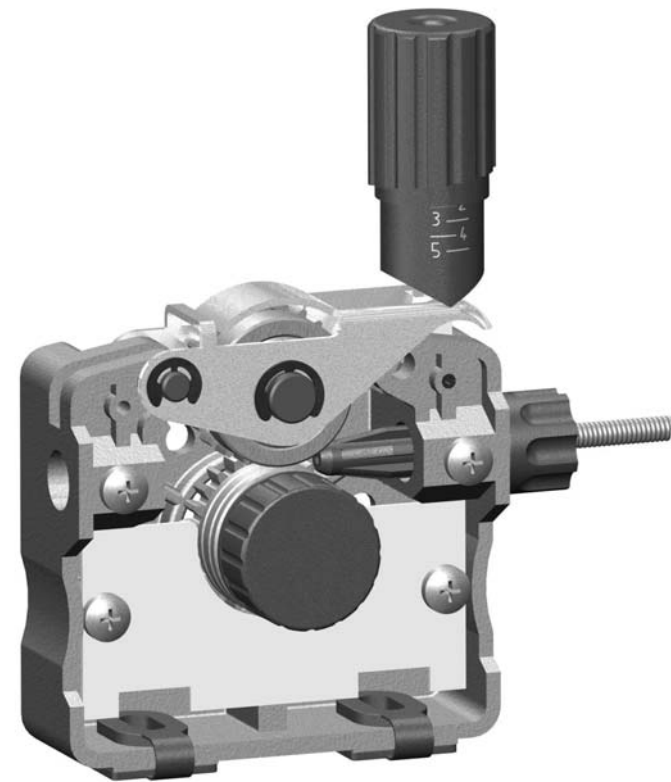
Wire Feed Mechanism of aluminium feed plate + Central adaptor

- CWF 30-3 + CCA I with feed roll dia 30 mm, pressure arm **with bearing**
- CWF 31-3 + CCA I with feed roll dia 30 mm, pressure arm **with gear wheel**
- Feed roll dia 30x10/dia 22 mm V or U groove 0,6-0,8 mm
 - 0,8-1,0 mm
 - 1,0-1,2 mm
 - 1,4-1,6 mm
- CWF 30-4 + CCA I with feed roll dia 40 mm, pressure arm **with bearing**
- CWF 31-4 + CCA I with feed roll dia 40 mm, pressure arm **with gear wheel**
- Feed roll dia 40x10/dia 22 mm V or U groove 0,6-0,8 mm
 - 0,8-1,0 mm
 - 1,0-1,2 mm
 - 1,4-1,6 mm
- Knurled feed rolls: option
- Pressure arm with lift opening
- Adjusting arm with forward opening
- Safety guard of metal plate (option: plastic)
- Wire feed motor 25-65 W can be assembled in A1-A6, B1-B6 positions
- Torch connection on the right or left side

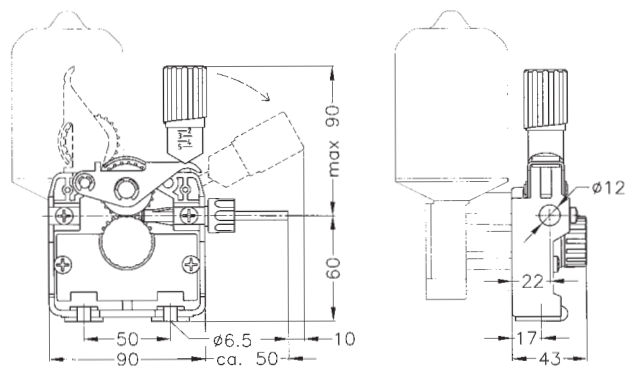
CFW 300

TWO ROLL WIRE FEED SYSTEM

Feeds wire from 0,6 to 1,6 mm (.023"-1/16")



Overall fitting dimensions



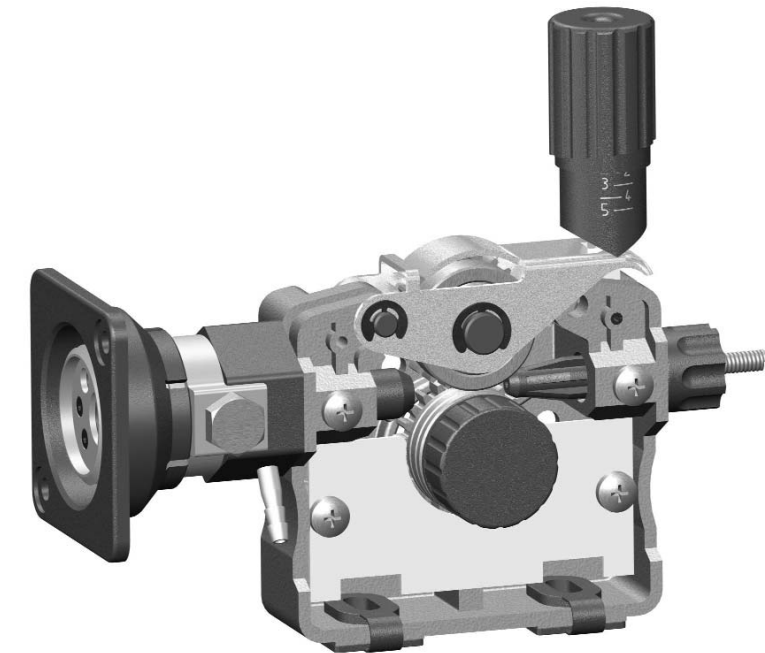
Wire Feed Mechanism of aluminium feed plate

- CWF 300-3 with feed roll dia 30 mm, pressure arm **with bearing**
 - CWF 310-3 with feed roll dia 30 mm, pressure arm **with gear wheel**
 - Feed roll dia 30x10/dia 22 mm V or U groove 0,6-0,8 mm
0,8-1,0 mm
1,0-1,2 mm
1,4-1,6 mm
 - CWF 300-4 with feed roll dia 40 mm, pressure arm **with bearing**
 - CWF 310-4 with feed roll dia 40 mm, pressure arm **with gear wheel**
 - Feed roll dia 40x10/dia 22 mm V or U groove 0,6-0,8 mm
0,8-1,0 mm
1,0-1,2 mm
1,4-1,6 mm
- Knurled feed rolls: option
 - Pressure arm with lift opening
 - Adjusting arm with side opening
 - Safety guard of metal plate (option: plastic)
 - Wire feed motor 25-65 W can be assembled in A1-A6, B1-B6 positions
 - Torch connection on the right or left side

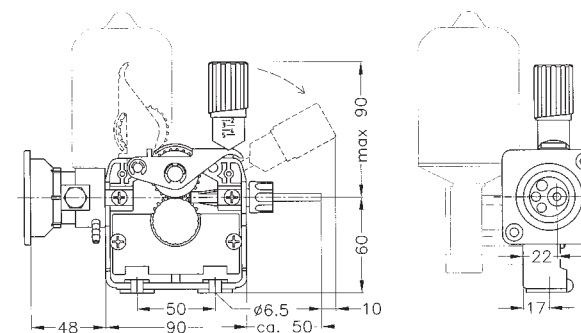
CFW 300

TWO ROLL WIRE FEED SYSTEM + CENTRAL ADAPTOR

Feeds wire from 0,6 to 1,6 mm (.023"-1/16")



Overall fitting dimensions



Wire Feed Mechanism of aluminium feed plate + Central adaptor

- CWF 300-3 + CCA I with feed roll dia 30 mm, pressure arm **with bearing**
 - CWF 310-3 + CCA I with feed roll dia 30 mm, pressure arm **with gear wheel**
 - Feed roll dia 30x10/dia 22 mm V or U groove 0,6-0,8 mm
0,8-1,0 mm
1,0-1,2 mm
1,4-1,6 mm
 - CWF 300-4 + CCA I with feed roll dia 40 mm, pressure arm **with bearing**
 - CWF 310-4 + CCA I with feed roll dia 40 mm, pressure arm **with gear wheel**
 - Feed roll dia 40x10/dia 22 mm V or U groove 0,6-0,8 mm
0,8-1,0 mm
1,0-1,2 mm
1,4-1,6 mm
- Knurled feed rolls: option
 - Pressure arm with lift opening
 - Adjusting arm with side opening
 - Safety guard of metal plate (option: plastic)
 - Wire feed motor 25-65 W can be assembled in A1-A6, B1-B6 positions
 - Torch connection on the right or left side

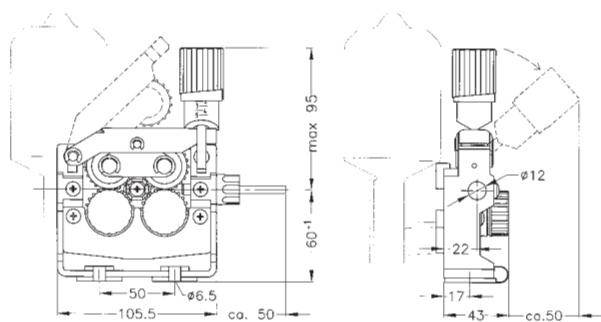
CFW 400

FOUR ROLL WIRE FEED SYSTEM

Feeds wire from 0,6 to 2,4 mm (.023"-3/32")



Overall fitting dimensions



Wire Feed Mechanism of aluminium feed plate

- CFW 400 with feed roll dia 30 mm, pressure arm **with bearing**
- CFW 410 with feed roll dia 30 mm, pressure arm **with gear wheel**
- Feed roll dia 30x10/dia 22 mm V or U groove 0,6-0,8 mm
 - 0,8-1,0 mm
 - 1,0-1,2 mm
 - 1,4-1,6 mm
 - U groove 2,0-2,4 mm
- Knurled feed rolls: option
- Pressure arm with lift opening
- Adjusting arm with forward opening
- Safety guard of metal plate (option: plastic)
- Wire feed motor 25-65 W can be assembled in A1, A3, A5, B2, B4, B6 positions
- Torch connection on the right or left side
- Advantages: small size

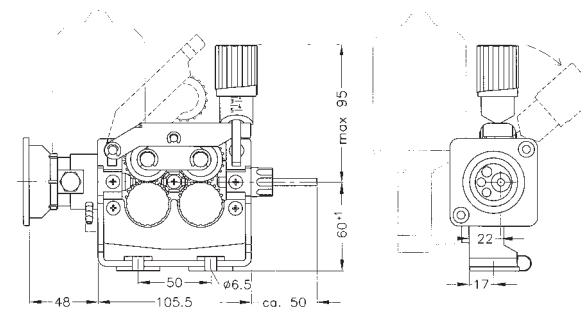
CFW 400

FOUR ROLL WIRE FEED SYSTEM + CENTRAL ADAPTOR

Feeds wire from 0,6 to 2,4 mm (.023"-3/32")



Overall fitting dimensions



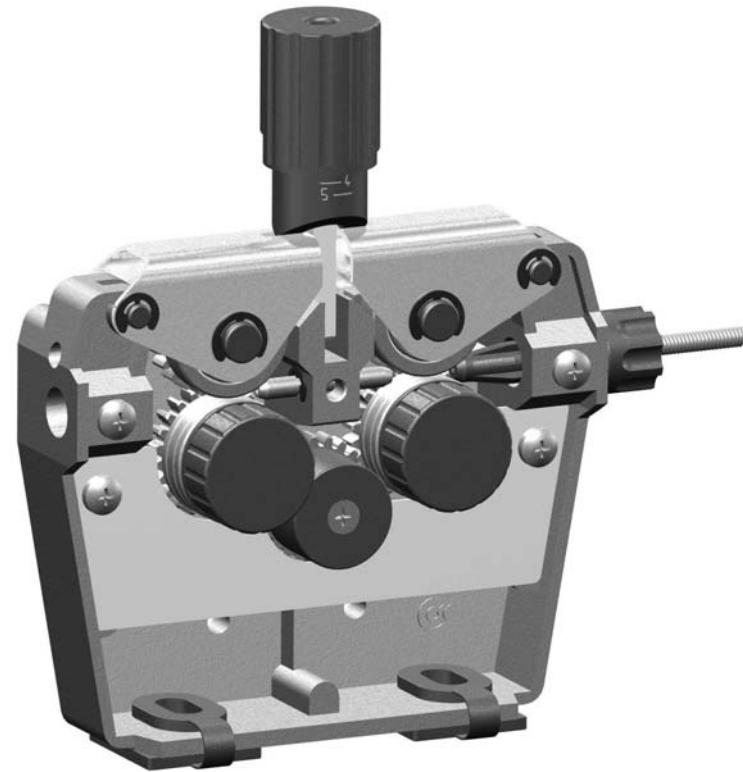
Wire Feed Mechanism of aluminium feed plate + Central adaptor

- CFW 400 + CCA I with feed roll dia 30 mm, pressure arm **with bearing**
- CFW 410 + CCA I with feed roll dia 30 mm, pressure arm **with gear wheel**
- Feed roll dia 30x10/dia 22 mm V or U groove 0,6-0,8 mm
 - 0,8-1,0 mm
 - 1,0-1,2 mm
 - 1,4-1,6 mm
 - U groove 2,0-2,4 mm
- Knurled feed rolls: option
- Pressure arm with lift opening
- Adjusting arm with forward opening
- Safety guard of metal plate (option: plastic)
- Wire feed motor 25-65 W can be assembled in A1, A3, A5, B2, B4, B6 positions
- Torch connection on the right or left side
- Advantages: small size

CFW 40I

FOUR ROLL WIRE FEED SYSTEM

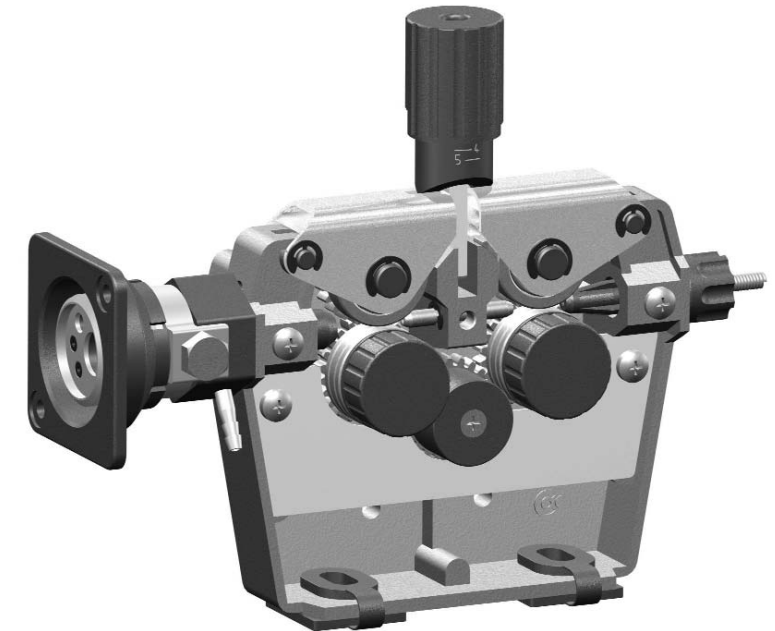
Feeds wire from 0,6 to 2,4 mm (.023"-3/32")



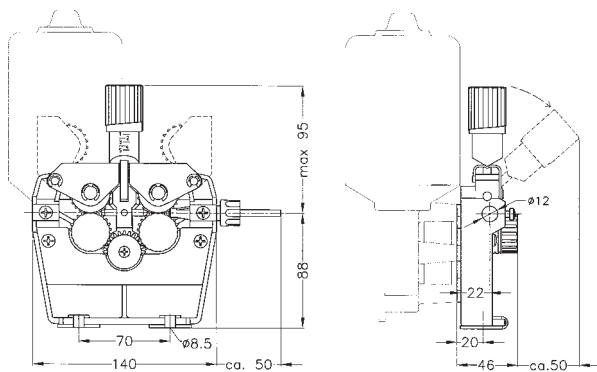
CFW 40I

FOUR ROLL WIRE FEED SYSTEM + CENTRAL ADAPTOR

Feeds wire from 0,6 to 2,4 mm (.023"-3/32")



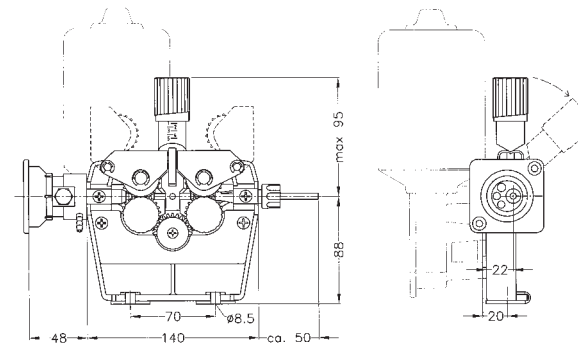
Overall fitting dimensions



Wire Feed Mechanism of aluminium feed plate

- CFW 40I with feed roll dia 30 mm, pressure arm **with bearing**
- CFW 41I with feed roll dia 30 mm, pressure arm **with gear wheel**
- Feed roll dia 30x10/dia 22 mm V or U groove 0,6-0,8 mm
0,8-1,0 mm
1,0-1,2 mm
1,4-1,6 mm
U groove 2,0-2,4 mm
- Knurled feed rolls: option
- Pressure arm with lift opening
- One adjusting arm with forward opening
- Safety guard of metal plate (option: plastic)
- Wire feed motor 25-120 W can be assembled in A1-A6, B1-B6 positions
- Torch connection on the right or left side

Overall fitting dimensions



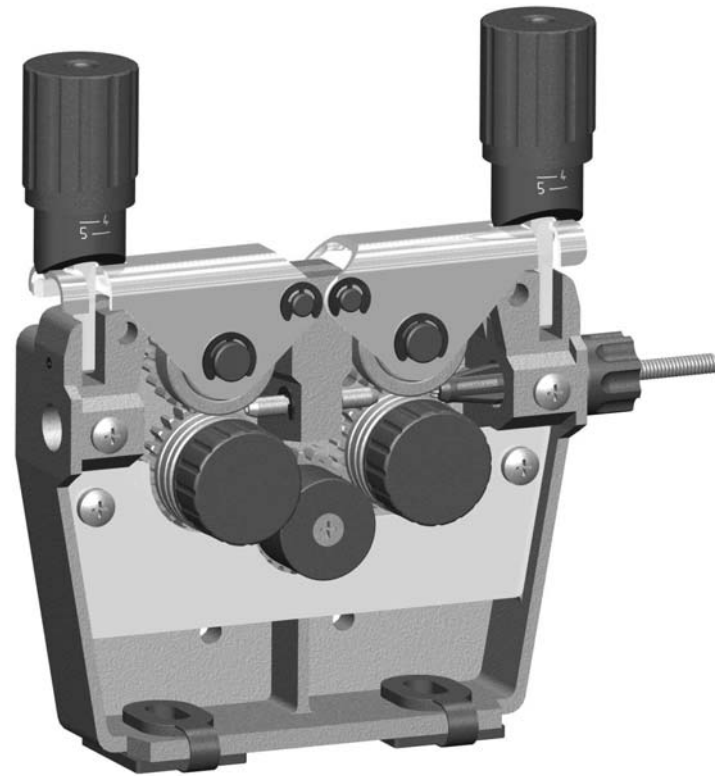
Wire Feed Mechanism of aluminium feed plate + Central adaptor

- CFW 40I + CCA I with feed roll dia 30 mm, pressure arm **with bearing**
- CFW 41I + CCA I with feed roll dia 30 mm, pressure arm **with gear wheel**
- Feed roll dia 30x10/dia 22 mm V or U groove 0,6-0,8 mm
0,8-1,0 mm
1,0-1,2 mm
1,4-1,6 mm
U groove 2,0-2,4 mm
- Knurled feed rolls: option
- Pressure arm with lift opening
- One adjusting arm with forward opening
- Safety guard of metal plate (option: plastic)
- Wire feed motor 25-120 W can be assembled in A1-A6, B1-B6 positions
- Torch connection on the right or left side

CFW 402

FOUR ROLL WIRE FEED SYSTEM

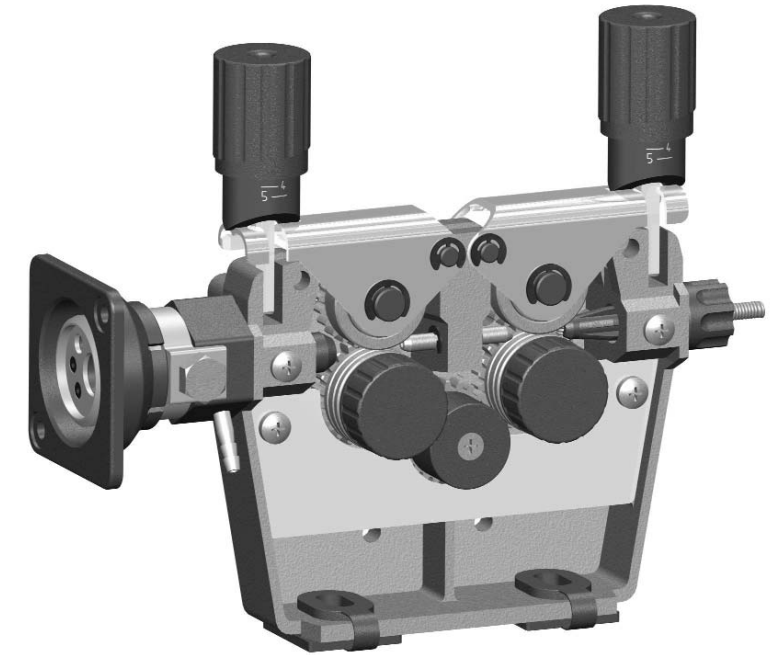
Feeds wire from 0,6 to 2,4 mm (.023"-3/32")



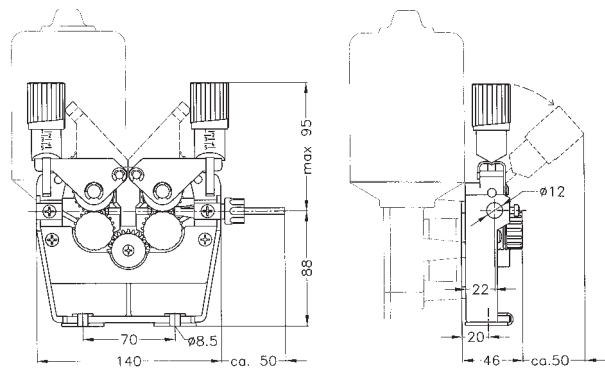
CFW 402

FOUR ROLL WIRE FEED SYSTEM + CENTRAL ADAPTOR

Feeds wire from 0,6 to 2,4 mm (.023"-3/32")



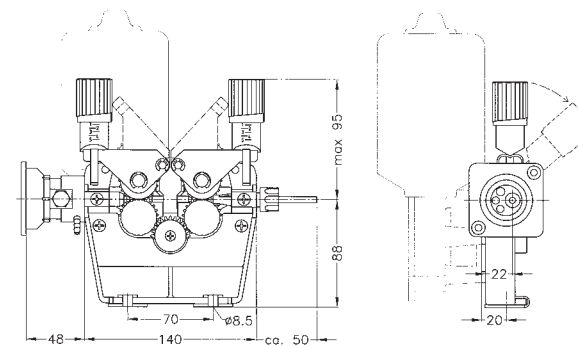
Overall fitting dimensions



Wire Feed Mechanism of aluminium feed plate

- CFW 402 with feed roll dia 30 mm, pressure arm **with bearing**
- CFW 412 with feed roll dia 30 mm, pressure arm **with gear wheel**
- Feed roll dia 30x10/dia 22 mm V or U groove 0,6-0,8 mm
0,8-1,0 mm
1,0-1,2 mm
1,4-1,6 mm
U groove 2,0-2,4 mm
- Knurled feed rolls: option
- Pressure arm with lift opening
- Two adjusting arms with forward opening
- Safety guard of metal plate (option: plastic)
- Wire feed motor 25-120 W can be assembled in A1-A6, B1-B6 positions
- Torch connection on the right or left side

Overall fitting dimensions



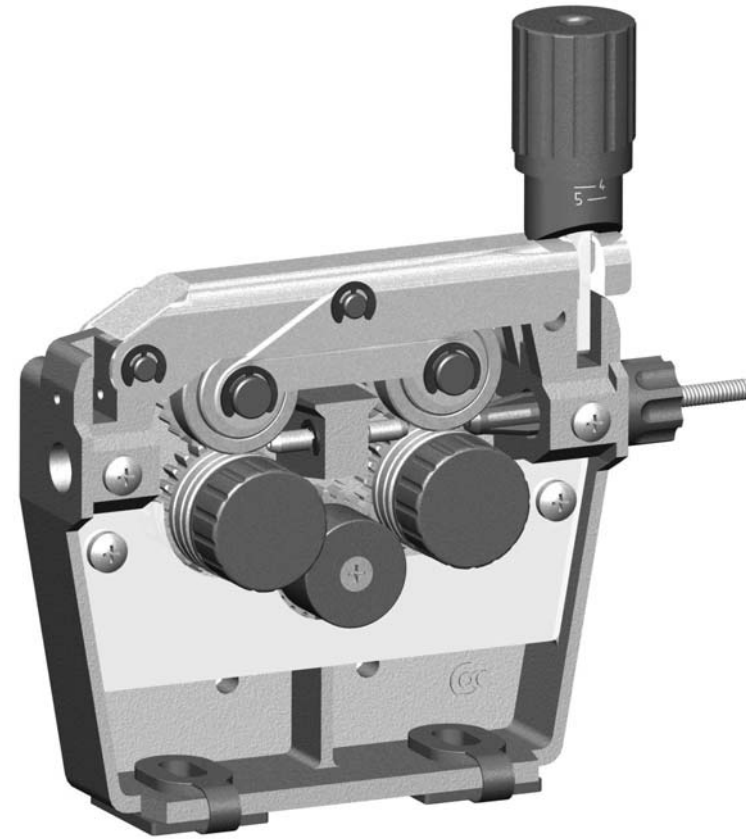
Wire Feed Mechanism of aluminium feed plate + Central adaptor

- CFW 402 + CCA 1 with feed roll dia 30 mm, pressure arm **with bearing**
- CFW 412 + CCA 1 with feed roll dia 30 mm, pressure arm **with gear wheel**
- Feed roll dia 30x10/dia 22 mm V or U groove 0,6-0,8 mm
0,8-1,0 mm
1,0-1,2 mm
1,4-1,6 mm
U groove 2,0-2,4 mm
- Knurled feed rolls: option
- Pressure arm with lift opening
- Two adjusting arms with forward opening
- Safety guard of metal plate (option: plastic)
- Wire feed motor 25-120 W can be assembled in A1-A6, B1-B6 positions
- Torch connection on the right or left side

CFW 403

FOUR ROLL WIRE FEED SYSTEM

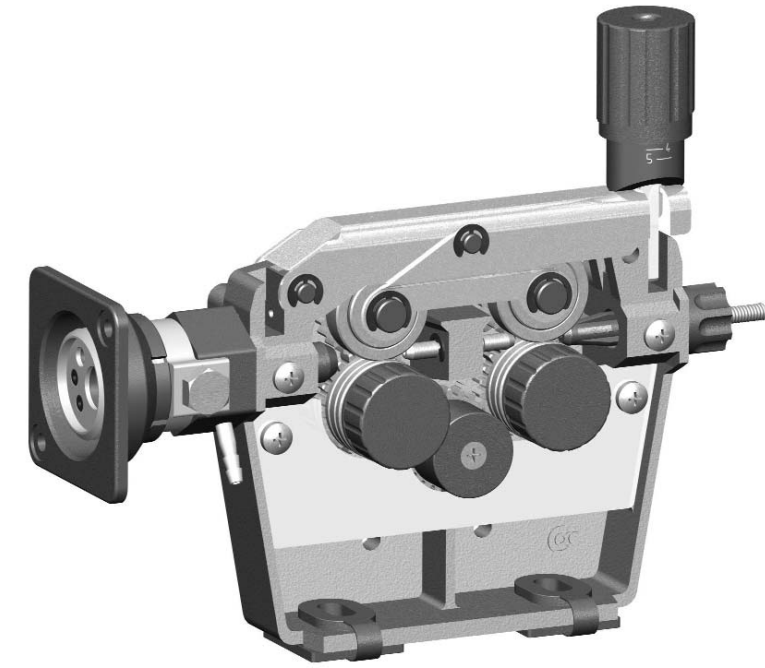
Feeds wire from 0,6 to 2,4 mm (.023"-3/32")



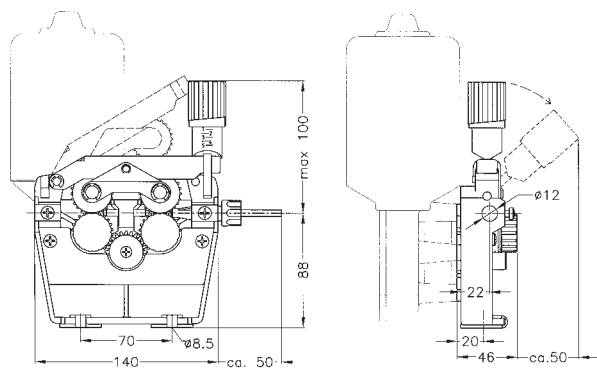
CFW 403

FOUR ROLL WIRE FEED SYSTEM + CENTRAL ADAPTOR

Feeds wire from 0,6 to 2,4 mm (.023"-3/32")



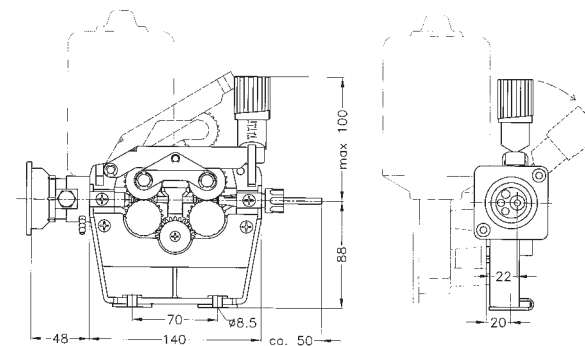
Overall fitting dimensions



Wire Feed Mechanism of aluminium feed plate

- CFW 403 with feed roll dia 30 mm, pressure arm **with bearing**
- CFW 413 with feed roll dia 30 mm, pressure arm **with gear wheel**
- Feed roll dia 30x10/dia 22 mm V or U groove 0,6-0,8 mm
0,8-1,0 mm
1,0-1,2 mm
1,4-1,6 mm
U groove 2,0-2,4 mm
- Knurled feed rolls: option
- Pressure arm with lift opening
- One adjusting arm with forward opening
- Safety guard of metal plate (option: plastic)
- Wire feed motor 25-120 W can be assembled in A1-A6, B1-B6 positions
- Torch connection on the right or left side

Overall fitting dimensions



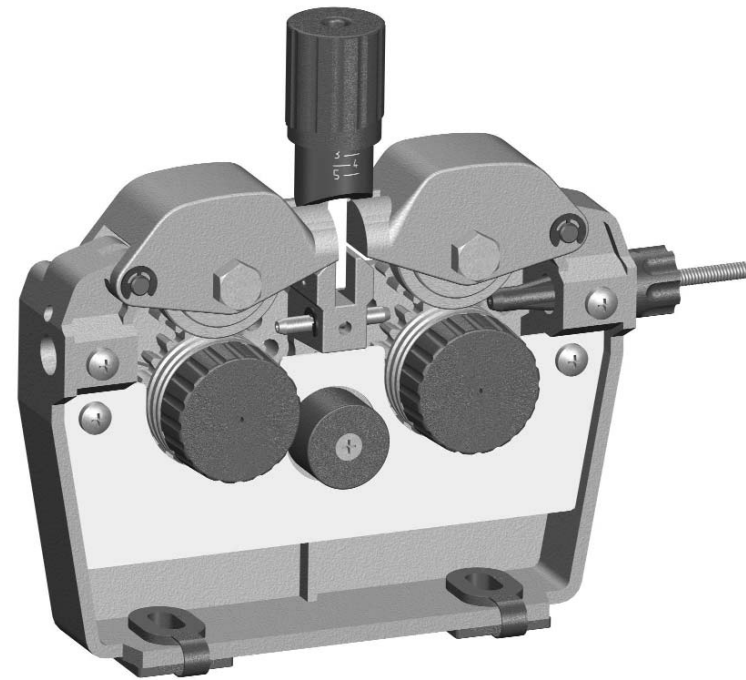
Wire Feed Mechanism of aluminium feed plate + Central adaptor

- CFW 403 + CCA I with feed roll dia 30 mm, pressure arm **with bearing**
- CFW 413 + CCA I with feed roll dia 30 mm, pressure arm **with gear wheel**
- Feed roll dia 30x10/dia 22 mm V or U groove 0,6-0,8 mm
0,8-1,0 mm
1,0-1,2 mm
1,4-1,6 mm
U groove 2,0-2,4 mm
- Knurled feed rolls: option
- Pressure arm with lift opening
- One adjusting arm with forward opening
- Safety guard of metal plate (option: plastic)
- Wire feed motor 25-120 W can be assembled in A1-A6, B1-B6 positions
- Torch connection on the right or left side

CFW 50I

FOUR ROLL WIRE FEED SYSTEM

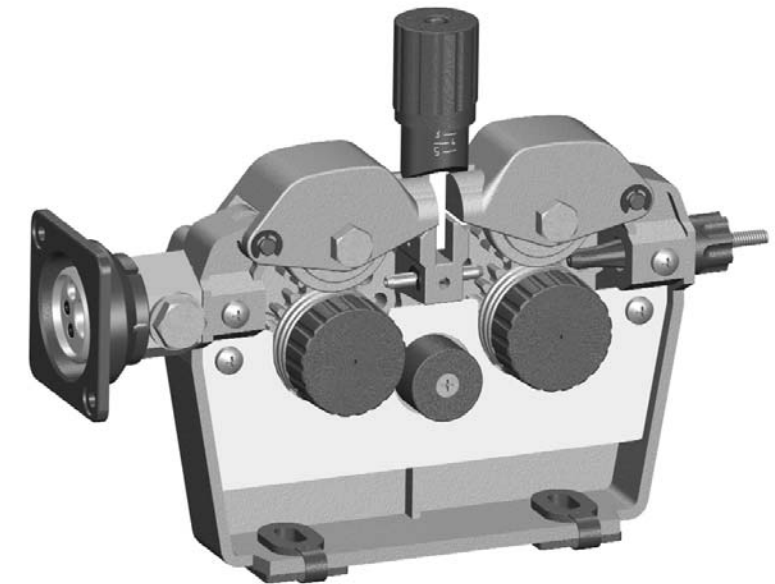
Feeds wire from 0,6 to 3,2 mm (.023"-1/8")



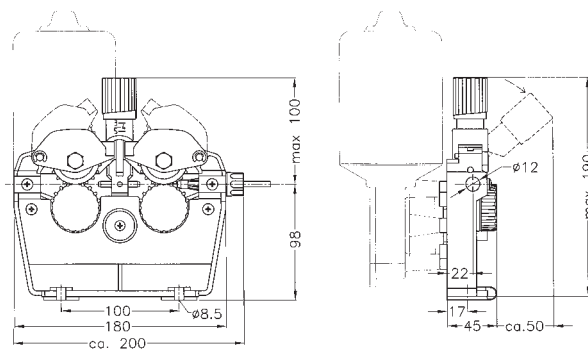
CFW 50I

FOUR ROLL WIRE FEED SYSTEM + CENTRAL ADAPTOR

Feeds wire from 0,6 to 3,2 mm (.023"-1/8")



Overall fitting dimensions

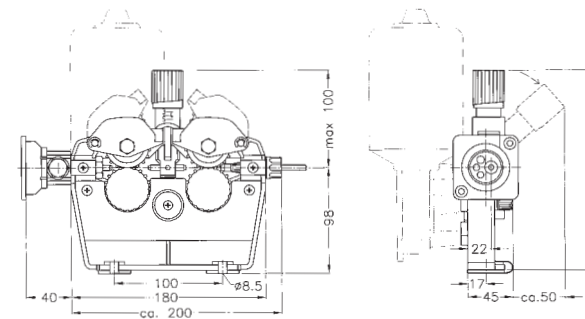


Wire Feed Mechanism of aluminium feed plate

- CFW 50I with feed roll dia 40 mm, pressure arm **with bearing**
- CFW 51I with feed roll dia 40 mm, pressure arm **with gear wheel**
- Feed roll dia 40x10/dia 32 mm V or U groove
 - 0,6-0,8 mm
 - 1,0-1,2 mm
 - 1,4-1,6 mm
 - 2,0-2,4 mm
 - U groove 2,4-2,8 mm
 - 2,8-3,2 mm

- Knurled feed rolls: option
- Pressure arm with lift opening
- One adjusting arm with forward opening
- Safety guard of metal plate (option: plastic)
- Wire feed motor 40-120 W can be assembled in A1-A6, B1-B6 positions
- Torch connection on the right or left side

Overall fitting dimensions



Wire Feed Mechanism of aluminium feed plate + Central adaptor

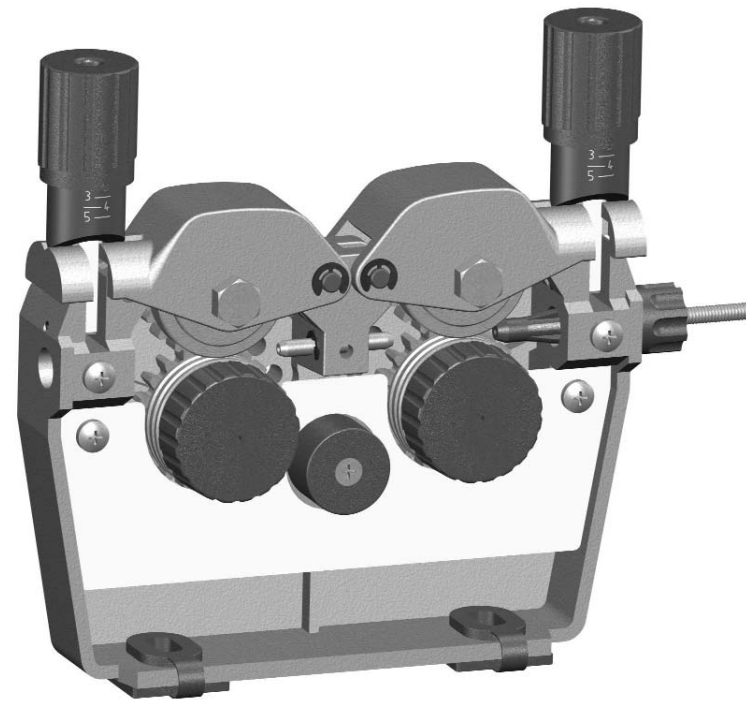
- CFW 50I + ECA 3 with feed roll dia 40 mm, pressure arm **with bearing**
- CFW 51I + ECA 3 with feed roll dia 40 mm, pressure arm **with gear wheel**
- Feed roll dia 40x10/dia 32 mm V or U groove
 - 0,6-0,8 mm
 - 1,0-1,2 mm
 - 1,4-1,6 mm
 - 2,0-2,4 mm
 - U groove 2,4-2,8 mm
 - 2,8-3,2 mm

- Knurled feed rolls: option
- Pressure arm with lift opening
- One adjusting arm with forward opening
- Safety guard of metal plate (option: plastic)
- Wire feed motor 40-120 W can be assembled in A1-A6, B1-B6 positions
- Torch connection on the right or left side

CFW 502

FOUR ROLL WIRE FEED SYSTEM

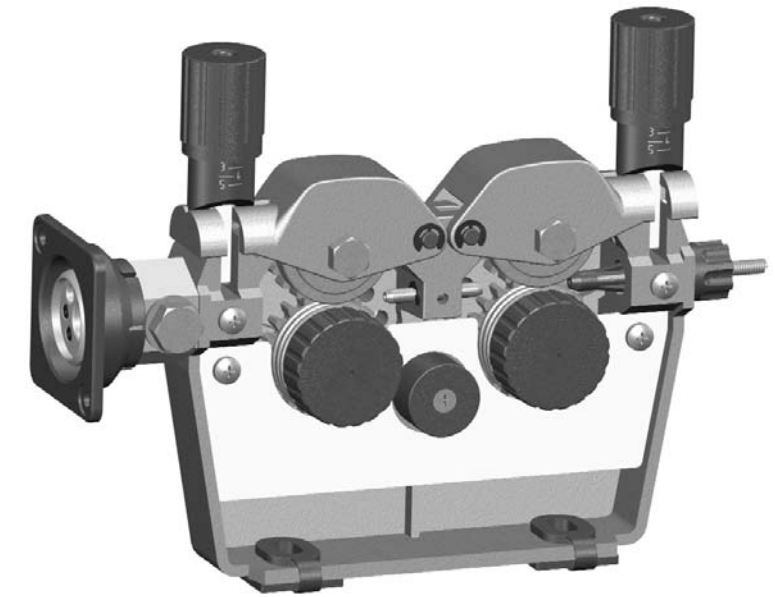
Feeds wire from 0,6 to 3,2 mm (.023"-1/8")



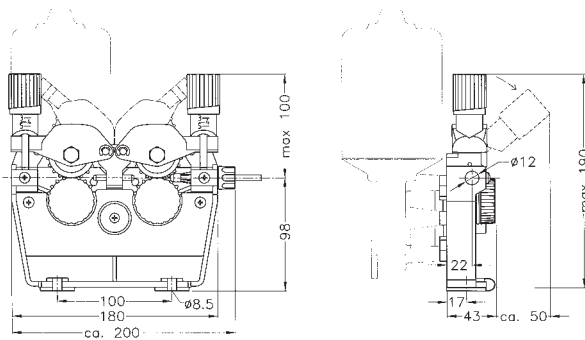
CFW 502

FOUR ROLL WIRE FEED SYSTEM + CENTRAL ADAPTOR

Feeds wire from 0,6 to 3,2 mm (.023"-1/8")



Overall fitting dimensions

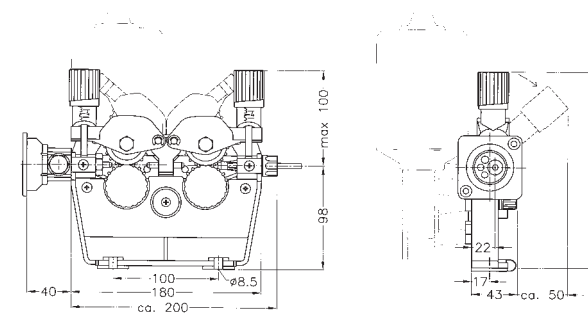


Wire Feed Mechanism of aluminium feed plate

- CFW 502 with feed roll dia 40 mm, pressure arm **with bearing**
- CFW 512 with feed roll dia 40 mm, pressure arm **with gear wheel**
- Feed roll dia 40x10/dia 32 mm V or U groove
 - 0,6-0,8 mm
 - 0,8-1,0 mm
 - 1,0-1,2 mm
 - 1,4-1,6 mm
 - 2,0-2,4 mm
 - U groove 2,4-2,8 mm
 - 2,8-3,2 mm

- Knurled feed rolls: option
- Pressure arm with lift opening
- Two adjusting arms with forward opening
- Safety guard of metal plate (option: plastic)
- Wire feed motor 40-120 W can be assembled in A1-A6, B1-B6 positions
- Torch connection on the right or left side

Overall fitting dimensions



Wire Feed Mechanism of aluminium feed plate + Central adaptor

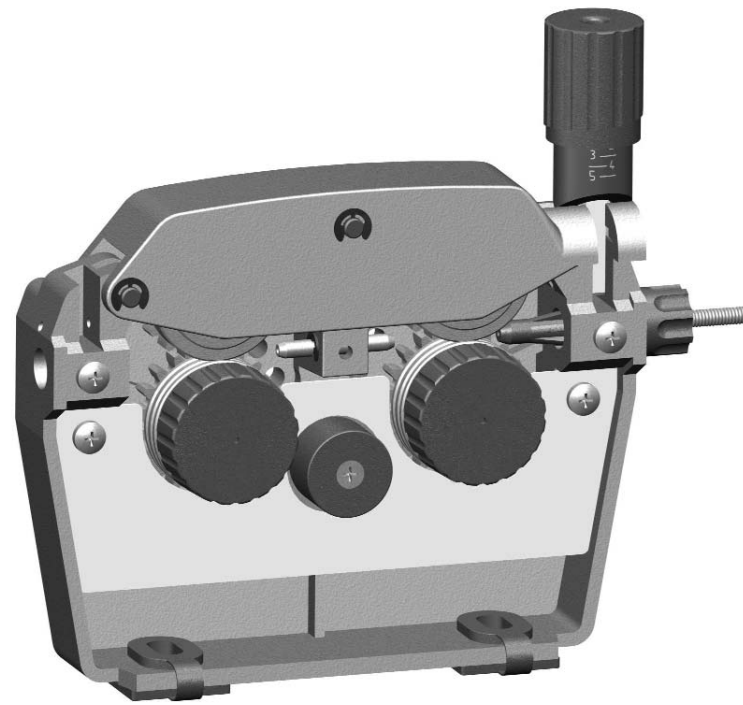
- CFW 502 + ECA 3 with feed roll dia 40 mm, pressure arm **with bearing**
- CFW 512 + ECA 3 with feed roll dia 40 mm, pressure arm **with gear wheel**
- Feed roll dia 40x10/dia 32 mm V or U groove
 - 0,6-0,8 mm
 - 0,8-1,0 mm
 - 1,0-1,2 mm
 - 1,4-1,6 mm
 - 2,0-2,4 mm
 - U groove 2,4-2,8 mm
 - 2,8-3,2 mm

- Knurled feed rolls: option
- Pressure arm with lift opening
- Two adjusting arms with forward opening
- Safety guard of metal plate (option: plastic)
- Wire feed motor 40-120 W can be assembled in A1-A6, B1-B6 positions
- Torch connection on the right or left side

CFW 503

FOUR ROLL WIRE FEED SYSTEM

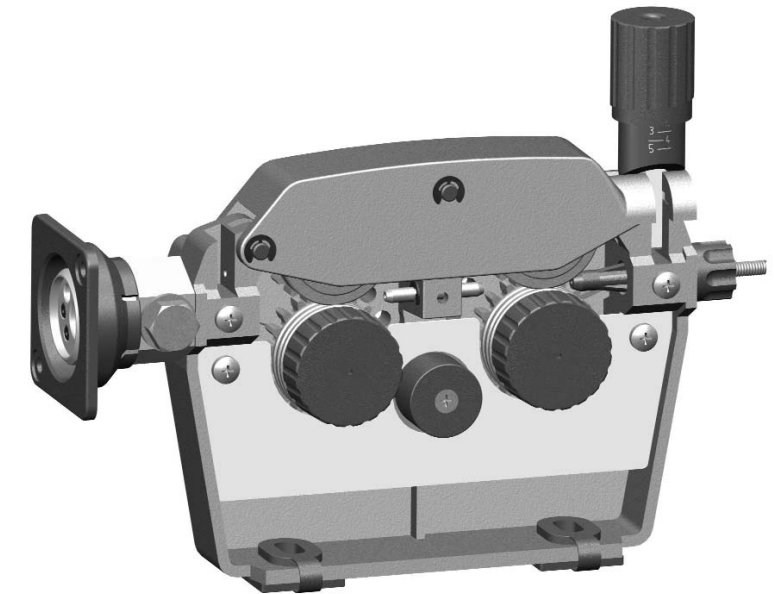
Feeds wire from 0,6 to 3,2 mm (.023"-1/8")



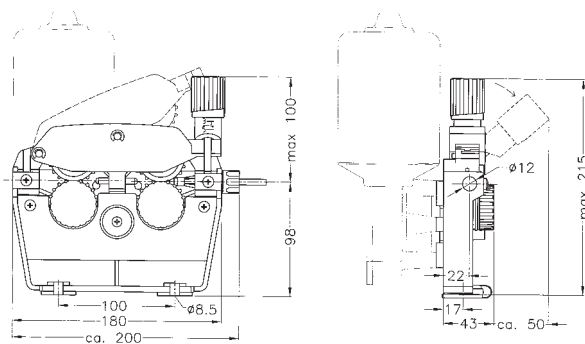
CFW 503

FOUR ROLL WIRE FEED SYSTEM + CENTRAL ADAPTOR

Feeds wire from 0,6 to 3,2 mm (.023"-1/8")



Overall fitting dimensions

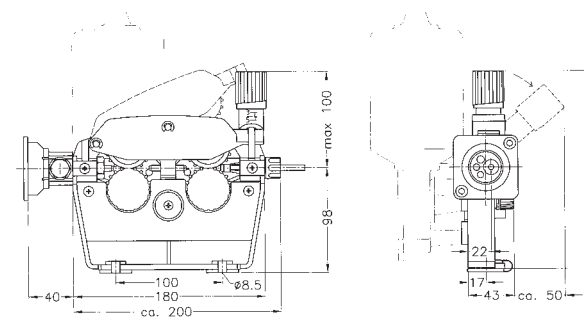


Wire Feed Mechanism of aluminium feed plate

- CFW 503 with feed roll dia 40 mm, pressure arm **with bearing**
- CFW 513 with feed roll dia 40 mm, pressure arm **with gear wheel**
- Feed roll dia 40x10/dia 32 mm V or U groove
 - 0,6-0,8 mm
 - 0,8-1,0 mm
 - 1,0-1,2 mm
 - 1,4-1,6 mm
 - 2,0-2,4 mm
 - U groove 2,4-2,8 mm
 - 2,8-3,2 mm

- Knurled feed rolls: option
- Pressure arm with lift opening
- One adjusting arm with forward opening
- Safety guard of metal plate (option: plastic)
- Wire feed motor 40-120 W can be assembled in A1-A6, B1-B6 positions
- Torch connection on the right or left side

Overall fitting dimensions



Wire Feed Mechanism of aluminium feed plate + Central adaptor

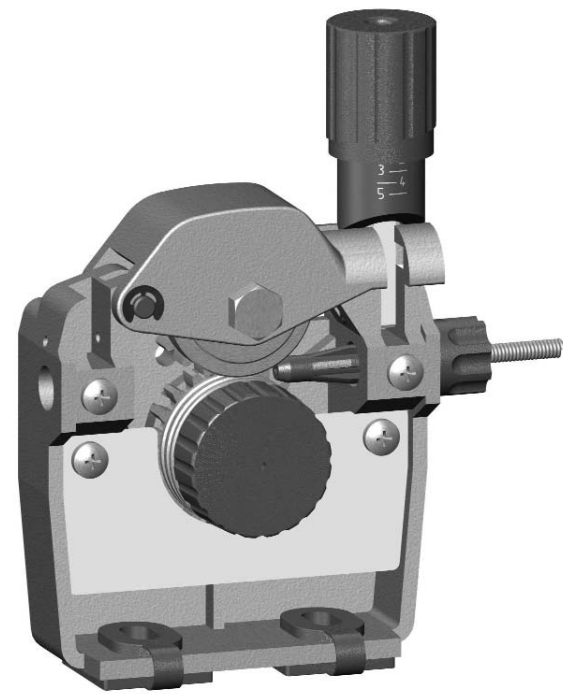
- CFW 503 + ECA 3 with feed roll dia 40 mm, pressure arm **with bearing**
- CFW 513 + ECA 3 with feed roll dia 40 mm, pressure arm **with gear wheel**
- Feed roll dia 40x10/dia 32 mm V or U groove
 - 0,6-0,8 mm
 - 0,8-1,0 mm
 - 1,0-1,2 mm
 - 1,4-1,6 mm
 - 2,0-2,4 mm
 - U groove 2,4-2,8 mm
 - 2,8-3,2 mm

- Knurled feed rolls: option
- Pressure arm with lift opening
- One adjusting arm with forward opening
- Safety guard of metal plate (option: plastic)
- Wire feed motor 40-120 W can be assembled in A1-A6, B1-B6 positions
- Torch connection on the right or left side

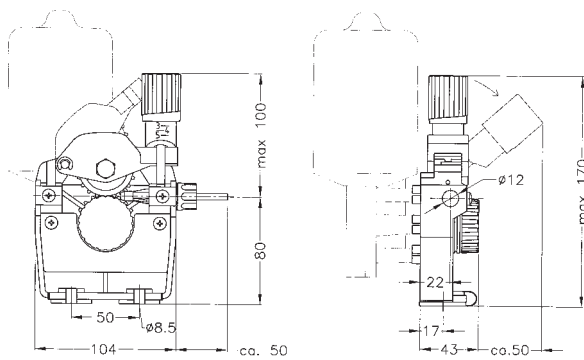
CFW 600

TWO ROLL WIRE FEED SYSTEM

Feeds wire from 0,6 to 3,2 mm (.023"-1/8")



Overall fitting dimensions



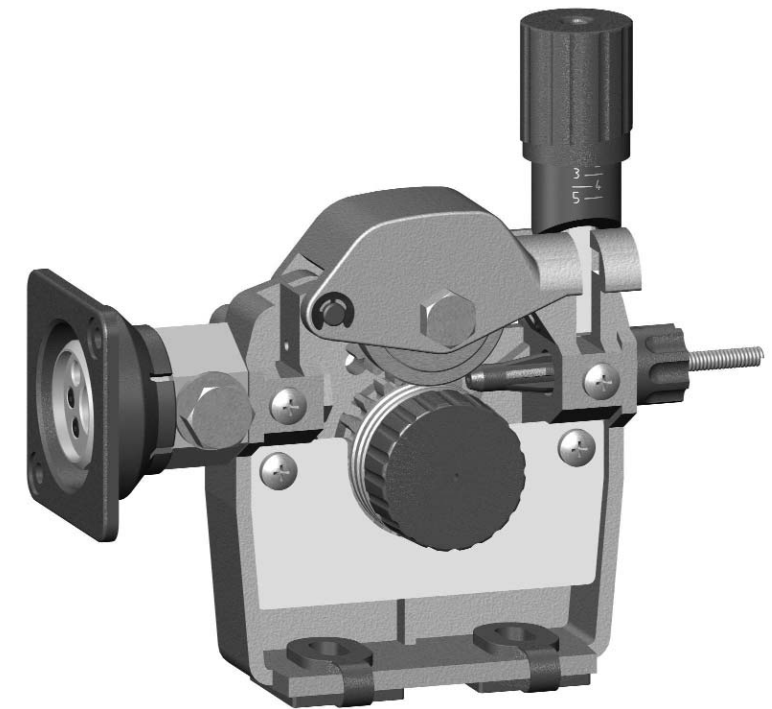
Wire Feed Mechanism of aluminium feed plate

- CFW 600 with feed roll dia 40 mm, pressure arm **with bearing**
- CFW 610 with feed roll dia 40 mm, pressure arm **with gear wheel**
- Feed roll dia 40x10/dia 32 mm V or U groove
 - 0,6-0,8 mm
 - 0,8-1,0 mm
 - 1,0-1,2 mm
 - 1,4-1,6 mm
 - 2,0-2,4 mm
 - U groove 2,4-2,8 mm
 - 2,8-3,2 mm
- Knurled feed rolls: option
- Pressure arm with lift opening
- One adjusting arm with forward opening
- Safety guard of metal plate (option: plastic)
- Wire feed motor 40-120 W can be assembled in A1-A6, B1-B6 positions
- Torch connection on the right or left side

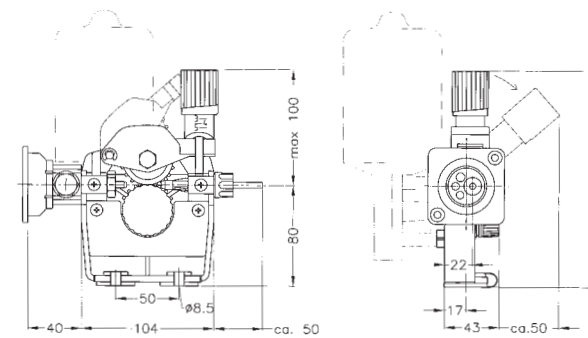
CFW 600

TWO ROLL WIRE FEED SYSTEM + CENTRAL ADAPTOR

Feeds wire from 0,6 to 3,2 mm (.023"-1/8")



Overall fitting dimensions



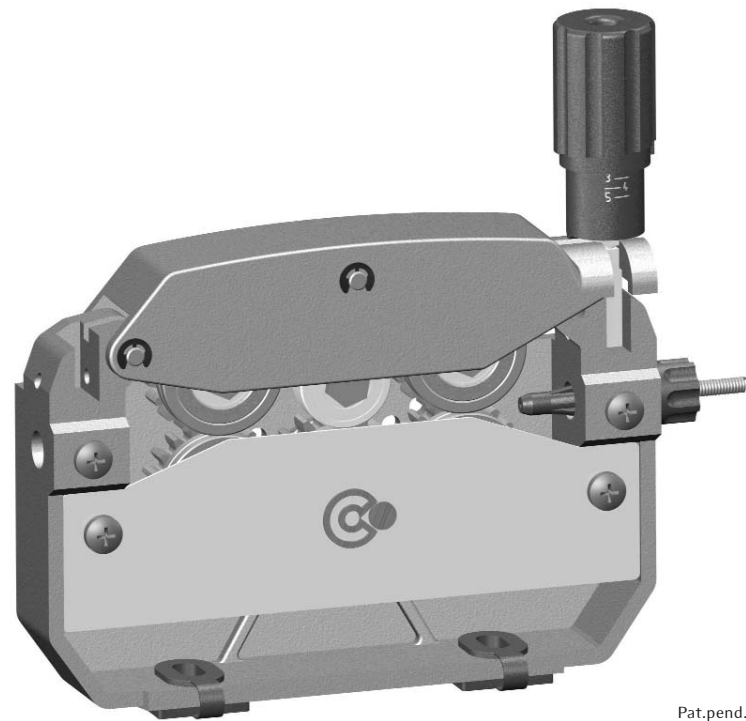
Wire Feed Mechanism of aluminium feed plate + Central adaptor

- CFW 600 + ECA 3 with feed roll dia 40 mm, pressure arm **with bearing**
- CFW 610 + ECA 3 with feed roll dia 40 mm, pressure arm **with gear wheel**
- Feed roll dia 40x10/dia 32 mm V or U groove
 - 0,6-0,8 mm
 - 0,8-1,0 mm
 - 1,0-1,2 mm
 - 1,4-1,6 mm
 - 2,0-2,4 mm
 - U groove 2,4-2,8 mm
 - 2,8-3,2 mm
- Knurled feed rolls: option
- Pressure arm with lift opening
- One adjusting arm with forward opening
- Safety guard of metal plate (option: plastic)
- Wire feed motor 40-120 W can be assembled in A1-A6, B1-B6 positions
- Torch connection on the right or left side

CFW 700

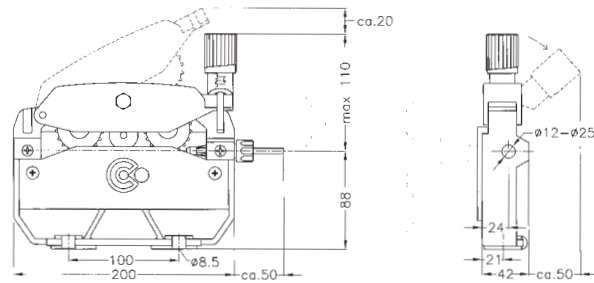
FOUR ROLL WIRE FEED SYSTEM

Feeds wire from 1,0 to 4,0 mm (.040"-5/32")



Pat.pend.

Overall fitting dimensions



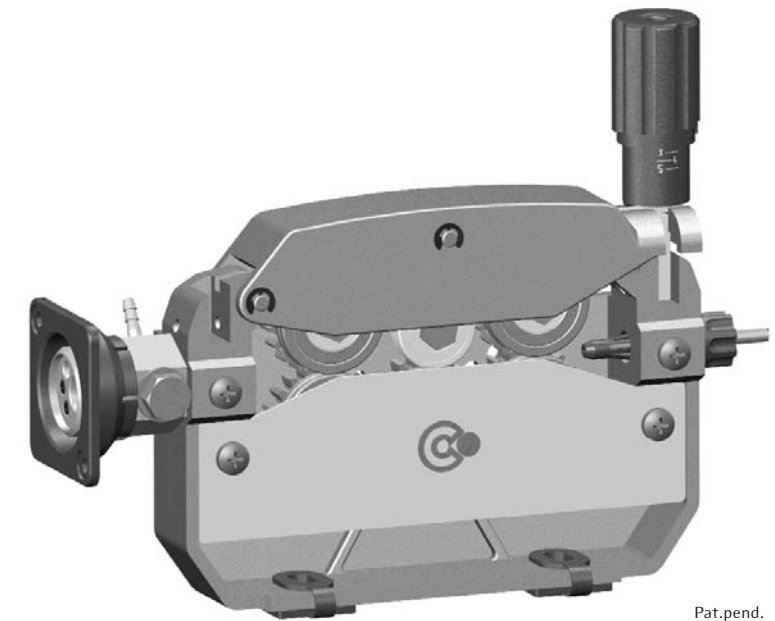
Wire Feed Mechanism of aluminium feed plate for special industrial welding applications

- Feed rolls **with gear wheel** dia 40 mm V an U groove 1,0.....4,0 mm (knurled: option)
- Pressure arm with gear wheel and with lift opening
- Robust body
- Construction with reduced wire shaving
- Wider, stronger gear wheels
- Grooved upper rolls
- One adjusting arm with forward opening
- Safety guard of metal plate (aluminium casting: option)
- Wire feed motor of 120 W can be assembled in A1-A6, B1-B6 positions
- Torch connection on the right or left side
- Option: Wire straighteners type WS 3 or WS 5 are selectable and can be built in

CFW 700

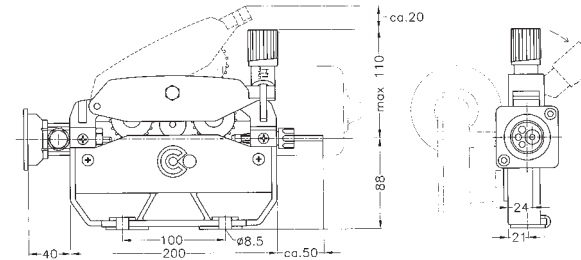
FOUR ROLL WIRE FEED SYSTEM + CENTRAL ADAPTOR

Feeds wire from 1,0 to 4,0 mm (.040"-5/32")



Pat.pend.

Overall fitting dimensions



Wire Feed Mechanism of aluminium feed plate for special industrial welding applications + ECA 3 central adaptor

- Feed rolls **with gear wheel** dia 40 mm V an U groove 1,0.....4,0 mm (knurled: option)
- Pressure arm with gear wheel and with lift opening
- Robust body
- Construction with reduced wire shaving
- Wider, stronger gear wheels
- Grooved upper rolls
- One adjusting arm with forward opening
- Safety guard of metal plate (aluminium casting: option)
- Wire feed motor of 120 W can be assembled in A1-A6, B1-B6 positions
- Torch connection on the right or left side
- Option: Wire straighteners type WS 3 or WS 5 are selectable and can be built in

WIRE FEED MOTORS



Ankarsrum Motors AB, Sweden

Type	Parameters	Speed max. m/Min.		Form
		dia 30	dia 40	
KSV 4030/213 E	24 V 200 r.p.m.	18,8	25,1	B
KSV 4030/182	24 V 200 r.p.m.	18,8	25,1	B
KSV 4030/186	42 V 200 r.p.m.	18,8	25,1	B
KSV 5035/551	24 V 200 r.p.m.	18,8	25,1	B
KSV 5035/557	42 V 200 r.p.m.	18,8	25,1	B
KSV 5035/556T with tachometer	24 V 200 r.p.m.	18,8	25,1	B
KSV 5035/661 with optical reader	42 V 200 r.p.m.	18,8	25,1	B



ELVI s.r.l., Italy

Type	Parameters	Speed max. m/Min.		Form
		dia 30	dia 40	
100.607	24 V 225 r.p.m.	19,8	26,38	B
100.694	24 V 210 r.p.m.	19,8	26,38	B
100.701	24 V 210 r.p.m.	19,8	26,38	B
100.707	42 V 210 r.p.m.	19,8	26,38	A
100.701T with tachometer	24 V 210 r.p.m.	19,8	26,38	B



OSLV Italia s.r.l., Italy

Type	Parameters	Speed max. m/Min.		Form
		dia 30	dia 40	
9900006	24 V 120 r.p.m.	11,3	15,3	B
9901005	24 V 160 r.p.m.	15,1	20,1	A
9901030	24 V 160 r.p.m.	15,1	20,1	A
9901033	42 V 160 r.p.m.	15,1	20,1	A
9902030	24 V 220 r.p.m.	20,7	27,6	B
9902066	42 V 150 r.p.m.	14,15	16,43	B
9902017	42 V 200 r.p.m.	18,8	25,0	B

WIRE FEED ROLLS



Standard sizes of the Cooptim feed rolls with keyway:

- dia 30 x 12 / dia 10
- dia 30 x 10 / dia 22
- dia 40 x 10 / dia 22
- dia 40 x 10 / dia 32

Standard wire sizes:

0,6-0,8 mm	1,4-1,6 mm
0,8-1,0 mm	1,6-2,0 mm
0,9-1,2 mm	1,6-2,4 mm
1,0-1,2 mm	2,0-2,4 mm
1,2-1,4 mm	2,4-2,8 mm
1,2-1,6 mm	2,8-3,2 mm

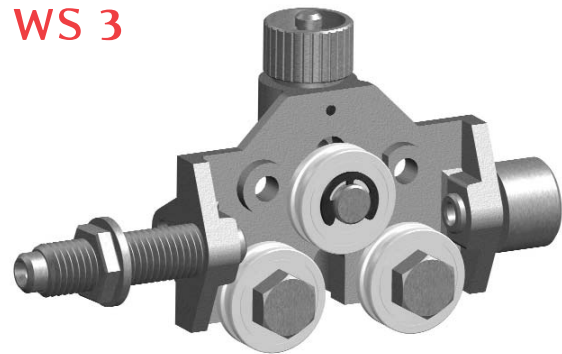
Wire feed rolls

- Material: heat treated steel 60±2 HRC (sintered steel: option)
- "V" groove for hard wire
- "VK" V knurled groove for hard-shelled cored wire
- "U" groove for soft wire or soft-shelled cored wire
- "UK" U knurled groove for extremely soft wire
- Feed rolls with insulated core

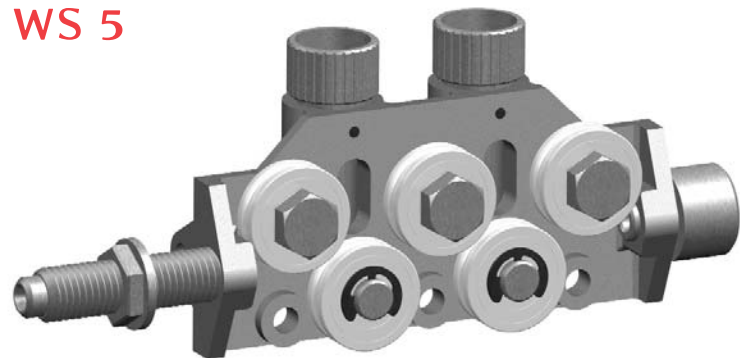
Feed rolls can be produced upon special drawings or samples for all kinds of wires and in all sizes

WIRE STRAIGHTENERS

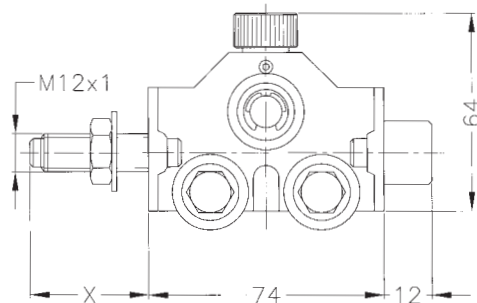
WS 3



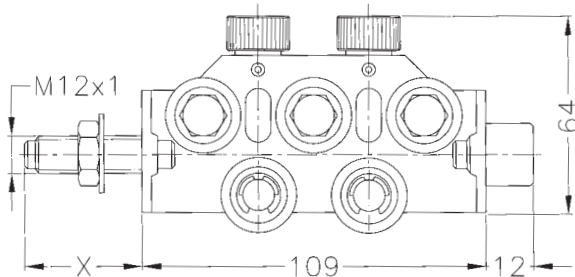
WS 5



Overall fitting dimensions of WS 3



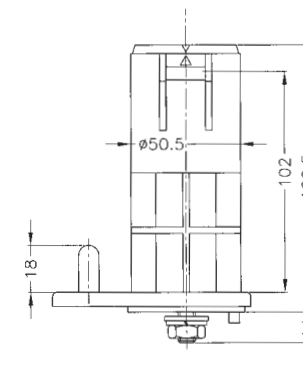
Overall fitting dimensions of WS 5



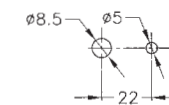
Wire straighteners

- For straightening of all kinds of wires up to dia 4 mm
- Precision steel casting body
- Straightener rollers of bearing
- Can be connected to all wire feed mechanisms

Overall sizes



Fixing holes



- Black plastic body
- Cap of different colours (option)
- Built in brake
- Loading limit: 15 kg
- Plastic adapter ring for 5 kg wire (option)

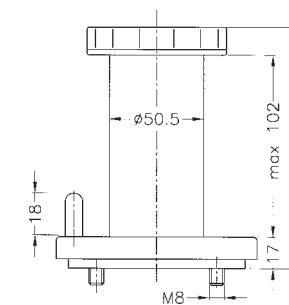
NORMAL REEL HUB ASSEMBLIES



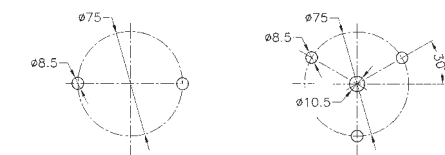
STANDARD REEL HUB ASSEMBLIES

- Black plastic body
- Cap of different colours (option)
- Built in brake
- Loading limit: 15 kg Standard 1
30 kg Standard 2
- Plastic adapter ring for 5 kg wire (option)

Overall sizes



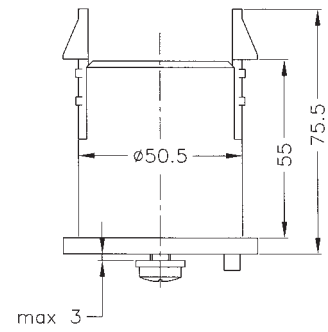
Fixing holes



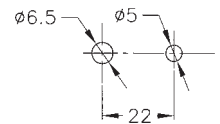
15 kg Standard 1

30 kg Standard 2

Overall sizes



Fixing holes



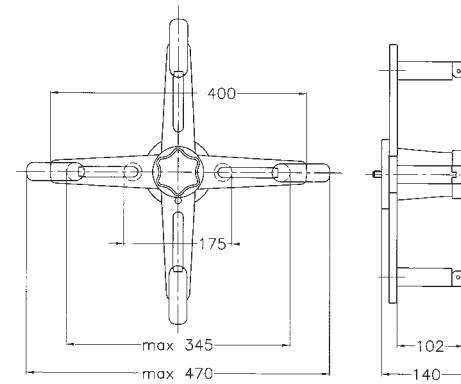
- Black plastic body
- Loading limit: 5 kg

MINI 1

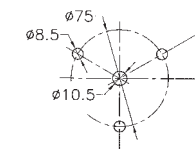
REEL HUB ASSEMBLIES



Overall sizes

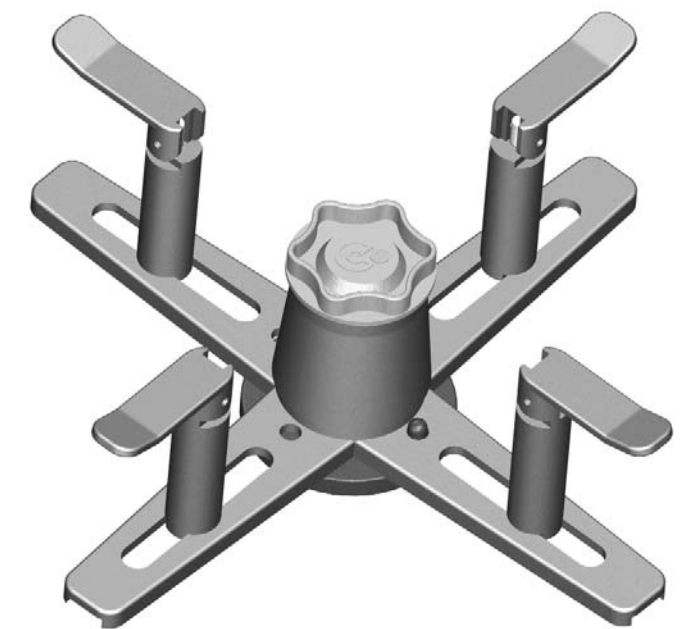


Fixing holes



- Aluminium construction
- With built in Standard 2
- Loading limit: 30 kg

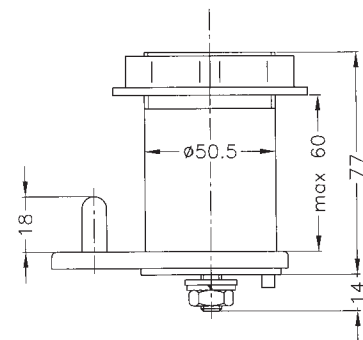
WIRE REELERS



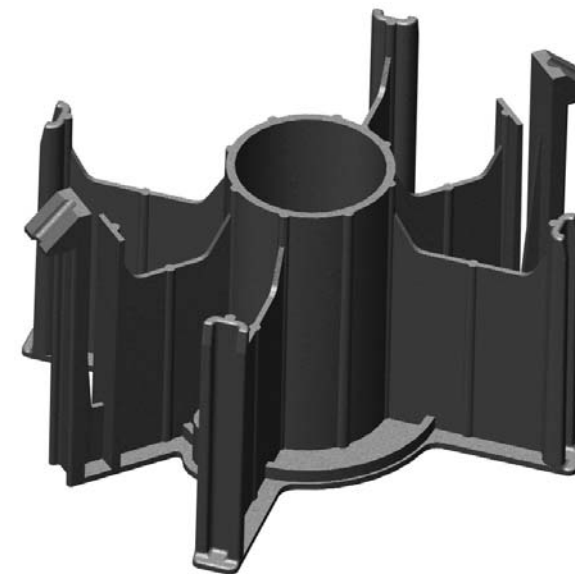
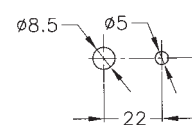
MINI 2
REEL HUB ASSEMBLIES

- Black plastic body
- Cap of different colours (option)
- Built in brake
- Loading limit: 5 kg

Overall sizes



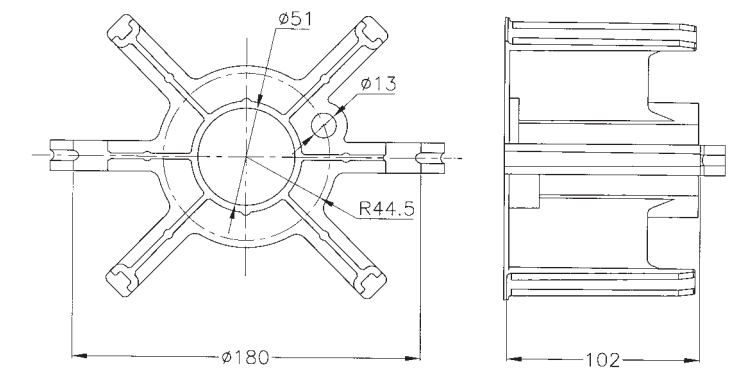
Fixing holes



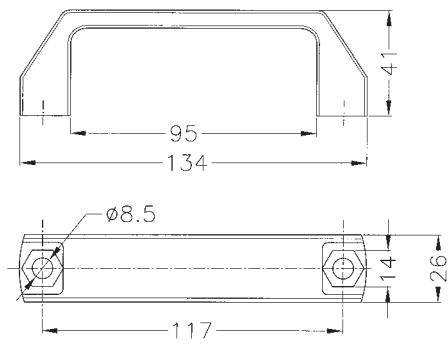
BASKET FOR WELDING WIRE

- Plastic body
- Loading limit: 15 kg

Overall sizes



Overall sizes / fixing holes



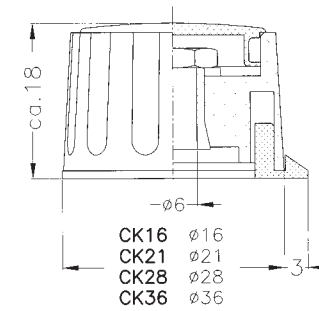
- Material: plastic of glass fibre
- Colour: black
- Easy mounting with M8 hexagon socket head screw (DIN 912), or with M8 slotted cheese head screw (DIN 84)

EH HANDLES

For welding machines and electrical equipment



Overall sizes



Collet knobs in four different sizes and colours

- The knobs are fixed onto the spindles by means of the proven collet tightening system, fixed to the shaft dia 6 mm
- Caps, pointers, nut covers are simply plugged onto the collet knobs
- Standard colours: black and red, on request green, grey and yellow are also available
- Material: caps, pointers, nut covers from polyamid collet, sleeves and nuts from brass

COLLET KNOBS

For welding machines and electrical equipment



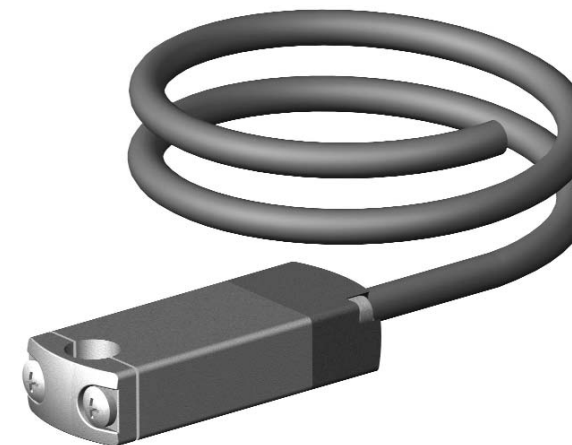
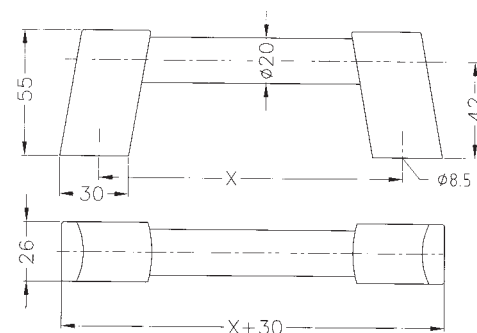
UH HANDLES

For welding machines and electrical equipment

Handels in different sizes and colours

- Material: handle shank from black plastic of glass fibre
- Connecting tubes from steel in different colours
- Easy mounting with M8 hexagon head bolts (DIN 931)
- X = standard: 150, 200, 250, 300, 350, 400 mm, other sizes: option
- Standard colours: black, red, yellow, grey
- Option: also in other colours

Overall sizes / fixing holes



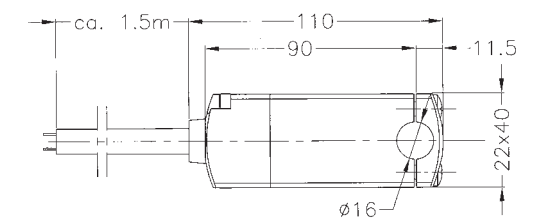
GAS PREHEATERS

For CO₂ regulators

Aluminium body with 1.5 m rubber cable

- GP 1 24 V, 35 W, AC/DC
- GP 2 42 V, 35 W, AC/DC
- GP 3 220 V, 45 W, AC/DC

Overall sizes



EURO CENTRAL ADAPTORS

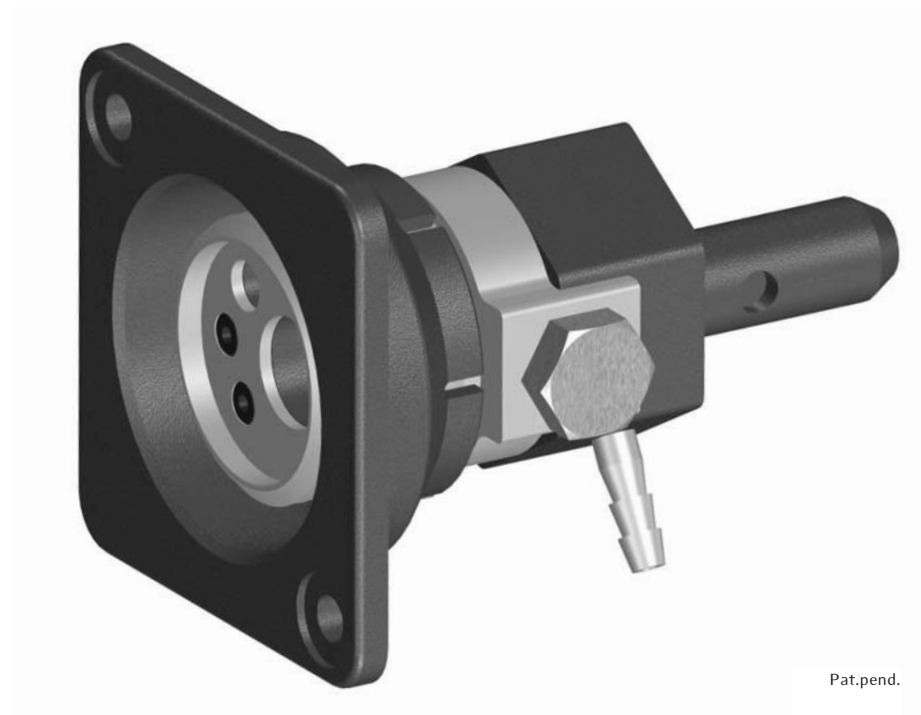
For welding machines

The COOPTIM Euro Central Adaptor System is a new development. The central adaptor has new solutions, besides the technical data are the same as the well known international models.

CCA 1 type up to 250 Amps

ECA 2 type up to 350 Amps

ECA 3 type up to 450 Amps



Pat.pend.

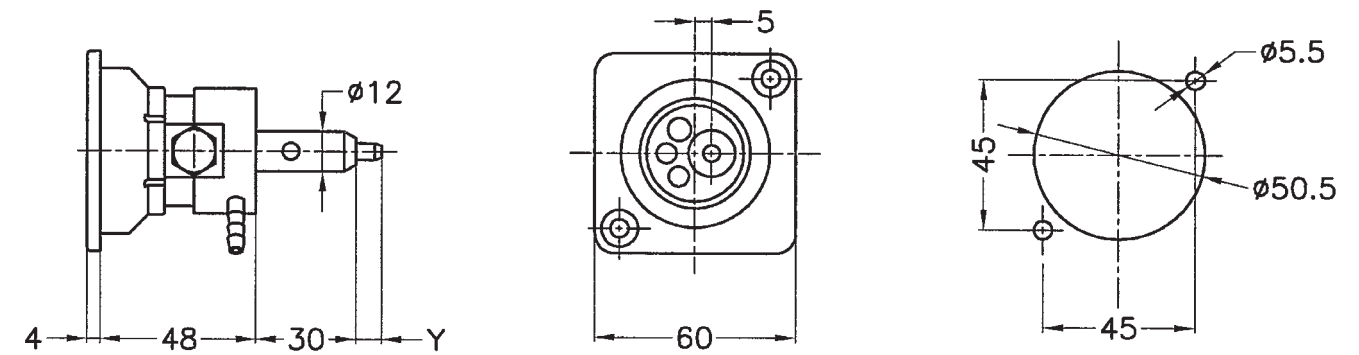
Advantages

- Simple mounting
- Flush mounted construction
- **SSF** snap-in system fixing without screw
- With screw option
- Needs small place inside the equipment
- Axial or radial current connection
- Axial or radial gas connection
- 60 % duty circle
- Plastic house of glas fibre
- Switch wire 2x0,75 mm², length 500 mm
- Gas hose and clamp (option)

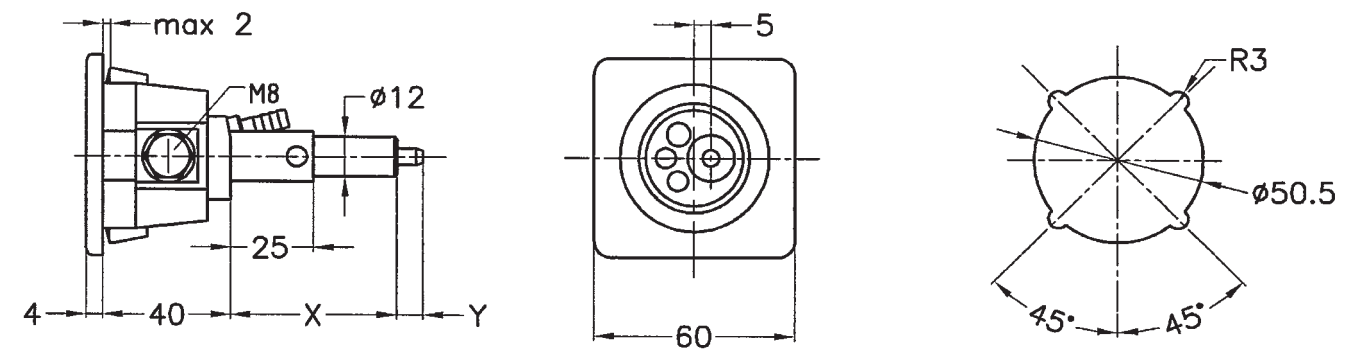
Overall dimensions

Fixing holes

CCA 1



ECA 2 SSF snap-in system fixing



ECA 3

