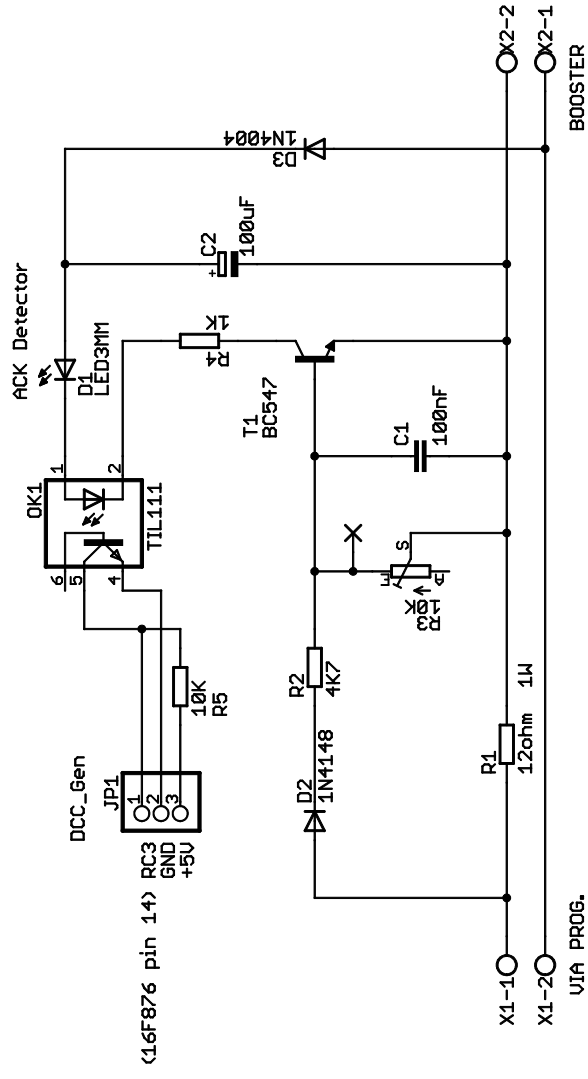
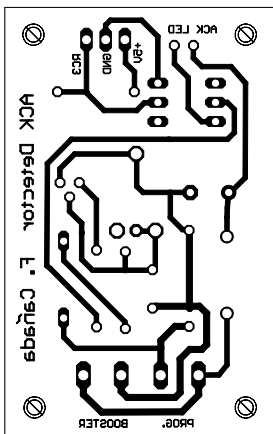


DCC_Gen v.2C Partlist

Part	Value	Device
B1	B40C1500	punte diodos / rectifier
C1	1uF	condensadores / capacitors
C2	1uF	
C3	1uF	
C4	1uF	
C5	10uF	
C6	22pF	
C7	22pF	
C8	470uF	
C9	47uF	
C10	100nF	
C11	100nF	
C12	10nF	
D1	1N4148	dosdos / diode
D2	1N4148	
D3	1N4148	
D4	1N4148	
D5	LED3MM	LED
IC1	PIC 16F876	
IC2	MAX232	
IC3	74LS04N	
IC4	7805	regulador de voltage / voltage regulator
IR1	IS1U60	receptor infrarojos / IR receiver
JP1	PINHD-1X14	conector pin / pinhead
JP2	PINHD-1X8	
JP3	PINHD-1X3	
JP4	PINHD-1X6	
JP6	PINHD-1X3	
JP7	PINHD-1X3	
JP5	DB9-FEMALE	conector DB9 hembra
Q1	8MHz	crystal / crystal
R1	1K	resistencias / resistor
R2	5K6	
R3	5K6	
R4	470R	
R5	10K	
R6	10K	
R7	56K	
R8	1K2	
R9	10K	potenciometro / potentiometer
S1		pulsador / switch
S2		
X2		bornas / conector
X3		

F.M. Cañada
<http://www.fut.es/~fmco>





ACK Detector Partlist

Part	Value	Device
C1	100nF	condensadores / capacitors1
C2	100uF	
D1	LED3MM	LED
D2	1N4148	diodos / diode
D3	1N4004	
JP1	PINHD-1X3	conector pin / pinhead
OK1	TIL111	optoacoplador / optocoupler
R1	12ohm 1W	resistencias / resistor
R2	4K7	
R4	1K	
R5	10K	
R3	10K	potenciometro ajustable / trimmer
T1	BC547	transistor
X1		bornas / conector
X2		

F.M.Cañada
<http://www.fut.es/~fmco>