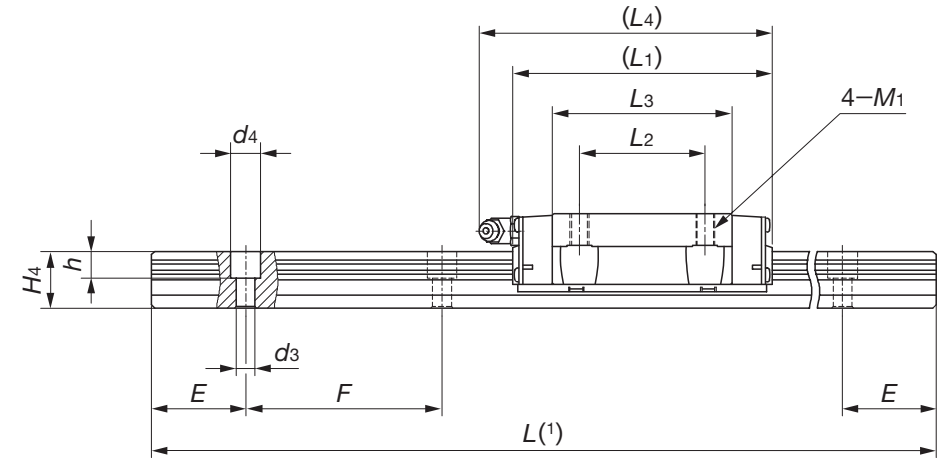
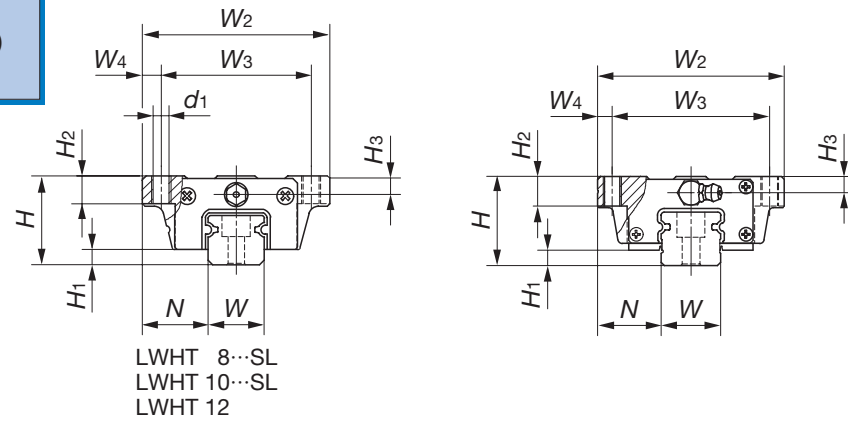
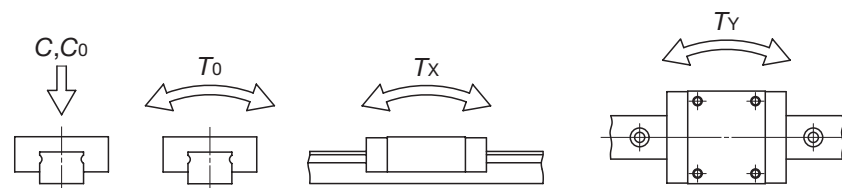


Flange type mounted from top
LWHT ...B
LWHTG
LWHT ...SL(Stainless steel made)
LWHT ...M(Ultra sealed type)



Model number	Interchangeable	Mass (Ref.)		Dimensions of assembly mm			Dimensions of slide unit mm							
		Slide unit kg	Track rail kg/m	H	H ₁	N	W ₂	W ₃	W ₄	L ₁	L ₂	L ₃	L ₄	d ₁ ⁽³⁾
LWHT 8...SL	☆	0.015	0.32	10	2.1	8	24	19	2.5	24	10	15.3	—	1.9
LWHT 10...SL	☆	0.032	0.47	12	2.4	10	30	24	3	32	12	21.4	—	2.6
LWHT 12	☆	0.11	0.86	19	3.2	14	40	32	4	46	15	31.6	50	3.4
LWHT 12...SL	☆													
LWHT 15...B	☆	0.22	1.47	24	4.5	16	47	38	4.5	66	30	44.6	69	—
LWHT 15...SL	☆													
LWHT 15...M														
LWHT 20...B	☆	0.48	2.56	30	5	21.5	63	53	5	83	40	57.2	95	—
LWHT 20...SL	☆													
LWHT 20...M														
LWHTG 20	☆	0.71								112		86	124	
LWHT 25...B	☆	0.70	3.50	36	6.5	23.5	70	57	6.5	95	45	64.7	106	—
LWHT 25...SL	☆													
LWHT 25...M														
LWHTG 25	☆	0.93								118		87.4	129	

Note(1) : Track rail lengths are shown in Table 11.1 on page B-88, Table 11.2 on page B-89 and Table 11.3 on page B-90.
 (2) : The directions of basic dynamic load rating (C), basic static load rating (C₀) and static moment rating (T₀, T_x, T_y) are shown in the sketches below. The upper values in the T_x and T_y columns apply to one slide unit, and the lower values apply to two slide units in close contact.
 (3) : LWHT8...SL, LWHT10...SL and LWHT12...SL can also be mounted from the lower side.
 Remark 1 : The mark ☆ indicates that interchangeable specification products are available.
 2 : The appended track rail mounting bolts are hexagon socket head bolts of JIS B 1176 or equivalent.
 For stainless steel type Linear Way H, stainless steel bolts are appended.
 3 : For grease nipple and oil hole specifications, see page 97.
 4 : LWHT8...SL and LWHT10...SL are provided with an oil hole.



M ₁	H ₂	H ₃	Dimensions of track rail mm							Mounting bolt for track rail mm Bolt size x length	Basic dynamic load rating ⁽²⁾ C N	Basic static load rating ⁽²⁾ C ₀ N	Static moment rating ⁽²⁾		
			W	H ₄	d ₃	d ₄	h	E	F				T ₀ N·m	T _x N·m	T _y N·m
M2.3	3.5	2	8	6	2.4	4.2	2.3	10	20	M2×8	1 510	2 120	8.8	5.5 32.0	4.7 26.9
M3	4.5	2.5	10	7	3.5	6	3.5	12.5	25	M3×8	2 640	3 700	19.2	13.3 73.8	11.1 61.9
M4	6	4	12	10.5	3.5	6	4.5	20	40	M3×12	6 260	8 330	51.6	44.7 237	37.5 199
M5	7	4.5	15	15	4.5	8	6	30	60	M4×16	11 600	13 400	112	95.6 556	95.6 556
M6	10	5.5	20	18	6	9.5	8.5	30	60	M5×18	18 100	21 100	232	195 1 090	195 1 090
M8	10	6.5	23	22	7	11	9	30	60	M6×22	25 200	28 800	362	421 2 140	421 2 140
											30 800	38 300	483	533 2 740	533 2 740

Example of identification number of assembled set (For details, see "Identification number and specification".)

