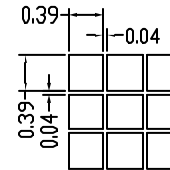
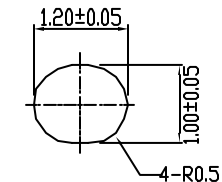


PIN	SYMBOL	PIN	SYMBOL
1	NC	11	C3+
2	V0	12	VDUT
3	V4	13	VSS
4	V3	14	VDD
5	V2	15	SI
6	V1	16	SCL
7	C2-	17	RS
8	C2+	18	/RES
9	C1+	19	/CS1
10	C1-	20	NC

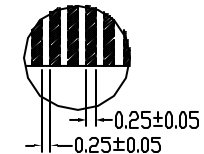
DETAIL A:



DETAIL B:



DETAIL C:



NOTES:

1. DISPLAY TYPE: STN or FSTN
2. VIEWING DIRECTION: 6:00 or 12:00
3. POLARIZER MODE: REFLECTIVE or TRANSFLECTIVE
4. LOGIC VOLTAGE: 3.0V
5. LCD OPERATING VOLTAGE: 9.0V
6. DRIVE METHOD: 1/65 DUTY 1/9 BIAS
7. OPERATING TEMP.: NORMAL or WIDE
8. STORAGE TEMP.: NORMAL or WIDE
9. CONTROLLER: S6B0724A01-B0CY
10. BACKLIGHT: NONE or LED
11. CONNECTOR: FPC
12. UNMARKED TOLERANCES: ±0.3



TIAN-MA MICROELECTRONICS CO.

6/F., CASTIC Building, Shennan Road, Central, Shenzhen, China

DRAWN BY:	TITLE: TM12864N series	
CHECKED BY:	DWG NO: G-1	
APPROVED BY:	DWG NAME: TM12864NCGG-1	UNIT: mm
CONFIRMED BY:	SHEET NO: 01	OF