

# HOW TO DELETE THE SYSTEM PASSWORD

*on*

## TOSHIBA NOTEBOOK, DESKTOP, AND SERVER SYSTEMS

	①	②	③	④	⑤
Libretto 50, 70, 100, 110	✓				
Portégé 610, 620, 650, 660, 2000, 2010, 3010, 3020, 3110, 3140, 3440	✓				
Portégé 3480, 3490, 3500, 4000, 4010, 7000, 7010, 7020, 7140	✓				
Portégé 7200, 7200CTe, 7220CTe	✓				
Portégé A100, M100, M200, R100, Qosmio F10, G10		✓			
Qosmio E10	✓				
Satellite 100, 110, 200, 220, 300, 310, 320, 330, 1400, 1410, 1550, 1800	✓				
Satellite <a href="#">1000</a> , <a href="#">1100</a> , <a href="#">1110</a> , <a href="#">1130</a> , <a href="#">1200</a> , <a href="#">1605</a> , <a href="#">1625</a> , <a href="#">1675</a> , <a href="#">1695</a> , 1715, 1730					✓
Satellite <a href="#">1750</a> , <a href="#">1905</a> , <a href="#">1955</a> , <a href="#">2430</a> , <a href="#">3000</a> , <a href="#">A30</a> , <a href="#">A70</a> , <a href="#">M30X</a> , <a href="#">P10</a> , <a href="#">P25</a>					✓
Satellite 2060, 2100, 2140, 2180, 2210, 2230, 2250, 2400, 2410, 2450	✓				
Satellite 2500, 2510, 2520, 2530, 2540, 2550, 2590, 2610, 2650, 2670	✓				
Satellite 2710, 2750, 2770, 2800, 4000, 4010, 4020, 4030, 4060, 4070	✓				
Satellite 4080, 4090, 4100, 5000, 5100, 5200, A10, A20, A40	✓				
Satellite M30		✓			
Satellite Pro 400, 410, 420, 430, 440, 460, 470, 480, 490, 4220, 4260, 4270	✓				
Satellite Pro 4280, 4290, 4310, 4320, 4330, 4340, 4360, 4380, 4600, 6000, 6100	✓				
Satellite Pro M10		✓			
Tecra 500, 510, 520, 530, 540, 550, 700, 710, 720, 730, 730X, 740	✓				
Tecra 750, 780, 8000, 8100, 8200, 9000, 9100, A1, A2	✓				
TE2000, TE2100	✓				
Tecra M1, M2, M2V		✓			
T100, T200, T1800, T1850, T1900, T1910, T1950, T1960, T2100	✓				
T2130, T2150, T2400, T2450, T3300, T3400, T3600, T4400, T6400	✓				
T4500, T4600, T4700, T4800, T4850, T4900, T6600			✓		
Equium, Infinia				✓	
Magnia, M500, M500D Server				✓	
Toshiba V3100, 3200, V3300 Value-Priced Desktop				✓	

- ① Use the **parallel port wraparound connector** (P/N: TTW-9100) on the parallel printer port. Some models require either an I/O bar (ships with some models) or a port replicator (sold separately) to provide a parallel port. The Portege 2xxx, 35xx, Qosmio E1x, Satellite 5xxx require Printer PC Card (P000293630) and PC Card Cable (P000293640) to provide a parallel port.
  - ② Challenge code method. Contact Toshiba ATS for instructions.
  - ③ Password deletion software is required. Ship computer to Toshiba Manufacturing Repair Center (MRC) or Premier ASP
  - ④ Reset via jumper setting on motherboard. See maintenance manual for location and setting.
  - ⑤ Reset via shorting jumper pad (J1 - Satellite 100x, 110x, 113x, 1200, 16xx, 190x, 243x, 300x, A7x, M3xX, P1x and P25 /J2 – Satellite 111x, 195x/J7 – Satellite A3x / J9 - Satellite 17xx ) on the system board for at least five seconds with system powered off and main battery and AC adapter disconnected. This procedure will also reset the CMOS Setup values. The jumper pad is located beneath the memory cover. With the exception of the Satellite 110x, the expansion memory may need to be removed for access to the jumper pad. On the Satellite 110x, the jumper pad is to the right of the modem, just outside the memory expansion slot. The modem harness, which runs along side the memory expansion slot, will need to be moved out of the way to view jumper pad.
- See the Toshiba Service and Support website for Support Bulletins detailing password deletion instructions for newer models: <http://support.toshiba.com>

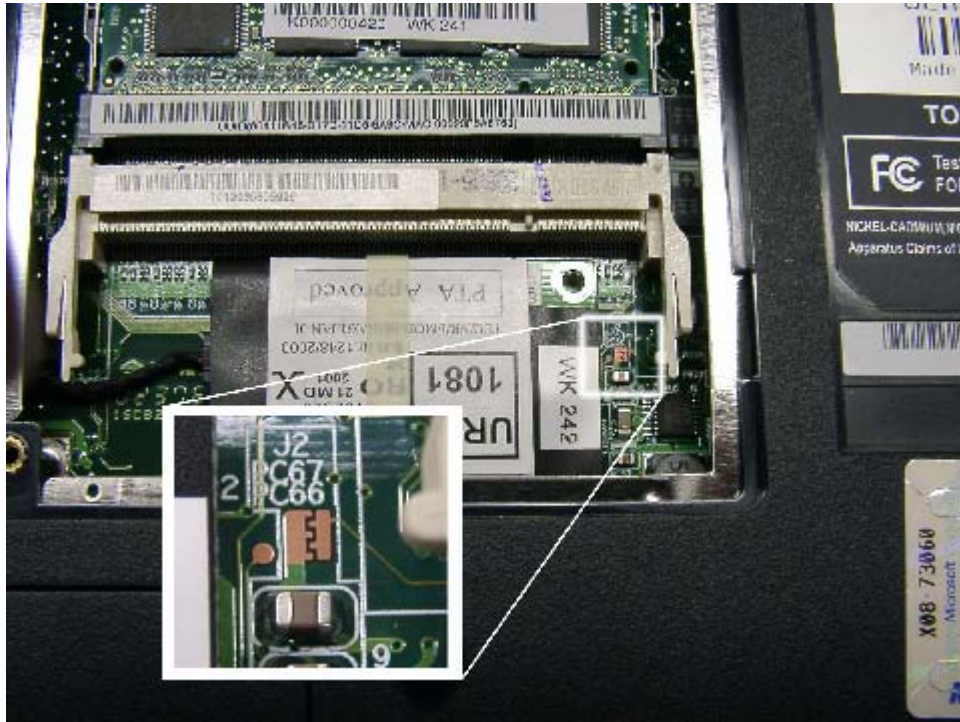
### Satellite 1000/1005 – J1



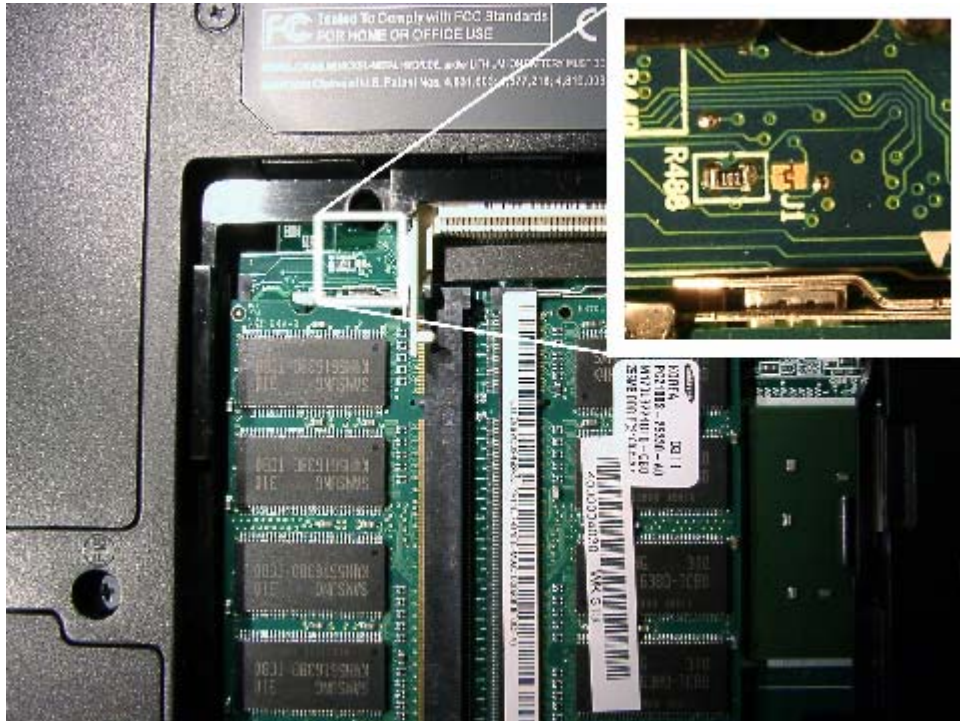
### Satellite 1100/1105 – J1



## Satellite 1110/1115 – J2



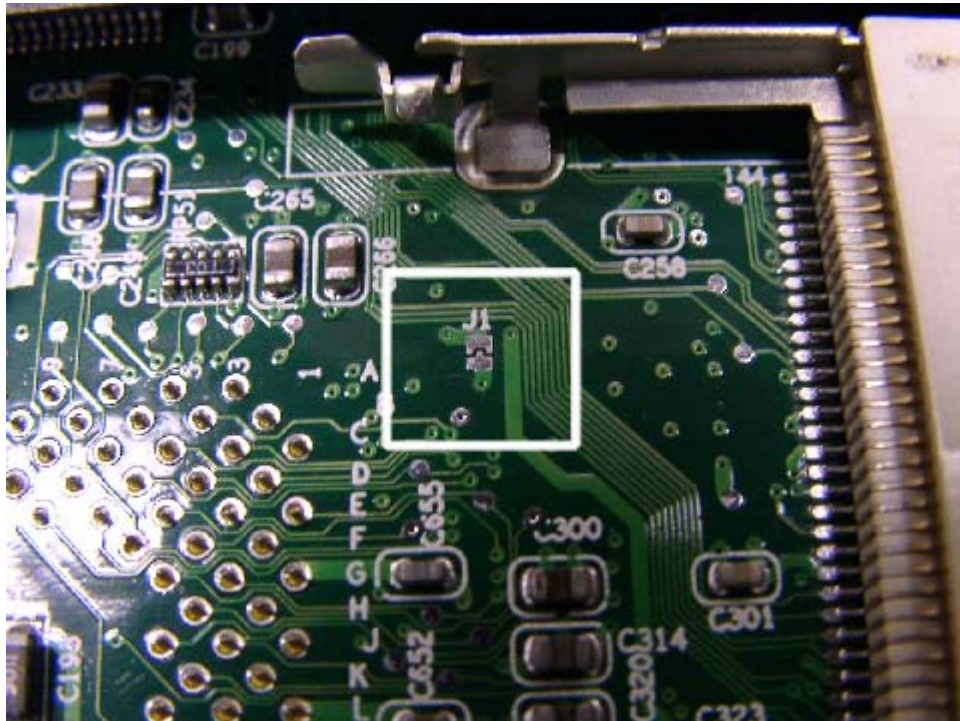
## Satellite 1130/1135 – J1



Satellite 1200 – J1



Satellite 1605/1625 – J1



### Satellite 1675/1695 – J1



### Satellite 1900/1905 – J1



### Satellite 1950/1955 – J2



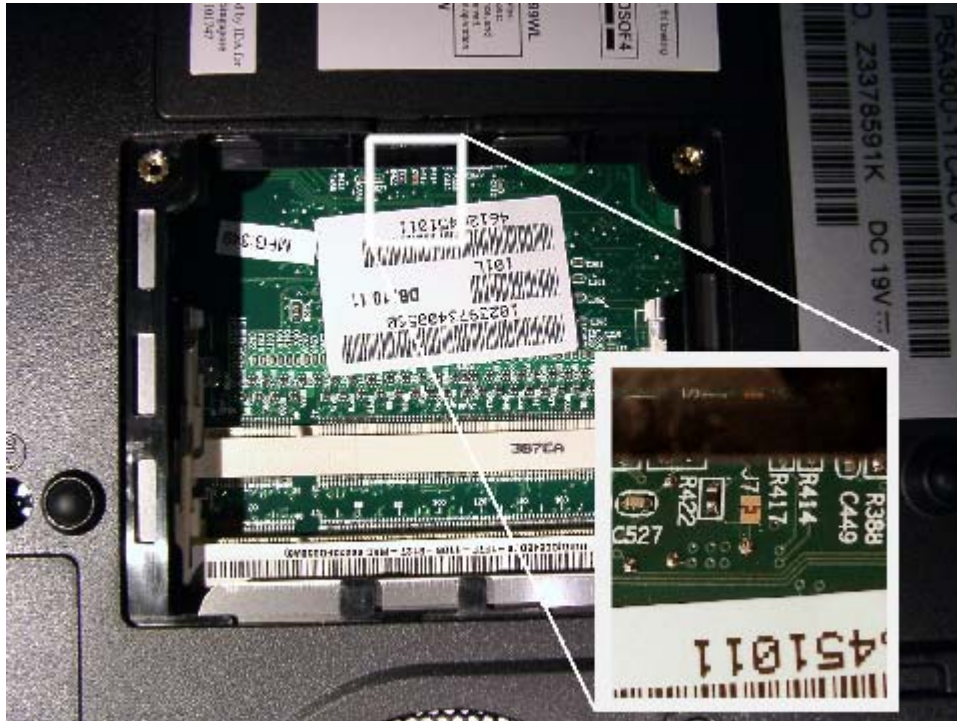
### Satellite 2430/2435 – J1



Satellite 3000/3005 – J1



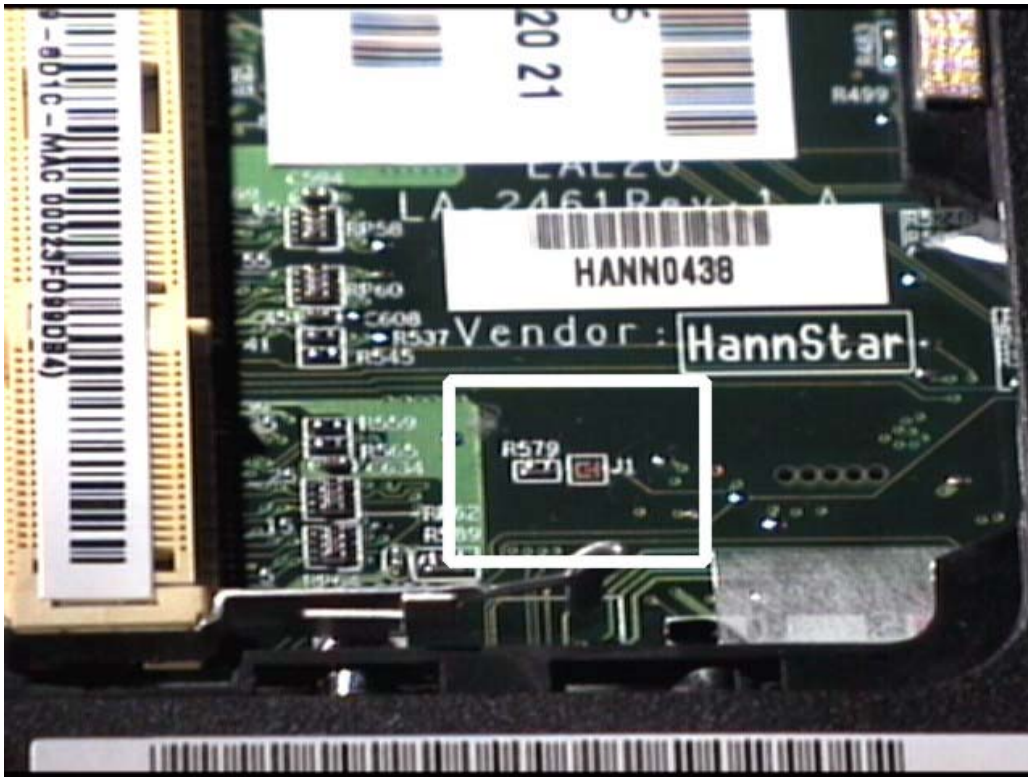
Satellite A30/A35 J7



Satellite A70/A75 – J1

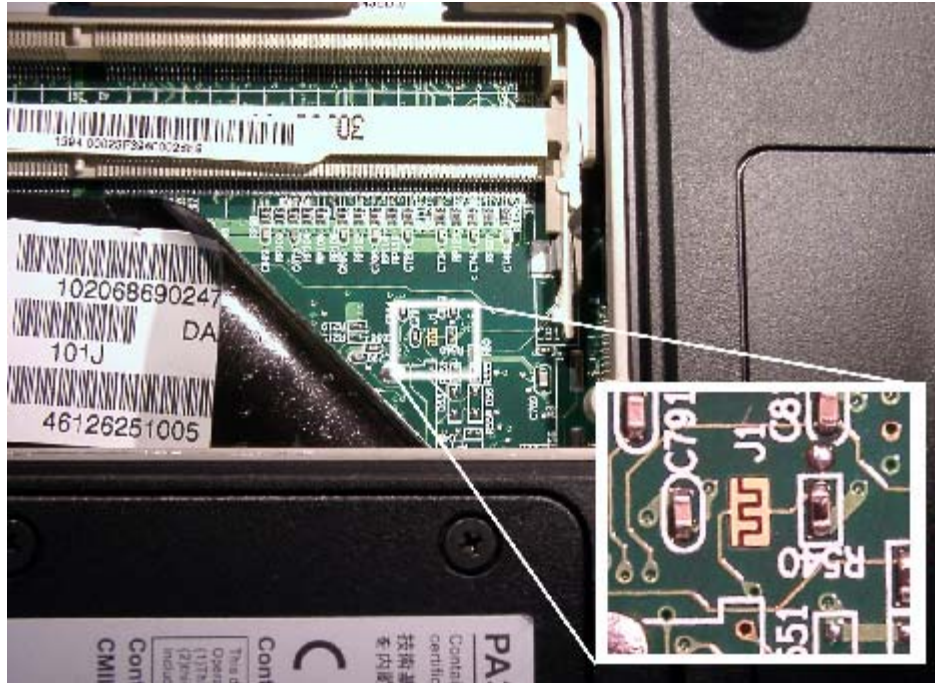


Satellite M30X/M35X – J1





### Satellite P10/P15 – J1



### Satellite P20/P25 – J1

