



Service Manual

Washing machine

Toploader

AWT 2256

Model Version		Page
AWT 2256 8561 225 10163		
	Technical data	2 - 3
	Spare part list	4
	Exploded view	5 - 6
	Wiring diagram	7
	Circuit diagram	8
	Program diagram	9



Technical data

Dimensions

Height	85.0	cm
Width	40.0	cm
Depth	60.0	cm

Weight

Net weight	~61	kg
With packing	~64	kg

Main connection

Voltage	230	V ± 10%
Frequency	50	Hz
Power consumption	~2.3	kW
Fuse rating	10	A

Drum

Volume	42	l
Wash spin	54	rpm
Speed spinning max.	500	rpm

Capacity of dry laundry

Cotton/coloured laundry	5/4.5	kg
Cotton rapid	3	kg
Easy care	2.5	kg
Easy care rapid	1.5	kg
Delicate	1.5	kg
Wool	1	kg

Pressostat for washing-machine

Level 1 - PRL - washing, anti foam

Switching point	65 ± 5	mm Wc
Reset	35 ± 5	mm Wc

Overflow - PRS

Switching point	300 ± 20	mm Wc
-----------------	----------	-------

Water column drum

Level 1 - PRL - washing

Switching point	50 ± 5	mm
-----------------	--------	----

Overflow

Switching point	285 ± 20	mm
-----------------	----------	----

Nominal current

Contacts:

11 - 12	4 (4)	A
11 - 14	4 (4)	A
21 - 12	4 (4)	A
21 - 24	16 (4)	A
21 - 26	1 (1)	A

Contacts system:

11 - 12 - 14	jump contacts
21 - 22 - 24	jump contacts
21 - 26	slow action contacts

Door lock

Lock time (0 - 85 °C)	<5"
Unlock time after 30" on	110" ± 50"
Nominal voltage	250 V
Nominal current contacts:	
4 - 5	16 (4) A

Heating element

Kind of heating	Tubular heating element
Nominal voltage	230 V
Nominal power	2050 W
Heat conductor resistance	25.8 Ω ± 5%
Working temperature max.	120 °C

Water inlet valve

Water temperature max.	90 °C
Rated flow (>1 bar)	8 l/min.
Pressure range	0.2 - 10 bar
Nominal voltage	220 - 240 V
Frequency	50 Hz
Starting voltage	170 V
Nominal current	40 mA
Nominal power	8.8 VA
Nominal resistor (20 °C)	3.8 kΩ ± 10%

Drain pump (synchronous)

Nominal voltage	230 V
Nominal current	0.3 A
Nominal consumption	34 W
Frequency	50 Hz
Resistor (coil)	164 Ω ± 7%
Motor protection	no
Capacity (1.25m height)	14 l/min

Technical data

Program timer

Type	Electromechanical		
Fab.	EC 4839 (Timer A1S)		
Nominal voltage	230	V	
Frequency	50	Hz	
Total positions	60		
Pre wash	pos.	01	
Main wash	pos.	06	
Rinse	pos.	21	
Spin	pos.	33/58	
Stop	pos.	37/60	
Ambient temperature	to 70	°C	
Storage temperature	to 85	°C	

Motor

Type	2/16		
	i = 1:6.3		
Pulley diameter	32.4	mm	
Nominal voltage	230	V	
Frequency	50	Hz	
Nominal current:			
Washing	1.6	A	
Spinning	3.0	A	

Capacitor

Motor capacitor	16	μ F	
-----------------	----	-----	--

Radio interference supression

Nominal voltage	230	V	
Nominal capacity	470 nF X1 + 2 x 22 nF Y		
Nominal inductance	2 x 0.5	mH	
Nominal resistance	680	kΩ	

Thermostats - optional

Thermostat bi-metal 60°C

TH60

Nominal voltage	230	V	
Nominal current	10	A	
OFF	55 ± 3	°C	
ON	40 ± 4	°C	

Thermostat bi-metal 35°C

TH35

Contact	normally open (NO)		
OFF	35 ± 4	°C	
ON	27 ± 3	°C	

Thermostat bi-metal 80°C

TH80

Nominal voltage	230	V	
Nominal current	10	A	
OFF	80 ± 3	°C	
ON	60 ± 4	°C	

Switch mains

Push button on/off	SM
--------------------	----

Push button switch

Half load	SHL
Intensive wash	SWI

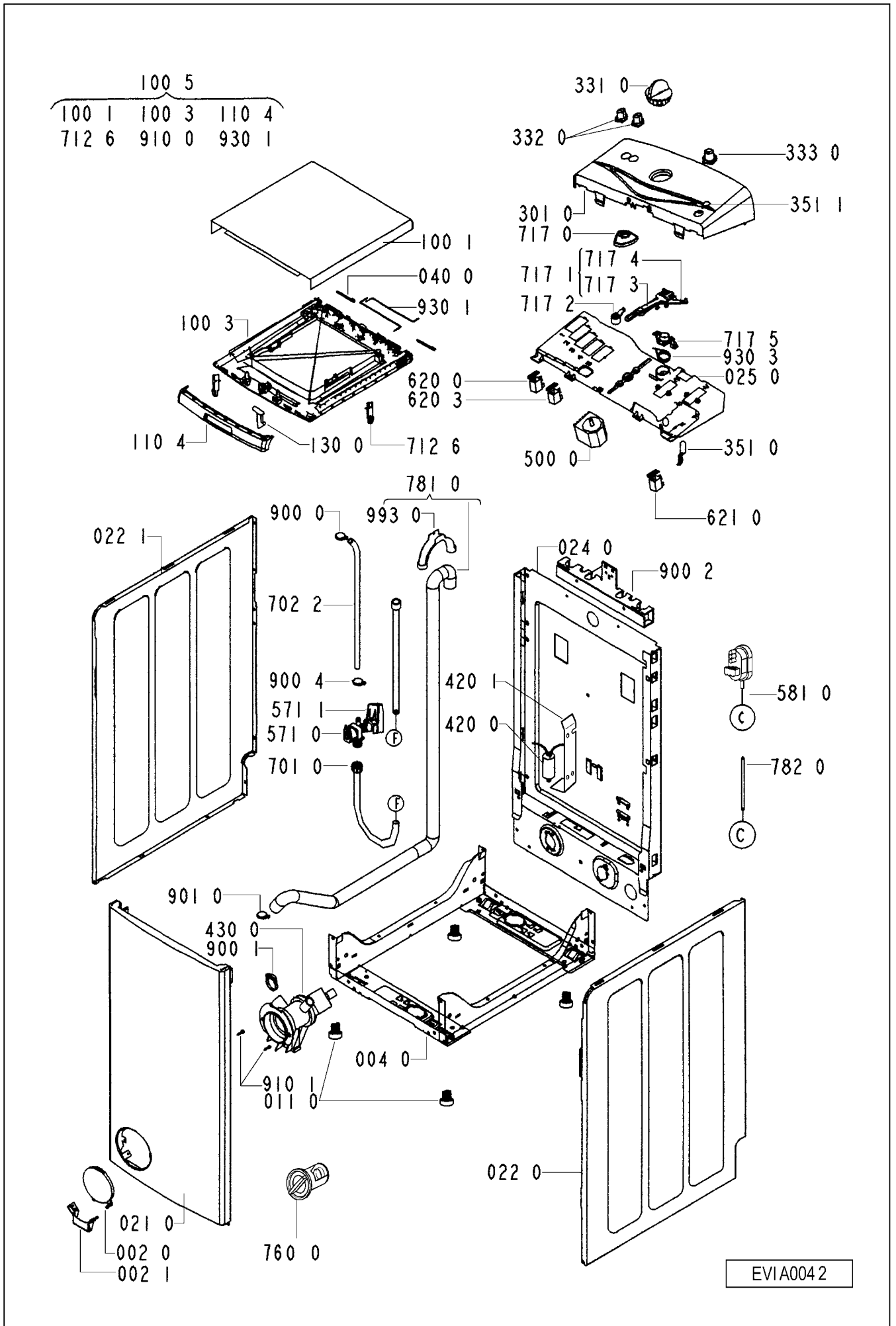
Spare part list

Model AWT 2256
Service No. 856122510163
Version 856122510163

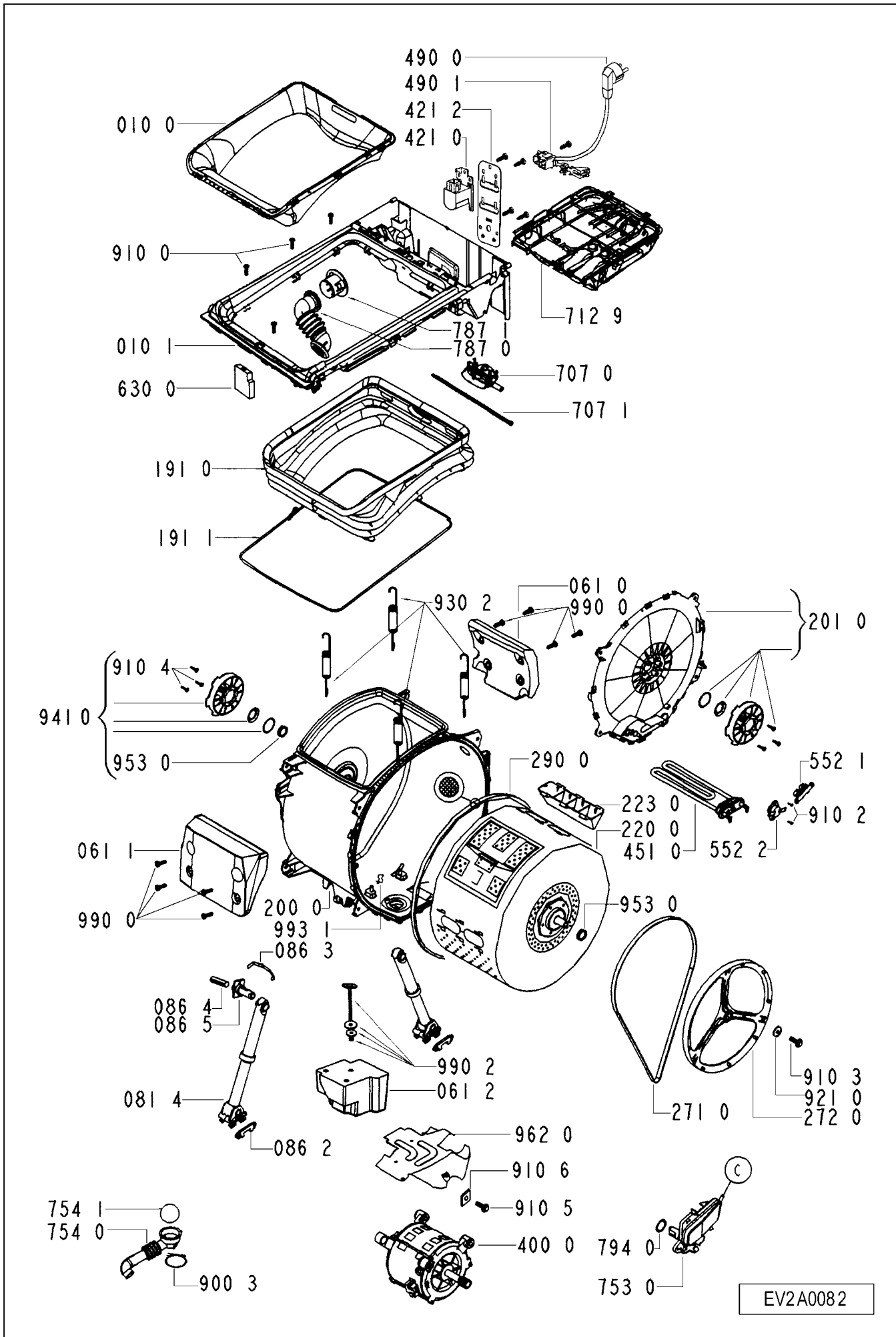
Pos. No.	12NC Code	Description
002 0	4812 459 38057	Flap round GW
002 1	4812 459 38058	Hinge flap GW
004 0	4812 440 19625	Drip tray assy
010 0	4812 459 48175	Door frame inner GW
010 1	4812 440 10836	Frame Top RFI + nozzle box GW
011 0	4819 462 48472	Foot
021 0	4812 440 10838	Front,panel WH GW
022 0	4812 440 10839	Side panel right GW
022 1	4812 440 10841	Side panel left GW
024 0	4812 440 19631	Rear panel
025 0	4812 440 19632	Support
040 0	4812 417 19155	Hinge bolt lid GW
061 0	4812 466 88489	Counter weight
061 1	4812 466 88491	Counter weight front
061 2	4812 466 88492	Counter weight bottom
081 4	4812 529 18043	Shock absorber
086 2	4812 401 18412	Stopper
086 3	4812 529 18044	Clamp absorber
086 4	4812 529 18045	Pin f. Shock absorber
086 5	4812 529 18046	Shaft f. absorber
100 1	4812 440 10842	Lid outer GW
100 3	4812 440 10843	Lid inner GW
100 5	4812 440 10845	Lid assembly WH GW
110 4	4812 498 18249	Handle cpl. WH GW
130 0	4812 417 19193	Door latch GW
191 0	4812 466 68596	Door bellow
191 1	4812 492 98014	Strap f. bellow
200 0	4812 418 18242	Tub 4fix points
201 0	4812 440 19644	Cover cpl.
220 0	4812 418 18243	Drum
223 0	4819 418 49713	Drum lifter
271 0	4812 358 18161	Belt
272 0	4812 528 88082	Pulley 268 mm
290 0	4812 532 68078	Gasket
301 0	4812 452 13282	Control panel AWT 2256 GW
331 0	4812 412 58979	Knob Timer WH GW
332 0	4812 410 29011	Button Options WH GW
333 0	4812 410 29022	Button on/off WH GW
351 0	4812 124 98001	Lamp mains
351 1	4812 124 18001	Cover pilot lamp
400 0	4812 361 58145	Motor 2/16
420 0	4819 121 18314	Capacitor
420 1	4812 121 18238	Cover f. capacitor
421 0	4812 121 18217	Interf.filter
421 2	4812 404 38679	Holder RFI
430 0	4812 360 18472	Pump,draining
451 0	4812 259 28701	Heating element without hole
490 0	4819 321 18136	Cable,mains 2m SA
490 1	4812 321 28367	Strain relief
500 0	4812 282 18682	Timer EC 4839 (A1S)
552 1	4812 282 18684	Thermostat 35-60 °C
552 2	4812 282 18683	Thermostat 80 °C
571 0	4812 281 28393	Valve,magnet
571 1	4812 281 18049	Cover f. valve
581 0	4812 271 28502	Pressostat

Pos. No.	12NC Code	Description
620 0	4819 410 29005	Switch Options NC
620 3	4819 410 29044	Switch Options NO
621 0	4812 276 18276	Switch ON/OFF
630 0	4812 271 38373	Door lock hybrid
701 0	4819 530 29034	Hose, inlet
702 2	4812 530 28871	Hose VALVE-DISPENSER
707 0	4812 526 48122	Nozzle box cold cpl.
707 1	4812 526 48049	Clamp f. nozzle box
712 6	4812 418 68164	Clip SOAP DISPENSER
712 9	4812 418 68289	Soap dispenser cpl. 4 ch. GW
717 0	4812 323 18179	Cam A1/A2
717 1	4812 323 18183	Lever ass.plastic
717 2	4812 323 18021	Lever adjustment (metal)
717 3	4812 323 18181	Lever adjustment
717 4	4812 323 18182	Lever
717 5	4812 323 18025	Support lever metal
753 0	4812 418 68187	Chamber,air
754 0	4812 530 28938	Drainhose
754 1	4812 530 28832	Lock eco
760 0	4812 480 58089	Filter set pump
781 0	4812 530 28953	Hose,draining
782 0	4812 530 28941	Hose Pressostat
787 0	4812 530 28942	Hose Air Exhaust
787 1	4812 530 28943	Hose Cover
794 0	4812 530 58098	Gasket Airtrap
900 0	4812 290 68157	Strap SNP 8
900 1	4812 401 18431	Clamp to pump
900 2	4812 401 18461	Support cable/hose
900 3	4819 401 18529	Clamp,hose
900 4	4819 401 18362	Strap SNP 8
901 0	4812 401 18462	Clamp,hose drain hose
910 0	4812 502 48347	Screw,selftap 3,5x14SS
910 1	4812 502 38151	Screw 4x14
910 2	4819 502 38288	Screw PLASGOB SP T45
910 3	4812 502 18404	Screw
910 4	4812 502 18423	Screw PT 7x15
910 5	4812 502 18401	Screw M8X 35
910 6	4812 502 18399	Nut Push in M 8
921 0	4812 400 18047	Washer
930 1	4812 492 48171	Torsions spring
930 2	4812 492 48162	Spring
930 3	4812 323 18019	Spring f. lever
941 0	4812 310 18578	Bearing Kit
953 0	4812 325 68001	Shaft seal
962 0	4812 440 19645	Cover f. Motor
990 0	4812 310 18504	Fixing mat.set front counter
990 2	4812 310 18506	Fixing mat.set bottom
993 0	4819 530 29028	Bow
993 1	4812 290 18025	Clamp heatingelement

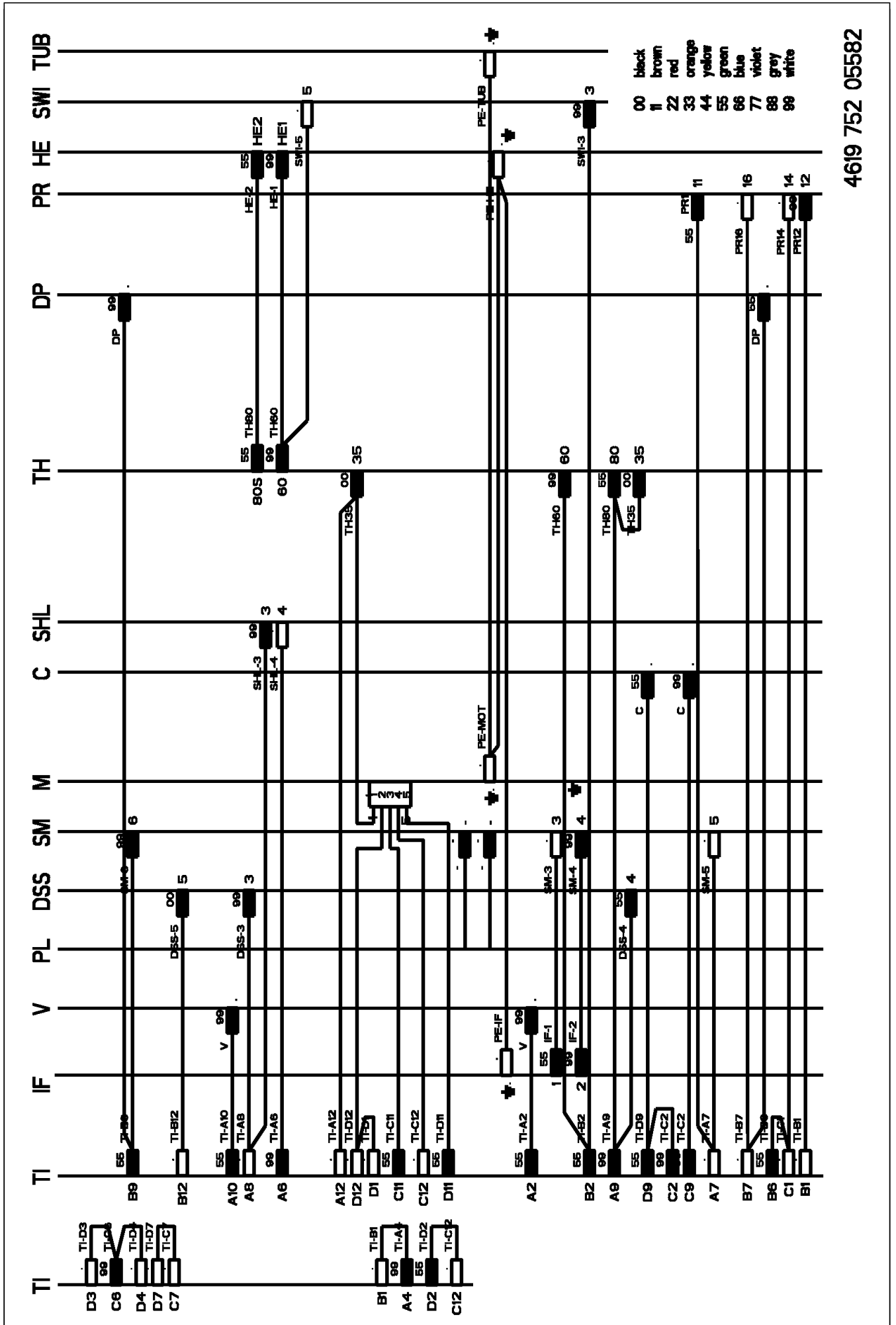
Exploded view



Exploded view

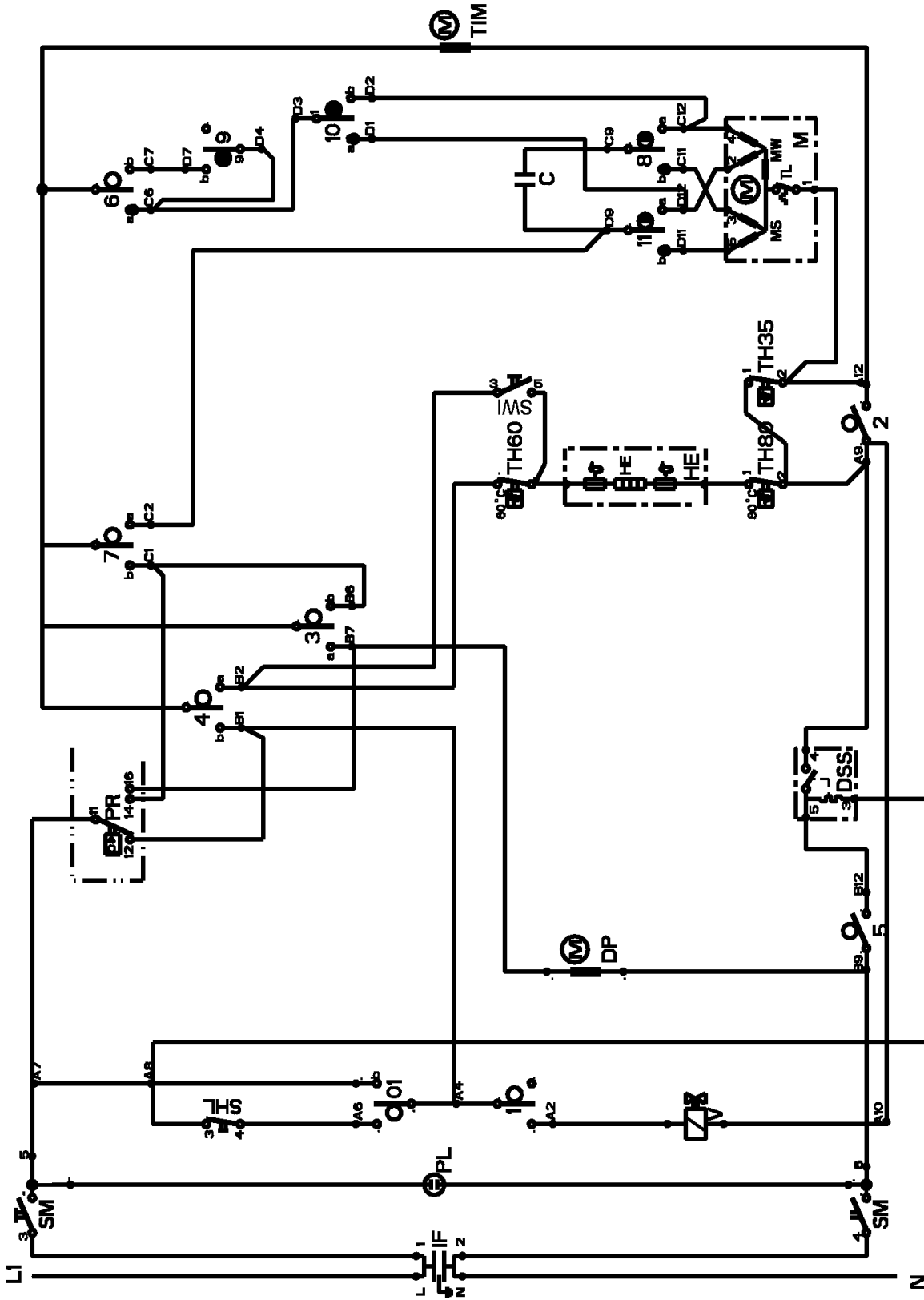


Wiring diagram



4619 752 05582

Circuit diagram



- C capacitor
- DP drain pump
- DSS door safety switch
- HE heating element
- IC interference capacitor
- M motor drive
- PL pilot lamp
- PR pressostat
- SHL switch, half load
- SM switch, mains
- SMT switch 95° wash intensive
- TH thermostat, fix
- TI timer
- TIM timer motor
- V valve

4619 752 05582

Program diagram

