

WALL MOUNTING JUNCTION BOXES

JUNCTION BOXES WITH STEPPED GLANDS	Page 78
IP44-IP55 With standard stepped glands	
SMOOTH SIDED WATERTIGHT BOXES	Page 79
IP56 With standard/high lid - solid/transparent lid	
WATERTIGHT BOXES WITH 1/4 TURN SCREWS	Page 80
IP55 - IP56 With standard or cable direct inlet - grey or grey/red	
V0 SELF-EXTINGUISHIN JUNCTION BOXES	Page 82
IP55 With stepped glands - IP56 smooth sided	
SMOOTH SIDED WATERTIGHT BOXES POLYCARBONATE	Page 82
IP56 Heat resistance up to 120° C - heavy duty	
ALUMINIUM WALL MOUNTING JUNCTION BOXES	Page 83
IP66 Smooth sides watering boxes	
WALL MOUNTING BOXES FOR ELECTRICAL DEVICES	Page 84
Suitable for electrical devices Magic or GW system - with devices	



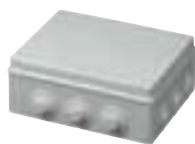
MAIN CHARACTERISTICS

- Junction and derivation box systems - wall mounting.
- Peculiar bottom guides for DIN rail, terminal block and plate installation.
- Dimension C7 - C8 - C9 - C10 with nylon screws, C8 - C9 - C10 with hinged lid.
- Material wall mounting boxes: made of ABS technopolymer with high resistance to UV rays.
- Standard colours: grey RAL 7035.
- Protection degree from IP40 up to IP56, with plastic caps for the holes of the fixing screws in the back to gain double insulation.
- Shock resistance: IK 08 (up to 6j).
- Resistance to abnormal heat: up to 650°C (up to 960° A type) Glow Wire Test, IEC 695-2-1 standard.
- Made in compliance with EN 60670-1:2005, EN 60670-22:2006 standards.

THERMORESISTANT WALL MOUNTING JUNCTION BOXES



JUNCTION BOX WITH STEPPED GLANDS - SNAPPED LID - IP44				400 SERIES	
Article		Description- internal dimensions (BxHxD)	UM	Packaging	
EC400C1		Junction box with snapped lid dim. Ø 65x35 mm	PCS	5/120	
EC400C2		Junction box with snapped lid dim. Ø 80x40 mm	PCS	5/150	
EC400C3		Junction box with snapped lid dim. 80x80x40 mm	PCS	5/160	



JUNCTION BOX WITH STEPPED GLANDS - SCREWED LID - IP55				400 SERIES	
Article		Description- internal dimensions (BxHxD)	UM	Packaging	
EC400C4		Junction box with screwed lid dim. 100x100x50 mm	PCS	1/90	
EC400C4R		Junction box with screwed lid dim. 120x80x50 mm	PCS	1/90	
EC400C5		Junction box with screwed lid dim. 150x110x70 mm	PCS	1/45	
EC400C6		Junction box with screwed lid dim. 190x140x70 mm	PCS	1/25	
EC400C7		Junction box with screwed lid dim. 240x190x90 mm	PCS	1/14	
EC400C8		Junction box with screwed lid dim. 300x220x120 mm	PCS	1/6	
EC400C9		Junction box with screwed lid dim. 380x300x120 mm	PCS	1/4	
EC400C10		Junction box with screwed lid dim. 460x380x120 mm	PCS	1/4	

THERMORESISTANT WALL MOUNTING JUNCTION BOXES



SMOOTH SIDED JUNCTION BOX - SCREWED LID - IP56			410 SERIES	
Article		Description- internal dimensions (BxHxD)	UM	Packaging
EC410C4		Junction box with screwed lid dim. 100x100x50 mm	PCS	1/100
EC410C4R		Junction box with screwed lid dim. 120x80x50 mm	PCS	1/100
EC410C5		Junction box with screwed lid dim. 150x110x70 mm	PCS	1/42
EC410C6		Junction box with screwed lid dim. 190x140x70 mm	PCS	1/24
EC410C7		Junction box with screwed lid dim. 240x190x90 mm	PCS	1/16
EC410C8		Junction box with screwed lid dim. 300x220x120 mm	PCS	1/6
EC410C9		Junction box with screwed lid dim. 380x300x120 mm	PCS	1/4
EC410C10		Junction box with screwed lid dim. 460x380x120 mm	PCS	1/4



SMOOTH SIDED JUNCTION BOX - SCREWED TRANSPARENT LID - IP56			420 SERIES	
Article		Description- internal dimensions (BxHxD)	UM	Packaging
EC420C5		Junction box with screwed lid dim. 150x110x70 mm	PCS	1/42
EC420C6		Junction box with screwed lid dim. 190x140x70 mm	PCS	1/24
EC420C7		Junction box with screwed lid dim. 240x190x90 mm	PCS	1/16
EC420C8		Junction box with screwed lid dim. 300x220x120 mm	PCS	1/6
EC420C9		Junction box with screwed lid dim. 380x300x120 mm	PCS	1/4
EC420C10		Junction box with screwed lid dim. 460x380x120 mm	PCS	1/4



SMOOTH SIDED JUNCTION BOX - SCREWED HIGH LID - IP56			430 SERIES	
Article		Description- internal dimensions (BxHxD)	UM	Packaging
EC430C5		Junction box with screwed lid dim. 150x110x140 mm	PCS	1/18
EC430C6		Junction box with screwed lid dim. 190x140x140 mm	PCS	1/16
EC430C7		Junction box with screwed lid dim. 240x190x160 mm	PCS	1/8
EC430C8		Junction box with screwed lid dim. 300x220x180 mm	PCS	1/4
EC430C9		Junction box with screwed lid dim. 380x300x180 mm	PCS	1/3



SMOOTH SIDED JUNCTION BOX - SCREWED HIGH TRANSPARENT LID - IP56			440 SERIES	
Article		Description- internal dimensions (BxHxD)	UM	Packaging
EC440C5		Junction box with screwed lid dim. 150x110x140 mm	PCS	1/18
EC440C6		Junction box with screwed lid dim. 190x140x140 mm	PCS	1/16
EC440C7		Junction box with screwed lid dim. 240x190x160 mm	PCS	1/8
EC440C8		Junction box with screwed lid dim. 300x220x180 mm	PCS	1/4
EC440C9		Junction box with screwed lid dim. 380x300x180 mm	PCS	1/3

THERMORESISTANT WALL MOUNTING JUNCTION BOXES



JUNCTION BOX WITH STEPPED GLANDS - 1/4 TURN SCREWS - IP55 405 SERIES

Article	Description- internal dimensions (BxHxD)	UM	Packaging
EC405C4	Junction box with screwed lid 1/4 turn dim. 105x105x55 mm	PCS	1/60
EC405C5	Junction box with screwed lid 1/4 turn dim. 155x110x70 mm	PCS	1/45



JUNCTION BOX WITH CABLE DIRECT INLET - 1/4 TURN SCREWS - IP55 401 SERIES

Article	Description- internal dimensions (BxHxD)	UM	Packaging
EC401C4	Junction box with screwed lid 1/4 turn dim. 105x105x55 mm	PCS	1/60
EC401C5	Junction box with screwed lid 1/4 turn dim. 155x110x70 mm	PCS	1/45



SMOOTH SIDED JUNCTION BOX - 1/4 TURN SCREWS - IP56 415 SERIES

Article	Description- internal dimensions (BxHxD)	UM	Packaging
EC415C4	Junction box with screwed lid 1/4 turn dim. 105x105x55 mm	PCS	1/80
EC415C5	Junction box with screwed lid 1/4 turn dim. 155x110x70 mm	PCS	1/42



PLASTIC STEPPED GLAND 470 SERIES

Article	Description	UM	Packaging
EC47020	Max. diameter hole = 20 mm	PCS	100/800
EC47025	Max. diameter hole = 25 mm	PCS	100/600
EC47032	Max. diameter hole = 32 mm	PCS	100/500
EC47040	Max. diameter hole = 40 mm	PCS	100/300



DIRECT INLET PLASTIC PLAIN GLAND 470 SERIES

Article	Description	UM	Packaging
EC47025S	Max. diameter hole = 25 mm	PCS	100/600



SCREW HEAD CAP FOR DOUBLE INSULATION TFLEX SERIES

Article	Description	UM	Packaging
ECTFLEX13	For boxes C1-C2-C3-C4 type	PCS	100/2000
ECTFLEX18	For boxes C5-C6-C7-C8 type	PCS	100/2000
ECTFLEX25	For boxes C9-C10 type	PCS	100/1500

V0 SELF-EXTINGUISHING WALL MOUNTING JUNCTION BOXES



960° C

JUNCTION BOX WITH STEPPED GLANDS - 1/4 TURN SCREWS - IP55 405A SERIES

Article	Description- internal dimensions (BxHxD)	UM	Packaging
EC405C4A	Junction box with screwed lid 1/4 turn dim. 105x105x55 mm - self-extinguishing	PCS	1/60
EC405C5A	Junction box with screwed lid 1/4 turn dim. 155x110x70 mm - self-extinguishing	PCS	1/45



960° C

JUNCTION BOX WITH CABLE DIRECT INLET - 1/4 TURN SCREWS - IP55 401A SERIES

Article	Description- internal dimensions (BxHxD)	UM	Packaging
EC401C4A	Junction box with screwed lid 1/4 turn dim. 105x105x55 mm - self-extinguishing	PCS	1/60
EC401C5A	Junction box with screwed lid 1/4 turn dim. 155x110x70 mm - self-extinguishing	PCS	1/45



960° C

RED JUNCTION BOX WITH STEPPED GLANDS - 1/4 TURN SCREWS - IP55 406A SERIES

Article	Description- internal dimensions (BxHxD)	UM	Packaging
EC406C4A	Junction box with screwed lid 1/4 turn dim. 105x105x55 mm - self-extinguishing	PCS	1/60
EC406C5A	Junction box with screwed lid 1/4 turn dim. 155x110x70 mm - self-extinguishing	PCS	1/45



960° C

RED JUNCTION BOX WITH CABLE DIRECT INLET - 1/4 TURN SCREWS - IP55 407A SERIES

Article	Description- internal dimensions (BxHxD)	UM	Packaging
EC407C4A	Junction box with screwed lid 1/4 turn dim. 105x105x55 mm - self-extinguishing	PCS	1/60
EC407C5A	Junction box with screwed lid 1/4 turn dim. 155x110x70 mm - self-extinguishing	PCS	1/45



960° C

SMOOTH SIDED JUNCTION BOX - 1/4 TURN SCREWS - IP56 415A SERIES

Article	Description- internal dimensions (BxHxD)	UM	Packaging
EC415C4A	Junction box with screwed lid 1/4 turn dim. 105x105x55 mm - self-extinguishing	PCS	1/80
EC415C5A	Junction box with screwed lid 1/4 turn dim. 155x110x70 mm - self-extinguishing	PCS	1/42



960° C

RED SMOOTH SIDED JUNCTION BOX - 1/4 TURN SCREWS - IP56 416A SERIES

Article	Description- internal dimensions (BxHxD)	UM	Packaging
EC416C4A	Junction box with screwed lid 1/4 turn dim. 105x105x55 mm - self-extinguishing	PCS	1/80
EC416C5A	Junction box with screwed lid 1/4 turn dim. 155x110x70 mm - self-extinguishing	PCS	1/42

WALL MOUNTING JUNCTION BOXES

VO SELF-EXTINGUISHING WALL MOUNTING JUNCTION BOXES



960° C

JUNCTION BOX WITH STEPPED GLANDS - SNAPPED LID - IP44 400A SERIES

Article	Description- internal dimensions (BxHxD)	UM	Packaging
EC400C1A	Junction box with snapped lid dim. Ø 65x35 mm - self-extinguishing	PCS	5/120
EC400C2A	Junction box with snapped lid dim. Ø 80x40 mm - self-extinguishing	PCS	5/150
EC400C3A	Junction box with snapped lid dim. 80x80x40 mm - self-extinguishing	PCS	5/160



960° C

JUNCTION BOX WITH STEPPED GLANDS - SCREWED LID - IP55 400A SERIES

Article	Description- internal dimensions (BxHxD)	UM	Packaging
EC400C4A	Junction box with screwed lid dim. 100x100x50 mm - self-extinguishing	PCS	1/90
EC400C4RA	Junction box with screwed lid dim. 120x80x50 mm - self-extinguishing	PCS	1/90
EC400C5A	Junction box with screwed lid dim. 150x110x70 mm - self-extinguishing	PCS	1/45
EC400C6A	Junction box with screwed lid dim. 190x140x70 mm - self-extinguishing	PCS	1/25
EC400C7A	Junction box with screwed lid dim. 240x190x90 mm - self-extinguishing	PCS	1/14
EC400C8A	Junction box with screwed lid dim. 300x220x120 mm - self-extinguishing	PCS	1/6
EC400C9A	Junction box with screwed lid dim. 380x300x120 mm - self-extinguishing	PCS	1/4
EC400C10A	Junction box with screwed lid dim. 460x380x120 mm - self-extinguishing	PCS	1/4



960° C

SMOOTH SIDED JUNCTION BOX - SCREWED LID - IP56 410A SERIES

Article	Description- internal dimensions (BxHxD)	UM	Packaging
EC410C4A	Junction box with screwed lid dim. 100x100x50 mm - self-extinguishing	PCS	1/100
EC410C4RA	Junction box with screwed lid dim. 120x80x50 mm - self-extinguishing	PCS	1/100
EC410C5A	Junction box with screwed lid dim. 150x110x70 mm - self-extinguishing	PCS	1/42
EC410C6A	Junction box with screwed lid dim. 190x140x70 mm - self-extinguishing	PCS	1/24
EC410C7A	Junction box with screwed lid dim. 240x190x90 mm - self-extinguishing	PCS	1/16
EC410C8A	Junction box with screwed lid dim. 300x220x120 mm - self-extinguishing	PCS	1/6
EC410C9A	Junction box with screwed lid dim. 380x300x120 mm - self-extinguishing	PCS	1/4
EC410C10A	Junction box with screwed lid dim. 460x380x120 mm - self-extinguishing	PCS	1/4

WALL MOUNTING JUNCTION BOXES - POLYCARBONATE 120°C



SMOOTH SIDED JUNCTION BOX - SCREWED LID - IP56 - POLYCARBONATE 480 SERIES

Article	Description- internal dimensions (BxHxD)	UM	Packaging
EC480C4	Junction box with screwed lid dim. 100x100x50 mm	PCS	1/100
EC480C4R	Junction box with screwed lid dim. 120x80x50 mm	PCS	1/100
EC480C5	Junction box with screwed lid dim. 150x110x70 mm	PCS	1/42
EC480C6	Junction box with screwed lid dim. 190x140x70 mm	PCS	1/24
EC480C7	Junction box with screwed lid dim. 240x190x90 mm	PCS	1/16
EC480C8	Junction box with screwed lid dim. 300x220x120 mm	PCS	1/6
EC480C9	Junction box with screwed lid dim. 380x300x120 mm	PCS	1/4
EC480C10	Junction box with screwed lid dim. 460x380x120 mm	PCS	1/4



SMOOTH SIDED JUNCTION BOX - SCREWED LID - IP56 - POLYCARBONATE 490 SERIES

Article	Description- internal dimensions (BxHxD)	UM	Packaging
EC490C5	Junction box with screwed lid dim. 150x110x140 mm	PCS	1/18
EC490C6	Junction box with screwed lid dim. 190x140x140 mm	PCS	1/16
EC490C7	Junction box with screwed lid dim. 240x190x160 mm	PCS	1/8
EC490C8	Junction box with screwed lid dim. 300x220x180 mm	PCS	1/4
EC490C9	Junction box with screwed lid dim. 380x300x180 mm	PCS	1/3

**ALUMINIUM WALL MOUNTING JUNCTION BOX 485 SERIES**

Article	Internal dimensions	External dimensions	UM	Packaging
EC485C1	90x90x53 mm	100x100x59 mm	PCS	1/32
EC485C2	128x103x55 mm	140x115x60 mm	PCS	1/24
EC485C3	154x129x58 mm	166x142x64 mm	PCS	1/16
EC485C4	178x155x74 mm	192x168x80 mm	PCS	1/18
EC485C5	239x202x85 mm	253x217x93 mm	PCS	1/8
EC485C6	294x244x114 mm	314x264x122 mm	PCS	1/2
EC485C7	392x298x144 mm	410x315x153 mm	PCS	1/2

METAL PLATE FOR ALUMINIUM JUNCTION BOXES 455 SERIES

Article	For box dimensions mm	Metal plate dimensions mm	Centre hole distance mm	UM	Packaging
EC455P2	140x115	122x97	107x66	PCS	1/30
EC455P3	166x142	147x123	121x98	PCS	1/30
EC455P4	192x168	165x124	153x112	PCS	1/30
EC455P5	253x217	206x172	188x153	PCS	1/20
EC455P6	314x264	254x210	238x198	PCS	1/10
EC455P7	410x315	349x260	333x248	PCS	1/10

DIN EN 50022 RAIL FOR ALUMINIUM JUNCTION BOXES 465 SERIES

Article	Dimensions	UM	Packaging
EC465D1	For box dimensions 100x100 mm	PCS	10
EC465D2	For box dimensions 140x115 mm	PCS	10
EC465D3	For box dimensions 166x142 mm	PCS	10
EC465D4	For box dimensions 192x168 mm	PCS	10
EC465D5	For box dimensions 253x217 mm	PCS	10
EC465D6	For box dimensions 314x264 mm	PCS	10
EC465D7	For box dimensions 410x315 mm	PCS	10

METAL BACK PLATE FOR PLASTIC BOXES 450 SERIES

Article	Description	UM	Packaging
EC450P6	For box dimensions 190x140 mm	PCS	1/30
EC450P7	For box dimensions 240x190 mm	PCS	1/30
EC450P8	For box dimensions 300x220 mm	PCS	1/20
EC450P9	For box dimensions 380x300 mm	PCS	1/10
EC450P10	For box dimensions 460x380 mm	PCS	1/10

INSULATING PLASTIC BACK PLATE FOR PLASTIC BOXES 451 SERIES

Article	Description	UM	Packaging
EC451P6	For box dimensions 190x140 mm	PCS	1/30
EC451P7	For box dimensions 240x190 mm	PCS	1/30
EC451P8	For box dimensions 300x220 mm	PCS	1/20
EC451P9	For box dimensions 380x300 mm	PCS	1/10
EC451P10	For box dimensions 460x380 mm	PCS	1/10

DIN EN 50022 RAIL FOR PLASTIC BOXES 460 SERIES

Article	Description	UM	Packaging
EC460D5	For box dimensions 150x110 mm	PCS	10/50
EC460D6	For box dimensions 190x140 mm	PCS	10/50
EC460D7	For box dimensions 240x190 mm	PCS	10/50
EC460D8	For box dimensions 300x220 mm	PCS	10/50
EC460D9	For box dimensions 380x300 mm	PCS	10/25
EC460D10	For box dimensions 460x300 mm	PCS	10/25
EC460	DIN EN50022 rail 35x7,5 - blank - length 2000 mm	PCS	20
EC460F	DIN EN50022 rail 35x7,5 - perforated - length 2000 mm	PCS	20
EC46015	DIN EN50022 rail 35x15 - blank - length 2000 mm	PCS	20
EC46015-3	DIN EN50022 rail 35x15 - blank - length 3000 mm	PCS	20



WALL MOUNTING BOXES



WALL BOX FOR ELECTRICAL DEVICES MAGIC OR GW SYSTEM OR SIMILAR - IP40

300 SERIES

Article	Description - external dimensions (BxHxD)	UM	Packaging
EC300A1	For 1 device - dim. 67x83x51 mm	PCS	1/60
EC300A2	For 2 devices - dim. 67x83x51 mm	PCS	1/60
EC300A3	For 3 devices - dim. 100x83x51 mm	PCS	1/40
EC300A4	For 4 devices - dim. 122x83x51 mm	PCS	1/30
EC300A6	For 6 devices - dim. 177x83x51 mm	PCS	1/20
EC300A4V	For 4 vertical devices (2+2) - dim. 67x180x51 mm	PCS	1/25
EC300A6V	For 6 vertical devices (3+3) - dim. 100x180x51 mm	PCS	1/18



WALL BOX WITH ELECTRICAL DEVICES MAGIC TYPE - IP40

300 SERIES

Article	Description	UM	Packaging
EC30001	Switch 10A	PCS	1/50
EC30002	Bipolar switch 16A	PCS	1/50
EC30003	Shunt	PCS	1/50
EC30004	Single pole push switch	PCS	1/50
EC30005	Single pole illuminated push switch	PCS	1/50
EC30006	Double socket 10/16A - 200/250V	PCS	1/50
EC30007	Combined schuko / Double socket 10/16A - 200/250V	PCS	1/50
EC30008	2 Double socket 10/16A - 200/250V	PCS	1/50
EC30009	2 Shunts	PCS	1/50
EC300010	2 Switches 10A	PCS	1/50



WALL BOX FOR ELECTRICAL DEVICES MAGIC OR GW SYSTEM OR SIMILAR - IP55

310 SERIES

Article	Description - external dimensions (BxHxD)	UM	Packaging
EC310A1	For 1 device - dim. 67x83x59 mm	PCS	1/50
EC310A2	For 2 devices - dim. 67x83x59 mm	PCS	1/50
EC310A3	For 3 devices - dim. 100x83x59 mm	PCS	1/35
EC310A4	For 4 devices - dim. 122x83x59 mm	PCS	1/25
EC310A4V	For 4 vertical devices (2+2) - dim. 67x180x59 mm	PCS	1/20
EC310A6V	For 6 vertical devices (3+3) - dim. 100x180x59 mm	PCS	1/15



WALL BOX WITH ELECTRICAL DEVICES MAGIC TYPE - IP55

310 SERIES

Article	Description	UM	Packaging
EC31001	Switch 10A	PCS	1/50
EC31002	Bipolar switch 16A	PCS	1/50
EC31003	Shunt	PCS	1/50
EC31004	Single pole push switch	PCS	1/50
EC31005	Single pole illuminated push switch	PCS	1/50
EC31006	Double socket 10/16A - 200/250V	PCS	1/50
EC31007	Combined schuko / Double socket 10/16A - 200/250V	PCS	1/50
EC31008	2 Double socket 10/16A - 200/250V	PCS	1/50
EC31009	2 Shunts	PCS	1/50
EC310010	2 Switches 10A	PCS	1/50

**WALL MOUNTING WARNING LIGHT** **320 SERIES**

Article	Description - external dimensions (BxHxD)	UM	Packaging
EC320B	Blue colour - dim. 67x83x92 mm	PCS	1/30
EC320R	Red colour - dim. 67x83x92 mm	PCS	1/30
EC320V	Green colour - dim. 67x83x92 mm	PCS	1/30
EC320G	Yellow colour - dim. 67x83x92 mm	PCS	1/30
EC320T	Transparent colour - dim. 67x83x92 mm	PCS	1/30

**SELF-SUPPORTING PROTECTING COVER FOR DEVICES MAGIC TYPE - IP55** **315 SERIES**

Article	Description - external dimensions (BxHxD)	UM	Packaging
EC315A	Ivory colour - dim. 125x90x20 mm	PCS	1/40
EC315B	White colour - dim. 125x90x20 mm	PCS	1/40
EC315G	Grey colour - dim. 125x90x20 mm	PCS	1/40

**PLASTIC STEPPED GLAND** **470 SERIES**

Article	Description	UM	Packaging
EC47020	Max. diameter hole = 20 mm	PCS	100/800
EC47025	Max. diameter hole = 25 mm	PCS	100/600
EC47032	Max. diameter hole = 32 mm	PCS	100/500
EC47040	Max. diameter hole = 40 mm	PCS	100/300

**SCREW HEAD CAP FOR DOUBLE INSULATION** **TFLEX SERIES**

Article	Description	UM	Packaging
ECTFLEX13	For boxes C1-C2-C3-C4 type	PCS	100/2000
ECTFLEX18	For boxes C5-C6-C7-C8 type	PCS	100/2000
ECTFLEX25	For boxes C9-C10 type	PCS	100/1500