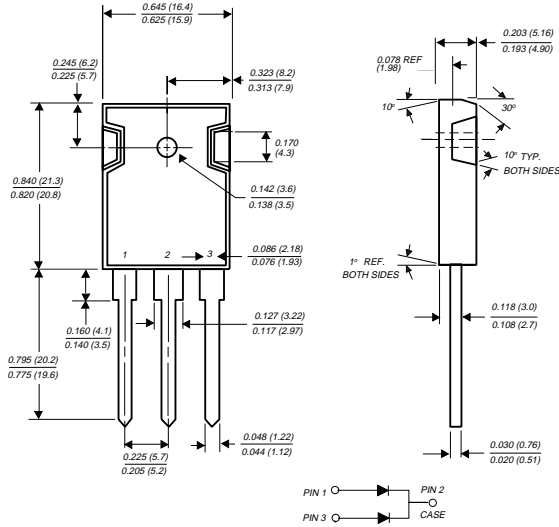


# SBL3030PT AND SBL3040PT

## SCHOTTKY RECTIFIER

Reverse Voltage - 30 and 40 Volts      Forward Current - 30.0 Amperes

### TO-247AD



Dimensions in inches and (millimeters)

### FEATURES

- ◆ Plastic package has Underwriters Laboratory Flammability Classifications 94V-0
- ◆ Metal to silicon rectifier, majority carrier conduction
- ◆ Low power loss, high efficiency
- ◆ High current capability, low forward voltage drop
- ◆ High surge capability
- ◆ For use in low voltage, high frequency inverters, free wheeling, and polarity protection applications
- ◆ Dual rectifier construction, positive center-tap
- ◆ Guardring for overvoltage protection
- ◆ High temperature soldering guaranteed: 250°C/10 seconds, 0.17" (4.3mm)



### MECHANICAL DATA

**Case:** JEDEC TO-247AD molded plastic body

**Terminals:** Lead solderable per MIL-STD-750, Method 2026

**Polarity:** As marked

**Mounting Torque:** 10 in. - lbs. max.

**Mounting Position:** Any

**Weight:** 0.2 ounce, 5.6 grams

### MAXIMUM RATINGS AND ELECTRICAL CHARACTERISTICS

Ratings at 25°C ambient temperature unless otherwise specified.

	SYMBOLS	SBL3030PT	SBL3040PT	UNITS
Maximum repetitive peak reverse voltage	$V_{RRM}$	30	40	Volts
Maximum RMS voltage	$V_{RMS}$	21	28	Volts
Maximum DC blocking voltage	$V_{DC}$	30	40	Volts
Maximum average forward rectified current at $T_C=100^\circ\text{C}$	$I_{(AV)}$	30.0		Amps
Peak forward surge current, 8.3ms single half sine-wave superimposed on rated load (JEDEC Method)	$I_{FSM}$	275.0		Amps
Maximum instantaneous forward voltage per leg at 15A (NOTE 1)	$V_F$	0.55		Volts
Maximum instantaneous reverse current at $T_C=25^\circ\text{C}$ rated DC blocking voltage per leg (NOTE 1) $T_C=100^\circ\text{C}$	$I_R$	1.0 75.0		mA
Typical thermal resistance (NOTE 2)	$R_{\theta JC}$	1.5		$^\circ\text{C}/\text{W}$
Operating junction and storage temperature range	$T_J, T_{STG}$	-40 to +125		$^\circ\text{C}$

#### NOTES:

- (1) Pulse test: 300 $\mu\text{s}$  pulse width, 1% duty cycle
- (2) Thermal resistance from junction to case per leg

# RATINGS AND CHARACTERISTIC CURVES SBL3030PT AND SBL3040PT

FIG. 1 - FORWARD CURRENT DERATING CURVE

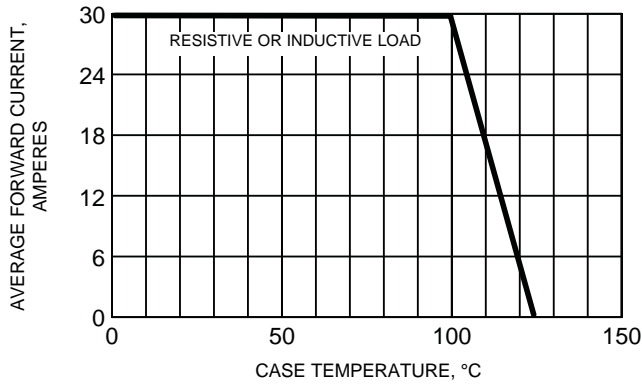


FIG. 2 - MAXIMUM NON-REPETITIVE PEAK FORWARD SURGE CURRENT PER LEG

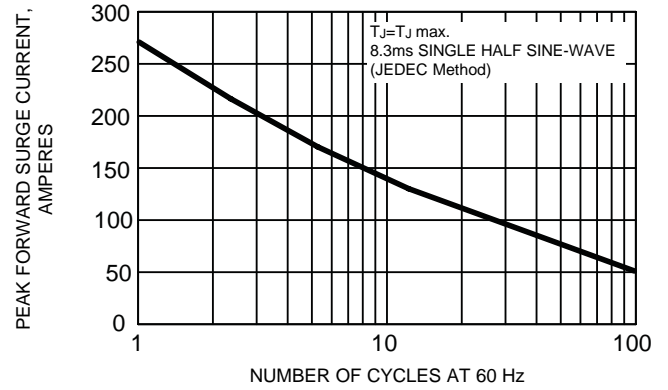


FIG. 3 - TYPICAL INSTANTANEOUS FORWARD CHARACTERISTICS PER LEG

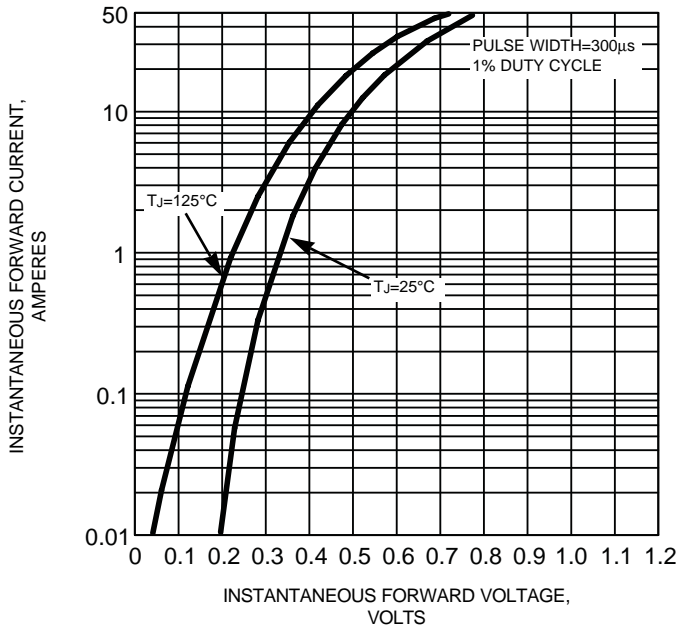


FIG. 4 - TYPICAL REVERSE CHARACTERISTICS PER LEG

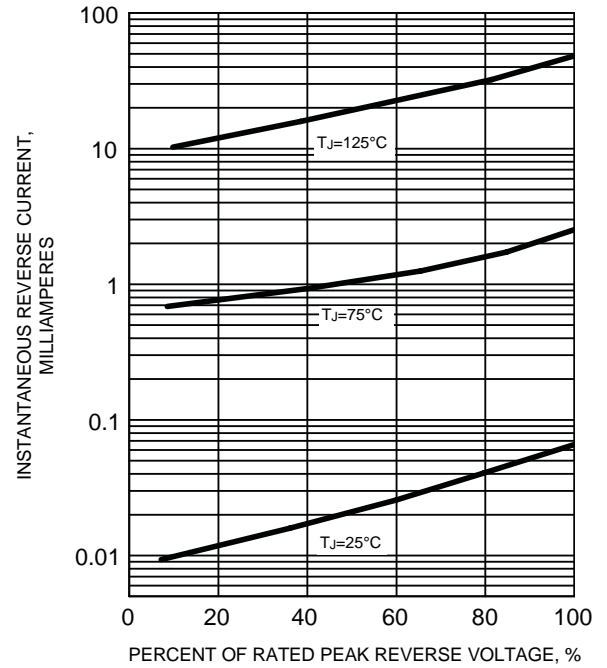


FIG. 5 - TYPICAL JUNCTION CAPACITANCE PER LEG

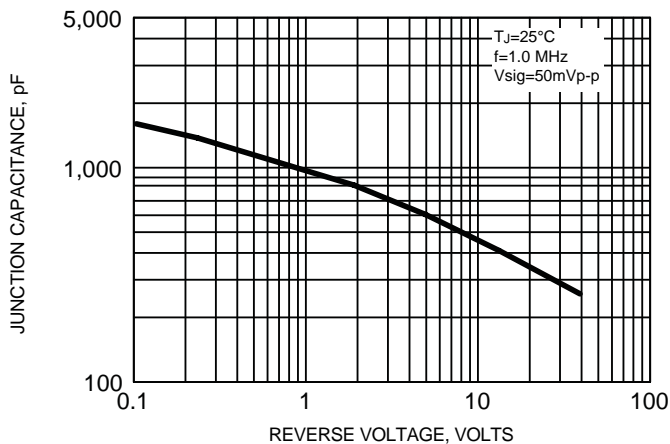
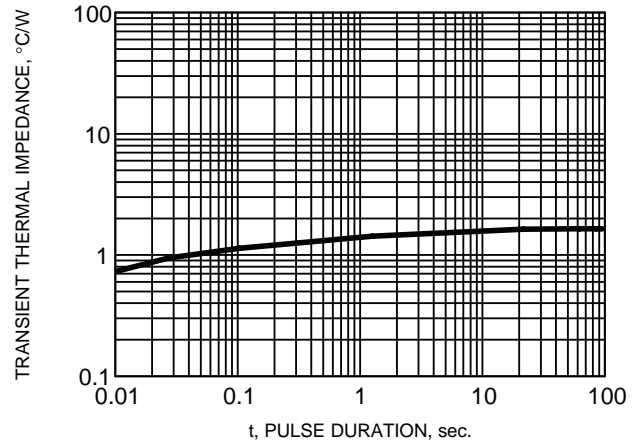


FIG. 6 - TYPICAL TRANSIENT THERMAL IMPEDANCE PER LEG



This datasheet has been download from:

[www.datasheetcatalog.com](http://www.datasheetcatalog.com)

Datasheets for electronics components.