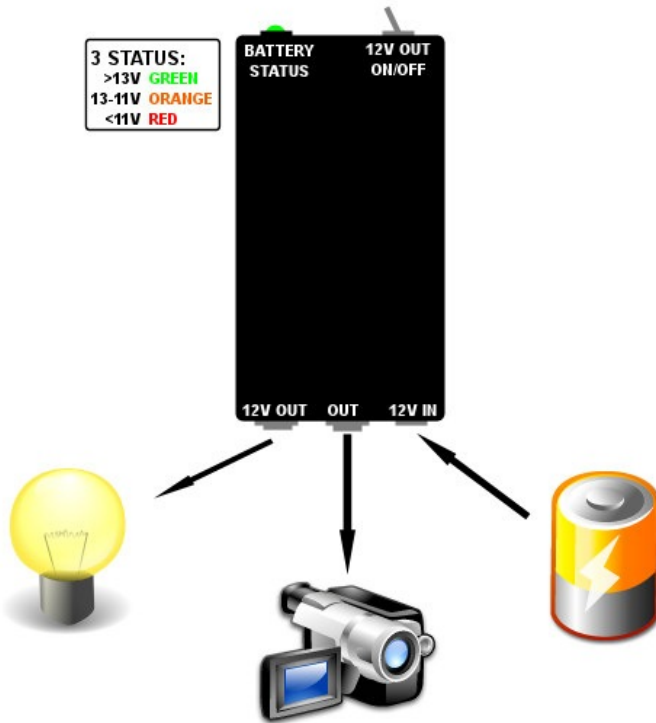


CAMERA POWER CONVERTER



Converts 12V to the adjusted level (via the adjustment screw).

Features:

- Two output
- Precise voltage control
- Fuse protection
- Short-circuit protection
- Heat protection
- Battery status LED
- Belt clip

Minimum output voltage: 1.2V

Maximum output voltage: 11V

Maximum output power: 1500 mA

Additional – switchable - output: identical to the input voltage (eg. for headlamps)

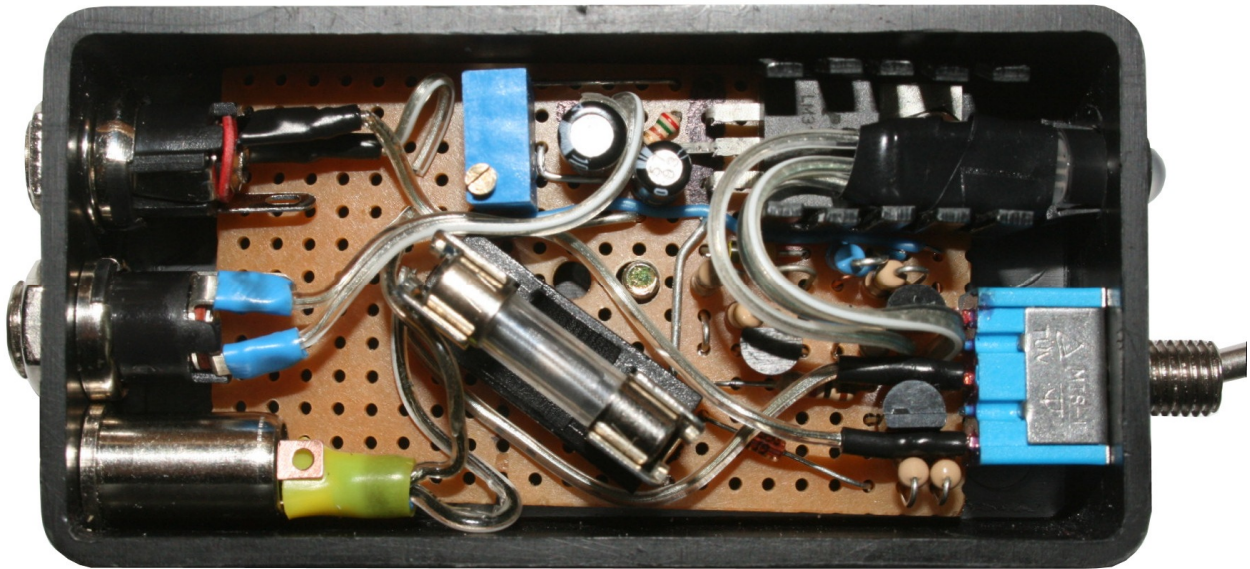
The three-color battery status LED informs you from the status of the input voltage (battery voltage). Between 15.4V and 12.6V the LED is green. Between 12.5V and 11.6V the LED is orange. Below 11.5V the LED is red.

Specifications:

- Input:
 - 12V – 3.5mm STEREO Jack
- Adjustable output:
 - 1.2V – 11V 1500mA – 5.5x2.5mm DC
- Switchable output:
 - identical to the input voltage – 5.5x2.5mm DC
- Battery status LED
 - above 15.6V - blank
 - 15.4V - 12.6V – green
 - 12.5V – 11.6V – orange
 - below 11.5V - red
- Fuse size: 5x20mm



TECHNICAL DATA



Component list:

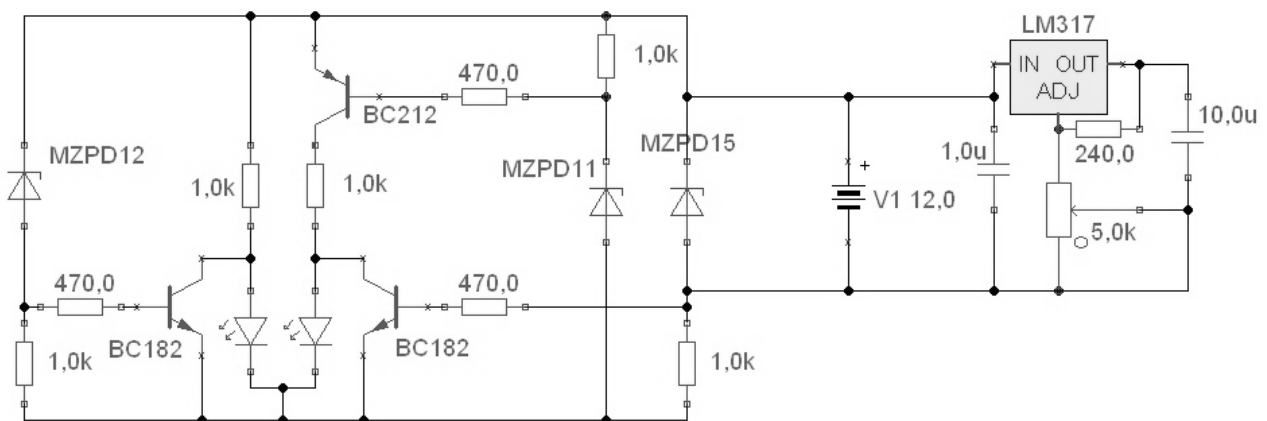
LED Display:

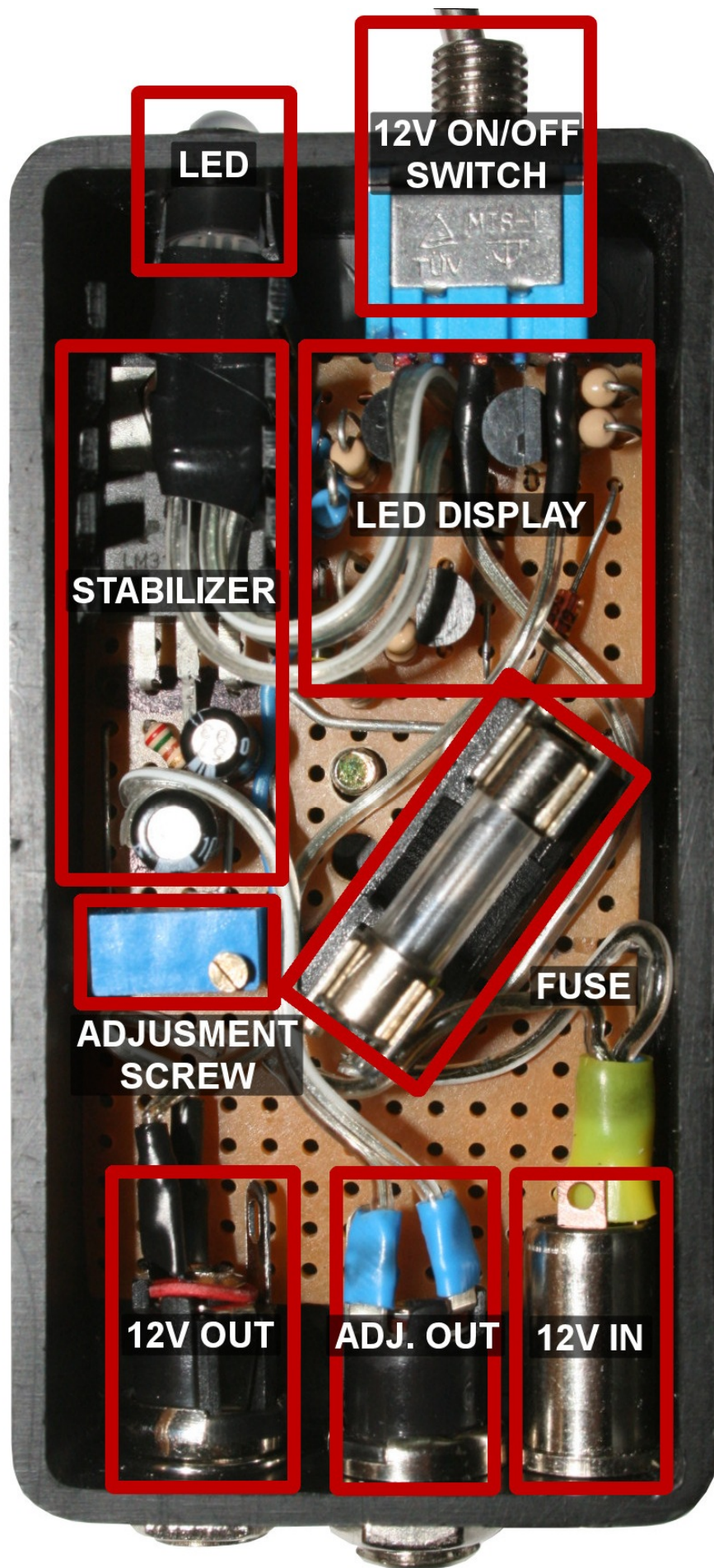
- 1x Red-Green LED
- 5x 5 k Ω resistor
- 3x 470 Ω resistor
- 1x 11V zener-diode
- 1x 13V zener-diode
- 1x 15V zener-diode
- 2x BC182 transistor
- 1x BC212 transistor

Stabilizer:

- 1x LM317 IC
- 1x 240 Ω resistor
- 1x 5 k Ω cermet-trimmer
- 1x 1 μ F 25V capacitor
- 1x 10 μ F 25V capacitor

Electrical circuit:





LED

12V ON/OFF SWITCH

STABILIZER

LED DISPLAY

ADJUSTMENT SCREW

FUSE

12V OUT

ADJ. OUT

12V IN