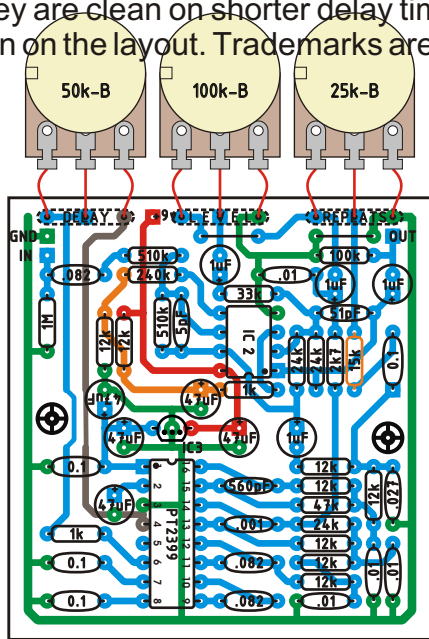


REBOTE DELAY 2.5

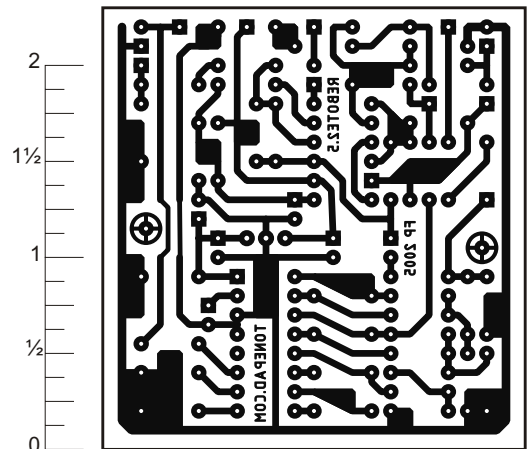
Rev.3.May.31.2006

This is an attempt to improve on the Tonepad Rebote2 Delay by providing better filtering. Shortest delay time is 10mS. Maximum delay time is 580mS, repeats become a little dirty with longest delay times, they are clean on shorter delay times. Off board components except for the potentiometers are not shown on the layout. Trademarks are property of their owners. Visit tonepad.com for more!



LAYOUT

READY TO TRANSFER



NOTES:

5 volt regulator IC3 must be oriented so that its pins match the layout. (in case of using 1,000mA regulator)

* Can be changed from 15k to 10k to get endless repeats with repeats pot maxed. If this results in undesired runaway repeats, change it to 11k, or a 6.8k resistor in series with a 5k trimpot adjusted for endless repeats.

Parts List

- | | |
|-------------------------------------|---------------|
| IC's | Pots |
| IC1 - PT2399 | 1 - 25k lin. |
| IC2 - TL072 | 1 - 50k lin. |
| | 1 - 100k lin. |
| IC3 - 5v positive Regulator (78L05) | |



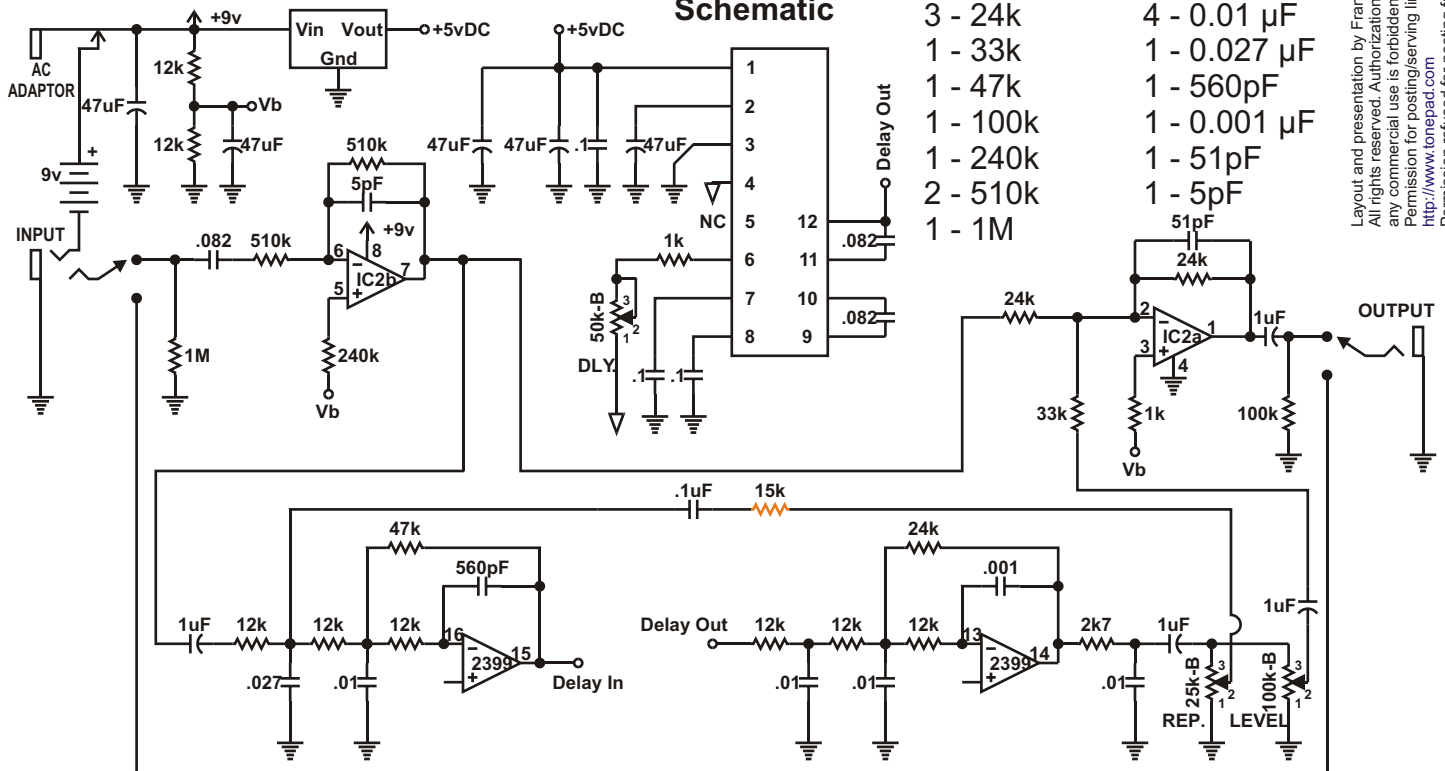
Resistors

- 2 - 1k
- 1 - 2k7 (2.7k)
- 8 - 12k
- 1 - 15k*
- 3 - 24k
- 1 - 33k
- 1 - 47k
- 1 - 100k
- 1 - 240k
- 2 - 510k
- 1 - 1M

Capacitors

- 5 - 47 μ F
- 4 - 1 μ F
- 4 - 0.1 μ F
- 3 - 0.082 μ F
- 4 - 0.01 μ F
- 1 - 0.027 μ F
- 1 - 560pF
- 1 - 0.001 μ F
- 1 - 51pF
- 1 - 5pF

Schematic



Layout and presentation by Francisco Peña 2001-2005©.
 All rights reserved. Authorization for personal use only.
 any commercial use is forbidden.
 Permission for posting/serving limited to
<http://www.tonepad.com>
 Permission refused for posting from other sites.