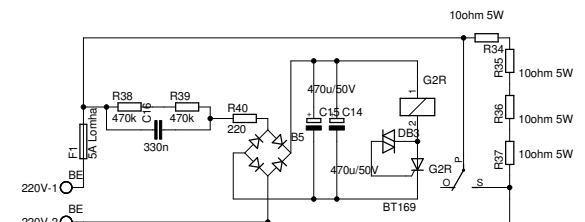


Lágyindító

Kimenet



10x 4700u / 50V

0.1 SHUNT
(10 db 101mV / 2W)

MEGA8-P	
1	PC6(RESET)
2	PC0(ADC0)
3	PC1(ADC1)
4	PC2(ADC2)
5	PC3(ADC3)
6	PC4(ADC4/SDA)
7	PC5(ADC5/SCL)
8	GND
9	PB6(XTAL1/TOSC1)
10	PB7(XTAL2/TOSC2)
11	GND
12	VCC
13	PD0(RXD)
14	PD1(TXD)
15	PD2(INT0)
16	PD3(INT1)
17	PD4(XCK10)
18	PD5(T1)
19	PD6(AIN0)
20	PD7(AIN1)
21	GND
22	PB0(ICP)
23	PB1(OC1A)
24	PB2(SS/OC1B)
25	PB3(MOS/OC2)
26	PB4(MISO)
27	PB5(SCK)
28	GND

Toroid 800VA

9x MJ15003

9x 0.1 / 1W

