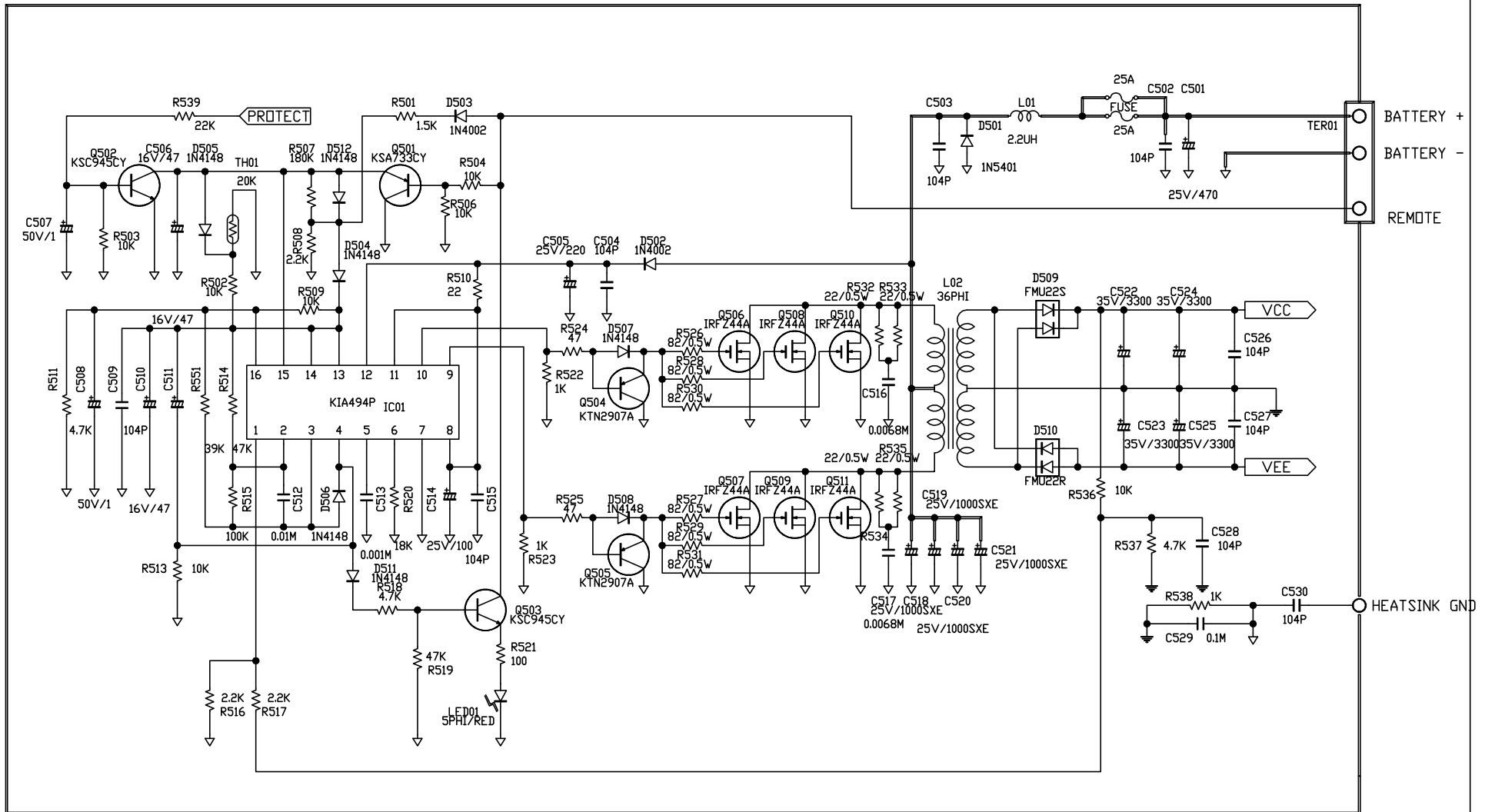
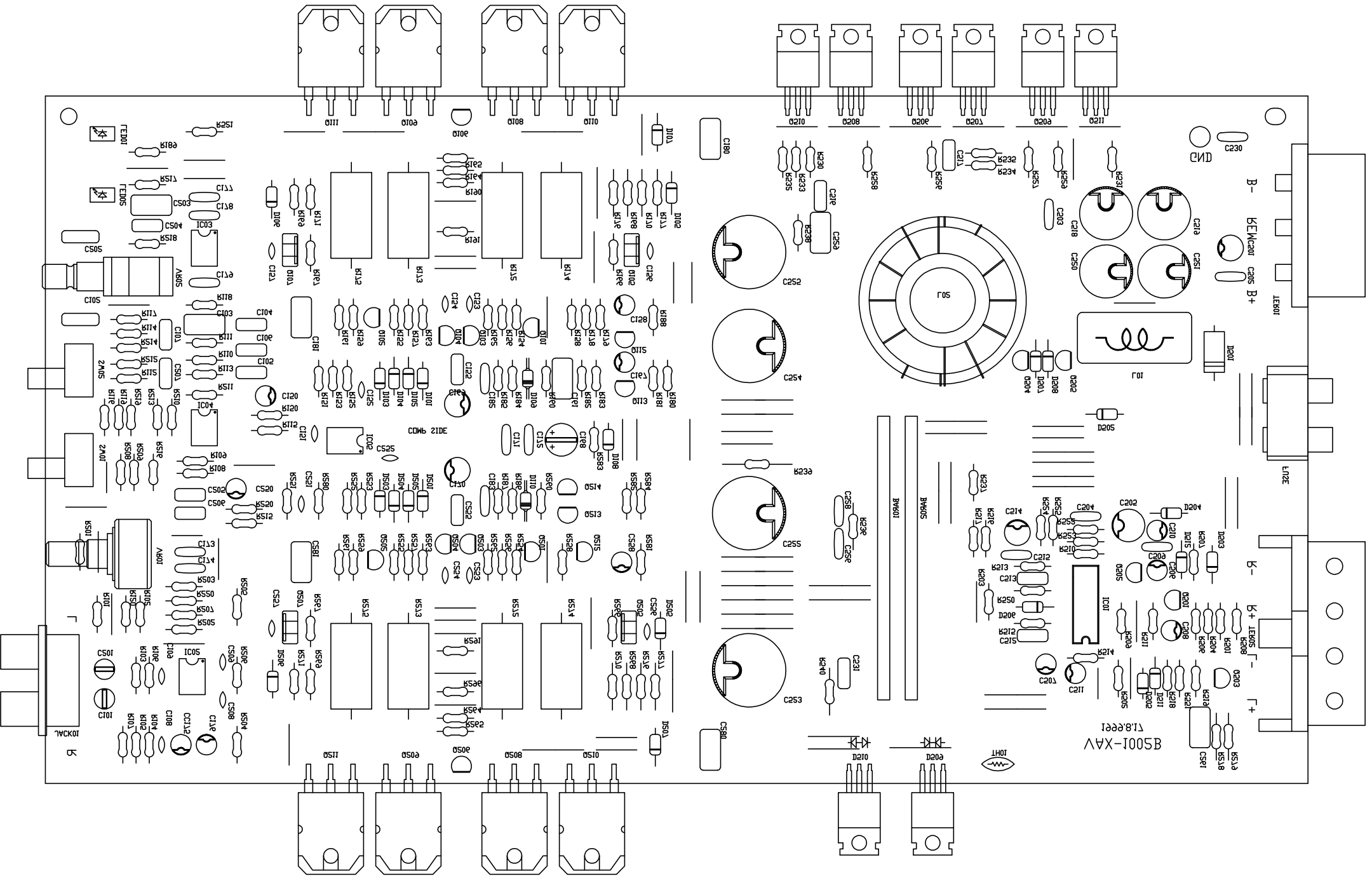


100Wx2 AMPLIFIER
CRUSADER-600 (AUDIO)



100Wx2 AMPLIFIER
CRUSADER-600 (DC-DC)



CRUSADER 600 PART LIST

DESCRIPTION	SPECIFICATION	Q'TY	DRAWING NO.	REMARK
PCB - MAIN	168.5 X 309.5 X 1.6T (FR-1) VAX-1002B	1	CRUSADER 600 PCB	
POWER T.R	KSA 1695-0	4	Q 109, 111, 209, 211	
	KSC 4468-0	4	Q 108, 110, 208, 210	
I.C.	KIA 494 P	1	IC 01	
	KIA 4559 P	3	IC 02, 03, 04	
	KA 5532	1	IC 05	
FET	IRFZ 44A	6	Q 506, 507, 508, 509, Q 510, 511	
DIODE	FMU 22 S	1	D 509	
	FMU 22 R	1	D 510	
DIODE	1N 5401	1	D 501	
	1N 4002	6	D 105, 106, 205, 206 D 502, 503	
-SWITCHING	1N 4148	18	D 101, 102, 103, 104 D 107, 108, 201, 202 D 203, 204, 207, 504 D 505, 506, 507, 508 D 511, 512	
-ZENNER	UZP 15 B 1[W]	2	D 109, 110	
TRANSISTOR	KSC 945 C-Y	8	Q 106, 112, 206, 212 Q 213, 214, 502, 503	
	KSA 733 C-Y	2	Q 113, 501	
	KSC 1845 - F	2	Q 101, 201	
	KSA 992 - F	2	Q 102, 202	
	KSC 2316 Y	2	Q 104, 204	
	KSA 916 Y	2	Q 103, 203	
	TIP 41 C	2	Q 105, 205	
	TIP 42 C	2	Q 107, 207	
	KTN 2907 A	2	Q 504, 505	
R - CEMENT	5[W] 0.1 J	8	R 172, 173, 174, 175 R 272, 273, 274, 275	
LED	KLG - 114 L	1	LED 02	
	KLR - 114 L	1	LED 01	
R - CARBON	1/2[W] 4.7 (S)	8	R 168, 169, 170, 171	
(J)			R 268, 269, 270, 271	
	1/2[W] 22 (S)	8	R 178, 179, 278, 279 R 532, 533, 534, 535	
	1/2[W] 82 (S)	6	R 526, 527, 528, 529 R 530, 531,	

CRUSADER 600 PART LIST

DESCRIPTION	SPECIFICATION	Q'TY	DRAWING NO.	REMARK
	1/2[W] 100 (S)	4	R 166, 167, 266, 267	
	1/2[W] 820 (S)	4	R 184, 185, 186, 187	
	1/2[W] 6.8 K (S)	1	R 189	
	1/4[W] 10	2	R 152, 252	
	1/4[W] 22	1	R 510	
	1/4[W] 47	10	R 162, 163, 190, 191	
			R 262, 263, 291, 296	
			R 524, 525	
	1/4[W] 100	3	R 120, 220, 521	
	1/4[W] 680	1	R 250	
	1/4[W] 820	4	R 156, 157, 256, 257	
	1/4[W] 1 K	10	R 101, 103, 150, 183	
			R 201, 203, 280, 522	
			R 523, 538	
	1/4[W] 1.2 K	6	R 160, 161, 176, 260	
			R 261, 276	
	1/4[W] 1.5 K	1	R 501	
	1/4[W] 2.2 K	8	R 116, 165, 216, 265	
			R 283, 508, 516, 517	
	1/4[W] 2.7 K	2	R 102, 202	
	1/4[W] 3.3 K	4	R 158, 159, 258, 259	
	1/4[W] 4.7 K	10	R 154, 155, 164, 251	
			R 254, 255, 264, 511	
			R 518, 537	
	1/4[W] 5.6 K	2	R 105, 205	
	1/4[W] 6.8 K	4	R 117, 118, 217, 218	
	1/4[W] 7.5 K	1	R502	
	1/4[W] 8.2 K	2	R 153, 253	
	1/4[W] 10 K	12	R 151, 177, 180, 182	
			R 277, 282, 284, 504	
			R 506, 509, 513, 536	
	1/4[W] 18 K	1	R 520	
	1/4[W] 22 K	7	R 104, 108, 115, 204	
			R 208, 215, 539	
	1/4[W] 33 K	2	R 106, 206	
	1/4[W] 39 K	1	R 551	
	1/4[W] 47 K	5	R 188, 281, 503, 514	
			R 519	
	1/4[W] 56 K	2	R 111, 211	

CRUSADER 600 PART LIST

DESCRIPTION	SPECIFICATION	Q'TY	DRAWING NO.	REMARK
	1/4[W] 100 K	9	R 107, 109, 112, 119	
			R 207, 209, 212, 219	
			R 515	
	1/4[W] 150 K	4	R 110, 113, 210, 213	
	1/4[W] 180 K	1	R 507	
	1/4[W] 220 K	1	R 181	
	1/4[W] 560 K	2	R 114, 214	
C-CAPACITOR	10 pF J CH	2	C 109, 209	
	47 pF J CH	4	C 153, 154, 253, 254	
	100 pF J SL	8	C 108, 151, 156, 157	
			C208, 251, 256, 257	
	470 pF BK	2	C 152, 252	
	0.1 uF ZF	17	C 171, 172, 173, 174	
			C 177, 178, 179, 182	
			C 183, 502, 503, 504	
			C 509, 515, 526, 528	
			C 530	
M-CAPACITOR	100[V] 102 J	1	C 513	
	100[V] 682 J	2	C 516, 517	
	100[V] 103 J	5	C 105, 106, 205, 206	
			C 512	
	100[V] 153 J	2	C 107, 207	
	100[V] 473 J	4	C 104, 155, 204, 255	
	100[V] 683 J	2	C 102, 202	
	100[V] 104 J	7	C 161, 180, 181, 261	
			C 280, 281, 529	
	100[V] 124 J	2	C 103, 203	
E-CAPACITOR	50[V] R47 uF	1	C 167	
	50[V] 1 uF	4	C 158, 258, 507, 508	
	50[V] 4R7 uF	3	C 175, 176, 250	
	50[V] 22 uF	1	C 150	
	35[V] 3300 uF (SRF)	4	C 522, 523, 524, 525	GOLD
	25[V] 100 uF	3	C 169, 170, 514	
	25[V] 220 uF	1	C 505	
	25[V] 470 uF	1	C 501	
	25[V] 1000 uF (SXE)	4	C 518, 519, 520, 521	GOLD
	16[V] 47 uF	3	C 506, 510, 511	
	35[V] 4R7 uF (B.P)	2	C 101, 201	
	16[V] 100 uF (B.P)	1	C 168	

CRUSADER 600 PART LIST

DESCRIPTION	SPECIFICATION	Q'TY	DRAWING NO.	REMARK
THERMISTOR	20 [.]	1	TH 1	
COIL-SPRING	12TURN (L) 2.0 Φ W/CORE	1	L 01	
COIL-TROID	1st : 1.0 Φ X 10 X 6 (T)			
1st :PEW	2nd: 1.5 Φ X 2 X 15 (T)	1	L 02	
2nd:UEW	CORE:36 Φ ISU (PM5)			
VOLUME	A - 25 K X 2 (L=15m/m)	1	VR 01	
VOLUME	V9MG(4R)PH15KC3B50Kx4	1	VR 02	
SLIDE SWITCH	JSS - 2219	2	SW 01, 02	
RCA JACK	2 pin GOLD (WJ-9205A1)	1	JACK 01	
TERMINAL	3 pin GOLD "L" type (WT-9103)	1	TER 01	
	4 pin GOLD "L" type (WT-9101)	1	TER 02	
FUSE HOLDER	WF - 9604P	1	FUSE	
FUSE	25 [A]	4		
LUG TERMINAL	#20 BLK 80m/m 3.2 Φ	1		
VOLUME KNOB	RA	2		
CUTION	10 X 10 X 6(T)	3		
LED SUPPORT	10 m/m	2		
SILICON-RUBBER	AR2330P	320	M/M	
JUMP	COPPER (L=71 m/m)	2	BAR 01, 02	
TR B.K.T	A 100 X 12 X 5(T)	1		
	A - 1 100 X 12 X 5(T)	2		
	C 48 X 12 X 5(T)	1		
PCB B.K.T	A TYPE	2		
SCREW	T/T PH 3 X 8	14		
(BLACK)	T/T PH 3 X 15	11		
	T/T WPH 3 X 6	10		
	T/S-1 BH 4 X 16	4		
	SPRING WASHER 4 Φ	4		
	PLANE WASHER 4 Φ	4		
HEAT SINK	310 m/m	1	CRUSADER 600 HEATSINK	
BOTTOM	309 m/m	1	CRUSADER 600 BOTTOM	
FRONT		1	CRUSADER 600 FRONT	
REAR		1	CRUSADER 600 REAR	
POLY BAG	350 X 470 X 0.05T	1		
	80 X 110 X 0.05T	1		
SILICAGEL	3 [g]	1		
OPP TAPE		1		
TUBE	YELLOW 1 Φ	0,05		
CABLE TIE	CLAMP			

CRUSADER 600 PART LIST

DESCRIPTION	SPECIFICATION	Q'TY	DRAWING NO.	REMARK
LOCKING PAINT	THREE BOND 1 [Kg]	0,001		
MAXBOND	1603HFR 1 [Kg]	0,004		
PE SHEET	400 X 600 X 1T	0,5		
GIFT BOX	CRUSADER 600	1		
MANUAL		1		
SERIAL NO.		1		
WARRANTY CARD		1		
INNER BOX		0,25		
CARTON BOX		1		