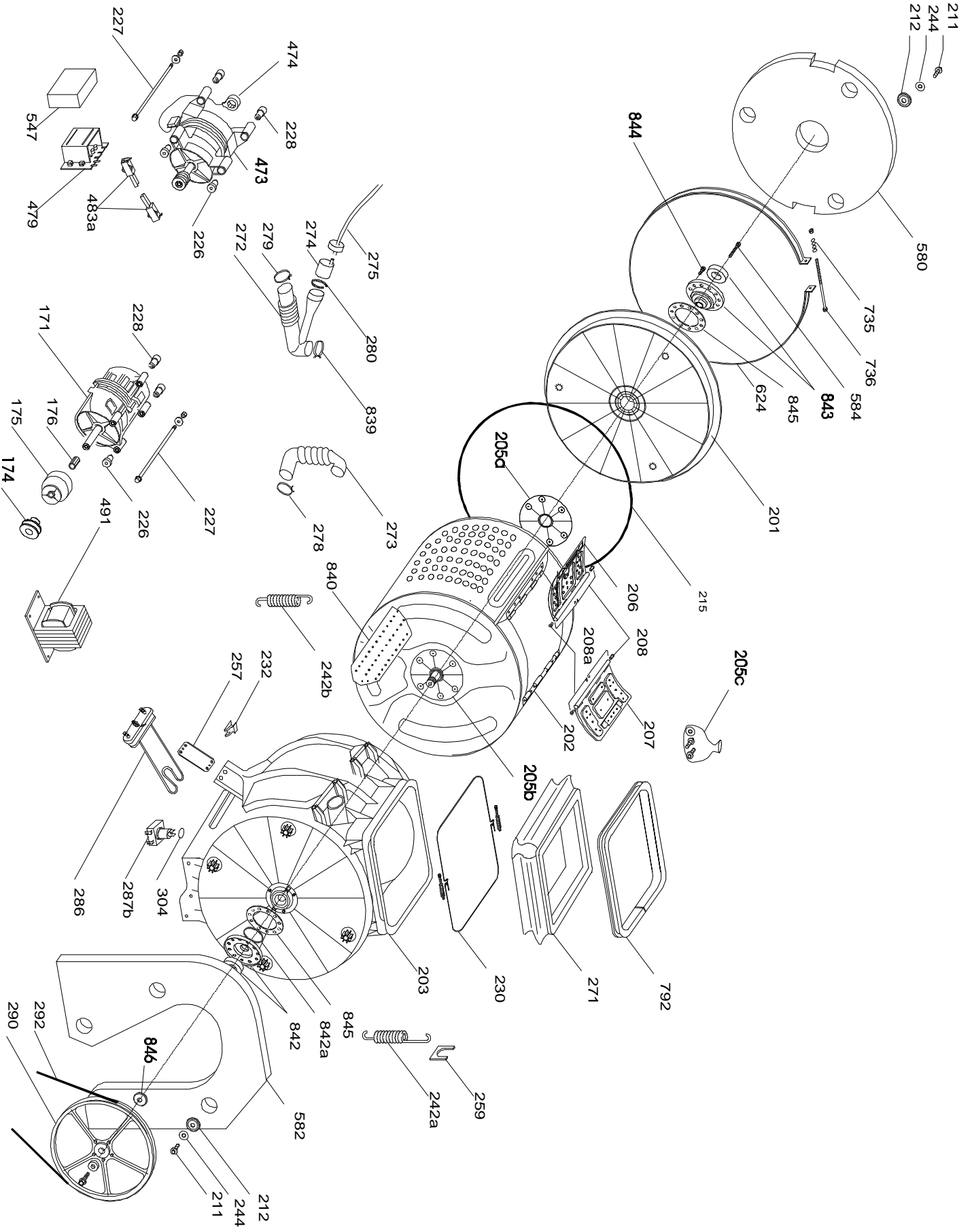




W.MACHINE/WASHER-DRYER

37505583 FET106

Service Manual





37505583 FET106 9952 (20/12/1999)

Ref.	Descrizione - Description - Beschreibung - Descripcion	Ricambio Part No. Piece E-Teil Pieza	Inizio Beginning Debut Begin Inicio	Fine Ending Fin End Fin
2	Programs disc	80051185		
5	Door safety device	80001407		
10	Timer/select. knob	80051030		
14	Temp.regulation knob	80051029		
14b	Piston pin	80034044		
14d	Term-potenz.knobs support	80034069		
14e	Timer knobs support	80034051		
15	Cam disc	80027998		
19	Button	80051028		
19t	Yellow button	80051218		
31	Control panel	80051201		
34	White cover	80028129		
37	Upper frame	80027121		
44	Direction control rod	92673946		
55	Insulating side	80014517		
68	Plug	80027139		
70	Trolley wheel	80001795		
70a	Chassis assy with wheels	80012917		
70b	Protection	80034267		
76	Cabinet assy	80050487		
76b	Cabinet side cover	80007347		
76c	Cabinet side cover gasket	80007172		
77	Rear panel	80050345		
79	Rear foot	92606474		
80	Front foot	92692300		
94	Filter knob	92615285		
94a	Bolt	92415140		
95	Filter cartridge	92945468		
96	Gasket	92606391		
96a	Gasket	92607639		
97b	Filt.hous.without recycle	92132109		



37505583 FET106 9952 (20/12/1999)

Ref.	Descrizione - Description - Beschreibung - Descripcion	Ricambio Part No. Piece E-Teil Pieza	Inizio Beginning Debut Begin Inicio	Fine Ending Fin End Fin
101	Dispenser drawer	80002132		
114	Driving lever	80016595		
118	Spring	80001183		
132	Hose	80034770		
133	Hose clip	80034762		
134	Solenoid valve	90450750		
138	Drain hose	80034556		
138a	Drain house elbow	80001787		
141	Rubber washer	92485226		
142	Fill hose	92250869		
151	Timer	91203547		
153	Pressure switch	80043433		
155a	White indicator light	80013006		
155a	White indicator light	80007743		
157	Wiring harness	80049940		
161	Drain/recycle pump	80036874		
164	Anti jamming filter radio	80001399		
201	Front flange	80035132		
202	Drum	80035249		
203	Tub	80035157		
205a	Right drum shaft assy	80000516		
205b	Left drum shaft assy	80032683		
205c	Drum shaft fixing kit	81448136		
206	Rolling shutt without hook	80024920		
207	Rolling shutter with hook	80024912		
208	R/H spring	80010242		
208a	L/H spring	80010259		
211	Bolt	80046659		
212	Asbestos washer	80000755		
215	Tub gasket	80018989		
227	Motor stay bolt	80000995		



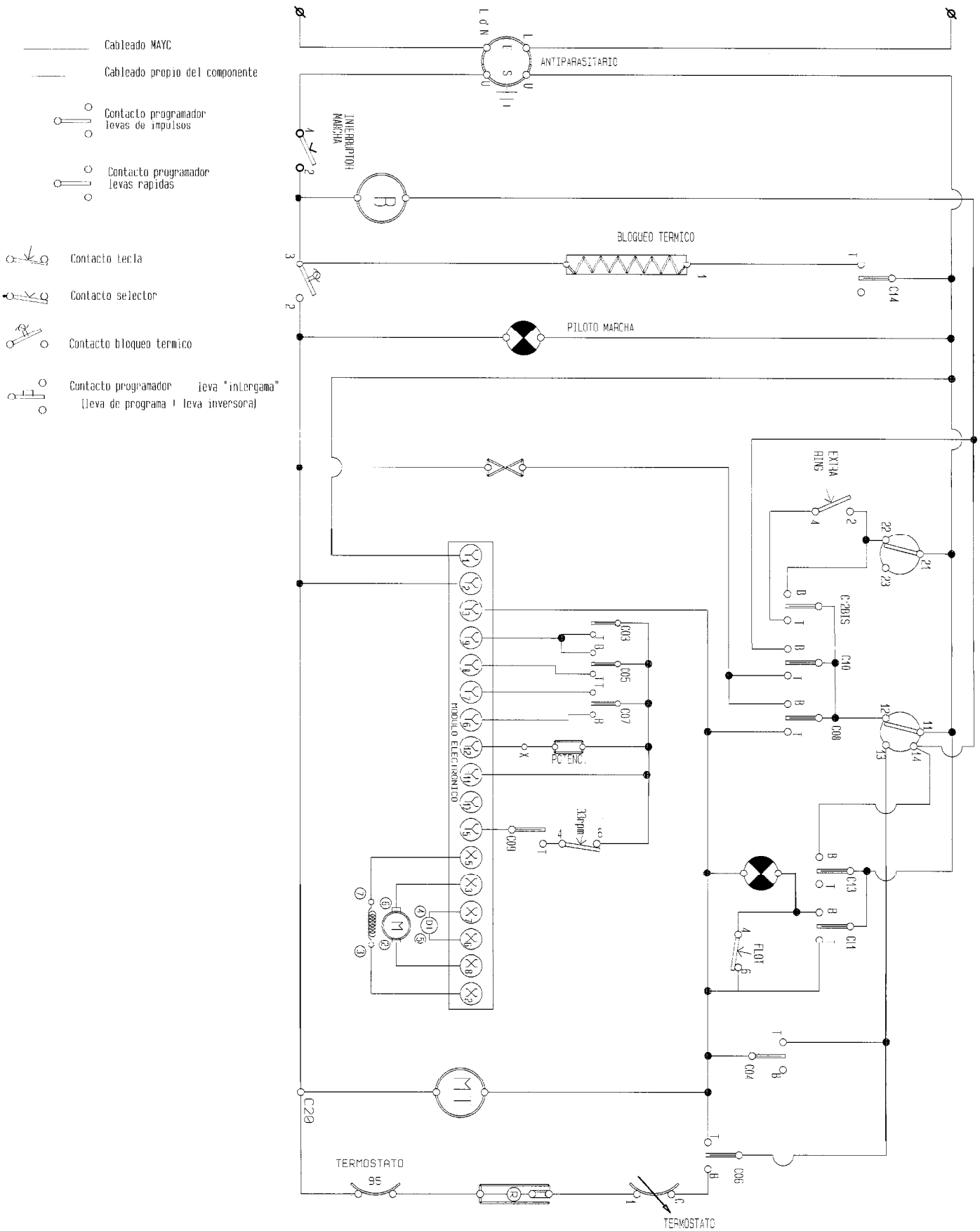
37505583 FET106 9952 (20/12/1999)

Ref.	Descrizione - Description - Beschreibung - Descripción	Ricambio Part No. Piece E-Teil Pieza	Inizio Beginning Debut Begin Inicio	Fine Ending Fin End Fin
228	Shock absorber bearing	80006661		
230	Tub gasket clip	92787316		
232	Heater holder	92675891		
242a	R/H support spring	80002306		
242b	L/H support spring	80002298		
244	Washer	80000664		
250	Damper pads	92697838		
251	Shock absorber spring	80002322		
256	Clamp	92851302		
257	Damper slide	92863976		
259	Support	92673961		
271	Door gasket	80007818		
272	Discharge pipe	80033939		
273	Fill pipe	80001589		
274	Pressure switch air chamber	80001845		
275	5x8 hose	80024987		
278	Hose clip	81402299		
279	Hose clip	80006448		
280	Hose clip	92470202		
281	Shock Absorder grommet	92606227		
286	Heater	80023609		
287g	Thermostat	92747690		
288	Temperature regulator	80030372		
290	Drum pulley	80036577		
292a	Extensible belt	80036791		
304	Gasket	92447119		
473	Commutator motor	80050042		
479	Electronic control	91203679		
483a	Brush with brush holder	81451164		
491	Mains cable	80001530		
509b	T/NO regul potenziometer	91200444		



37505583 FET106 9952 (20/12/1999)


Ref.	Descrizione - Description - Beschreibung - Descripcion	Ricambio Part No. Piece E-Teil Pieza	Inizio Beginning Debut Begin Inicio	Fine Ending Fin End Fin
547	Module protection	91612044		
557	Hose support hook	80001753		
568	Spring for push.button	92483916		
569	Pin for push buttons	80012008		
580	Front counterweight	80001720		
582	Pulley side counterweight	80001738		
584	Drum support fixing screw	80001191		
586	Counter cover pin	92730696		
587	Counter cover stopper	92137306		
588	Siphon	92134972		
603	Self-cleaning protect.	80034655		
604	Filter door	80011828		
606	Spring for filter door	80002264		
614	Therm.press.push b. supp.	80019673		
618	Unipolar NC switch	80018252		
618a	Unipolar NA switch	80018245		
624	Tire for tightening tub	80018666		
735	Closure ring spring	80002314		
736	Closure ring screw	80018690		
789	Door safety device bracket	80000466		
790	Door safety device spring	80031784		
792	Gasket support	80027261		
828b	Tach.coil	81451163		
839	Clip	80001142		
842	Tub bearing disk	80037476		
843	Flange bearing disk	80037492		
844	Disk fixing screw	80040751		
845	Gasket	80032626		
846	Washer	80036585		
999	Wiring diagram	80050875		



SCHEMA ELETTRICO 80050875

L E G E N D A - LIST - LISTE - VERZEICHNIS - LEYENDA

- CARICO ACQUA CALDA - WARM WATER FILLING - CHARGEMENT EAU CHAUDE
WARMWASSERFÜLLUNG - CARGA AGUA CALIENTE
- CARICO ACQUA FREDDA - COLD WATER FILLING - CHARGEMENT EAU FROID
KALTWASSERFÜLLUNG - CARGA AGUA FRIA
- CARICO ACQUA EXTRA - EXTRA WATER FILLING - CHARGEMENT EAU EXTRA
EXTRAWASSERFÜLLUNG - CARGA AGUA EXTRA
- POMPA LAVAGGIO - WASHING PUMP - POMPE LAVAGE
WASCHUNG-PUMP - MOTOBOMBA LAVADO
- POMPA SCARICO - DRAIN PUMP - TUYAU DE VIDANGE
ABLAUSCHLAUCH - MOTOBOMBA DESAGUE
- DIRETTA TIMER - TIMER DIRECT FED - ALIMENTATION DIRECTE DU TIMER
TIMER DIREKT SPEISUNG - ALIMENTACION DIRECTA TIMER
- PIENO TIMER - TIMER FED WITH WATER IN THE TUB - ALIMENTATIO TIMER AVEC EAU DANS LA CUVE
TIMER-SPEISUNG MIT WASSER IN BOTTEICH - TIMER ALIMENTADO CON AGUA EN CUBA
- VUOTO TIMER - TIMER FED WITHOUT WATER IN THE TUB - ALIMENTATION SANS EAU DANS LA CUVE
TIMER-SPEISUNG OHNE WASSER IN BOTTEICH - ALIMENTACION TIMER SIN AGUA EN CUBA
- ACQUA IN VASCA - WATER IN THE TUB - EAU DANS LA CUVE
WASSER IN DEN WASCHBOTTEICH - FLOT
- CARICO ALTO LIVELLO - HIGH LEVEL FILLING - CHARGEMENT HAUT NIVEAU
HOMES NIVEAU FÜLLUNG - CARGA NIVEL ALTO
- LAVAGGIO 35 GIRI - 35 WASHING REVOLUTION - LAVAGE 35 TOURS/N
35 ABWASHUNG DREHZAHL - LAVADO 35 R.P.M.
- INVERSORE TASTO EXTRA - EXTRA PUSH-BUTTON REVERSING - INVERSEUR POUSSOIR EXTRA
EXTRA-TASTE-UMSTEUERMECH - INVERSION TECLA EXTRA
- RESISTENZA LAVAGGIO - WASHING HEATER - RESISTANCE LAVAGE
WIDERSTAND WASCHGANG - RESISTENCIA LAVADO
- BLOCCAPORTA VOLTMETRICO - VOLTMETRIC DOOR SAFETY DEVICE
SECURITE' OVERTURE HUBLE' VOLTMETRIQUE
VOLTMETRISCHES TÜRÖFFNUNG-SICHEREITSYST - BLOCAPUERTA VOLTMETRICO
- CODICE 1 - CODE 1 - CODE 1 - CODE 1 - CODIGO 1
- CODICE 2 - CODE 2 - CODE 2 - CODE 2 - CODIGO 2
- CODICE 4 - CODE 4 - CODE 4 - CODE 4 - CODIGO 4
- CODICE 8 - CODE 8 - CODE 8 - CODE 8 - CODIGO 8
- B - BASSO LIVELLO - LOW WATER LEVEL - BASSE NIVEAU EAU - NIEDRIGE WASSERMENGE - NIVEL BAJO
- N - ALTO LIVELLO - HIGH WATER LEVEL - HAUTE NIVEAU EAU - HOHES WASSERMENGE - NIVEL ALTO
- D - INVERSORE DELICATO - SOFT PROGRAMS REVERSING - INVERSEUR PROGRAMMES DELICAT
DELIKATE UMSTEUERMECH - INVEOSOR DELICADO
- F - INVERSORE FORTE - INTENSIVE PROGRAMS REVERSING - INVERSEUR PROGRAMMES INTENSIF
INTENSIVE UMSTEUERMECH - INVEOSOR ENERGIICO
- G - INVERSORE RICIRCOLO - WATER RECYCLE REVERSING - INVERSEUR RECIRCLE EAU
WASSER WIEDER UMSTEUERMECH - INVEOSOR RECICLACION
- L - INVERSORE LANA - WOOL REVERSING - INVERSEUR LAINE - WOLLE UMSTEUERMECH - INVEOSOR LANA
- (P) - CARICO IN MOVIMENTO - WATER FILLING DURING THE WASHING - CHARGEMENT EAU PENDANT LE LAVAGE
WASSERFÜLLUNG WAHREN DER WASCHUNG - CARGA DURANTE EL LAVADO
- P - CARICO ACQUA - WATER FILLING - CHARGEMENT EAU - WASSERFÜLLUNG - CARGA AGUA
- CARICO (FREDDA) - COLD WATER FILLING - CHARGEMENT EAU FROID - KALTWASSERFÜLLUNG - CARGA AGUA FRIA
- CARICO (CALDA) - WARM WATER FILLING - CHARGEMENT EAU CHAUDE - KARMWASSERFÜLLUNG - CARGA AGUA CALIENTE
- CARICO (MISC) - MIXER WATER FILLING - CHARGEMENT EAU MELANGE - GEMISCHTE WASSERFÜLLUNG - CARGA AGUA MEZCLADA
- R.R. - WASHING HEATER - RESISTENCE LAVAGE - WIDERSTAND HEATER - RESISTENCIA LAVADO
- LAVORO - WASHING - LAVAGE - WASCHUNG - FUNCIONANDO
- SCARICO - DISCHARGE - VIDANGE - ABLAUF - UCIADO
- POMPA - WASHING PUMP - POMPE LAVAGE - WASCHUNG-PUMP - MOTOBOMBA
- CENTR. - SPEED SPIN - ESSORAGE - SCHLEUDERUNG - CENTRIFUGADO
- EXTRA - EXTRA PUSH-BUTTON REVERSING - INVERSEUR POUSSOIR EXTRA - EXTRA-TASTE-UMSTEUERMECH - INVERSION TECLA EXTRA
- S.S. - WATER IN THE TUB - EAU DANS LA CUVE - WASSER IN DEN WASCHBOTTEICH - FLOT

		VARIANTI SIGNIFICATIVE SIGNIFICANT VARIATIONS VARIATIONS SIGNIFICATIVES BEZEICHNENDE VARIANTEN VARIANTES SIGNIFICATIVAS	
		DATA-DATE-DATE DATUM - FECHA	INDICE-INDEX-INDEX ANZEIGER-INDICE
LAVATRICI - WASHINGMACHINES MACHINES A LAVER-WASHMASCHINEN-LAVADORA		04.01.1996 08.02.1999	A00 A03
DIAGRAMMA TIMER TIMER DIAGRAM - SCHEMA TIMER - TIMER-SCHEMA DIAGRAMA TIEMPOS PROGRAMADOR			
CODICE DISEGNO - DRAWING CODE - CODE SCHEMA ELECTRIQUE - ELEKTRISCHE SCHEMA CODE - CODIGO DISENO			
9 2 0 8 6 6 6 9			
RIPRODUZIONE VIETATA - FORBIDDEN REPRODUCTION - REPRODUCTION INTERDITE - NACHDRUCK VERBOTEN - REPRODUCCION PROHIBIDA			

N O T E

- A : CAMME VELOCI NEI PRIMI DUE MINUTI
- B : CAMME VELOCI NEI SECONDI DUE MINUTI
- Z : PASSI DI RIFASAMENTO CAMME VELOCI
- TIMER DOTATO DI DUE INTERCAMME VELOCI AGENTI :
UNA CON TASTATORE LARGO SUL PROFILO "B" DELLA CAMMA C03 (solo per timer cod. 9120353.9)
UNA CON TELAIETTO AGENTE SUL PROFILO "B" DELLA CAMMA C04
- PASSI 6-9-12-16-20-33-35-41-44-54-57 DA 2' IN A NELLO SVOLGIMENTO DEL PROGRAMMA
PASSI DI PAREGGIO (4' B e a) IN CASO DI RIFASAMENTO CAMME VELOCI
- PASSI 3-53-55 DA 2' IN B NELLO SVOLGIMENTO DEL PROGRAMMA
PASSI DI PAREGGIO (4' A e b) IN CASO DI RIFASAMENTO CAMME VELOCI
- PASSO 39 DA 4' NELLA SVOLGIMENTO DEL PROGRAMMA
PASSO DI PAREGGIO (2' IN A) IN CASO DI RIFASAMENTO CAMME VELOCI
- PASSI 17-20-23-26-29-40-42-45-58 (CENTRIFUGA) OBBLIGO IN B

