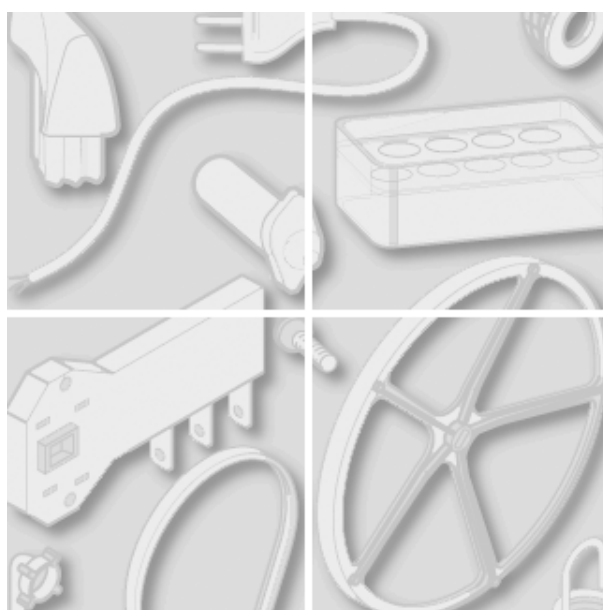


Merloni Elettrodomestici



Model type:  
WN663WO

Commercial code:  
03644

## General notes

### Technical Documentation guidelines

---

You can find herewith some generic information to simplify consulting of technical documentation:

1. Models of same range share the same exploded views, which report the richest set of spare parts:generally, a model does not necessarily have a related spare part for each particular shown on exploded views.

2. Some spare parts can not be represented directly on the exploded views (instruction booklets, specific kit, etc...). You can find those codes in the spare parts list with the same reference of particular where spares are installed or with references 099, 999. Instruction booklets, once managed, appear with 000 reference.

3. On the higher right site of each exploded view there is a serial number which indicates the beginning of the production of certain range:some models might have more than an exploded view for a given category, each distinguished by a different serial no.and linked to another spare parts list, In this case, serial no. is required to supply the right spare part code. Exploded view to be considered is the one with a more recent serial no. but previous than the one of the model that needs assistance.

4.Exploded views might require further updates even after publishing. Addition of new spares will go on following the already existing numeration references. Revision number of an exploded view is shown into last four digits of serial number into upper right hand corner.

5.The spare parts list associated to an exploded view shows related codes of spares managed for a certain model; for each spare part other informations are available:

REF: reference no of spare into a table; SUBSTITUTE: list of spare(s) which can replace a code but that keeps same functional characteristics

INDUSTRIAL CODE: list of variables of a model (shown into model label) where such spare is used; NOTICE: code of information(s) to refer to complete technical intervention, track for changes or to find correct spare part code.

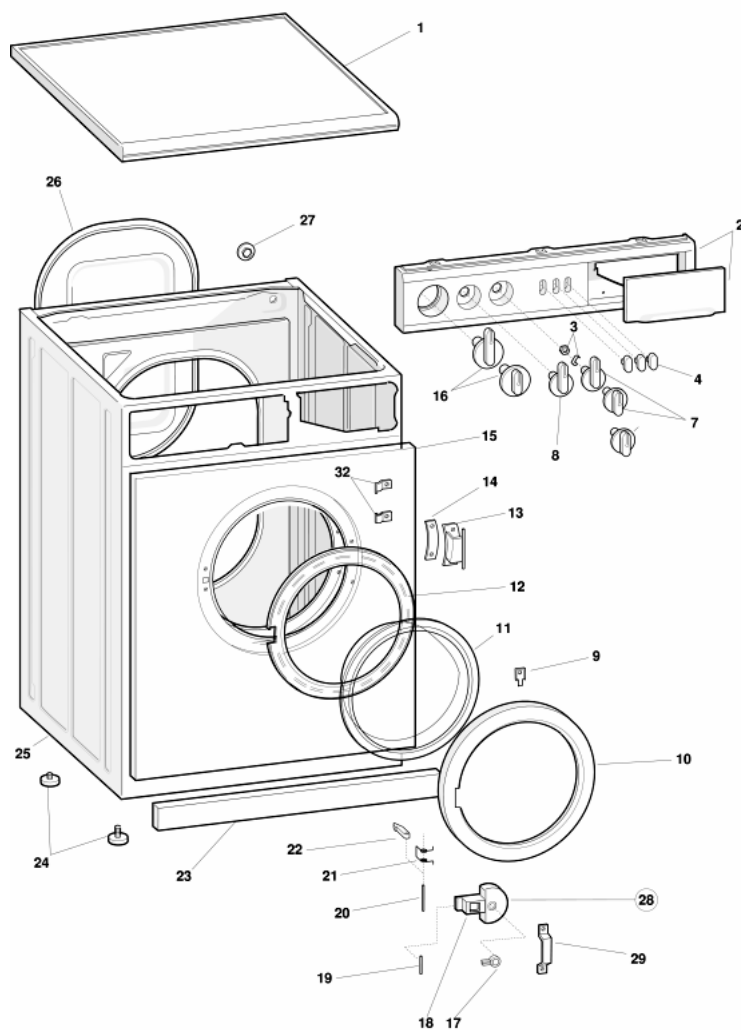
6. Some notices, into a same section are generic therefore cannot be directly linked to a spare part. In order to assist a model in the best way as possible, it is helpful to pay attention to all notices and constantly verify documentation updates

7.Technical documentation cover shows model name and its commercial codes

pdf\_tavola\_title\_ENG

cod. 1110110

Matr. 10314.0001



1110110

**Spare parts list**

Spare parts list cod. 1110110

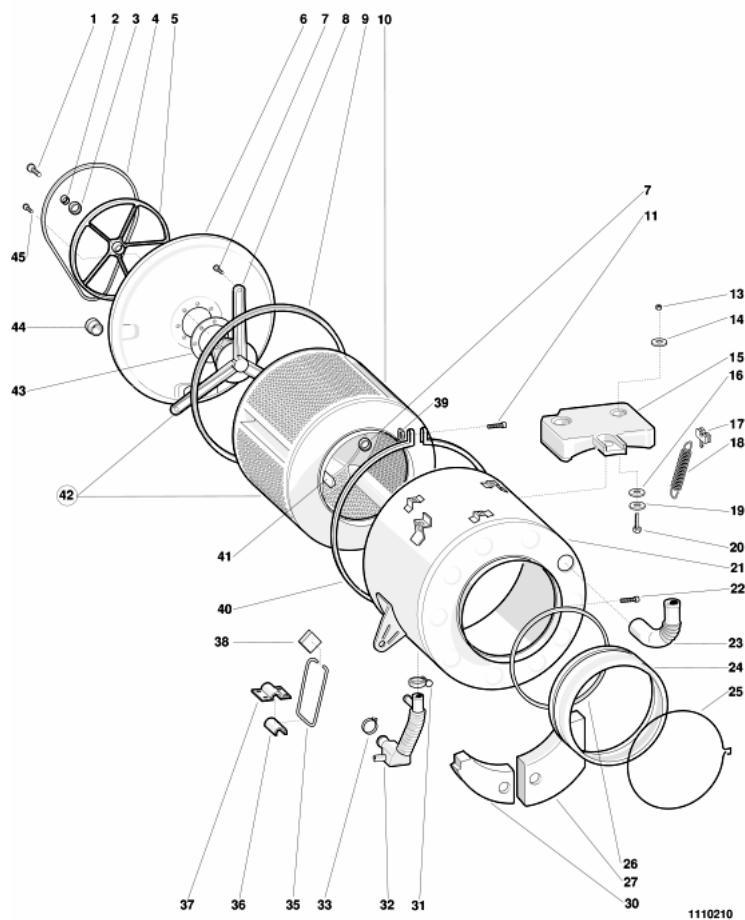
Ref.	Code	Substitute	Industrial code	Description	Notice
001	C00102510			top white 26	
002	C00034577			dashboard + handle brown	
004	C00100858			push-button knob white	
005	C00034319	1 C00104581		knob plate	
005	C00034374			temperature knob spacer	
007	C00034579			temperature knob white	
009	C00104254			door glass bracket	
010	C00101942			door frame white 27	
011	C00101297			door glass	
012	C00041056			door frame inner - white	
012	C00101948	1 C00041056		door frame inner - black	
013	C00034320			door hinge - on cabinet	
016	C00034417			timer knob white/grey l = 29 mm	
018	C00034438			door handle white 26	
020	C00105477			pivot pin	
021	C00044085			plug cabinet	
021	C00105487			spring - for door handle	
022	C00104100			hooked striker - door handle	
024	C00104610			fixed foot	
024	C00104633			foot 35 mm	
025	C00034362	1 C00037805		26 white cabinet	0111003,0111003
025	C00037805			cabinet white large porthole	0111003,0111003
026	C00101689			back panel white 26	

027	C00020664		collar for drain hose
032	C00034437	1 C00041729	top hinge block black
032	C00039299		bottom hinge block black
032	C00041729		top hinge block white
032	C00103927		hinge blocks black (pair)

pdf\_tavola\_title\_ENG

cod. 1110210

Matr. 10314.0001



**Spare parts list**

Spare parts list cod. 1110210

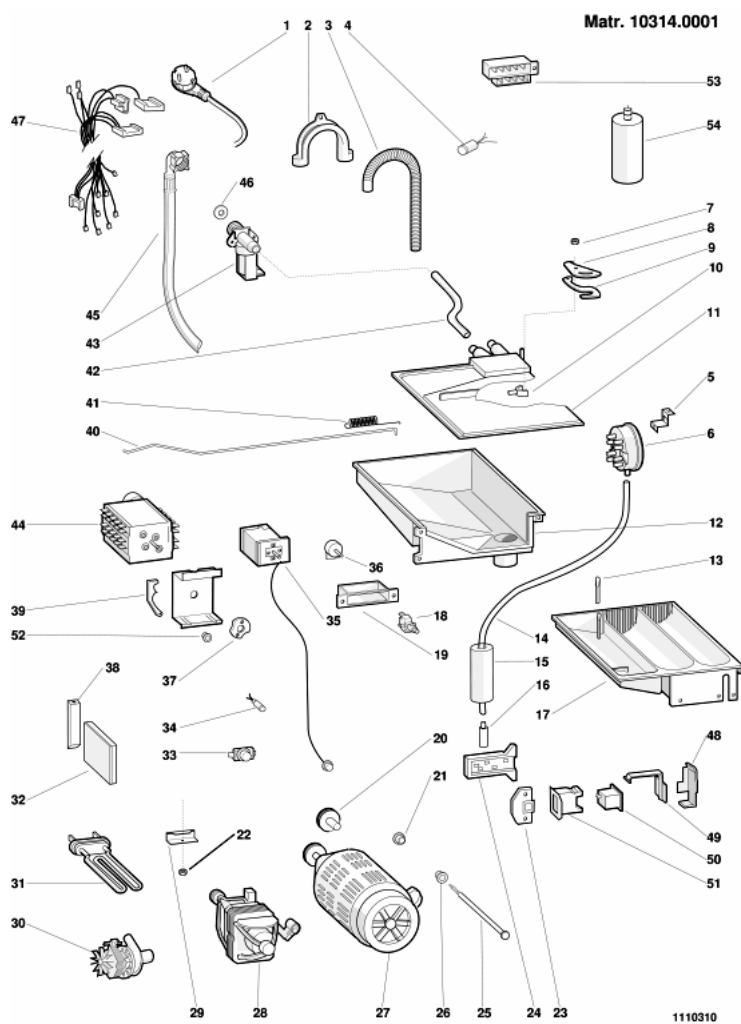
Ref.	Code	Substitute	Industrial code	Description	Notice
001	C00034335			bolt - drum pulley fixing	
002	C00034337			washer 10,5 x 21	
003	C00034336			washer d33xd9xsp2	n1040235
004	C00104498			belt 3l-513 1308 mm	
005	C00104529			drum pulley	
006	C00034546	1 C00103440		tank backplate (with heater hole)	
007	C00038552			bolt	
007	C00104425			bolts + washers	
007	C00104453			washer d. 8,4 x d.17	
008	C00036058	1 C00037028		bearing assembly (splines) 400-600-800rpm	0111009,0111003,0111003
008	C00037028			bearing assembly (splines) 400-600-800 rp	0111009,0111003,0111003
008	C00038452			bearing hub 600-800 rpm	0111009,0111003,0111003
008	C00038453	1 C00038358,1 C00089734		bearing spider - on drum	0111009,0111003,0111003
009	C00103637			seal - tankback d= 486 mm	
010	C00036059			stainless drum	0111009
010	C00038450	1 C00089735		drum + spider assembly 600-800-1000 rpm	0111009
011	C00104428			bolt m8 x 80 - tank back clamp	
015	C00104538			top counterweight	
017	C00104408			buffer - tub suspension spring	
018	C00104566			suspension spring - outer tub	
021	C00103408	1 C00037810		tub outer obg 5 kg.	
023	C00103656			hose - dispenser to tank	
024	C00103633			door bellows seal - large	

025	C00104368		clamp - door bellow seal/cabinet	
026	C00104367		clamp - door bellows seal/tank	
027	C00104544		counterbalance weight - front	
032	C00108874		hose-tub to pump	0111025
035	C00034313	1 C00104597	clamp - damper spring	
036	C00034314	1 C00104597	plastic bush-damper spring clamp	
037	C00034315	1 C00040888	saddle - damper spring clamp	
038	C00034316		rubber cap for friction pad grey	0111012
040	C00104364		clamping band - outer tank back	
042	C00034530	3 C00030679,3 C00030680,3 C00030681,1 C00036058,1	drum+hub	
043	C00103642		gasket - bearing hub	0111003
043	C00106456	1 C00103642	hub gasket	0111003
044	C00103677		grommet - adjustable thermostat	



pdf\_tavola\_title\_ENG

cod. 1110310



**Spare parts list**

Spare parts list cod. 1110310

Ref.	Code	Substitute	Industrial code	Description	Notice
001	C00022357	1 C00024521		supply cable 3x1 schuko l= 2,70 m	
003	C00108885	1 C00023860		outlet hose	
005	C00034346			bracket - pressure switch	
006	C00108946			pressure switch 2 levels 200/120 240/150	0111064
008	C00034366			diverter pivot arm	
009	C00034365			toothed moulding for diverter	
010	C00034364			diverter jet - dispenser	
011	C00034363	1 C00103210		hopper cover	
012	C00034360	1 C00103214		dispenser drawer housing	
013	C00103224			siphon - detergent drawer	
014	C00034325	1 C00103834		pressure switch hose l 560 mm	
016	C00103883			air trap cap one way 117 mm	
017	C00103223			detergent drawer	
018	C00034349			push button switch "on-off" no+no	
018	C00034376			deviator on-off nc/na	
021	C00104675			motor rubber bush	
022	C00103682			seal - heater bracket	
024	C00105105			door interlock	
026	C00104479	1 C00039660		motor mounting stud	
027	C00034585			motor 600 rpm	
029	C00034332			bracket - heater element/tub	
030	C00108264			drain pump 220-240 v.	0111025
031	C00105266	1 C00046976		heater 2000w 220v	

034	C00106826	1 C00017125	warning light	
035	C00034377		adjustable thermostat	
037	C00108240		distributor cam ce/n-cd/n	
039	C00104721		cam follower	
040	C00104720		metal operating rod	
041	C00104576		spring - dispenser diverter	
042	C00034544	1 C00033621	hose-valve to dispenser	
043	C00106660	1 C00015504	electrovalve 1 way	
044	C00034531		timer elbi 1336 910b3i ce/n	0111018
045	C00003070		mains inlet hose cold 25c 10bar 1500 mm	
046	C00005572		sealing washer-mains inlet hose	
046	C00005781		inlet hose filter	
052	C00034361		cam follower bush	
053	C00034356		terminal block	
054	C00034583	1 C00045958	capacitor 18mf	

**Notices****n1040235****Restored the fixing of the anterior counterweight with platelets inserted in the tub**

---

From the 11105.0001 registration number on the washing machines with plastic tubs produced in the Teverola factory, the fixing of the anterior counterweight is restored with platelets inserted in the tub instead of those realised with self-threading screws, the system described in Notice N1040184.

The tubs maintain the same SAT code and are provided with the following particulars:

N° 3 Screws code cod. 014342;

N° 3 Conical washer cod. 055018;

N° 3 Plain washer cod. 034336.

Whenever the necessity may arise on a tub, proceed with diverting the self-threading screws that block the anterior counterweight., as it's compulsory to execute the fixing again avoiding in time a possible loosening and thus the breaking of the tub by utilising the registered screws (cod. 014342), the conical washers (cod. 055018), the plain washers (cod. 034336) and the platelets (cod. 055038).

**0111003****INTERCHANGEABLE SPARE PARTS - NONE**

---

After moving production of clothes washers and washer dryers to other plants, some components can no longer be produced and when current stock is exhausted, they will be substituted by the following parts:

Substituted codes:

Hubs

Code 106620 Esi with code 037403 (200 mm)

Code 104502 Esi with code 037403 (200 mm)

Code 104504 Esi with code 037402 (200 mm)

Code 104508 Esi with code 104513 (210 mm)

Code 104512 Esi with code 104511 (210 mm)

Code 104510 Esi with code 104509 (210 mm)

Code 035531 Esi with code 037403 (200 mm)

Code 035263 Esi with code 037402 (200 mm)

Code 104514 remains operative (210 mm)

Code 104513 remains operative (210 mm)

Code 037029 remains operative (200 mm)

Code 037028 remains operative (200 mm)

Code 036058 remains operative (Teverola) (200 mm)

Code 104501 remains operative (Teverola) (200 mm)

Code 104511 remains operative (210 mm)

Code 037402 remains operative (200 mm)

Code 037403 remains operative (200 mm)

Code 104509 remains operative (210 mm)

Code 104503 Esi with:

Code 103441 - Enamelled tub lid

Code 037403 - Tub hub 1000/1200 rpm VT Indesit

Code 103642 - Hub gasket

Code 039635 - Screw M8X18 with loctite (6 pieces)

Code 103637 - Hub lid gasket

## CABINETS

Since for Indesit use of coloured cabinets has been small, we only have white ones in the line.

The codes for the cabinets that will permit us to cover all the various requirements are listed below.

## CLOTHES WASHER

Code 034362 ESI with code 037805

Code 034535 ESI with code 037805

Code 034597 ESI with code 037807

Code 034626 ESI with code 037803

Code 034627 ESI with code 037806

Code 034628 ESI with code 037802

Code 034631 ESI with code 037802

Code 034690 ESI with code 037805

Code 034691 ESI with code 037803

Code 034692 ESI with code 037803

Cod. 034694 ESI with code 037808

Cod. 034695 ESI with code 037803

#### WASHER-DRYER

Code 034480 ESI with code 037803

Code 034696 ESI with code 037803

Code 035140 ESI with code 037804

As for the front panels, it was decided to keep the long one only, code

034908 (034629 for the board), and the short white base, code 101744, and eliminate the colour variations.

The dual hole solenoid valve will be on the back of the cabinets and if necessary can be plugged with the solenoid-valve hole plug, code

015308.

#### TUBS

Only tubs with pressure intake hole will be kept in the line, with coupling and closed air trap; consequently they can also be used for appliances currently in production.

The substituted codes are:

Code 034527 ESI with 037809 (with pressure intake)

Code 034539 ESI with 037810 (with pressure intake)

Code 035211 ESI with 103400 \*

Code 034861 ESI with 037022 (with pressure intake)

Code 034985 ESI with 037025 (with pressure intake)

Code 103404 ESI with 037025 (with pressure intake)

Code 034918 ESI with 037811 (with pressure intake)

Code 103406 ESI with 037812 (with pressure intake) \* For the moment tubs 035211 can still be found and it is unnecessary to determine the ESI.

As for the drums the situation differs depending on the type of machine.

Clothes washer and washer-dryer 1000/1200 rpm

Code 103257 substituted by:

Code 036059 - Drum OBG

Code 037029 - Hub + crosspiece 1000/1200 WN-WD

Code 103441 - Tub lid

Code 039635 - Screw M8X18 with loctite (6 pieces)

Code 103642 - Hub gasket

Code 103637 - Tub lid gasket

Code 030679 - Screw TE 10x25 (3 pieces)

Code 030680 - Self-braking nut M10 (3 pieces)

Code 030681 - Washer TP 26 X 10.5 X 2 (3 pieces)

Code 103256 substituted by:

Code 036059 - Drum OBG

Code 037029 - Hub and crosspiece 1000/1200

Code 103441 - Tub lid

Code 039635 - Screw M8X18 with loctite (6 pieces)

Code 103642 - Hub gasket

Code 103637 - Tub lid gasket

Code 030679 - Screw TE 10X25 (3 pieces)

Code 030680 - Self-braking nut M10 (3 pieces)

Code 030681 - Washer TP 26 X 10.5 X 2 (3 pieces)

Clothes washer and Washer-dryer 800 rpm

Code 103257 Substituted by:

Code 036059 Drum OBG

Code 037028 Hub + crosspiece 800 rpm

Code 039635 - Screw M8X18 with loctite (6 pieces)

Code 103642 - Hub gasket

Code 103637 - Tub lid gasket

Code 030679 - Screw TE 10 X 25 (3 pieces)

Code 030680 - Self-braking nut M10 (3 pieces)

Code 030681 - Washer TP 26 X 10.5 X 2 (3 pieces)

Code 103256 Substituted by:

Code 036059 - Drum OBG

Code 037028 - Hub + crosspiece 800 rpm

Code 039635 - Screw M8X18 with loctite (6 pieces)

Code 103642 - Hub gasket

Code.103637 - Tub lid gasket

Code 030679 - Screw TE 10 X 25 (3 pieces)

Code 030680 - Self-braking nut M10 (3 pieces)

Code 030681 - Washer TP 26 X 10.5 X 2

Code 103255 Substituted by:

Code 036060 - Drum OBP

Code 037028 - Hub 800 rpm

Code 039635 - M8X18 screw with loctite (6 pieces)

Code 103642 - Hub gasket

Code 103637 - Tub lid gasket

Code 030679 - Screw TE 10X25 (3 pieces)

Code 030680 - Self-braking nut M10 (3 pieces)

Code 030681 - Washer TP 26 X 10.5 X 2 (3 pieces)

Code 103254 Substituted by:

Code 036059 - Drum OBG

Code 037028 - Hub + crosspiece 800 rpm

Code 039635 - Screw M8X18 with loctite (6 pieces)

Code 103642 - Hub gasket

Code 103637 - Tub lid gasket

Code 030679 - Screw 10X25 (3 pieces)

Code 030680 - Self-braking nut M10 (3 pieces)

Code 030681 - Washer TP 26 X 10.5 X 2 (3 pieces)

## **0111009**

### **NEW 45-MM HUB ON 600 - 800 RPM MODELS**

---

As from serial no. 20406.001 the following new parts have been used on all 600 and 800 rpm washing machines produced in the Teverola factory:

new 45 mm hub (code 038452), new drum spider wheel (code 038453) and a new drum unit (code 038450).

As a result of this modification the drum spider wheel and hub are supplied separately, as in the case of the models produced in the



Comunanza factory.

The new parts are not individually interchangeable with premodification parts but are interchangeable as a whole unit

## **0111012**

### **FRICION PADS WITHOUT ASBESTOS**

---

The new sliding blocks without asbestos are gradually employed in the washing-machines with serial number

21102.0001 produced in the factory in Teverola, in compliance with the new laws and in order to eliminate noises in stainless tubs.

The new brown sliding block, will still have the same code

034316 as that of the premodification grey one which will be used until complete termination of the stock.

Remember that the replacement of a sliding block necessarily requires the replacement of the other three in order to have uniformity both for the mechanical and type functions.

## **0111018**

### **MODIFIED ELBI 1136CDN AND ELBI 1336CEN TIMERS**

---

As from serial no. 30617.0001 and serial no. 30628.0001 the ELBI timer

1136 CDN code 105093 and the ELBI timer 1336 CEN code 034531 respectively were modified to resolve a problem which was occurring on some machines when taking in water: water spray was entering the softener compartment and causing the machine to start drawing from the compartment.

The new timer can be identified by the drawing number printed on its data plate (No. 16000150905) for the ELBI 1336 CEN timer and No.

16000151008 for the ELBI 1336 CEN)

As far as the Elbi 1336 CEN is concerned, the contact functions have

been modified on some steps as follows:

At steps 26-29-32 it opens on L-N and R-T and closes on contacts L-M and R-S.

The modified timers have the same sat codes as the premodification models.

The non modified timers can be used when replacing timers on washers which do not have the above problem.

## **0111019**

### **USE OF THE WHITE INNER FRAMES**

---

As from serial no. 30607.0001, the black inner frames (codes 101951 and 101948) on washers using these frames have been replaced with white inner frames (codes 041734 and 041056 respectively).

As a result of this modification the blocks (codes 039299 and 034427) have also been replaced with new white parts (code numbers 041730 and 041729).

## **0111025 HOSE CLAMP WITH SCREW FOR CONNECTOR TO PUMP**

---

To fasten the drum pipe of the pump more firmly to the pump pipe fitting, use a threaded clamp with screw to fix the part.

This part is not supplied as a spare part since it easily available on the market.

## **0111045 REPLACEMENT OF TUBS**

---

As from serial no. 00618.0001 the Air Trap on washers produced in the Teverola plant, has been moved from the tubs to the

Tub/Pump Hose.

The tubs with Air Traps are also available as spare parts for the new appliances (notice 003) in that they are fitted with an air trap coupling code 103669 and a 30 mm closed air trap cap code 041796 that permits plugging the Air Trap Hole.

The bellows used on the premodification products are as follows:

For tubs without Heater Recess in Base:

Code 108875 - Hose Tub/Pump with Air Trap Blocked Off;

Code 108874 - Hose Tub/Pump with Air Trap;

For tubs with Heater Recess in Base:

Code 108876 - Hose Tub/Pump with Air Trap;

Code 108877 - Hose Tub/Pump with Air Trap Blocked Off ;

## **0111064 MODIFIED 2-LEVEL PRESSURE SWITCH W/ PART NO. 108946**

---

## **n1040235**

### **Restored the fixing of the anterior counterweight with platelets inserted in the tub**

---

From the 11105.0001 registration number on the washing machines with plastic tubs produced in the Teverola factory, the fixing of the anterior counterweight is restored with platelets inserted in the tub instead of those realised with self-threading screws, the system described in Notice N1040184.

The tubs maintain the same SAT code and are provided with the following particulars:

N° 3 Screws code cod. 014342;

N° 3 Conical washer cod. 055018;

N° 3 Plain washer cod. 034336.

Whenever the necessity may arise on a tub, proceed with diverting the self-threading screws that block the anterior counterweight., as it's compulsory to execute the fixing again avoiding in time a possible loosening and thus the breaking of the tub by utilising the registered screws (cod. 014342), the conical washers (cod. 055018), the plain washers (cod. 034336) and the platelets (cod. 055038).

## **0111003**

### **INTERCHANGEABLE SPARE PARTS - NONE**

---

After moving production of clothes washers and washer dryers to other plants, some components can no longer be produced and when current stock is exhausted, they will be substituted by the following parts:

Substituted codes:

Hubs

Code 106620 Esi with code 037403 (200 mm)

Code 104502 Esi with code 037403 (200 mm)

Code 104504 Esi with code 037402 (200 mm)

Code 104508 Esi with code 104513 (210 mm)

Code 104512 Esi with code 104511 (210 mm)

Code 104510 Esi with code 104509 (210 mm)

Code 035531 Esi with code 037403 (200 mm)

Code 035263 Esi with code 037402 (200 mm)

Code 104514 remains operative (210 mm)

Code 104513 remains operative (210 mm)

Code 037029 remains operative (200 mm)

Code 037028 remains operative (200 mm)

Code 036058 remains operative (Teverola) (200 mm)

Code 104501 remains operative (Teverola) (200 mm)

Code 104511 remains operative (210 mm)

Code 037402 remains operative (200 mm)

Code 037403 remains operative (200 mm)

Code 104509 remains operative (210 mm)

Code 104503 Esi with:

Code 103441 - Enamelled tub lid

Code 037403 - Tub hub 1000/1200 rpm VT Indesit

Code 103642 - Hub gasket

Code 039635 - Screw M8X18 with loctite (6 pieces)

Code 103637 - Hub lid gasket

#### CABINETS

Since for Indesit use of coloured cabinets has been small, we only have white ones in the line.

The codes for the cabinets that will permit us to cover all the various requirements are listed below.

#### CLOTHES WASHER

Code 034362 ESI with code 037805

Code 034535 ESI with code 037805

Code 034597 ESI with code 037807

Code 034626 ESI with code 037803

Code 034627 ESI with code 037806

Code 034628 ESI with code 037802

Code 034631 ESI with code 037802

Code 034690 ESI with code 037805

Code 034691 ESI with code 037803

Code 034692 ESI with code 037803

Cod. 034694 ESI with code 037808

Cod. 034695 ESI with code 037803

## WASHER-DRYER

Code 034480 ESI with code 037803

Code 034696 ESI with code 037803

Code 035140 ESI with code 037804

As for the front panels, it was decided to keep the long one only, code

034908 (034629 for the board), and the short white base, code 101744, and eliminate the colour variations.

The dual hole solenoid valve will be on the back of the cabinets and if necessary can be plugged with the solenoid-valve hole plug, code 015308.

## TUBS

Only tubs with pressure intake hole will be kept in the line, with coupling and closed air trap; consequently they can also be used for appliances currently in production.

The substituted codes are:

Code 034527 ESI with 037809 (with pressure intake)

Code 034539 ESI with 037810 (with pressure intake)

Code 035211 ESI with 103400 \*

Code 034861 ESI with 037022 (with pressure intake)

Code 034985 ESI with 037025 (with pressure intake)

Code 103404 ESI with 037025 (with pressure intake)

Code 034918 ESI with 037811 (with pressure intake)

Code 103406 ESI with 037812 (with pressure intake) \* For the moment tubs 035211 can still be found and it is unnecessary to determine the ESI.

As for the drums the situation differs depending on the type of machine.

Clothes washer and washer-dryer 1000/1200 rpm

Code 103257 substituted by:

Code 036059 - Drum OBG

Code 037029 - Hub + crosspiece 1000/1200 WN-WD

Code 103441 - Tub lid

Code 039635 - Screw M8X18 with loctite (6 pieces)

Code 103642 - Hub gasket

Code 103637 - Tub lid gasket

Code 030679 - Screw TE 10x25 (3 pieces)

Code 030680 - Self-braking nut M10 (3 pieces)

Code 030681 - Washer TP 26 X 10.5 X 2 (3 pieces)

Code 103256 substituted by:

Code 036059 - Drum OBG

Code 037029 - Hub and crosspiece 1000/1200

Code 103441 - Tub lid

Code 039635 - Screw M8X18 with loctite (6 pieces)

Code 103642 - Hub gasket

Code 103637 - Tub lid gasket

Code 030679 - Screw TE 10X25 (3 pieces)

Code 030680 - Self-braking nut M10 (3 pieces)

Code 030681 - Washer TP 26 X 10.5 X 2 (3 pieces)

Clothes washer and Washer-dryer 800 rpm

Code 103257 Substituted by:

Code 036059 Drum OBG

Code 037028 Hub + crosspiece 800 rpm

Code 039635 - Screw M8X18 with loctite (6 pieces)

Code 103642 - Hub gasket

Code 103637 - Tub lid gasket

Code 030679 - Screw TE 10 X 25 (3 pieces)

Code 030680 - Self-braking nut M10 (3 pieces)

Code 030681 - Washer TP 26 X 10.5 X 2 (3 pieces)

Code 103256 Substituted by:

Code 036059 - Drum OBG

Code 037028 - Hub + crosspiece 800 rpm

Code 039635 - Screw M8X18 with loctite (6 pieces)

Code 103642 - Hub gasket

Code.103637 - Tub lid gasket

Code 030679 - Screw TE 10 X 25 (3 pieces)

Code 030680 - Self-braking nut M10 (3 pieces)

Code 030681 - Washer TP 26 X 10.5 X 2

Code 103255 Substituted by:

Code 036060 - Drum OBP

Code 037028 - Hub 800 rpm

Code 039635 - M8X18 screw with loctite (6 pieces)

Code 103642 - Hub gasket

Code 103637 - Tub lid gasket

Code 030679 - Screw TE 10X25 (3 pieces)

Code 030680 - Self-braking nut M10 (3 pieces)

Code 030681 - Washer TP 26 X 10.5 X 2 (3 pieces)

Code 103254 Substituted by:

Code 036059 - Drum OBG

Code 037028 - Hub + crosspiece 800 rpm

Code 039635 - Screw M8X18 with loctite (6 pieces)

Code 103642 - Hub gasket

Code 103637 - Tub lid gasket

Code 030679 - Screw 10X25 (3 pieces)

Code 030680 - Self-braking nut M10 (3 pieces)

Code 030681 - Washer TP 26 X 10.5 X 2 (3 pieces)

## **0111009**

### **NEW 45-MM HUB ON 600 - 800 RPM MODELS**

---

As from serial no. 20406.001 the following new parts have been used on all 600 and 800 rpm washing machines produced in the Teverola factory:

new 45 mm hub (code 038452), new drum spider wheel (code 038453) and a new drum unit (code 038450).

As a result of this modification the drum spider wheel and hub are supplied separately, as in the case of the models produced in the

Comunanza factory.

The new parts are not individually interchangeable with premodification parts but are interchangeable as a whole unit

## **0111012**

### **FRICION PADS WITHOUT ASBESTOS**

---

The new sliding blocks without asbestos are gradually employed in the washing-machines with serial number

21102.0001 produced in the factory in Teverola, in compliance with the new laws and in order to eliminate noises in stainless tubs.

The new brown sliding block, will still have the same code

034316 as that of the premodification grey one which will be used until complete termination of the stock.

Remember that the replacement of a sliding block necessarily requires the replacement of the other three in order to have uniformity both for the mechanical and type functions.

## **0111018**

### **MODIFIED ELBI 1136CDN AND ELBI 1336CEN TIMERS**

---

As from serial no. 30617.0001 and serial no. 30628.0001 the ELBI timer

1136 CDN code 105093 and the ELBI timer 1336 CEN code 034531 respectively were modified to resolve a problem which was occurring on some machines when taking in water: water spray was entering the softener compartment and causing the machine to start drawing from the compartment.

The new timer can be identified by the drawing number printed on its data plate (No. 16000150905) for the ELBI 1336 CEN timer and No. 16000151008 for the ELBI 1336 CEN)

As far as the Elbi 1336 CEN is concerned, the contact functions have

been modified on some steps as follows:

At steps 26-29-32 it opens on L-N and R-T and closes on contacts L-M and R-S.

The modified timers have the same sat codes as the premodification models.

The non modified timers can be used when replacing timers on washers which do not have the above problem.

## **0111025**

### **HOSE CLAMP WITH SCREW FOR CONNECTOR TO PUMP**

---

To fasten the drum pipe of the pump more firmly to the pump pipe fitting, use a threaded clamp with screw to fix the part.

This part is not supplied as a spare part since it easily available on the market.

## **0111064**

### **MODIFIED 2-LEVEL PRESSURE SWITCH W/ PART NO. 108946**

---







## Legend

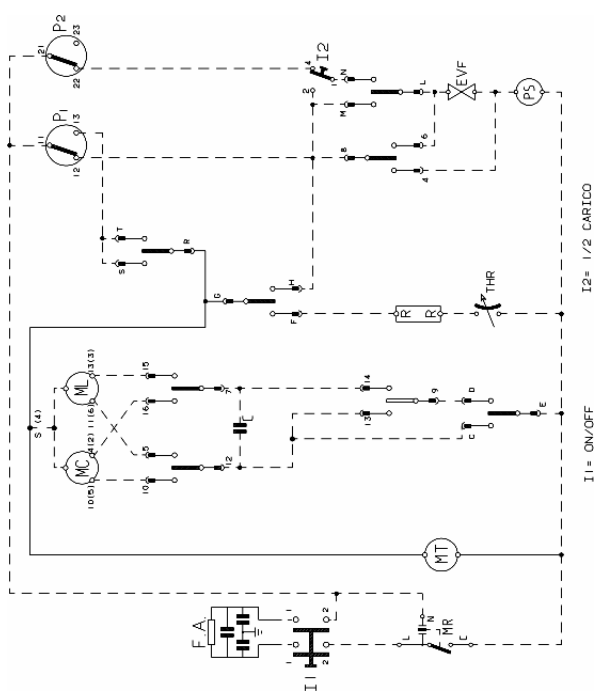
Legend: 111006a

AQS	Aquastop electrovalve	Mzbn/MTA	zbn timer motor
B	Buzzer	N	Neutral or Terminal Board
BC		NC	Spin cycle exclusion
BF	Terminal board contact, motor fan and dryer heating	P	Pressure switch
BP	Buzzer	PA	High speed potentiometer
C	Condensator	PB	Low speed potentiometer
CA	Condensator	PL	Pure Wool
DV	Switching device	PM	Motor Thermoprotector
EF/CL	Electro-Valve Cold Water / Bleach	PR	Timer programmer or Pressure switch
EF/L	Electro-Valve Cold Water / Wash	PS	Drain pump
EF/P	Electro-Valve Cold Water / Prewash	P1	1st level pressure cut-off switch
ER	Exclude Heating Element	P2	2nd level pressure cut-off switch
ET	Thermostat disactivation	R	Heating element
EV	Electrovalve	Ras/RA	Dryer heating element
EVA	Dryer electrovalve	RE	Relay
EVC	Hot water electrovalve	RR	Heating element
EVF	Elettrovalvola acqua fredda	RV	Speed regulator
EVL	Wash electrovalve	S	LED
EVP	Pre Wash electrovalve	SL	Line LED
FA	Antijamming filter	SO	Door LED
FD	Delicate drying cycle thermostat	SR	Heating LED
FE	Strong drying cycle thermostat	ST	Temperature selector
FRT	Thermofusible Heating Element	SV	Speed Selector for Spin
I	Inverter	T	Timer contacts
IA	Switch On/Off	TA	Drying timer contacts

IC	Switch N.C. - 1/2 Load	TB	Low Temperature Thermostat
ID	Switch display	TC	Spider wheel earth
IE	Water Saving Device	TFL	Flange earth
IF	Switch - Spin Reduction	TG	Main earth
IP	Door switch	TH	Thermostat
IR	Line switch	THF	Operating thermostat
IS	Water-stop	THR	Adjustable thermostat
I1..2..3..	Switches/switching devices	TH1	1st temperature thermostat
L	Line or Lamp	TH2	2nd temperature thermostat
LB	Low Level	TH3	3rd temperature thermostat
LN	Normal Level	TM	Motor earth
LS	Pilot lamp	TMB	Main cabinet earth
M	Earth-symbol	TMP	Motor thermal protector
MC	Spin cycle motor	TMS	Thermostop
MI	MOTOR WITH PULLEY	TP	Thermal protector
ML	Wash cycle motor	TPS	Drain pump earth
MO	Terminal Board	TR	Heating element earth
MP	Door dip-switch	TS	Safety thermostat
MR	Thermal Lock	TT	Timer earthing connection
MT	Timer motor	TTH	Earthing Thermostat
MV	Motor fan	TV	Tank earth
MV -Ras	Dryer heating element	ZBN	Timer

Electric schemes and links

Cod. 111007b



## Legend

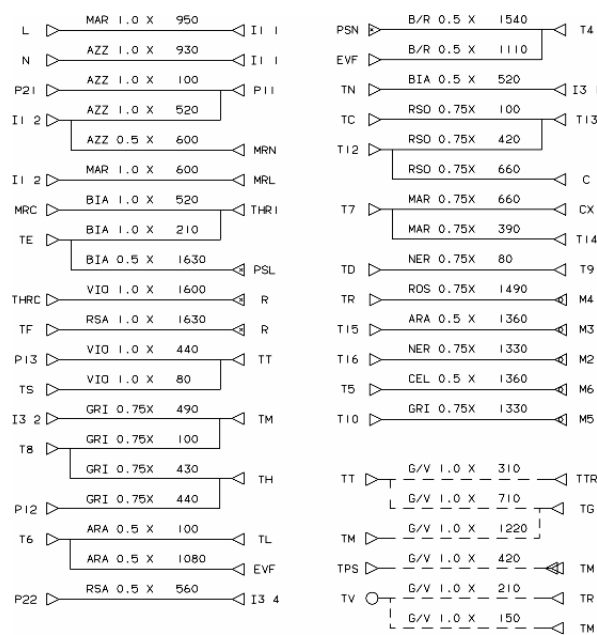
Legend: 111007b

AQS	Aquastop electrovalve	Mzbn/MTA	zbn timer motor
B	Buzzer	N	Neutral or Terminal Board
BC		NC	Spin cycle exclusion
BF	Terminal board contact, motor fan and dryer heating	P	Pressure switch
BP	Buzzer	PA	High speed potentiometer
C	Condensator	PB	Low speed potentiometer
CA	Condensator	PL	Pure Wool
DV	Switching device	PM	Motor Thermoprotector
EF/CL	Electro-Valve Cold Water / Bleach	PR	Timer programmer or Pressure switch
EF/L	Electro-Valve Cold Water / Wash	PS	Drain pump
EF/P	Electro-Valve Cold Water / Prewash	P1	1st level pressure cut-off switch
ER	Exclude Heating Element	P2	2nd level pressure cut-off switch
ET	Thermostat disactivation	R	Heating element
EV	Electrovalve	Ras/RA	Dryer heating element
EVA	Dryer electrovalve	RE	Relay
EVC	Hot water electrovalve	RR	Heating element
EVF	Elettrovalvola acqua fredda	RV	Speed regulator
EVL	Wash electrovalve	S	LED
EVP	Pre Wash electrovalve	SL	Line LED
FA	Antijamming filter	SO	Door LED
FD	Delicate drying cycle thermostat	SR	Heating LED
FE	Strong drying cycle thermostat	ST	Temperature selector
FRT	Thermofusible Heating Element	SV	Speed Selector for Spin
I	Inverter	T	Timer contacts
IA	Switch On/Off	TA	Drying timer contacts

IC	Switch N.C. - 1/2 Load	TB	Low Temperature Thermostat
ID	Switch display	TC	Spider wheel earth
IE	Water Saving Device	TFL	Flange earth
IF	Switch - Spin Reduction	TG	Main earth
IP	Door switch	TH	Thermostat
IR	Line switch	THF	Operating thermostat
IS	Water-stop	THR	Adjustable thermostat
I1..2..3..	Switches/switching devices	TH1	1st temperature thermostat
L	Line or Lamp	TH2	2nd temperature thermostat
LB	Low Level	TH3	3rd temperature thermostat
LN	Normal Level	TM	Motor earth
LS	Pilot lamp	TMB	Main cabinet earth
M	Earth-symbol	TMP	Motor thermal protector
MC	Spin cycle motor	TMS	Thermostop
MI	MOTOR WITH PULLEY	TP	Thermal protector
ML	Wash cycle motor	TPS	Drain pump earth
MO	Terminal Board	TR	Heating element earth
MP	Door dip-switch	TS	Safety thermostat
MR	Thermal Lock	TT	Timer earthing connection
MT	Timer motor	TTH	Earthing Thermostat
MV	Motor fan	TV	Tank earth
MV -Ras	Dryer heating element	ZBN	Timer

Electric schemes and links

Cod. 111007c





## Legend

Legend: 111007c

AQS	Aquastop electrovalve	Mzbn/MTA	zbn timer motor
B	Buzzer	N	Neutral or Terminal Board
BC		NC	Spin cycle exclusion
BF	Terminal board contact, motor fan and dryer heating	P	Pressure switch
BP	Buzzer	PA	High speed potentiometer
C	Condensator	PB	Low speed potentiometer
CA	Condensator	PL	Pure Wool
DV	Switching device	PM	Motor Thermoprotector
EF/CL	Electro-Valve Cold Water / Bleach	PR	Timer programmer or Pressure switch
EF/L	Electro-Valve Cold Water / Wash	PS	Drain pump
EF/P	Electro-Valve Cold Water / Prewash	P1	1st level pressure cut-off switch
ER	Exclude Heating Element	P2	2nd level pressure cut-off switch
ET	Thermostat disactivation	R	Heating element
EV	Electrovalve	Ras/RA	Dryer heating element
EVA	Dryer electrovalve	RE	Relay
EVC	Hot water electrovalve	RR	Heating element
EVF	Elettrovalvola acqua fredda	RV	Speed regulator
EVL	Wash electrovalve	S	LED
EVP	Pre Wash electrovalve	SL	Line LED
FA	Antijamming filter	SO	Door LED
FD	Delicate drying cycle thermostat	SR	Heating LED
FE	Strong drying cycle thermostat	ST	Temperature selector
FRT	Thermofusible Heating Element	SV	Speed Selector for Spin
I	Inverter	T	Timer contacts
IA	Switch On/Off	TA	Drying timer contacts

IC	Switch N.C. - 1/2 Load	TB	Low Temperature Thermostat
ID	Switch display	TC	Spider wheel earth
IE	Water Saving Device	TFL	Flange earth
IF	Switch - Spin Reduction	TG	Main earth
IP	Door switch	TH	Thermostat
IR	Line switch	THF	Operating thermostat
IS	Water-stop	THR	Adjustable thermostat
I1..2..3..	Switches/switching devices	TH1	1st temperature thermostat
L	Line or Lamp	TH2	2nd temperature thermostat
LB	Low Level	TH3	3rd temperature thermostat
LN	Normal Level	TM	Motor earth
LS	Pilot lamp	TMB	Main cabinet earth
M	Earth-symbol	TMP	Motor thermal protector
MC	Spin cycle motor	TMS	Thermostop
MI	MOTOR WITH PULLEY	TP	Thermal protector
ML	Wash cycle motor	TPS	Drain pump earth
MO	Terminal Board	TR	Heating element earth
MP	Door dip-switch	TS	Safety thermostat
MR	Thermal Lock	TT	Timer earthing connection
MT	Timer motor	TTH	Earthing Thermostat
MV	Motor fan	TV	Tank earth
MV -Ras	Dryer heating element	ZBN	Timer