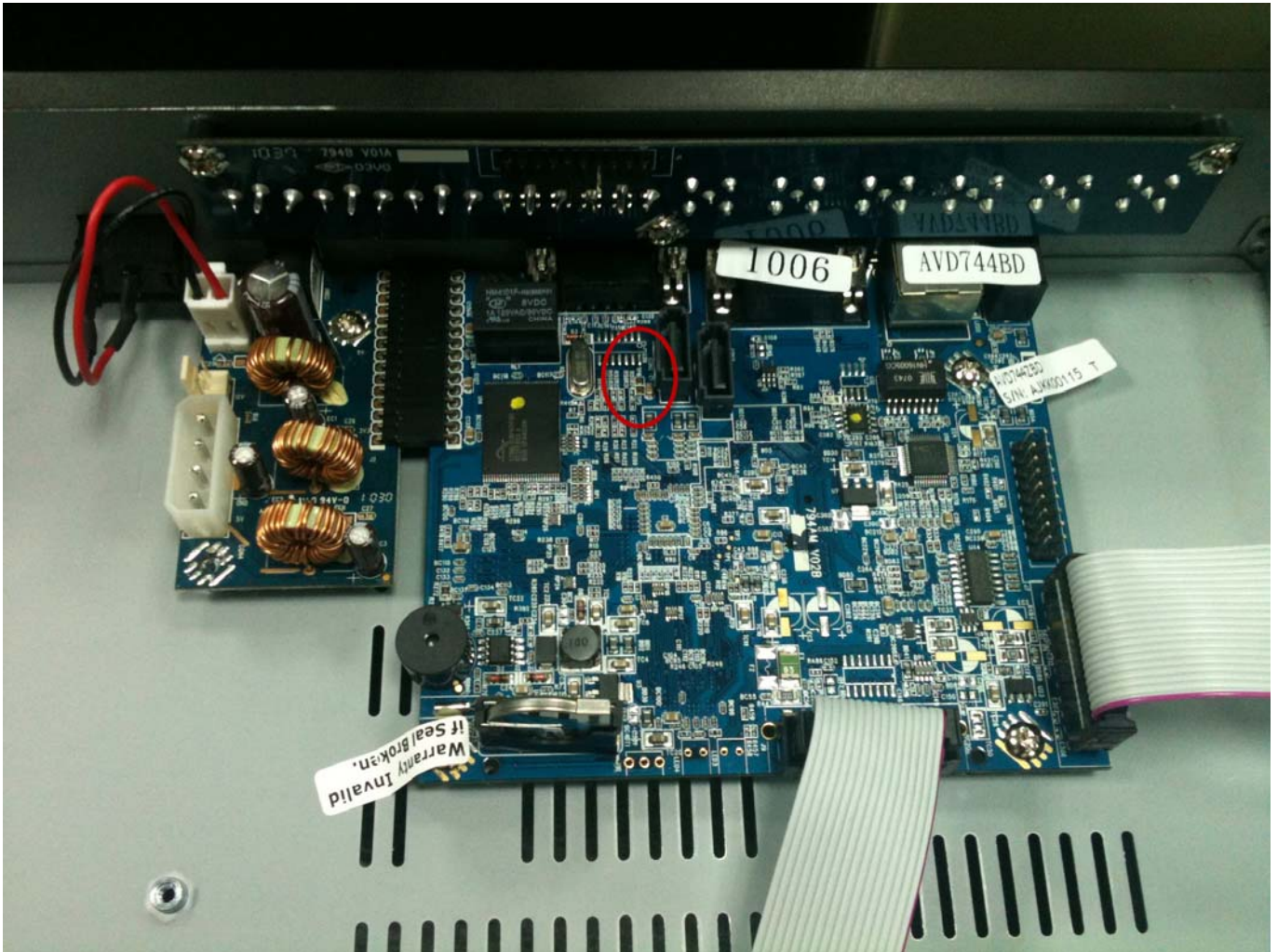
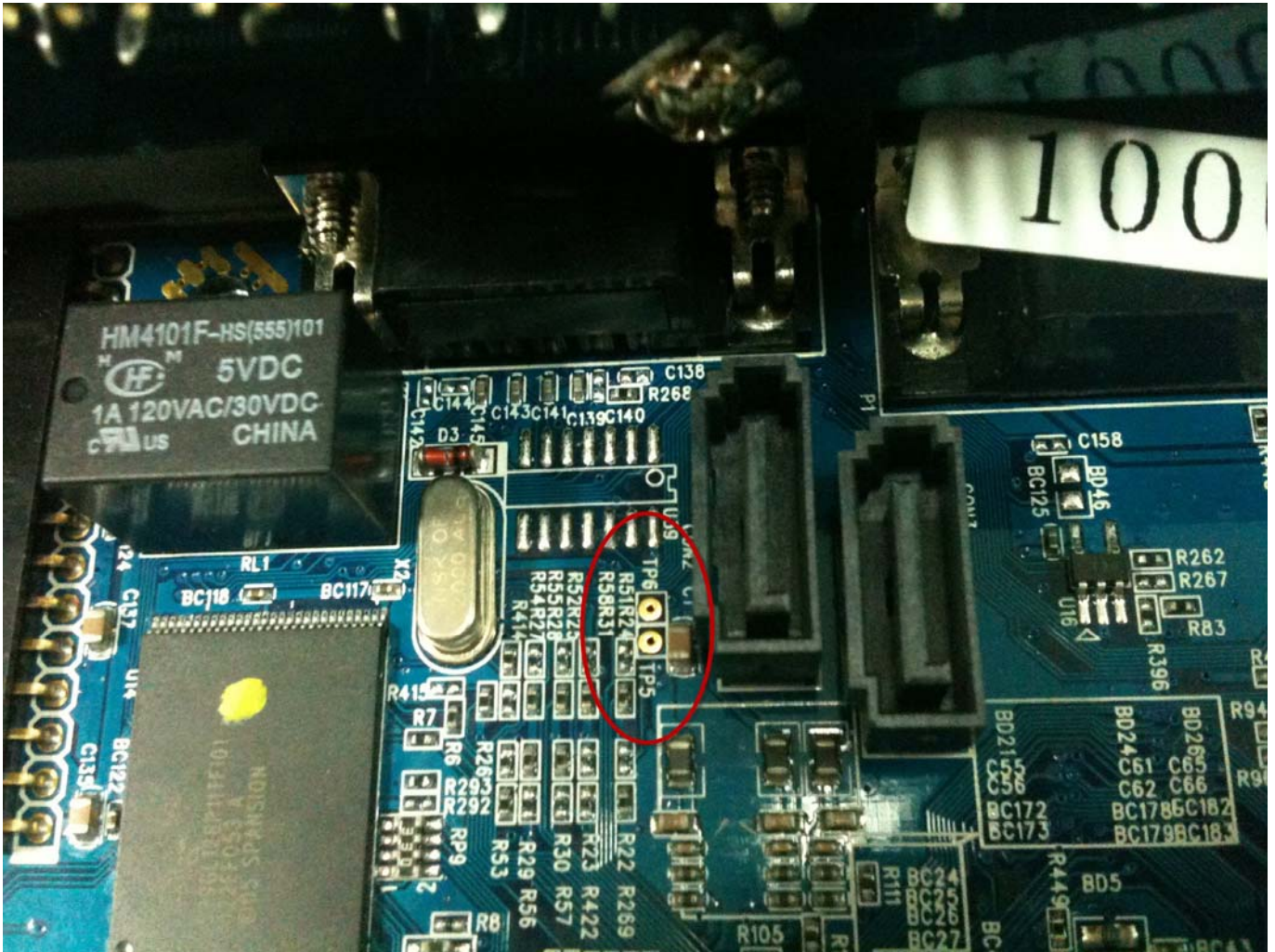


STEP1: Remove the DVR cover and find the chip resistor to reset the hardware (next to the SATA Cable)



STEP2: The chip resistor is located on TP5 and TP6, as indicated below:



STEP3: Disconnect the DVR power. Then, make the chip resistor short-circuited with a conductive object (such as forceps) as indicated below, and re-connect the power. Remove the conductive object when you hear a short beep sound, and wait till the DVR reboots.



