

Box Properties

--Description--

Name:

Type: Vented Box

Shape: Prism, square

--Box Parameters--

Vb = 56,87 liters

V(total) = 60,63 liters

Fb = 40, Hz

F3 = 41,75 Hz

Fill = normal

--Vents--

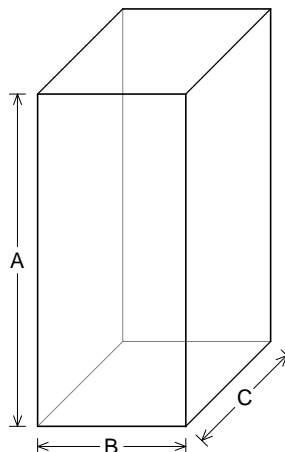
No. of Vents = 1

Vent shape = round

Vent ends = one flush

Dv = 110, mm

Lv = 204,3 mm



--External Dimensions--

A = 720, mm

B = 321, mm

C = 347, mm

--Internal Dimensions--

A = 684, mm

B = 285, mm

C = 311, mm

--Wall Thickness--

Front = 18, mm

Side = 18, mm

Driver Properties

--Description--

Name: BC2520

Type: Standard one-way driver

Company: SAL

Piston: Paper

Voice Coil: Alu

--Configuration--

No. of Drivers = 1

--Mechanical Parameters--

Fs = 36, Hz

Qms = 5,15

Vas = 89, liters

Cms = 0,503 mm/N

Mms = 38,86 g

Rms = 1,707 kg/s

Xmax = 6, mm

Xmech = 9, mm

P-Dia = 21,2 cm

Sd = 353, sq.cm

P-Vd = 0,212 liters

--Electrical Parameters--

Qes = 0,62

Re = 3,9 ohms

Le = 1,64 mH

Z = 4,68 ohms

BL = 7,436 Tm

Pe = 80, watts

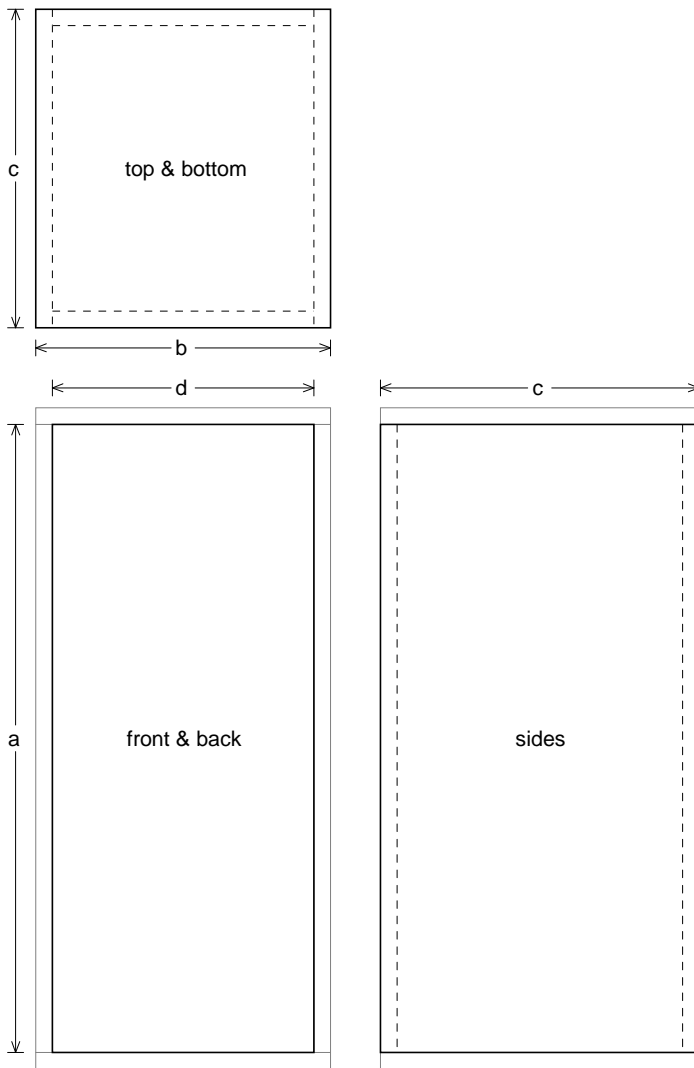
--Electromech. Parameters--

Qts = 0,553

no = 0,646 %

1-W SPL = 90,25 dB

2.83-V SPL = 93,37 dB



Box Parts

Box Shape: Square Prism

1 Top, 1 Bottom: depth (c) = 347, mm
width (b) = 321,, thickness = 18, mm

1 Front, 1 Back: height (a) = 684, mm
width (d) = 285,, thickness = 18, mm

2 Sides: height (a) = 684, mm
depth (c) = 347,, thickness = 18, mm

--Driver Mounting--
Mounting: Flush

--Vent Parts--

1 Duct: outside diameter (e) = 116,4 mm
inside diameter (g) = 110, mm
length (h) = 204,3 mm

