

Box Properties

--Description--

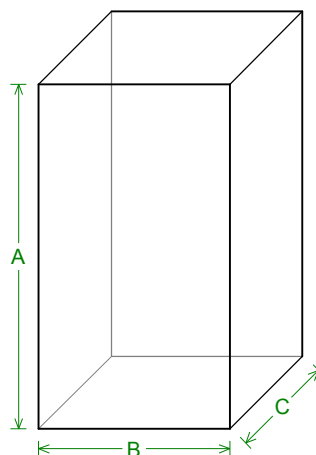
Name: Reflex
Type: Vented Box
Shape: Prism, square

--Box Parameters--

Vb = 10,03 liters
V(total) = 10,4 liters
Fb = 65, Hz
F3 = 70,34 Hz
Fill = normal

--Vents--

No. of Vents = 1
Vent shape = round
Vent ends = one flared
Dv = 46, mm
Lv = 84,76 mm



--External Dimensions--

A = 415, mm
B = 230, mm
C = 165, mm

--Internal Dimensions--

A = 385, mm
B = 200, mm
C = 135, mm

--Wall Thickness--

Front = 15, mm
Side = 15, mm

Driver Properties

--Description--

Name: HA171544-582
Type: Standard one-way driver
Company: H2000
Piston: Impregnated papier
Dust Cap: PE
Frame: Steel
Voice Coil: 25mm
Magnet: ferrit

--Configuration--

No. of Drivers = 1

--Mechanical Parameters--

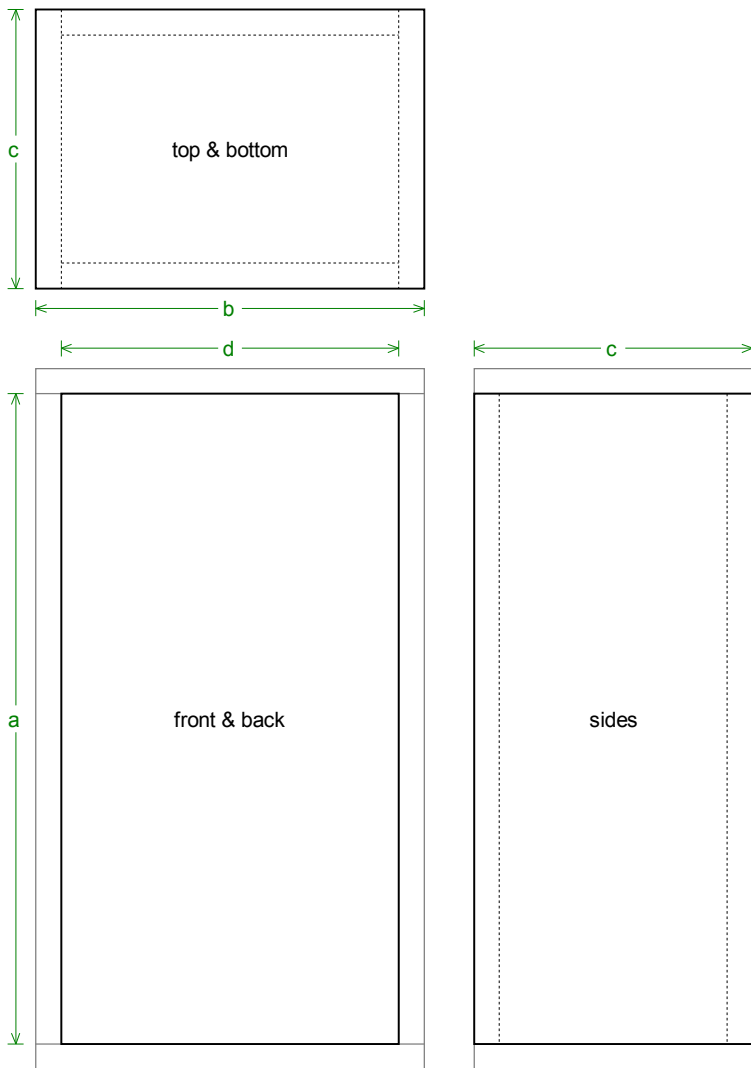
Fs = 47,52 Hz
Qms = 2,454
Vas = 26,98 liters
Cms = 1,09 mm/N
Mms = 10,29 g
Rms = 1,252 kg/s
Xmax = 4,5 mm
Xmech = 6, mm
P-Dia = 129,6 mm
Sd = 132, sq.cm
P-Vd = 0,0594 liters

--Electrical Parameters--

Qes = 0,537
Re = 6,1 ohms
Le = 0,424 mH
Z = 7,32 ohms
BL = 5,908 Tm
Pe = 55, watts

--Electromech. Parameters--

Qts = 0,44
no = 0,52 %
1-W SPL = 89,31 dB
2.83-V SPL = 90,48 dB



Box Parts

Box Shape: Square Prism

- 1 Top, 1 Bottom: depth (c) = 165, mm
width (b) = 230, mm, thickness = 15, mm
- 1 Front, 1 Back: height (a) = 385, mm
width (d) = 200, mm, thickness = 15, mm
- 2 Sides: height (a) = 385, mm
depth (c) = 165, mm, thickness = 15, mm

--Driver Mounting--
Mounting: Front

--Vent Parts--

- 1 Duct: outside diameter (e) = 52,35 mm
inside diameter (g) = 46, mm
length (h) = 84,76 mm

--Misc Objects Inside or Part of Box--

Object: merevitö

No. of Objects: 1

Volume: 0,0304 liters (reduces box)

Shape: Square Prism

A = 135, mm

B = 15, mm

C = 15, mm

