

Box Properties

--Description--

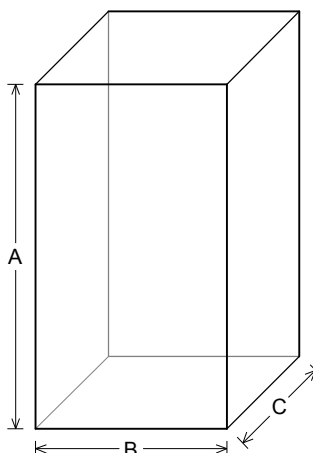
Name: Reflex
Type: Vented Box
Shape: Prism, square

--Box Parameters--

Vb = 10,02 liters
V(total) = 10,4 liters
Fb = 60, Hz
F3 = 67,92 Hz
Fill = normal

--Vents--

No. of Vents = 1
Vent shape = round
Vent ends = one flared
Dv = 44, mm
Lv = 95,6 mm



--External Dimensions--

A = 415, mm
B = 230, mm
C = 165, mm

--Internal Dimensions--

A = 385, mm
B = 200, mm
C = 135, mm

--Wall Thickness--

Front = 15, mm
Side = 15, mm

Driver Properties

--Description--

Name: HA181544-620
Type: Standard one-way driver
Company: H2000
Piston: Impregnated papier
Dust Cap: Papier
Frame: Steel
Voice Coil: 25mm
Magnet: ferrit

--Configuration--

No. of Drivers = 1

--Mechanical Parameters--

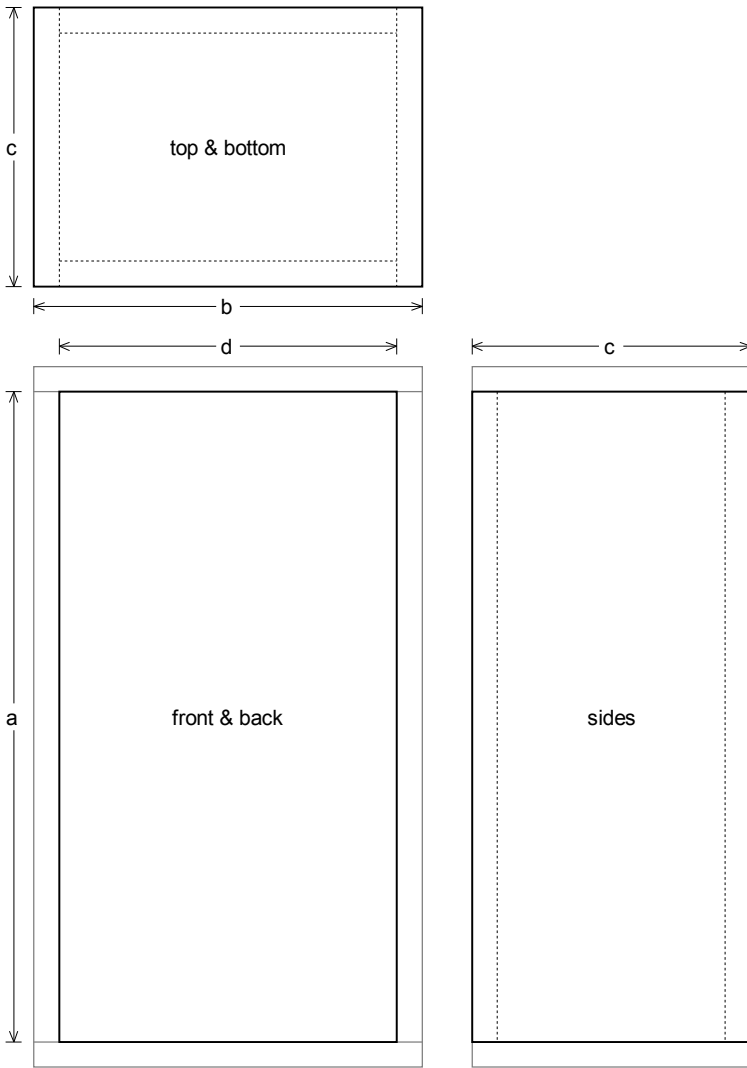
Fs = 46,59 Hz
Qms = 2,436
Vas = 26,71 liters
Cms = 1,079 mm/N
Mms = 10,82 g
Rms = 1,3 kg/s
Xmax = 4,5 mm
Xmech = 6, mm
P-Dia = 129,6 mm
Sd = 132, sq.cm
P-Vd = 0,0594 liters

--Electrical Parameters--

Qes = 0,559
Re = 6,2 ohms
Le = 0,429 mH
Z = 7,44 ohms
BL = 5,927 Tm
Pe = 55, watts

--Electromech. Parameters--

Qts = 0,455
no = 0,466 %
1-W SPL = 88,83 dB
2.83-V SPL = 89,94 dB



Box Parts

Box Shape: Square Prism

- 1 Top, 1 Bottom: depth (c) = 165, mm
width (b) = 230,, thickness = 15, mm
- 1 Front, 1 Back: height (a) = 385, mm
width (d) = 200,, thickness = 15, mm
- 2 Sides: height (a) = 385, mm
depth (c) = 165,, thickness = 15, mm

--Driver Mounting--
Mounting: Front

--Vent Parts--

- 1 Duct: outside diameter (e) = 50,35 mm
inside diameter (g) = 44, mm
length (h) = 95,6 mm

--Misc Objects Inside or Part of Box--

Object: merevitö

No. of Objects: 1

Volume: 0,0304 liters (reduces box)

Shape: Square Prism

A = 135, mm

B = 15, mm

C = 15, mm

