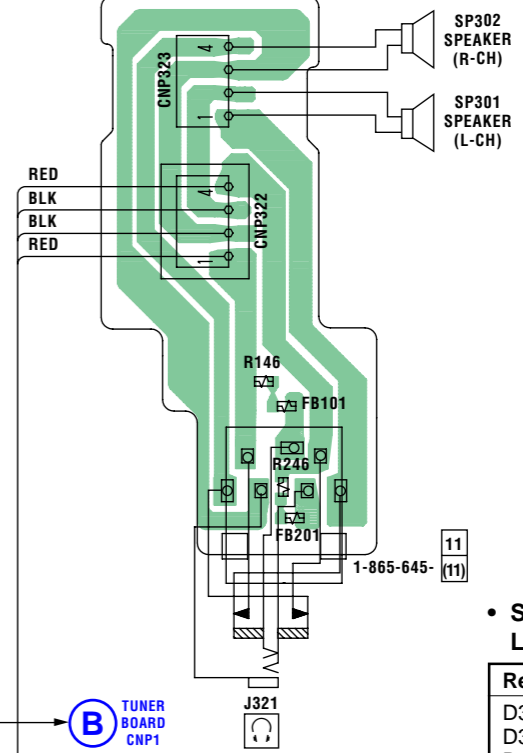
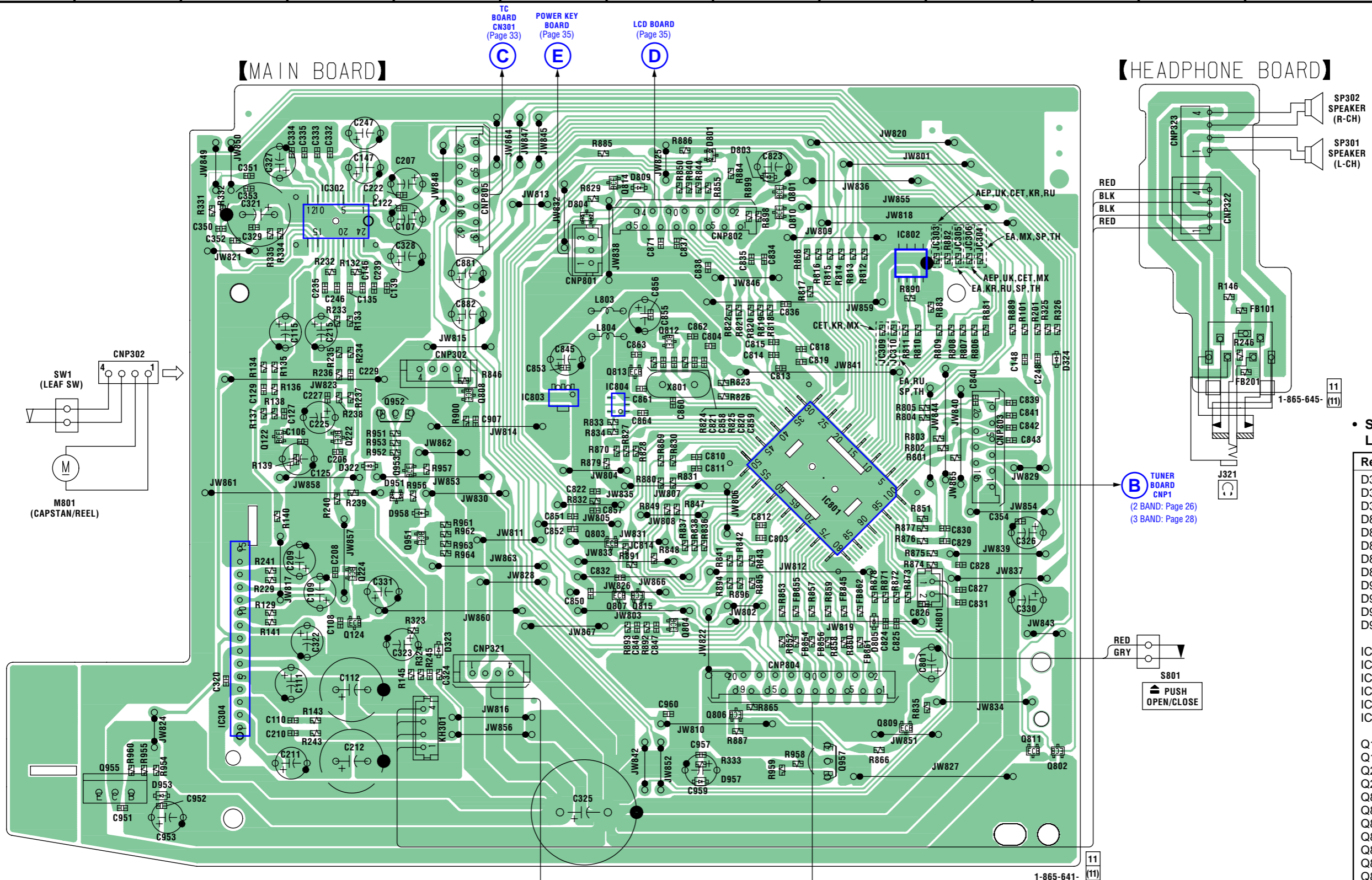


1 2 3 4 5 6 7 8 9 10 11 12 13

A  
B  
C  
D  
E  
F  
G  
H  
I

【MAIN BOARD】

【HEADPHONE BOARD】



• Semiconductor Location

Ref. No.	Location
D322	E-4
D323	G-5
D324	D-11
D801	B-7
D803	B-8
D804	B-6
D805	G-9
D809	B-7
D951	E-5
D953	H-2
D957	H-8
D958	E-5
IC302	B-4
IC304	G-3
IC801	E-9
IC802	C-9
IC803	D-6
IC804	D-7
Q122	E-3
Q124	F-4
Q222	E-4
Q224	F-4
Q801	B-8
Q802	H-11
Q803	F-6
Q804	F-7
Q806	G-8
Q807	F-7
Q808	D-5
Q809	G-9
Q810	C-8
Q811	G-11
Q812	D-7
Q813	D-7
Q814	B-7
Q815	F-7
Q951	E-5
Q952	D-5
Q953	E-5
Q955	H-2
Q957	H-9

**B** TUNER BOARD  
CNP1  
(2 BAND: Page 26)  
(3 BAND: Page 28)

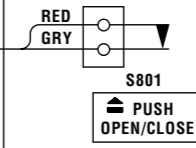
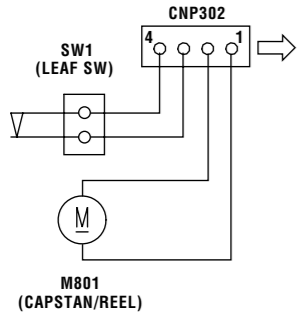
**F** POWER BOARD  
CNP321  
(Page 37)

**A** MP3-CD BOARD  
CNP702  
(Page 24)

**C** TC BOARD  
CNP301  
(Page 33)

**E** POWER KEY BOARD  
(Page 35)

**D** LCD BOARD  
(Page 35)



1-865-641- (11)

6-12. SCHEMATIC DIAGRAM – MAIN SECTION (1/2) – • See page 42 for IC Block Diagram.

