

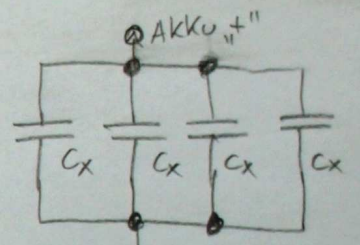
AKKU "+"

Fuse: 100 A (normal)

36V DC

AKKU "-"

IC₂-IC₃: IR2112S
 V_{oEs}: max. 600V
 I_{out}: ± 200/420mA
 V_{out}: 10-20V
 t_{on/off}: 125/105ns



AKKU "-"
 C_x: ? → (PWM frequenz löst fügen)
 Low ESR

IC₁: ACS 758 ECB-200B (PFF)
 I_p: 200/1200A
 0,1mΩ ~ 10mV/A
 2,5V ± 10mV/A

$$R_x = \frac{20 - 14,3}{0,2} = \sim 30\Omega$$

D_{S1}-D_{S8}: 1,5KE 15A (1N6275A)
 V_{BR}: 14,3-15,8V

T₁-T₄: IRFP4468
 R_{DS(on)max}: 2,6mΩ
 I_o: 135/1120A
 V_{DSSmax}: 100V

D₁-D₈: FFPT 30VA60S
 T_{rr} < 90ns
 V_F < 2,2V
 I_F: 30/180A