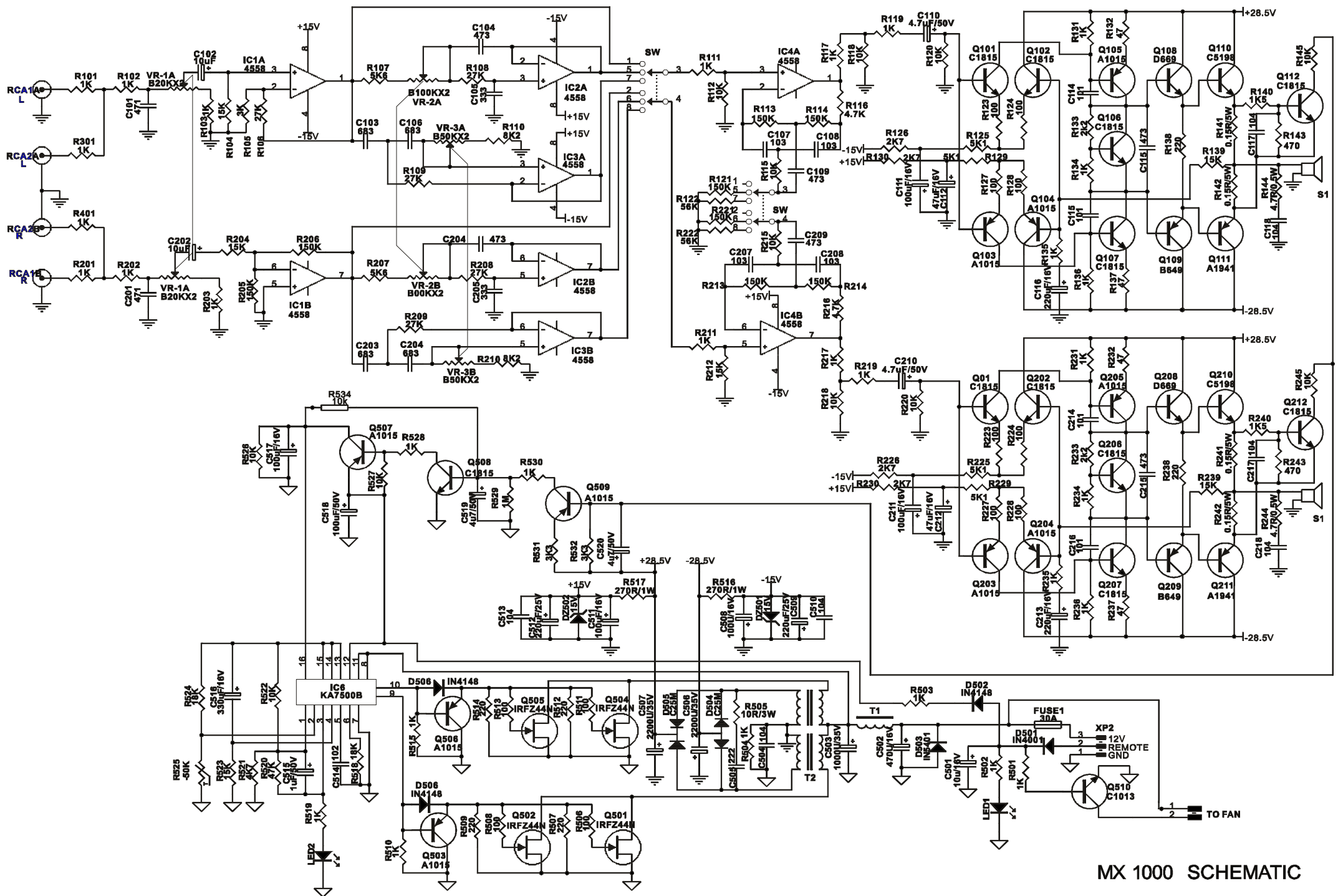


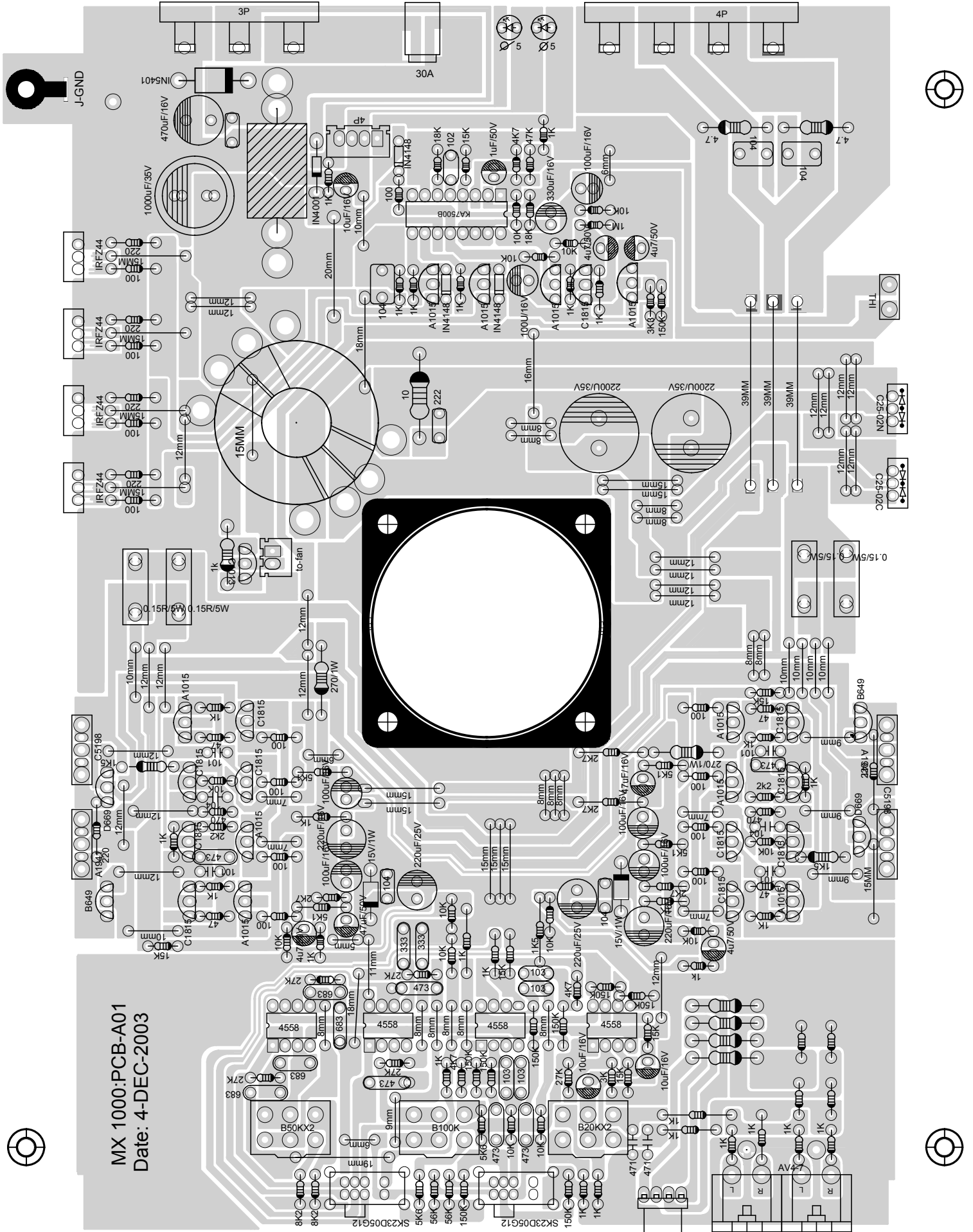


1000



MX 1000 SCHEMATIC

MX 1000:PCB-A01
Date: 4-DEC-2003



MX 1000 compared to MX 2000:

- a) 2x Toshiba A1941 for power audio amplifier section (no change)
- b) 2x Toshiba C5198 for power audio amplifier section (no change)
- c) 4x IRFZ 44 N for the power supply (no change)
- d) Simple Transistor circuit (Q510 and R501 added) to switch the fan
- e) Transformer: wire turn ratio changed, lower secondary output voltage
MX 1000 / 2000
Primary side 6 / 6
Secondary side 12 / 13
- f) Side covers made out of metal instead aluminium
- g) Top covers made out of metal instead aluminium

MX 3000 compared to MX 4000:

- a) 2x Toshiba A1695 for power audio amplifier section (no change)
- b) 2x Toshiba C4468 for power audio amplifier section (no change)
- c) 4x IRFZ 44 N instead of IRFZ1010E for the power supply (change)
- d) Simple Transistor circuit (Q510 and R501 added) to switch the fan
- e) Transformer: wire turn ratio changed, lower secondary output voltage
MX 3000 / 4000
Primary side 6 / 6
Secondary side 11 / 12
- f) Side covers made out of metal instead aluminium
- g) Top covers made out of metal instead aluminium

Spare part list

Product Name: Car Amplifier
Brand Name : Mac Audio

Model No. : MX 1000

| Serial number | Types | Description of components | Comment | Quantity | Unit | Components |
|----------------------------|----------------------|---------------------------|----------------------------|--------------|------|--|
| 001 | PCB | PCB | MX 1000:PCB-A02 | 1 | PC | |
| 002 | Safety components | Coils | Φ36 | 1 | PC | T2 |
| | | OSC Coils | Φ9 | 1 | PC | T1 |
| | | Fuse | 30A | 1 | PC | FUSE1 |
| | | Fuse Holder | one way (thiner) | 1 | PC | |
| 003 | Inserting components | RCA socket | AV4-7 | 1 | PC | RCA |
| | | Terminals | Three way | 1 | PC | OUT1 |
| | | | Four way | 1 | PC | OUT2 |
| | | Cooling Fan | 50×50×10mm 0.10A 12V | 1 | PC | |
| 004 | IC | IC | 4558 | 4 | PCS | IC1, IC2, IC3, IC4 |
| | | | KA7500B | 1 | PC | IC5 |
| | | | MOSFET | IRFZ44 | 4 | PCS |
| 005 | Transistor | Triodes | A1015 | 10 | PCS | Q103, Q104, Q105, Q203, Q204, Q205, Q503, Q506, Q507, Q509 |
| | | | C1815 | 11 | PCS | Q101, Q102, Q106, Q107, Q112, Q201, Q202, , Q206, Q207, Q212, Q508 |
| | | | A1013 | 1 | PCS | Q510 |
| | | | B649 | 2 | PCS | Q109, Q209 |
| | | | D669 | 2 | PCS | Q108, Q208 |
| | | | A1941 | 2 | PCS | Q111, Q211 |
| | | | C5198 | 2 | PCS | Q110, Q210 |
| | | | Schottky Barrier Rectifier | C25-02N | 1 | PC |
| | | C25-02C | | 1 | PC | D505 |
| | | Rectifier Diodes | IN5401 | 1 | PC | D503 |
| | | | IN4001 | 1 | PC | D501 |
| | | Switch Diodes | IN4148 | 3 | PCS | D502, D506, D507 |
| | | LED | Φ5 Red | 1 | PC | LED1 |
| | | | Φ5 Green | 1 | PC | LED2 |
| Voltage Stabilizing Diodes | 15V/1W | 2 | PCS | DZ501, DZ502 | | |

Spare part list

Product Name: Car Amplifier
Brand Name : Mac Audio

Model No. : MX 1000

| Serial number | Types | Description of components | Comment | Quantity | Unit | Components | |
|---------------|-----------|---------------------------|----------------|----------------------|------|--|------|
| 006 | Resistors | Thermal Resistors | RTH-50K | 1 | PC | R525 | |
| | | | RTX-5W-0.15Ω | 4 | PCS | R141, R142, R241, R242 | |
| | | | RTX-1W-10Ω | 1 | PC | R505 | |
| | | | RTX-1W-270Ω | 2 | PCS | R516, R517 | |
| | | | RTX-1/2W-4.7Ω | 2 | PCS | R144, R244 | |
| | | | RTX-1/4W-1.5KΩ | 2 | PCS | R140, R240 | |
| | | | RTX-1/8W-47Ω | 4 | PCS | R132, R137, R232, R237 | |
| | | | RTX-1/8W-100Ω | 13 | PCS | R123, R124, R127, R128, R223, R224, R227, R228, R503, R506, R508, R511, R513 | |
| | | | RTX-1/8W-220Ω | 6 | PCS | R138, R238, R507, R509, R512, R514 | |
| | | | RTX-1/8W-470Ω | 2 | PCS | R143, R243 | |
| | | | RTX-1/8W-1KΩ | 29 | PCS | R101, R102, R103, R111, R117, R119, R131, R134, R135, R136, R201, R202, R203, R211, R219, R231, R234, R236, R301, R335, R401, R502, R504, R510, R515, R519, R528, R530, R501 | |
| | | | RTX-1/8W-1.5KΩ | 1 | PC | R217 | |
| | | | RTX-1/8W-2KΩ | 1 | PC | R209 | |
| | | | RTX-1/8W-2.2KΩ | 2 | PCS | R133, R233 | |
| | | | RTX-1/8W-2.7KΩ | 4 | PCS | R126, R130, R226, R230 | |
| | | | RTX-1/8W-3KΩ | 1 | PC | R105 | |
| | | | RTX-1/8W-3.3KΩ | 1 | PC | R531 | |
| | | | RTX-1/8W-4.7KΩ | 3 | PCS | R116, R216, R521 | |
| | | | RTX-1/8W-5.1KΩ | 4 | PCS | R125, R129, R225, R229 | |
| | | | RTX-1/8W-5.6KΩ | 2 | PCS | R107, R207 | |
| | | | RTX-1/8W-8.2KΩ | 2 | PCS | R110, R210 | |
| | | | RTX-1/8W-10KΩ | 13 | PCS | R115, R118, R112, R120, R215, R218, R145, R220, R245, R522, R526, R527, R534 | |
| | | | RTX-1/8W-15KΩ | 6 | PCS | R104, R139, R204, R212, R239, R523 | |
| | | | RTX-1/8W-18KΩ | 2 | PCS | R518, R524 | |
| | | | RTX-1/8W-27KΩ | 4 | PCS | R106, R108, R109, R208 | |
| | | | RTX-1/8W-47KΩ | 1 | PC | R520 | |
| | | | RTX-1/8W-56KΩ | 2 | PCS | R122, R222 | |
| | | | RTX-1/8W-150KΩ | 5 | PCS | R113, R114, R121, R206, R221 | |
| | | | RTX-1/8W-150KΩ | 4 | PCS | R205, R213, R214, R532 | |
| | | | RTX-1/8W-1M | 1 | PC | R529 | |
| | | | Trimmers | 1710-15-axis-B20KΩ×2 | 1 | PC | VR-1 |
| | | | | 1710-15-axis-B50KΩ×2 | 1 | PC | VR-3 |
| | | | | 1710-15-axis-B100KΩ | 1 | PC | VR-2 |

Spare part list

Product Name: Car Amplifier
Brand Name : Mac Audio

Model No. : MX 1000

| Serial number | Types | Description of components | Comment | Quantity | Unit | Components |
|---------------|-----------------|-----------------------------|-----------------------|------------------|------------|--|
| 007 | capacitors | Electrolytic capacitors | CD11-50V-1uF(85□) | 1 | PC | C515 |
| | | | CD11-50V-4.7uF(85□) | 4 | PCS | C110, C210, C519, C520 |
| | | | CD11-16V-10uF(85□) | 3 | PCS | C102, C202, C501 |
| | | | CD11-16V-47uF(85□) | 2 | PC | C112, C212 |
| | | | CD11-16V-100uF(85□) | 6 | PCS | C111, C211, C508, C511, C517,CC518 |
| | | | CD11-16V-220uF(85□) | 2 | PCS | C113, C213 |
| | | | CD11-25V-220uF(85□) | 2 | PCS | C509, C512 |
| | | | CD11-16V-330uF(85□) | 1 | PC | C516 |
| | | | CD11-25V-470uF(105□) | 1 | PC | C502 |
| | | | CD11-35V-1000uF(105□) | 1 | PC | C503 |
| | | CD11-35V-2200uF(105□) | 2 | PCS | C306, C307 | |
| | | Ceramic Electric Capacitors | CCX-63V-101 | 6 | PCS | C114, C116, C214, C216 |
| | | | CCX-63V-471 | 2 | PCS | C101, C201 |
| | | Polyester Capacitors | CL-100V-102 | 1 | PC | C514 |
| | | | CL-100V-222 | 1 | PC | C505 |
| | | | CL-100V-103 | 2 | PCS | C207, C208 |
| | | | CL-100V-103 | 2 | PCS | C107, C108 |
| | | | CL-100V-333 | 2 | PCS | C105, C205 |
| | | | CL-100V-473 | 3 | PCS | C109, C115, C209 |
| | | | CL-100V-473 | 3 | PCS | C104, C204, C215 |
| | | | CL-100V-683 | 3 | PCS | C103, C106, C206 |
| | | | CL-100V-683 | 1 | PC | C203 |
| | | | CL-100V-104 | 2 | PCS | C510, C513 |
| CL-100V-104 | 3 | | PCS | C118, C218, C504 | | |
| CL-100V-104 | 2 | PCS | C117, C217 | | | |
| 008 | Connecting line | J line(Φ0.65mm) | 5mm | 1 | PC | J13 |
| | | | 6mm | 3 | PCS | J8, J24, J67 |
| | | | 7mm | 4 | PCS | J22, J23, J35, J36 |
| | | | 8mm | 15 | PCS | J2, J3, J4, J5, J6, J11, J32, J33, J34,J37, J38, J51, J52, J55, J56 |
| | | | 9mm | 4 | PCS | J7, J43, J44, J45 |
| | | | 10mm | 7 | PCS | J14, J19, J39, J40, J41, J42,J70 |
| | | | 11mm | 1 | PC | J12 |
| | | | 12mm | 22 | PCS | J1,J15,J16,J17,J18,J20,J21,J25,J26,J47,J72,J74, J48,J49,J50,J61,J62,J63,J64,J65,J66,J71, |
| | | | 15mm | 12 | PCS | J27,J28,J29,J30,J31,J46,J53,J54,J73,J75,J76,J77 |
| | | | 16mm | 1 | PC | J57 |
| | | | 18mm | 2 | PCS | J10, J68 |
| | | | 19mm | 1 | PC | J9 |
| | | | 20mm | 1 | PC | J69 |

Spare part list

Product Name: Car Amplifier
Brand Name : Mac Audio

Model No. : MX 1000

| Serial number | Types | Description of components | Specifications & Model No. | Quantity | Unit | components / Remark | |
|-------------------|-------------|------------------------------|----------------------------|----------|------|---------------------|--|
| 009 | Hardware | Metal plate | 39mm | 3 | PCS | J58, J59, J60 | |
| | | Alumminum Decorated covering | | 1 | PC | | |
| | | Alumminum Covering Plate | | 1 | PC | | |
| | | Alumminum Heat Sink(LEFT) | | 1 | PC | | |
| | | Alumminum Heat Sink(RIGHT) | | 1 | PC | | |
| | | Front Panel | | 1 | PC | | |
| | | Rear Panel | | 1 | PC | | |
| | | Bottom Panel | | 1 | PC | | |
| | | Mesh Grille | big | | 2 | PCS | |
| | | | small | | 4 | PCS | |
| | | Fit Iron Press Plate | 25×11.5×2mm | | 3 | PCS | |
| | | | 36×16.5×2mm | | 2 | PCS | |
| | | Screw | CM3×6 | | 28 | PCS | |
| | | | CM3×10 | | 3 | PCS | |
| | | | PT2×10 | | 2 | PCS | |
| | | | BTH3×12 | | 5 | PCS | |
| | | | PM3×12 | | 4 | PCS | |
| Nut | M3 | | 4 | PCS | | | |
| Meson | Φ3 | | 4 | PCS | | | |
| Flexibility Meson | Φ3 | | 4 | PCS | | | |
| 010 | Plastics | Polybag | 60×70mm | 1 | PC | | |
| | | | 320×350mm | 1 | PC | | |
| | | Knob | | 3 | PCS | | |
| 011 | Package | Poly-form | MX 1000 | 1 | pair | | |
| | | Fuse | 30A | 1 | PC | | |
| | | Screw | BA4×10 | 4 | PCS | | |
| | | Meson | Φ5 | 4 | PCS | | |
| | | Flexibility Meson | Φ5 | 4 | PCS | | |
| | | User's Manual | MX 1000 | 1 | SET | | |
| | | Gift Box | MX 1000 | 1 | PC | | |
| | | Silicon Silk | 25×45mm | | 2 | PCS | |
| 40×60mm | | | 1 | PC | | | |
| 20×30mm | | | 1 | PC | | | |
| 012 | Accessories | RCA Jacks Covering | | 4 | PCS | | |
| | | Switch Catton Pad | 7×16mm | 2 | PCS | | |
| | | Groundwire Solder Plate | Φ3 | 1 | PC | | |
| | | Tube | Φ1 | 2 | PCS | | |
| | | Glue | | | | | |
| | | Tin | | | few | | |