

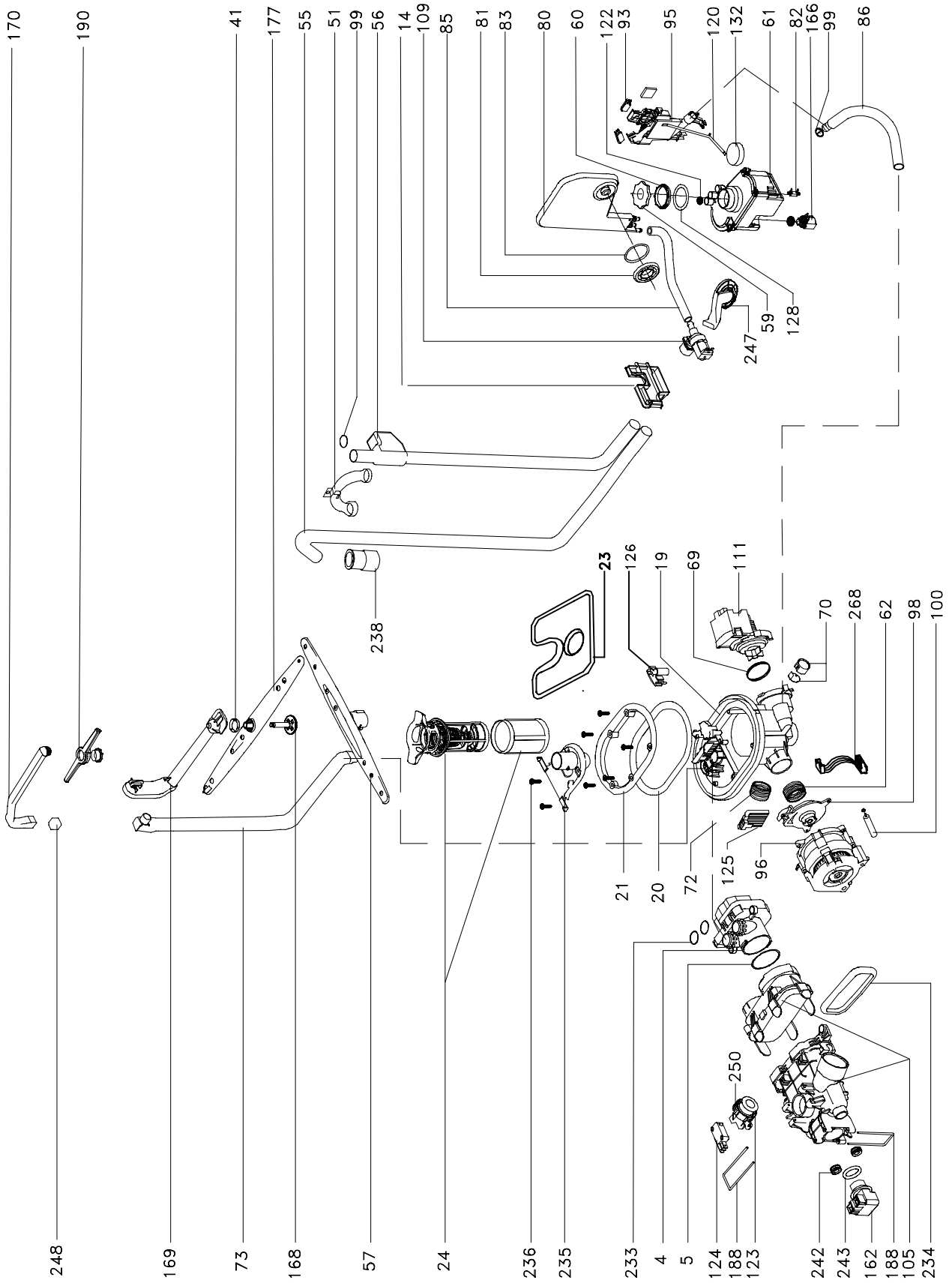


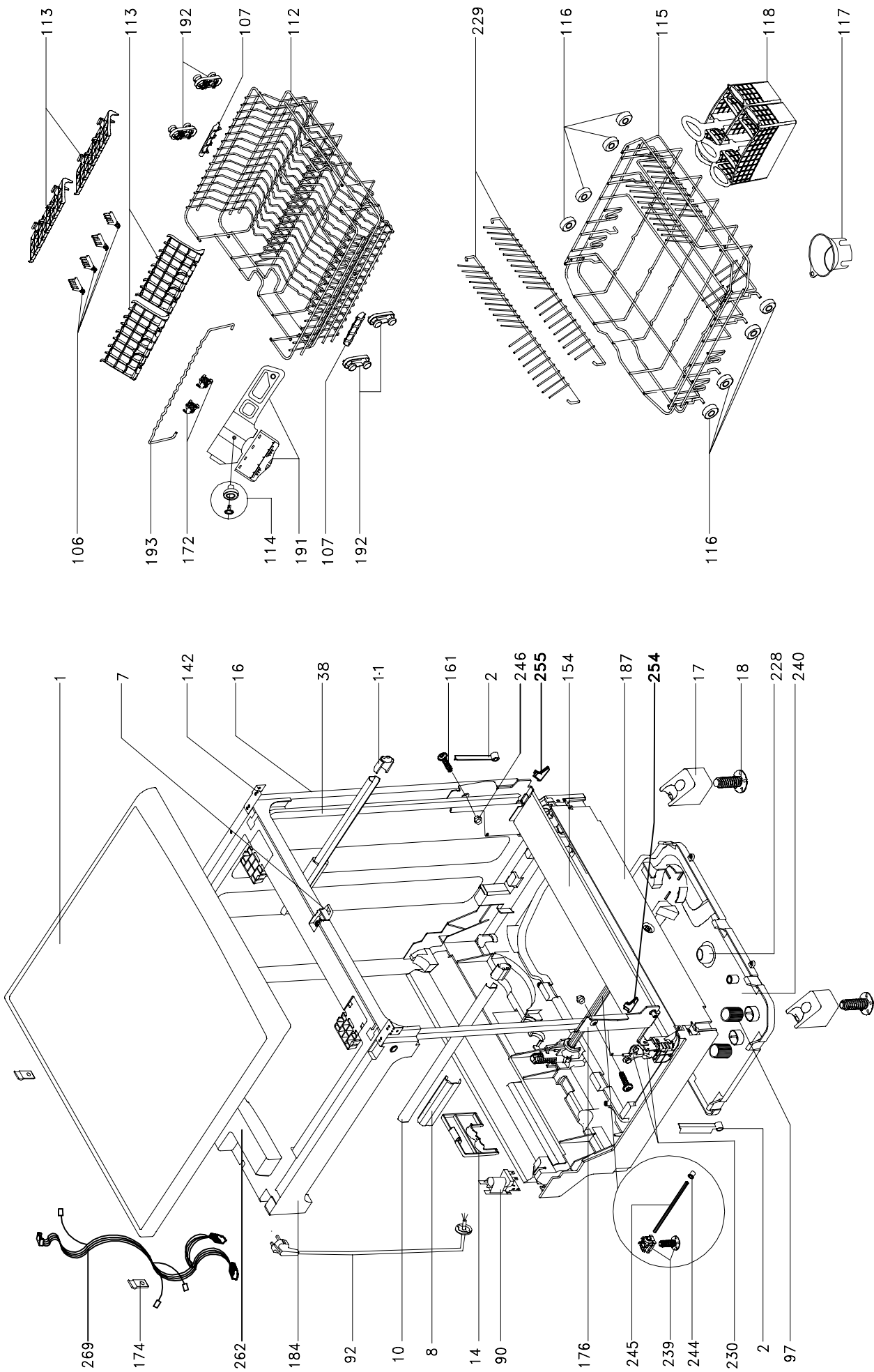
Opvaskemaskine

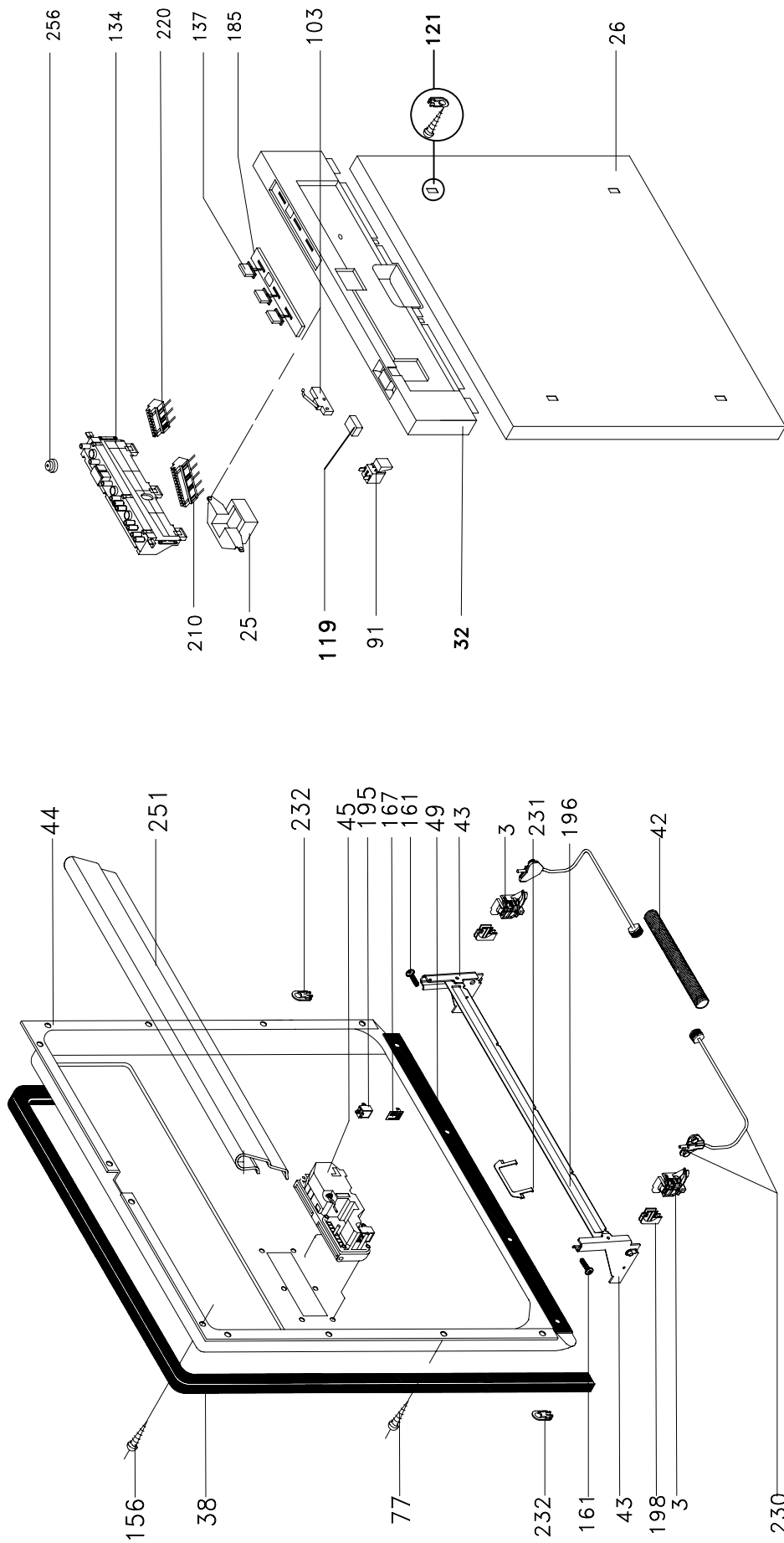
LF-65 IT



PV IMPORT a/s GÅRSDALSVEJ 20 8800 VIBORG







FAGOR IT 2004 STANDARD-DELUXE

DATE:20-FEBRUARY-2004

PROGRAMME STEP	PROGRAMMES						CONDITION FOR STEP	FUNCTIONS							PROGRAMME STEP	BASIC FUNCTION						
	USAGER			FAGOR				OUTPUTS														
	1	2	3	4	5	6		1	2	3	4	5	b7	b6			b5	b4	b3	b2	b1	b0
0																					0	
1																					1	
2																					2	DRAIN
3																					3	
4																					4	
5																					5	
6																					6	
7																					7	
8																					8	
9																					9	
10																					10	
11																					11	
12																					12	
13																					13	
14																					14	
15																					15	
16																					16	
17																					17	
18																					18	
19																					19	
20																					20	
21																					21	
22																					22	
23																					23	
24																					24	
25																					25	
26																					26	
27																					27	
28																					28	
29																					29	
30																					30	
31																					31	
32																					32	
33																					33	
34																					34	
35																					35	
36																					36	
37																					37	
38																					38	
39																					39	
40																					40	
41																					41	
42																					42	
43																					43	
44																					44	
45																					45	
46																					46	
47																					47	
48																					48	
49																					49	
50																					50	
51																					51	
52																					52	
53																					53	
54																					54	
55																					55	
56																					56	
57																					57	
58																					58	
59																					59	
60																					60	
61																					61	
62																					62	
63																					63	
64																					64	
65																					65	
66																					66	
67																					67	
68																					68	
69																					69	
70																					70	
71																					71	
72																					72	
73																					73	
74																					74	
75																					75	
76																					76	
77																					77	
78																					78	
79																					79	
80																					80	
81																					81	
82																					82	
83																					83	
84																					84	
85																					85	
86																					86	
87																					87	
88																					88	
89																					89	

Notes on PROGRAMMES:
C Alternate wash
RE1 Electronic regeneration
R Temperature maintained at -3°
AS Dirty water
AL Clean water
EX Top Express runs if selected
NEX NO Top Express runs if Express is not selected
RFT Water cloudiness measured in last second
RFT Water cloudiness measured in last second

F=50Hz
 TDS1 = 0,84 sec
 TDS2 = 1,25 sec
 TDS3 = 1,67 sec
 TDS4 = 2,10 sec

F=60Hz
 TDS1 = 0,70 sec
 TDS2 = 1,04 sec
 TDS3 = 1,40 sec
 TDS4 = 1,67 sec

Lower
 DS2 Open
 DS3 Closed
 DS1 Closed
 DS4 1/2 Open

Upper
 C Closed
 Open
 1/2 Open
 Closed

C Fill/drain position
 50s
 10s
 10s

MN full means the level micro switch is indicating full (contact closed).
 MN empty means the micro switch level is indicating empty (contact open).

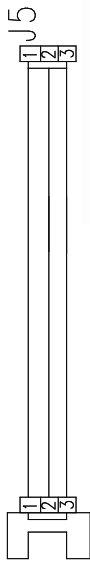
FOR INTENSIVE, AUTOMATIC AND MIXED PROGRAMMES THE CLOUDINESS SENSOR MUST BE READ ON PREWASH. TO DECIDE WHETHER TO USE THE SAME WATER FOR WASHING, ON AUTOMATIC IT WOULD ALSO WASH AT 55° OR 65°.

Notes on STEP CONDITIONS:
 DS1, DS2, DS3 and DS4 are the four preset stopping positions for the distributor. They are all set as the position the distributor reaches 0.1 seconds after a single micro switch contact has opened, and they are differentiated by the time this contact remains closed.
 The nominal contact closing times preceding each stopping position are as follows:
 The motor distributor completes a full turn in 15 seconds.

HEATING ELEMENT:
 The heating element is connected until the step condition temperature setting is reached. It is then switched off. If the step condition includes another type of condition (e.g. time) apart from a temperature setting:
 - when the temperature setting is reached, the heating element switches off.
 - except when R is indicated, in which case the temperature regulation is done with hysteresis.

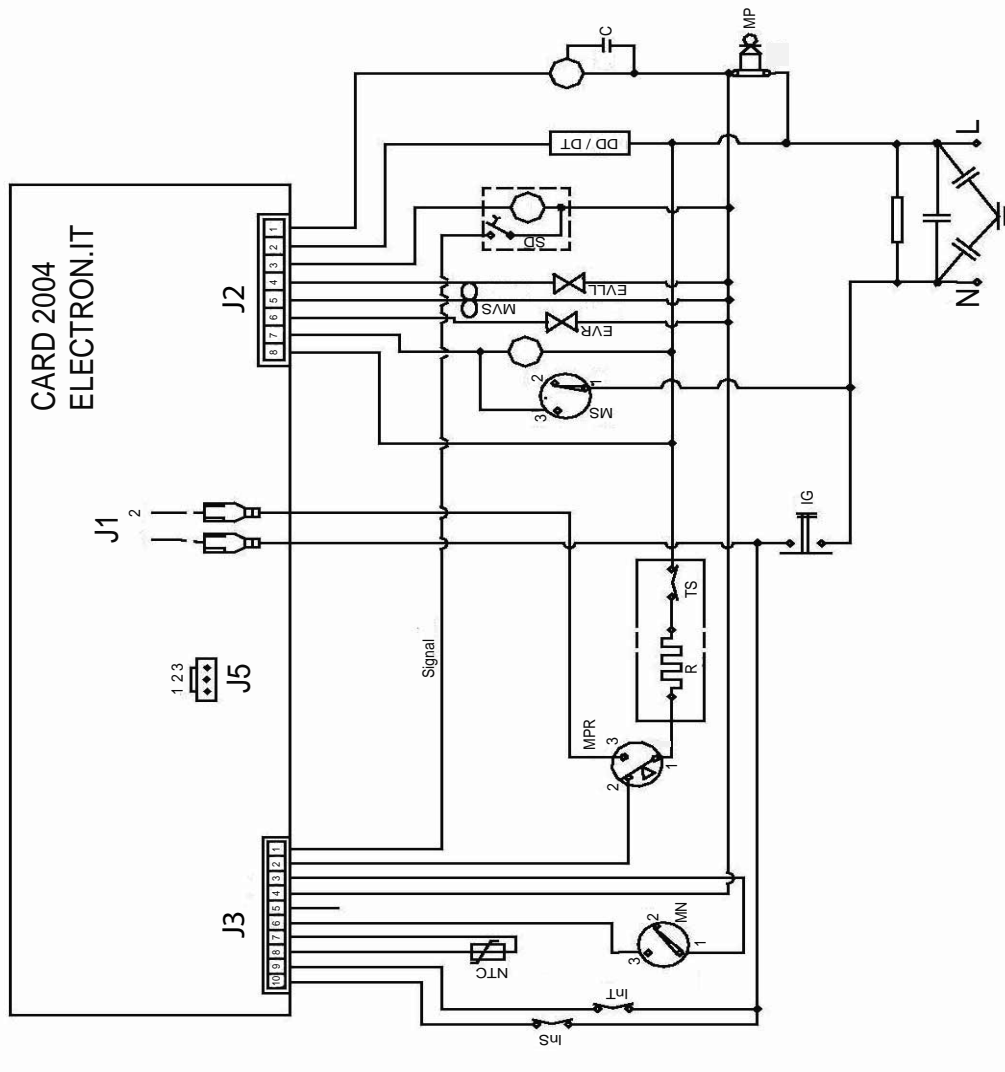
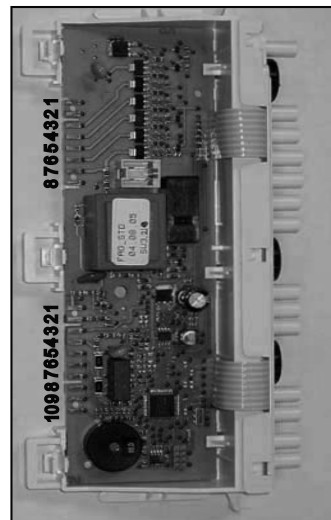
Strictly speaking, STOP is not a step condition. It means that the step counter is placed on hold.
 Strictly speaking, RESTART is not a step condition. It means the step counter goes to 0.

TUR. SENSOR



- NTC
- R_RESISTANCE
- M_WASH MOTOR
- C_CONDENSER
- IG_MAIN SWITCH
- EB_DRAIN PUMP
- TS_SAFETY THERMOSTAT 85°
- MVS_DRYING VENTILATOR
- MD_DISTRIBUTOR MOTOR
- SD_DISTRIBUTOR SIGNAL
- MP_DOOR MICROSWITCH
- MN_NORMAL MICRO
- MS_SAFETY MICRO
- EVR_REGENERATION VALVE
- MPR_PRESSURE MICRO
- DD/DT DOSIFIER FOR DETERGENT AND RINSE-AID
- EVLL_WATER INTAKE VALVE
- Ins_SALT SWITCH
- InT_RINSE-AID SWITCH

Look the electronic card in this position to analyze this electric diagram:



Pos.	Reference	Description	From	Until
2	V53B000T0	EXTENSION		
2	V53B000U6	EXTENSION		
3	VF9B000A5	GUIDE RAIL		
3	VF9B000B1	GUIDE RAIL		
4	LV0860500	MOTOR UNIT		
5	V87B000C0	SEAL		
7	V66B000B5	CATCH		
8	VA9B000D3	BEARING		
10	LV0861600	GUIDE RAIL UNIT		
11	VA9B000E9	END STOP		20-03-2006
11	VA9B000G1	END STOP	20-03-2006	
14	V19C000D7	COVER		
16	V53B000A0	SIDE PANEL		
16	V53B000C2	SIDE PANEL		
16	V53B000V2	SIDE PANEL		
16	V53B000W8	SIDE PANEL		
17	V19C000B6	EXTENSION		
18	V21B000B3	ADJUSTABLE FOOT		
19	VE8A000M5	PAN		
20	VC5A000E3	SEAL		
21	VC5A000F9	FIXING		
23	VE5A001F8	FILTER		
24	VE5A001G4	FILTER UNIT		
25	V09B000N3	DOOR CLOSURE		
26	V67A002I3	DOOR		
32	V27M000B4	CONTROL PANEL		20-04-2007
32	V27M001B2	CONTROL PANEL	21-04-2007	
38	V72B000G9	DOOR SEAL		
41	V87A000E5	SEAL		
42	VF6A000I1	SPRING		
43	VC4B000A9	MOVING HINGE		
43	VC4B000B5	MOVING HINGE		
44	VF0000026	INSIDE DOOR		
45	V64I000H5	FEEDER		
49	VB3B000B1	LOWER DOOR SEAL		
51	LQ1A000A1	BENDER		
55	VH7A000I1	DRAIN PIPE		
56	V77I000E6	WATER INTAKE HOSE		
57	VL4S000E2	DISTRIBUTOR		
59	VH2A000F5	CAP		
60	VH2A000E9	NUT		
61	VH2B000B8	DECALCIFIER		
62	VC5A000G5	SEAL		
69	LV0655100	SEAL		
70	LV0860300	NON-RETURN UNIT		
72	V87A000S6	SEAL		
73	VG8A000U3	INNER PIPE		
77	Z02K039A4	SCREW		
77	Z02K041A7	SCREW		
80	VH2A000H7	AIR BREAK UNIT		
81	VH2B000F1	NUT		
82	LV0655900	REED		
83	LV0655200	SEAL		
86	V24A000Z0	PAN PIPE		
90	VI8I000F3	FILTER		
91	V36H000A6	SWITCH		
92	V35A002A3	POWER CABLE		
93	V23A000E0	MICRO		
95	VJ7A000N1	LEVELLING UNIT		
96	LV0861200	PUMP UNIT		
97	VC6A000D5	SUPPORT		
98	LV0656700	WOBLER		
99	V87B000E1	SEAL		
100	VH6I000D0	CONDENSER		
103	V23I000C5	MICRO		
105	V12B001C9	HEATER UNIT		
106	VJ1A000J1	CUTLERY		
107	VC8B001A8	HANDLE		
111	V99I000H1	DRAIN PUMP		
112	VC8B000E9			

Pos.	Reference	Description	From	Until
113	VC8B003A4	FOLDING ADJUSTABLE		
114	LV0860450	BSKT.WHEEL UNIT		
115	VH1A000N3	LOWER BASKET		
116	VE2A000J0	WHEEL		
117	VH5A000B5	FUNNEL		
118	VD9A000L1	CUTLERY		
119	V58X000C8	KEY		
120	VJ7A000L0	LEVER		
121	LV0859903	ACCESSORY UNIT		
122	LV0655300	O-RING		
123	LV0656100	SUPPORT		
124	V23I000E6	MICRO		
125	VL1A000A1	GRILLE		
126	VK9A000A8	SUPPORT		
128	LV0162600	SEAL		
132	VJ7A000P3	FLOAT		
134	V54L001A4	ELECTRNC. CIRCUIT		
137	V58X000D3	KEY		
142	VE7B000A3	FIXING		
143	V09C000B0	SPRING		
154	V92B000C7	SPACER		
156	Z02K037A8	SCREW		
161	Z02K042A5	SCREW		
162	LV0656200	THERMOSTAT		
166	LV0654800	ELECTROVALVE		
167	LV0653800	REED		
168	VE4A000G9	SHAFT		
169	VE4A000H5	SUPPORT		
170	VA5A000K6	PIPE		
172	VJ1A000E2	SUPPORT		
174	VI6B000I4	FIXING		
176	V92B000A5	HINGE		
176	V92B000B1	HINGE		
177	VA5A000M8	DISTRIBUTOR		
178	LV0657100	SPRING		
179	LV0657200	SELECTOR SWITCH		
180	V03E000A8	SUPPORT		
184	V19C000F9	COVER		
185	V01M000B5	EMBELLISHER		
187	V19C000A0	BASE		
188	LV0656300	SUPPORT		
190	VF2B000B6	SPRINKLER		
191	VJ8A000N9	LIFTING UNIT		
191	VJ8A000P1	LIFTING UNIT		
192	VJ8A000M4	WHEEL		
193	VC8A000M4	SUPPORT		
195	LV0655600	THERMOACTUATOR		
196	VC4B000C1	SPACER		
198	VF9B000C7	REGULATOR		
199	V80B000D0	TEMPLATE		
200	V28F011H0	USER MANUAL		
200	V28F011I5	USER MANUAL		
210	LV0657700	CONNECTOR		
220	LV0657800	CONNECTOR		
228	VE8A000N0	SUPPORT		
229	VJ1A000K7	ROD		
230	VC4B000F8	CORD		
231	VL8A000B2	PROTECTOR		
232	VC4B000E2	FASTENING		
233	V87B000B4	SEAL		
234	V87A000Z7	SEAL		
235	VK2A000C5	COVER		
236	Z02K038A6	SCREW		
238	VH7A000H6	EXTENSION		
239	V21B000C9	MECHANISME		
240	V19C000C2	COVER		
241	VC8B002A6	HANDLE		
243	V87B000D5	SEAL		
244	V21B000I3	NUT		
245	V21B000H8	SHAFT		
250	LV0858700	SEAL		
251	VB3B000C7	SUPPORT		

Pos.	Reference	Description	From	Until
252	LV0702200	TAPE		
254	V72C000A0	EXTENSION		
255	V72C000B6	EXTENSION		
256	LV0860000	PROTECTOR		
262	V02A000C9	COUNTERWEIGHT		