

Box Properties

--Description--

Name:

Type: Vented Box

Shape: Prism, square

--Box Parameters--

Vb = 40, liters

V(total) = 43,44 liters

Fb = 50, Hz

QL = 7,

F3 = 42,7 Hz

Fill = none

--Vents--

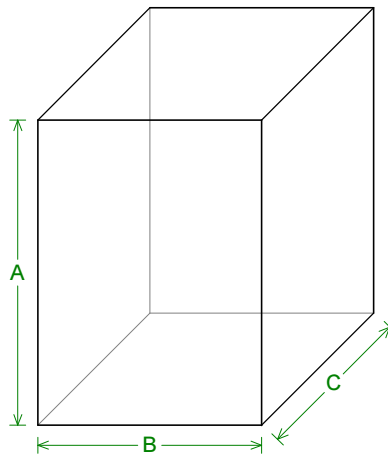
No. of Vents = 1

Vent shape = round

Vent ends = one flush

Dv = 104, mm

Lv = 172,1 mm



--External Dimensions--

A = 496,5 mm

B = 364, mm

C = 344, mm

--Internal Dimensions--

A = 452,5 mm

B = 320, mm

C = 300, mm

--Wall Thickness--

Front = 22, mm

Side = 22, mm

Driver Properties

--Description--

Name: SAL XPRO 2580

Type: Standard one-way driver

--Configuration--

No. of Drivers = 1

--Mechanical Parameters--

Fs = 30,38 Hz

Qms = 2,94

Vas = 38,09 liters

Cms = 0,246 mm/N

Mms = 111,6 g

Rms = 7,244 kg/s

Xmax = 12, mm

Xmech = 20, mm

P-Dia = 205, mm

Sd = 330,1 sq.cm

P-Vd = 0,396 liters

--Electrical Parameters--

Qes = 0,3

Re = 3,66 ohms

Z = 4,392 ohms

BL = 16,12 Tm

Pe = 200, watts

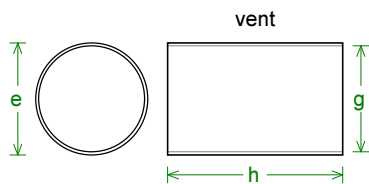
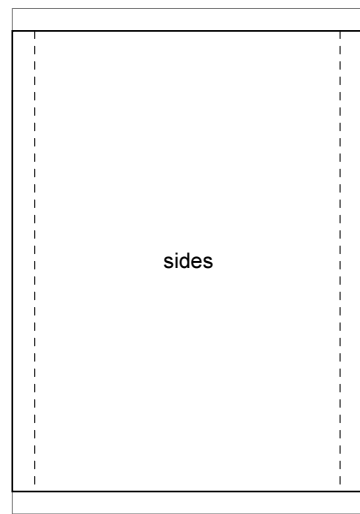
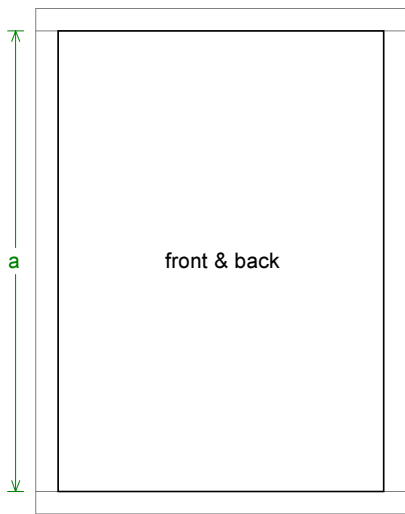
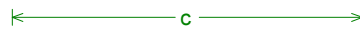
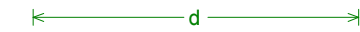
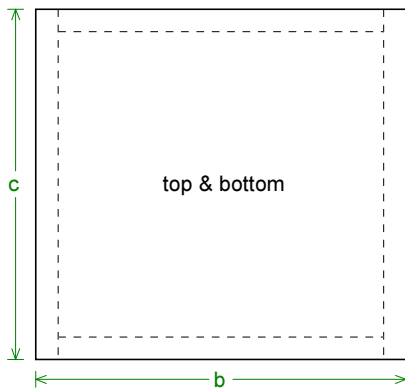
--Electromech. Parameters--

Qts = 0,28

no = 0,343 %

1-W SPL = 87,5 dB

2.83-V SPL = 90,9 dB



Box Parts

Box Shape: Square Prism

1 Top, 1 Bottom: depth (c) = 344, mm
width (b) = 364,, thickness = 22, mm

1 Front, 1 Back: height (a) = 452,5 mm
width (d) = 320,, thickness = 22, mm

2 Sides: height (a) = 452,5 mm
depth (c) = 344,, thickness = 22, mm

--Driver Mounting--
Mounting: Flush

--Vent Parts--

1 Duct: outside diameter (e) = 110, mm
inside diameter (g) = 104, mm
length (h) = 172,1 mm

