

# SERVICE GUIDE

## KEY SYSTEM CORP



**Revision History**

Version	Date	Change
1.0	2009-12-22	

## Table of Contents

Revision History.....	2
Table of contents.....	3
Getting Start.....	4
Conventions Used in this Guide.....	4
Safety Precautions.....	4
Chapter 1. How to Handle Defective Returns.....	5
1.2 Problem.....	6
1.2.1 No power, LED (indicator) unlighted.....	7
1.2.2 No sound.....	8
1.2.3 Right or left channel no sound.....	9
1.2.4 Noise.....	10
1.2.5 LED indicators no light.....	11
1.2.6 Headphone jack output no sound.....	12
1.2.7 VR, headphone jack or line-in jack abnormal.....	13
Chapter 2. Specification.....	14
Satellite.....	14
Chapter 3. Block diagram.....	15
Chapter 4. Part list.....	16
Chapter 5 Important notes.....	17
Chapter 6. Exploded view.....	18
Right Satellite.....	18
Left Satellite.....	19
Chapter 7 Schematic diagram.....	20

## Getting Started

### Conventions Used in the Guide

Pay Special Attention: Instructions that are important to remember and may prevent mistakes.

Caution: Information that, if not followed, may result in damage to the product.

### Safety Precautions

The following precautions should be observed in handling the speaker described in this guide:

Place the speakers on a flat, level and stable surface.

Do not place the speakers in environments subject to mist, smoke, vibration, excessive dust, salty or greasy air, or other corrosive gases and fumes.

Do not drop or jolt the speakers.

Do not allow anything to drop into the subwoofer case through its ventilator, as it could result in fatal electric shock or fire.

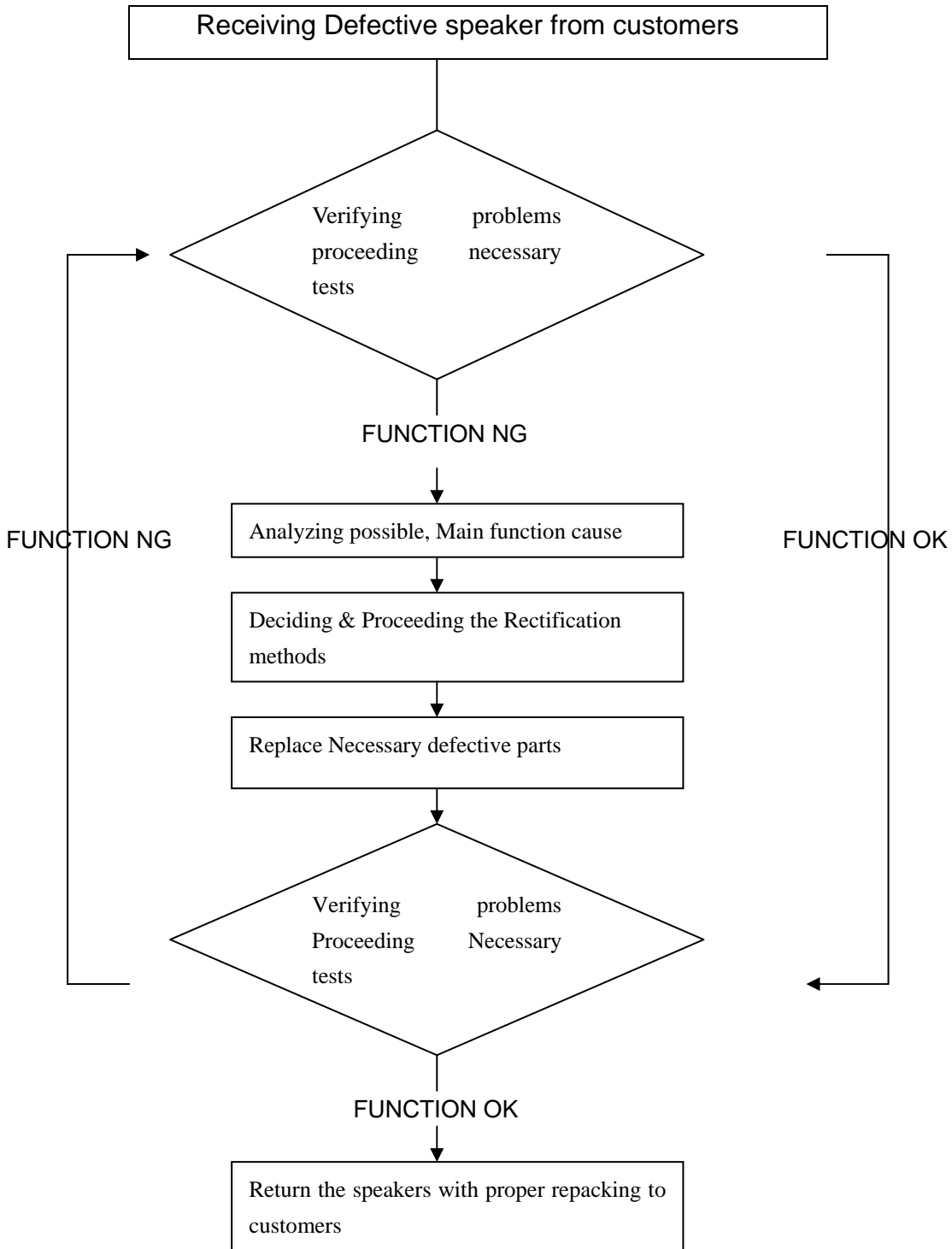
Place the unit far enough from other equipments for good heat dissipation.

Do not perform any maintenance with wet hand.

Prevent foreign substance, such as water, other liquids or chemical, from entering the speakers while performing maintenance procedures on the speakers.

# Chapter 1 How to Handle Defective Returns

## 1.1 Overview



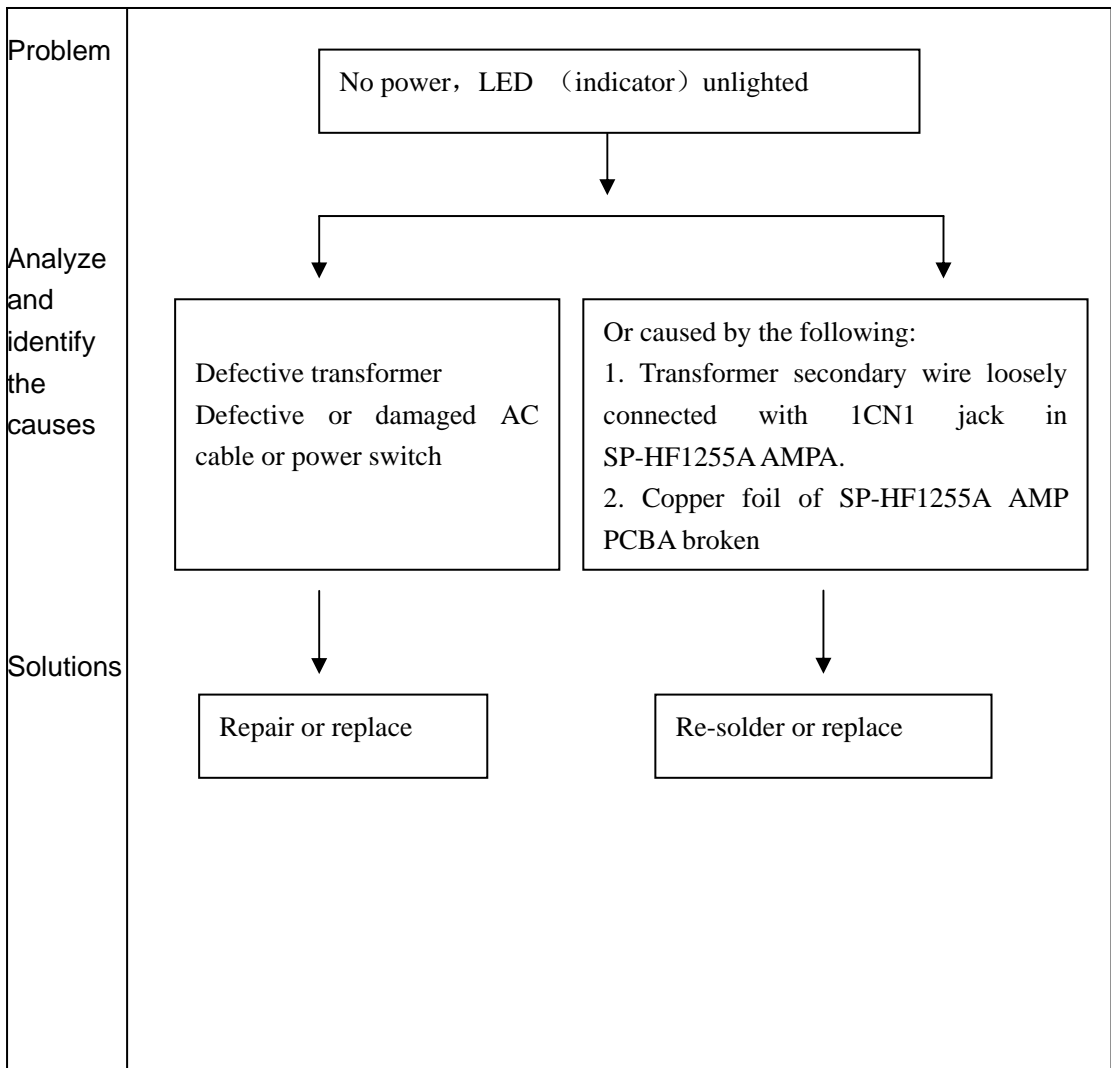
**1.2 Problems**

<b>Item</b>	<b>Item Problem Description</b>
1.2.1	No power, LED (indicator) no light
1.2.2	No sound
1.2.3	Right or left channel no sound
1.2.4	Noise
1.2.5	LED indicator no light
1.2.6	Headphone jack output no sound
1.2.7	VR, headphone jack or line-in jack abnormal

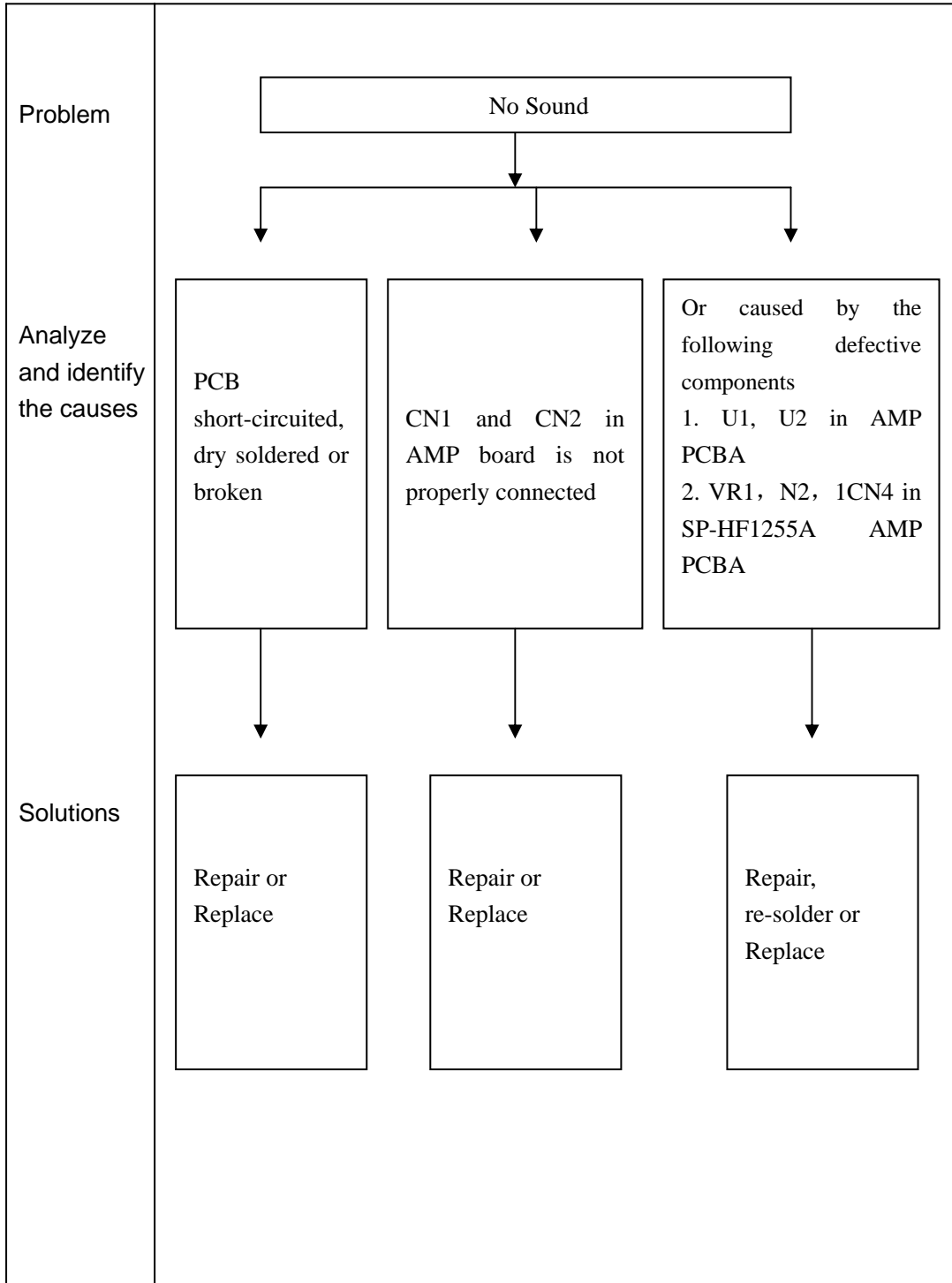
**Attention**

Please follow the numbered sequence marked within parenthesis given in individual Flow chat in that this is the best-recommended sequence to rectify the problems.

**1.2.1 No power, LED (indicator) unlighted**

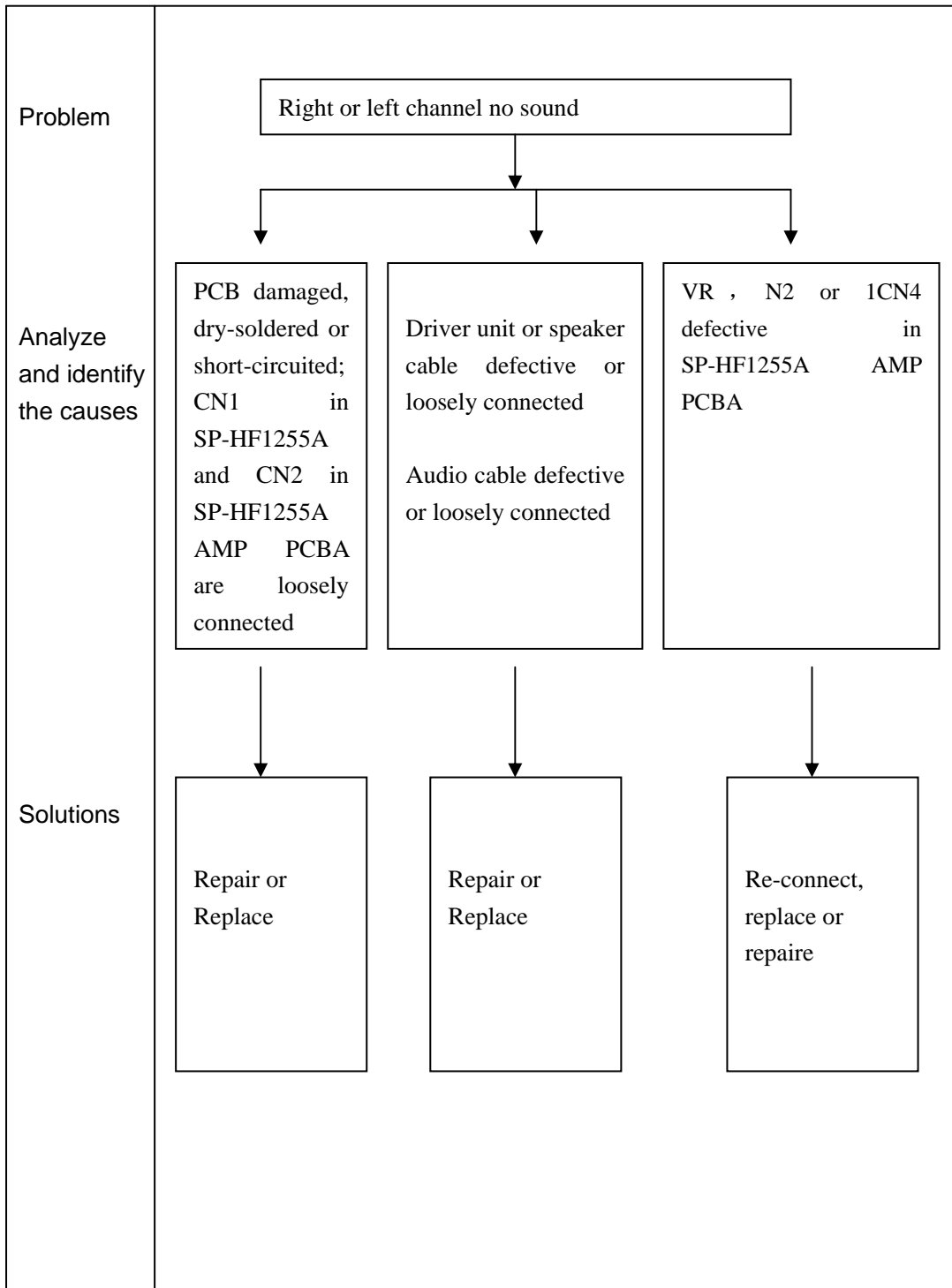


1.2.2 No Sound

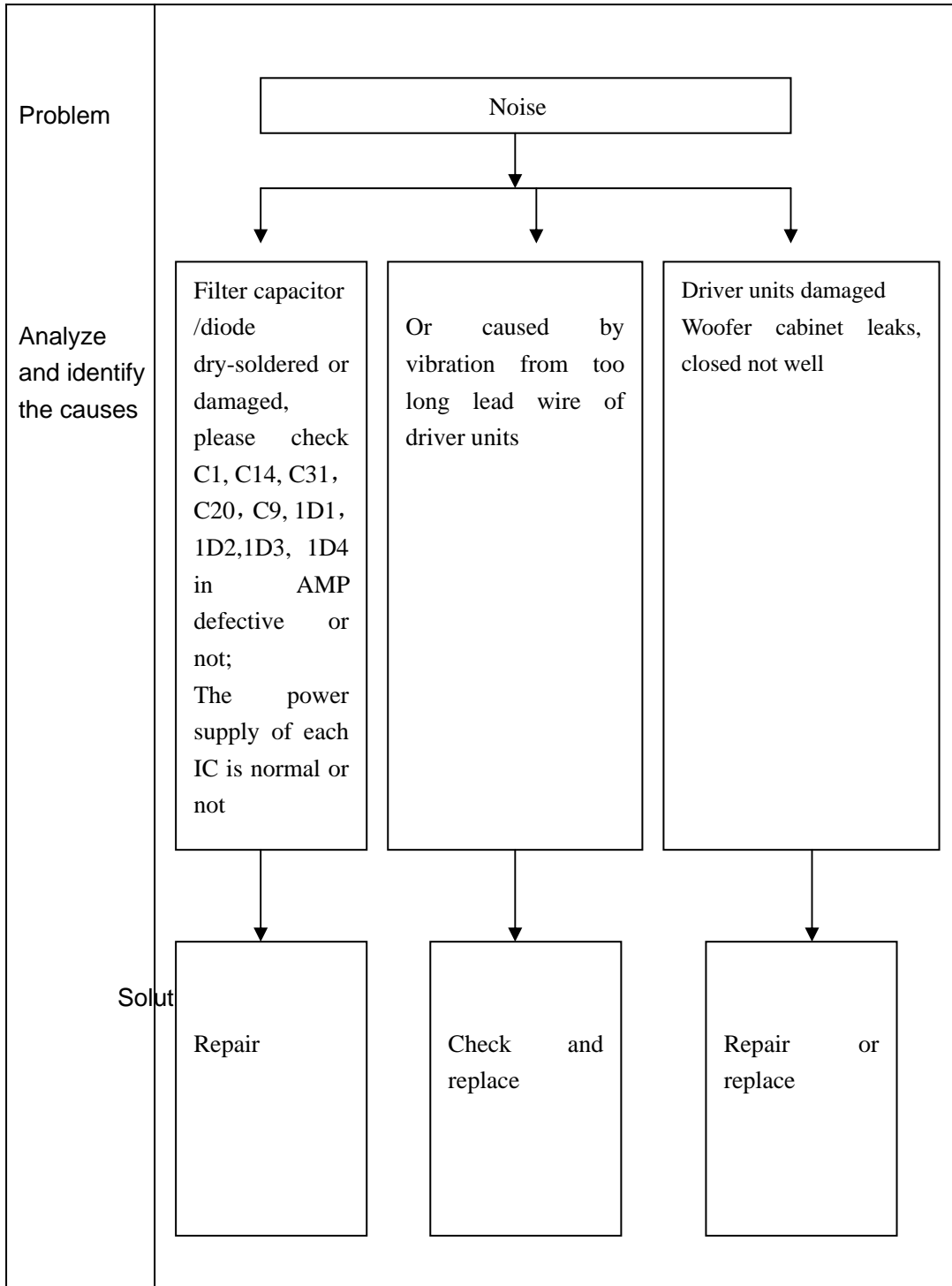




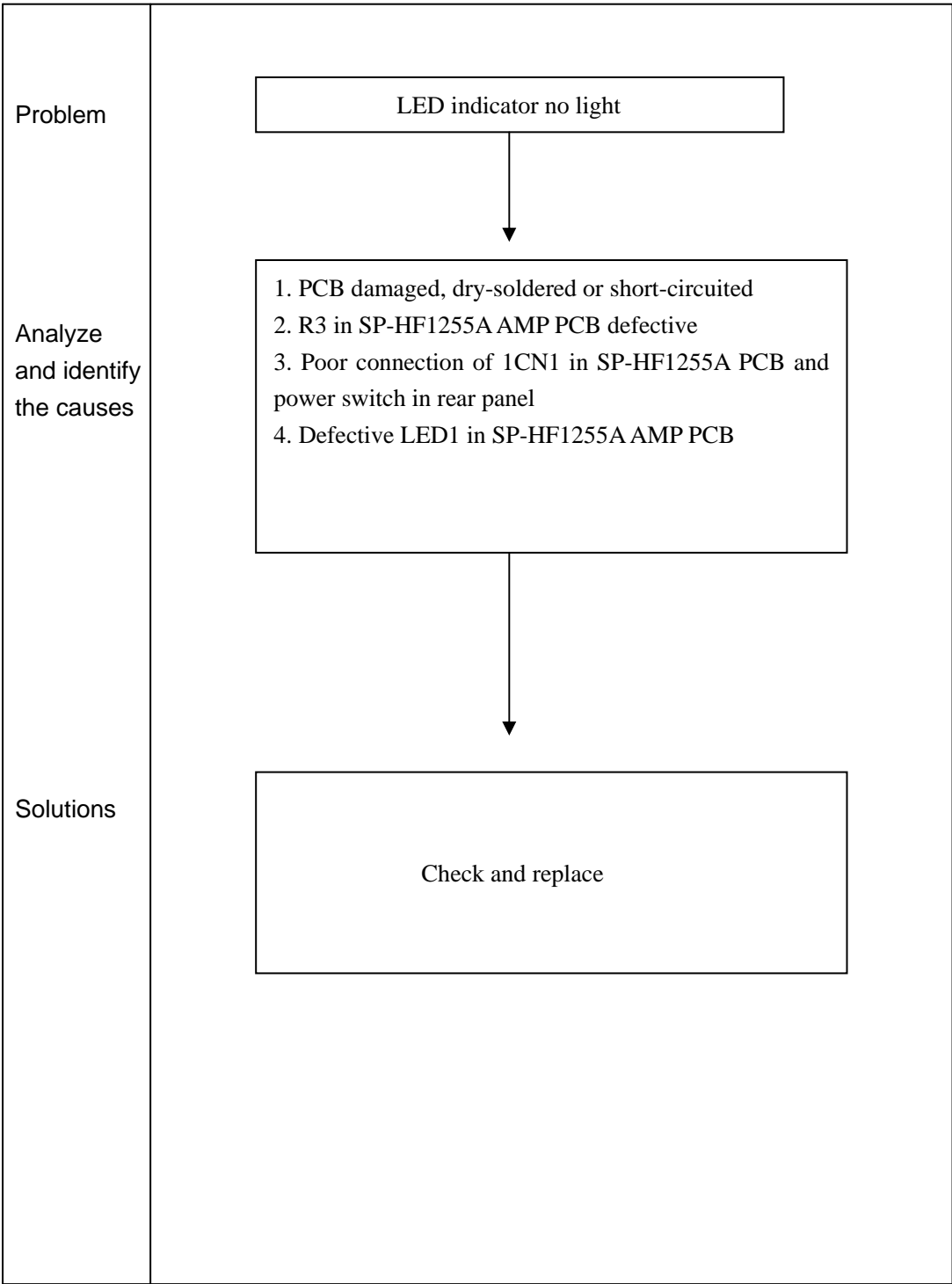
1.2.3 Right or left channel no sound



1.2.4 Noise



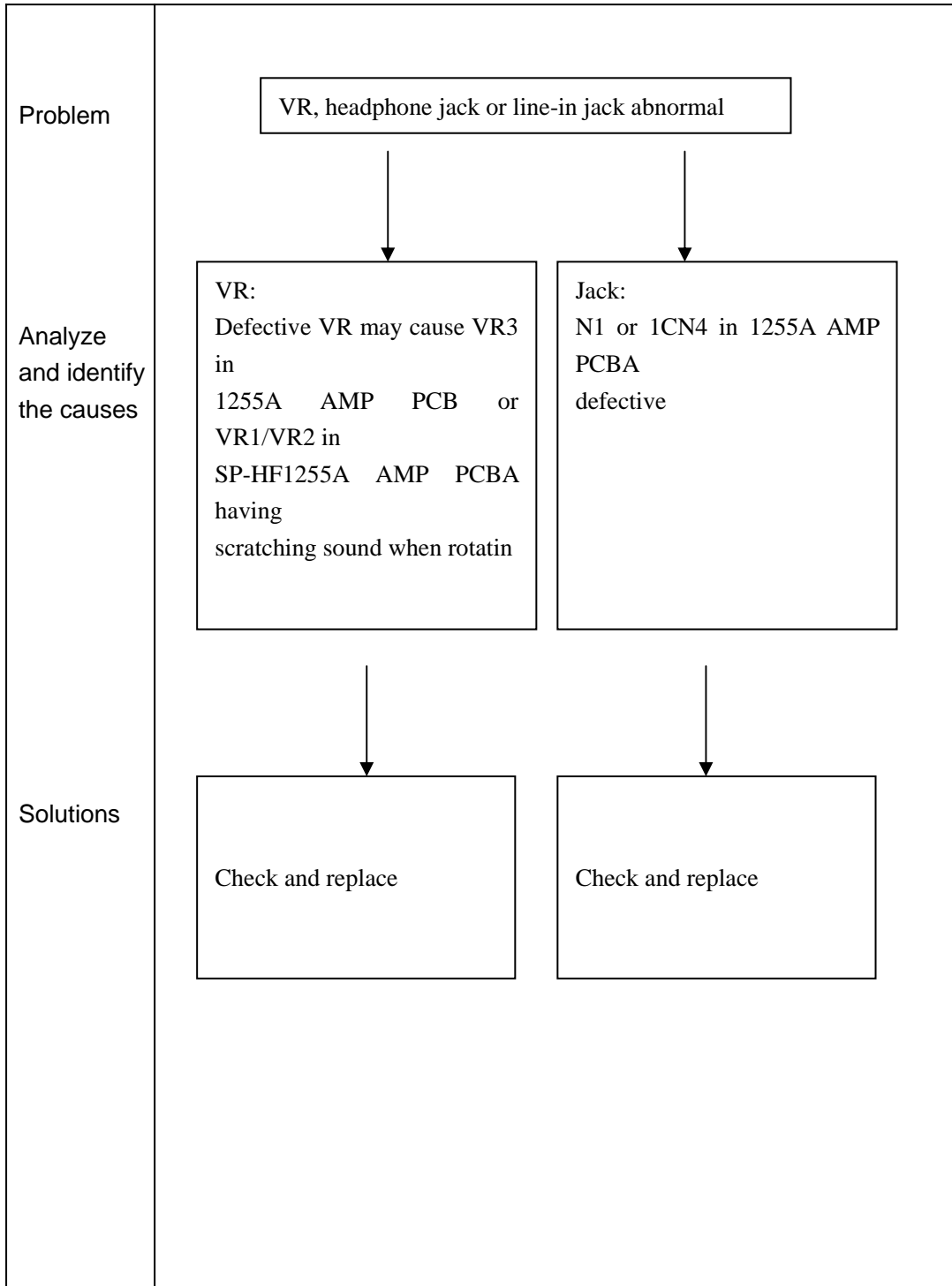
1.2.5 LED indicator no light



1.2.6 Headphone jack output no sound

<p>Problem</p>	<p>Headphone jack no sound</p>
<p>Analyze and identify the causes</p>	<p>N1 in 1255A AMP PCBA defective or its related copper foil broken</p>
<p>Solutions</p>	<p>Check and replace</p>

1.2.7 VR, headphone jack or line-in jack abnormal



## Chapter 2 Specifications

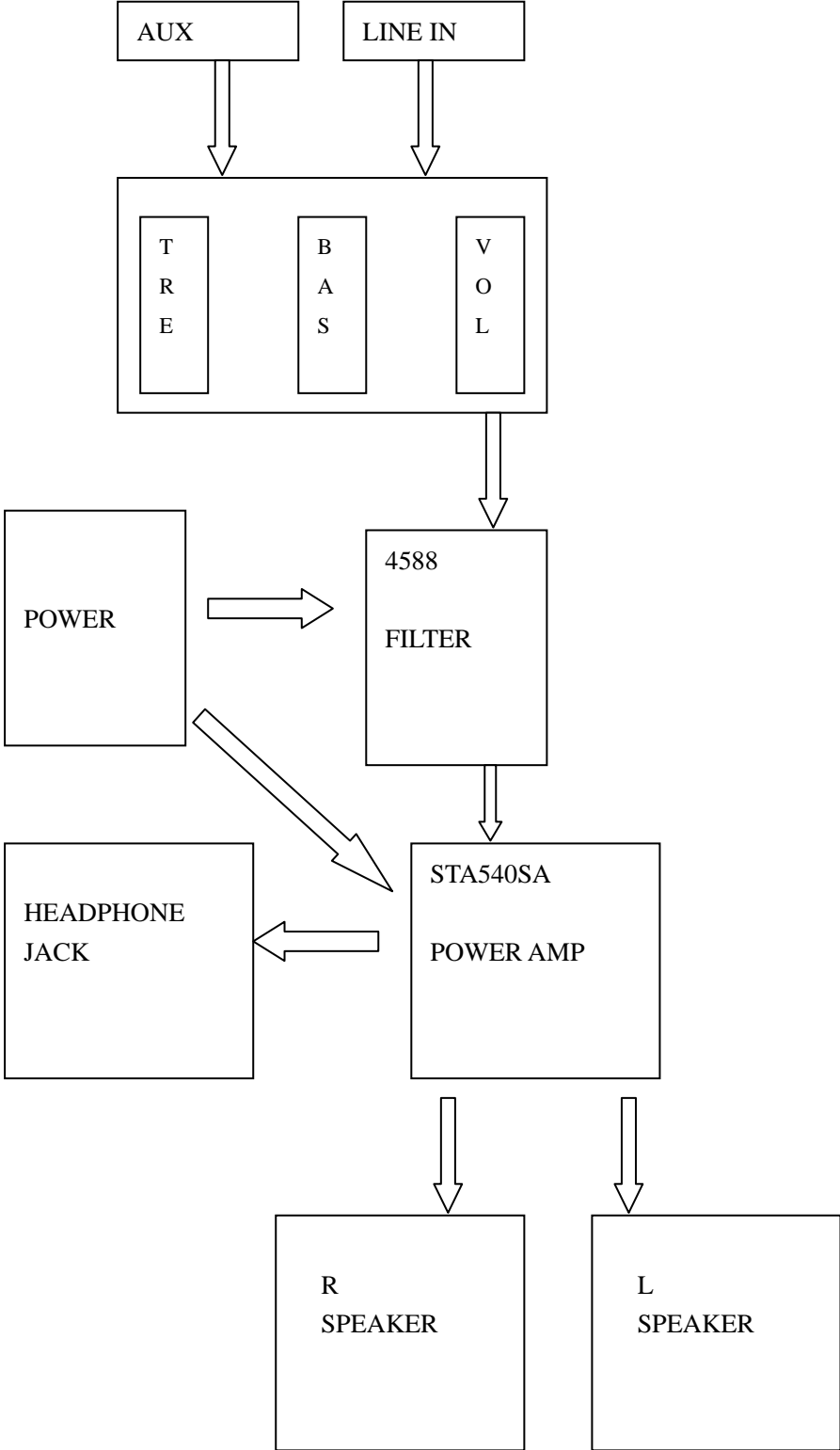
### Satellite

No	Description	Unit	Normal		Limit
			R	L	
1	RATED OUTPUT POWER @THD 10%	W	23.5	22.6	$\cong 20$
2	SENSITIVITY (1KHz) @RATED O/P POWER	m V	613	640	600 $\pm$ 60
3	SENSITIVITY (1KHz) @1W O/P POWER	m V	260	260	260 $\pm$ 60
4	MAX INPUT LEVEL @1% THD	m V	370	380	370 $\pm$ 35
5	<a href="#">DISTOPTION@1kHz 1W OUT</a>	%	0.8	0.8	$\cong 1$
6	FREQUENCY RESPONSE (1KHz -3DB ) LOW	Hz	20	20	20 $\pm$ 10
7	FREQUENCY RESPONSE (1KHz -3DB ) HI	KHz	20	20	20 $\pm$ 5
8	<a href="#">S/N@RATED O/P POWER</a>	d B	75	75	$\cong 70$
9	CHANNEL UNBALANCE @REF O/P POWER	d B	0.3	0.5	$\cong 1$
10	CHANNEL SEPARATION (ONE CHANNELIN;OTHER CHANNEL INPUT SHORTING	d B	51	51	$\cong 40$
11	HUM NOISE (VOLUME MAX;INPUT SHORTING)	m V	1.6	1.6	$\cong 2$
12	HUM NOISE (VOLUME MIN INPUT SHORTING)	m V	0.3	0.4	$\cong 1$

### Woofers

No	Description	Unit	Normal	Limit
1	RATED OUTPUT POWER@100HZ (10%THD)	W		
2	SENSITIVITY (100Hz) @RATED O/P POWER	m V		
3	SENSITIVITY (100Hz) @1W O/P POWER	m V		
4	MAX INPUT LEVEL@1% THD	m V		
5	DISTOPTION@100Hz 1W OUT	%		
6	FREQUENCY RESPONSE(100Hz -3DB ) LOW	Hz		
7	FREQUENCY RESPONSE(100Hz -3DB ) HI	Hz		
8	S/N RATIO@100HZ RATED O/P POWER	d B		
9	HUM NOISE (VOLUME MAX;INPUT SHORTING)	m V		
10	HUM NOISE (VOLUME MIN INPUT SHORTING)	m V		

### Chapter 3 Block diagram



**Charter 4 Part List****Right**

Description	Part No.
wooden cabinet, SP-HF1255A	21. 6. 020. 0033
driver unit, (woofer/tweeter)	21. 8. 040. 0031 21. 8. 920. 0008
AMP PCBA, SP-HF1255A	21. 1. 003. 0121
knob	21. 4. 014. 0063
power switch	11. 1. 192. 0003
transformer, 230V 50HZ/14V-2.5A	11. 2. 001. 0090
woofer driver unit cloth cover, SP-HF1255A	11. 6. 005. 0052
U1, STA540SA	11. 1. 170. 0122
U2, 4558	11. 1. 170. 0056
AC cable	11. 3. 001. 0035
VR1/VR2, 16KG-B50K-L15 MID POSITIONING	11. 1. 030. 0028
VR3, 16KG-B50K-L15	11. 1. 030. 0009

**Left**

Description	Part No.
Wooder driver unit cloth cpver	11. 6. 005. 0052
driver unit, (woofer/tweeter)	21. 8. 040. 0031 21. 8. 920. 0008
Wooden cabinet,SP-HF1255A satellite	21. 6. 030. 0048
Decorative ring	21. 4. 019. 0061 21. 4. 019. 0060



## Chart 5 Important notes

### **Packing requirement for sending the PCB assembly by post**

**PCB assembly is a kind of sophisticated electronic circuit board. Well packing will be required when sending them by post.**

\*Some sophisticated IC components are mounted on the PCB assembly; hence it is necessary to pack each PCB assembly with a separate static protecting bag, in order to avoid static electricity.

\*Reliable external packing is also very important when sending the PCB assembly by post, in that it would avoid unnecessarily lost or damage

### **Short of spare parts while repairing a speaker system**

**If you are short of spare parts when you have some speaker systems waiting to be repaired, it would be recommended to take the necessary parts from one**

**Speaker system, so that you may have them as many speaker systems**

## Chapter 6 Exploded view

Right

NO.	DESCRIPTION	DATE	BY	E.C.N. NO.
1				
2				
3				
4				
5				
6				
7				
8				
9				
10				
11				
12				
13				
14				
15				
16				
17				
18				
19				
20				
21				
22				
23				
24				
25				
26				
27				

RANGE	0~6	6~30	30~60	60~120	120~over	ANGLE
TOLERANCE	±0.10	±0.15	±0.20	±0.25	±0.30	±0.5°

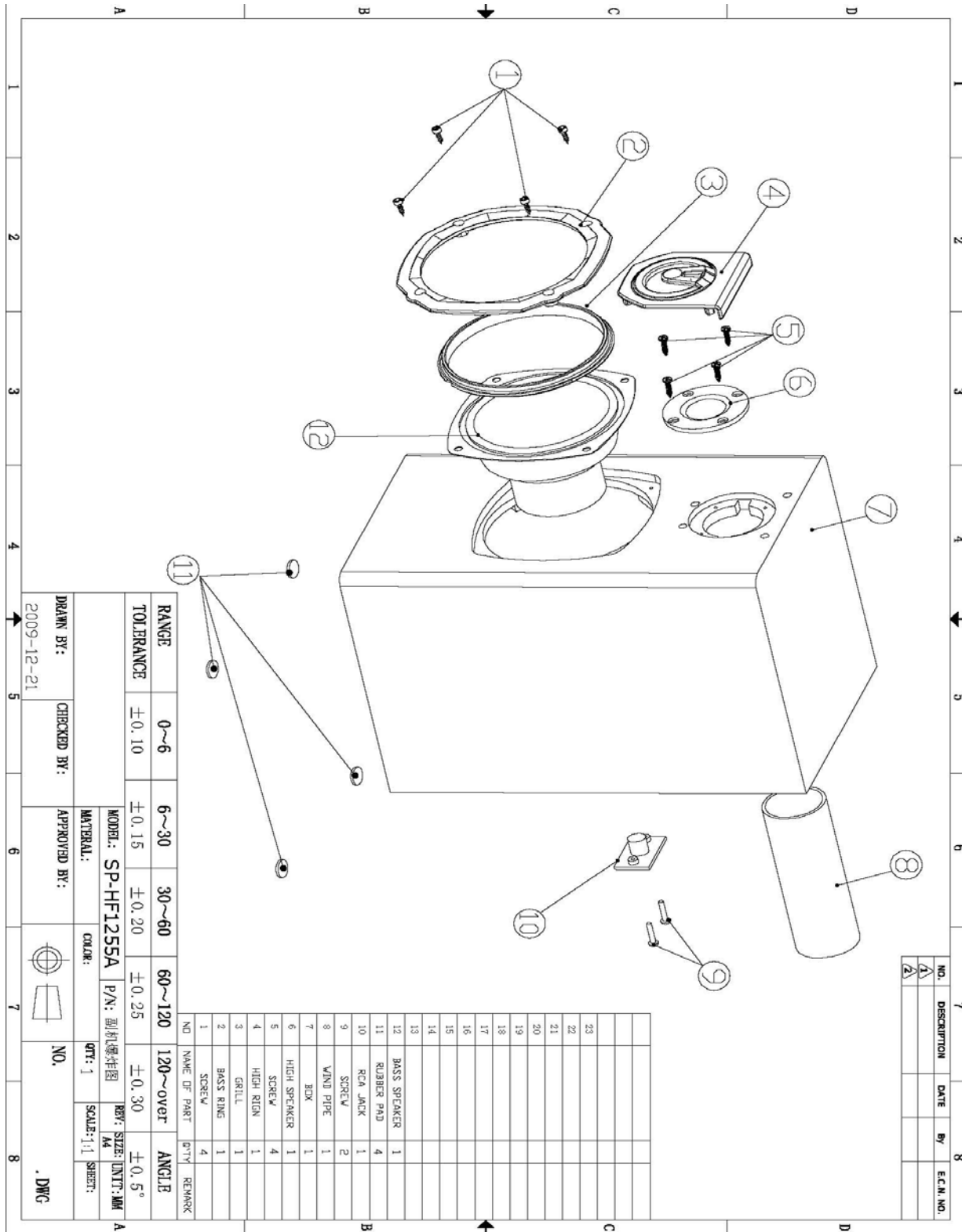
NO.	NAME OF PART	QTY	REMARK
1	SCREW	4	
2	SPRING GASKET	2	
3	SCREW	1	
4	SCREW	1	
5	SCREW	4	
6	HIGH SPEAKER	1	
7	BOX	1	
8	GASKET	2	
9	GASKET	2	
10	NUT	2	
11	TRANSFORMER	1	
12	WIND PIPE	1	
13	BACK COVER	1	
14	SCREW	2	
15	SCREW	8	
16	SCREW	1	
17	SWITCH	1	
18	CABLE JACK	2	
19	RCA JACK	1	
20	RUBBER PAD	1	
21	SCREW	4	
22	HEAT SINK	1	
23	AMP BOARD	1	
24	PANEL	1	
25	NUT	3	
26	KNIB	3	
27	BASS RING	1	

DRAWN BY:	CHECKED BY:	APPROVED BY:	NO.
-----------	-------------	--------------	-----

MODEL: SP-HF1255A P/N: 主机爆炸图  
 MATERIAL: COLOR: QTY: 1  
 SCALE: 1:1 SHEET: .DWG

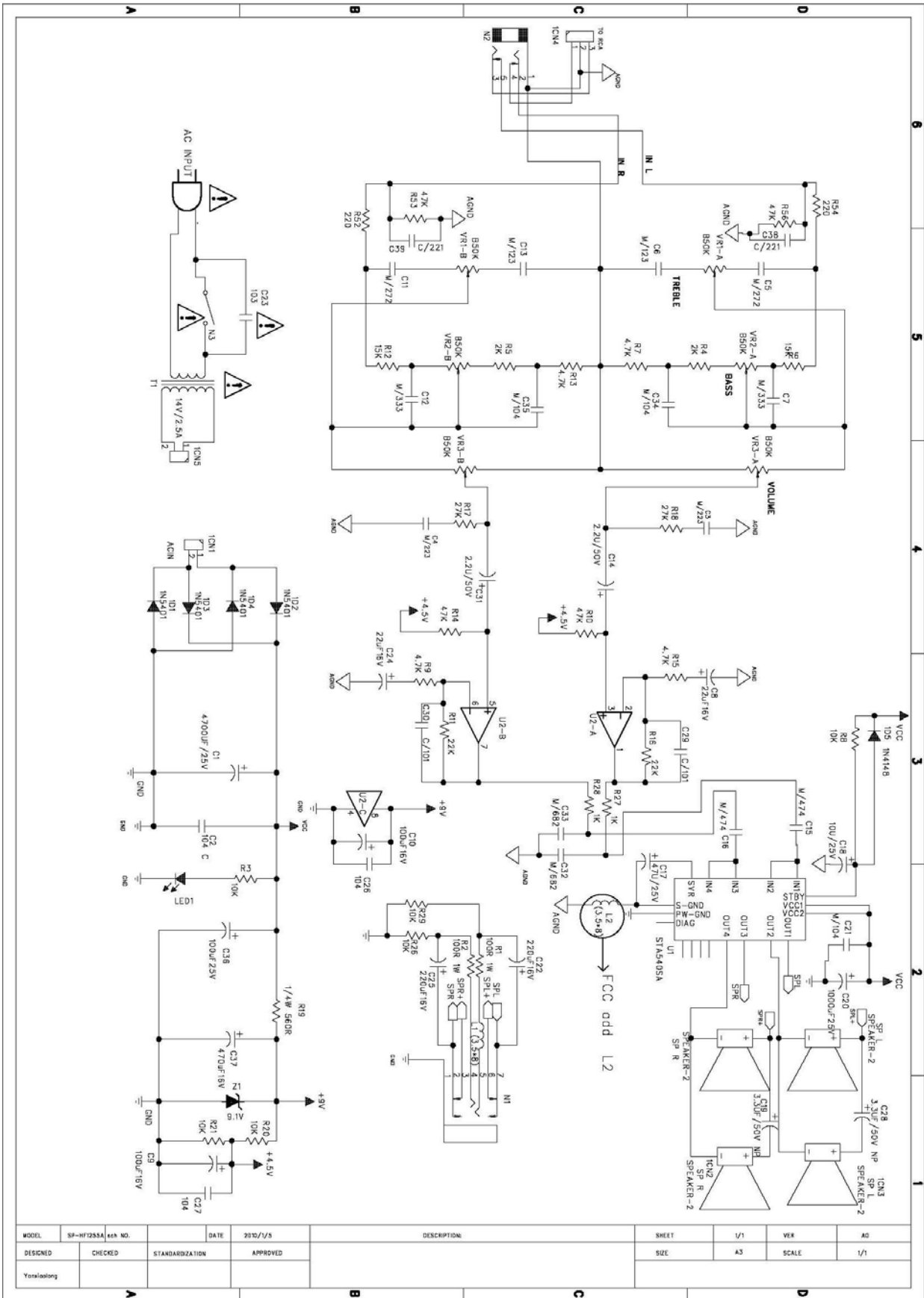
## Chapter 6 Exploded view

Left



PDF created with pdfFactory Pro trial version [www.pdffactory.com](http://www.pdffactory.com)

## Chapter 7 Schematic diagram



MODEL	SP-HF1255A	Rev. NO.	DATE	2010/10/25	DESCRIPTION	SHEET	1/1	VER	A0
DESIGNED	CHECKED	STANDARDIZATION	APPROVED			SIZE	A3	SCALE	1/1
Yanliang									