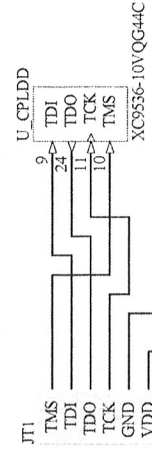
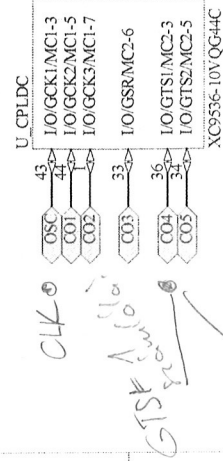
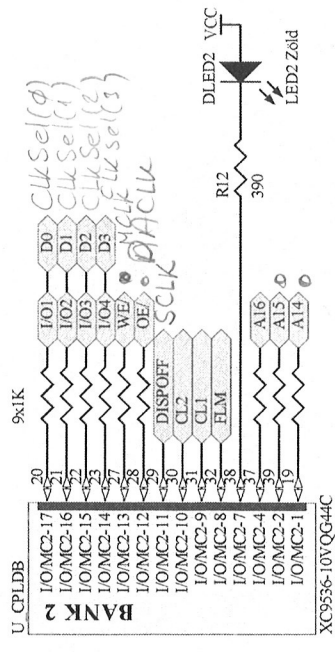
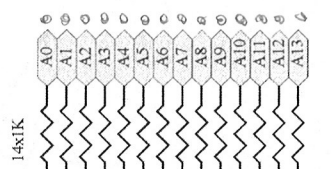
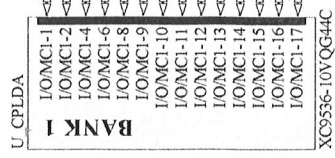
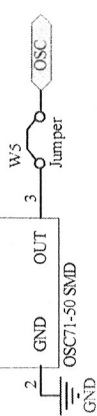
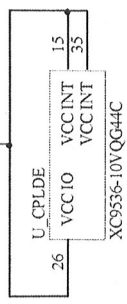
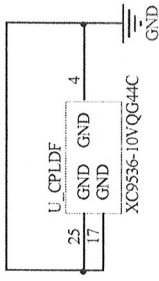
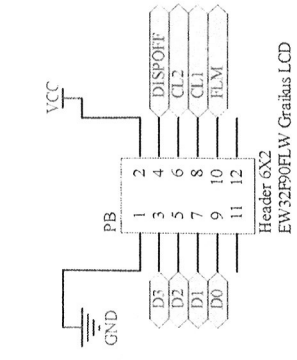


5V - 3.3V



3.3V tápfeszültség alkatrészszakaszok össze kell kötni a KF33BD 1-8 lábait!



*GTS = phi akkor nullázás
Ezzen be van állítva indítja a
állítja le a PIC a működését*

*A GTS jel után szabad állítani
közvetlenül a CLK Sel kivételével
A GTS-neh 1-es értéken kell
lemez a nullázás ideje alatt.*

Title			LCD driver CPLD modulja		
Size	Number	Revision	v1.0		
A4					
Date	2010.06.22.	Sheet of	4		
File	E:\munka\Sheet1_SchDoc	Drawn By:	bbanka		

135x93