

1

2

3

4

A

A

B

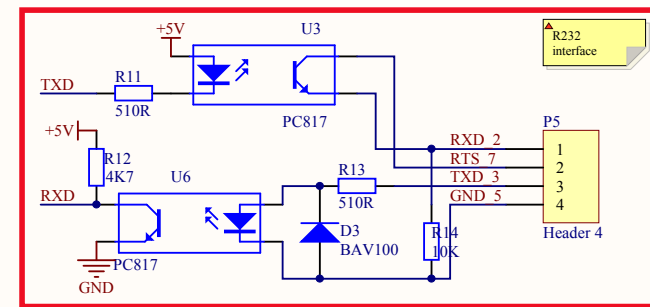
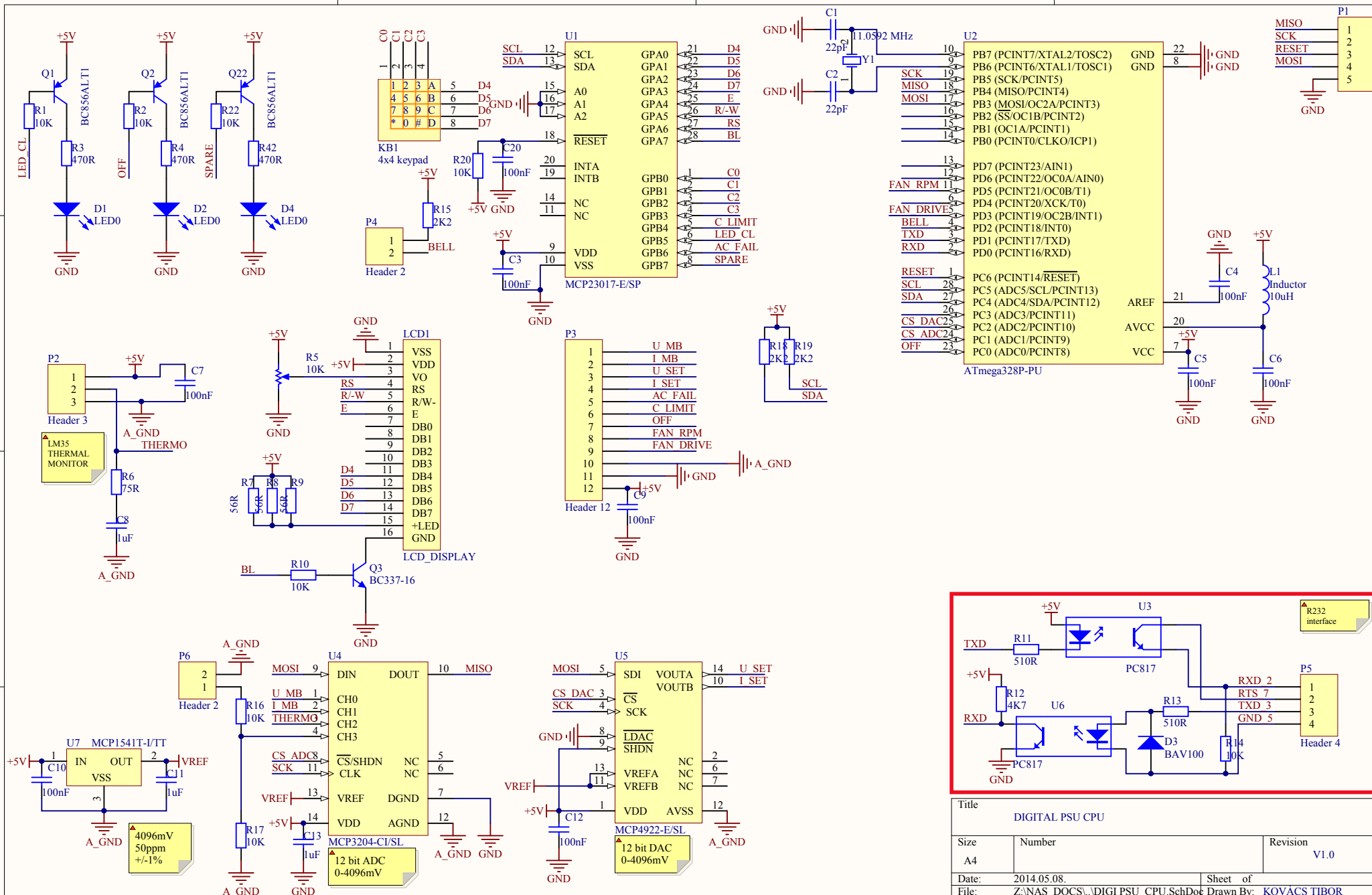
B

C

C

D

D



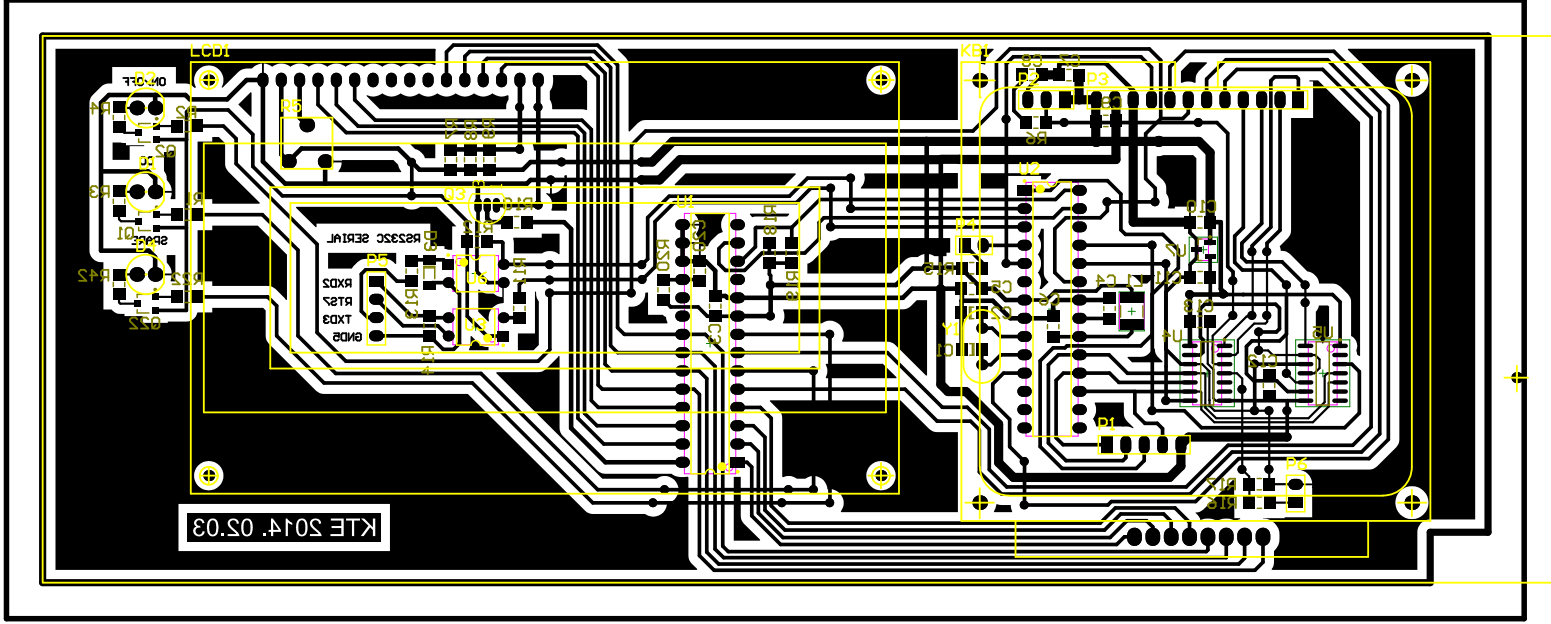
Title		
DIGITAL PSU CPU		
Size	Number	Revision
A4		V1.0
Date:	2014.05.08.	Sheet of
File:	Z:\NAS\DOCS\...\DIGI PSU CPU.SchDoc	Drawn By: KOVACS TIBOR

1

2

3

4



Comment	Description	Designator	Footprint	LibRef	Quantity
C1206	Ceramic Chip Capacitor - Standard	C1, C2	1206	C1206	2
Cap	Capacitor	C3, C4, C5, C6, C7, C8, C9, C10, C11, C12, C13, C20	8-1206	Cap	12
LED0	Typical INFRARED GaAs LED	D1, D2, D4	MYDIODE0.1	LED0	3
BAV100	General-purpose Diode	D3	SOD80C	BAV100	1
4x4 keypad		KB1	4x4 keypad	4x4 keypad	1
Inductor	Inductor	L1	INDC4532	Inductor	1
LCD_DISPLAY		LCD1	4x20LCD	LCD_DISPLAY	1
Header 5	Header, 5-Pin	P1	HDR1X5	Header 5	1
Header 3	Header, 3-Pin	P2	HDR1X3	Header 3	1
Header 12	Header, 12-Pin	P3	HDR1X12	Header 12	1
Header 2	Header, 2-Pin	P4, P6	HDR1X2	Header 2	2
Header 4	Header, 4-Pin	P5	HDR1X4	Header 4	1
BC856ALT1	General Purpose Transistor PNP Silicon	Q1, Q2, Q22	318-08	BC856ALT1	3
BC337-16	Amplifier Transistor NPN Silicon	Q3	29-04	BC337-16	1
Res2	Resistor	R1, R2, R3, R4, R6, R7, R8, R9, R10, R11, R12, R13, R14, R15, R16, R17, R18, R19, R20, R22, R42	8-1206	Res2	21
RPot	Potentiometer	R5	MYPOT22	RPot	1
MCP23017-E/ SP	16-Bit I/O Expander with Serial Interface, 28-Pin SPDIP, Extended Temperature	U1	SPDIP300-SP28	MCP23017-E/ SP	1
ATmega328P-PU	8-bit AVR Microcontroller, 32KB Flash, 1KB EEPROM, 2KB SRAM, 28-pin PDIP, Industrial Grade (-40°C to 85°C)	U2	28P3	ATmega328P-PU	1
PC817	4-Pin Phototransistor Optocoupler	U3, U6	DIP-4	Optoisolator1	2
MCP3204-CI/SL	2.7V 4-Channel/ 8-Channel 12-Bit A/D Converters with SPI Serial Interface, 14-Pin SOIC 150mil, C Performance Grade, Industrial Temperature	U4	SOIC-SL14_N	MCP3204-CI/SL	1
MCP4922-E/ SL	12-Bit DAC with SPI Interface, 14-Pin SOIC 150mil, Extended Temperature	U5	SOIC-SL14_N	MCP4922-E/ SL	1
MCP1541T-I/TT	4.096V Voltage Reference, 3-Pin SOT-23, Industrial Temperature, Tape and Reel	U7	SOT-23-TT3_N	MCP1541T-I/TT	1
11.0592 MHz	Crystal Oscillator	Y1	MYXTAL	XTAL	1