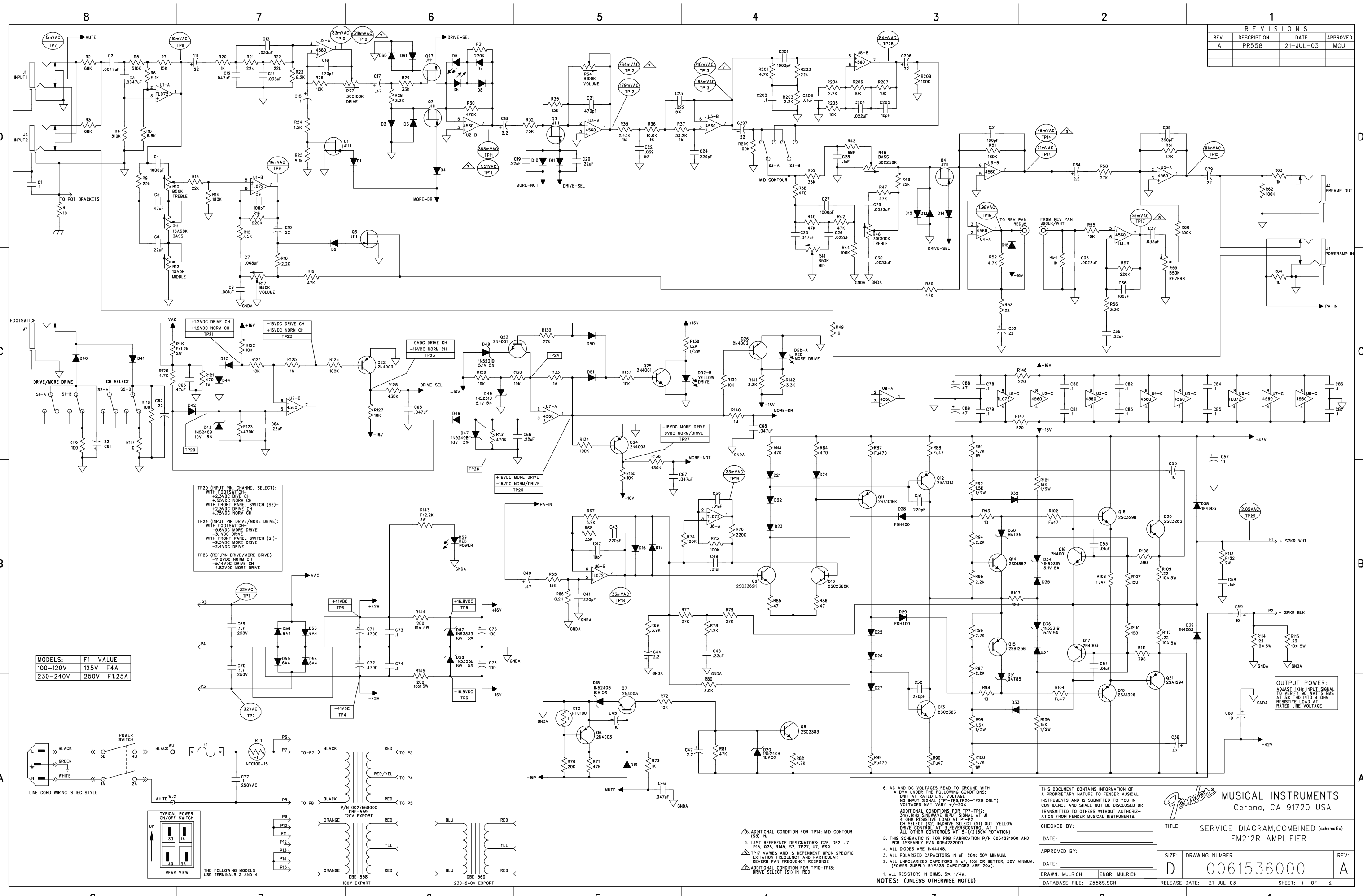
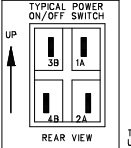
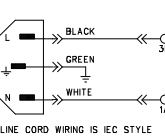


REVISIONS			
REV.	DESCRIPTION	DATE	APPROVED
A	PR558	21-JUL-03	MCU

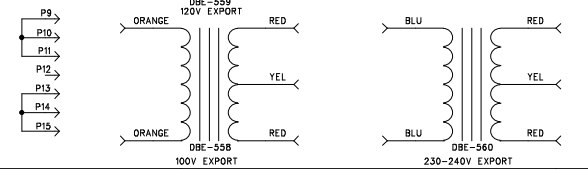


TP20 (INPUT PIN, CHANNEL SELECT):
 WITH FOOTSWITCH: +2.3VDC DIVE CH, +3.5VDC NORM CH
 WITH FRONT PANEL SWITCH (S2): +2.3VDC DIVE CH, +2.7VDC NORM CH
 TP24 (INPUT PIN DRIVE/MORE DRIVE):
 WITH FOOTSWITCH: +5.0VDC MORE DRIVE, -3.1VDC DIVE CH
 WITH FRONT PANEL SWITCH (S1): -9.3VDC MORE DRIVE, -2.4VDC DIVE CH
 TP26 (REF. PIN DRIVE/MORE DRIVE):
 +16.8VDC NORM CH, -5.14VDC DIVE CH, -4.82VDC MORE DRIVE

MODELS:	F1 VALUE
100-120V	125V F4A
230-240V	250V F1.25A



THE FOLLOWING MODELS USE TERMINALS 3 AND 4



- AC AND DC VOLTAGES READ TO GROUND WITH A DVM UNDER THE FOLLOWING CONDITIONS:
 NO INPUT SIGNAL (TP1-TP6, TP20-TP29 ONLY)
 VOLTAGES MAY VARY +/-20%
 ADDITIONAL CONDITIONS FOR TP7-TP19:
 50mV RMS SINEWAVE INPUT SIGNAL AT J1
 2 OHM RESISTIVE LOAD AT P1-TP2
 CH SELECT (S2) MORE DRIVE SELECT (S1) OUT YELLOW DRIVE CONTROL AT 3 REVERB CONTROL AT 1
 ALL OTHER CONTROLS AT 5-1/2 (50K ROTATION)
- THIS SCHEMATIC IS FOR P08 FABRICATION P/N 005428000 AND PCB ASSEMBLY P/N 005428200
- ALL DIODES ARE IN4444B.
- ALL POLARIZED CAPACITORS IN uF, 50V MINIMUM.
- ALL UNPOLARIZED CAPACITORS IN uF, 10V OR BETTER; 50V MINIMUM. (POWER SUPPLY BYPASS CAPACITORS ARE 20%).
- ALL RESISTORS IN OHMS, 5%; 1/4W.

NOTES: (UNLESS OTHERWISE NOTED)

THIS DOCUMENT CONTAINS INFORMATION OF A PROPRIETARY NATURE TO FENDER MUSICAL INSTRUMENTS AND IS SUBMITTED TO YOU IN CONFIDENCE AND SHALL NOT BE DISCLOSED OR TRANSMITTED TO OTHERS WITHOUT AUTHORIZATION FROM FENDER MUSICAL INSTRUMENTS.

CHECKED BY: _____
 DATE: _____
 APPROVED BY: _____
 DATE: _____
 DRAWN: MULRICH ENGR: MULRICH
 DATABASE FILE: 7558S.SCH

Fender MUSICAL INSTRUMENTS
 Corona, CA 91720 USA

TITLE: SERVICE DIAGRAM, COMBINED (schematic)
 FM212R AMPLIFIER

SIZE: DRAWING NUMBER
 D 0061536000

REV: A

RELEASE DATE: 21-JUL-03 SHEET: 1 OF 2