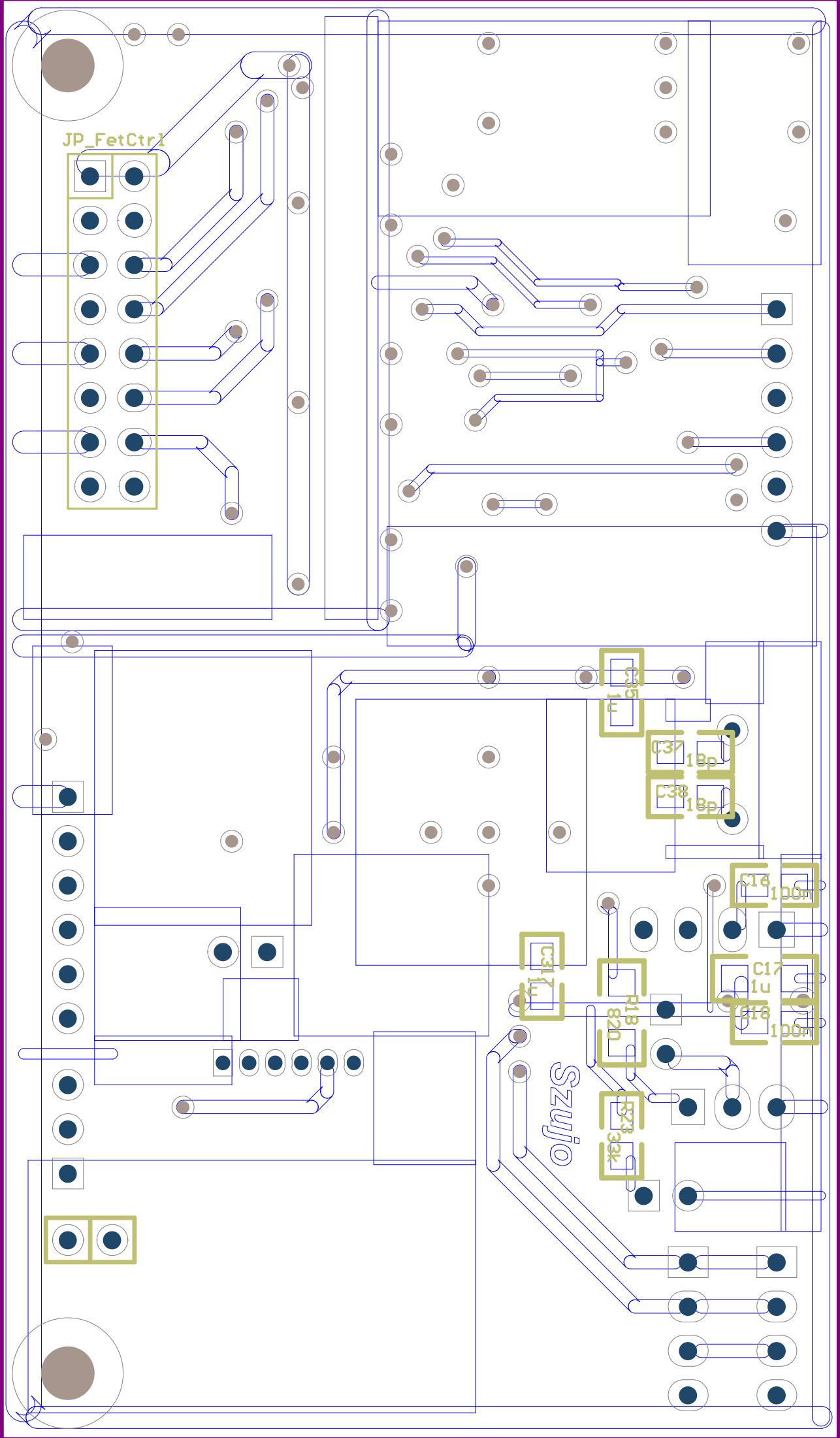
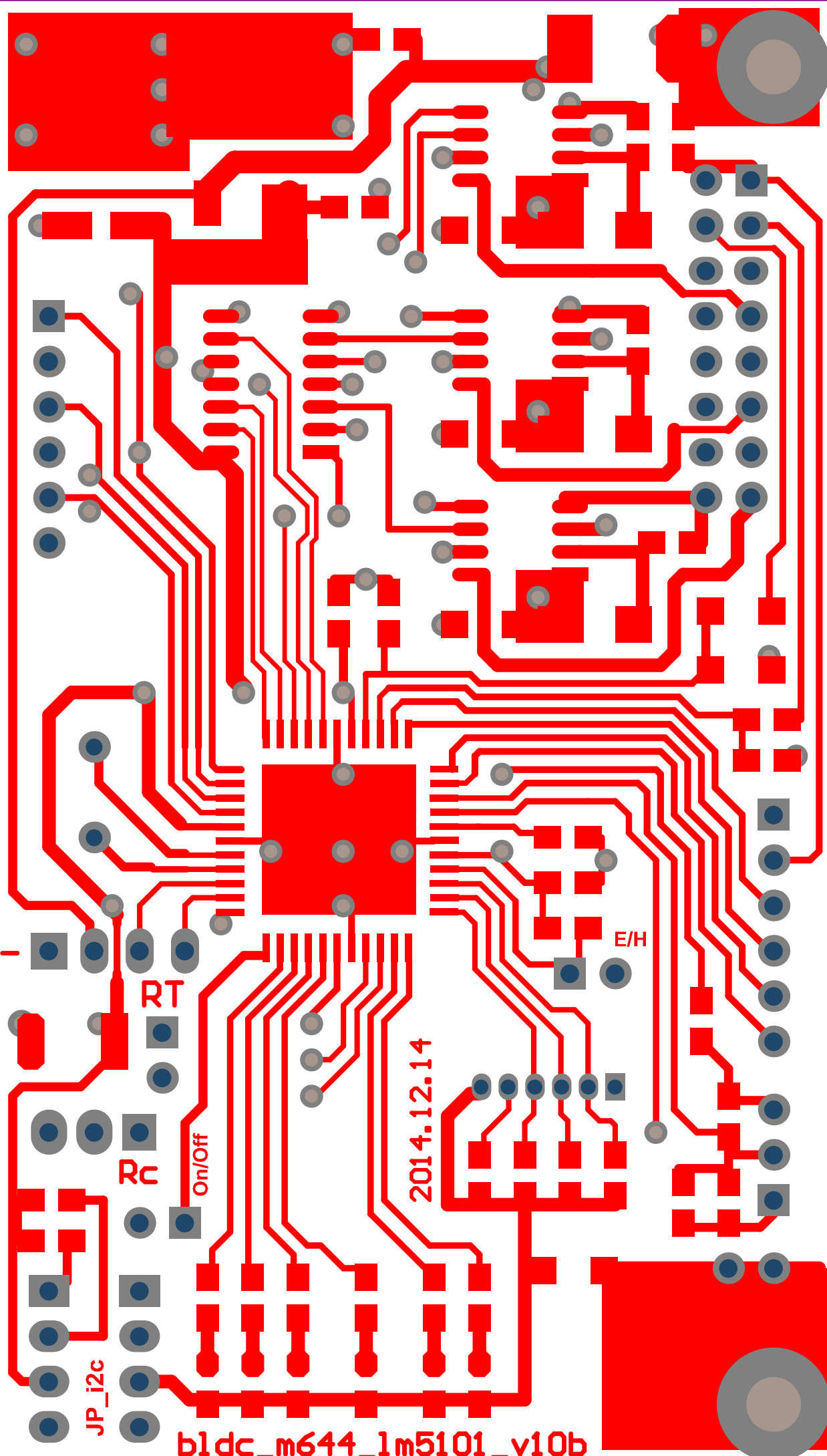


2014.12.14





RT

Rc

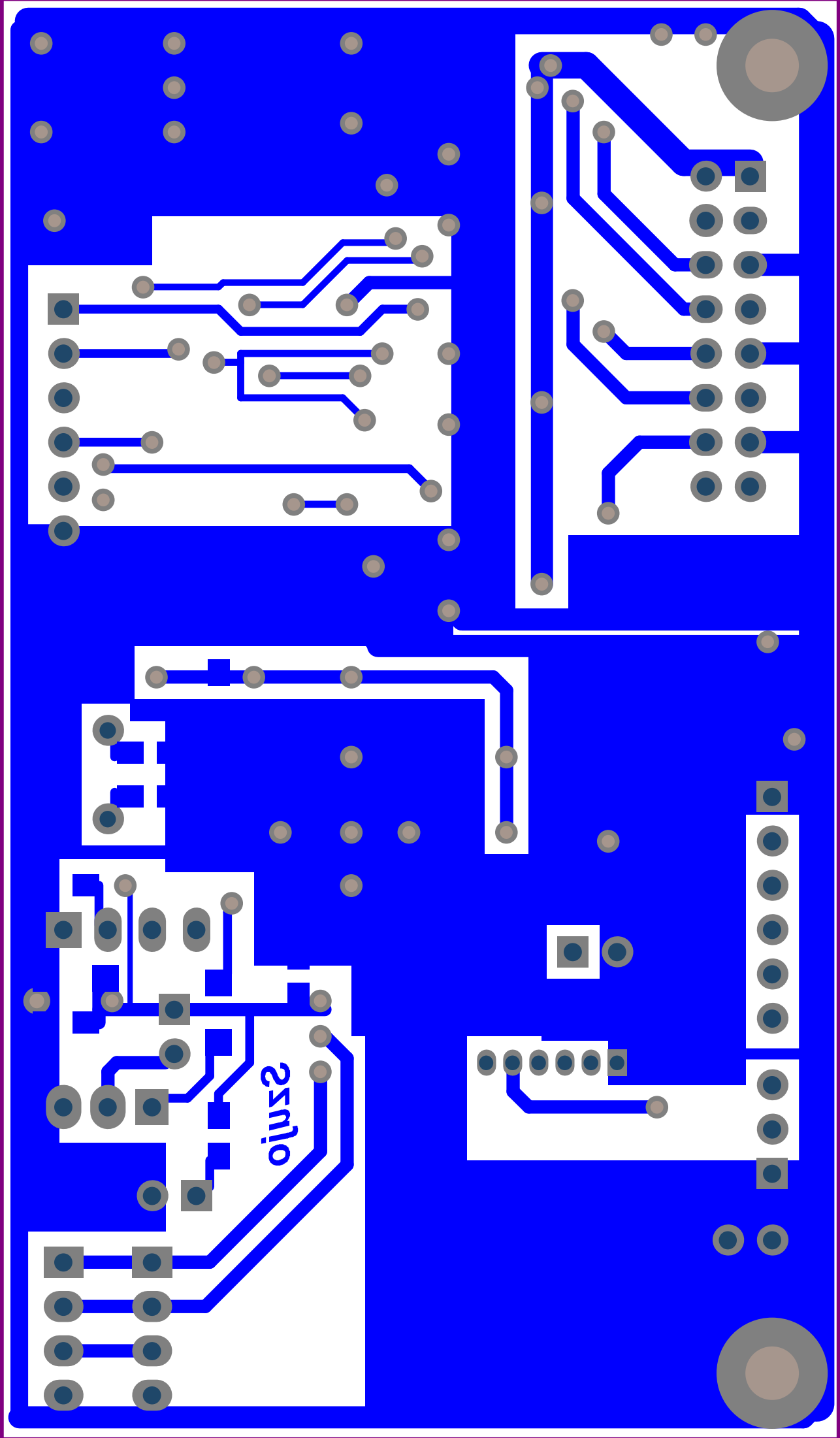
On/Off

2014.12.14

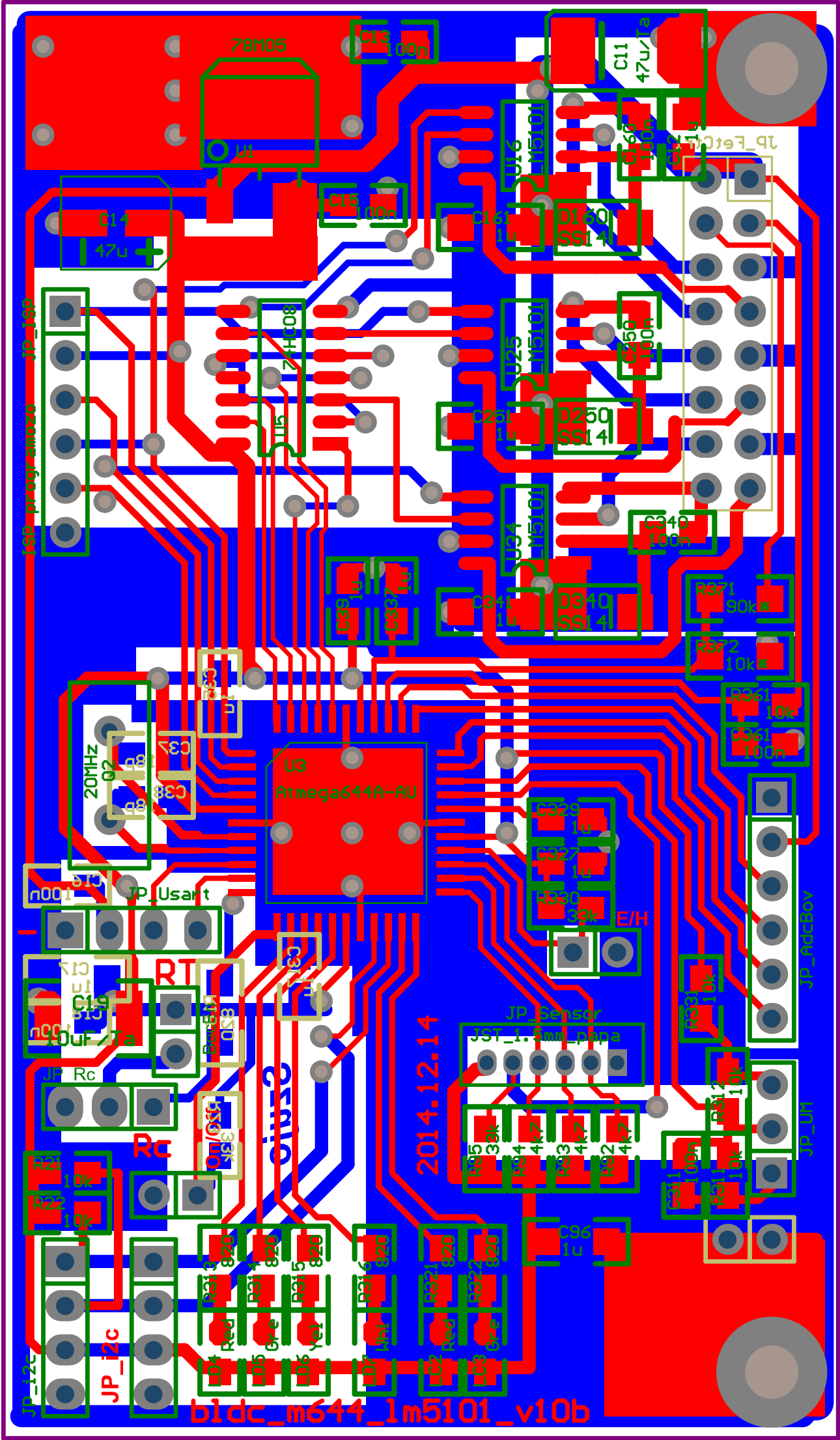
E/H

JP_i2c

blcdc_m644_lm5101_v10b



ojuz2



78M05

C13 100n

C11 47u/Ta

JP_programo

C14 47u

U15 74HC08

U16 LM5101

D1 60 SSI 4

C16 100n

C16 100n

U25 LM5101

D2 50 SSI 4

C25 100n

C34 100n

U34 LM5101

D3 40 SSI 4

C34 100n

R37 30k

R37 10k

R36 10k

C36 100n

20MHz C2

U3 Atmega644-AU

JP_Usart

R35 3k

R34 4k7

R33 4k7

R32 4k7

C19 47u/Ta

RT

U18 74HC08

JP_Sensor

R31 10k

R30 10k

R31 10k

JP_Rc

Rc

R1 10k

R2 10k

R3 10k

R4 10k

R5 10k

R6 10k

R7 10k

R8 10k

R9 10k

R10 10k

R11 10k

R12 10k

JP_FactBoy

JP_U1

bldc_m644_lm5101_v10b

2014.12.14