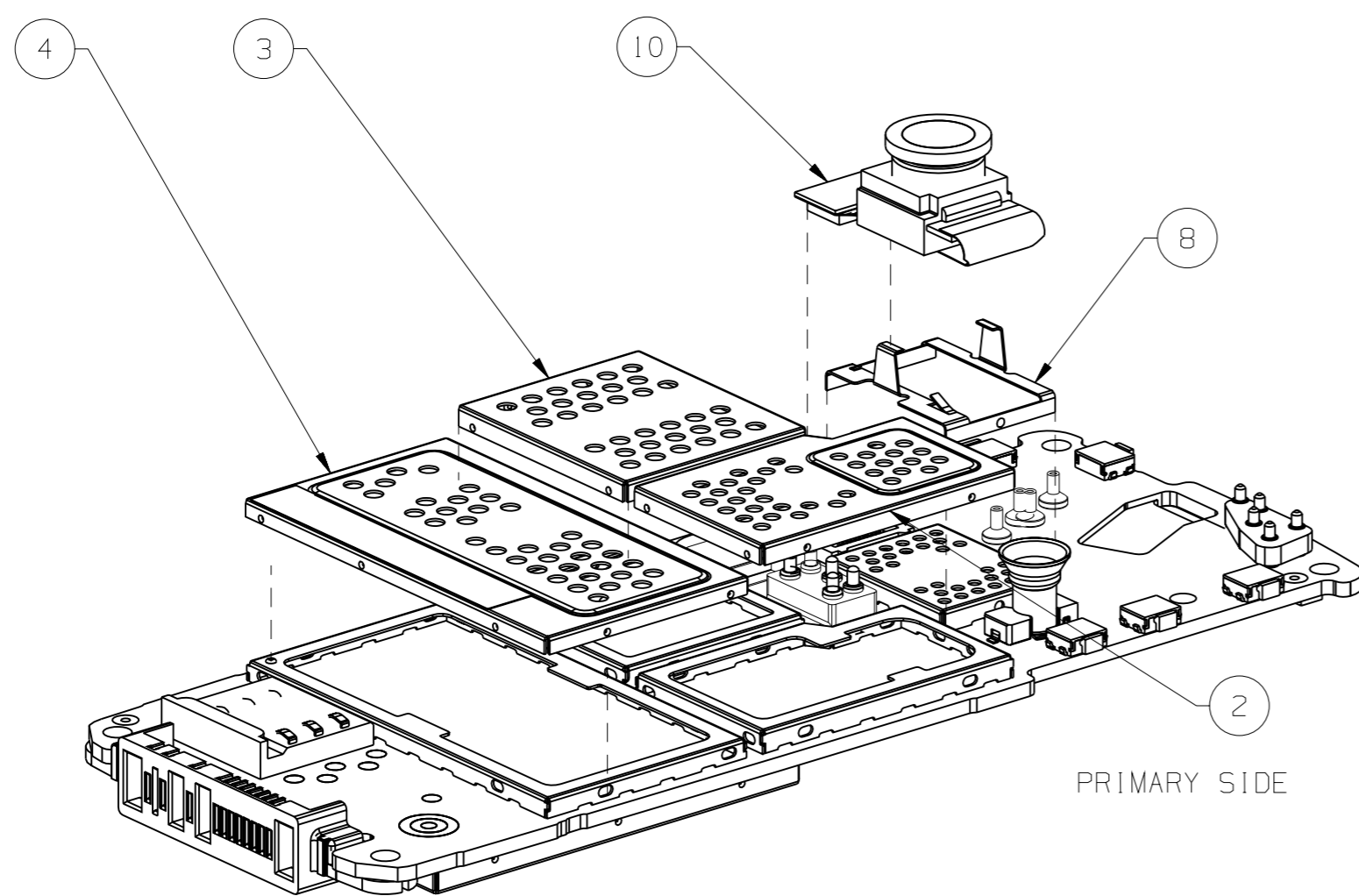
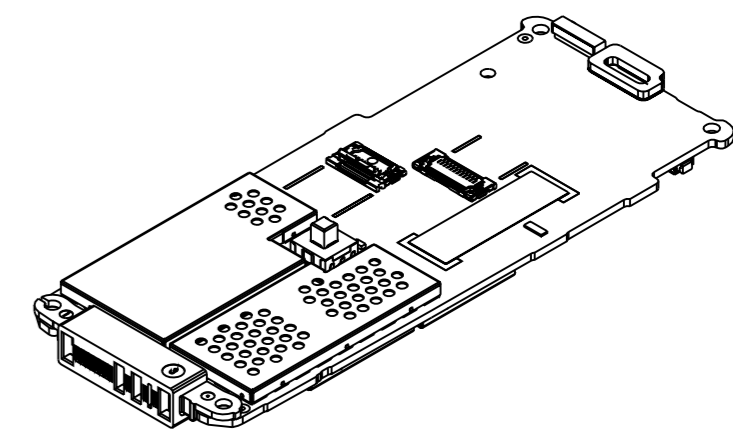


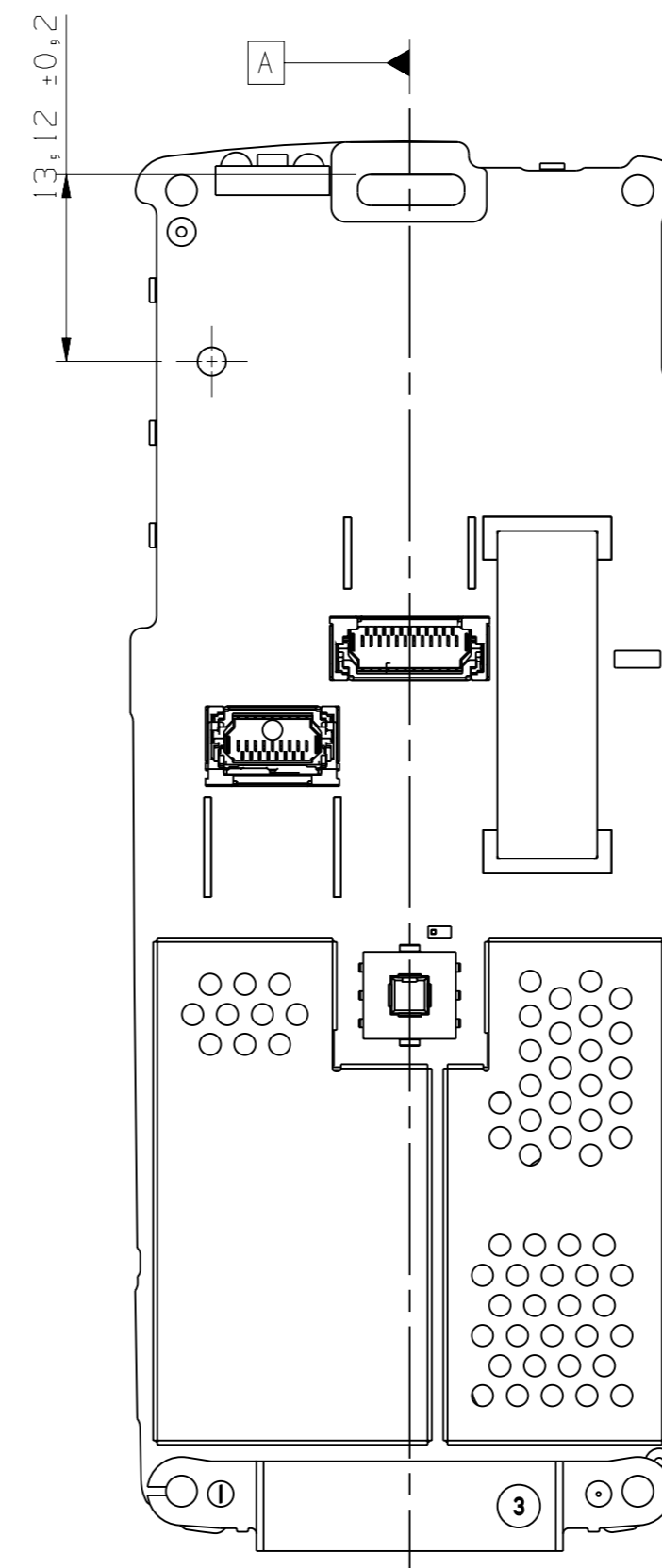
SECONDARY SIDE



PRIMARY SIDE



Scale 1:1



- ① PCB Assembly, ROA 128 0351/2
- ② Shieldcan lid PA, SXA 109 3056
Press down all four sides to end
- ③ Shieldcan lid ING, SXA 109 3057
Press down all four sides to end
- ④ Shieldcan lid MEM Assy, SXK 109 5636
Press down all four sides to end
- ⑤ Shieldcan lid BB Assy, left, SXK 109 5335
Press down all four sides to end
- ⑥ Shieldcan lid BB, right, SXA 109 3062
Press down all four sides to end
- ⑦ Sound channel gasket, SXA 109 3006
Place with adhesive towards PCB
- ⑧ Camera holder, SXA 109 3070
Assemble camera holder before camera assembly.
Press down two sides to end.
- ⑨ System connector, RNV 799 13
Slide to end
- ⑩ Camera module / CIF, KNC 201 01
Mount connector, assemble camera module into camera holder

Note:
For alignment information of datum plane A check document 151 88-ROA 128 0351/2

Approved According to 00021-LXE 107 42/1

Sony Ericsson		Prepared (Also Subject Responsible if Other)	
Drawing Rules ISO		SEM/GUR/MBN Mikael Häll	Rev
Tolerance		SEM/GUR/MBNC (T Karlelid)	Date 2003-03-27 B
±0.1, ±1°		Product Name	
Reference 13042-sxk1095195_c		PBA Unit complete	
Scale 2:1 Units mm Size A2		Document No.	She.
		151 88-SXK 109 5195 Uen	1 (1)