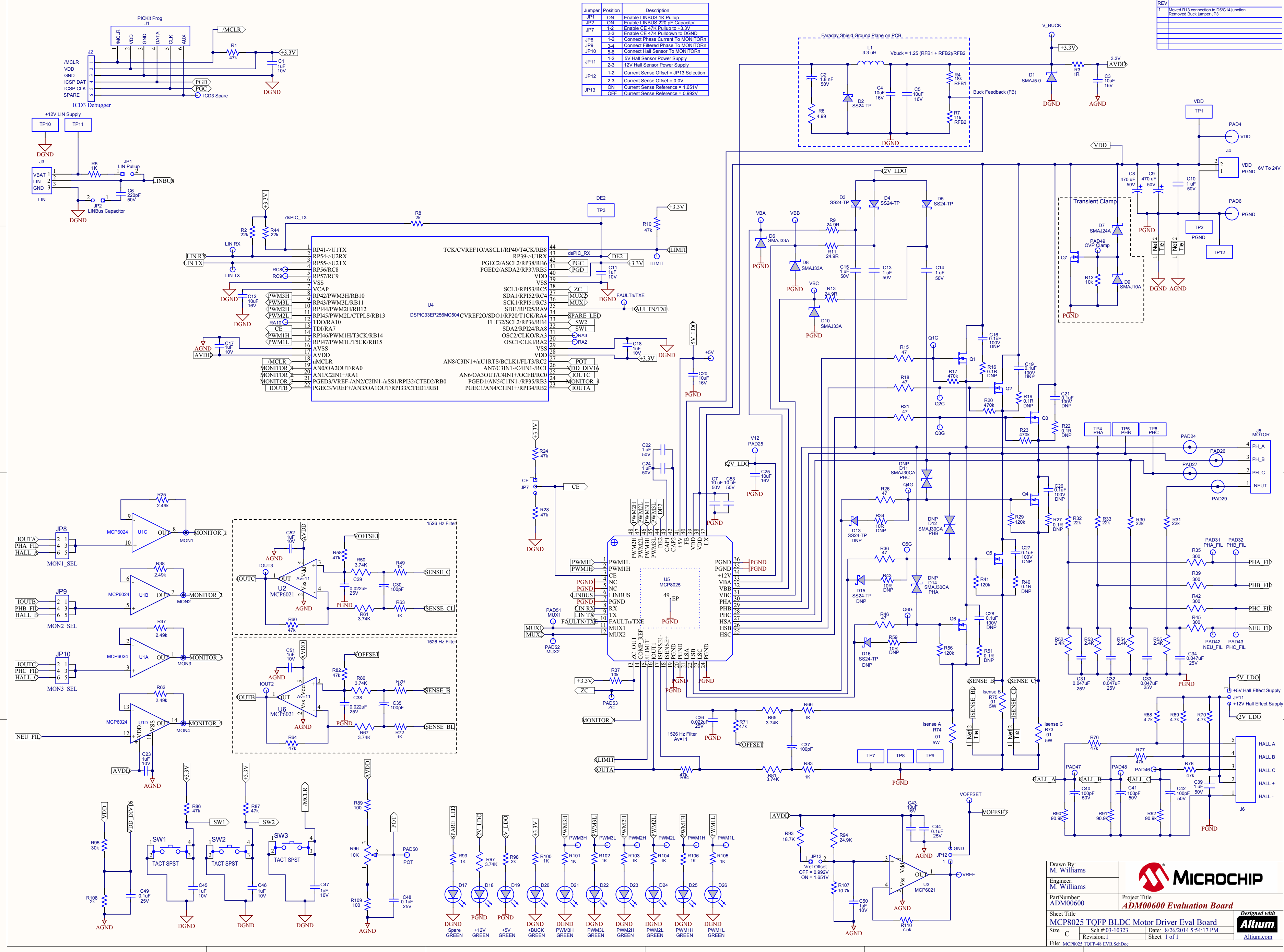


Jumper	Position	Description
JP1	ON	Enable LINBUS 1K Pullup
JP2	ON	Enable LINBUS 220pF Capacitor
JP7	1-2	Enable CE 47K Pullup to +3.3V
JP8	2-3	Enable CE 47K Pullup to DGND
JP9	1-2	Connect Phase Current To MONITORn
JP10	3-4	Connect Filtered Phase To MONITORn
JP11	1-2	5V Hall Sensor Power Supply
JP12	2-3	12V Hall Sensor Power Supply
JP13	1-2	Current Sense Offset = JP13 Selection
	2-3	Current Sense Offset = 0.0V
	ON	Current Sense Reference = 1.651V
	OFF	Current Sense Reference = 0.992V

REV	Description
1	Moved R13 connection to D5/C14 junction Removed Buck Jumper JP3



Drawn By: M. Williams  
 Engineer: M. Williams  
 Part Number: ADM00600  
 Project Title: **ADM00600 Evaluation Board**  
 Sheet Title: MCP8025 TOFP BLDC Motor Driver Eval Board  
 Sch #: 03-10323 Date: 8/26/2014 5:54:17 PM  
 Size: C Revision: 1 Sheet 1 of 1  
 File: MCP8025 TOFP-48 EVB SchDoc

**MICROCHIP**  
**Altium**  
 Designed with Altium.com