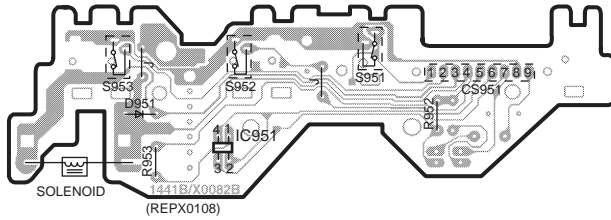


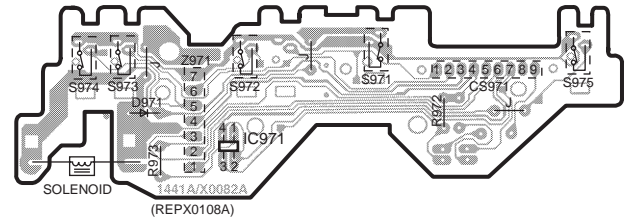
■ ELECTRICAL PARTS LOCATION

Ref. No.	Lo. No.	Ref. No.	Lo. No.	Ref. No.	Lo. No.	Ref. No.	Lo. No.	Ref. No.	Lo. No.	Ref. No.	Lo. No.	Ref. No.	Lo. No.	Ref. No.	Lo. No.
D MECHANISM P.C.B. (DECK 1)															
IC951	3B	S951	3B	S952	3B	S953	3A	CS951	3C	R952	3C	R953	3A		
D951	3A														
C MECHANISM P.C.B. (DECK 2)															
IC971	3E	Z971	3E	S972	3E	S974	3D	S975	3F	CS971	3F	R972	3F	R973	3D
D971	3D	S971	3E	S973	3D										

D MECHANISM P.C.B. (DECK1)



C MECHANISM P.C.B. (DECK2)



Note for IC951 replacement

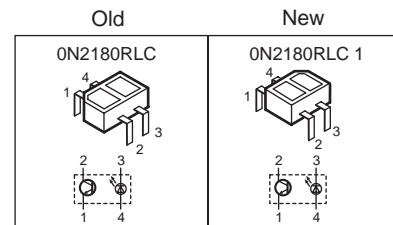
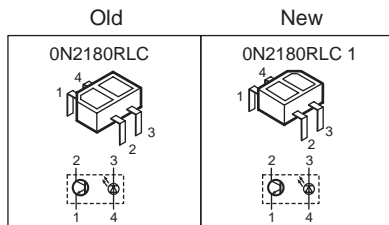
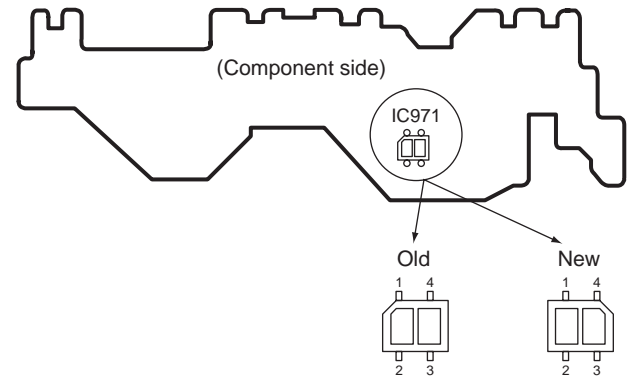
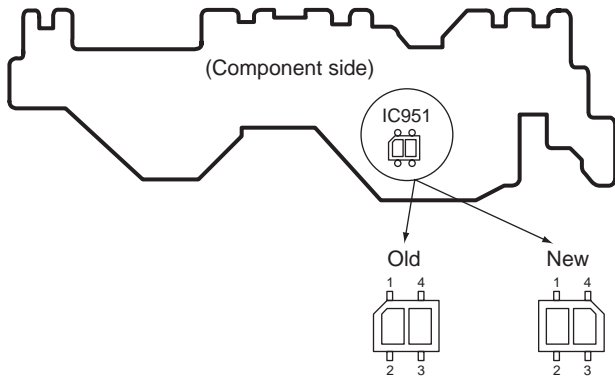
- Two different types (old or new) parts are mounted on P.C.B. as for IC951.
- When servicing, care to replace the parts due to those shape.
- Replacement procedures

	Parts No.	Direction	Remarks
Old	0N2180RLC	Mount the parts on given position. (Printed pattern on P.C.B.)	Refer to the figure below.
New	0N2180RLC1	Mount the parts so the cut corner is located upper right.	

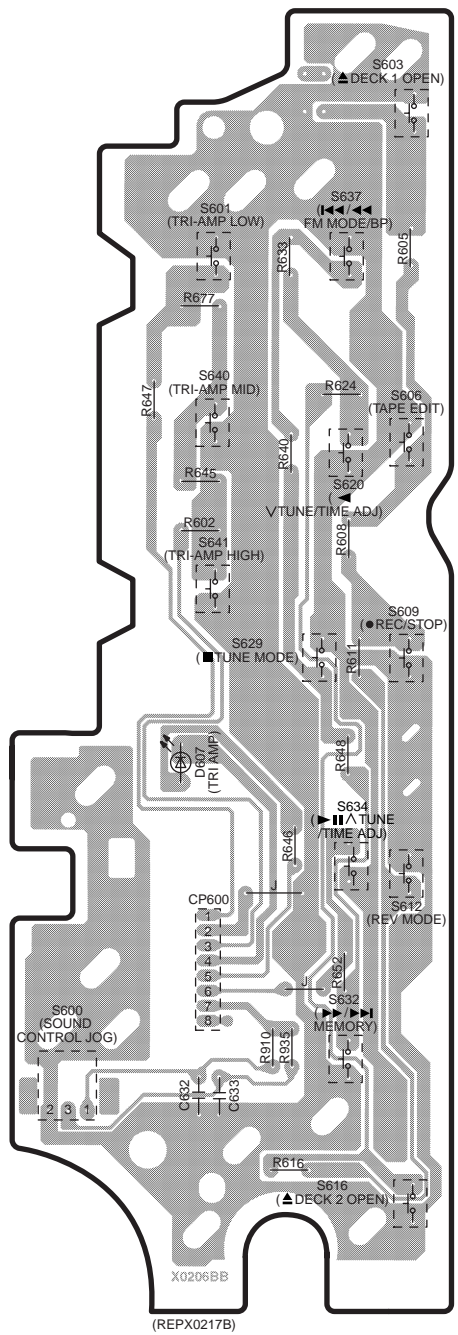
Note for IC971 replacement

- Two different types (old or new) parts are mounted on P.C.B. as for IC971.
- When servicing, care to replace the parts due to those shape.
- Replacement procedures

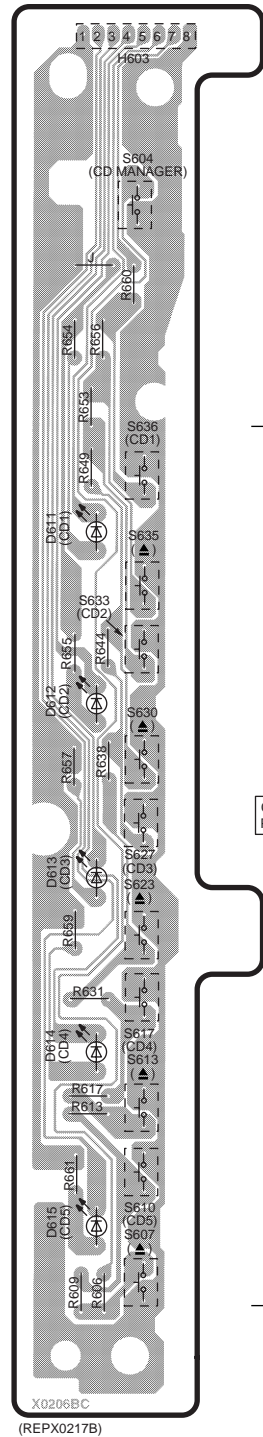
	Parts No.	Direction	Remarks
Old	0N2180RLC	Mount the parts on given position. (Printed pattern on P.C.B.)	Refer to the figure below.
New	0N2180RLC1	Mount the parts so the cut corner is located upper right.	



J OPERATION (2) P.C.B.



I OPERATION (1) P.C.B.



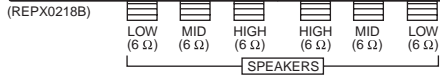
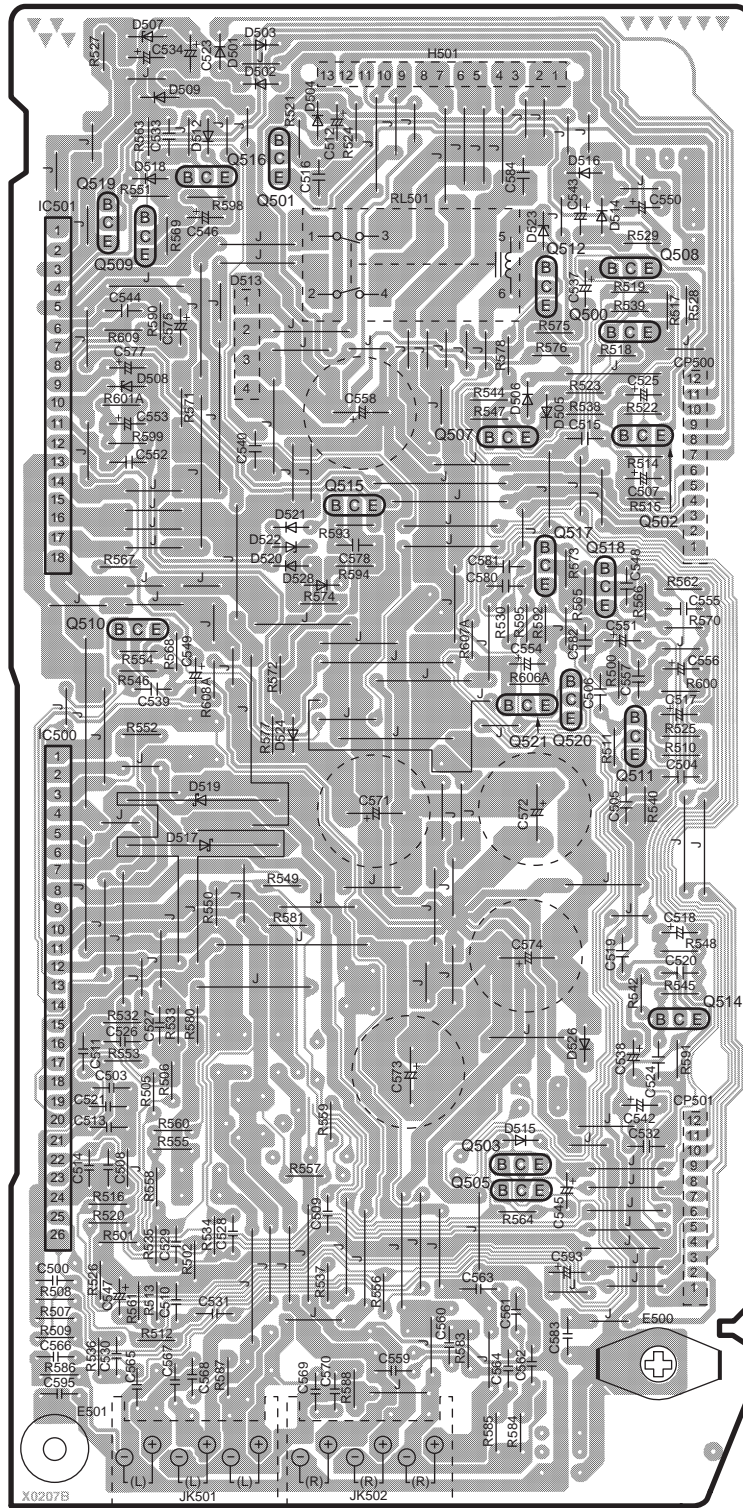
ELECTRICAL PARTS LOCATION

Ref. No.	Lo. No.	Ref. No.	Lo. No.
OPERATION (2) P.C.B.			
D607	5B	R605	3C
S601	3B	R608	4B
S603	2C	R611	5B
S606	4C	R616	7B
S609	5C	R624	3B
S612	6C	R633	3B
S616	7C	R640	4B
S620	4B	R645	4B
S629	5B	R646	5B
S632	6B	R647	3B
S634	5B	R648	5B
S637	3B	R652	6B
S640	4B	R677	3B
S641	4B	R910	6B
SW600	7B	R935	6B
CP600	6B	C632	7B
R602	4B	C633	7B
OPERATION (1) P.C.B.			
D611	4D	R606	7D
D612	5D	R609	7D
D613	5D	R613	6D
D614	6D	R617	6D
D615	7D	R631	6D
S604	2D	R638	5D
S607	7D	R644	4D
S610	7D	R649	4D
S613	6D	R653	3D
S617	6D	R654	3D
S623	6D	R655	4D
S627	5D	R656	3D
S630	5D	R657	5D
S633	4D	R659	6D
S635	4D	R660	3D
S636	4D	R661	7D
H603	2D		

CD DIRECT
PLAY/OPEN

X0206BC
(REPX0217B)

POWER AMP P.C.B.



ELECTRICAL PARTS LOCATION

Ref. No.	Lo. No.	Ref. No.	Lo. No.	Ref. No.	Lo. No.
POWER AMP P.C.B.					
IC500	6A	R525	5D	C505	5D
IC501	3A	R526	7A	C506	4D
Q500	3D	R527	1A	C507	3D
Q501	2B	R528	3D	C508	6A
Q502	3D	R529	2D	C509	7B
Q503	6C	R530	4C	C510	7B
Q505	7C	R532	6B	C511	6A
Q507	3C	R533	6B	C512	2B
Q508	2D	R534	7B	C513	6A
Q509	2B	R535	7B	C514	6A
Q510	4B	R536	7A	C515	3D
Q511	5D	R537	7B	C516	2B
Q512	2C	R538	3D	C517	4D
Q514	7D	R539	3D	C518	5D
Q515	3C	R540	5D	C519	6D
Q516	2B	R542	6D	C520	6D
Q517	4C	R544	3C	C521	6A
Q518	4D	R545	6D	C523	1B
Q519	2A	R546	4B	C524	6D
Q520	4C	R547	3C	C525	3D
Q521	4D	R548	5D	C526	6B
D501	1B	R549	5B	C527	6B
D502	2B	R550	5B	C528	7B
D503	1B	R551	2B	C529	7B
D504	2B	R552	5B	C530	7A
D505	3C	R553	6B	C531	7B
D506	3C	R554	4B	C532	6D
D507	1B	R555	6B	C533	2B
D508	3D	R556	7C	C534	1B
D509	2B	R557	7B	C537	3D
D512	2B	R558	7B	C538	6D
D513	3B	R559	6B	C539	4B
D514	2D	R560	6B	C540	3B
D515	6C	R561	7B	C542	6D
D516	2D	R562	4D	C543	2D
D517	5B	R563	2B	C544	3B
D518	2B	R564	7C	C545	7D
D519	5B	R565	4D	C546	2B
D520	4B	R566	4D	C547	7A
D521	4B	R567	4B	C548	4D
D522	4B	R568	4B	C549	4B
D523	2C	R569	2B	C550	2D
D524	5B	R570	4D	C551	4D
D526	6D	R571	3B	C552	3B
D528	4B	R572	4B	C553	3B
RL501	2C	R573	4D	C554	4C
CP500	3D	R574	4C	C555	4D
CP501	7D	R575	3C	C556	4D
JK501	8B	R576	3C	C557	4D
JK502	8C	R577	5B	C558	3C
E500	7D	R578	3C	C559	7C
E501	8A	R580	6B	C560	7C
H501	2C	R581	5B	C561	7C
R500	4D	R583	7C	C562	7C
R501	7A	R584	8C	C563	7C
R502	7B	R585	8C	C564	7C
R505	6B	R586	7A	C565	7B
R506	6B	R587	7B	C566	7A
R507	7A	R588	7C	C567	7B
R508	7A	R590	3B	C568	7B
R509	7A	R591	6D	C569	7B
R510	5D	R592	4C	C570	7B
R511	5D	R593	4C	C571	5C
R512	7B	R594	4C	C572	5C
R513	7B	R595	4C	C573	6C
R514	3D	R598	2B	C574	6C
R515	3D	R599	3B	C575	3B
R516	7A	R600	4B	C577	3B
R517	3D	R601A	3C	C578	4C
R518	3D	R606A	4B	C580	4C
R519	3D	R607A	4C	C581	4C
R520	7A	R608A	4B	C582	4D
R521	2B	R609	3B	C583	7D
R522	3D	C500	7A	C584	2C
R523	3D	C503	6A	C589	7D
R524	2C	C504	5D	C595	7A