

IGNIS

Service Manual

Washing machine

Toploader

AWV 430

Model Version		Page
	AWV 430	
	8584 430 10700	
	Technical data	2 - 3
	Spare part list	4
	Exploded view	5 - 6
	Wiring diagram	7
	Circuit diagram	8
	Program diagram	9
	Family	A1

Technical data

Dimensions

Height	85	cm
Width	40	cm
Depth	60	cm

Weight

Net weight	61	kg
With packing	64	kg

Main connection

Voltage	230 ± 10%	V
Frequency	50	Hz
Power consumption	2.3	kW
Fuse rating	10	A

Drum

Volume	42	l
Wash spin	54	rpm
Speed spinning	400	rpm

Capacity of dry laundry

Cotton/coloured laundry	5/ 4,5	kg
Cotton rapid	3	kg
Easy care	2.5	kg
Easy care rapid	1.5	kg
Delicate	1.5	kg
Wool	1	kg

Pressostat for washing-machine

Level1

Switching point	35 ± 5	mmWc
Reset	15 ± 5	mmWc

Level2

Switching point	65 ± 5	mmWc
Reset	35 ± 5	mmWc

Overflow

Switching point	300 ± 20	mmWc
-----------------	----------	------

Water column drum

Level2

Switching point	50 ± 5	mm
-----------------	--------	----

Overflow

Switching point	285 ± 20	mm
-----------------	----------	----

Nominal current

Contacts:

11 - 12	4 (4)	A
11 - 14	4 (4)	A
21 - 12	4 (4)	A
21 - 24	16 (4)	A
21 - 26	1 (1)	A

Contactsystem:

11 - 12 - 14	jump contacts
21 - 22 - 24	jump contacts
21 - 26	slow action contacts

Door lock

Lock time (0-85°C)	<5"
Unlock time after 30" on	110 ± 30"
Nominal voltage	250 V
Nominal current contacts:	
4 - 5	16 (4) A

Heating element

Kind of heating	Tubular heating element
Nominal voltage	230 V
Nominal power	2050 W
Heat conductor resistance R 25	25,8 ± 5% Ω
Working temperature max.	120 °C

Water inlet valve

Water temperature max.	90	°C
Rated flow > 1 bar	8	l/min.
Pressure range	0.2-10	bar
Nominal voltage	220-240	V
Frequency	50	Hz
Starting voltage 0.2-10 bar	170	V
Nominal current	40	mA
Nominal power	8.8	VA
Nominal resistor (20°C)	3.8 ± 10%	Ω

Drain pump (synchronous)

Nominal voltage	230	V
Nominal current	0.3	A
Nominal consumption	34	W
Frequency	50	Hz
Resistor (coil)	164 ± 7%	Ω
Motor protection	no	
Capacity (1.25m height)	14 ± 2	l/min

Technical data

Program timer

Type	Electromechanical	
Fab.	EC 4839 (Timer A1)	
Nominal voltage	230	V
Frequency	50	Hz
Total positions	60	
Pre wash	pos.	01
Main wash	pos.	06
Rinse	pos.	21
Spin	pos.	33/ 58
Stop	pos.	37/ 60
Ambient temperature	to 70	°C
Storage temperature	to 85	°C

Motor

Type	Asynchronous 2/12 i = 1 : 7.9	
Pulley diameter	41.5	mm
Capacitor	14	μ F
Nominal voltage	230	V
Frequency	50	Hz
Nominal current:		
Washing	1.4	A
Spinnig	3.5	A

Capacitor

Capacity	14	μ F
----------	----	-----

Radio interference supression

Nominal voltage	230	V
Nominal capacity	470nFX1 + 2x22nFY	
Nominal inductance	2 x 0.5	mH
Nominal resistance	680	kΩ

Thermostat Bi-metal 35°C

ON	27 ± 3	°C
OFF	35 ± 4	°C
Contact	normally open	

Thermostat Bi-metal 60°C

ON	40 ± 4	°C
OFF	55 ± 3	°C
Rated voltage	250	V
Rated current	10	A

Thermostat Bi-metal 80°C

ON	60 ± 4	°C
OFF	80 ± 3	°C
Rated voltage	250	V
Rated current	10	A

Push button switch

Main switch	SM
Half load	SHL
Intensive wash	SWI

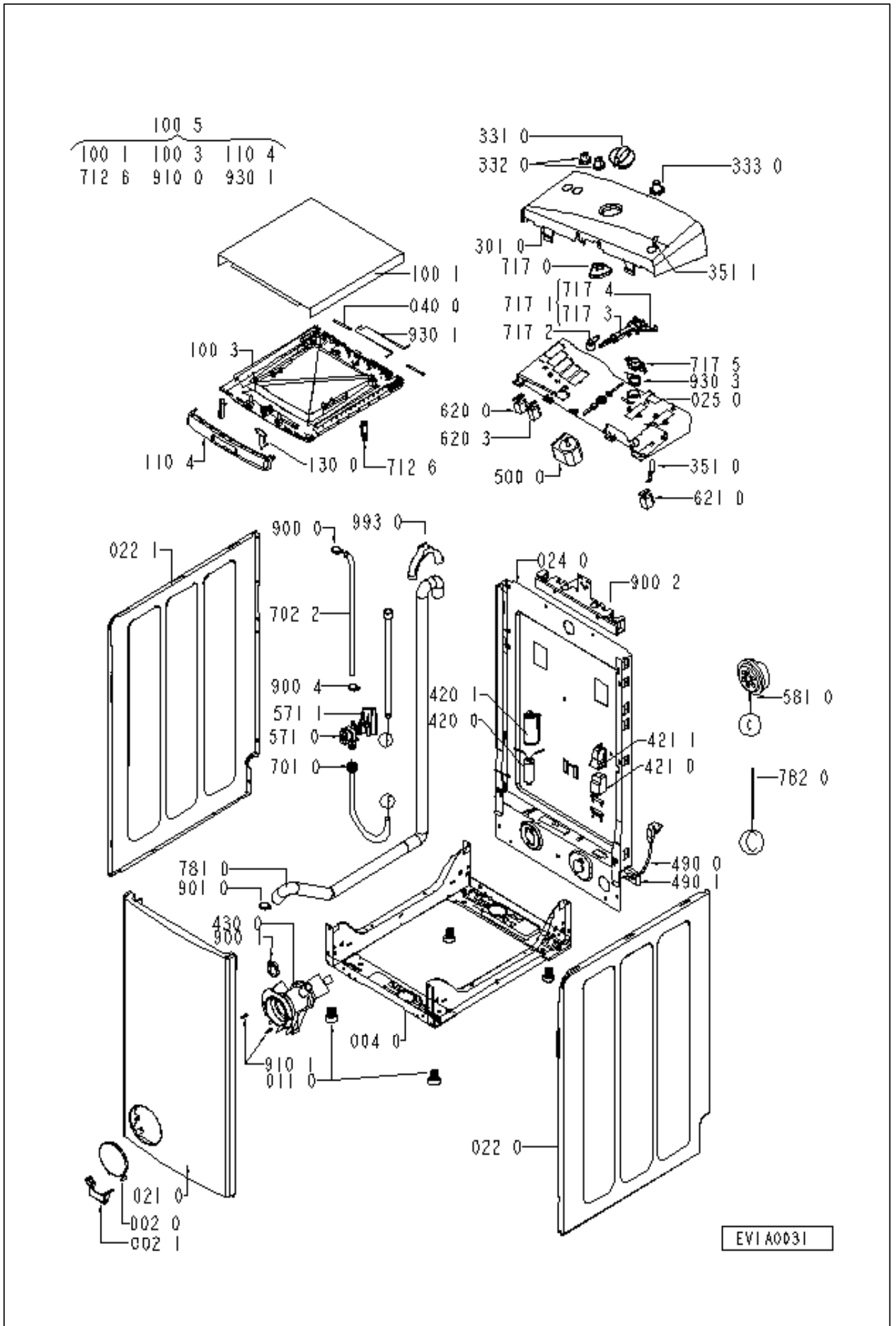
Spare part list

Model AWW 430
Service No. 858443010700
Version 858443010700

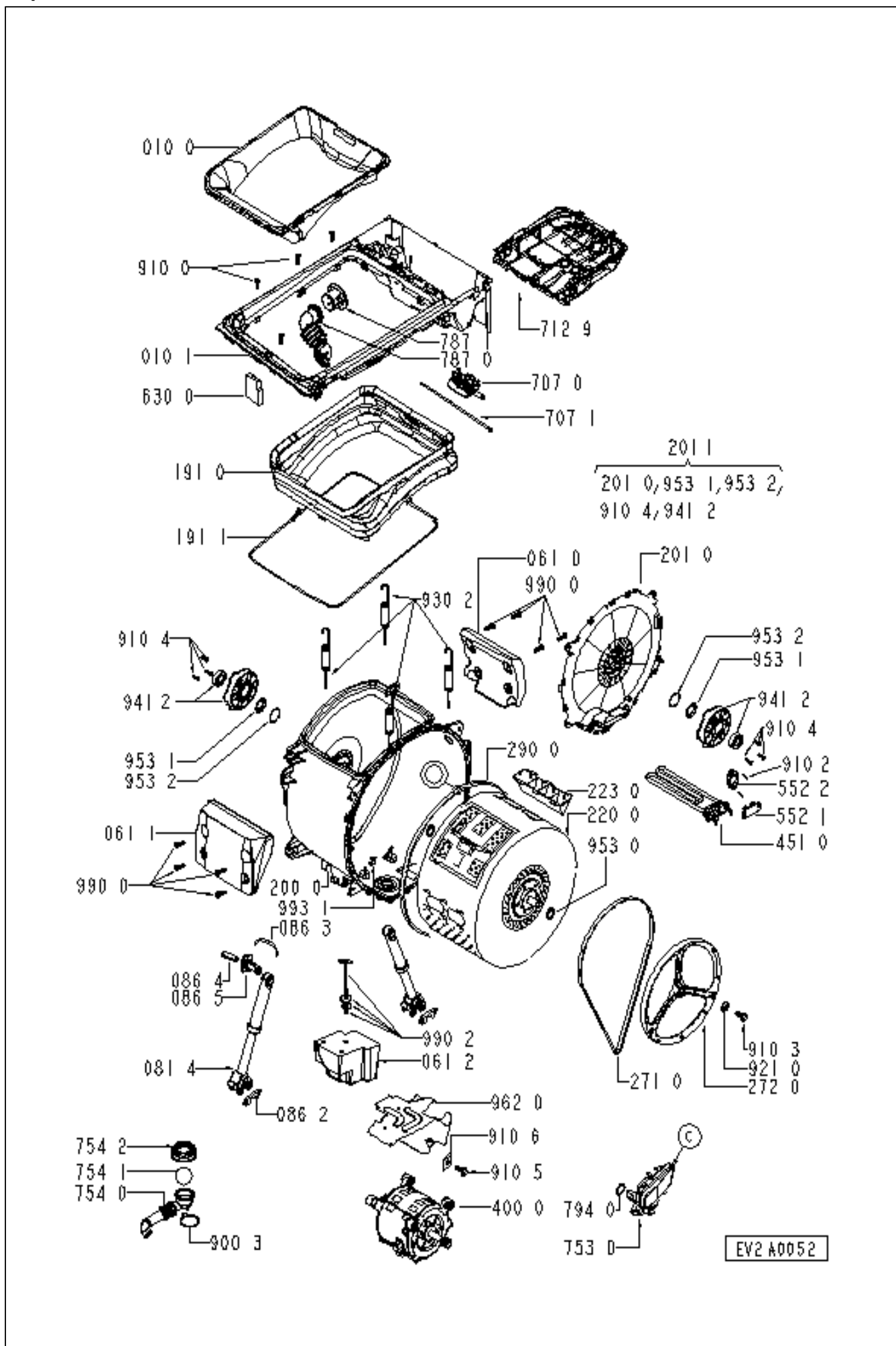
Pos. No.	12NC Code	Description
002 0	4812 459 38025	Flap flat (LR)
002 1	4812 459 38028	Hinge Flap
004 0	4812 440 19625	Drip tray assy
010 0	4812 459 48056	Door frame inner
010 1	4812 459 48057	Door frame outer
011 0	4812 462 48059	Foot
021 0	4812 440 19627	Front,panel
022 0	4812 440 19628	Side panel right
022 1	4812 440 19629	Side panel left
024 0	4812 440 19631	Rear panel
025 0	4812 440 19633	Support
040 0	4812 417 18815	Hinge bolt
061 0	4812 466 88489	Counter weight
061 1	4812 466 88491	Counter weight front
061 2	4812 466 88492	Counter weight bottom
081 4	4812 529 18043	Shock absorber
086 2	4812 401 18412	Stopper
086 3	4812 529 18044	Clamp absorber
086 4	4812 529 18045	Pin f. absorber
086 5	4812 529 18046	Shaft f. absorber
100 1	4812 440 19634	Lid outer
100 3	4812 440 19635	Lid inner
100 5	4812 440 19637	Lid assembly
110 4	4812 440 19639	Handle cpl.
130 0	4812 417 18849	Hook f. Door
191 0	4812 466 68596	Door bellow
191 1	4812 492 98014	Strap f. bellow
200 0	4812 418 18242	Tub 4fix points
201 0	4812 440 19643	Cover f. Tub
201 1	4812 440 19644	Cover cpl.
220 0	4812 418 18243	Drum
223 0	4819 418 49713	Drum lifter
271 0	4812 358 18161	Belt
272 0	4812 528 88082	Pulley 268 mm
290 0	4812 532 68078	Gasket
301 0	4812 452 10144	Control panel AWW 430
331 0	4812 412 58848	Knob Timer LA
332 0	4812 410 28642	Button Options LA
333 0	4812 410 18154	Button
351 0	4812 124 98001	Lamp mains
351 1	4812 124 18002	Cover pilot lamp
400 0	4812 361 58144	Motor 2/12
420 0	4819 121 18313	Capacitor
420 1	4812 121 18196	Cover f. capacitor
421 0	4812 121 18142	Interf.filter 1,00 uF
421 1	4812 121 18197	Cover inter.filter
430 0	4812 360 18472	Pump,draining
451 0	4812 259 28701	Heating element without hole
490 0	4812 321 18066	Cable,mains EU/2m
490 1	4812 321 18067	Strain relief
500 0	4812 282 18682	Timer A1S
552 1	4812 282 18684	Thermostat 35-60 °C
552 2	4812 282 18683	Thermostat 80 °C
571 0	4812 281 28393	Valve,magnet
571 1	4812 281 18049	Cover f. valve

Pos. No.	12NC Code	Description
581 0	4812 271 28396	Pressostat
620 0	4812 276 28368	Switch Options
620 3	4819 410 29044	Switch Options N.O.
621 0	4812 276 18276	Switch ON/OFF
630 0	4812 271 38373	Door lock hybrid
701 0	4819 530 29034	Hose, inlet
702 2	4812 530 28871	Hose valve-dispenser
707 0	4812 526 48044	Nozzle box cold cpl.
707 1	4812 526 48049	Clamp f. nozzle box
712 6	4812 418 68164	Clip soap dispenser
712 9	4812 418 68186	Soap dispenser cpl. 4
717 0	4812 323 18179	Cam A1/A2
717 1	4812 323 18024	Lever metal
717 2	4812 323 18021	Lever adjustment (metal)
717 3	4812 323 18181	Lever adjustment
717 4	4812 323 18182	Lever
717 5	4812 323 18025	Support lever metal
753 0	4812 418 68187	Chamber,air
754 0	4812 530 28938	Drainhose
754 1	4812 530 28832	Lock eco
754 2	4812 530 28829	Flange eco
781 0	4812 530 28953	Drainhose
782 0	4812 530 28941	Hose Pressostat
787 0	4812 530 28942	Hose Air Exaust
787 1	4812 530 28943	Hose Cover
794 0	4812 530 58098	Gasket Airtrap
900 0	4812 290 68157	Strap SNP 8
900 1	4812 401 18431	Clamp to pump
900 2	4812 401 18461	Support cable/hose
900 3	4819 401 18529	Clamp,hose
900 4	4819 401 18362	Strap SNP 8
901 0	4812 401 18462	Clamp,hose drain hose
910 0	4812 502 48347	Screw,selftap f. Lid
910 1	4812 502 38151	Screw 4x14
910 2	4819 502 38288	Screw PLASGOB SP T45
910 3	4812 502 18404	Screw
910 4	4812 502 18423	Screw PT 7x15
910 5	4812 502 18401	Screw M8X 35
910 6	4812 502 18399	Nut Push in M 8
921 0	4812 400 18047	Washer
930 1	4812 492 48161	Torsions spring
930 2	4812 492 48162	Spring
930 3	4812 323 18019	Spring f. lever
941 2	4812 520 28122	Bearing
953 0	4812 325 68001	Shaft seal
953 1	4812 520 28073	Ring counterface
953 2	4812 530 68017	O-Ring
962 0	4812 440 19645	Cover f. Motor
990 0	4812 310 18504	Fixing mat.set front counter
990 2	4812 310 18506	Fixing mat.set bottom
993 0	4819 530 29028	Bow
993 1	4812 290 18025	Clamp heatingelement

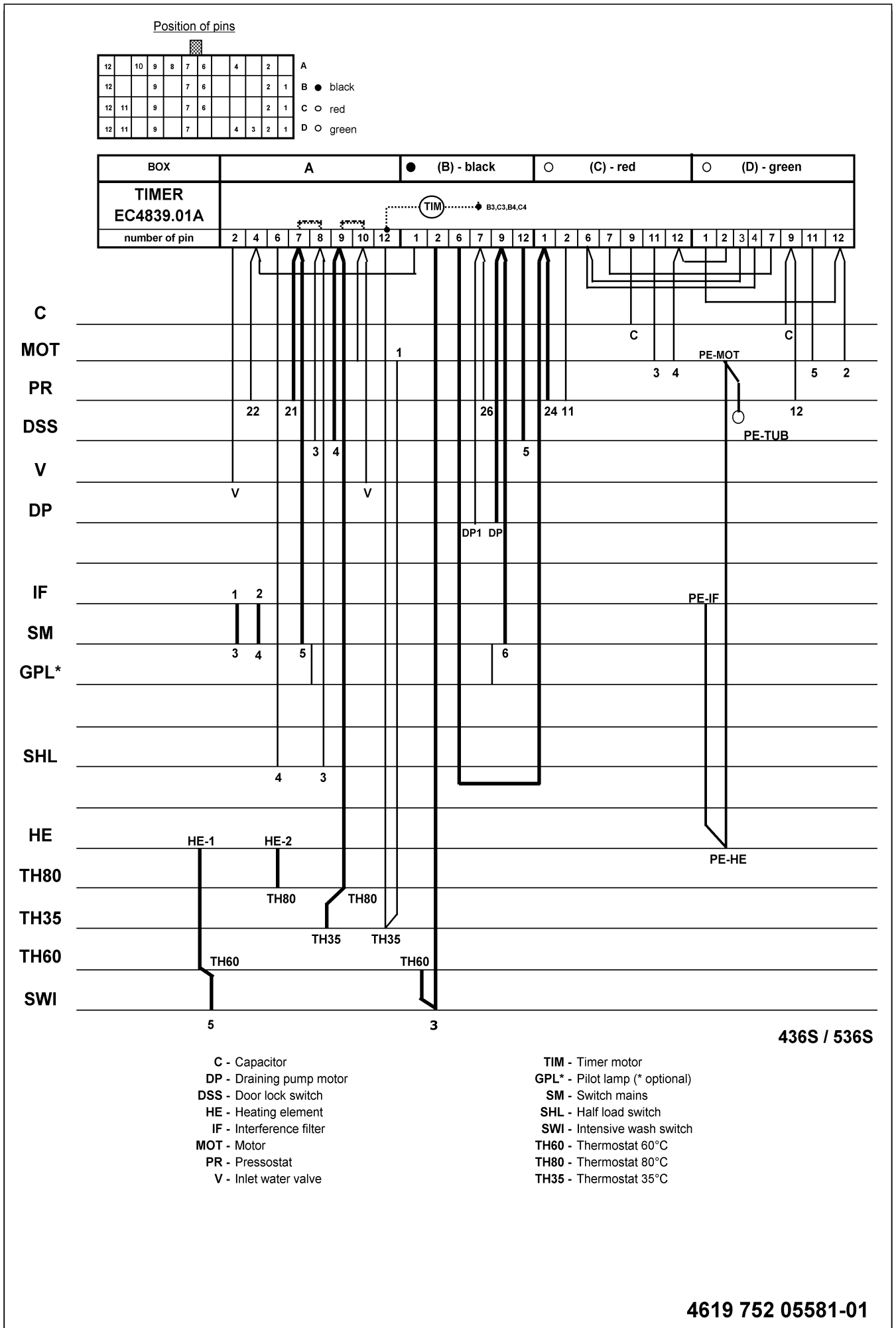
Exploded view



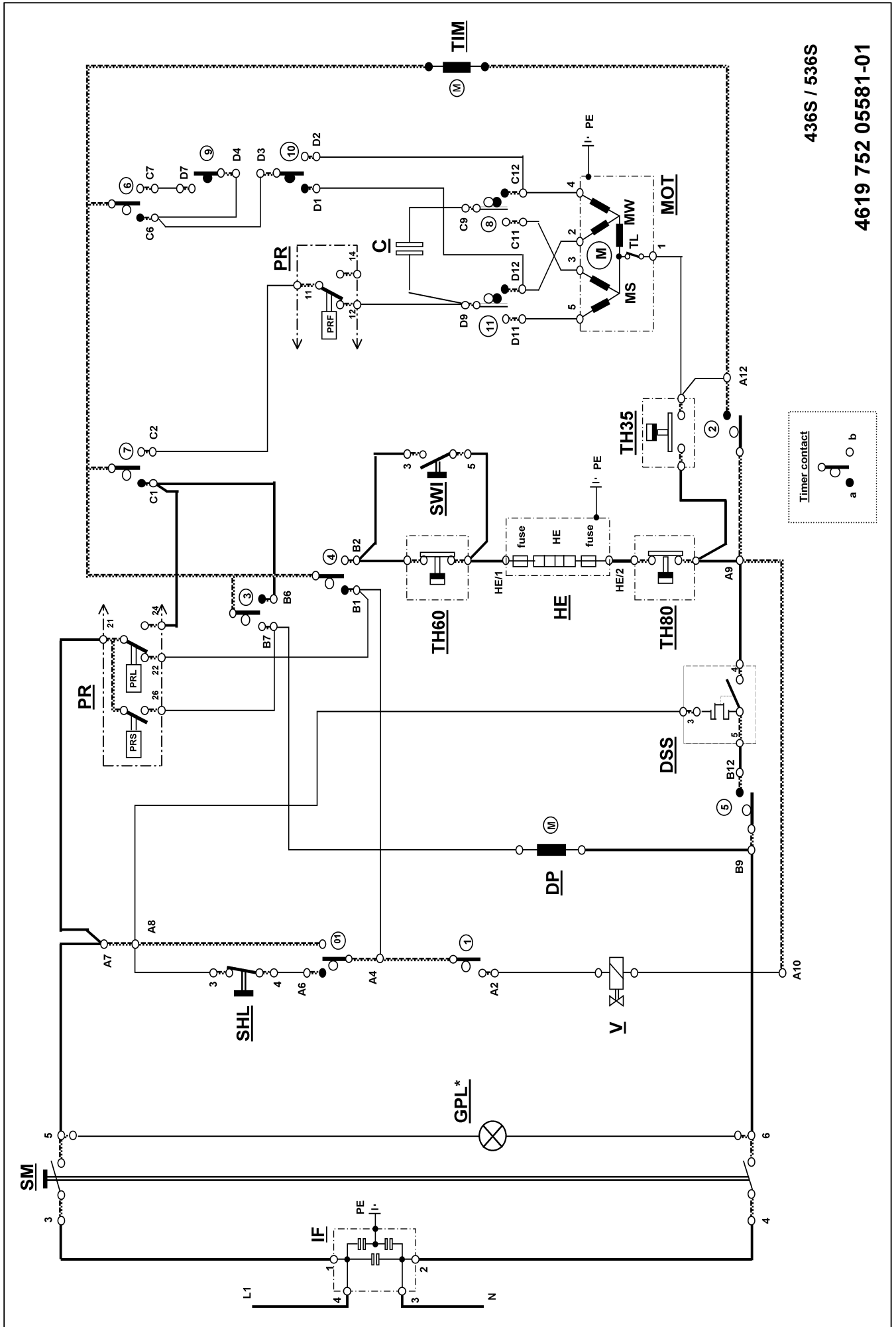
Exploded view



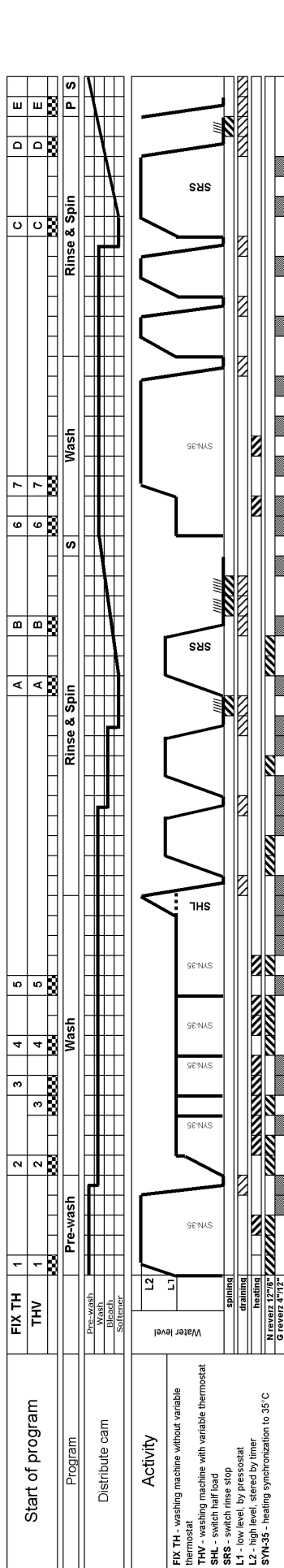
Wiring diagram



Circuit diagram



Program diagram



Timing chart

Step	Number of pin	Activity
1	L1 + TH+84"	FILL L1-FILL L2+WASH
2	L1 + 96"	CHECK L1 > WASH
3	L1 + TH+180"	CHECK L1 > WASH+HEATING
4	L1 + 180"	CHECK L1 > WASH
5	180"	DRAIN PUMP + WASH
6	84"	FILL + WASH
7	L1 + TH+276"	CHECK L1 > WASH+HEATING
8	L1 + TH+360"	CHECK L1 > WASH+HEATING
9	L1 + TH+360"	FILL L1 > WASH+HEATING
10	L1 + TH+360"	CHECK L1 > WASH+HEATING
11	L1 + 360"	FILL L1 > WASH
12	L1 + 180"	FILL L1 > WASH
13	L1 + TH+180"	CHECK L1 > WASH+HEATING
14	L1 + TH+360"	CHECK L1 > WASH+HEATING
15	L1 + 180"	FILL L1 > WASH
16	L1 + 180"	CHECK L1 > WASH
17	L1 + 360"	CHECK L1 > WASH
18	L1 + 360"	CHECK L1 > WASH
19	L1 + 84" (L2)	FILL L1-FILL L2+WASH (SHL)
20	96"	DRAIN PUMP + WASH
21	L1 + 84" (L2)	FILL L1-FILL L2+WASH
22	L1 + 96"	CHECK L1 > WASH
23	L1 + 360"	CHECK L1 > WASH
24	84"	DRAIN PUMP + WASH
25	L1 + 96" (L2)	FILL L1-FILL L2+WASH
26	L1 + 180"	CHECK L1 > WASH
27	L1 + 180"	CHECK L1 > WASH
28	180"	DRAIN PUMP + WASH
29	180"	DRAIN PUMP + SPINNING
30	L1 + 84" (L2)	FILL L1-FILL L2+WASH
31	L1 + 96"296"	CHECK L1 > WASH
32	L1 + 180"	CHECK L1 > WASH (SRS)
33	180" (360")	DRAIN PUMP + WASH
34	180"	DRAIN PUMP + SPINNING
35	180"	DRAIN PUMP + SPINNING
36	360"	WASH (ANTICREASING)
37	INF.	STOP
38	L1 + 360"	FILL L1 > WASH
39	L1 + TH+360"	CHECK L1 > WASH+HEATING
40	L1 + 84" (L2)	FILL L1-FILL L2
41	L1 + 276"	CHECK L1 > WASH
42	L1 + TH+180"	CHECK L1 > HEATING
43	L1 + 180"	CHECK L1 > WASH
44	L1 + 180"	CHECK L1
45	L1 + 180"	CHECK L1
46	84"	DRAIN PUMP
47	L1 + 96" (L2)	FILL L1-FILL L2
48	L1 + 180"	CHECK L1 > WASH
49	84"	DRAIN PUMP
50	L1 + 96"	FILL L1-FILL L2
51	L1 + 180"	CHECK L1 > WASH
52	84"	DRAIN PUMP
53	L1 + 96" (L2)	FILL L1-FILL L2
54	L1 + 84"	CHECK L1 > WASH
55	INF / 96"	CHECK L1 (SRS)
56	L1 + 96"180"	CHECK L1
57	180"360"	DRAIN PUMP + SPINNING
58	180"	DRAIN PUMP + SPINNING
59	180"360"	DRAIN PUMP
60	INF.	STOP

