

Timing light

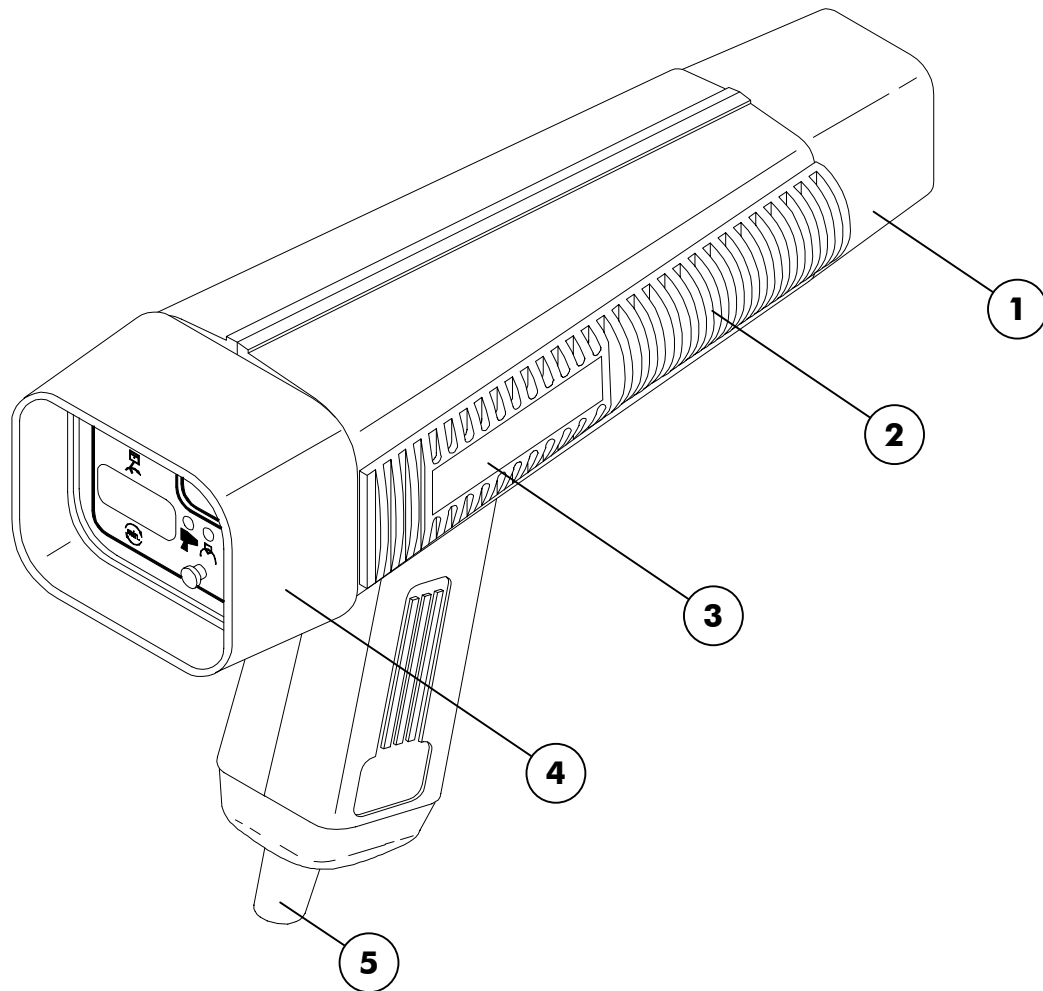
mod 232-E

SERVICE MANUAL

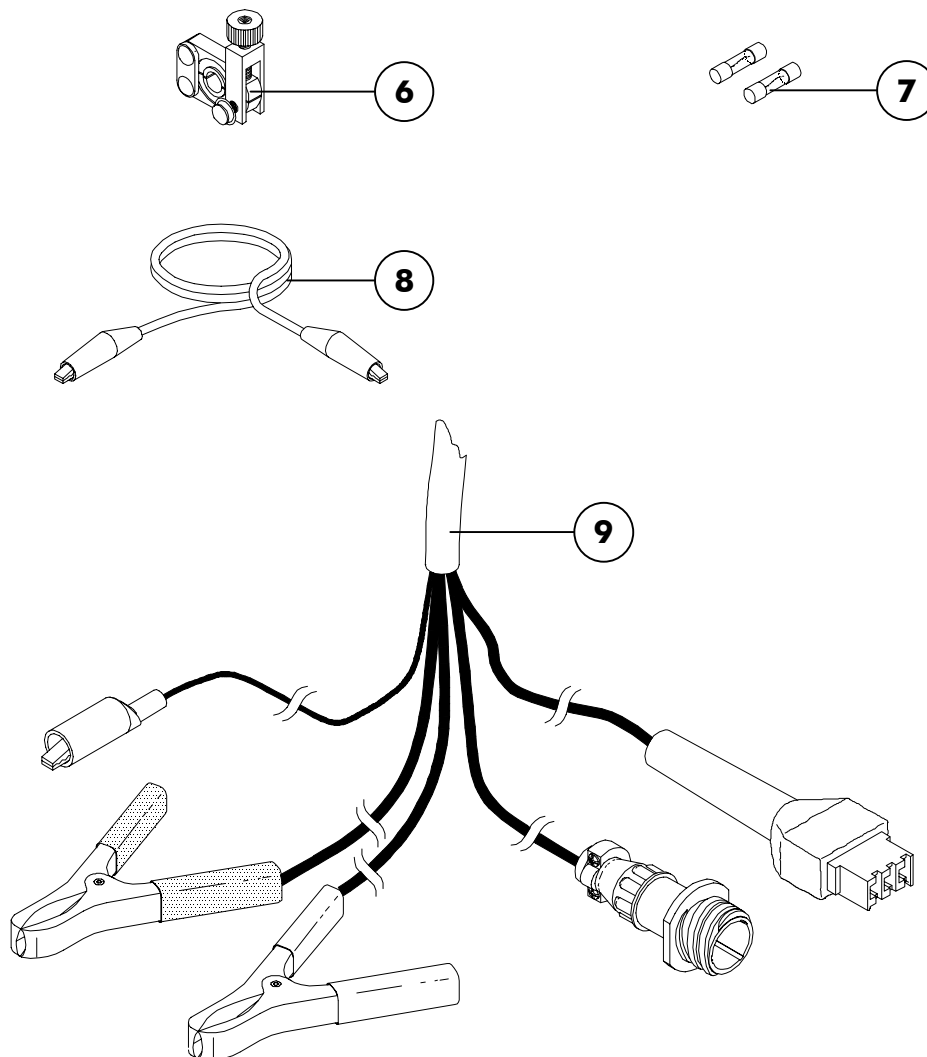
INDEX

1.0 -	SPARE PARTS	2
2.0 -	INTERNAL LAYOUT	5
3.0 -	PARTS LAYOUT	6
3.1 -	Display card	6
3.2 -	Electric diagram display card	7
3.3 -	Diesel card	8
3.4 -	Electric diagram diesel card	9
3.5 -	Basic card	10
3.6 -	Electric diagram basic card	11

1.0 - SPARE PARTS



- | | |
|----------------------------------|----------------|
| 1. Front guard for timing lights | 0619001 |
| 2. Complete casing | 0601002 |
| 3. Side guard (pair) | 0621005 |
| 4. Rear guard for timing lights | 0621001 |
| 5. Fair lead for timing lights | 1101001 |



6. Diameter 6 transducer

3119041

7. 2 A Fuse

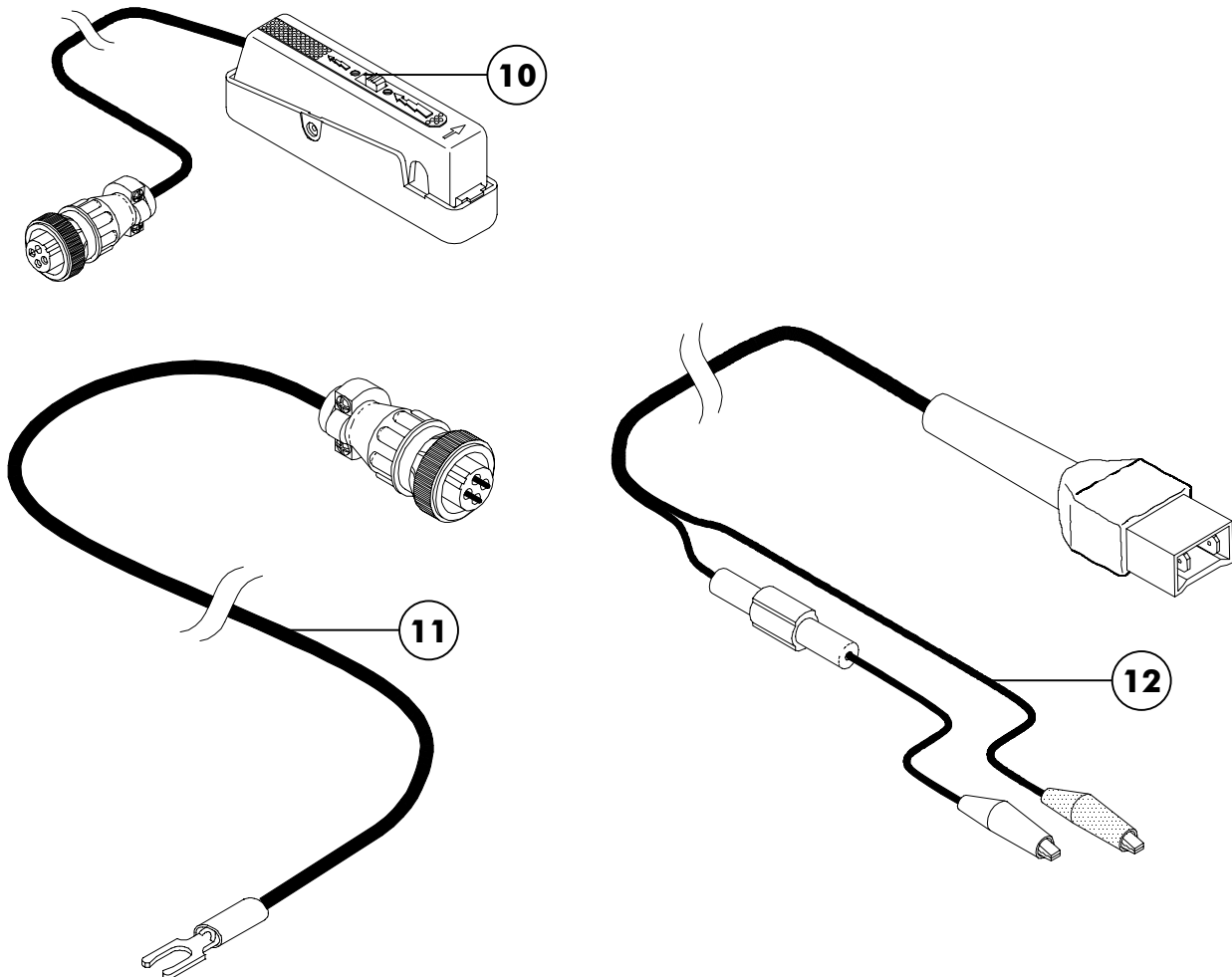
3123006

8. Pick-up ground cable

SL21096

9. Complete cable

2303165



10. Induction clamp

SL06003/PAD

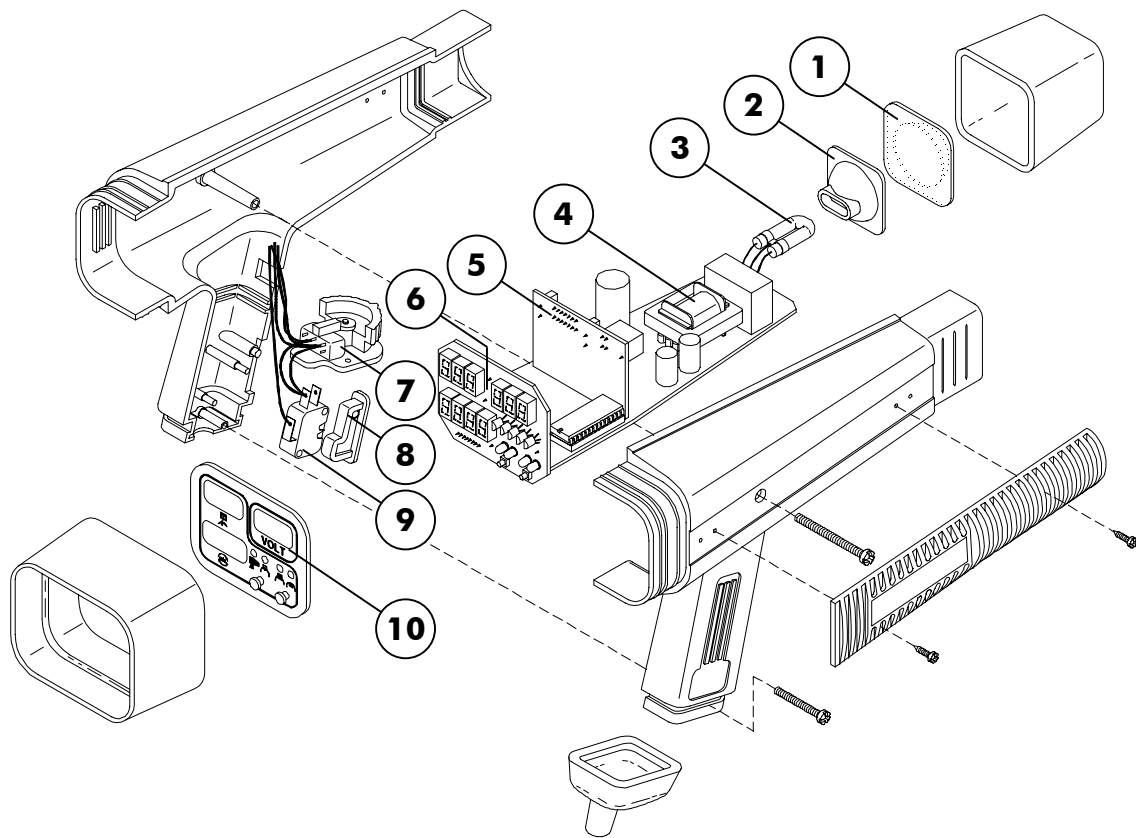
11. Diesel cable

SL06032

12. Interface cable

2303166

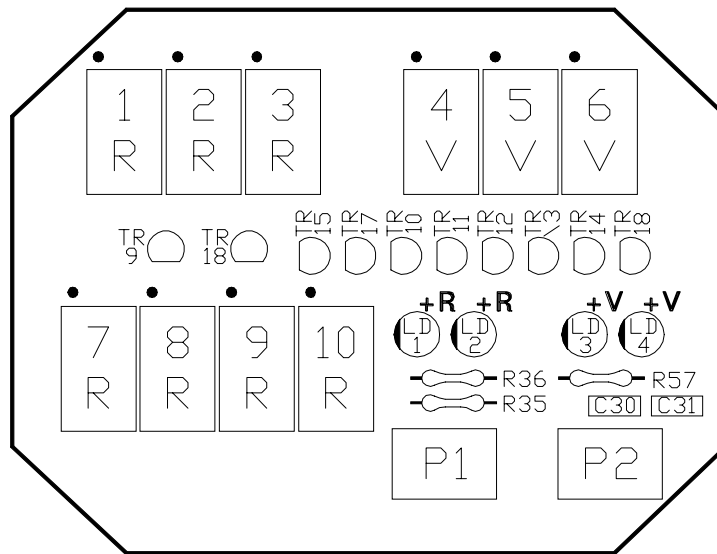
2.0 - INTERNAL LAYOUT



1. Lens	0605001
2. Reflector guard	0631001
3. Xenon lamp	2605001
4. Complete card	2659177
5. Diesel card	SL26372
6. Display card	SL26052
7. Advance switch	SL31012
8. Button	0609001
9. Microswitch (D453-V1AA)	3113006
10. Display screen	0613002

3.0 - PARTS LAYOUT

3.1 - Display card



Display card

SL26052

P1-P2

Button SKHHBY

3113043

Red 7501 display

2645007

D4-5-6

Green 7801 display

2645008

LD1-2

Red diode led TLR

2647010

LD3-4

Green diode led TLG

2647012

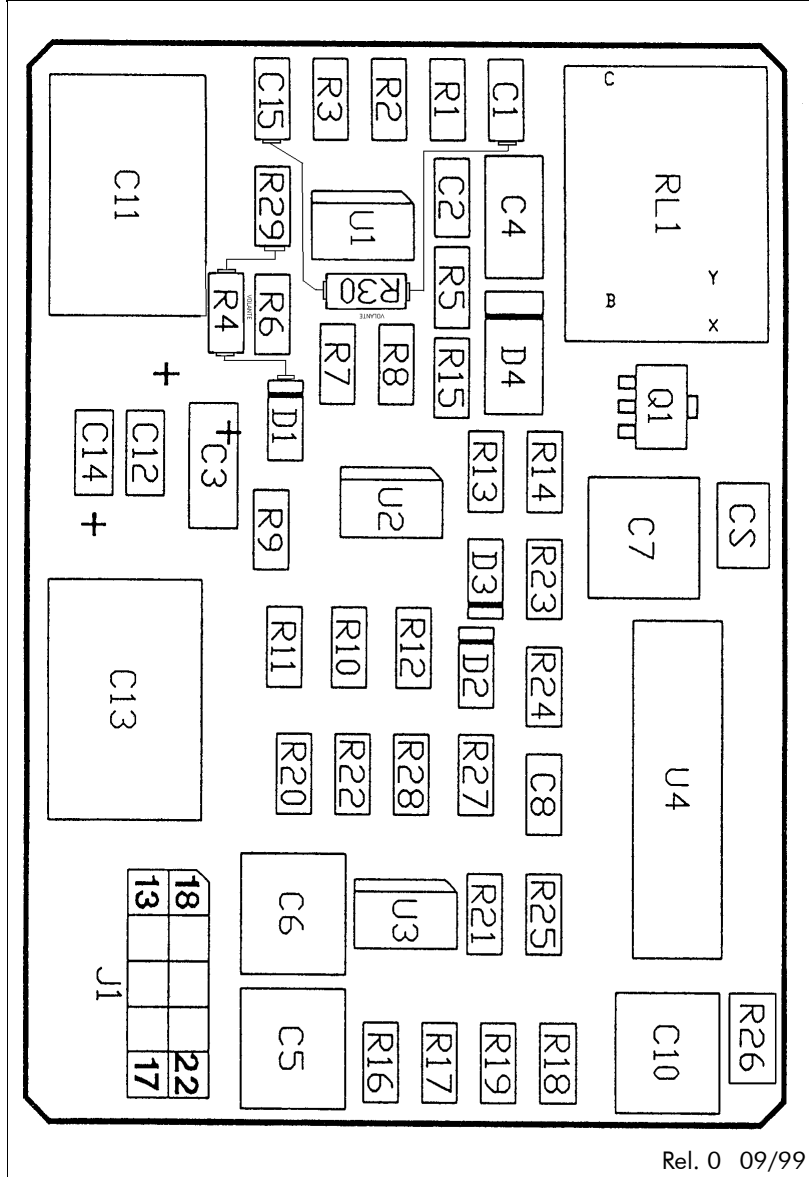
BC 327 Transistor

2613002

BC 337 Transistor

2613001

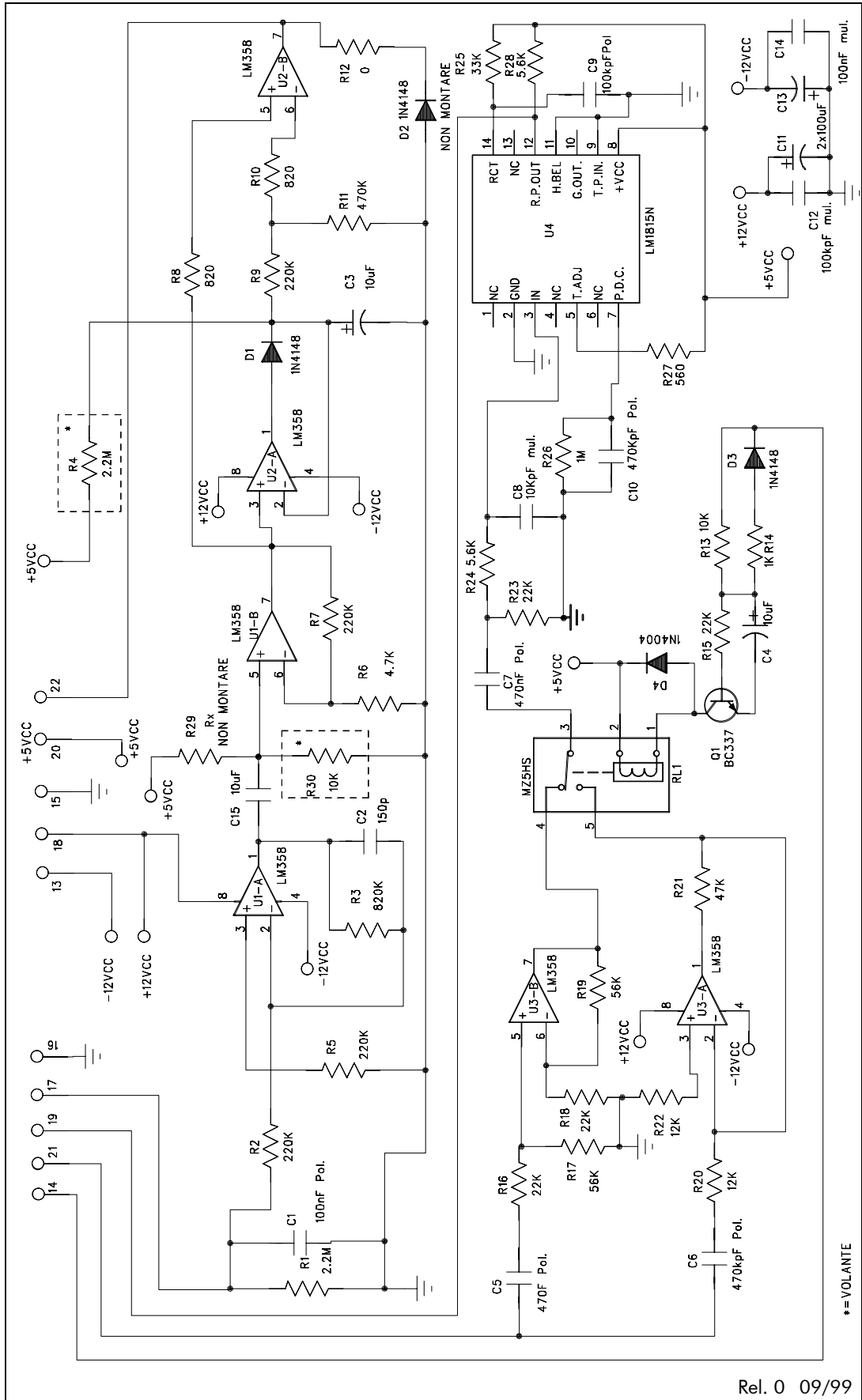
3.3 - Diesel card



Diesel card

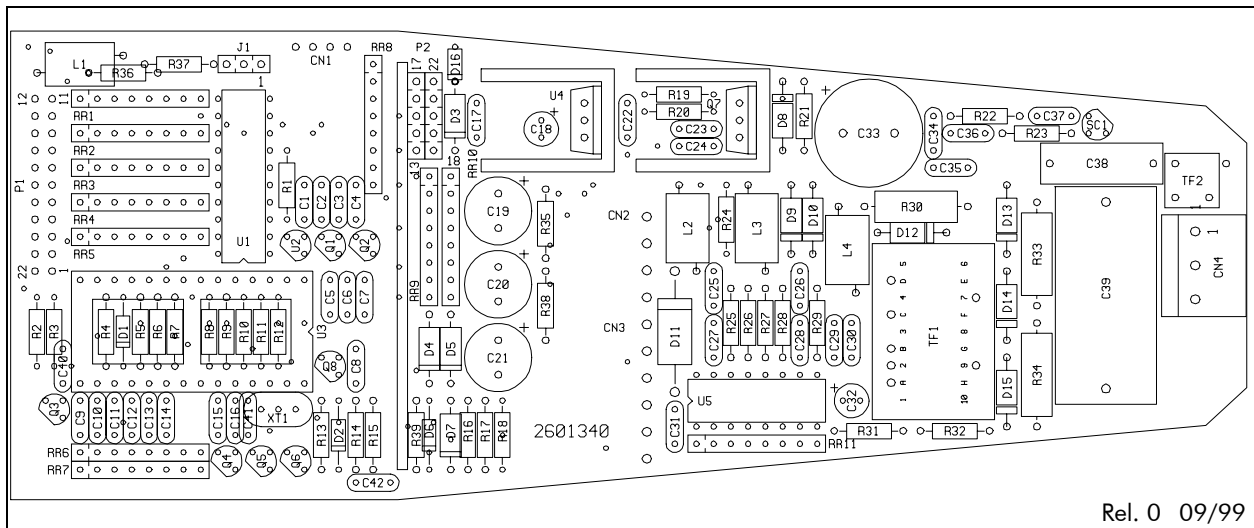
SL26372

3.4 - Electric diagram diesel card



Rel. 0 09/99

3.5 - Basic card



Basic card

TF2	Booster transformer	2603010
TF1	Transformer	2603052
U1	Integrated circuit 74HC573	2641081
U3	Integrated circuit MC68HC705P6	2641270
SC1	SCR BT149D	2641267
Q2	Transistor BC 327	2613002
Q1	Transistor BC 337	2613001
Q5	SCR P0115	2641268
U4	Integrated circuit 7805	2641019
U7	Integrated circuit IRFZ44	2641271

3.6 - Electric diagram basic card

