

Data Acquisition System

(a PC-compatible, True-RMS DVM)

Uday Arya and Jim George
VIII semester, E&C

Test & Measurement needs

- Ease of use
- Ability to store and visualize data
- High accuracy and large dynamic range
- Basic signal processing support
- Field measurement storage
- Low cost

Features

- Easy-to-use Menu Driven Interface
- High resolution (six digits)
- PC Interface
 - Logged Mode
 - Slave Mode
- True-RMS measurement
- 128 Reading Non-volatile Memory

Features

- Different Averaging modes supported
- Auto-ranging support
- Analog-like Bar graph mode
- Minimum-Maximum mode
- 16x2 backlit LCD display

Design Issues

- Analog Front-end Design
 - Attenuator
 - Attenuate applied voltage to within the ADC's dynamic range (512 mV)
 - Provide protection against high voltage and ESD
 - True RMS-to-DC Converter
 - Coupling selector
 - Chooses between direct input voltage and RMS-to-DC converted voltage

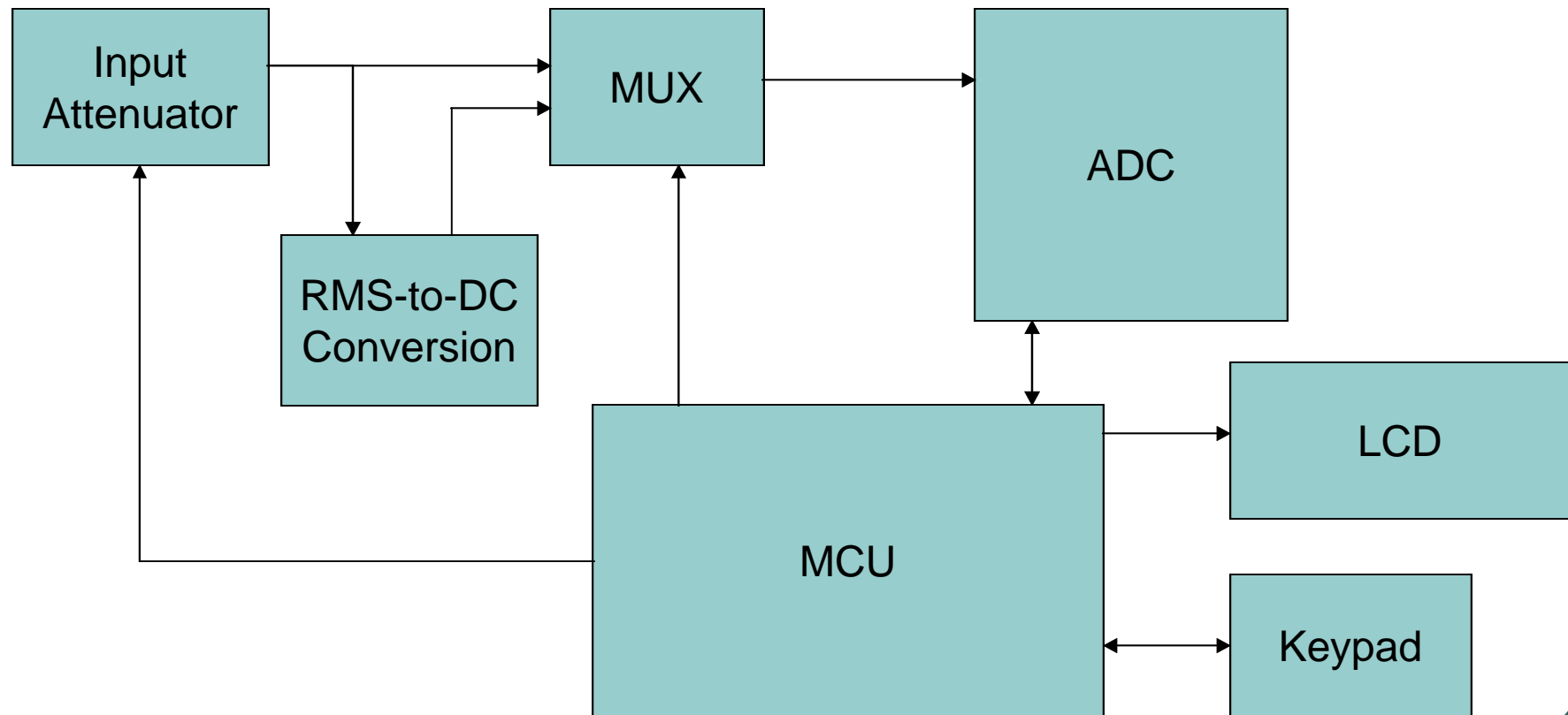
Design Issues

- ADC
 - Easy-to-use Serial Interface (SPI)
 - 50/60 Hz Line Noise Rejection
 - Conversion rate of 13 readings/sec.
 - Noise at Input
 - Use of a ground-plane on the PCB
 - Separation of Analog and Digital sections
 - Liberal power-supply decoupling at each chip

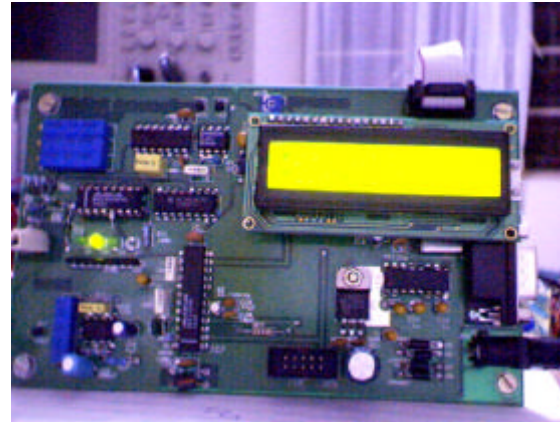
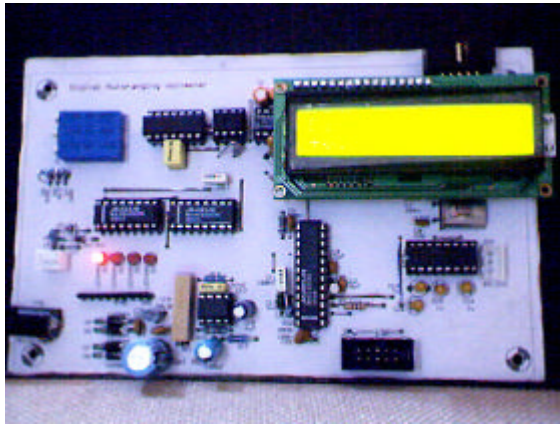
Design Issues

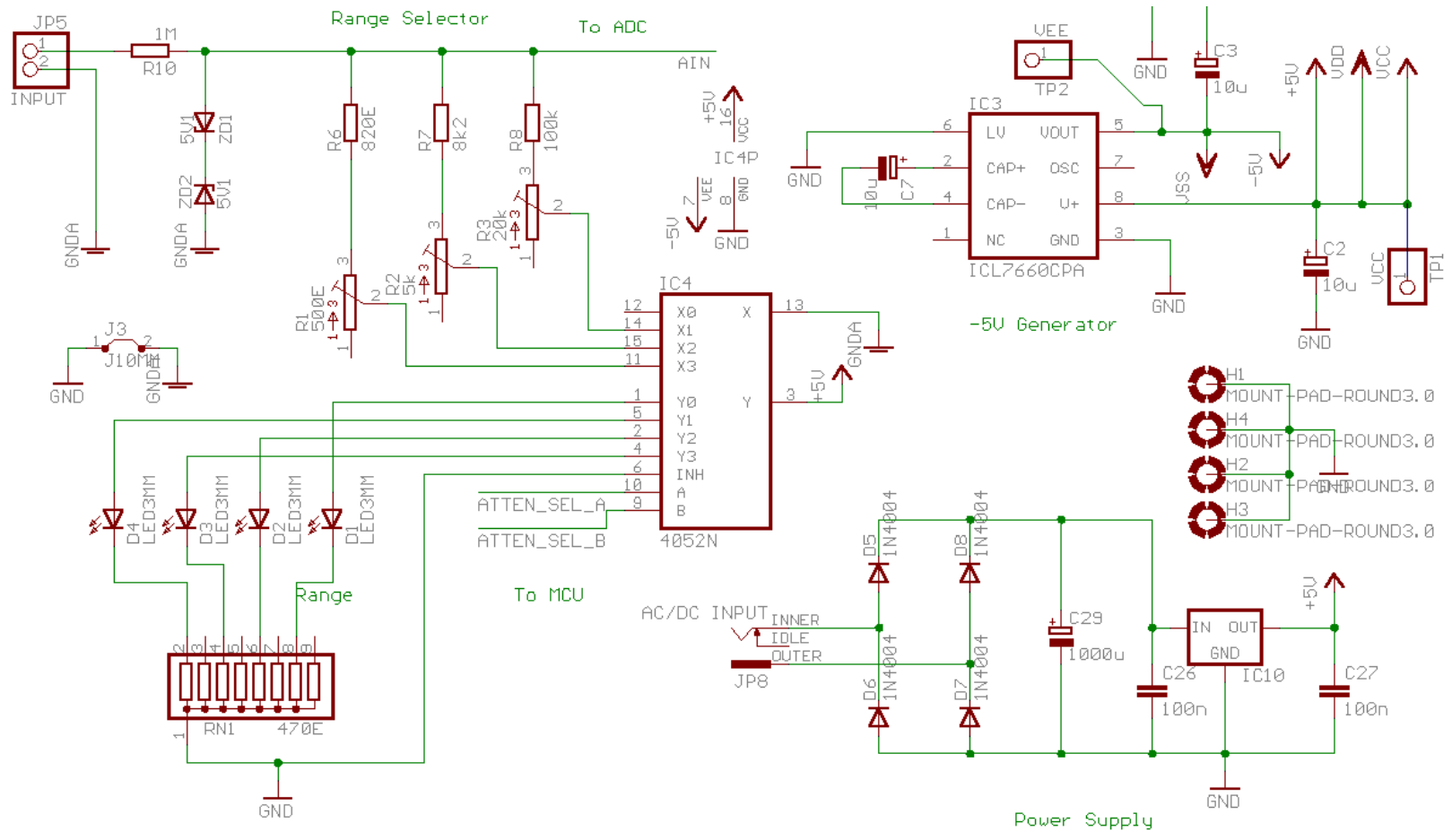
- **Microprocessor**
 - Ease of Programming
 - Large onboard memory
 - 8k Flash program memory
 - 512 bytes EEPROM
 - 512 bytes SRAM
 - 32 bidirectional I/O ports
 - SPI and RS-232 support

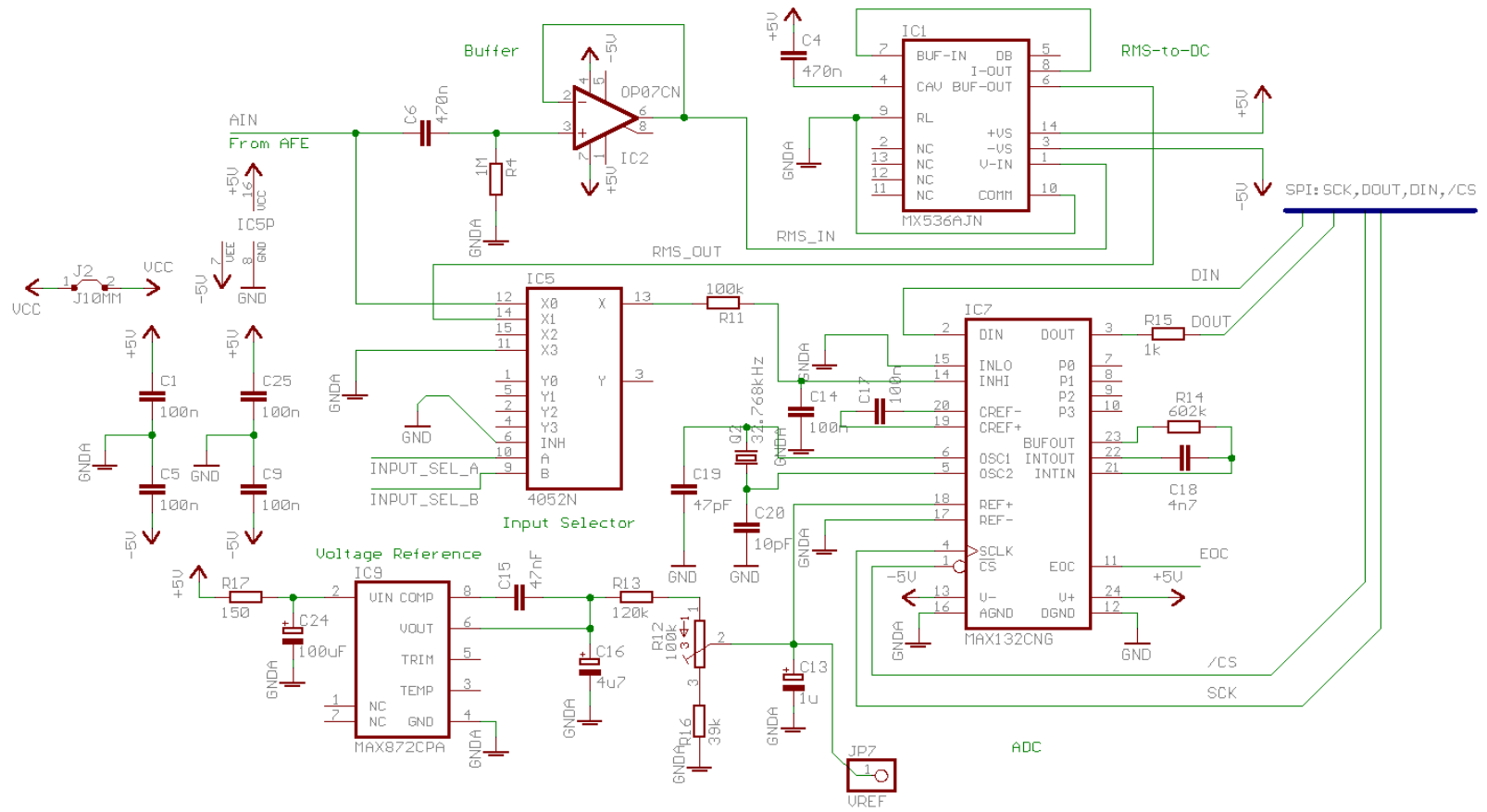
Block Diagram

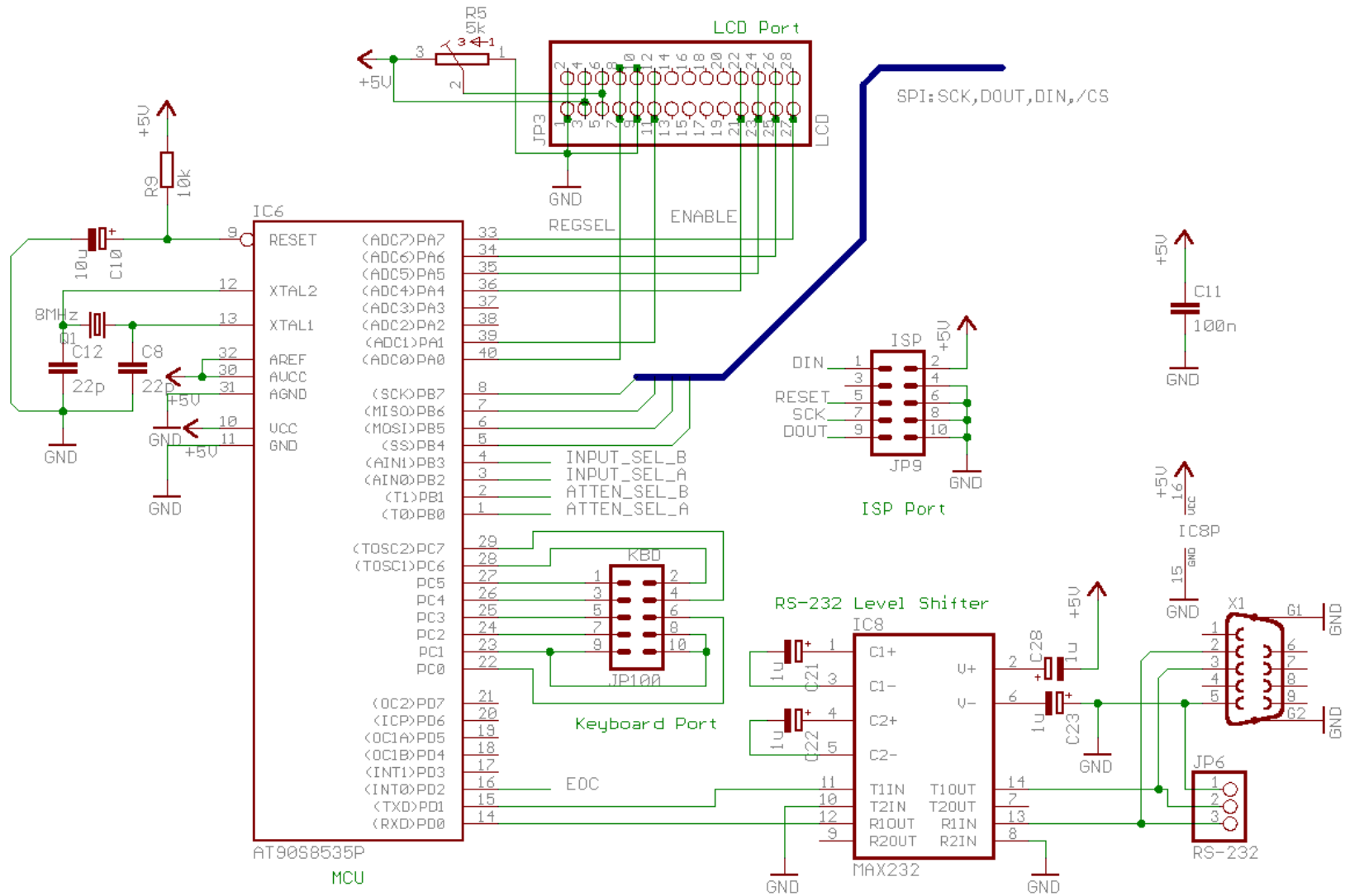


Schematics and Board Layout

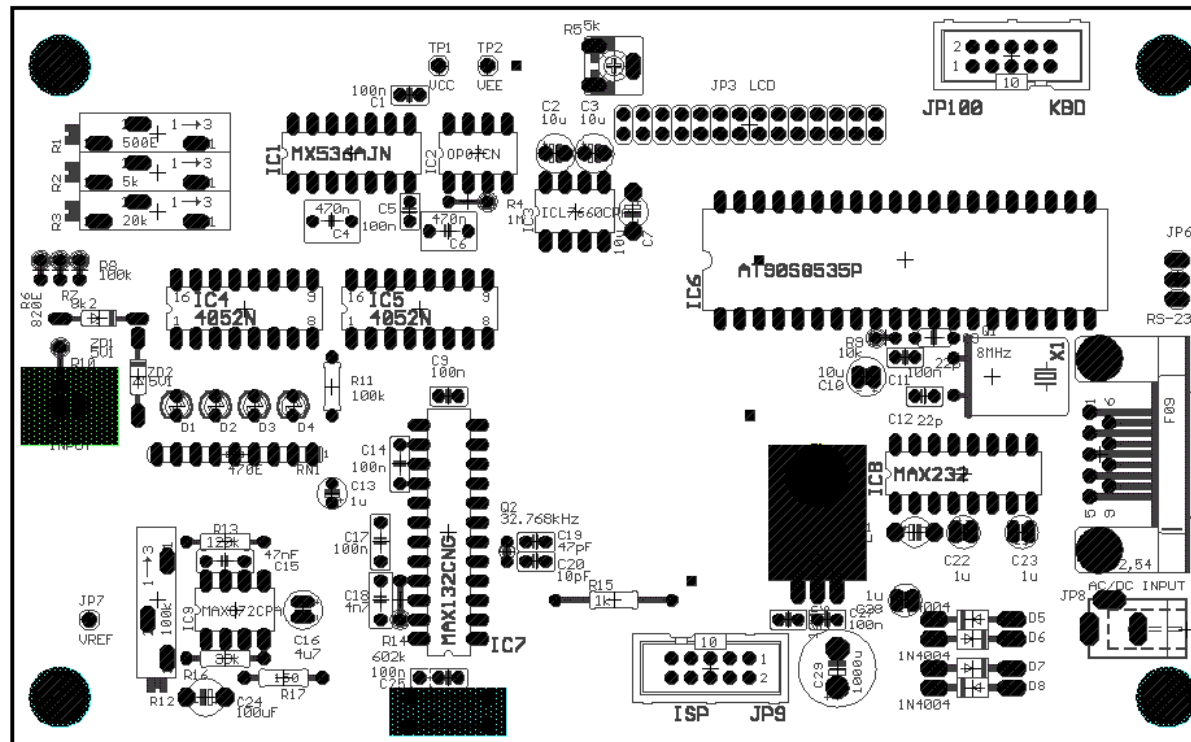


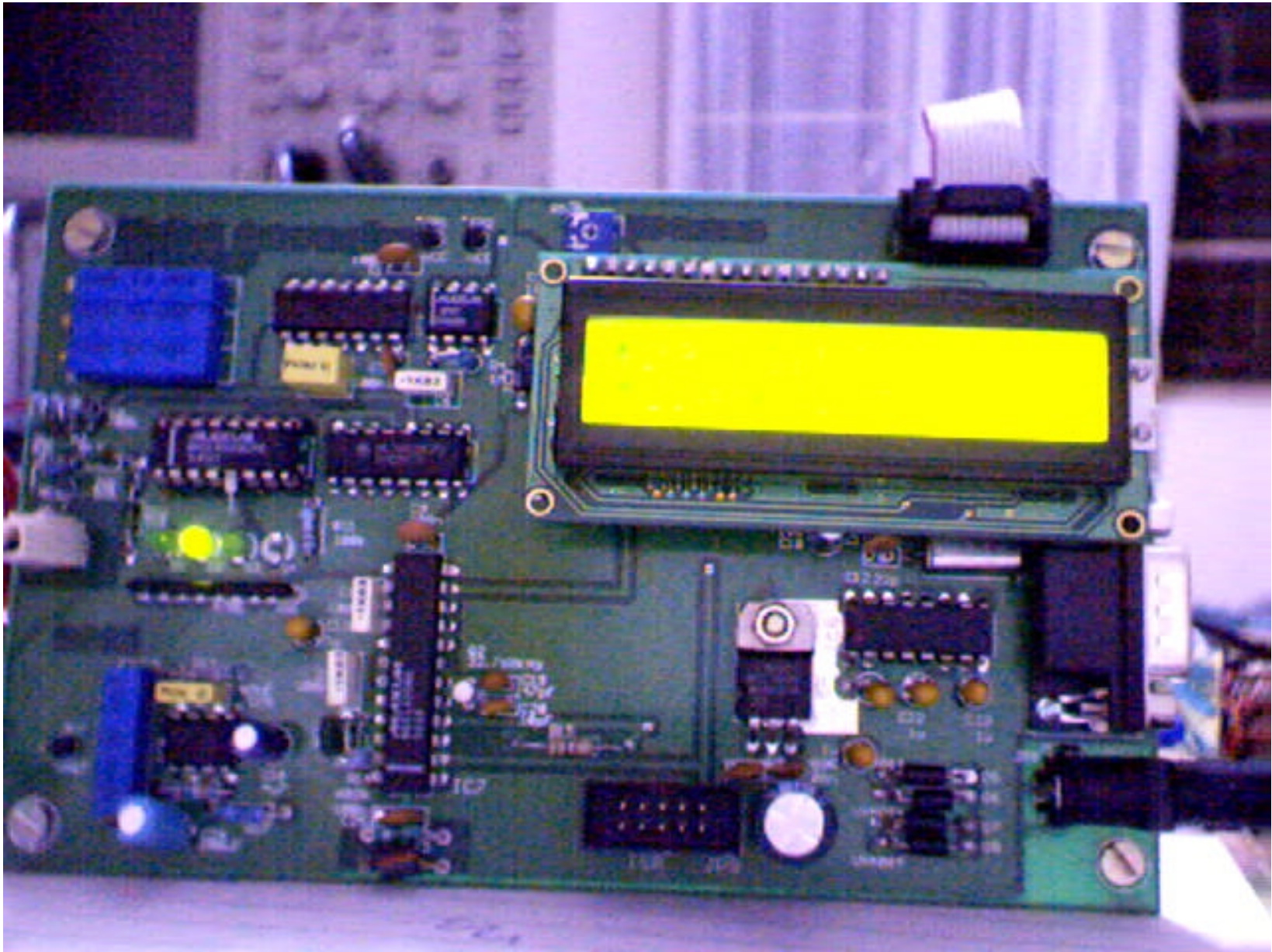




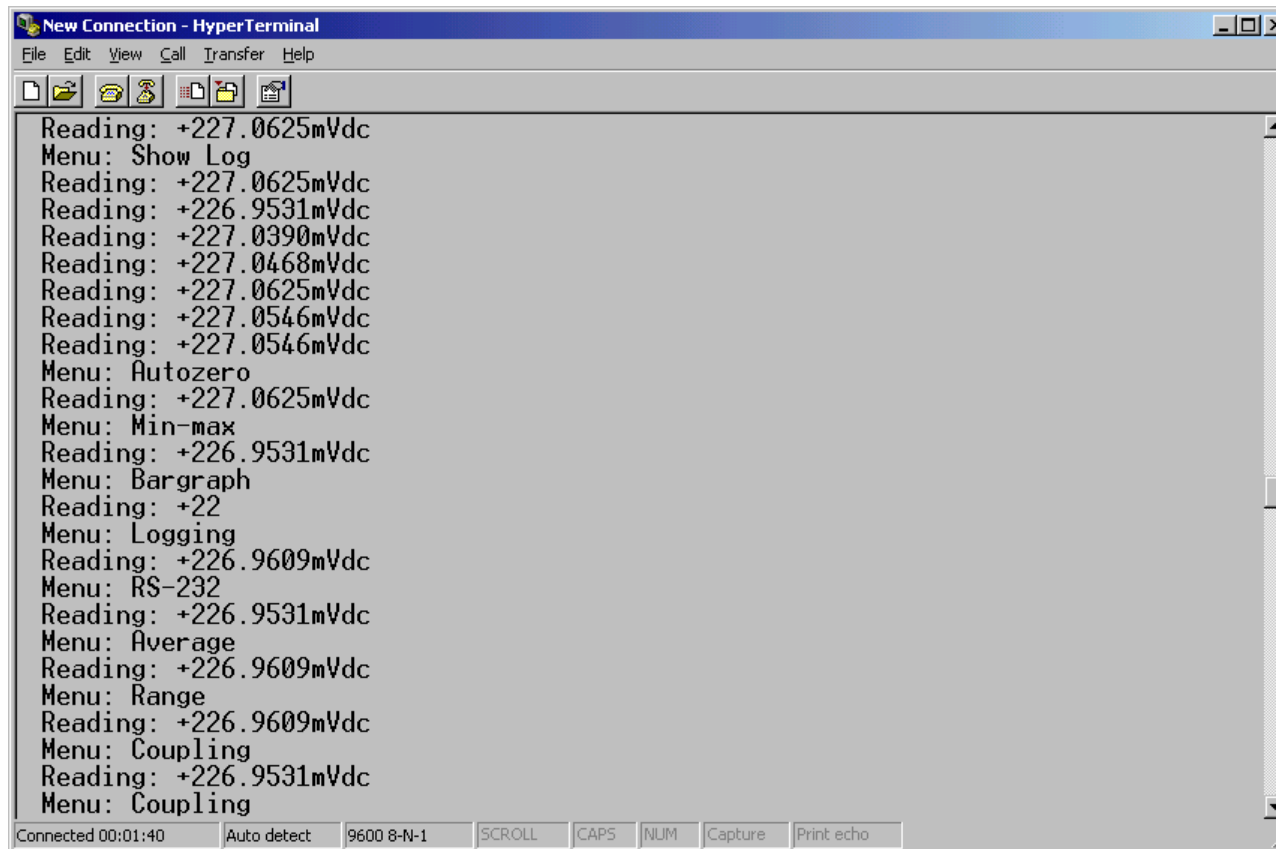


Parts Layout (Silkscreen)





RS-232 Slave Mode Operation



```
New Connection - HyperTerminal
File Edit View Call Transfer Help
Reading: +227.0625mVdc
Menu: Show Log
Reading: +227.0625mVdc
Reading: +226.9531mVdc
Reading: +227.0390mVdc
Reading: +227.0468mVdc
Reading: +227.0625mVdc
Reading: +227.0546mVdc
Reading: +227.0546mVdc
Menu: Autozero
Reading: +227.0625mVdc
Menu: Min-max
Reading: +226.9531mVdc
Menu: Bargraph
Reading: +22
Menu: Logging
Reading: +226.9609mVdc
Menu: RS-232
Reading: +226.9531mVdc
Menu: Average
Reading: +226.9609mVdc
Menu: Range
Reading: +226.9609mVdc
Menu: Coupling
Reading: +226.9531mVdc
Menu: Coupling
Connected 00:01:40 Auto detect 9600 8-N-1 SCROLL CAPS NUM Capture Print echo
```


Comparison with the Tektronix TX-1

- Tektronix TX-1
 - 4½ - digit accuracy
 - 10 field measurements may be stored
 - Cost : US\$ 275
- Our DVM
 - 6 – digit accuracy
 - Up to 128 measurements
 - Cost : < Rs.2,000

Applications

- High-resolution bench top DVM
 - With Data logging facility
- Field (service) measurements
 - As a stand-alone, reliable instrument
- Battery-charge monitor
 - Measurement over time
- Input Device for Data Analysis software

Questions?

jimgeorge@softhome.net

uday_9271@yahoo.com