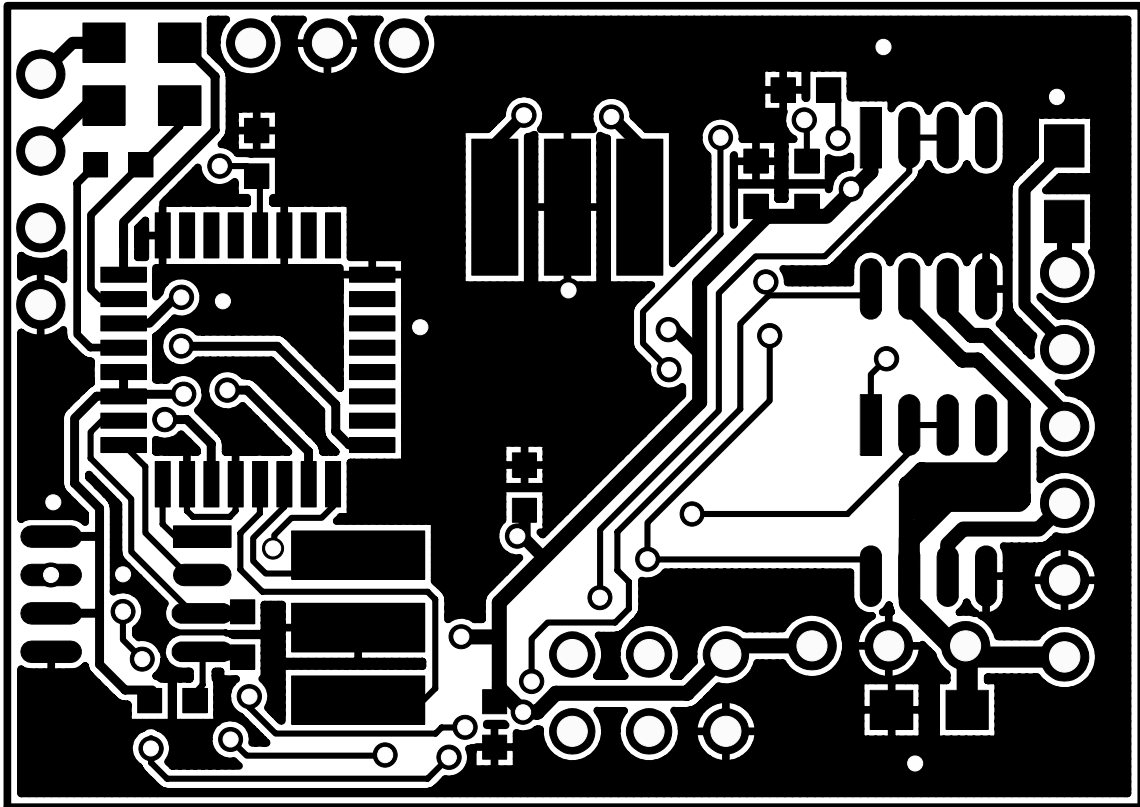


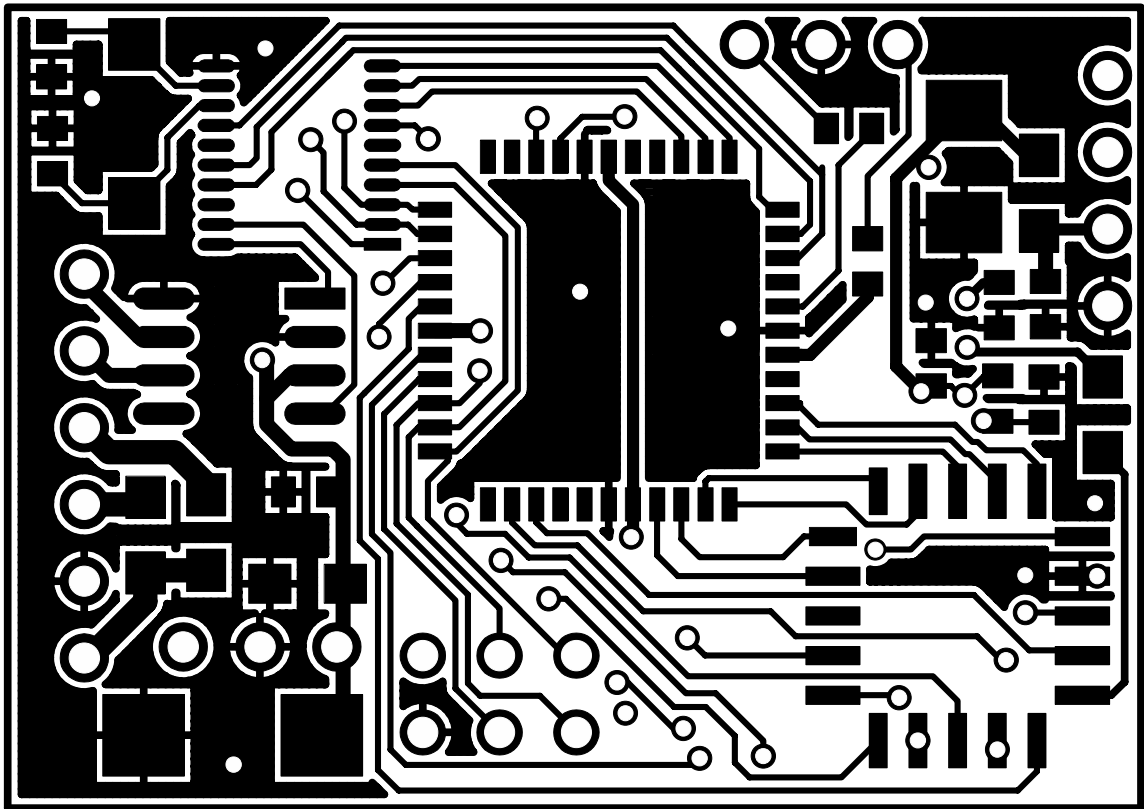
Not for Sale, Self-made ONLY

MB02.0r.2a



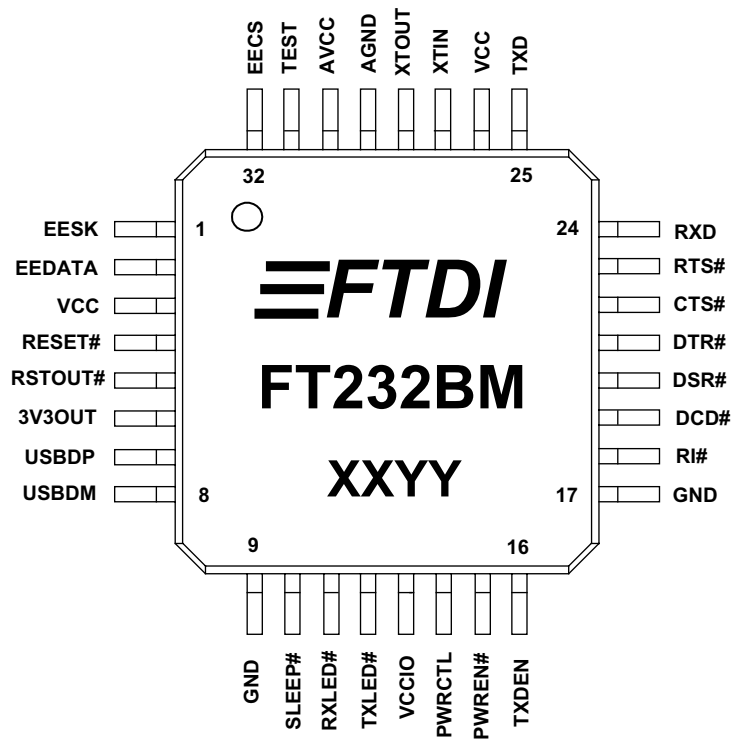
For print use no mirror, correct scale this image
37mm x 26mm

MB02 0E 5a

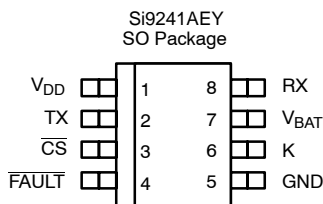
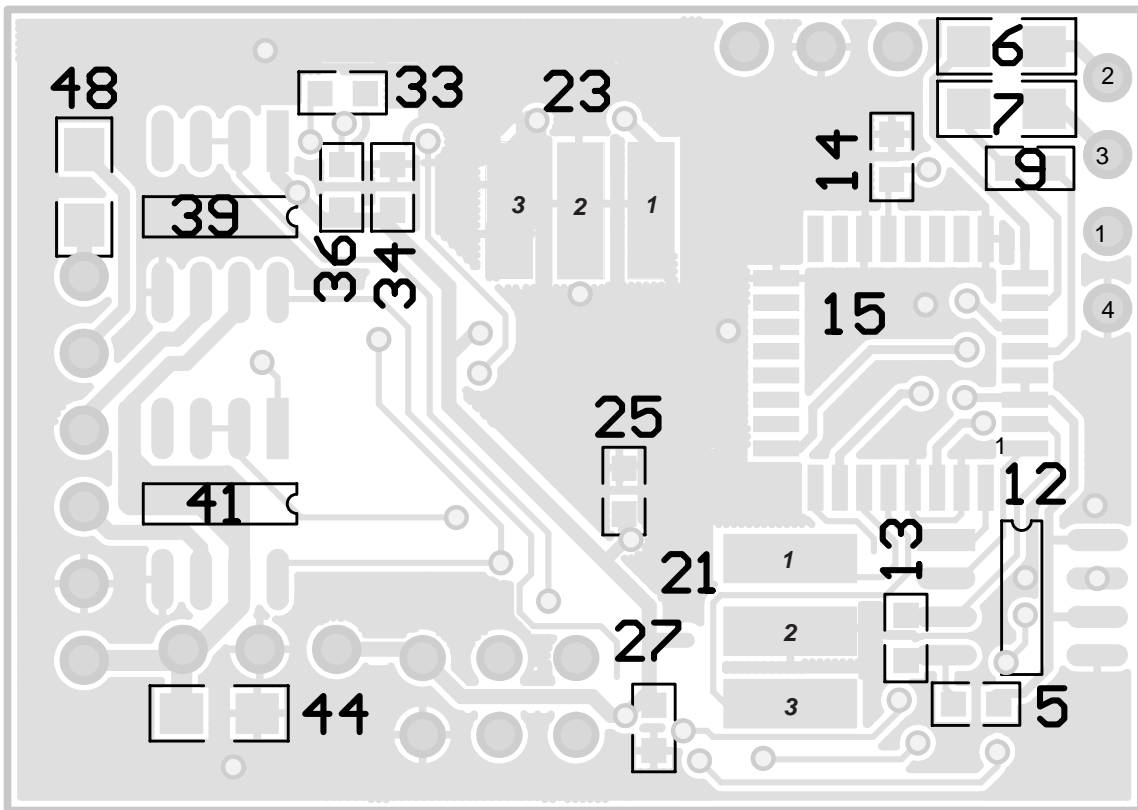


For print use no mirror, correct scale this image
37mm x 26mm

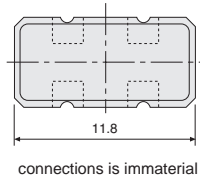
- 5. R: 10k 0603
- 6. R: 27E 0805
- 7. R: 27E 0805
- 9. R: 1k5 0603
- 12. 93LC46 SOIC8
- 13. R: 2k2 0603
- 14. C: 0.1 0603
- 15. FT232BM QFP32
- 21. Q: 6.000 MHz 3-Pin Resonator ex., CSTCC6M00G
- 23. Q: 7.37 MHz Resonator ex., 2-Pin NDK NX1255GB073B, 3-Pin CSTCC7M37G Murata's CERALOCK
- 25. C: 0.1 0603
- 27. C: 0.1 0603
- 33. R: 10k 0603
- 34. C 0.1 0603
- 36. Not installed
- 39. SI9241-AEY SOIC8
- 41. SI9241-AEY SOIC8
- 44. C: 0.1 0805
- 48. R: 120E 0805



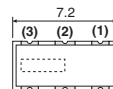
Drill Via Hole Diameters- 0.5 mm



Qartz 6SMX package (NX1255)



Qartz CSTCC, KX-ZTT CC MG package



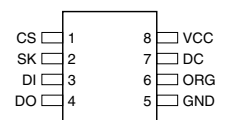
Connections (top view)

- (1) Input
- (2) Ground
- (3) Output

If connected conversely, there may occur a little frequency lag

93LC46

8-lead SOIC

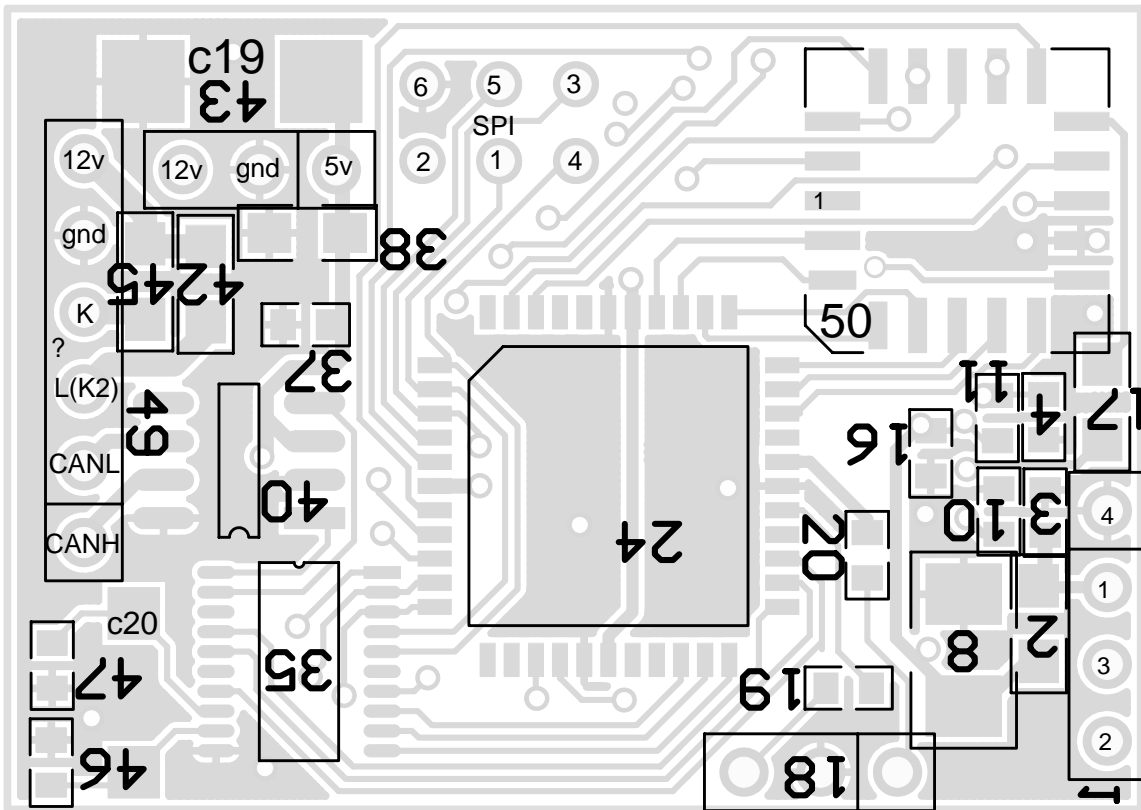
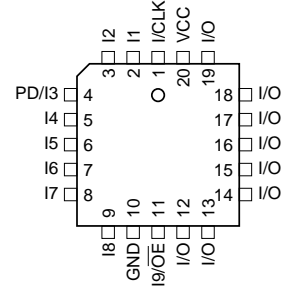
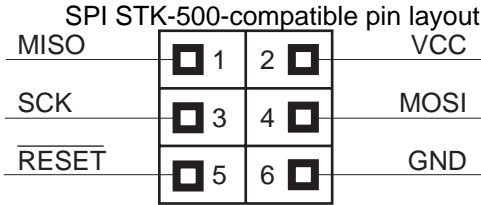


1. USB Conn: 1- V BUS 2- DMinus 3- DPlus 4- GND
2. Ferrite Bead or Jumper, 0805
3. C: 10 pF 0603
4. C: 0.1 0603
8. C: 10uF/16V Type C package (1111)
10. C: 33nF...0.1uF 0603
11. R: 470E 0603
16. C: 0.1 0603
17. R: 22E 0805
18. Led: D3...5mm, dual-color,3-pin(green/red) ex., L-469EGW
- 19,20. R: 470E...1K 0603
- c19. C: 22uF/16V Type D
- c20. Q: 16.000 MHz JXS63, KX-12B
24. ATMEGA162 16AI TQFP44

35. MCP2515-I/ST TSSOP20
37. C: 0.1 0603
38. C: 1.0 0805
40. A82C250 SOIC8
- 42, 45. R: 680E 0805
43. 7805 TO220
- 46, 47. C: 22..30 pF 0805
49. OBD-Conn: 16- 12v; 4,5- gnd; 7- K; 15- L (K2); 6- CAN-H; 14- CAN-L
50. ATMEGA162 16AI TQFP44

16V8

Pin Name	Function
CLK	Clock
I	Logic Inputs
I/O	Bidirectional Buffers
\overline{OE}	Output Enable
VCC	+5V Supply
PD	Power Down



Quartz JXS63, KX-12B package

