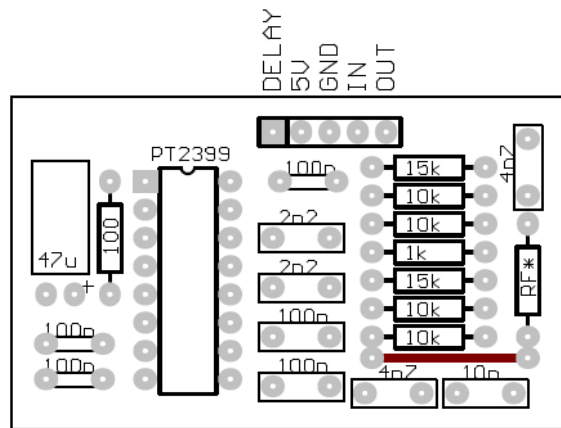
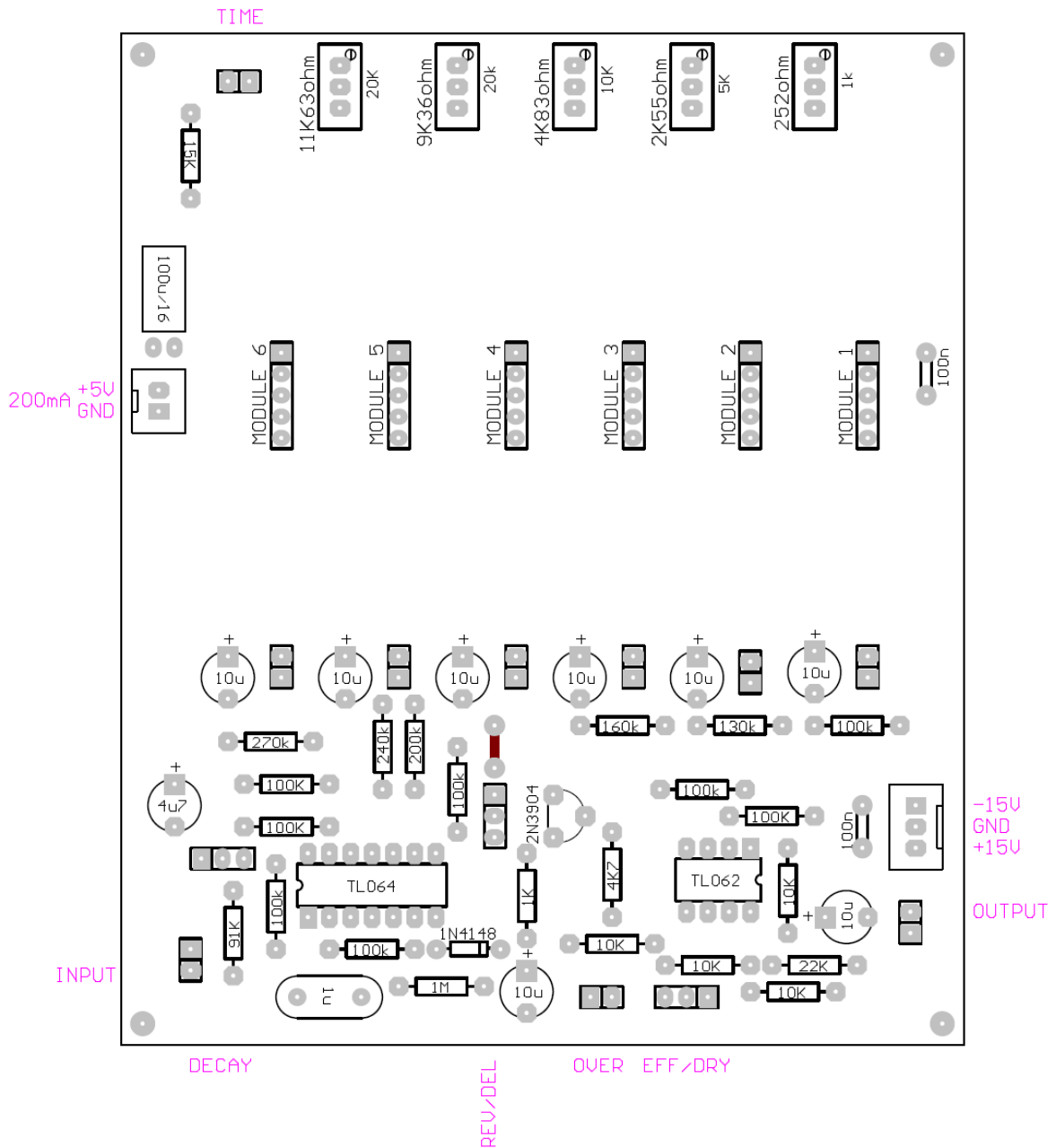


# Digital Reverb Project PT2399

## PT delay MODULE

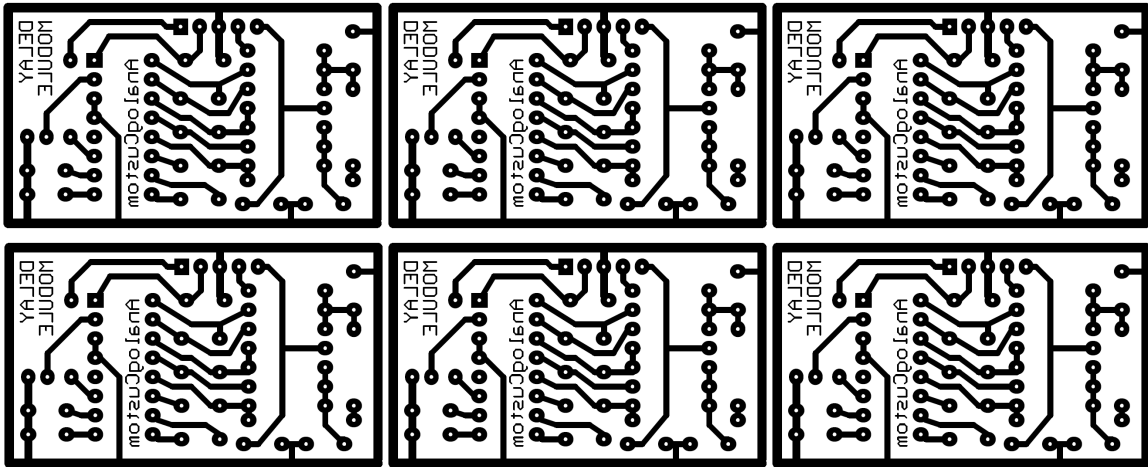


## REVERB PT2399 MAIN BOARD

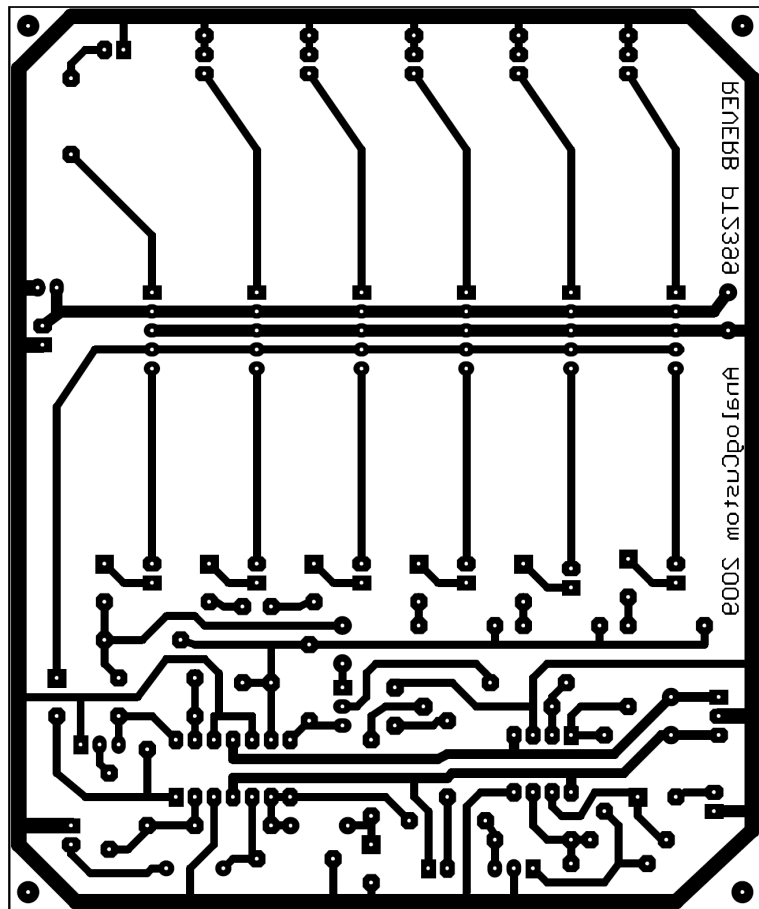


Pcb's: Ready Etching or Press & Peel

Delay Module:

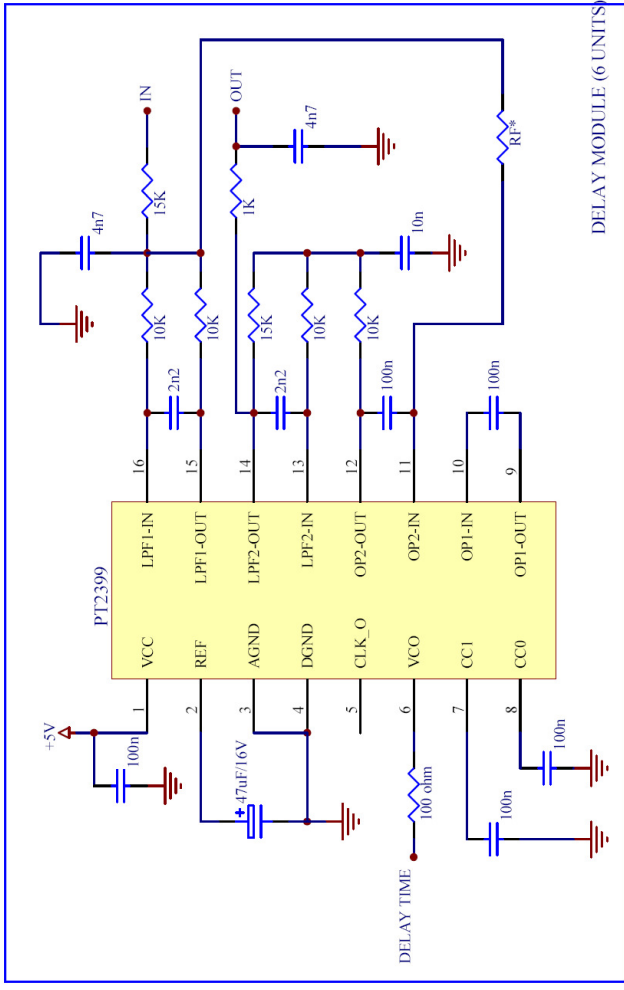
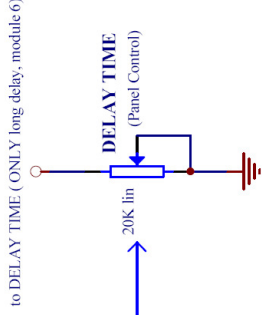
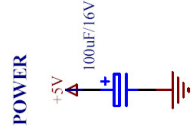
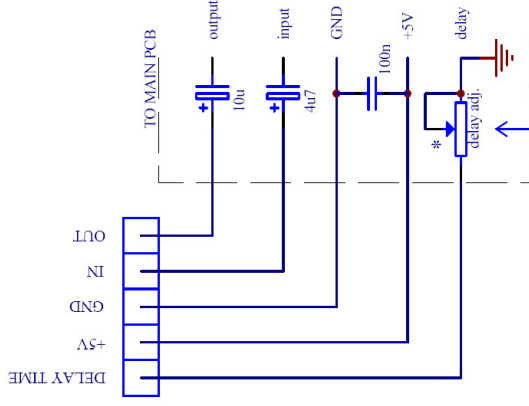


Main PCB:



# DIGITAL REVERB PT2399

## Delay Module



**RF\* Values**

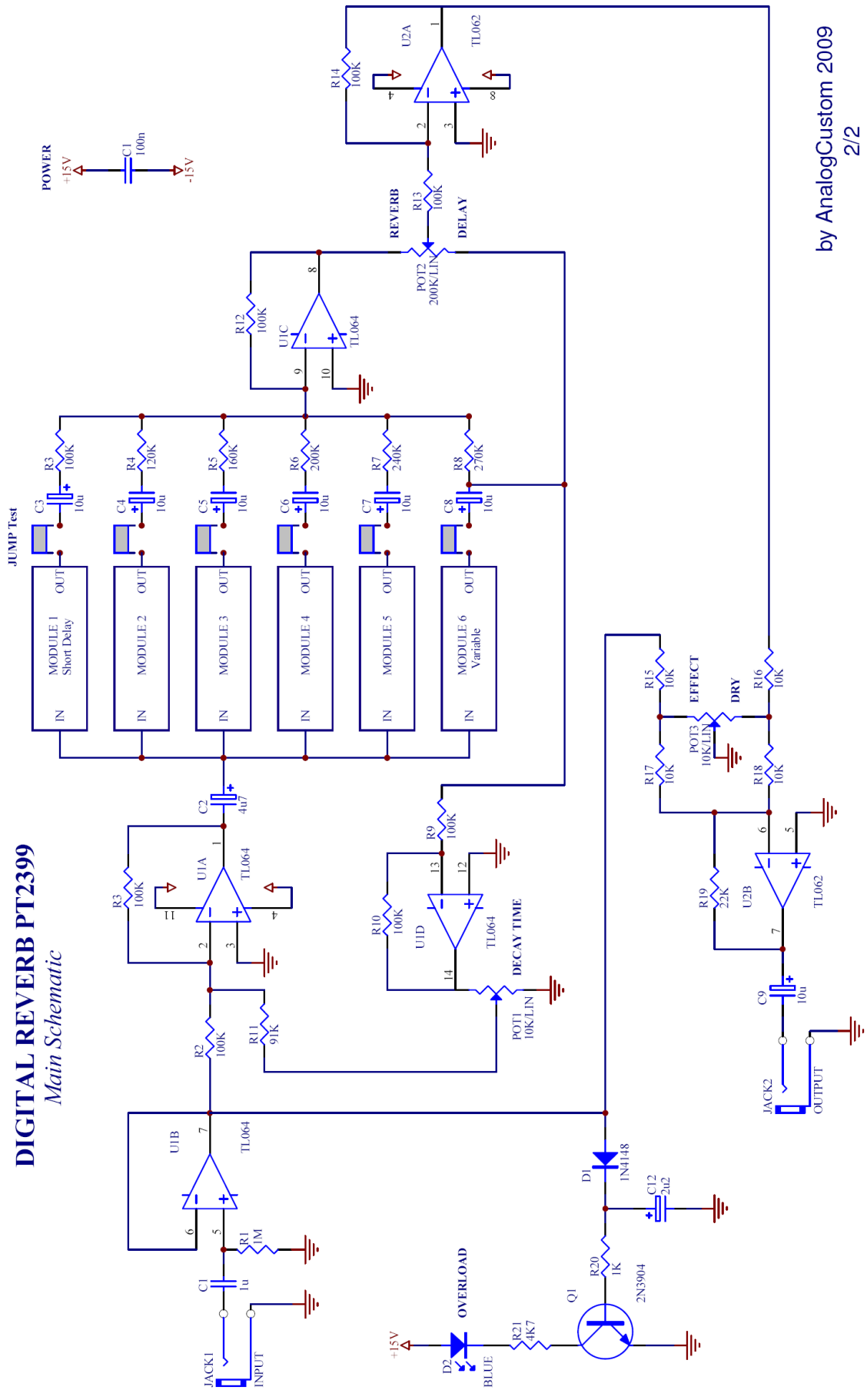
- Module 1 = 16K
- Module 2 = 20K
- Module 3 = 24K
- Module 4 = 27K
- Module 5 = 30K
- Module 6 = NOT

**Time adj. values**

- Module 1 = 252 ohm
- Module 2 = 2K55 ohm
- Module 3 = 4K83 ohm
- Module 4 = 9K36 ohm
- Module 5 = 11K63 ohm
- Module 6 = Variable 20K POT.

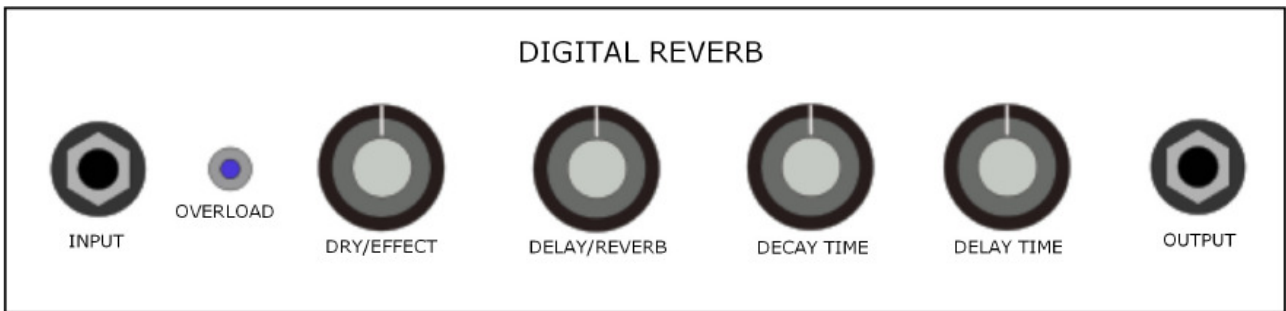
# DIGITAL REVERB PT2399

*Main Schematic*





Panel:



\*  
\*  
\*  
\*  
\*  
\*

<http://sites.google.com/site/analogcustomkits/Home/reverb-digital>  
<http://sites.google.com/site/analogcustomsynth/>  
<http://analogcustom.blogspot.com/>

AnalogCustom 2009  
[analogcustomsynth@gmail.com](mailto:analogcustomsynth@gmail.com)