

# SERVICE GUIDE

## KYESYSTEMS CORP.





## Table of Contents

Revision History .....	2
Table of Contents .....	3
Getting Started .....	4
Conventions Used in this Guide .....	4
Safety Precautions .....	4
Chapter 1. How to Handle Defective Returns.....	5
1.1 Speaker no sound	
1.2 Power LED no light	
1.3 Headphone no sound	
1.4 Bass/Volume no function	
Chapter 2. Specifications .....	10
Chapter 3. Block Diagram .....	11
Chapter 4. Exploded View .....	12 & 13
Chapter 5. Part List .....	14
Chapter 6. Schematic Diagram .....	15
Chapter 7. Important Notes .....	16
7.1 Packing Requirement for Sending the PCB Assembly by Post .....	16
7.2 Short of Spare Parts while Repairing a Speaker System .....	16

## Getting Started

### Conventions Used in this Guide

Pay Special Attention : Instructions that are important to remember and may prevent mistakes .

Caution : Information that, if not followed, may result in damage to the product .

### Safety Precautions

The following precautions should be observed in handling the speaker Described in this guide :

Place the speakers on a flat, level and stable surface.

Do not place the speakers in environments subject to mist, smoke, vibration, excessive dust, salty or greasy air, or other corrosive gases and fumes.

Do not drop or jolt the speakers.

Do not allow anything to drop into the subwoofer case through its ventilator, as it could result in fatal electric shock or fire .

Place the unit far enough from other equipments for good heat dissipation .

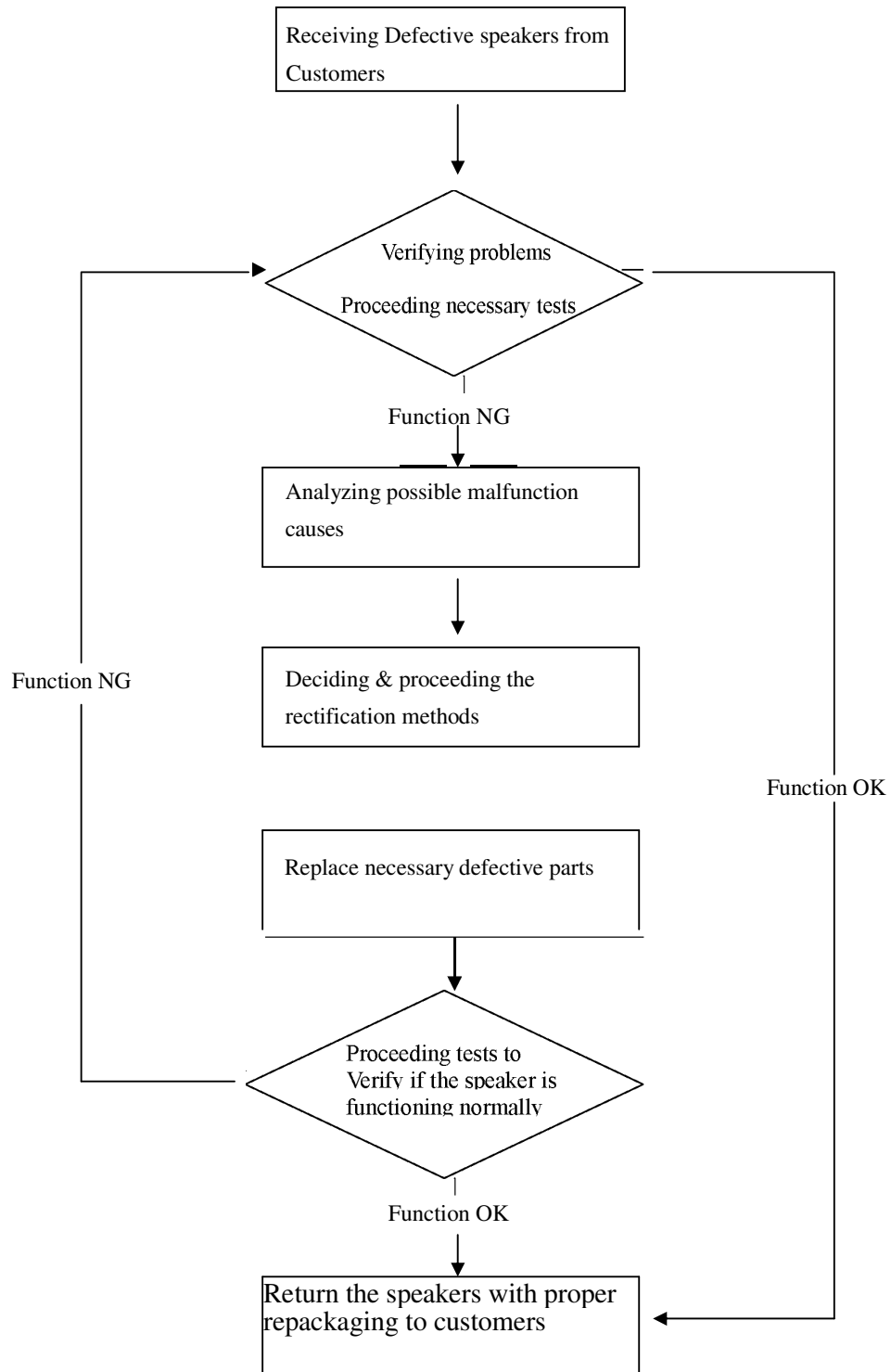
Disconnect the AC power cord from the AC outlet before performing any maintenance on the speakers .

Do not perform any maintenance with wet hand .

Prevent foreign substances, such as water, other liquids or chemicals , From entering the speakers while performing maintenance procedures on the speakers .

# Chapter 1. How to Handle Defective Returns

## Overview



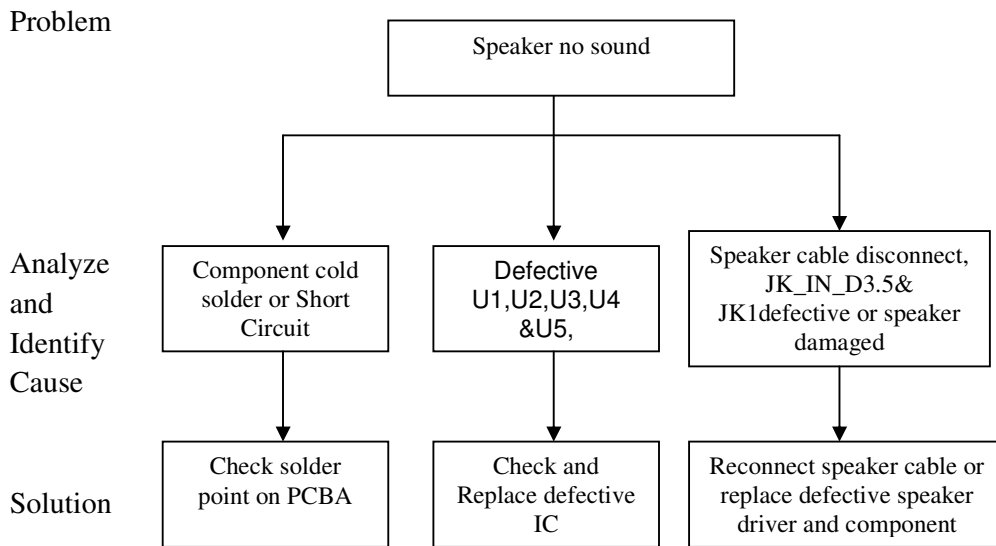
Problems

Item	Problem Description
1.1	Speaker no sound
1.2	Power LED no light
1.3	Headphone no sound
1.4	Bass/Volume no function

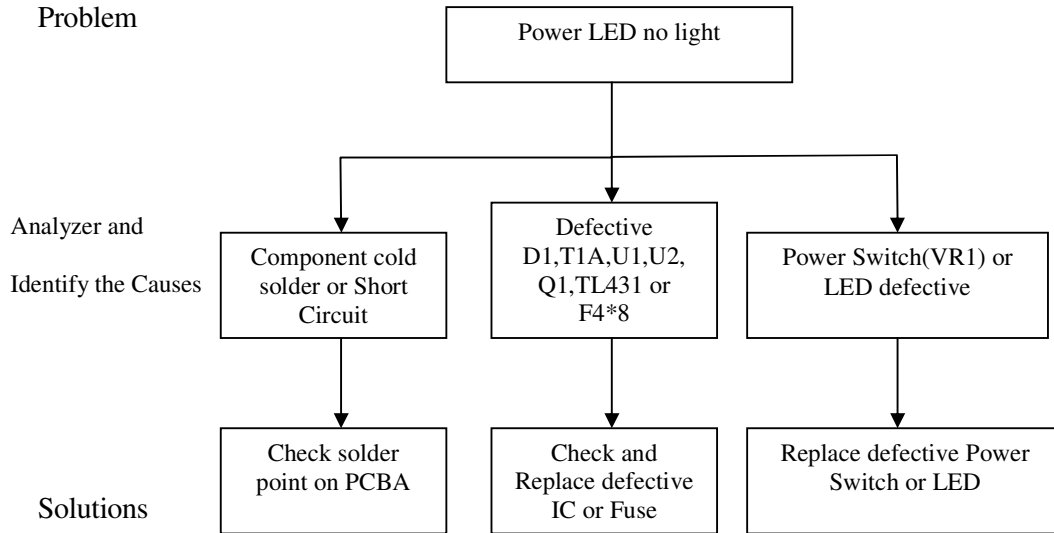
Attention

Please follow the numbered sequence marked within parenthesis given in individual Flow chat, in that this is the best-recommended sequence to rectify the problems.

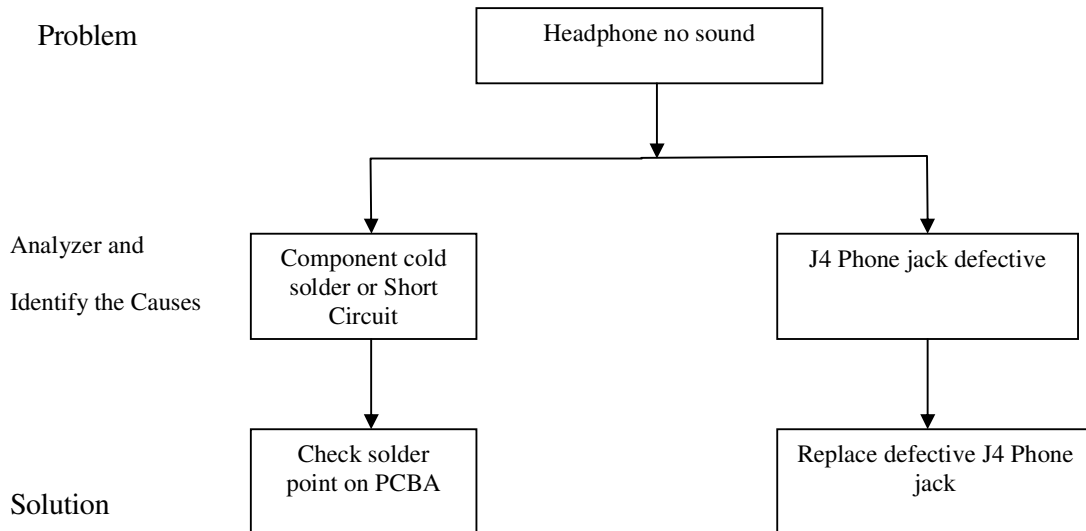
1.1 One or more channels no sound (Line in/Audio in jack no function)



### 1.2 Power LED no light

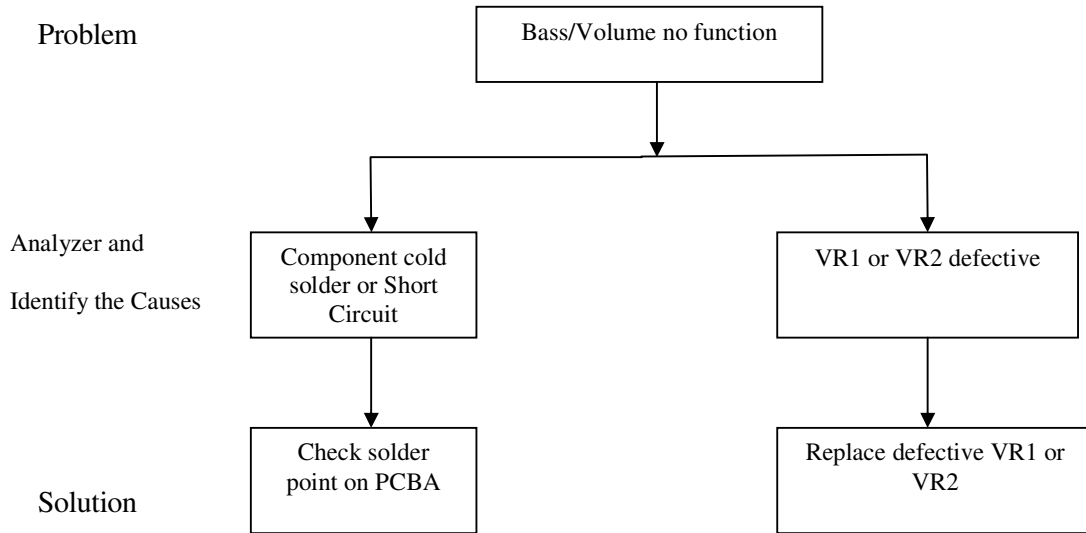


### 1.3 Headphone no sound





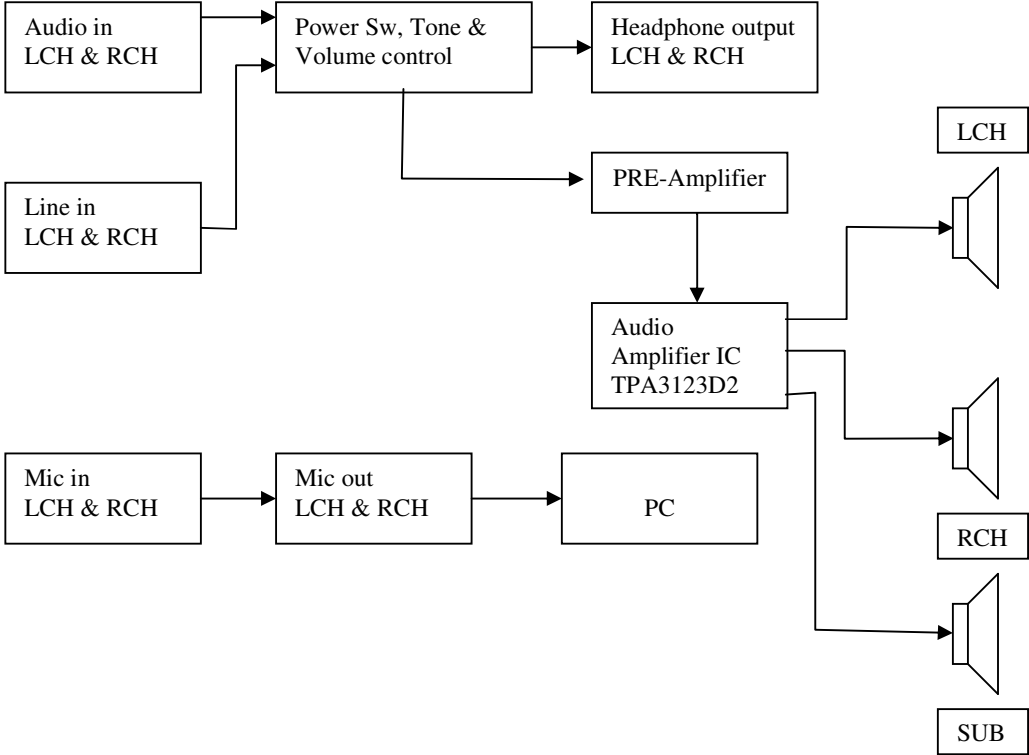
### 1.4 Bass/Volume no function



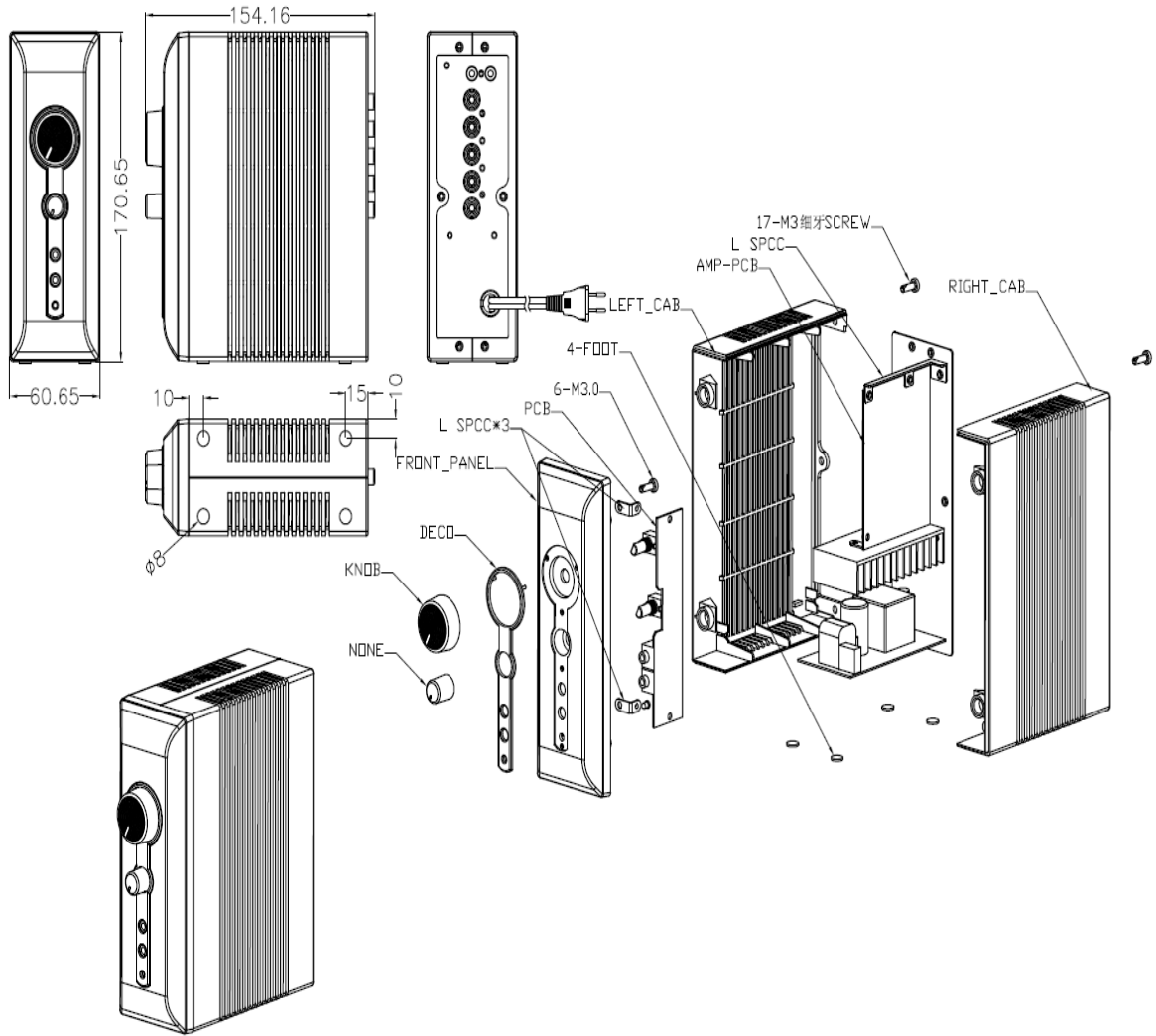
## Chapter 2. Specifications

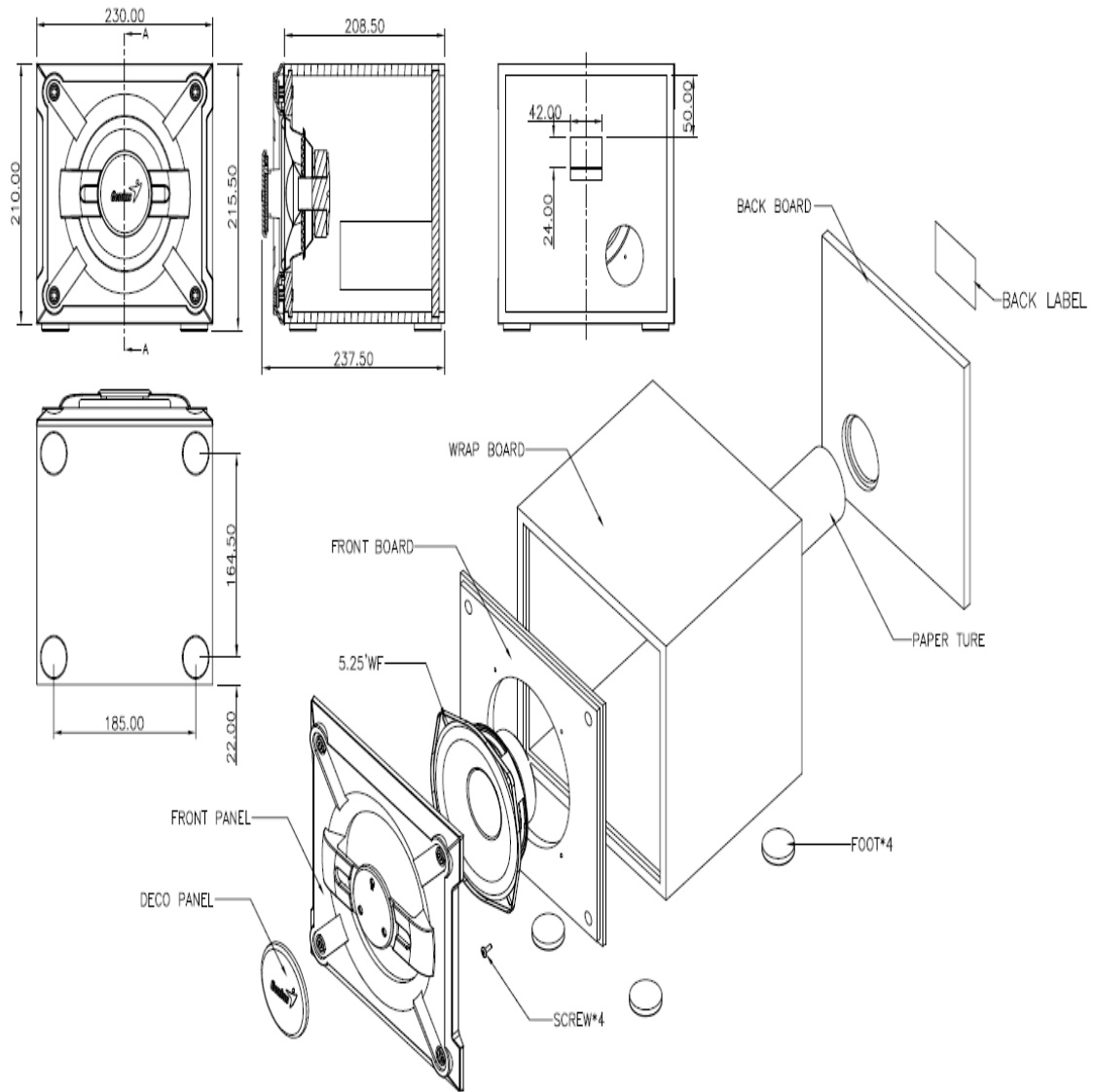
NO.	Description	Unit	Specifications
1	Out Power at THD 10%(Sub)	W	$\geq 40$
2	Out Power at THD 10%(Sat)	W	$\geq 15$
3	Sensitivity(Sub)	mV	$130 \pm 30$
4	Sensitivity(Sat)	mV	$600 \pm 60$
5	Freq. Response (1KHz -3dB)	Hz	23~126
6	Freq. Response (1KHz -3dB)	Hz	119~20K
7	Separation	dB	$\geq 40$
8	S/N ratio	dB	$\geq 70$
9	Hum & Noise (Vol.: max)	mV	$\leq 2$

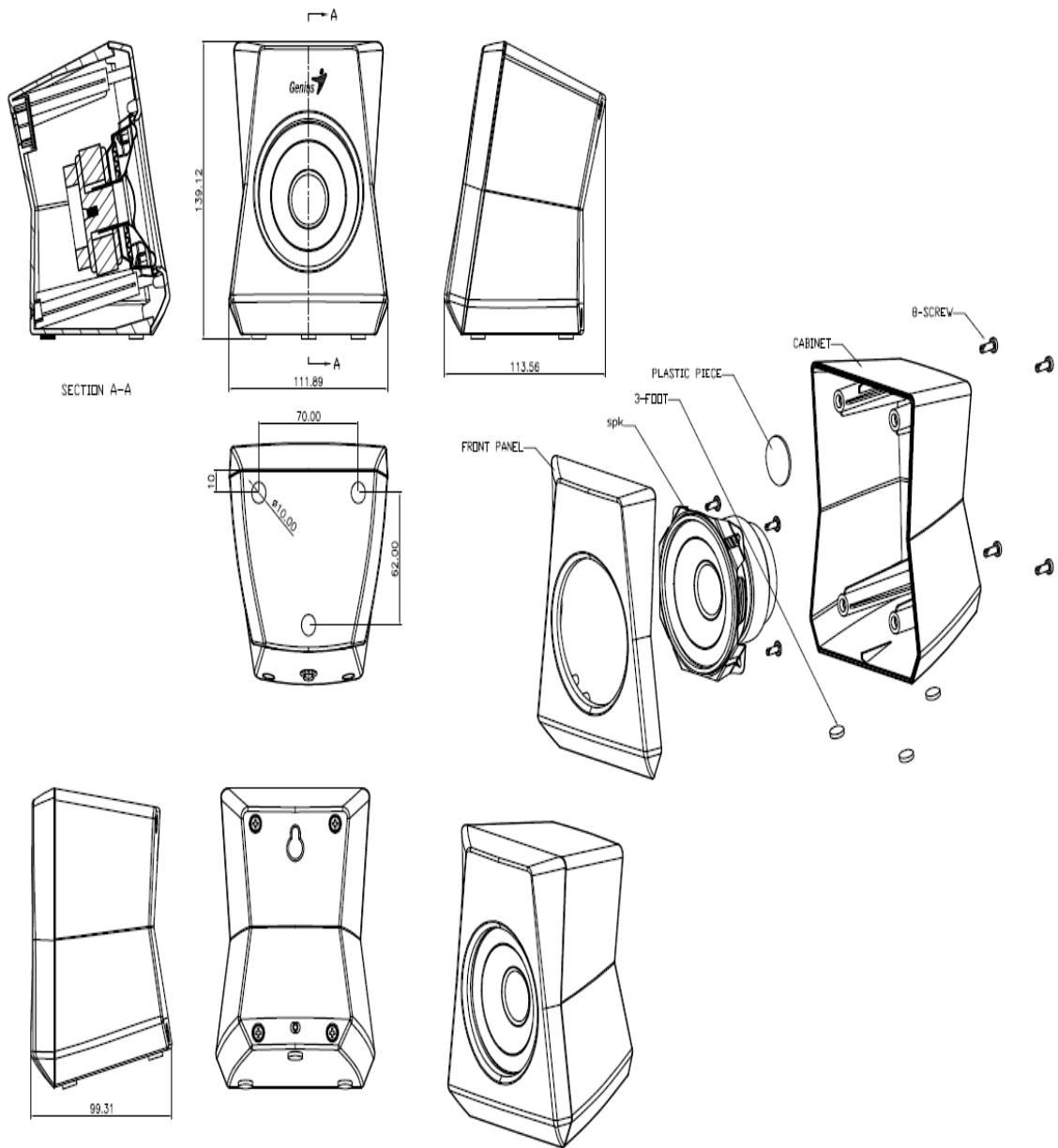
# Chapter 3 Block Diagram



# Chapter 4. Exploded View







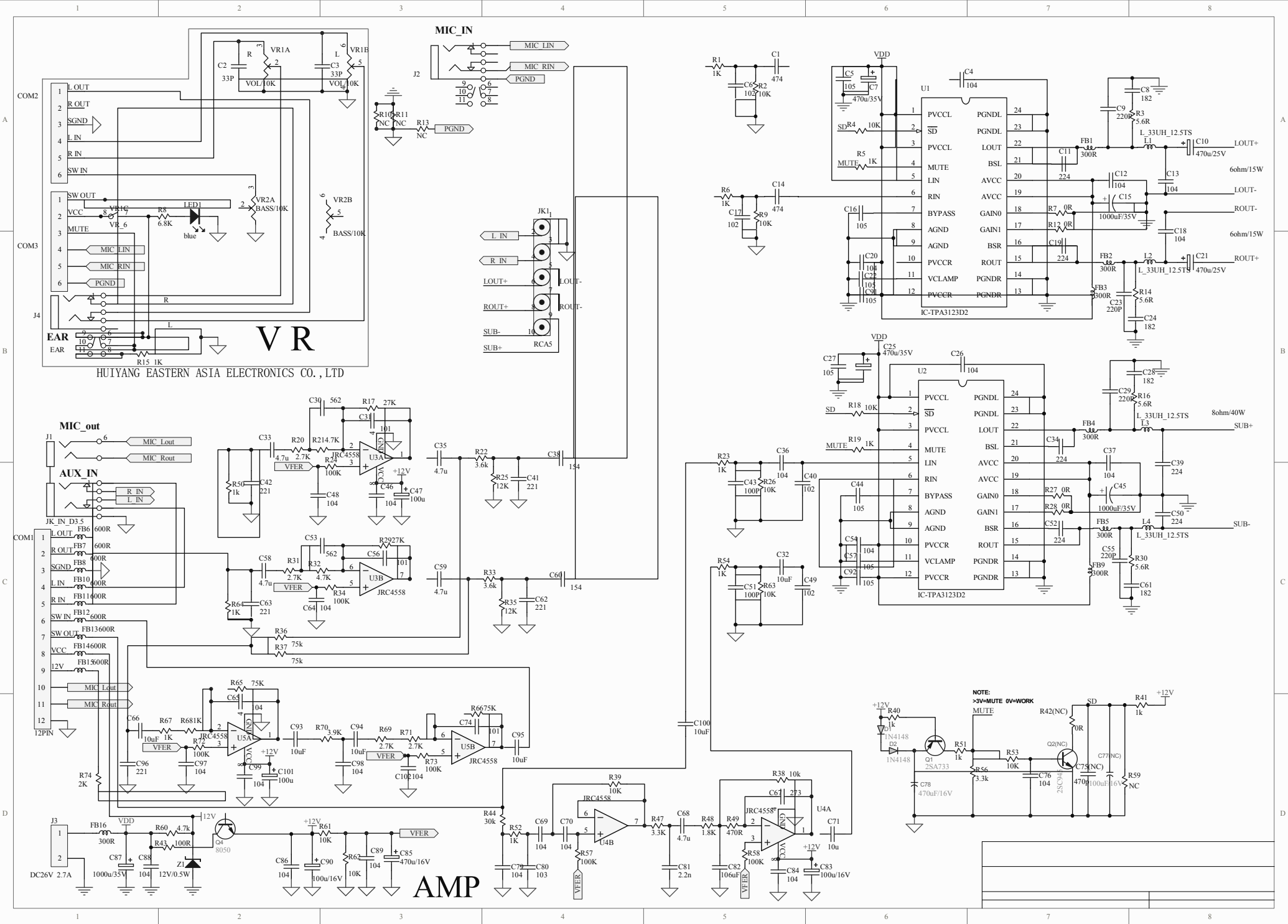
## Chapter 5. Part List

No	DESCRIPTION	Qty	UNIT	Part No.
1	TPA3123D2 IC	1	U1,U2	
2	JRC4558 SMD SOP8 IC	1	U3,U4, U5	
3	Photocoupler EL817A	1	U2	
4	F09-1028009-00 Transformer	1	T1A	
5	Bridge Rectifier	1	D1	
6	STEREO CABLE	1		VMC700002-00 10
7	RCA CABLE	1		VRC220001-002 0
8	RCA CABLE	1		VRC155007-002 0
9	POWER CORD 2P	1		VPE003012-002 0
10	SPK UNIT	1		FSA511530-362 4
11	SPK UNIT	1		FSB524065-68 0
12	RCA CABLE	1		VRC155007-001 0
13	RCA CABLE	1		VRC155007-003 0

## Chapter 6. Schematic Diagram

Pls refer to The Attachment

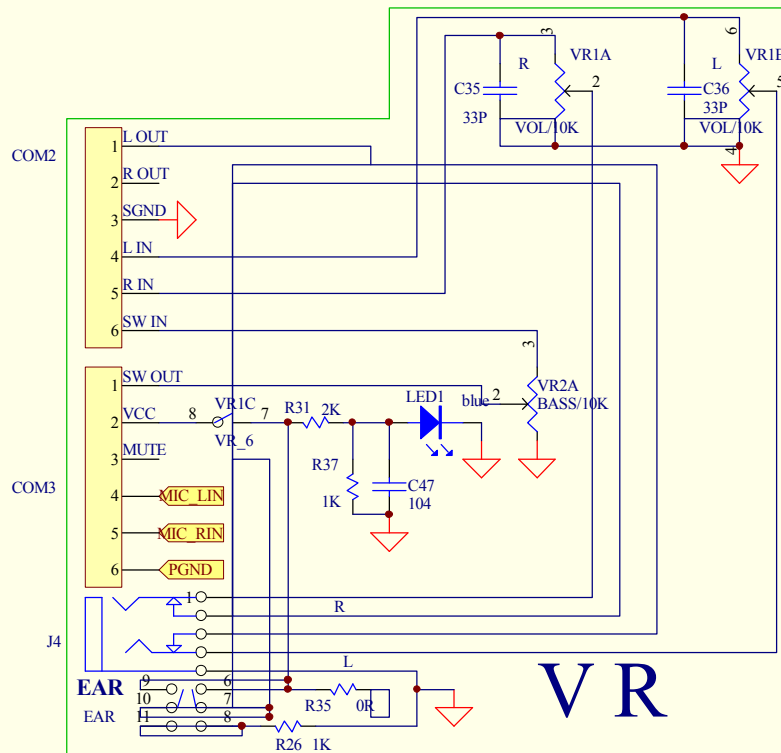




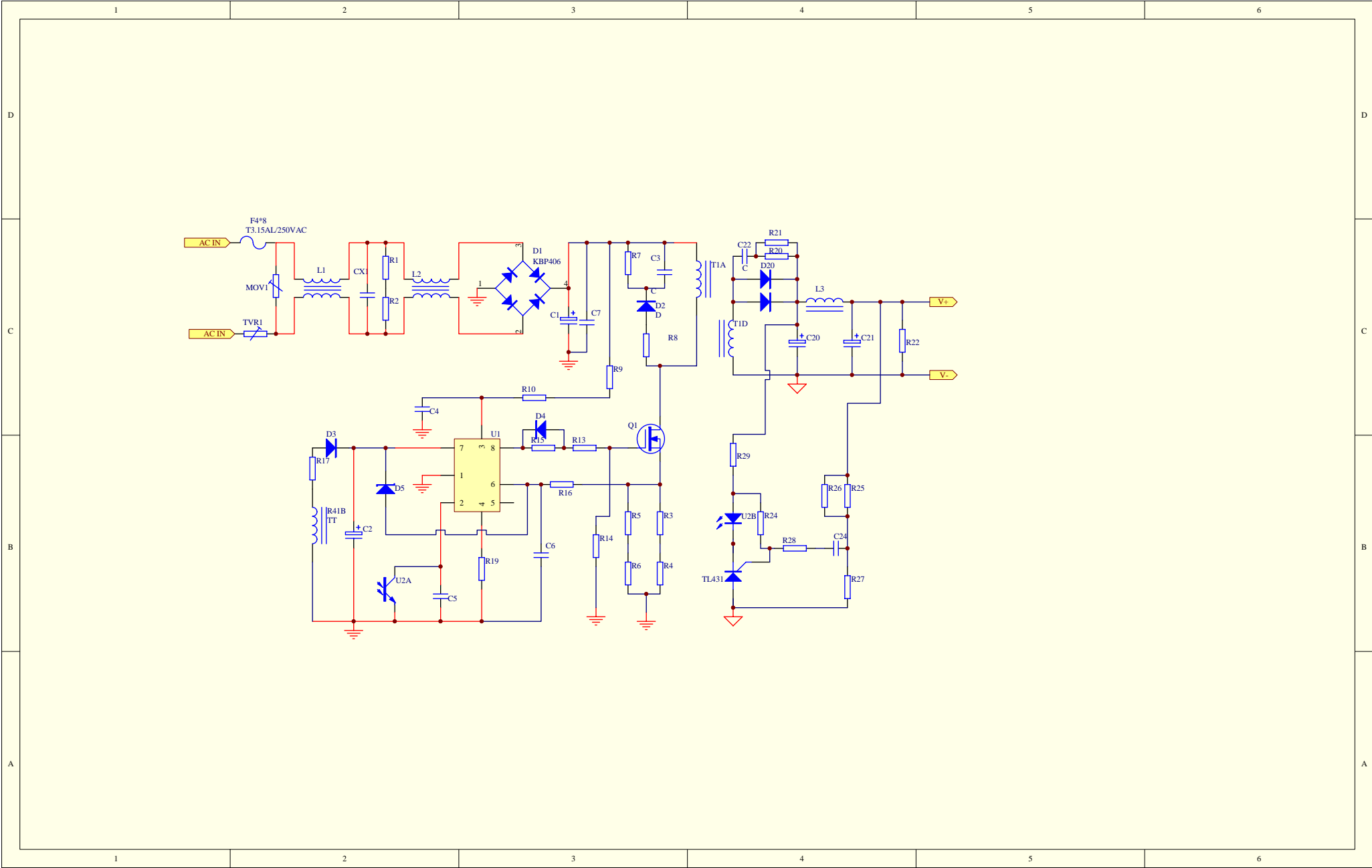
HUIYANG EASTERN ASIA ELECTRONICS CO., LTD

AMP

NOTE:  
>3V-MUTE 0V-WORK



Tit		
i	.	i
e:		



## Chapter 7. Important Notes

### 7.1 Packing Requirement for Sending the PCB Assembly by Post

PCB assembly is a kind of sophisticated electronic circuit board. Well packing will be required when sending them by post.

\* Some sophisticated IC components are mounted on the PCB assembly, hence it is necessary to pack each PCB assembly with a separate static protecting bag, in order to avoid static electricity.

\* Reliable external packing is also very important when sending PCB assembly by post, in that it would avoid unnecessarily lost or damage.

### 7.2 Short of Spare Parts while Repairing a Speaker System

If you are short of spare parts when you have some speaker systems waiting to be repaired, it would be recommended to take the necessary parts from one speaker system, so that you may have the as many speaker systems.