

SERVICE GUIDE

KYE SYSTEMS CORP.



SP-HF1800A

Version : 1.0

Revision History

Version	Date	Change
1.0	7/16/2009	

Table of Contents

Revision History	2
Table of Contents	3
Getting Started	4
Conventions Used in this Guide	4
Safety Precautions	4
Chapter 1. How to Handle Defective Returns.....	5
1.1 Overview	5
1.2 Problems	6
1.2.1 One or more channels no sound	7
1.2.2 Power LED (indicator) no light.....	8
1.2.3 Volume , Treble, Bass no function.....	8
Chapter 2. Specifications	9
Chapter 3. Block Diagram	10
Chapter 4. Exploded View	11
Chapter 5. Part List	13
Chapter 6. Schematic Diagram	14-15
Chapter 7. Important Notes	16
7.1 Packing Requirement for Sending the PCB Assembly by Post	16
7.2 Short of Spare Parts while Repairing a Speaker System	16

Getting Started

Conventions Used in this Guide



Pay Special Attention : Instructions that are important to remember and may prevent mistakes .

Caution : Information that, if not followed, may result in damage to the product .

Safety Precautions

The following precautions should be observed in handling the speaker Described in this guide :

Place the speakers on a flat, level and stable surface.

Do not place the speakers in environments subject to mist, smoke, vibration, excessive dust, salty or greasy air, or other corrosive gases and fumes.

Do not drop or jolt the speakers.

Do not allow anything to drop into the subwoofer case through its ventilator, as it could result in fatal electric shock or fire .

Place the unit far enough from other equipments for good heat dissipation .

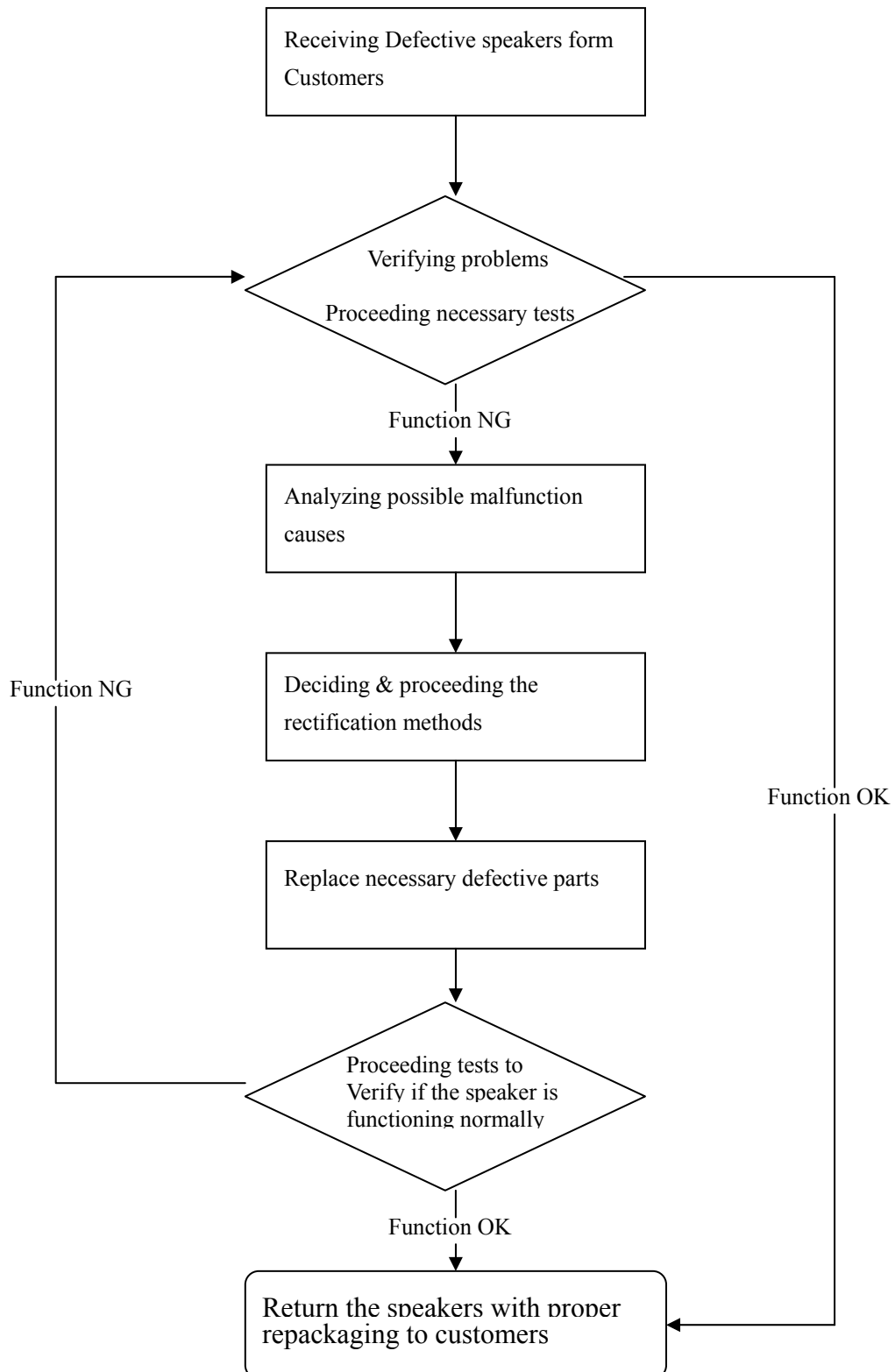
Disconnect the AC power cord from the AC outlet before performing any maintenance on the speakers .

Do not perform any maintenance with wet hand .

Prevent foreign substances, such as water, other liquids or chemicals , From entering the speakers while performing maintenance procedures on the speakers .

Chapter 1. How to Handle Defective Returns

1.1 Overview



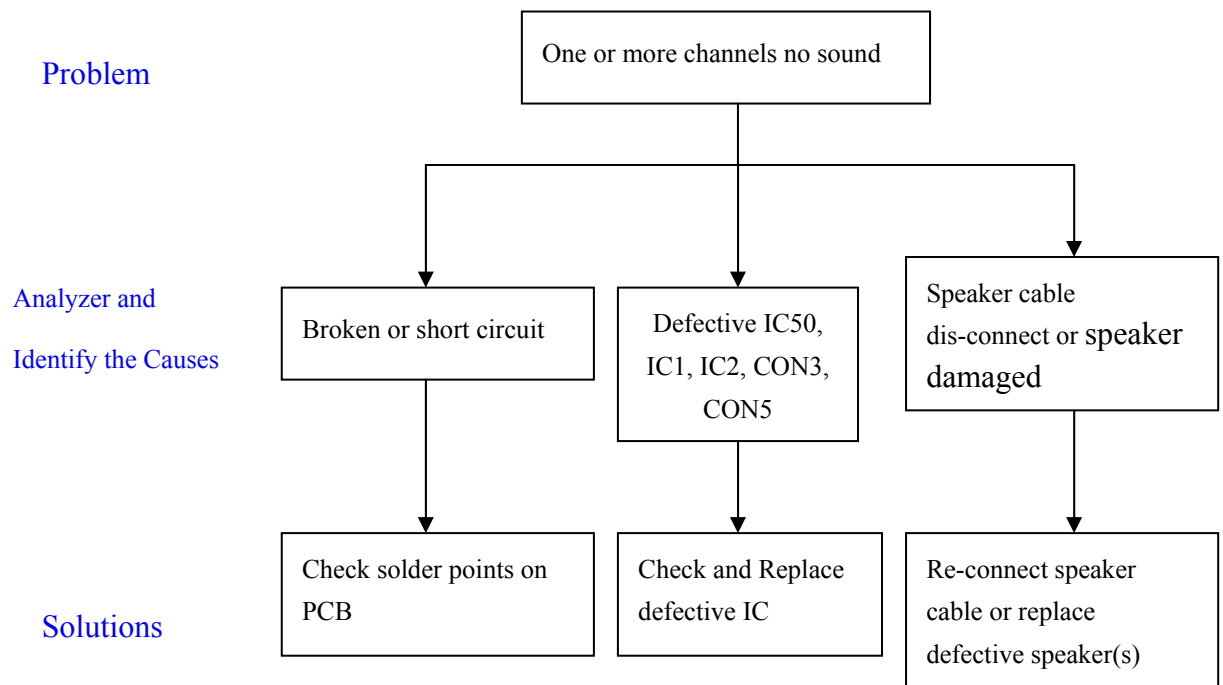
1.2 Problems

Item	Problem Description
1.2.1	One or more channels no sound
1.2.2	Power LED (indicator) no light
1.2.3	Volume , Treble , Bass no function

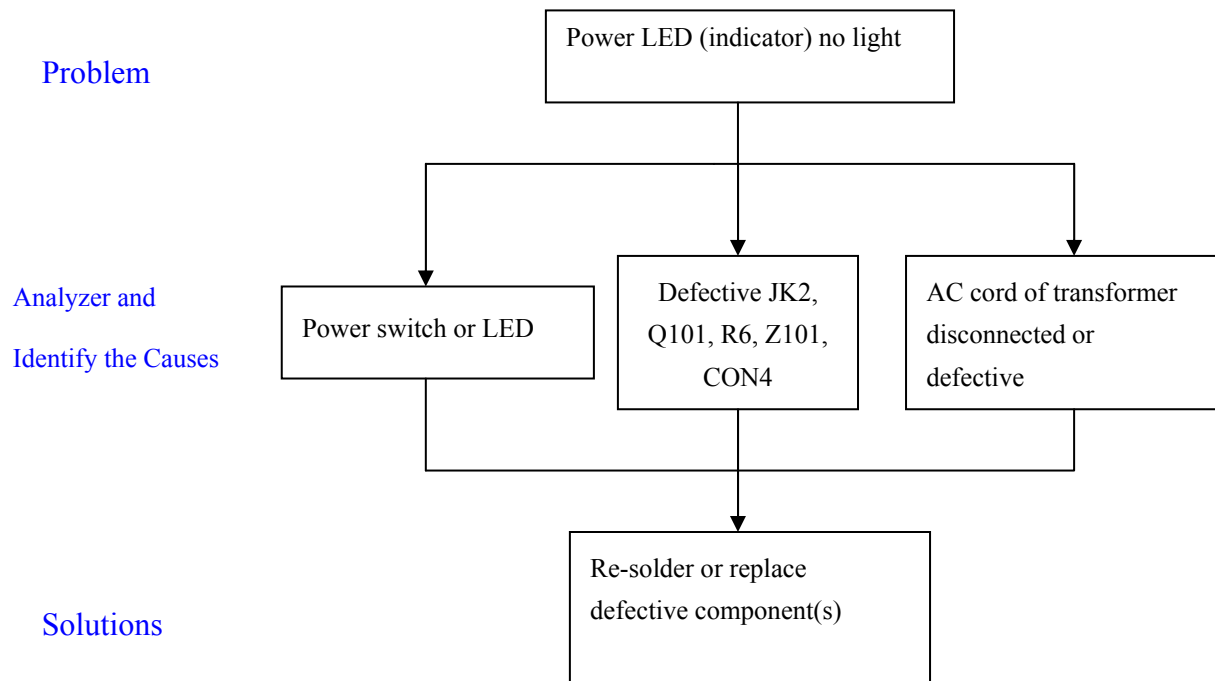
⚠ Attention

Please follow the numbered sequence marked within parenthesis given in individual Flow chat, in that this is the best-recommended sequence to rectify the problems .

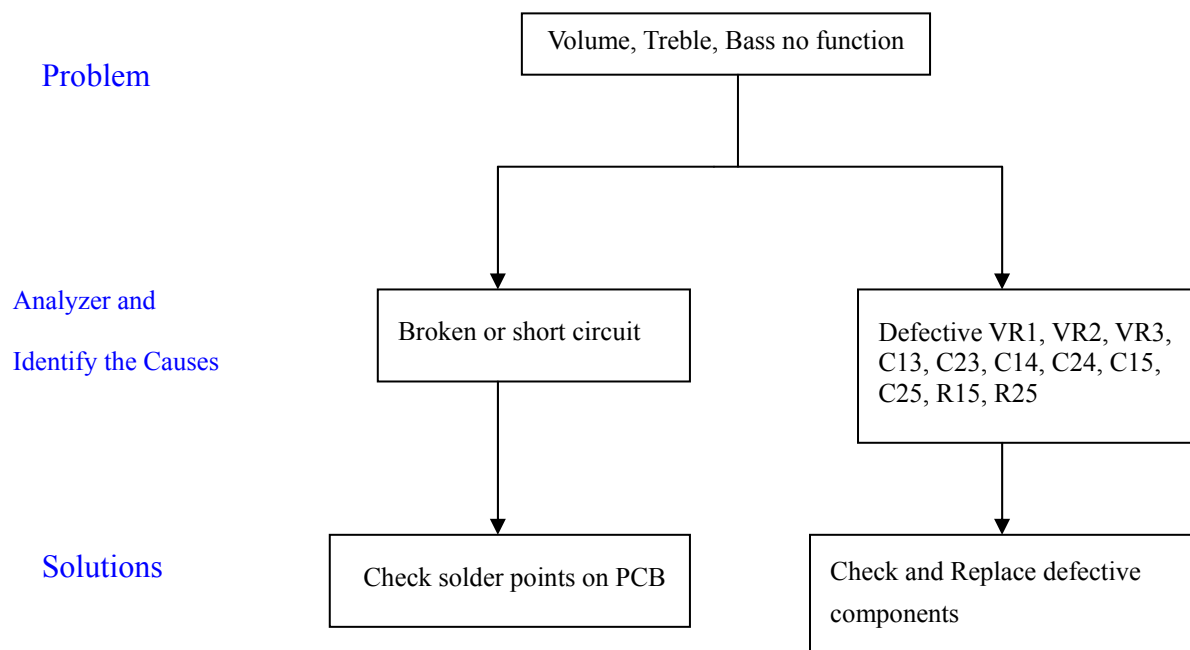
1.2.1 One or more channels no sound



1.2.2 Power LED (indicator) no light



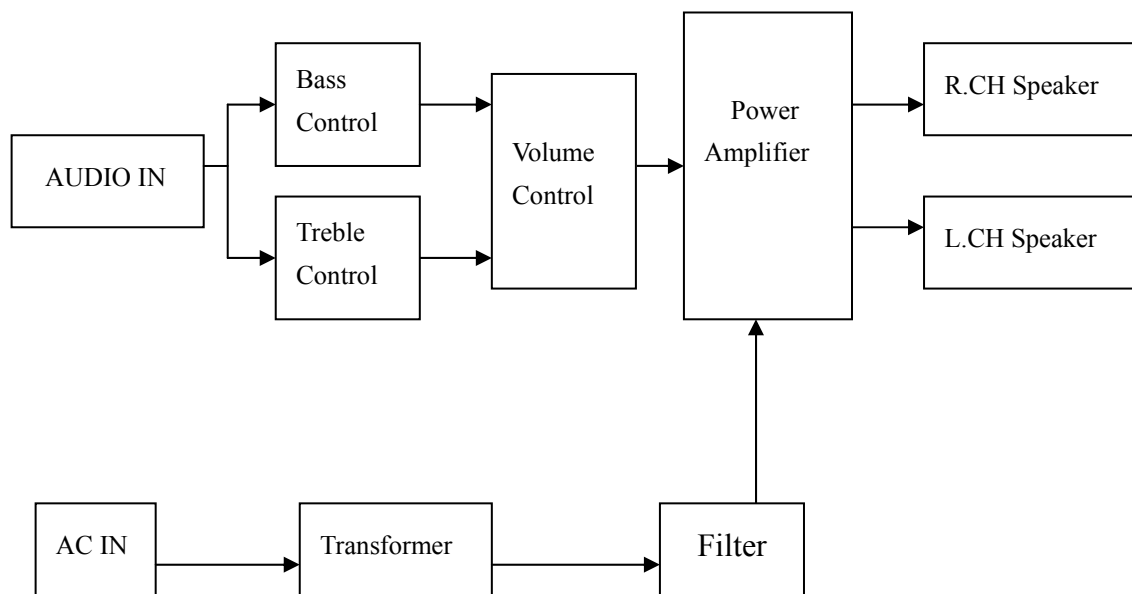
1.2.3 Volume , Treble , Bass no function



Chapter 2. Specifications

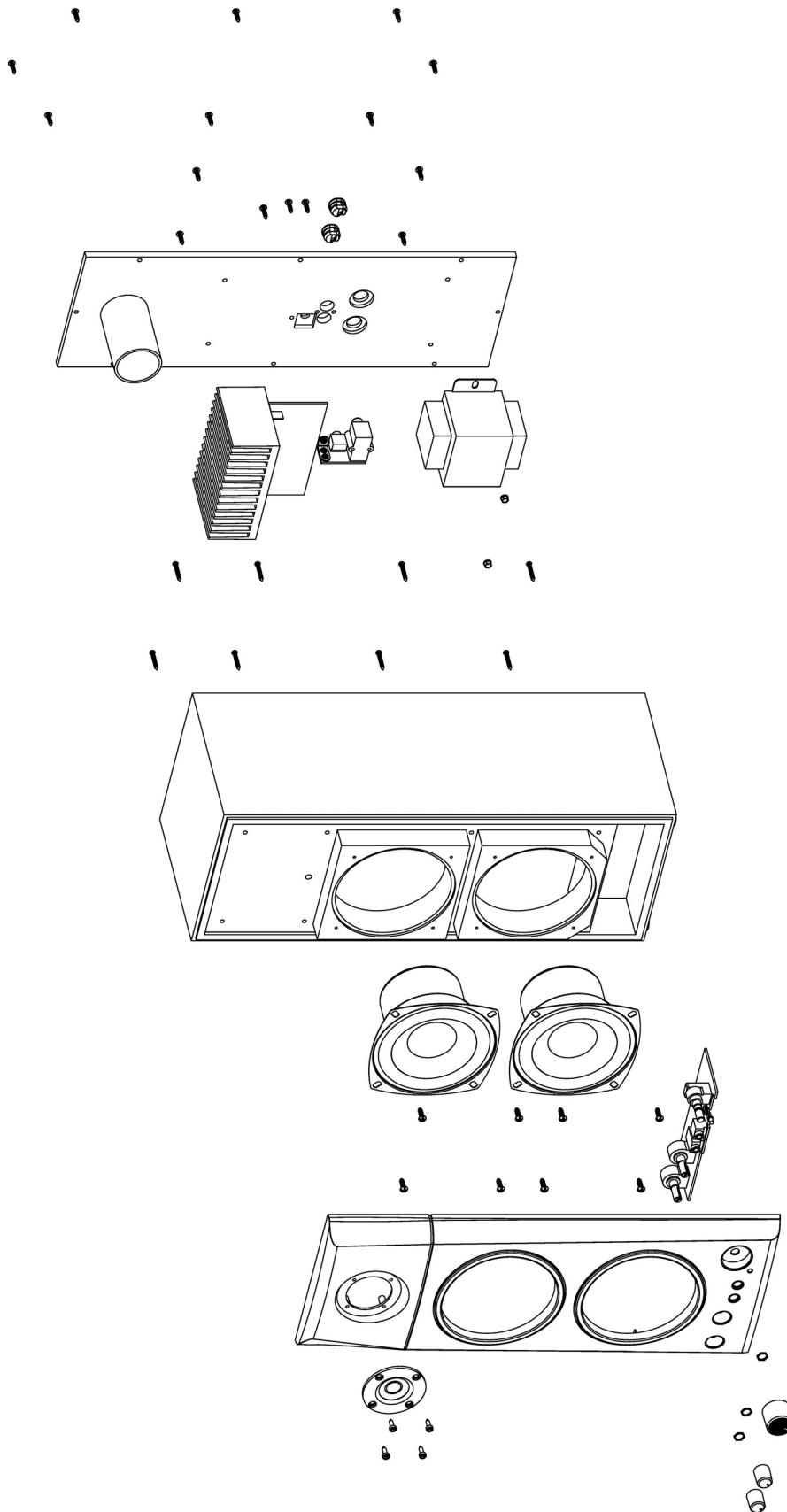
NO.	Description	Unit	Specifications
1	Out Power at THD 10%	W	≥ 25
2	Sensitivity	mV	600 ± 60
3	Freq. Response (Ref:-3dB)	Hz	20Hz~20KHz $\pm 10\%$
4	Separation	dB	≥ 40
5	S/N ratio	dB	≥ 70
6	Hum & Noise Vol:max	mV	≤ 2

Chapter 3. Block Diagram

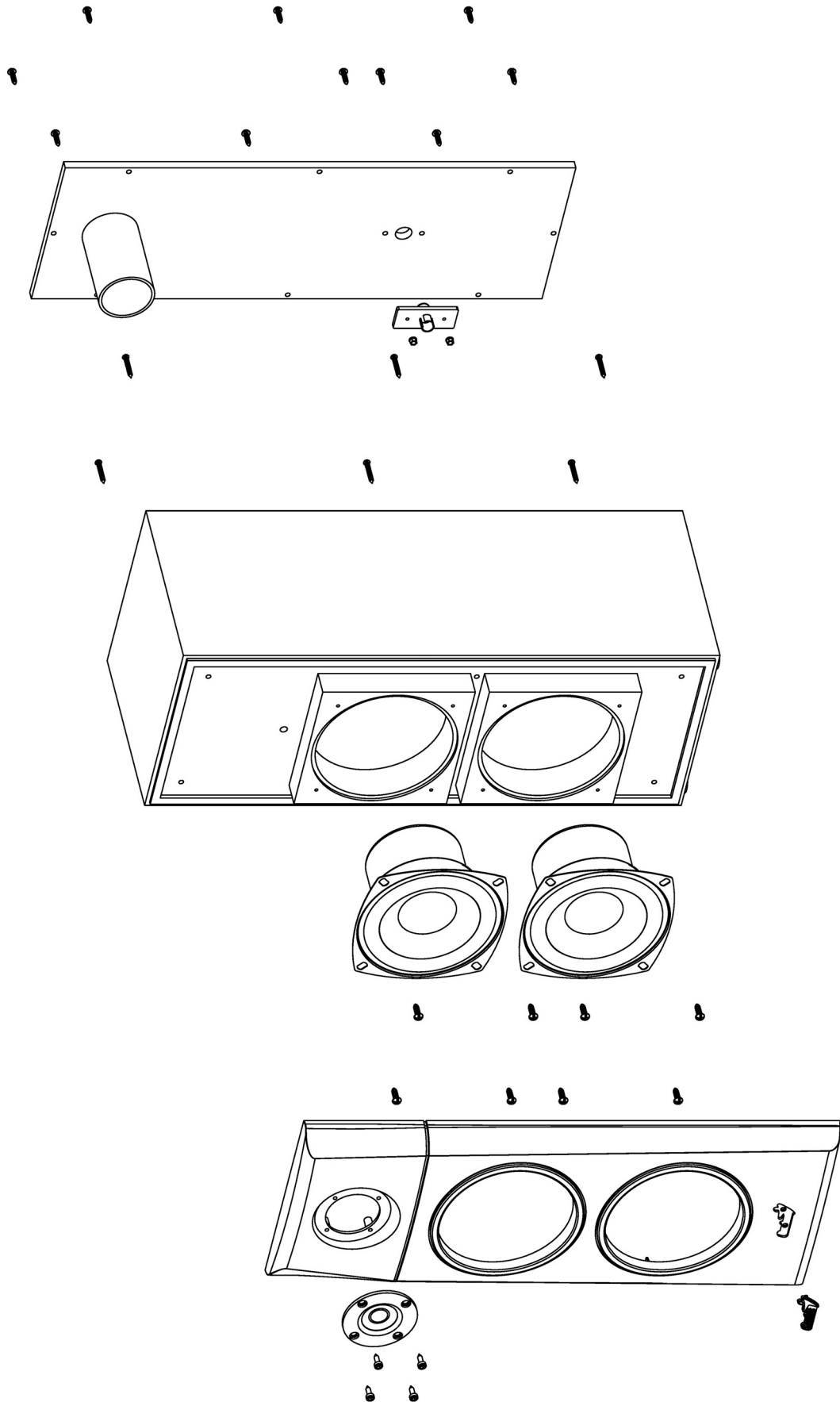


Chapter 4. Exploded View

Host



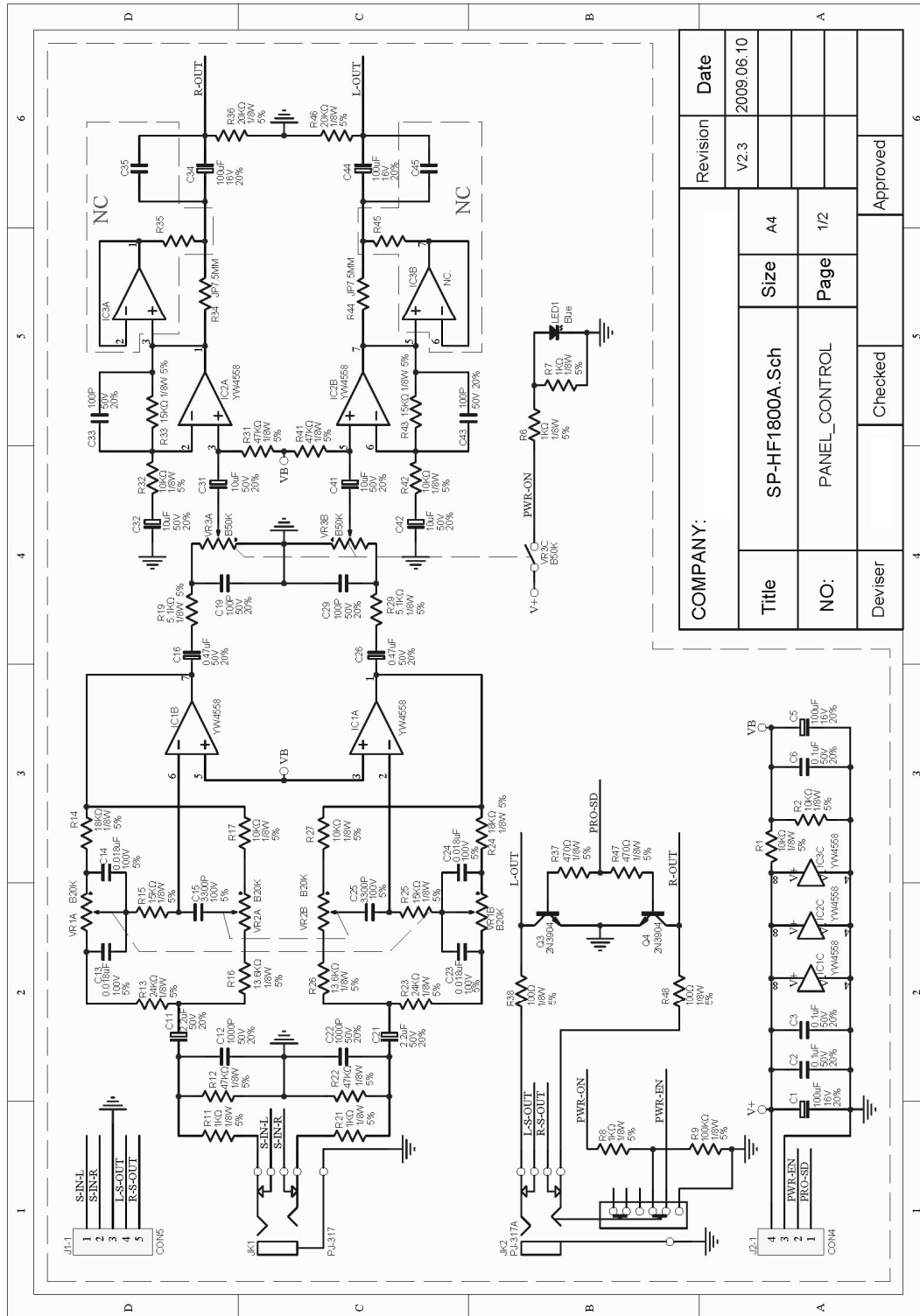
Satellite



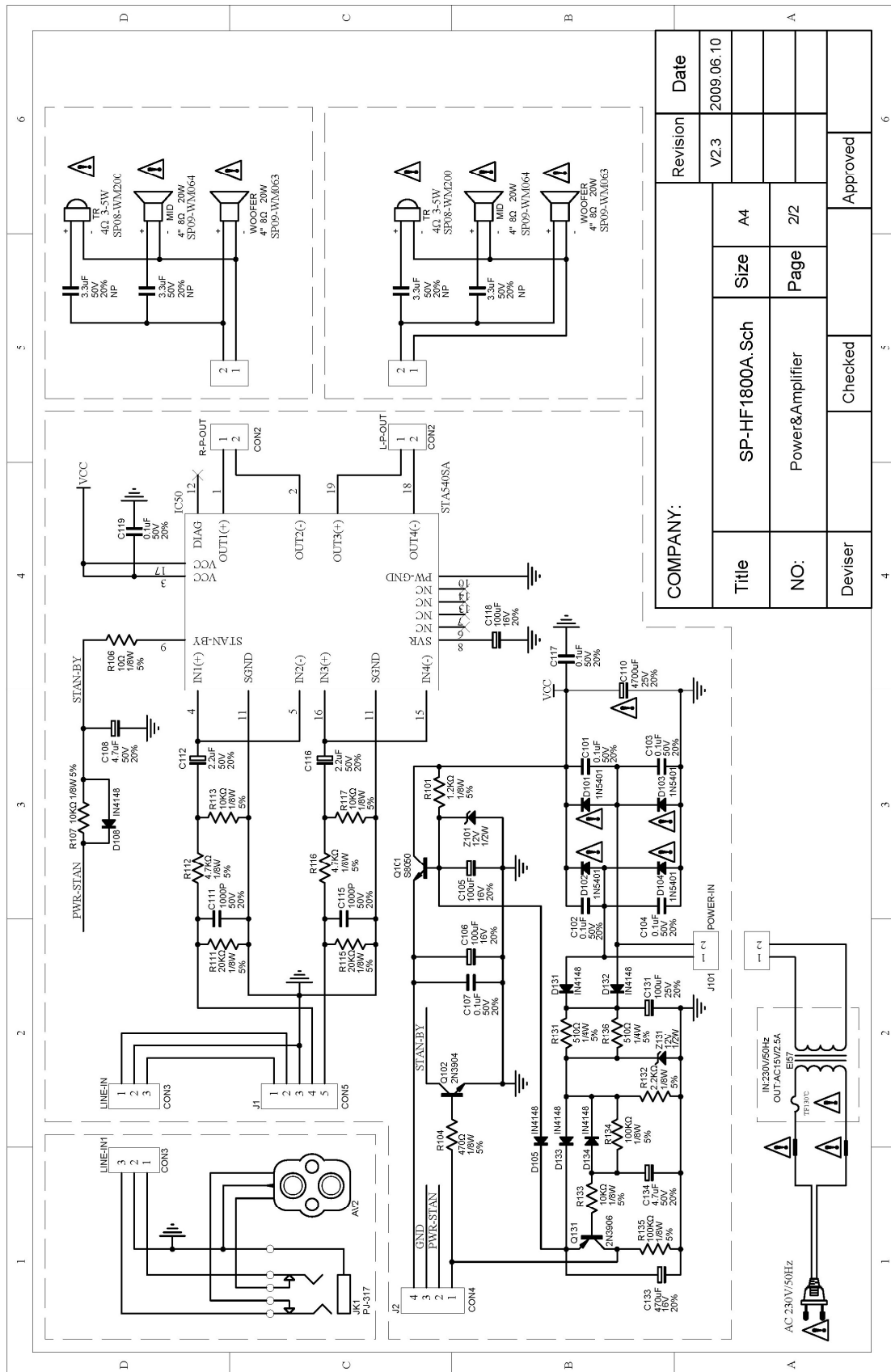
Chapter 5. Part List

No.	DESCRIPTION	Qty	UNIT	Part No.
1	SP-HF1800A/Body/Satellite	1	PC	30-101-01
2	Woofers Speaker, 4" 8 ohm 20W	2	PC	E1049-45
3	Midrange Speaker, 4" 8 ohm 20W	2	PC	E1049-44
4	Tweeter Speaker, 52mm 4 ohm 3W	2	PC	E1049-43
5	Rubber pad (SP-HF1800A)	8	PC	30-100-01
6	SP-HF1800A/Body/Host-120V-US	1	PC	30-101-02
7	SP-HF1800A/Body/Host-220V-AR			30-101-03
8	SP-HF1800A/Body/Host-230V-EU			30-101-04
9	SP-HF1800A/Body/Host-240V-AU			30-101-05
10	SP-HF1800A/Body/Host-240V-UK			30-101-06
11	PCBA, SP-HF1800A	1	PC	30-101-07
12	IC, STA540SA	1	PC	E1065-48
13	IC, (YW)UTC4558	2	PC	25-100-05
14	Transformer, 120V:15VAC & 2.5A	1	PC	E1074-148
15	Transformer, 230V:15VAC & 2.5A			E1074-149
16	Transformer, 240V:15VAC & 2.5A			E1074-150
17	Audio Cable, 3.5mm Male(Green) to RCA (Red/White), SP-HF18000A	1	PC	E1066-31
18	Gift Box, SP-HF1800A	1	PC	12000504100-A
19	Manual, SP-HF1800A	1	PC	12030420100-A
20	Cushion(Top/Bottom), SP-HF1800A	1	SET	30-102-01
21	S/N Label (on Host & Gift Box), SP-HF1800A	2	PC	30-102-02
22	Carton, SP-HF1800A	1/2	PC	12100393100-A

Chapter 6. Schematic Diagram



COMPANY:		Revision	Date
		V2.3	2009.06.10
Title	SP-HF1800A.Sch	Size	A4
NO:	PANEL_CONTROL	Page	1/2
Deviser	Checked	Approved	



COMPANY:

Title	SP-HF1800A.Sch	Size	A4
NO:	Power&Amplifier	Page	2/2
Deviser	Checked	Approved	
Revision	V2.3	Date	2009.06.10

Chapter 7. Important Notes

7.1 Packing Requirement for Sending the PCB Assembly by Post

PCB assembly is a kind of sophisticated electronic circuit board. Well packing will be required when sending them by post.

* Some sophisticated IC components are mounted on the PCB assembly, hence it is necessary to pack each PCB assembly with a separate static protecting bag, in order to avoid static electricity.

* Reliable external packing is also very important when sending PCB assembly by post, in that it would avoid unnecessarily lost or damage.

7.2 Short of Spare Parts while Repairing a Speaker System

If you are short of spare parts when you have some speaker systems waiting to be repaired, it would be recommended to take the necessary parts from one speaker system, so that you may have the as many speaker systems.