

NOTE TO RECIPIENT:
Pls check your documents against
this master list. Discrepancies
should be corrected ASAP.

TYPE OF DOCUMENT : Eng'g Document

UBC 60XL1-1

CATEGORY/MODEL: **UB-257ABC**

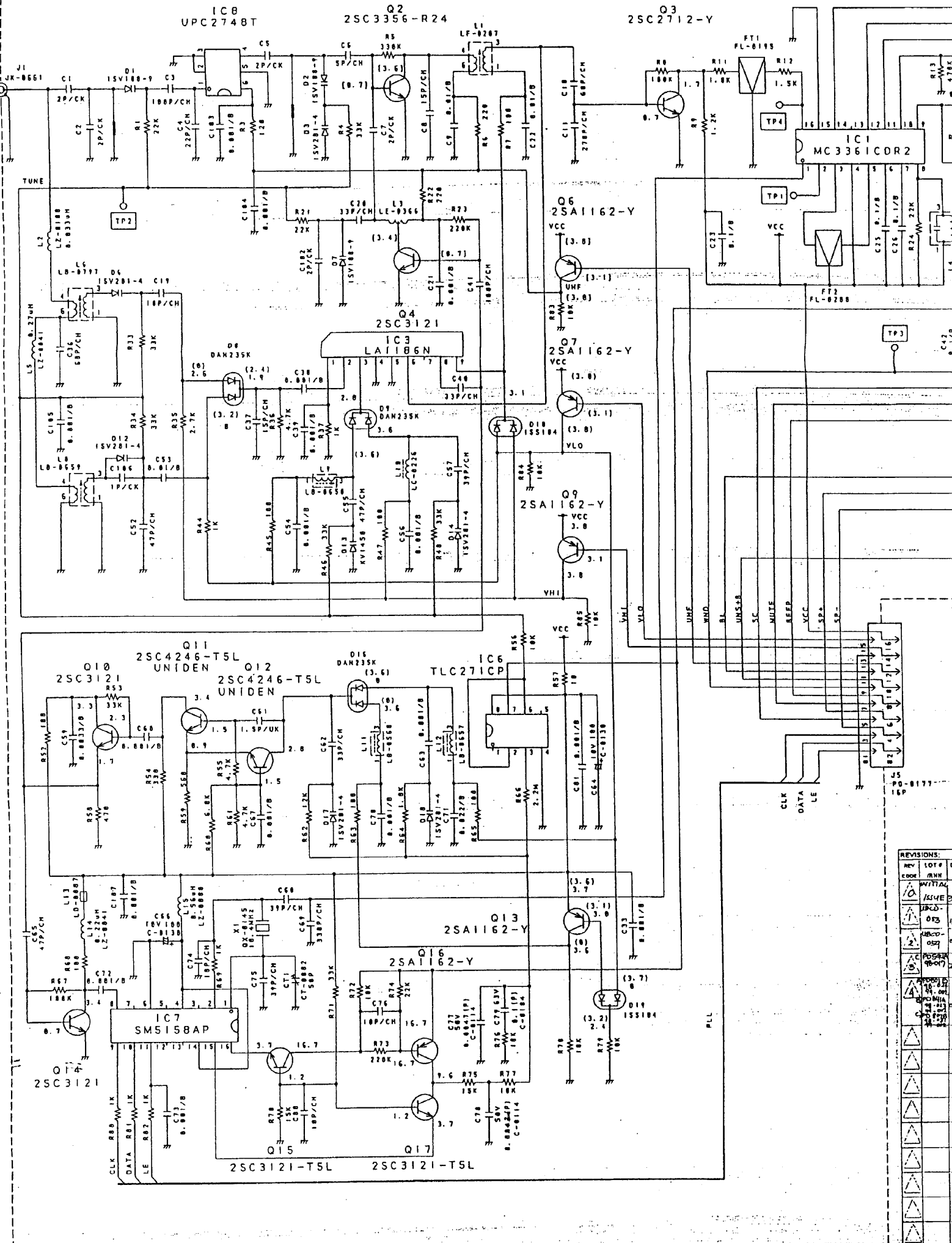
ISSUING DIVISION : Uniden Japan

DISTRI CODE: POA, PROD, IE, ENG'G

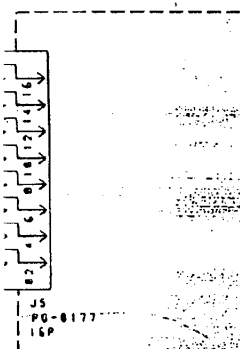
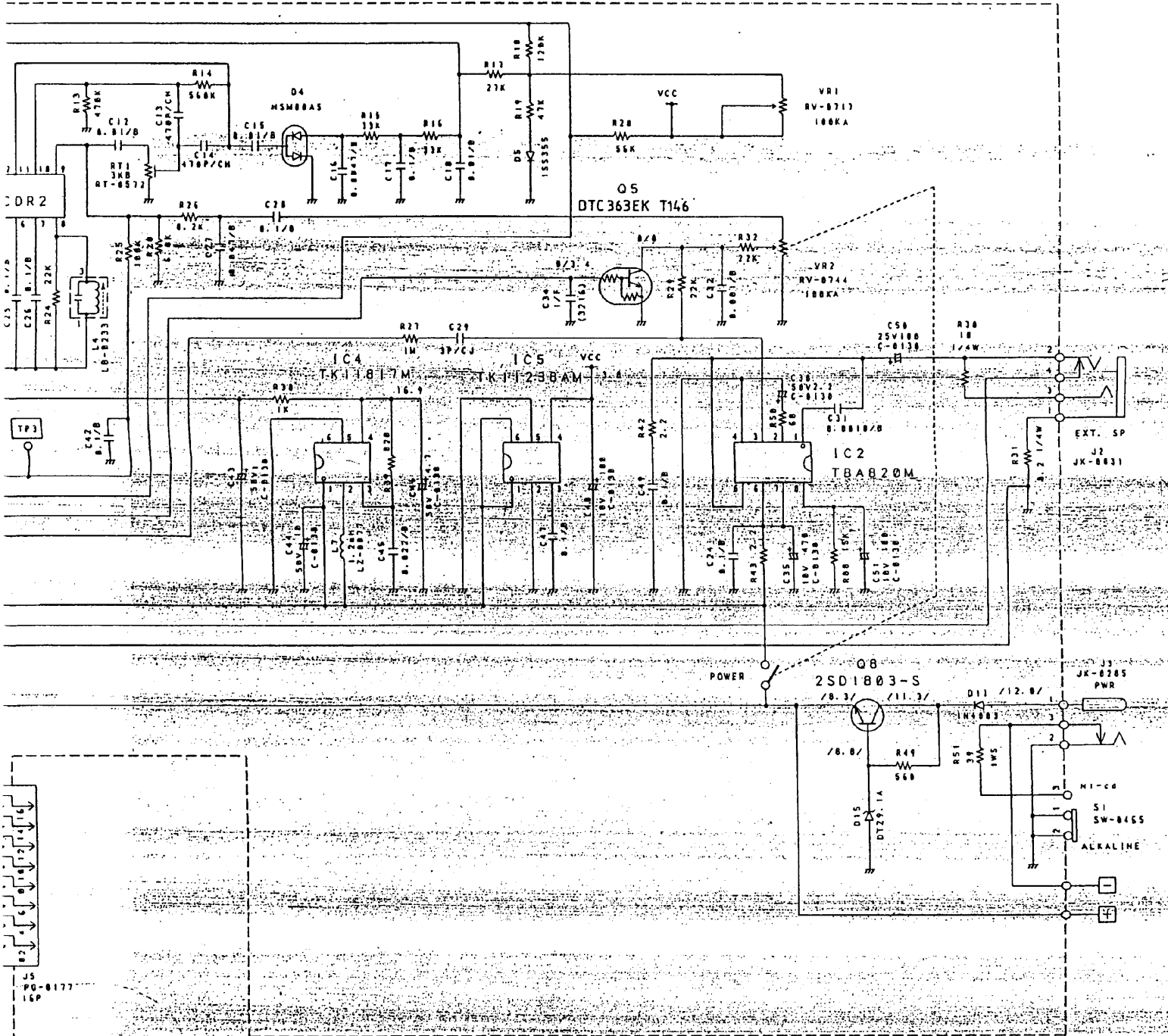
NO.	ENG'G DOC. NO	REV CODE	MODEL	BUYER'S MODEL	TITLE / REMARKS / DESCRIPTION	DATE (ddmmyy)			
						INT'L ISS	RCVD	UPDATE	DISTRI
1	E12-4814	3A	N/A	COM212	Schematic Diagram MAIN PCB	31/08/96	20/08/96	24/07/98 02/02/99	25/07/98 03/02/99
2	E13-4815	3A	N/A	COM212	Schematic Diagram MICOM PCB	31/08/96	20/08/96	10/07/98 02/02/99	12/07/98 03/02/99
3	E23-13382	4/5	N/A	COM212	Parts Layout MAIN ASS'Y TOP VIEW	31/08/96	20/08/96	02/02/98 02/02/99	04/02/98 02/02/99
4	E23-13383	3A	N/A	COM212	Parts Layout MAIN ASS'Y CHIP LAYOUT TOP VIEW	31/08/96	20/08/96	03/02/98 02/02/99	04/02/98 03/02/99
5	E23-13384	3A	N/A	COM212	Parts Layout MAIN ASS'Y CHIP BOTTOM VIEW	31/08/96	20/08/96	03/02/98 02/02/99	04/02/98 03/02/99
6	E23-13385	4/5	N/A	COM212	Parts Layout MICOM ASS'Y TOP VIEW	31/08/96	20/08/96	03/02/98 02/02/99	04/02/98 03/02/99
7	E23-13386	3A	N/A	COM212	Parts Layout MICOM ASS'Y CHIP LAYOUT TOP VIEW	31/08/96	20/08/96	10/07/98 02/02/99	13/07/98 03/02/99
8	E23-13387	3A	N/A	COM212	Parts Layout MICOM ASS'Y CHIP BOTTOM VIEW	31/08/96	20/08/96	03/02/98 02/02/99	04/02/98 03/02/99
9	E33-3827	4	N/A	COM212	Wiring Diagram	31/08/96	20/08/96	03/02/98 02/02/99	04/02/98 03/02/99
10	E54-2884	2	N/A	COM212	Alignment Procedure & Specifications	31/08/96	20/08/96	03/02/98	04/02/98
						31/08/96	20/08/96	04/06/97	05/06/97

Circuitry COM212 = UBC 60XL1-1

Notes : 1. INT'L ISS - the date the initial issue of document is written.
 2. RCVD - master copy received date.
 3. UPDT - the date the document is updated.
 4. DISTRI - the controlled copy stamp of the recipient.



REV	LOT #	D
10	WITIAL	
11	ALIVE	
12	DRD	
13	DRD	
14	DRD	
15	DRD	
16	DRD	
17	DRD	
18	DRD	
19	DRD	
20	DRD	
21	DRD	
22	DRD	
23	DRD	
24	DRD	
25	DRD	
26	DRD	
27	DRD	
28	DRD	
29	DRD	
30	DRD	



REV	LOT #	DATE	REV	CHK
10	WITAL	1/1/99	1	YH
11	WITAL	1/1/99	1	YH
12	WITAL	1/1/99	1	YH
13	WITAL	1/1/99	1	YH
14	WITAL	1/1/99	1	YH
15	WITAL	1/1/99	1	YH
16	WITAL	1/1/99	1	YH
17	WITAL	1/1/99	1	YH
18	WITAL	1/1/99	1	YH
19	WITAL	1/1/99	1	YH
20	WITAL	1/1/99	1	YH

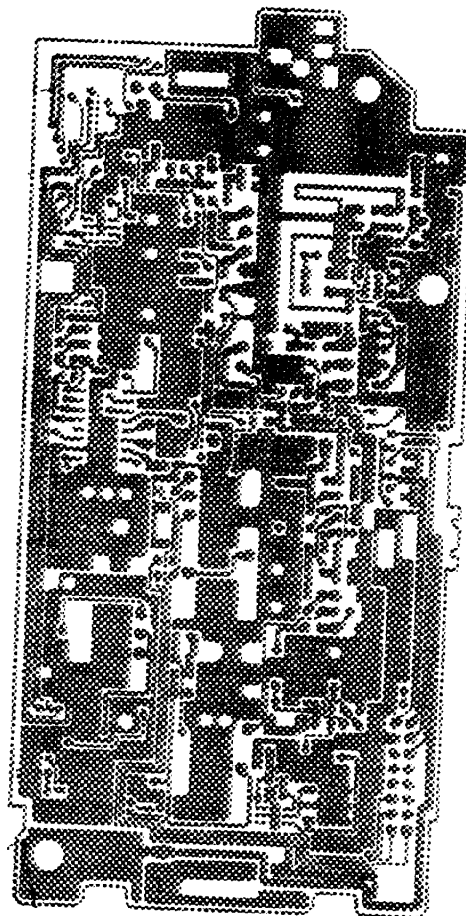
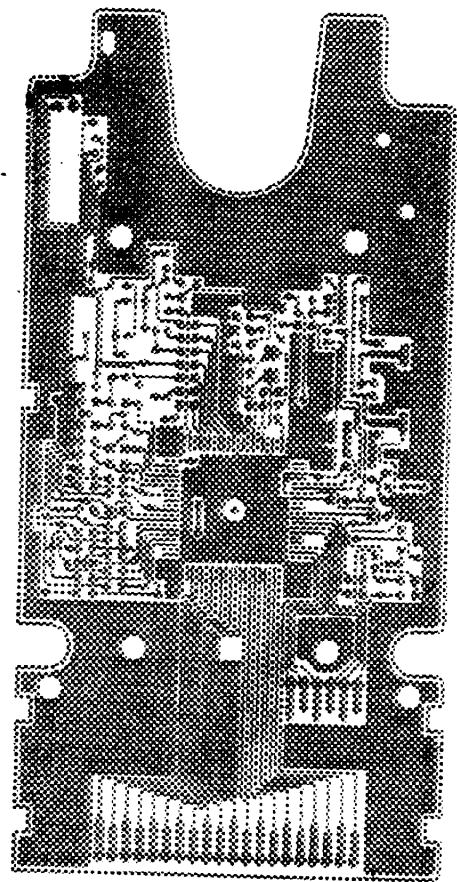
REF. NO.	UB-257A-B	UB-257C
AT951	AT-233	AT-216

- NOTES:
1. RESISTANCE VALUES ARE SHOWN IN OHMS UNLESS OTHERWISE NOTED. (K-KILO OHM, M-MEG OHM)
 2. RESISTOR WATTAGES ARE (1/10W) UNLESS OTHERWISE NOTED.
 3. CAPACITANCE VALUES ARE INDICATED IN MICRO FARADS UNLESS OTHERWISE NOTED. (P-MICRO-MICRO FARAD)
 4. CHIP PARTS ARE NOT SPECIFIED IN THIS DRAWING. PLEASE REFER TO THE PARTS LIST FOR THE CHIP PARTS.
 5. VOLTAGE IN [] SHOWS THE BAND CONDITIONS.
 6. VOLTAGE IN () SHOWS VHI-LOW BAND CONDITIONS.
 7. VOLTAGE IN NO-MARK SHOWS VHI-HIGH BAND CONDITIONS.
 8. VOLTAGE IN / / SHOWS SUPPLY 12 VDC AT POWER JACK CONDITIONS.
 9. VOLTAGE IN / SHOWS UNSQUELCHED / SQUELCHED CONDITIONS.

PHILIPPINES INC.
INTEGRATED DOCUMENT
CONTROL CENTER
MAR. 30. 1999
DATA ISSUED
CIRCULATED COPY

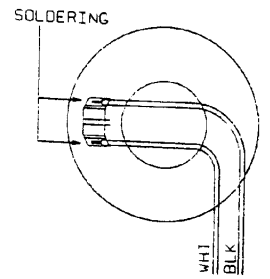
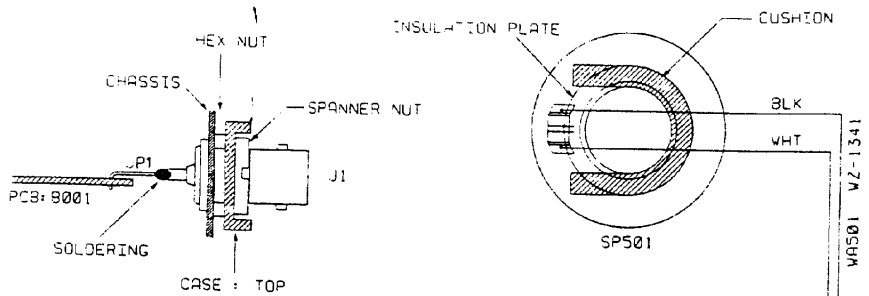
UNIDEN CORP.
NEW
AUG 16. 1998
DRAWING

DESIGN	DRAWN BY	UNIDEN No. C	MODEL No.
96.6.12	96.6.14	UB-257A-B	COM212
Y. HOSHI	Y. HOSHI	TITLE	MAIN PCB
CHECK BY	APPRO. BY	SCHEMATIC DIAGRAM	
		DRAWING No.	E12-4814
REV. 1		UNIDEN CORP.	

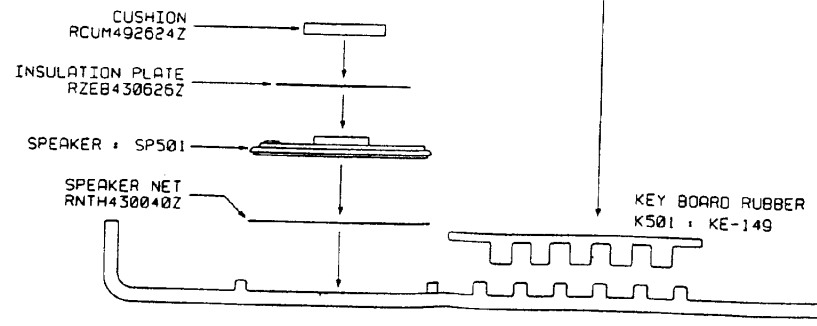
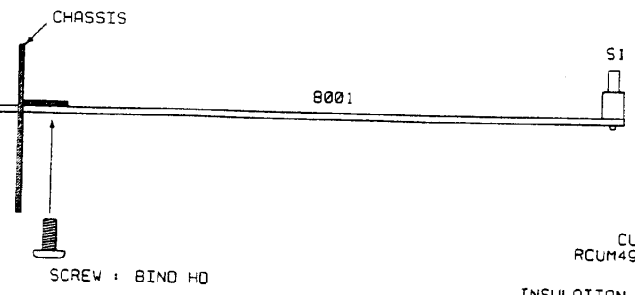
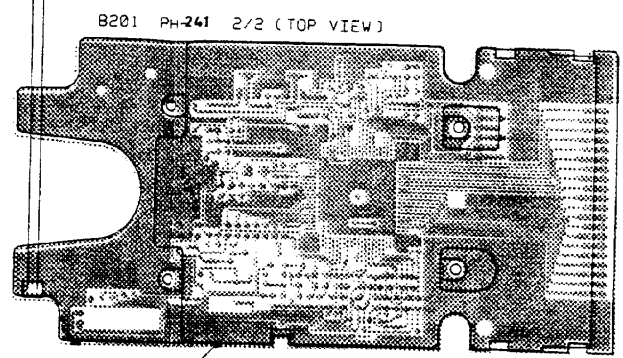
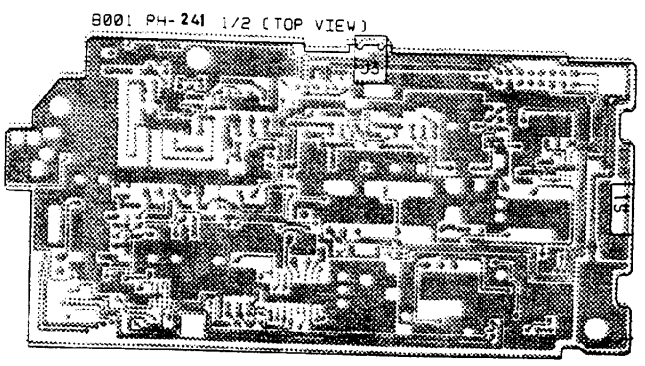


E33- 3827

UB- 257 ABC



SP501
SP-357



- PCB: B201
- REFLECTION SHEET
- LIGHTING PLATE
- LCD: DP201
- INSULATION PLATE
- CASE: LCD

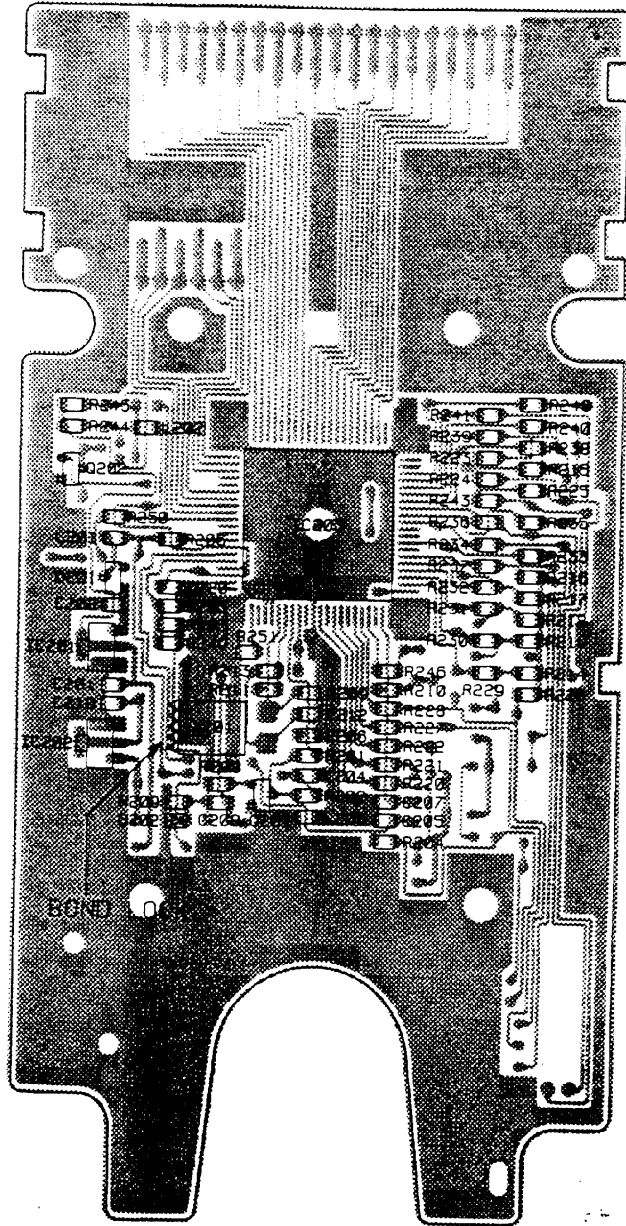
REVISIONS:					
REV	LOT #	DATE	REV	CHK	BY
0	INITIAL				
1	CMC	1996.8.14			Y. Hoshi
2	UBCO	1996.8.14			Y. Hoshi
3	UBCO	1996.8.14			Y. Hoshi
4	UBCO	1996.8.14			Y. Hoshi
5	UBCO	1996.8.14			Y. Hoshi
6	UBCO	1996.8.14			Y. Hoshi
7	UBCO	1996.8.14			Y. Hoshi
8	UBCO	1996.8.14			Y. Hoshi
9	UBCO	1996.8.14			Y. Hoshi
10	UBCO	1996.8.14			Y. Hoshi
11	UBCO	1996.8.14			Y. Hoshi
12	UBCO	1996.8.14			Y. Hoshi
13	UBCO	1996.8.14			Y. Hoshi
14	UBCO	1996.8.14			Y. Hoshi
15	UBCO	1996.8.14			Y. Hoshi
16	UBCO	1996.8.14			Y. Hoshi
17	UBCO	1996.8.14			Y. Hoshi
18	UBCO	1996.8.14			Y. Hoshi
19	UBCO	1996.8.14			Y. Hoshi
20	UBCO	1996.8.14			Y. Hoshi

UNIDEN PHILIPPINES INC.
CENTRALIZED DOCUMENT
CONTROL CENTER
MAR. 30. 1999
Date Issued
CIRCULATED COPY

UNIDEN CORP.
NEW
AUG 16, 1996
DRAWING
MADE COPY
AUG 20, 1996

DESIGN. BY	Y. HOSHI	UNIDEN NO.	UB-257A-B	MODEL NO.	COM212
DRWN. BY	Y. HOSHI	TITLE	WIRING DIAGRAM		
CHECK. BY	Y. HOSHI	DRAWING NO.	E33-3027		
REV. NO.		UNIDEN CORP.			

9201 PH-241 88 2/2
(TOP VIEW)



C201	0.1/B
C202	0.1/B
C204	0.001/B
C205	0.001/B
C206	0.001/B
C207	0.001/B
C208	0.022/B
C209	100P/CH
C210	0.01/B
C212	100P/CH
C220	0.1/B

D201	HSM88AS
D202	1SS355

IC201	RH5RL43AA
IC202	RH5VL27CA
IC203	UC1782

L201	LZ-120 600
L202	LZ-120 600
L203	LZ-120 600

Q201	2SC2712-Y
Q202	2SC2712-Y

X201	FK-029 800KHz
------	---------------

R201	10K
R202	100K
R203	22K-F
R204	10K
R205	22K-F
R206	10
R208	680K
R209	680K
R210	10K
R211	1M
R213	10K
R214	330K
R215	330K
R216	330K
R217	330K
R218	330K
R219	330K
R220	2.2K
R221	2.2K

R222	2.2K
R223	330K
R224	330K
R225	330K
R226	10K
R227	10K
R228	1K
R229	1K
R230	1K
R231	1K
R232	1K
R233	10K
R234	10K
R235	10K
R236	10K
R237	1K
R238	1K
R239	1K
R240	1K
R241	1K
R243	330K
R244	390
R245	390
R246	1K
R248	1K
R249	820K
R250	1.8K
R251	2.2K

REV. CODE	LOT # / R/NH	DATE	REV. BY	CHK. BY
10	ANML			Py
11	UNF	1989/1/4		Py
12	UBCD	1989/1/14		Py
13	UBCD	1989/1/14		Py
14	UBCD	1989/1/14		Py
15	UBCD	1989/1/14		Py
16	UBCD	1989/1/14		Py
17	UBCD	1989/1/14		Py
18	UBCD	1989/1/14		Py
19	UBCD	1989/1/14		Py
20	UBCD	1989/1/14		Py
21	UBCD	1989/1/14		Py
22	UBCD	1989/1/14		Py
23	UBCD	1989/1/14		Py
24	UBCD	1989/1/14		Py
25	UBCD	1989/1/14		Py
26	UBCD	1989/1/14		Py
27	UBCD	1989/1/14		Py
28	UBCD	1989/1/14		Py
29	UBCD	1989/1/14		Py
30	UBCD	1989/1/14		Py
31	UBCD	1989/1/14		Py
32	UBCD	1989/1/14		Py
33	UBCD	1989/1/14		Py
34	UBCD	1989/1/14		Py
35	UBCD	1989/1/14		Py
36	UBCD	1989/1/14		Py
37	UBCD	1989/1/14		Py
38	UBCD	1989/1/14		Py
39	UBCD	1989/1/14		Py
40	UBCD	1989/1/14		Py

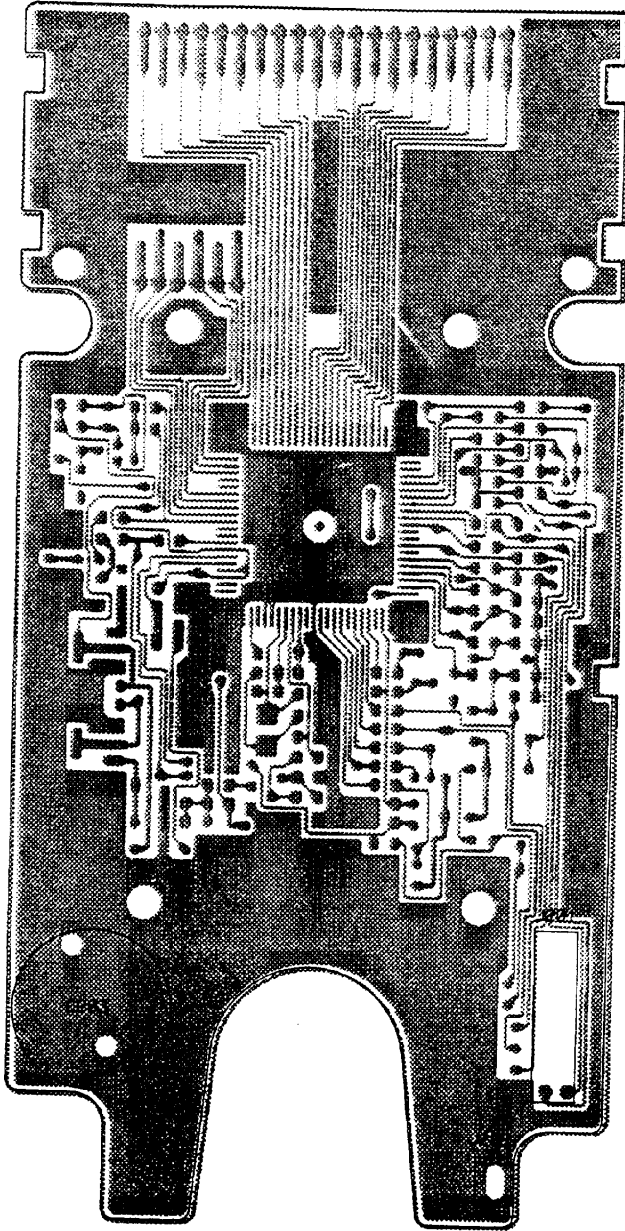
UNIDEN PHILIPPINES INC.
CENTRALIZED DOCUMENT CONTROL CENTER
AUG 30 1999
DATE ISSUED
CIRCULATED COPY

UNIDEN CORP.
NEW
AUG 16 1996
DRAWING

- NOTES:
1. RESISTANCE VALUES ARE SHOWN IN OHMS UNLESS OTHERWISE NOTED. (K=KILO OHM, M=MEG OHM)
 2. RESISTOR WATTAGES ARE 1/10W UNLESS OTHERWISE NOTED.
 3. CAPACITANCE VALUES ARE INDICATED IN MICRO FARADS UNLESS OTHERWISE NOTED. (P=MICRO-MICRO FARAD)
 4. ALL CAPACITORS SIZE ARE 2125 UNLESS OTHERWISE NOTED.

DESIGN BY	DRAWN BY	UNIDEN NO.	MODEL NO.
06.7.29	06.8.14	UB-237A	COM212
Y. HOSHI	Y. HOSHI	TITLE MICOM ASS'Y CHIP LAYOUT TOP VIEW	
CHECK. BY	APPRO. BY	DRAWING NO. E23-13386	
REV. NO.		UNIDEN CORP.	

9201 PH-241 B8 2/2
(TOP VIEW)



J201	PG-196 16P
J202	JK-775 2P
C203	5.5V 0.22F C-266

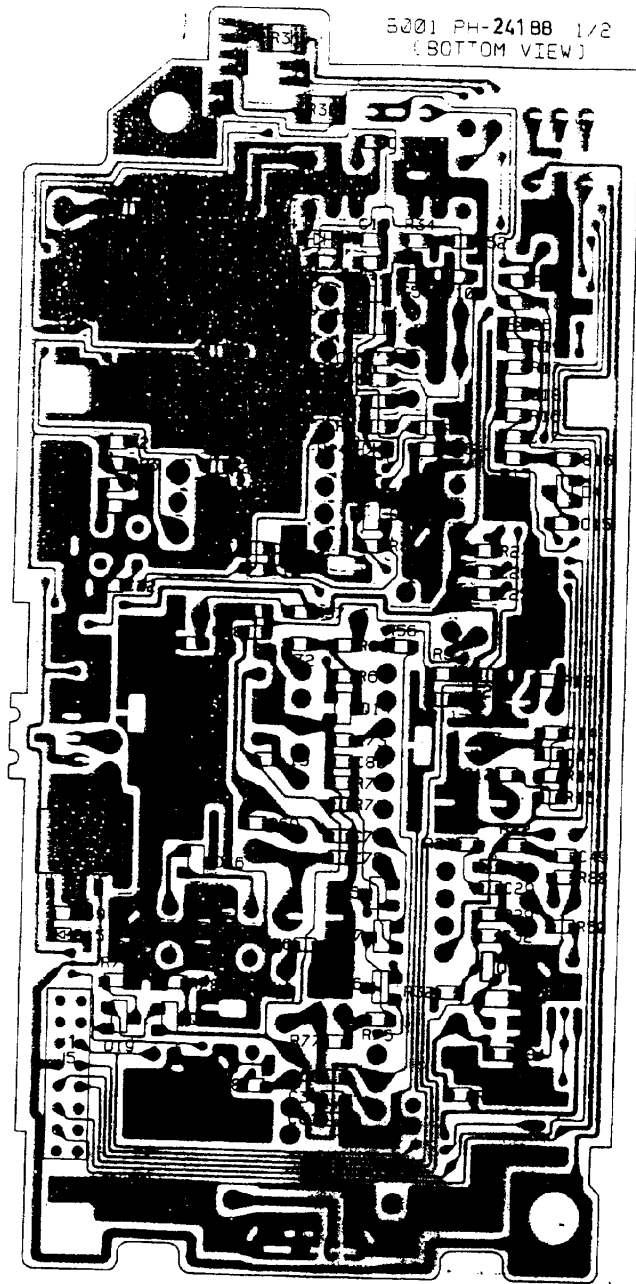
REVISIONS:					
REV	LOT #	DATE	REV	CHK	BY
INITIAL	IRNN	BY			
1	1/14/96	2007/1/14			Jy
2	05/3	2007/1/14			Jy
3	09/10/96	2007/1/14			Jy
4	09/10/96	2007/1/14			Jy
5	09/10/96	2007/1/14			Jy
6	09/10/96	2007/1/14			Jy
7	09/10/96	2007/1/14			Jy
8	09/10/96	2007/1/14			Jy
9	09/10/96	2007/1/14			Jy
10	09/10/96	2007/1/14			Jy
11	09/10/96	2007/1/14			Jy
12	09/10/96	2007/1/14			Jy
13	09/10/96	2007/1/14			Jy
14	09/10/96	2007/1/14			Jy
15	09/10/96	2007/1/14			Jy
16	09/10/96	2007/1/14			Jy
17	09/10/96	2007/1/14			Jy
18	09/10/96	2007/1/14			Jy
19	09/10/96	2007/1/14			Jy
20	09/10/96	2007/1/14			Jy

UNIDEN PHILIPPINES INC.
CENTRALIZED DOCUMENT
CONTROL CENTER
MAR 30 1999
Date Issued
CIRCULATED COPY

UNIDEN PHILIPPINES INC.
CENTRALIZED DOCUMENT
CONTROL CENTER
MASTER COPY
MAR 20 1996

UNIDEN CORP.
NEW
AUG 16 1996
DRAWING

DESIGN BY	DRAWN BY	UNIDEN NO.	MODEL NO.
06. 7. 29	06. 8. 14	UB-257A-BC	COM212
Y. HOSHI	Y. HOSHI	TITLE: MICOM ASS'Y	
CHECK BY	APPRO. BY	PARTS LAYOUT TOP VIEW	
		DRAWING NO.	
		E23-13385	
REV. NO.	UNIDEN CORP.		



5001 PH-24188 1/2
(BOTTOM VIEW)

C9	0.01/B
C10	68P/CH
C11	270P/CH
C12	0.01/B
C13	470P/CH
C14	470P/CH
C15	0.01/B
C16	0.0047/B
C17	0.1/B
C18	0.01/B
C19	18P/CH
C22	0.01/B
C23	0.1/B
C24	0.1/B
C25	0.1/B
C26	0.1/B
C29	3P/CJ
C31	0.0018/B
C32	0.001/B
C33	0.001/B
C34	1/F (3216)
C36	68P/CH
C49	0.1/B
C52	47P/CH
C54	0.001/B
C55	47P/CH
C56	0.001/B
C57	39P/CH
C68	39P/CH
C69	330P/CH
C72	0.001/B
C73	0.001/B
C74	18P/CH
C75	39P/CH
C80	10P/CH
C81	0.001/B
C105	0.001/B
C107	0.001/B

D4	HSM88AS
D5	1SS355
D6	1SV201-4
D13	KV1450
D14	1SV201-4
D15	DT29.1A
D16	DAN235K
D19	1SS184

L2	0.033UH LZ-0108
L15	0.56UH LZ-080

J5	PG-177 16P
----	------------

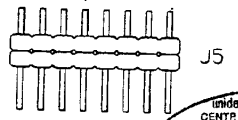
Q3	2SC2712-Y
Q5	DTC363EK T146
Q8	2SD1803-S
Q13	2SA1162-Y
Q14	2SC3121
Q15	2SC3121-T5L
Q16	2SA1162-Y
Q17	2SC3121-T5L

R4	33K
R6	220
R8	100K
R9	1.2K
R11	1.8K
R12	1.5K
R13	470K
R14	560K
R15	33K
R16	33K
R17	27K
R18	120K
R19	47K
R20	56K
R21	22K
R22	220
R24	22K
R27	1M
R29	22K
R30	10 1/4W
R31	8.2 1/4W
R32	22K
R33	33K
R34	33K
R35	2.7K
R38	1K
R42	2.2
R43	2.2
R46	33K
R47	100
R48	33K
R49	560
R50	68
R56	10K
R57	10
R66	2.2M
R67	100K
R68	100
R69	1K
R70	15K
R71	33K
R75	15K
R76	18K

R77	18K
R78	10K
R79	10K
R83	10K
R88	15K

REVISIONS:				
REV. CODE	LOT #	DATE	REV. BY	CHK. BY
0				
1				
2				
3				
4				
5				
6				
7				
8				
9				
10				
11				
12				
13				
14				
15				
16				
17				
18				
19				
20				
21				
22				
23				
24				
25				
26				
27				
28				
29				
30				
31				
32				
33				
34				
35				
36				
37				
38				
39				
40				

*1 J5 SHORTER LEGS SHOULD BE INSERTED TO PCB.



UNIDEN PHILIPPINES INC.
CENTRALIZED DOCUMENT
CONTROL CENTER
MAR. 30. 1999
Date Issued
CIRCULATED COPY

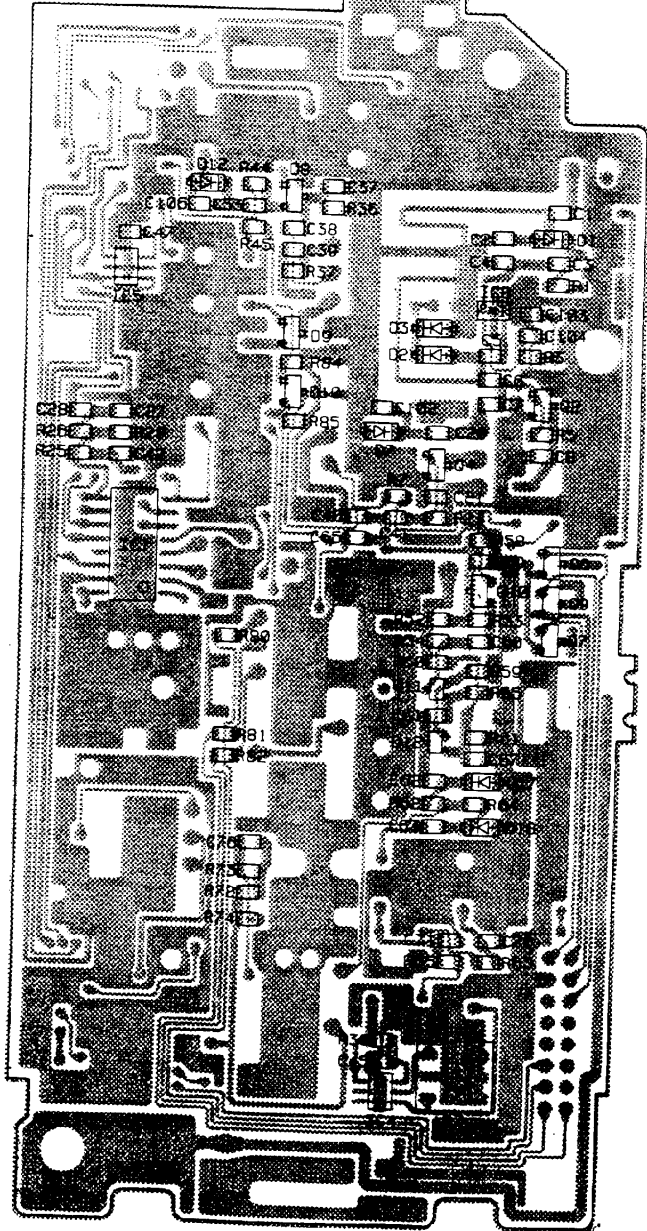
- NOTES:
1. RESISTANCE VALUES ARE SHOWN IN OHMS UNLESS OTHERWISE NOTED. (K-KILO OHM, M-MEG OHM) UNLESS OTHERWISE NOTED.
 2. RESISTOR WATTAGES ARE 1/10W UNLESS OTHERWISE NOTED.
 3. CAPACITANCE VALUES ARE INDICATED IN MICRO FARADS UNLESS OTHERWISE NOTED. (P-MICRO-MICRO FARAD)
 4. ALL CAPACITORS SIZE ARE 2125 UNLESS OTHERWISE NOTED.

MAINT COPY
AUG 26 1996
Date Received

NEW
AUG 16 1996
DRAWING
JAPAN

DESIGN. BY	DRAWN. BY	UNIDEN NO.	MODEL NO.
'96. 7. 29	'96. 8. 14	UB-257ABC	COM212
Y. HOSHI	Y. HOSHI	TITLE	MAIN ASS'Y PARTS LAYOUT/ CHIP LAYOUT BOTTOM VIEW
CHECK. BY	APPRO. BY	DRAWING NO.	E23-13384
REV. NO.			UNIDEN CORP.

3001 PH-241 98 1/2
(TOP VIEW)



C1	2P/CK
C2	2P/CK
C3	100P/CH
C4	22P/CH
C5	2P/CK
C6	5P/CH
C7	2P/CK
C8	15P/CH
C20	33P/CH
C21	0.001/B
C27	0.047/B
C28	0.1/B
C37	15P/CH
C38	0.001/B
C39	0.001/B
C40	33P/CH
C41	100P/CH
C42	0.1/B
C45	0.022/B
C47	0.1/B
C53	0.01/B
C59	0.0033/B
C60	0.001/B
C61	1.5P/LK
C62	33P/CH
C63	0.001/B
C65	47P/CH
C67	0.001/B
C70	0.001/B
C71	0.022/B
C76	10P/CH
C102	2P/CK
C103	0.001/B
C104	0.001/B
C106	1P/CK

D1	1SV188-9
D2	1SV188-9
D3	1SV201-4
D7	1SV188-9
D8	DAN235K
D9	DAN235K
D10	1SS184
D12	1SV201-4
D17	1SV201-4
D18	1SV201-4

IC1	MC3361CDR2
IC4	TK11817M
IC5	TK11238AM
IC8	LPC2748T

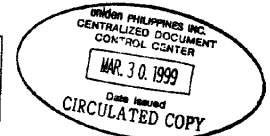
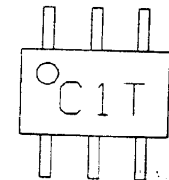
L7	LZ-077 1.2mH
----	--------------

Q2	2SC3356-R24
Q4	2SC3121
Q6	2SA1162-Y
Q7	2SA1162-Y
Q9	2SA1162-Y
Q10	2SC3121
Q11	2SC4246-T5L UNIDEN
Q12	2SC4246-T5L UNIDEN

R1	22K
R3	120
R5	330K
R7	100
R23	220K
R25	100K
R26	8.2K
R28	6.8K
R36	4.7K
R37	1K
R39	820
R44	1K
R45	100
R52	100
R53	33K
R54	330
R55	4.7K
R58	470
R59	560
R60	6.8K
R61	4.7K
R62	12K
R63	100
R64	1.8K
R65	100
R72	10K
R73	220K
R74	22K
R80	1K
R81	1K
R82	1K
R84	10K
R85	10K

REVISIONS:					
REV. NO.	LOT #	DATE	REV. BY	CHK. BY	
0	INITIAL				
1	1/10/98	10/29/98			
2	053	10/29/98			
3	059	04/02/99			
4	059	04/02/99			

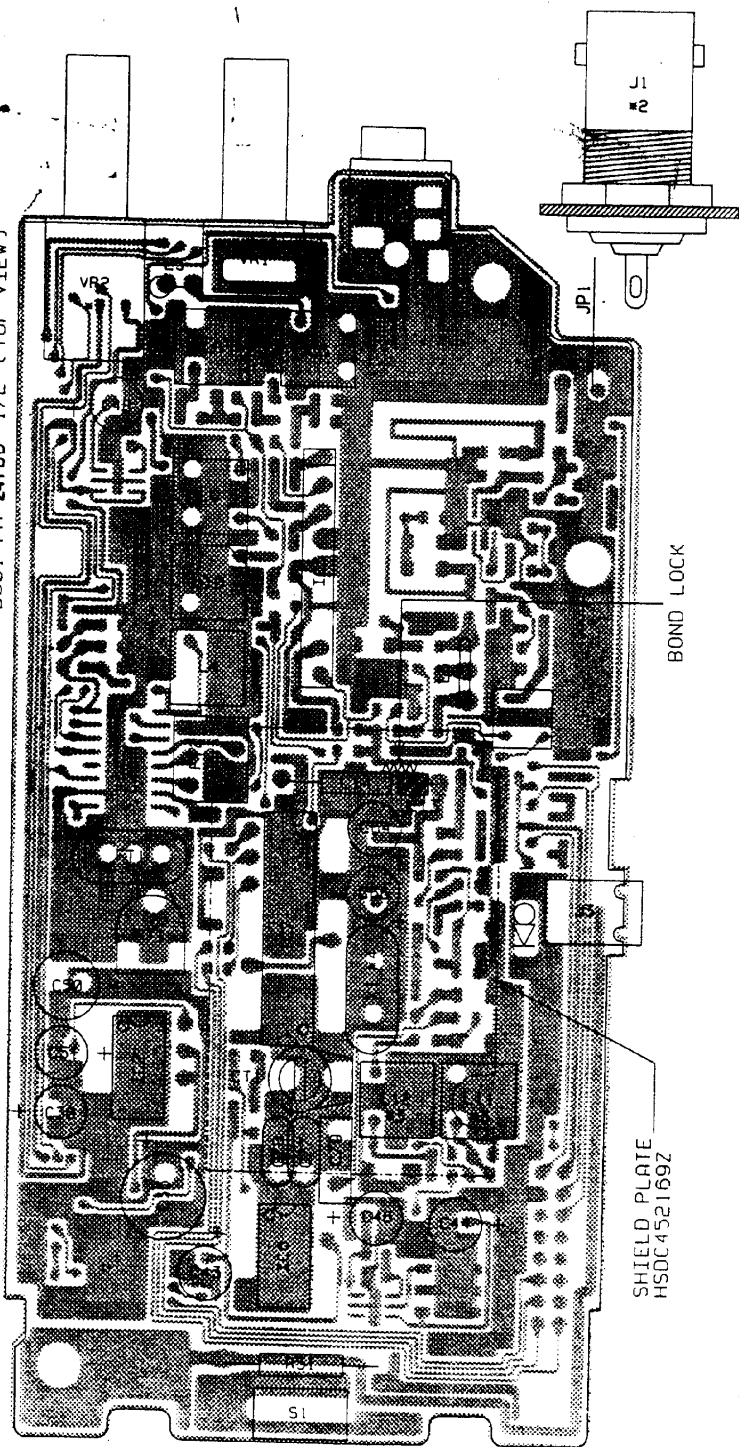
*1 IC8 PIN LOCATION



NOTES:

1. RESISTANCE VALUES ARE SHOWN IN OHMS UNLESS OTHERWISE NOTED. (K-KILO OHM, M-MEG OHM)
2. RESISTOR WATTAGES ARE 1/10W UNLESS OTHERWISE NOTED.
3. CAPACITANCE VALUES ARE INDICATED IN MICRO FARADS UNLESS OTHERWISE NOTED. (P-MICRO-MICRO FARAD)
4. ALL CAPACITORS SIZE ARE 2125 UNLESS OTHERWISE NOTED.

DESIGN BY	DRAWN BY	UNIDEN NO.	MODEL NO.
'98. 7. 29	'98. 8. 14	UB-257A0C	COM212
Y. HOSHI	Y. HOSHI	TITLE	MAIN ASS'Y
CHECK BY	APPRD BY	CHIP LAYOUT TOP VIEW	
		DRAWING NO.	E23-13383
REV. NO.		UNIDEN CORP.	



C30	50V 2.2 C-130
C35	10V 470 C-130
C43	50V 1 C-130
C44	50V 10 C-130
C46	50V 4.7 C-130
C48	10V 100 C-130
C50	25V 100 C-130
C51	10V 100 C-130
C64	10V 100 C-130
C66	10V 100 C-130
C77	50V 0.0047(P) C-114
C78	50V 0.0047(P) C-114
C79	63V 0.1(P) C-184

CT1	CT-082 50PF
-----	-------------

D11	1N4003
-----	--------

FT1	FL-195
FT2	FL-200

IC2	TBA820M
IC3	LA1186N
IC6	TLC271CP
IC7	SM5158AP

J1	JK-661
J2	JK-831
J3	JK-285

L1	LF-207
L3	LE-366 1/2T
L4	LB-233
L5	0.27UH LZ-041
L6	LB-797
L8	LB-659
L9	LB-658
L10	LC-226
L11	LB-568
L12	LB-657
L13	LD-087
L14	0.22UH LZ-041

R51	39 1WS
RT1	RT-572 3KB

S1	SW-465
----	--------

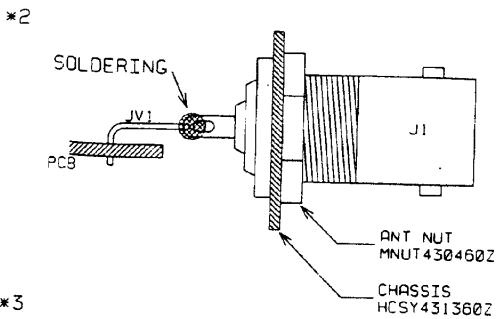
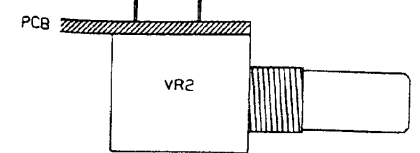
VR1	RV-717 100KA
VR2	RV-744 100KA

X1	QX-145 10.400MHZ
----	------------------

JP1	12.5mm
-----	--------

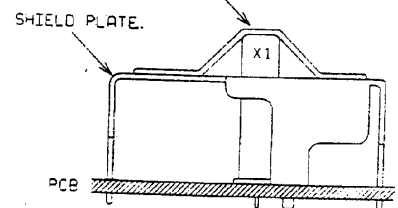
REVISIONS				
NO.	LOT #	DATE	REV	CHK
DATE	BY	BY		
0			INITIAL ISSUE	
1			OKS	
2			USED - OFF	
3			PD 7/28/88	
4			PD 8/1/88	
5			PD 8/1/88	

*1 CUT HERE (MAX. 1.0MM)
(2 LEADS ONLY)



*3 L11, L12 NEED PARAFFIN LOCK.

*4 ACETATE TAPE (APPROX. 10 x 35mm)



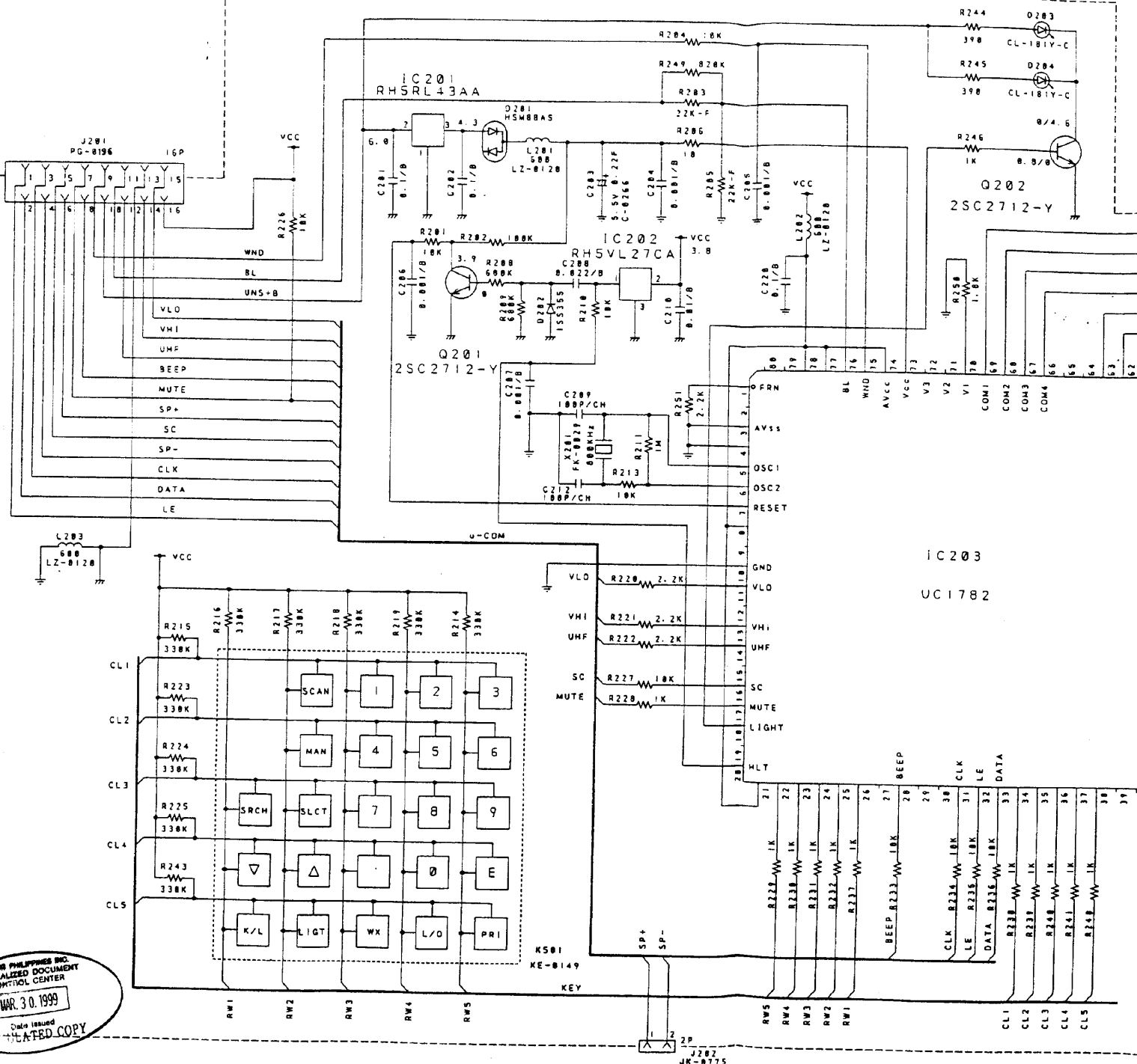
- NOTES:
1. RESISTANCE VALUES ARE SHOWN IN OHMS UNLESS OTHERWISE NOTED. (K-KILO OHM, M-MEG OHM)
 2. RESISTOR WATTAGES ARE 1/10W UNLESS OTHERWISE NOTED.
 3. CAPACITANCE VALUES ARE INDICATED IN MICRO FARADS UNLESS OTHERWISE NOTED. (P-MICRO-MICRO FARAD)

UNION PHILIPPINES INC.
CENTRALIZED DOCUMENT
CONTROL CENTER

MAR. 3 0. 1999

Date Issued
CIRCULATED COPY

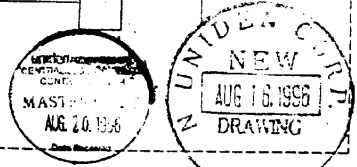
DESIGN. BY	DRAWN. BY	UNIDEN NO.	MODEL NO.
'96. 7. 29	'95. 8. 14	UB-25TABC	COM21E
Y. HOSHI	Y. HOSHI	TITLE	MAIN ASS'Y
CHECK. BY	APPRO. BY	PARTS LAYOUT TOP VIEW	
		DRAWING NO.	E23-13382
REV. NO.		UNIDEN CORP.	



- NOTES:
1. RESISTANCE VALUES ARE SHOWN IN OHMS UNLESS OTHERWISE NOTED. (K=KILO OHM, M=MEG OHM)
 2. RESISTOR WATTAGES ARE [1/10W] UNLESS OTHERWISE NOTED.
 3. CAPACITANCE VALUES ARE INDICATED IN MICRO FARADS UNLESS OTHERWISE NOTED. (P=MICRO-MICRO FARAD)
 4. VOLTAGE IN NO MARK SHOWS VHI HIGH BAND CONDITION.
 5. VOLTAGE IN / SHOWS LIGHT ON/OFF CONDITION.

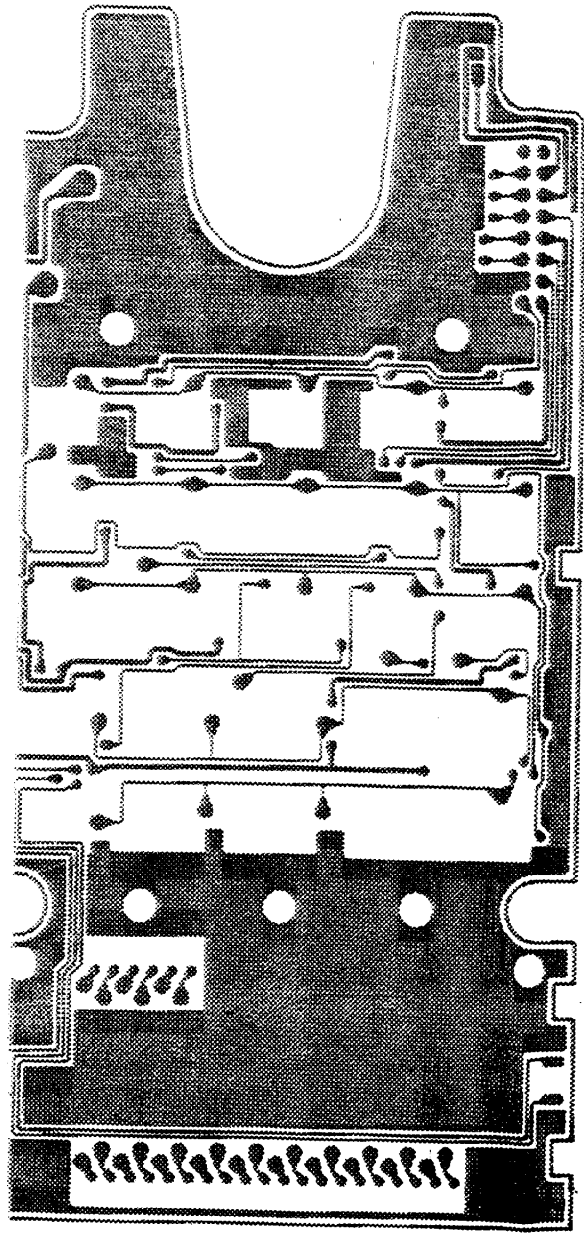
REVISIONS:

REV	LOT#	DATE	REV	CHK
0	INITIAL	ISSUE	DATE	BY
1	DESIGN	1986		
2	DESIGN	1986		
3	DESIGN	1986		
4	DESIGN	1986		

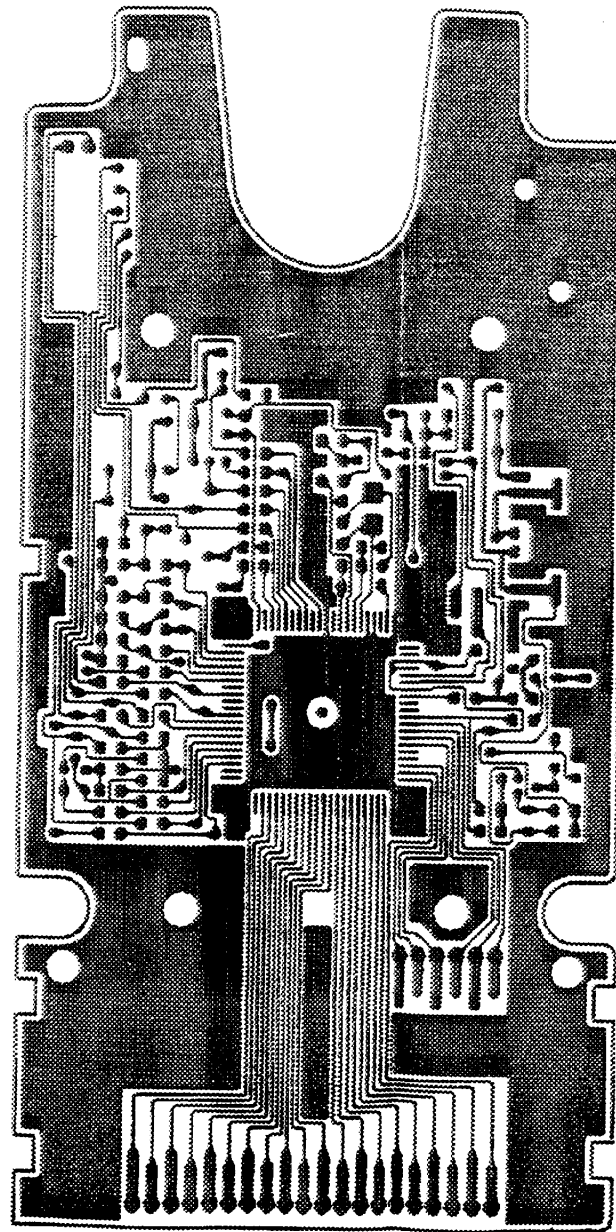


DESIGN	96. 6. 12	Y. HOSHI	Y. HOSHI	UNIDEN No.	UB-257A	MODEL No.	COM212
CHECK BY	APPRO. BY	TITLE		MICCOM PCB SCHEMATIC DIAGRAM			
DRAWING No.		E13-4815					
REV. No.				UNIDEN CORP.			

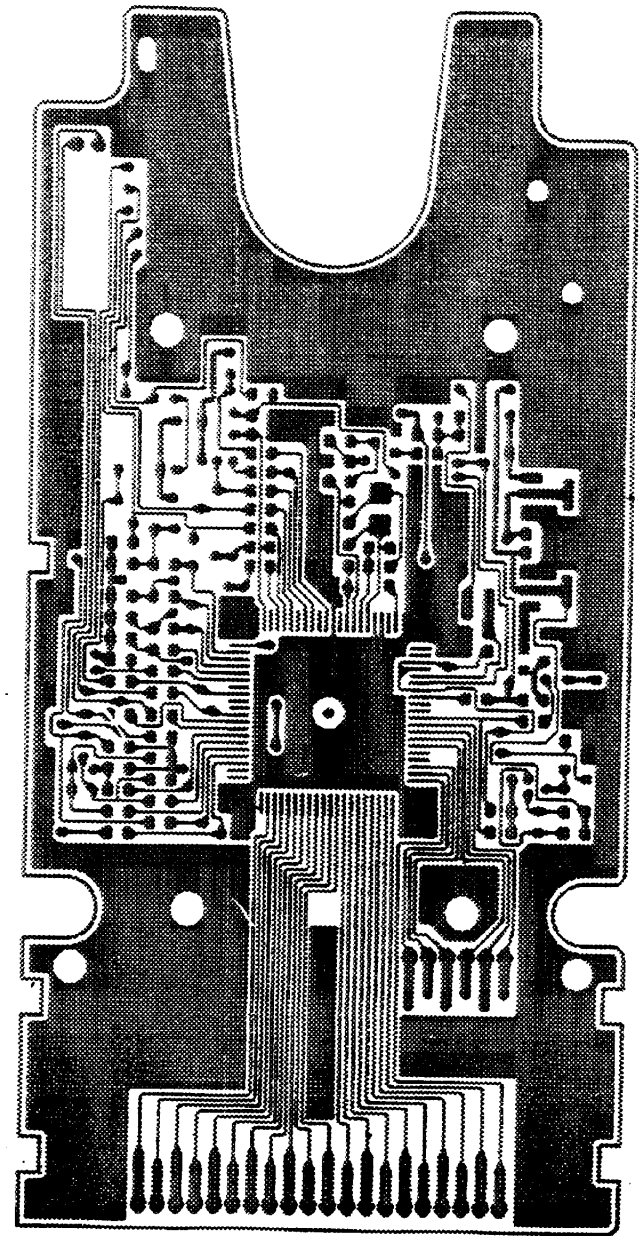
UNIDEN PHILIPPINES INC. CENTRALIZED DOCUMENT CONTROL CENTER
 Date Issued: MAR. 30. 1999
 RELATED COPY



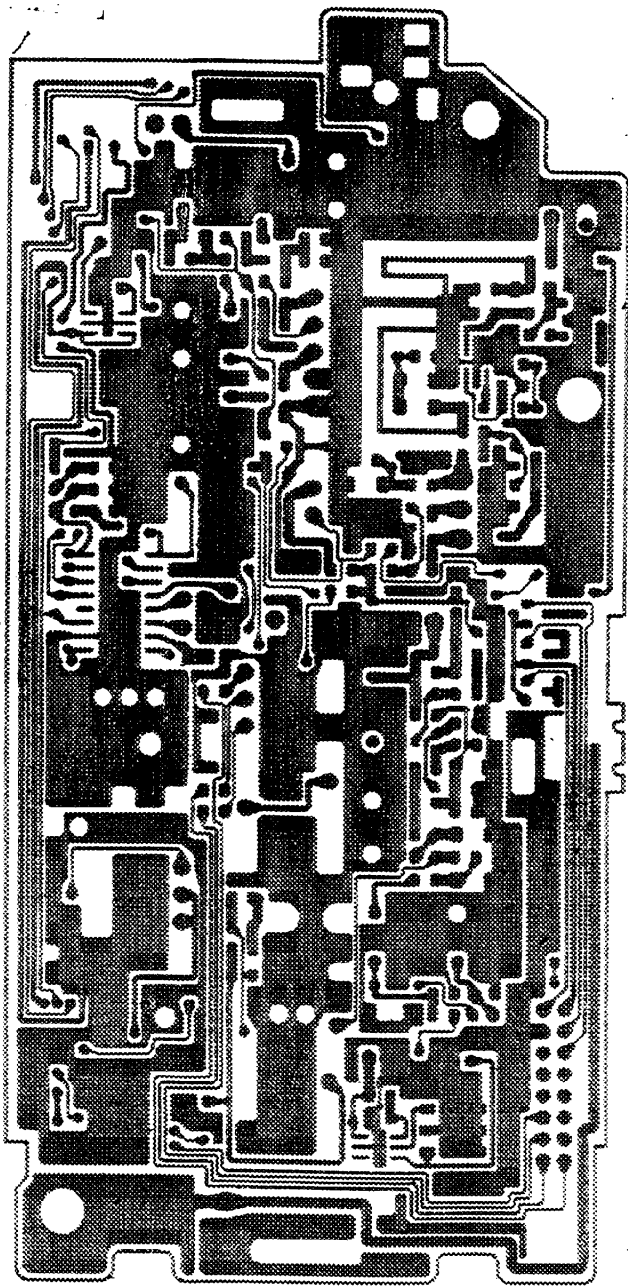
E23-13307



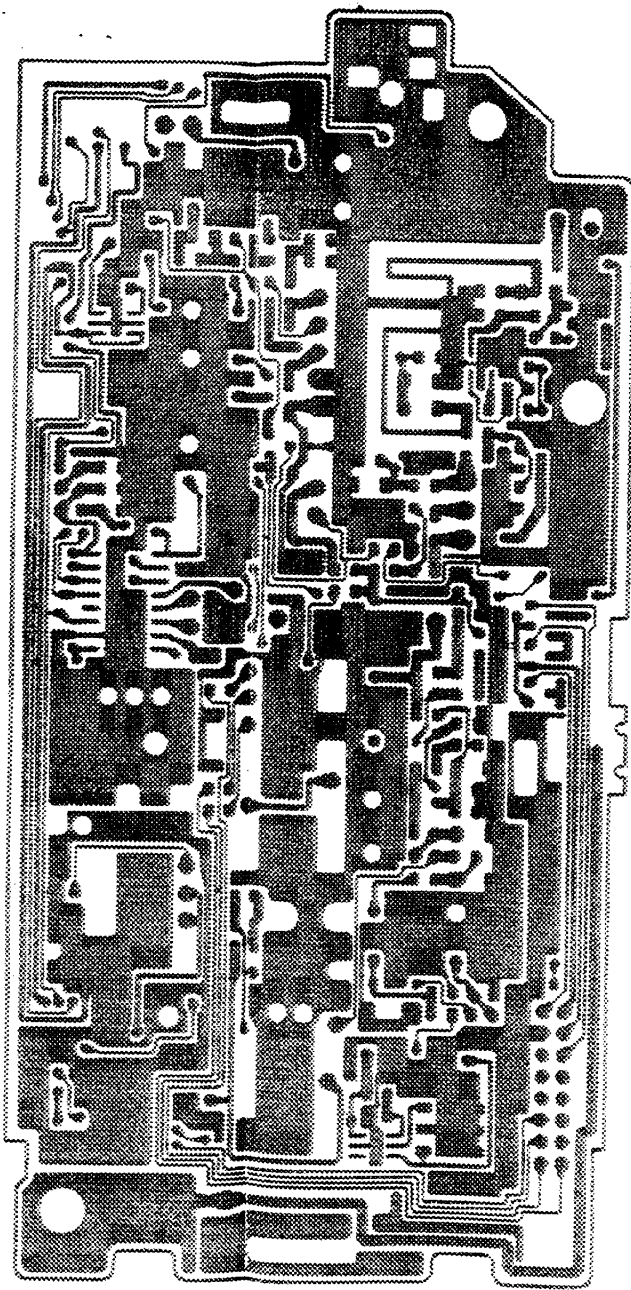
E23-13306



E23-13305

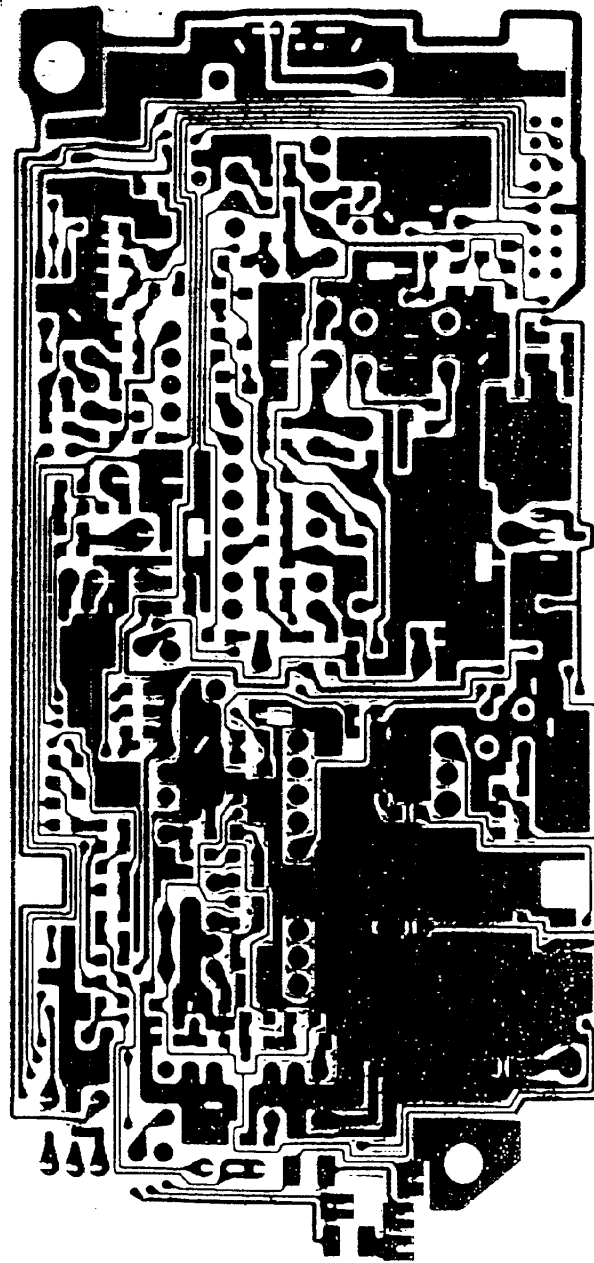


E23-13302



E23-13303

VB-257 ABC



E23-13304