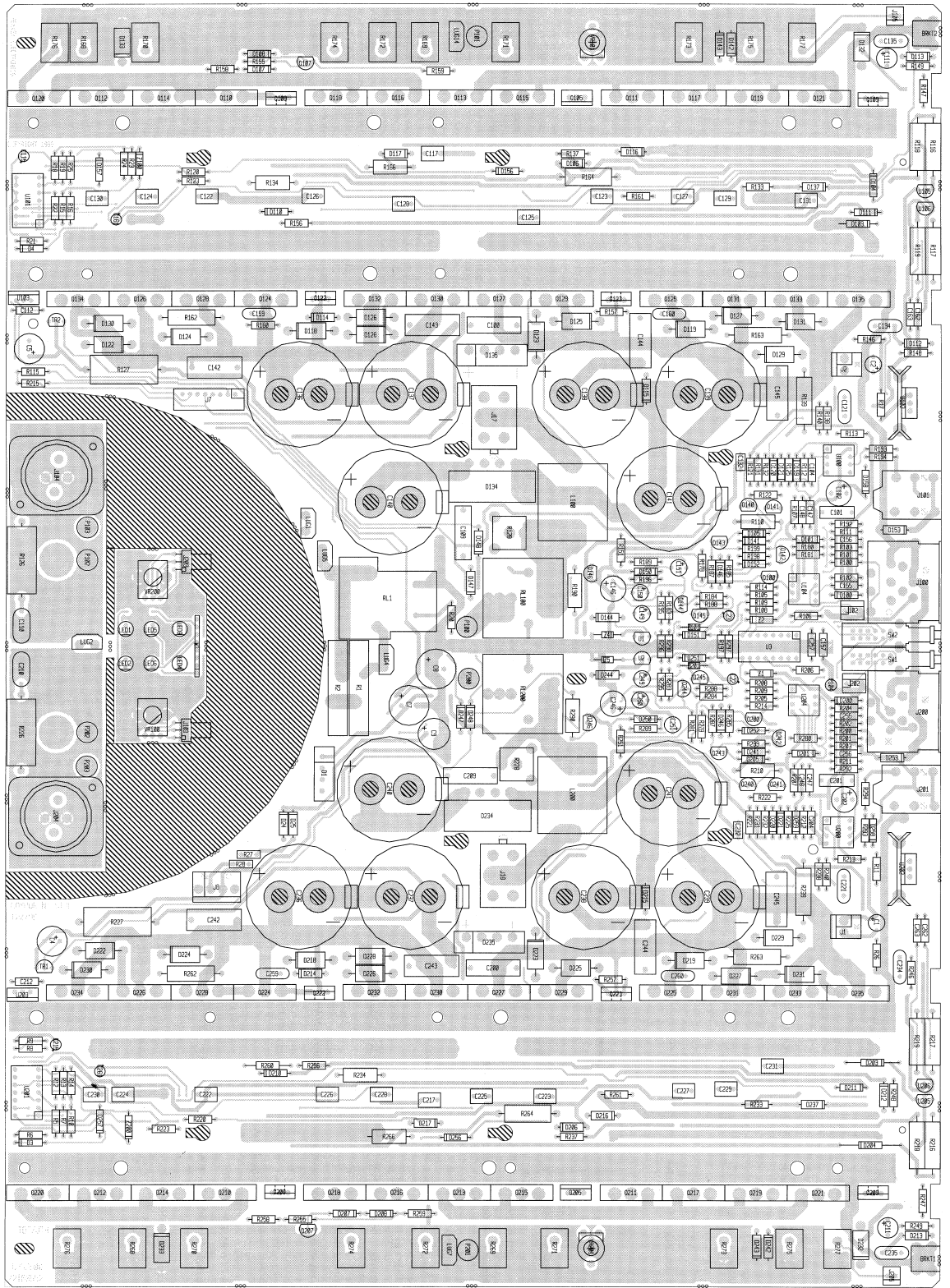


LAYER 1 COMPONENT SIDE



GPS3500 POWER

P104

1 WTCNN8 73716717 73716717 8 COND. WIRE TRAP CONN. .098" SPACING

J7

DI18, DI19, DI22, DI23, DI24, DI25,
DI26, DI27, DI28, DI29, DI30, DI31,
D218, D219, D222, D223, D224, D225,
D226, D227, D228, D229, D230, D231

1 NE5517AN NE5517AN 70405517 DUAL OTA

U3

2 PC6PIN 73714951 73714951 6 PIN POWER CONNECTOR

J17, J18

2 POT806 71190806 71190806 2KB--STD--9MM--D SHAFT

VR100, VR200

2 RALEDGN1 RALEDGN1 70450035 SLR34VR3 GP GREEN LED T1

LED1, LED2

2 RALEDYL1 RALEDYL1 70450036 LED YELLOW T1 (SMALL ROUND)

LED5, LED6

2 RASLG223 71466223 71466223 jack stereo r/a 1/4" 6.5mm

J101, J201

1 REL24V REL24V 71322388 24VDC SPST 30 AMP RELAY

RL1

2 REL24VF7 REL24VF7 71322387 SPST 70A, 24V RELAY

RL100, RL200

2 RUE185 RUE185 70400185 1.85 AMP, 3.7 AMP TRIP POLY SWITCH T&A

R27, R28

2 SDB4006 70404006 70404006 40A, 600V INLINE BRIDGE RECTIFIER

D134, D234

2 SG328 SG328 70250123 1 OHM, 30A THERMISTOR

RL, R2

2 SJE2153V SJE2153V 70402153 80V-3A-TO220 PNP DARLINGTON

Q105, Q205

6 SPD 73716194 73716194 250 FC MNT SPADE .093 PCB

LUG1, LUG2, LUG4, LUG5, LUG7, LUG14

2 SW2342 SW2342 71322342 SWITCH, 4PDT P/P R/A MINI

SW1, SW2

8 WJ10 WJ10 73713820 WR--TO-BD. CRIMP TERM - 10GA.

P100, P101, P102, P103, P200, P201,
P202, P203

1 WR8BK4SP WR8BK4SP 91090271 BK-18G-4"-CPT-250SPD/RA

BOARD NAME: GPS3300
PART DESCRIPTION AND

** QTY NAME VALUE NUMBER DEVICE DESIGNATIONS *****

QTY	NAME	VALUE	NUMBER	DEVICE	DESIGNATIONS
2	.0012M	.0012M	70330131	.0012M 5% 50vdc my	T&A
4	.01CD	.01CD	70320248	.01MF-----20%-----1000VDC---CD--T&A	
10	.1	.1	70340100	.1MF-----+80-20%-----50VDC---AXL---T&R	
22	.12M	.12M	70330133	.12M 5% 50vdc my	T&A
2	.1POLY	.1POLY	70330103	.1 MFD 200V POLY CAP	
4	.1R250C	.1R250C	70330307	.1 MFD 250V CAP RADIAL	
20	.33W7UP	.33W7	70250163	.33-7W-5%-WW-STANDUP	
4	OR	OR	70240148	0 ohm---1/4W---T&R	
2	1.0SF63	1.0SF63	70330275	1 MFD 10% 63 VDC SF R/W	
2	1.5KW1	1.5KW1	70210007	1.5K-1W-5%---MO--T&R	
7	100	100	70240010	100---1/4W-5%---CF--T&R	
2	1000R35	1000R35	70320186	1000MF-----20%-----35VDC--EL--T&A	
2	1000R63	1000R63	70320306	1000MF---63V-20%---EL--T&A	
10	100KPI	100KPI	70240151	100K-1/4W-1%---MF--T&R	
2	100R16	100R16	70320265	.100MF-20%-16V-EL-T&A	
1	100R63	100R63	70320264	100MF-----20%-----63VDC--EL--T&A	
18	10K	10K	70240025	10K---1/4W-5%---CF--T&R	
4	10KPI	10KPI	70241110	10K---1/4W-1%---MF--T&R	
2	10KPI	10KPI	70241050	10K---1/4W-1%---MF--T&R	
4	10PF	10PF	70340050	10PF-----5%-----TC---T&R	
2	10R50L	10R50L	70320185	10MF-----20%-----50VDC--EL--T&A	
4	10W2P2	10W2P2	70250083	10 OHM-2%-2W-MO-T&R	
2	12KWA3	12KWA3	70250098	12K-3W-5%---METAL OXIDE--T&R	
6	150M	150M	70330119	150PF 5% 500VDC ML R/W	
2	15W5	15W5	70241097	15-W-10%-WW--AXL	
6	1K	1K	70240017	1K---1/4W-5%---CF--T&R	
4	1KP1	1KP1	70241077	1K---1/4W-1%---CF--T&R	
28	1N4007	1N4007	70464007	1N4007 1KV, 1A, SILICON DIODE	
4	D24	D24	D24, D25, D106, D112, D113, D116, D117, D137, D142, D143, D144, D146, D147, D148, D153, D206, D212, D213, D216, D217, D237, D242, D243, D244, D246, D247, D248, D253		
28	1N4148	1N4148	70464148	1N4148 15V, 10MA SILICON DIODE	
2	1N747	1N747	70400747	1N747A 3.6V 5% ZENER T&R	
4	1N751A	1N751A	70400751	1N751A 5.1V, 4W, 5% ZENER DIODE	
2	1N853	1N853	70400823	6.2V TEMP COMP ZENER T&R	
2	1RBRKT	1RBRKT	70250164	1 OHM, 10W RES, W/BACKLET	
12	1SS142	1SS142	70400142	1ss142 250V SILICON DIODE	
22	2.2K	2.2K	70240020	2.2K-1/4W-5%---CF--T&R	
4	2.2R50	2.2R50	70320180	2.2MF-----20%-----50VDC--EL--T&A	
6	2.2T25	2.2T25	70340087	2.2 MF, 10%, 25VDC, TANTALUM T&A	
8	2.2U100P	2.2U100P	70320338	2.2UF-100V-POLY-RADIAL CAP	
2	2.7KW1	2.7KW1	70210016	2.7K-1W-5%---MO--T&R	
2	200TR1M	200TR1M	71190137	200 OHM TRIM POT	
5	20KPI	20KPI	70241116	20K-1/4W-1%---MF--T&R	
2	220	220	70240058	220---1/4W-5%---CF--T&R	
6	220K	220K	70240036	220K-1/4W-5%---CF--T&R	
4	22K	22K	70240029	22K---1/4W-5%---CF--T&R	
2	22R50	22R50	70330181	22MF-----20%-----50VDC--EL--T&A	
2	22R50	22R50	70330181	22MF-----20%-----50VDC--EL--T&A	

D257, D258, D259

Z1, Z2

Z4, Z5, Z101, Z201

Z100, Z200

R128, R238

D103, D104, D107, D108, D110, D111, D203, D204, D207, D208, D210, D211

R105, R114, R146, R147, R148, R149, R151, R156, R157, R183, R184, R205, R214, R246, R247, R248, R249, R251, R256, R257, R283, R284

C142, C143, C144, C145, C242, C243, C244, C245

R110, R210

VR101, VR201

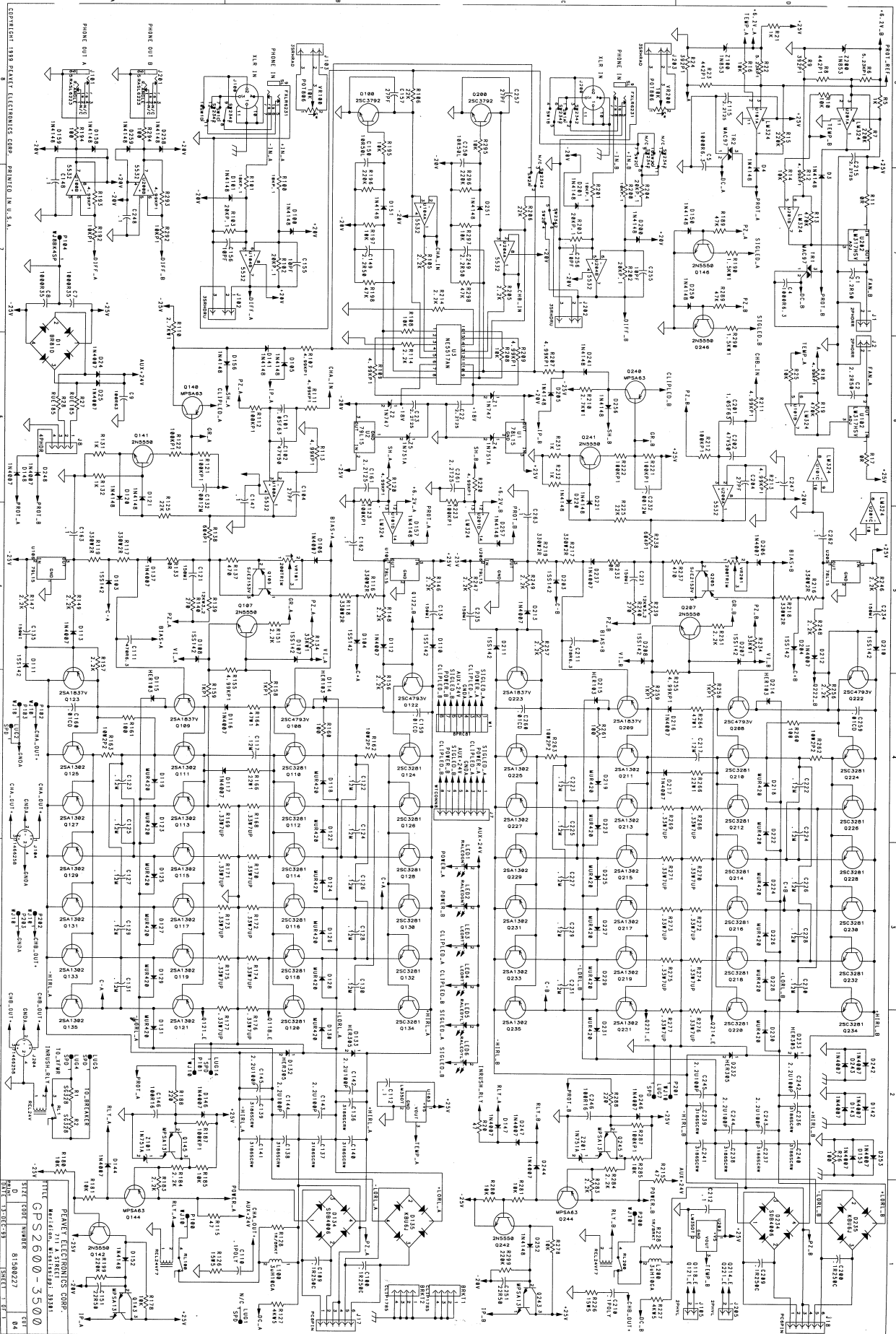
R102, R103, R202, R203, R204

R188, R288

R7, R15, R196, R199, R296, R299

R106, R125, R206, R225

C151, C251



CP5600-3500
 PRINTED IN U.S.A.
 STAR CORP. NUMBER 61590227