

● BLAUPUNKT

**Autoradio
Car Radio**

**München MP36
7 646 176 310**

CM-AS/SCS1 BE-ST 03/06

Schaltbild • Circuit diagram

**CLASS 1
LASER PRODUCT**



**UNSICHTBARE LASERSTRAHLUNG
NICHT DEM STRAHL AUSSETZEN**

(D) VORSICHT!

**Die Geräte beinhalten eine Laserkomponente!
Im Servicefall bitte nachfolgende Hinweise
beachten:**

- Das Gerät arbeitet mit unsichtbarem Laserstrahl.
- Bei geöffnetem Gerät tritt im Bereich des Plattenfaches Laserstrahlung aus.
- Nicht in den Strahl blicken.
- Unbeteiligte Personen vom Arbeitsplatz fernhalten.
- Der Betrachtungsabstand darf 13 cm nicht unterschreiten.
- Kann dies nicht eingehalten werden, muß eine geeignete Laserschutzbrille getragen werden.

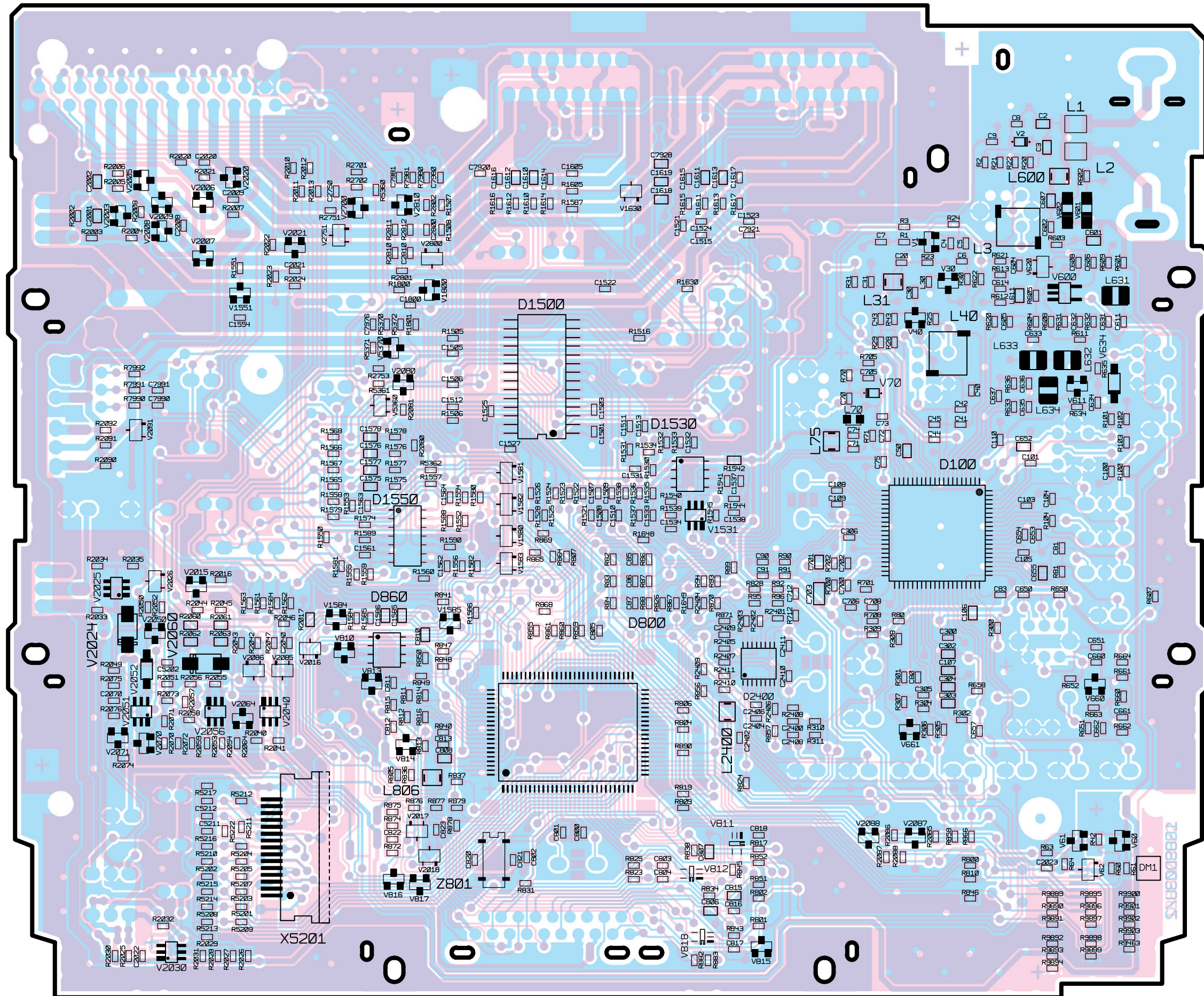
(GB) CAUTION!

**The CD units are equipped with a laser component!
For servicing make sure to observe the following
instructions:**

- The unit operates with invisible laser beams.
- When the cover is removed, invisible laser beams are emitted near the disc compartment.
- Avoid direct eye contact with these beams.
- Keep unauthorised persons away from the workbench.
- The viewing distance should not be less than 13 cm.
- If this distance cannot be kept, use suitable laser safety goggles.

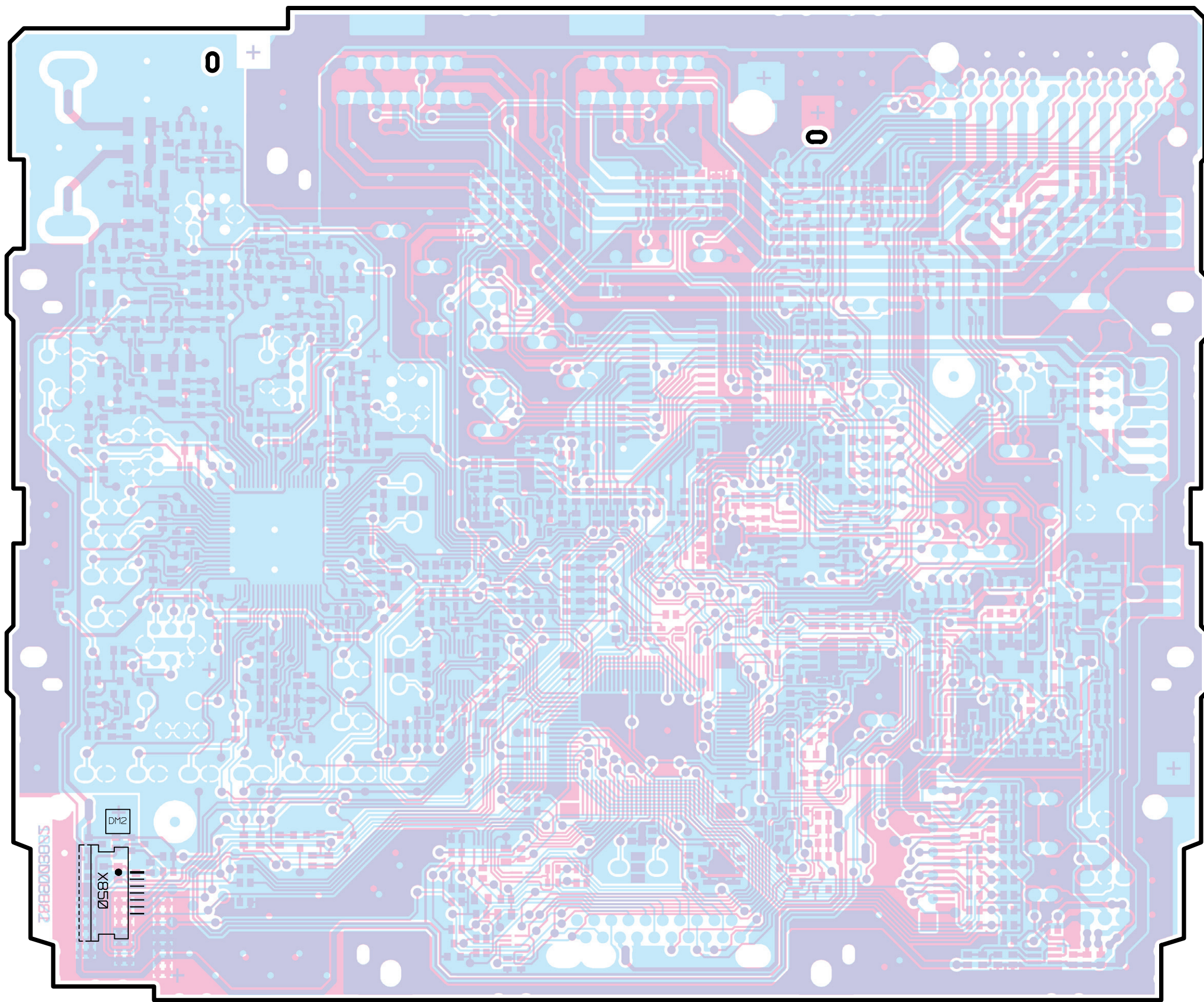


Hauptplatte
Main board
PL 8 638 211 889 D03
Chip

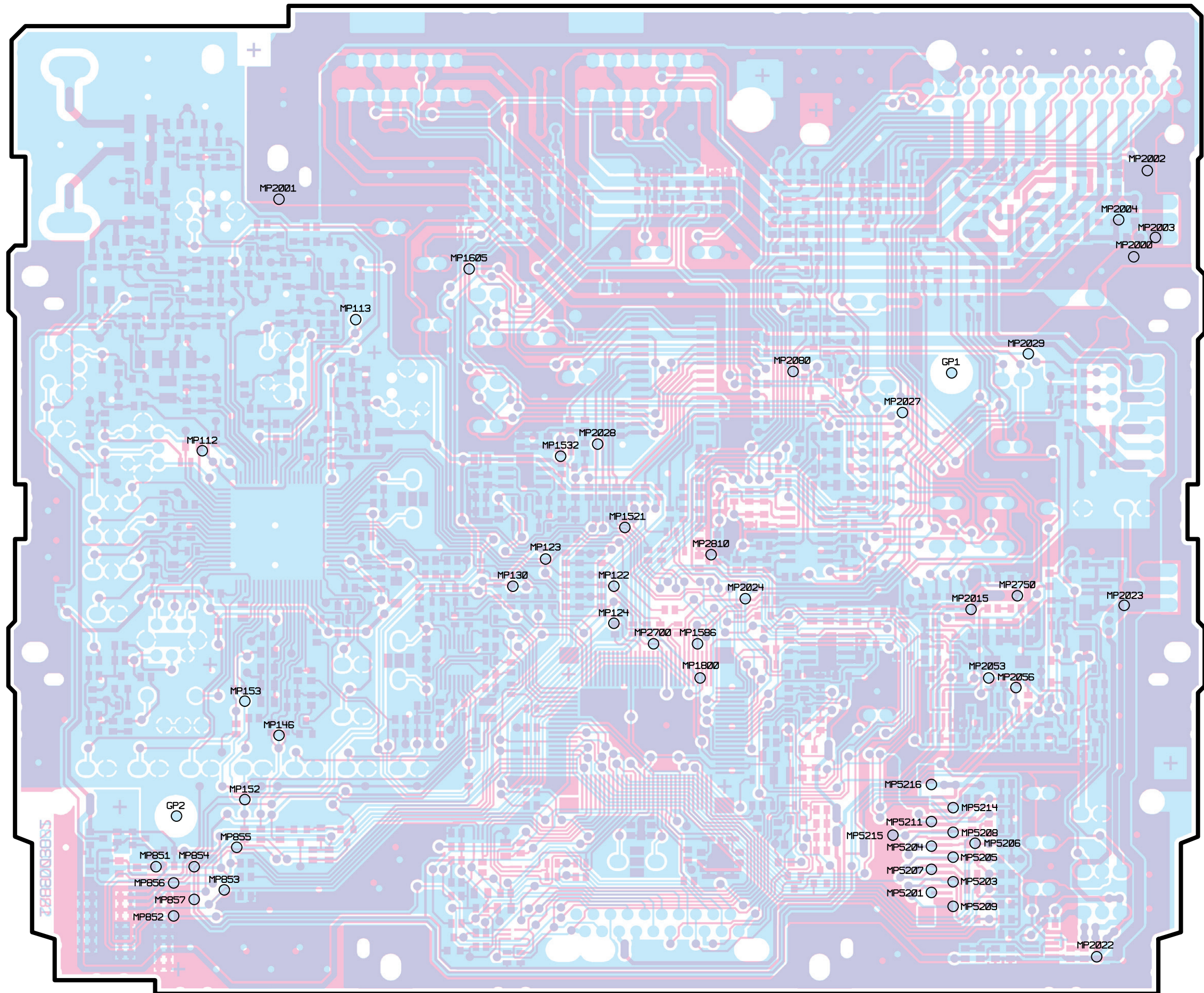


7982888Z

Hauptplatte
Main board
PL 8 638 211 889 D03
Chip
↑



Hauptplatte
Main board
PL 8 638 211 889 D03





Spannungsversorgung 12 – 14 Volt



Spannungsversorgung 6,5 – 10 Volt



Spannungsversorgung 5,0 – 6,0 Volt



Spannungsversorgung 1,2 – 3,5 Volt



Spannungsversorgung, permanent



Spannungsversorgung, geschaltet



IRQ, LVI Unterspannungserkennung



ZF - Signal, FM oder allgemein



CAN - BUS **RB / Robert - Bosch**



CAN - BUS **OEM**
Original - Equipment - Manufacturer



Data - BUS



SPI- BUS



Z - BUS / USB - BUS



SCI - BUS / I²C - BUS



RESET



I²S - BUS (Digital Audio)



Takt - Frequenz (Clock)



Schaltsignal (Impuls)



NF- Signal, (Audio)



HF - Signal, FM



HF - Signal, AGC



HF - Signal, AM



HF - Signal, AGC



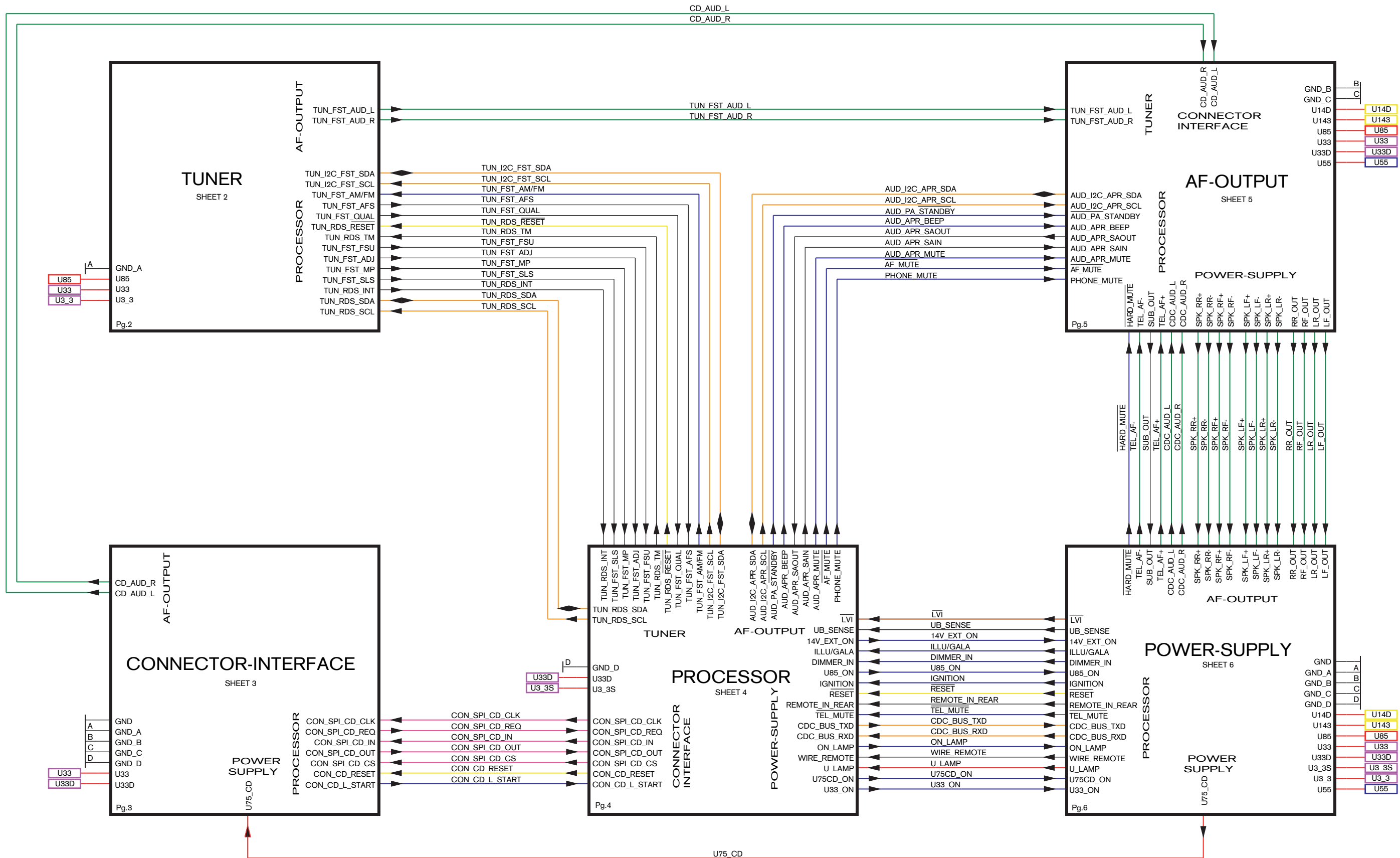
ZF - Signal, FM



ZF - Signal, AM



Adress - BUS

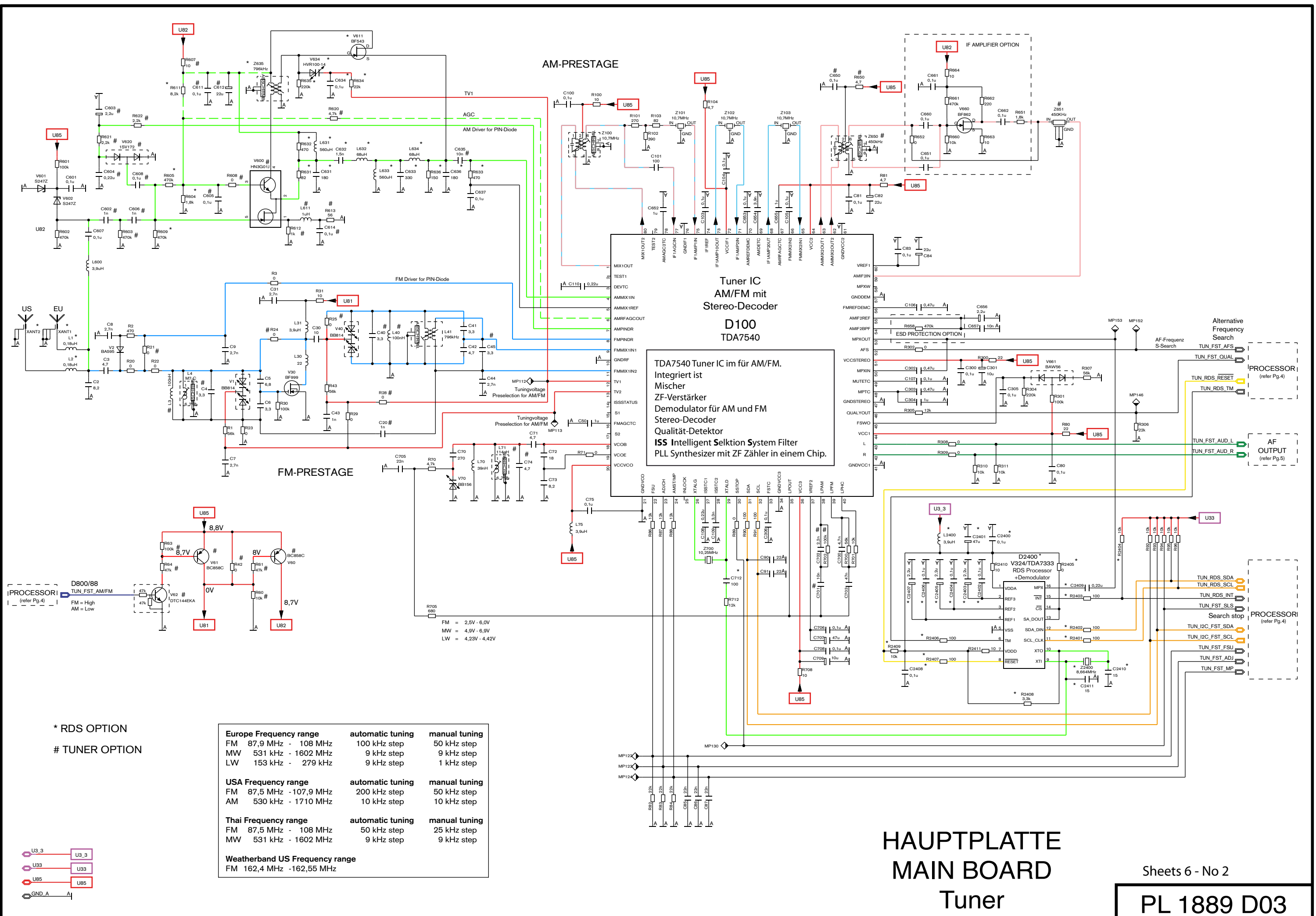


HAUPTPLATTE
 MAIN BOARD
 Blockschaltbild
 Block diagram

FEATURES		7 646 160 310	7 646 170 310	7 646 190 510	7 646 070 310	7 646 080 310	7 646 090 510	7 646 450 310	7 646 460 310	7 646 470 510	7 646 480 310	7 646 490 510	7 646 050 510	7 646 150 510	7 646 065 510	7 646 070 310	7 646 170 310	7 646 176 310	7 646 075 310	7 646 085 510	7 646 185 510
		8 638 201 889	8 638 201 890	8 638 201 891	8 638 201 892	8 638 201 893	8 638 201 894	8 638 201 895	8 638 201 896	8 638 201 897	8 638 201 898	8 638 201 899	8 638 201 900	8 638 201 900	8 638 201 901	8 638 201 902	8 638 201 903	8 638 201 903	8 638 201 903	8 638 201 903	8 638 202 463
		San Remo MP26 RDS	Milano MP26 RDS	Daytona MP26 NRDS	Santa Cruz MP36 RDS	Valencia MP36 RDS	Maui MP36 NRDS	Sevilla MP36 RDS	Alicante MP36 RDS	Key West MP36 NRDS	Orlando MP46 RDS	Bahamas MP46 NRDS	Kiel CD36 RDS	Essen MP36 RDS	Malaga CD36 RDS	Vancouver CD36 RDS	Calgary MP36 RDS	München MP36 RDS	Bristol CD36 RDS	Laguna CD36 NRDS	Bermuda MP36 NRDS
MODEL-INDICATOR	R9895	-	-	-	-	-	-	X	-	-	-	-	-	-	-	-	-	-	-	-	-
	R9896	-	-	-	-	-	-	-	X	-	-	-	-	-	-	-	-	-	-	-	-
	R9897	-	-	-	-	-	-	-	-	X	-	-	-	-	-	-	-	-	-	-	-
	R9898	-	-	-	-	-	-	-	-	-	X	-	-	-	-	-	-	-	-	-	-
	R9899	-	-	-	-	-	-	-	-	-	-	X	-	-	-	-	-	-	-	-	-
	R9900	-	-	-	-	-	-	-	-	-	-	-	X	X	-	-	-	-	-	-	-
	R9901	-	-	-	-	-	-	-	-	-	-	-	-	-	X	-	-	-	-	-	-
	R9902	-	-	-	-	-	-	-	-	-	-	-	-	-	-	X	-	-	-	-	-
	R9903	-	-	-	-	-	-	-	-	-	-	-	-	-	-	-	X	X	X	-	-
	R9463	-	-	-	-	-	-	-	-	-	-	-	-	-	-	-	-	-	-	-	X

" X " - INSERTED

" - " - NOT INSERTED

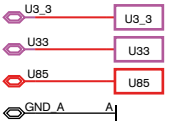


**Tuner IC
AM/FM mit
Stereo-Decoder
D100
TDA7540**

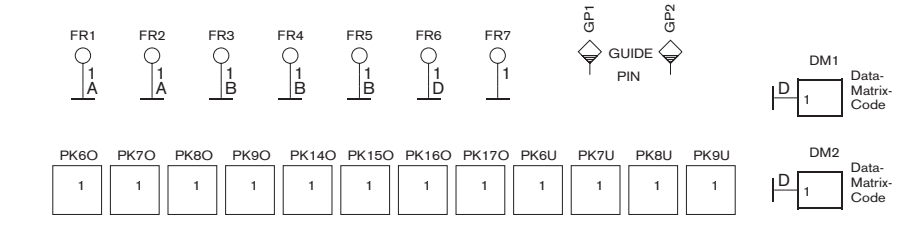
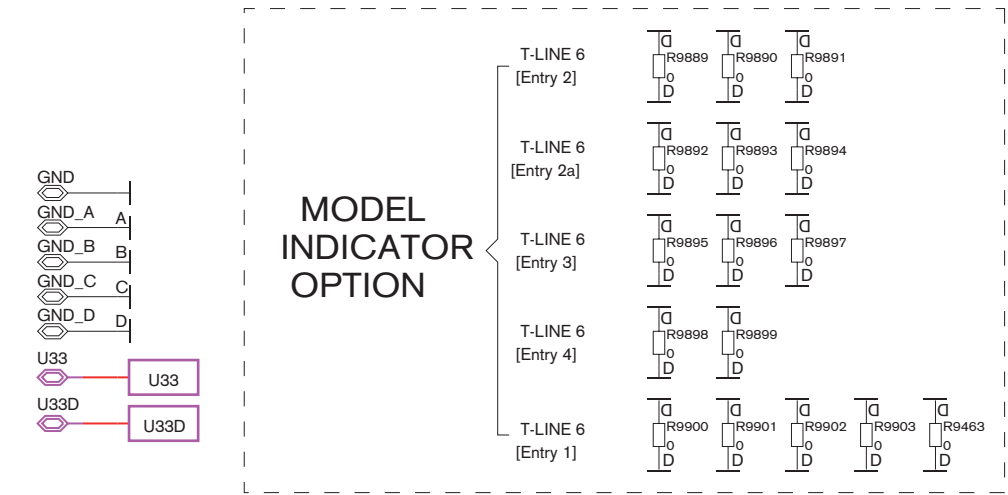
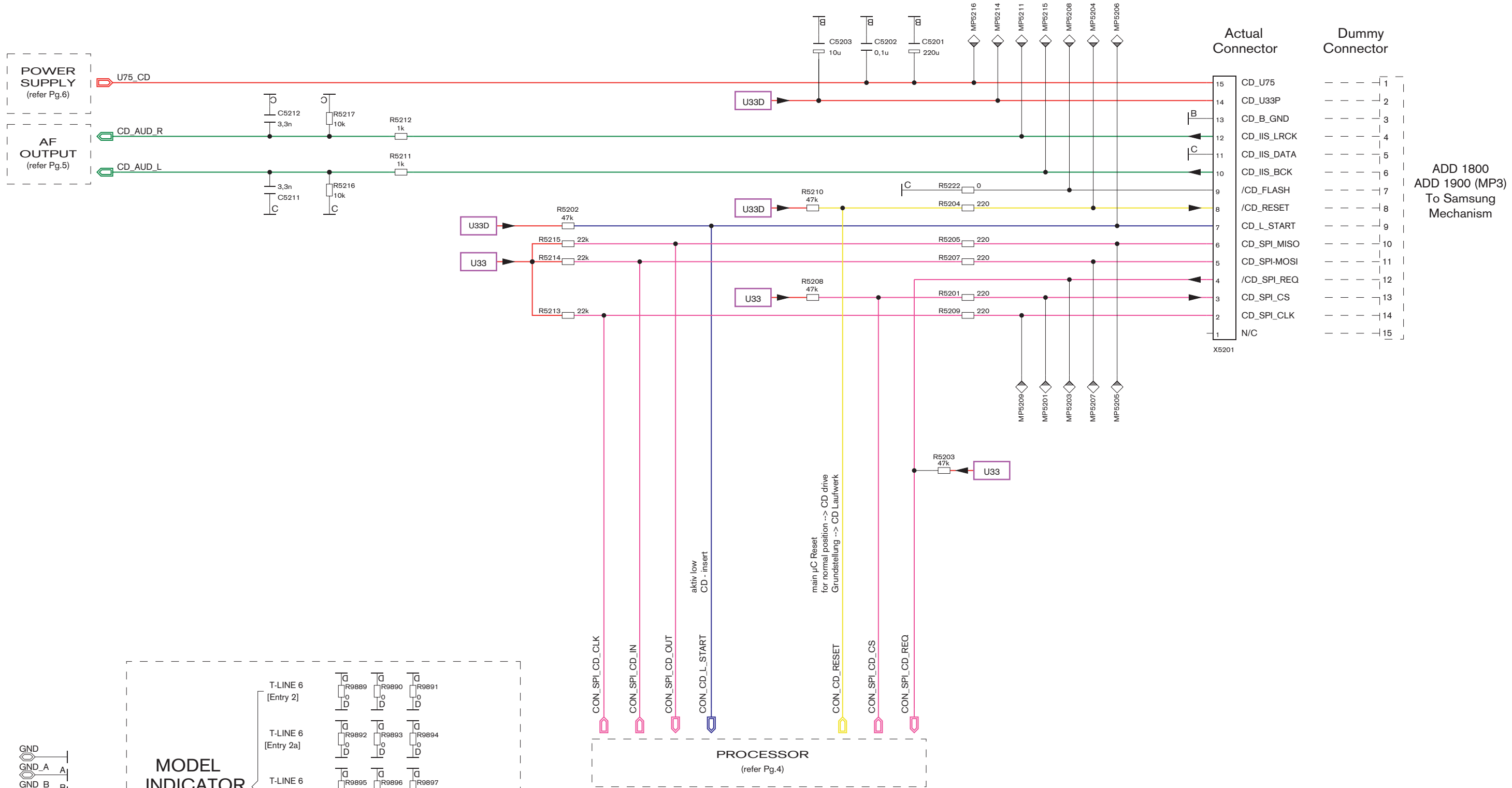
TDA7540 Tuner IC im für AM/FM.
Integriert ist
Mischer
ZF-Verstärker
Demodulator für AM und FM
Stereo-Decoder
Qualität-Detektor
ISS Intelligent Selktion System Filter
PLL Synthesizer mit ZF Zähler in einem Chip.

* RDS OPTION
TUNER OPTION

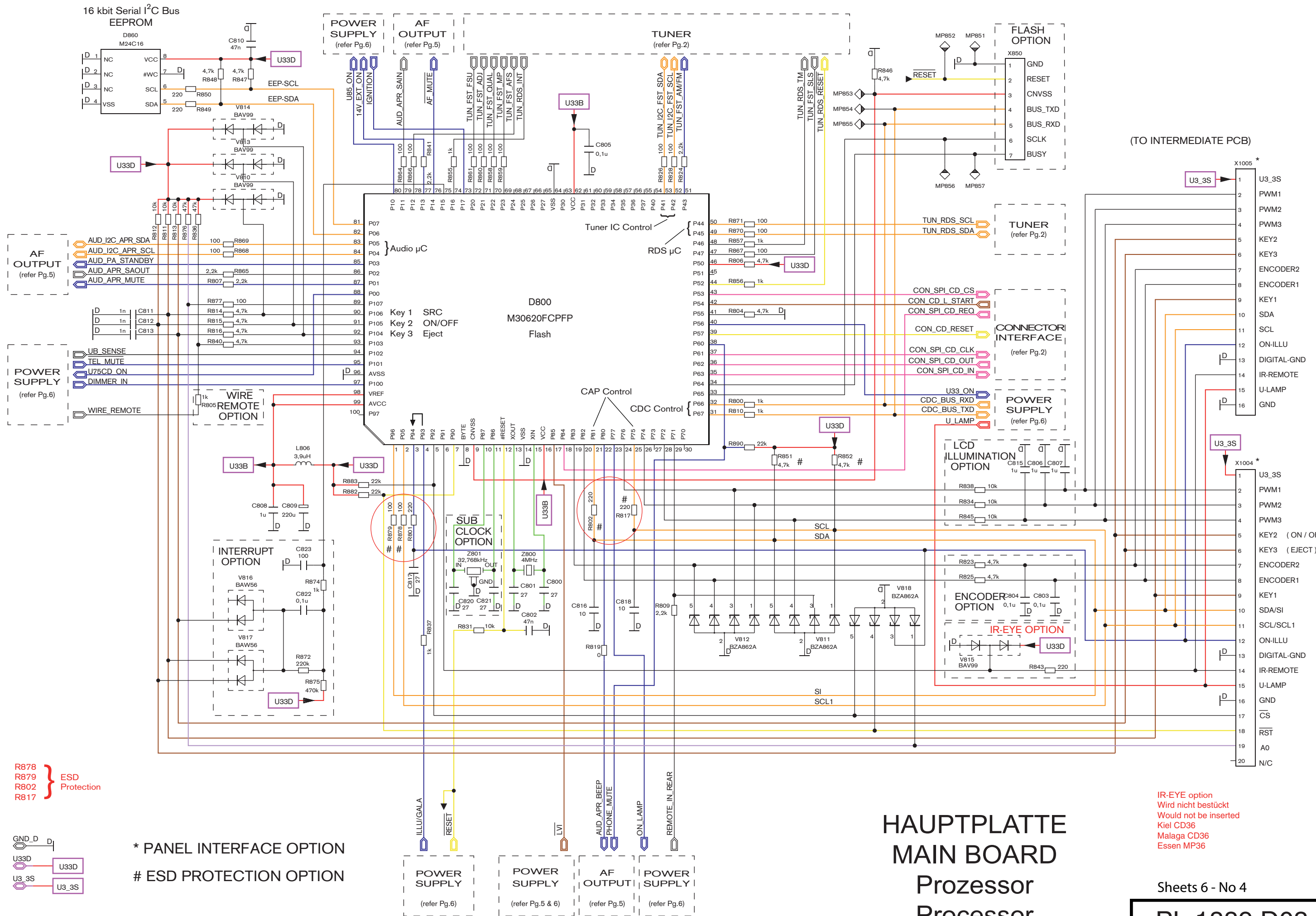
Frequency range	automatic tuning	manual tuning
Europe Frequency range		
FM 87,9 MHz - 108 MHz	100 kHz step	50 kHz step
MW 531 kHz - 1602 MHz	9 kHz step	9 kHz step
LW 153 kHz - 279 kHz	9 kHz step	1 kHz step
USA Frequency range		
FM 87,5 MHz - 107,9 MHz	200 kHz step	50 kHz step
AM 530 kHz - 1710 MHz	10 kHz step	10 kHz step
Thai Frequency range		
FM 87,5 MHz - 108 MHz	50 kHz step	25 kHz step
MW 531 kHz - 1602 MHz	9 kHz step	9 kHz step
Weatherband US Frequency range		
FM 162,4 MHz - 162,55 MHz		



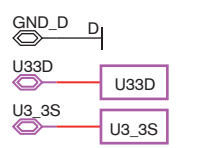
HAUPTPLATTE MAIN BOARD Tuner



HAUPTPLATTE
MAIN BOARD
Schnittstelle
Interface



R878 } ESD
 R879 } Protection
 R802 }
 R817 }



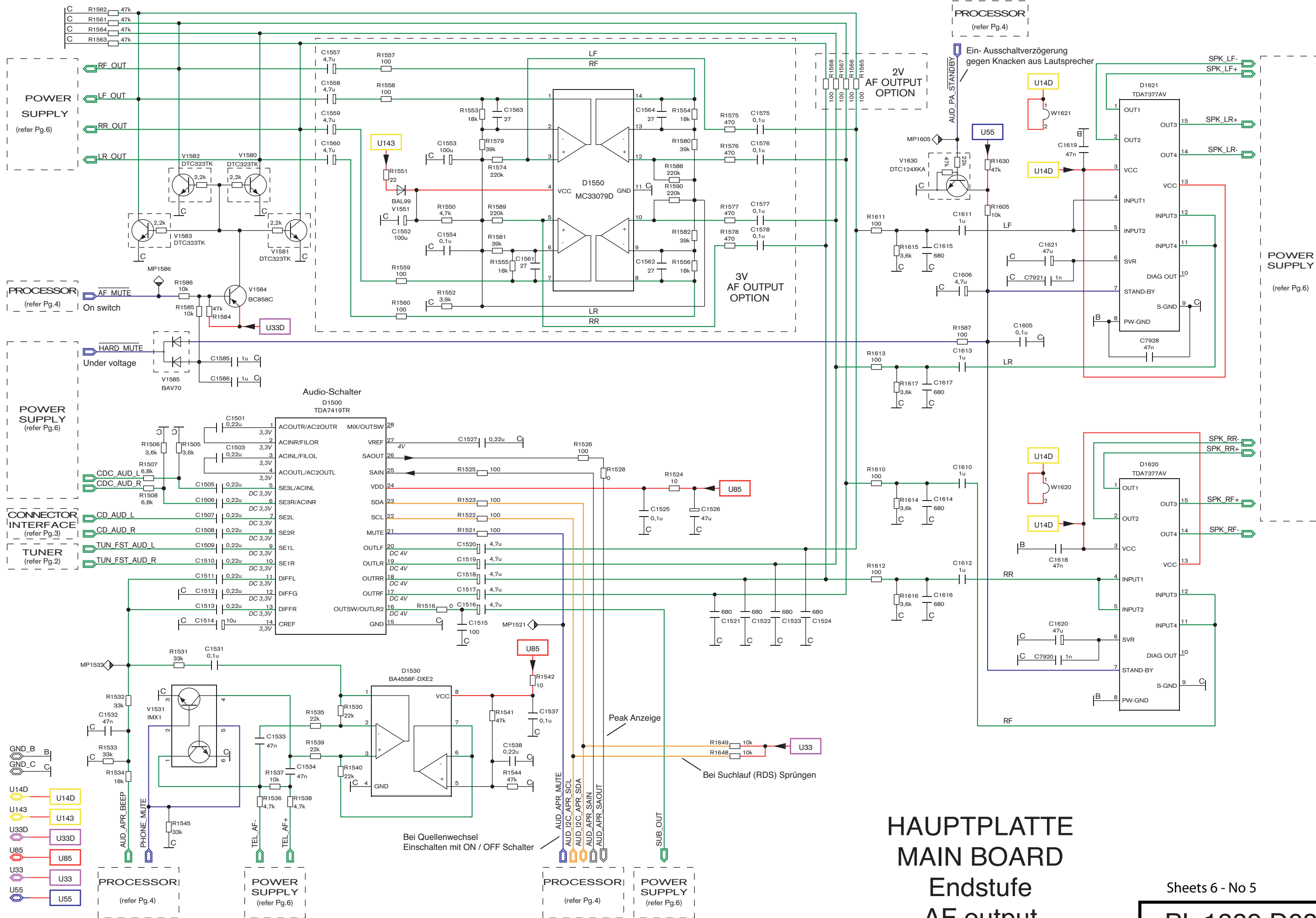
* PANEL INTERFACE OPTION
 # ESD PROTECTION OPTION

IR-EYE option
 Wird nicht bestückt
 Would not be inserted
 Kiel CD36
 Malaga CD36
 Essen MP36

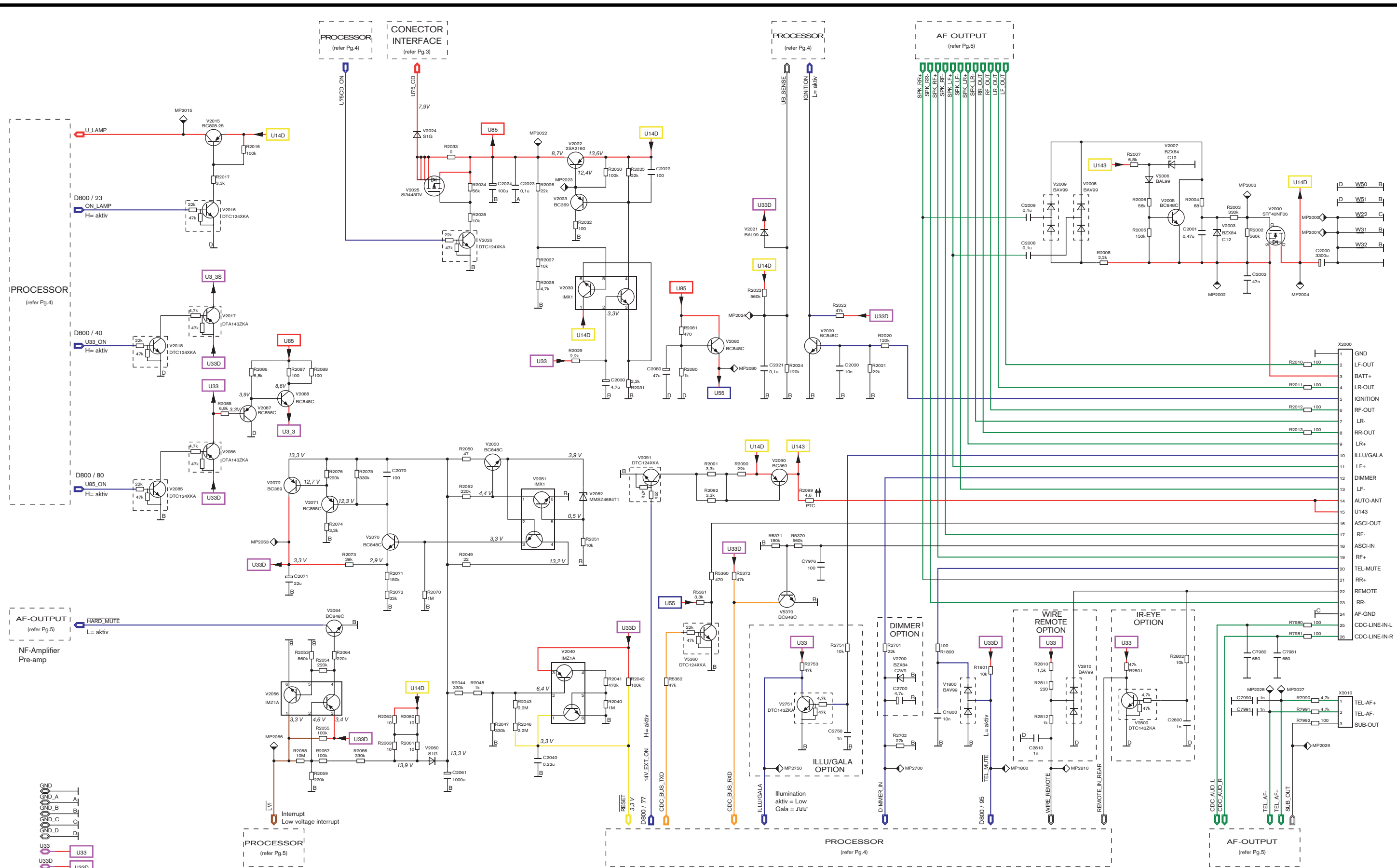
HAUPTPLATTE MAIN BOARD Prozessor Processor

Sheets 6 - No 4

PL 1889 D03



**HAUPTPLATTE
MAIN BOARD
Endstufe
AF output**



HAUPTPLATTE
 MAIN BOARD
 Spannungsversorgung
 Power supply

FEATURES		7 646 160 310	7 646 170 310	7 646 190 510	7 646 070 310	7 646 080 310	7 646 090 510	7 646 450 310	7 646 460 310	7 646 470 510	7 646 480 310	7 646 490 510	7 646 050 510	7 646 150 510	7 646 065 510	7 646 070 310	7 646 170 310	7 646 176 310	7 646 075 310	7 646 085 510	7 646 185 510
		8 638 201 889	8 638 201 890	8 638 201 891	8 638 201 892	8 638 201 893	8 638 201 894	8 638 201 895	8 638 201 896	8 638 201 897	8 638 201 898	8 638 201 899	8 638 201 900	8 638 201 900	8 638 201 901	8 638 201 902	8 638 201 903	8 638 201 903	8 638 201 903	8 638 202 463	8 638 202 463
		San Remo MP26 RDS	Milano MP26 RDS	Daytona MP26 NRDS	Santa Cruz MP36 RDS	Valencia MP36 RDS	Mauui MP36 NRDS	Sevilla MP36 RDS	Alicante MP36 RDS	Key West MP36 NRDS	Orlando MP46 RDS	Bahamas MP46 NRDS	Kiel CD36 RDS	Essen MP36 RDS	Malaga CD36 RDS	Vancouver CD36 RDS	Calgary MP36 RDS	München MP36 RDS	Bristol CD36 RDS	Laguna CD36 NRDS	Bermuda MP36 NRDS
TUNER	C4	-	-	-	-	-	-	-	-	-	-	-	-	-	-	-	-	-	-	-	-
	C20	-	-	-	-	-	-	-	-	-	-	-	-	-	-	-	-	-	-	-	-
	C40	-	-	-	-	-	-	-	-	-	-	-	-	-	-	-	-	-	-	-	-
	C45	-	-	-	-	-	-	-	-	-	-	-	-	-	-	-	-	-	-	-	-
	C602	X	X	X	X	X	X	X	X	X	X	X	-	-	X	X	X	X	X	X	X
	C603	X	X	X	X	X	X	X	X	X	X	X	-	-	X	X	X	X	X	X	X
	C604	X	X	X	X	X	X	X	X	X	X	X	-	-	X	X	X	X	X	X	X
	C605	X	X	X	X	X	X	X	X	X	X	X	-	-	X	X	X	X	X	X	X
	C606	X	X	X	X	X	X	X	X	X	X	X	-	-	X	X	X	X	X	X	X
	C608	X	X	X	X	X	X	X	X	X	X	X	-	-	X	X	X	X	X	X	X
	C611	X	X	X	X	X	X	X	X	X	X	X	-	-	X	X	X	X	X	X	X
	C612	X	X	X	X	X	X	X	X	X	X	X	-	-	X	X	X	X	X	X	X
	C614	X	X	X	X	X	X	X	X	X	X	X	-	-	X	X	X	X	X	X	X
	C635	X	X	X	X	X	X	X	X	X	X	X	-	-	X	X	X	X	X	X	X
	C650	X	X	X	X	X	X	X	X	X	X	X	-	-	X	X	X	X	X	X	X
	C74	-	-	-	-	-	-	-	-	-	-	-	-	-	-	-	-	-	-	-	-
	L3	-	-	-	-	-	-	-	-	-	-	-	-	-	-	-	-	-	-	-	-
	L40	-	-	-	-	-	-	-	-	-	-	-	-	-	-	-	-	-	-	-	-
	L611	X	X	X	X	X	X	X	X	X	X	X	-	-	X	X	X	X	X	X	X
	L71	-	-	-	-	-	-	-	-	-	-	-	-	-	-	-	-	-	-	-	-
	C701	-	-	-	-	-	-	-	-	-	-	-	-	-	-	-	-	-	-	-	-
	C702	-	-	-	-	-	-	-	-	-	-	-	-	-	-	-	-	-	-	-	-
	R21	-	-	-	-	-	-	-	-	-	-	-	-	-	-	-	-	-	-	-	-
	R24	-	-	-	-	-	-	-	-	-	-	-	-	-	-	-	-	-	-	-	-
	R25	-	-	-	-	-	-	-	-	-	-	-	-	-	-	-	-	-	-	-	-
	R28	-	-	-	-	-	-	-	-	-	-	-	-	-	-	-	-	-	-	-	-
	R42	-	-	-	-	-	-	-	-	-	-	-	X	X	-	-	-	-	-	-	-
	R60	X	X	X	X	X	X	X	X	X	X	X	-	-	X	X	X	X	X	X	X
	R603	X	X	X	X	X	X	X	X	X	X	X	-	-	X	X	X	X	X	X	X
	R607	X	X	X	X	X	X	X	X	X	X	X	-	-	X	X	X	X	X	X	X
	R608	X	X	X	X	X	X	X	X	X	X	X	-	-	X	X	X	X	X	X	X
	R61	X	X	X	X	X	X	X	X	X	X	X	-	-	X	X	X	X	X	X	X
	R612	X	X	X	X	X	X	X	X	X	X	X	-	-	X	X	X	X	X	X	X
	R613	X	X	X	X	X	X	X	X	X	X	X	-	-	X	X	X	X	X	X	X
	R620	X	X	X	X	X	X	X	X	X	X	X	-	-	X	X	X	X	X	X	X
	R621	X	X	X	X	X	X	X	X	X	X	X	-	-	X	X	X	X	X	X	X
	R622	X	X	X	X	X	X	X	X	X	X	X	-	-	X	X	X	X	X	X	X
	R63	X	X	X	X	X	X	X	X	X	X	X	-	-	X	X	X	X	X	X	X
	R64	X	X	X	X	X	X	X	X	X	X	X	-	-	X	X	X	X	X	X	X
	R650	X	X	X	X	X	X	X	X	X	X	X	-	-	X	X	X	X	X	X	X
R702	-	-	-	-	-	-	-	-	-	-	-	-	-	-	-	-	-	-	-	-	
V60	X	X	X	X	X	X	X	X	X	X	X	-	-	X	X	X	X	X	X	X	
V600	X	X	X	X	X	X	X	X	X	X	X	-	-	X	X	X	X	X	X	X	
V61	X	X	X	X	X	X	X	X	X	X	X	-	-	X	X	X	X	X	X	X	
V62	X	X	X	X	X	X	X	X	X	X	X	-	-	X	X	X	X	X	X	X	
V620	X	X	X	X	X	X	X	X	X	X	X	-	-	X	X	X	X	X	X	X	
Z650	8928470031	8928470031	8928470007	8928470031	8928470031	8928470007	8928470031	8928470031	8928470031	8928470007	8928470031	8928470007	-	-	8928470031	8928470031	8928470031	8928470031	8928470031	8928470031	
Z651	X	X	X	X	X	X	X	X	X	X	X	-	-	X	X	X	X	X	X	X	
R658	470k	470k	39k	470k	470k	39k	470k	470k	470k	39k	470k	470k	470k	470k	470k	470k	470k	470k	470k	470k	
RDS	C631	X	X	X	X	X	X	X	X	X	X	X	X	X	X	X	X	X	X	X	
	C2400	X	X	-	X	X	-	X	X	-	X	-	X	X	X	X	X	X	X	X	X
	C2401	X	X	-	X	X	-	X	X	-	X	-	X	X	X	X	X	X	X	X	X
	C2402	X	X	-	X	X	-	X	X	-	X	-	X	X	X	X	X	X	X	X	X
	C2403	X	X	-	X	X	-	X	X	-	X	-	X	X	X	X	X	X	X	X	X
	C2404	X	X	-	X	X	-	X	X	-	X	-	X	X	X	X	X	X	X	X	X
	C2405	X	X	-	X	X	-	X	X	-	X	-	X	X	X	X	X	X	X	X	X
	C2406	X	X	-	X	X	-	X	X	-	X	-	X	X	X	X	X	X	X	X	X
	C2407	X	X	-	X	X	-	X	X	-	X	-	X	X	X	X	X	X	X	X	X
	C2408	X	X	-	X	X	-	X	X	-	X	-	X	X	X	X	X	X	X	X	X
	C2409	X	X	-	X	X	-	X	X	-	X	-	X	X	X	X	X	X	X	X	X
	C2410	-	-	-	-	-	-	-	-	-	-	-	-	-	-	-	-	-	-	-	-
	C2411	-	-	-	-	-	-	-	-	-	-	-	-	-	-	-	-	-	-	-	-
	C632	X	X	X	X	X	X	X	X	X	X	X	X	X	X	X	X	X	X	X	X
	C633	X	X	X	X	X	X	X	X	X	X	X	X	X	X	X	X	X	X	X	X
	C634	-	-	-	-	-	-	-	-	-	-	-	-	-	-	-	-	-	-	-	-
	C636	X	X	X	X	X	X	X	X	X	X	X	X	X	X	X	X	X	X	X	X
	C712	X	X	-	X	X	-	X	X	-	X	-	X	X	X	X	X	X	X	X	X
	D2400	X	X	-	X	X	-	X	X	-	X	-	X	X	X	X	X	X	X	X	X
	L1	X	X	-	X	X	-	X	X	-	X	-	X	X	X	X	X	X	X	X	X
L2	-	-	X	-	-	X	-	-	-	X	-	X	-	-	-	-	-	-	-	-	
L2400	X	X	-	X	X	-	X	X	-	X	-	X	X	X	X	X	X	X	X	X	

" X " - INSERTED

" - " - NOT INSERTED

FEATURES		7 646 160 310	7 646 170 310	7 646 190 510	7 646 070 310	7 646 080 310	7 646 090 510	7 646 450 310	7 646 460 310	7 646 470 510	7 646 480 310	7 646 490 510	7 646 050 510	7 646 150 510	7 646 065 510	7 646 070 310	7 646 170 310	7 646 176 310	7 646 075 310	7 646 085 510	7 646 185 510	
		8 638 201 889 San Remo MP26 RDS	8 638 201 890 Milano MP26 RDS	8 638 201 891 Daytona MP26 NRDS	8 638 201 892 Santa Cruz MP36 RDS	8 638 201 893 Valencia MP36 RDS	8 638 201 894 Maui MP36 NRDS	8 638 201 895 Sevilla MP36 RDS	8 638 201 896 Alicante MP36 RDS	8 638 201 897 Key West MP36 NRDS	8 638 201 898 Orlando MP46 RDS	8 638 201 899 Bahamas MP46 NRDS	8 638 201 900 Kiel CD36 RDS	8 638 201 900 Essen MP36 RDS	8 638 201 901 Malaga CD36 RDS	8 638 201 902 Vancouver CD36 RDS	8 638 201 903 Calgary MP36 RDS	8 638 201 903 München MP36 RDS	8 638 201 903 Bristol CD36 RDS	8 638 202 463 Laguna CD36 NRDS	8 638 202 463 Bermuda MP36 NRDS	
RDS	L631	X	X	X	X	X	X	X	X	X	X	X	X	X	X	X	X	X	X	X	X	
	L632	X	X	X	X	X	X	X	X	X	X	X	X	X	X	X	X	X	X	X	X	
	L633	X	X	X	X	X	X	X	X	X	X	X	X	X	X	X	X	X	X	X	X	
	L634	X	X	X	X	X	X	X	X	X	X	X	X	X	X	X	X	X	X	X	X	
	R2401	X	X	-	X	X	-	X	X	-	X	-	X	X	X	X	X	X	X	X	X	X
	R2402	X	X	-	X	X	-	X	X	-	X	-	X	X	X	X	X	X	X	X	X	X
	R2403	X	X	-	X	X	-	X	X	-	X	-	X	X	X	X	X	X	X	X	X	X
	R2404	X	X	-	X	X	-	X	X	-	X	-	X	X	X	X	X	X	X	X	X	X
	R2405	X	X	-	X	X	-	X	X	-	X	-	X	X	X	X	X	X	X	X	X	X
	R2406	-	-	-	-	-	-	-	-	-	-	-	-	-	-	-	-	-	-	-	-	-
	R2407	X	X	-	X	X	-	X	X	-	X	-	X	X	X	X	X	X	X	X	X	X
	R2408	X	X	-	X	X	-	X	X	-	X	-	X	X	X	X	X	X	X	X	X	X
	R2409	X	X	-	X	X	-	X	X	-	X	-	X	X	X	X	X	X	X	X	X	X
	R2410	X	X	-	X	X	-	X	X	-	X	-	X	X	X	X	X	X	X	X	X	X
	R2411	X	X	-	X	X	-	X	X	-	X	-	X	X	X	X	X	X	X	X	X	X
	R604	X	X	X	X	X	X	X	X	X	X	X	X	X	X	X	X	X	X	X	X	X
	R605	X	X	X	X	X	X	X	X	X	X	X	X	X	X	X	X	X	X	X	X	X
	R609	X	X	X	X	X	X	X	X	X	X	X	X	X	X	X	X	X	X	X	X	X
	R611	X	X	X	X	X	X	X	X	X	X	X	X	X	X	X	X	X	X	X	X	X
	R631	X	X	X	X	X	X	X	X	X	X	X	X	X	X	X	X	X	X	X	X	X
	R632	470	470	1,5k	470	470	1,5k	470	470	1,5k	470	1,5k	470	470	470	470	470	470	470	470	470	470
	R633	470	470	1,5k	470	470	1,5k	470	470	1,5k	470	1,5k	470	470	470	470	470	470	470	470	470	470
	R634	-	-	-	-	-	-	-	-	-	-	-	-	-	-	-	-	-	-	-	-	-
	R635	-	-	-	-	-	-	-	-	-	-	-	-	-	-	-	-	-	-	-	-	-
	R636	-	-	-	-	-	-	-	-	-	-	-	-	-	-	-	-	-	-	-	-	-
	R712	X	X	-	X	X	-	X	X	-	X	-	X	X	X	X	X	X	X	X	X	X
	V611	-	-	-	-	-	-	-	-	-	-	-	-	-	-	-	-	-	-	-	-	-
	V634	-	-	-	-	-	-	-	-	-	-	-	-	-	-	-	-	-	-	-	-	-
	XANT1	X	X	-	X	X	-	X	X	-	X	-	X	X	X	X	X	X	X	X	X	X
	XANT2	-	-	X	-	-	X	-	-	-	X	-	X	-	-	-	-	-	-	-	-	-
	Z2400	-	-	-	-	-	-	-	-	-	-	-	-	-	-	-	-	-	-	-	-	-
	Z635	-	-	-	-	-	-	-	-	-	-	-	-	-	-	-	-	-	-	-	-	-
ILLU GALA	R2753	-	-	-	-	-	-	-	-	-	-	-	-	-	-	-	-	-	-	-	-	
	C2750	-	-	-	-	-	-	-	-	-	-	-	-	-	-	-	-	-	-	-	-	
	R2751	-	-	-	-	-	-	-	-	-	-	-	-	-	-	-	-	-	-	-	-	
	V2751	-	-	-	-	-	-	-	-	-	-	-	-	-	-	-	-	-	-	-	-	
DIMMER	R2701	-	-	-	-	-	-	X	X	X	X	X	-	-	-	-	-	-	-	-	-	
	C2700	-	-	-	-	-	-	X	X	X	X	X	-	-	-	-	-	-	-	-	-	
	V2700	-	-	-	-	-	-	X	X	X	X	X	-	-	-	-	-	-	-	-	-	
ENCODER	C803	-	-	-	X	X	X	X	X	X	X	X	X	X	X	-	-	-	-	-	-	
	C804	-	-	-	X	X	X	X	X	X	X	X	X	X	X	-	-	-	-	-	-	
	R823	-	-	-	X	X	X	X	X	X	X	X	X	X	X	-	-	-	-	-	-	
	R825	-	-	-	X	X	X	X	X	X	X	X	X	X	X	-	-	-	-	-	-	
IF AMPLIFIER	C660	-	-	X	-	-	X	-	-	X	-	X	-	-	-	-	-	-	-	-	-	
	C661	-	-	X	-	-	X	-	-	X	-	X	-	-	-	-	-	-	-	-	-	
	C651	-	-	X	-	-	X	-	-	X	-	X	-	-	-	-	-	-	-	-	-	
	C662	-	-	X	-	-	X	-	-	X	-	X	-	-	-	-	-	-	-	-	-	
	R651	-	-	X	-	-	X	-	-	X	-	X	-	-	-	-	-	-	-	-	-	
	R652	X	X	-	X	X	-	X	X	-	X	-	X	X	X	X	X	X	X	X	X	X
	R660	-	-	X	-	-	X	-	-	X	-	X	-	-	-	-	-	-	-	-	-	
	R661	-	-	X	-	-	X	-	-	X	-	X	-	-	-	-	-	-	-	-	-	
	R662	-	-	X	-	-	X	-	-	X	-	X	-	-	-	-	-	-	-	-	-	
	R663	-	-	X	-	-	X	-	-	X	-	X	-	-	-	-	-	-	-	-	-	
R664	-	-	X	-	-	X	-	-	X	-	X	-	-	-	-	-	-	-	-	-		
V660	-	-	X	-	-	X	-	-	X	-	X	-	-	-	-	-	-	-	-	-		
ESD PROTECTION	R851	4,7k	4,7k	4,7k	4,7k	4,7k	4,7k	4,7k	4,7k	4,7k	22k	22k	4,7k	4,7k	4,7k	4,7k	4,7k	4,7k	4,7k	4,7k	4,7k	
	R852	4,7k	4,7k	4,7k	4,7k	4,7k	4,7k	4,7k	4,7k	4,7k	22k	22k	4,7k	4,7k	4,7k	4,7k	4,7k	4,7k	4,7k	4,7k	4,7k	
	R802	X	X	X	X	X	X	X	X	X	-	-	X	X	X	X	X	X	X	X	X	X
	R817	X	X	X	X	X	X	X	X	X	-	-	X	X	X	X	X	X	X	X	X	X
	R878	-	-	-	-	-	-	-	-	-	-	-	X	X	-	-	-	-	-	-	-	-
	R879	-	-	-	-	-	-	-	-	-	-	-	X	X	-	-	-	-	-	-	-	-
INTERRUPT	C822	-	-	-	-	-	-	-	-	-	-	-	-	-	-	-	-	-	-	-	-	
	C823	-	-	-	-	-	-	-	-	-	-	-	-	-	-	-	-	-	-	-	-	
	R872	-	-	-	-	-	-	-	-	-	-	-	-	-	-	-	-	-	-	-	-	
	R874	-	-	-	-	-	-	-	-	-	-	-	-	-	-	-	-	-	-	-	-	
	R875	-	-	-	-	-	-	-	-	-	-	-	-	-	-	-	-	-	-	-	-	
	V816	-	-	-	-	-	-	-	-	-	-	-	-	-	-	-	-	-	-	-	-	-
	V817	-	-	-	-	-	-	-	-	-	-	-	-	-	-	-	-	-	-	-	-	-
IR-EYE	C2800	X	X	X	X	X	X	X	X	X	X	X	X	X	X	X	X	X	X	X	X	
	R843	X	X	X	X	X	X	X	X	X	X	X	X	X	X	X	X	X	X	X	X	
	R2801	X	X	X	X	X	X	X	X	X	X	X	X	X	X	X	X	X	X	X	X	

" X " - INSERTED

" - " - NOT INSERTED

FEATURES		7 646 160 310	7 646 170 310	7 646 190 510	7 646 070 310	7 646 080 310	7 646 090 510	7 646 450 310	7 646 460 310	7 646 470 510	7 646 480 310	7 646 490 510	7 646 050 510	7 646 150 510	7 646 065 510	7 646 070 310	7 646 170 310	7 646 176 310	7 646 075 310	7 646 085 510	7 646 185 510
		8 638 201 889	8 638 201 890	8 638 201 891	8 638 201 892	8 638 201 893	8 638 201 894	8 638 201 895	8 638 201 896	8 638 201 897	8 638 201 898	8 638 201 899	8 638 201 900	8 638 201 900	8 638 201 901	8 638 201 902	8 638 201 903	8 638 201 903	8 638 201 903	8 638 202 463	8 638 202 463
		San Remo MP26 RDS	Milano MP26 RDS	Daytona MP26 NRDS	Santa Cruz MP36 RDS	Valencia MP36 RDS	Maui MP36 NRDS	Sevilla MP36 RDS	Alicante MP36 RDS	Key West MP36 NRDS	Orlando MP46 RDS	Bahamas MP46 NRDS	Kiel CD36 RDS	Essen MP36 RDS	Malaga CD36 RDS	Vancouver CD36 RDS	Calgary MP36 RDS	München MP36 RDS	Bristol CD36 RDS	Laguna CD36 NRDS	Bermuda MP36 NRDS
IR-EYE	R2802	X	X	X	X	X	X	X	X	X	X	X	X	X	X	X	X	X	X	X	X
	V815	X	X	X	X	X	X	X	X	X	X	X	-	-	-	X	X	X	X	X	X
	V2800	X	X	X	X	X	X	X	X	X	X	X	X	X	X	X	X	X	X	X	X
LCD ILLUMINATION	R834	-	-	-	X	X	X	X	X	X	X	X	-	-	-	-	-	-	-	-	-
	R838	-	-	-	X	X	X	X	X	X	X	X	-	-	-	-	-	-	-	-	-
	R845	-	-	-	X	X	X	X	X	X	X	X	-	-	-	-	-	-	-	-	-
	C806	-	-	-	X	X	X	X	X	X	X	X	-	-	-	-	-	-	-	-	-
	C807	-	-	-	X	X	X	X	X	X	X	X	-	-	-	-	-	-	-	-	-
	C815	-	-	-	X	X	X	X	X	X	X	X	-	-	-	-	-	-	-	-	-
SUB CLOCK	C820	-	-	-	-	-	-	-	-	-	-	-	-	-	-	-	-	-	-	-	-
	C821	-	-	-	-	-	-	-	-	-	-	-	-	-	-	-	-	-	-	-	-
	Z801	-	-	-	-	-	-	-	-	-	-	-	-	-	-	-	-	-	-	-	-
PANEL INTERFACE	X1004	-	-	-	-	-	-	-	-	-	X	X	-	-	-	-	-	-	-	-	-
	X1005	X	X	X	X	X	X	X	X	X	-	-	X	X	X	X	X	X	X	X	X
FLASH	X850	-	-	-	-	-	-	-	-	-	-	-	-	-	-	-	-	-	-	-	-
2V AF OUTPUT	R1565	-	-	-	-	-	-	-	-	-	-	-	X	X	X	X	X	X	X	X	X
	R1566	-	-	-	-	-	-	-	-	-	-	-	X	X	X	X	X	X	X	X	X
	R1567	-	-	-	-	-	-	-	-	-	-	-	X	X	X	X	X	X	X	X	X
	R1568	-	-	-	-	-	-	-	-	-	-	-	X	X	X	X	X	X	X	X	X
3V AF OUTPUT	C1552	X	X	X	X	X	X	X	X	X	X	X	-	-	-	-	-	-	-	-	-
	C1553	X	X	X	X	X	X	X	X	X	X	X	-	-	-	-	-	-	-	-	-
	C1554	X	X	X	X	X	X	X	X	X	X	X	-	-	-	-	-	-	-	-	-
	C1557	X	X	X	X	X	X	X	X	X	X	X	-	-	-	-	-	-	-	-	-
	C1558	X	X	X	X	X	X	X	X	X	X	X	-	-	-	-	-	-	-	-	-
	C1559	X	X	X	X	X	X	X	X	X	X	X	-	-	-	-	-	-	-	-	-
	C1560	X	X	X	X	X	X	X	X	X	X	X	-	-	-	-	-	-	-	-	-
	C1561	X	X	X	X	X	X	X	X	X	X	X	-	-	-	-	-	-	-	-	-
	C1562	X	X	X	X	X	X	X	X	X	X	X	-	-	-	-	-	-	-	-	-
	C1563	X	X	X	X	X	X	X	X	X	X	X	-	-	-	-	-	-	-	-	-
	C1564	X	X	X	X	X	X	X	X	X	X	X	-	-	-	-	-	-	-	-	-
	C1575	X	X	X	X	X	X	X	X	X	X	X	-	-	-	-	-	-	-	-	-
	C1576	X	X	X	X	X	X	X	X	X	X	X	-	-	-	-	-	-	-	-	-
	C1577	X	X	X	X	X	X	X	X	X	X	X	-	-	-	-	-	-	-	-	-
	C1578	X	X	X	X	X	X	X	X	X	X	X	-	-	-	-	-	-	-	-	-
	D1550	X	X	X	X	X	X	X	X	X	X	X	-	-	-	-	-	-	-	-	-
	R1550	X	X	X	X	X	X	X	X	X	X	X	-	-	-	-	-	-	-	-	-
	R1551	X	X	X	X	X	X	X	X	X	X	X	-	-	-	-	-	-	-	-	-
	R1552	X	X	X	X	X	X	X	X	X	X	X	-	-	-	-	-	-	-	-	-
	R1553	X	X	X	X	X	X	X	X	X	X	X	-	-	-	-	-	-	-	-	-
	R1554	X	X	X	X	X	X	X	X	X	X	X	-	-	-	-	-	-	-	-	-
	R1555	X	X	X	X	X	X	X	X	X	X	X	-	-	-	-	-	-	-	-	-
	R1556	X	X	X	X	X	X	X	X	X	X	X	-	-	-	-	-	-	-	-	-
	R1557	X	X	X	X	X	X	X	X	X	X	X	-	-	-	-	-	-	-	-	-
	R1558	X	X	X	X	X	X	X	X	X	X	X	-	-	-	-	-	-	-	-	-
	R1559	X	X	X	X	X	X	X	X	X	X	X	-	-	-	-	-	-	-	-	-
	R1560	X	X	X	X	X	X	X	X	X	X	X	-	-	-	-	-	-	-	-	-
	R1574	X	X	X	X	X	X	X	X	X	X	X	-	-	-	-	-	-	-	-	-
	R1575	X	X	X	X	X	X	X	X	X	X	X	-	-	-	-	-	-	-	-	-
	R1576	X	X	X	X	X	X	X	X	X	X	X	-	-	-	-	-	-	-	-	-
	R1577	X	X	X	X	X	X	X	X	X	X	X	-	-	-	-	-	-	-	-	-
	R1578	X	X	X	X	X	X	X	X	X	X	X	-	-	-	-	-	-	-	-	-
	R1579	X	X	X	X	X	X	X	X	X	X	X	-	-	-	-	-	-	-	-	-
	R1580	X	X	X	X	X	X	X	X	X	X	X	-	-	-	-	-	-	-	-	-
R1581	X	X	X	X	X	X	X	X	X	X	X	-	-	-	-	-	-	-	-	-	
R1582	X	X	X	X	X	X	X	X	X	X	X	-	-	-	-	-	-	-	-	-	
R1588	X	X	X	X	X	X	X	X	X	X	X	-	-	-	-	-	-	-	-	-	
R1589	X	X	X	X	X	X	X	X	X	X	X	-	-	-	-	-	-	-	-	-	
R1590	X	X	X	X	X	X	X	X	X	X	X	-	-	-	-	-	-	-	-	-	
V1551	X	X	X	X	X	X	X	X	X	X	X	-	-	-	-	-	-	-	-	-	
WIRE REMOTE	C2810	-	-	-	-	-	-	-	-	-	-	-	-	-	-	-	-	-	-	-	-
	R805	-	-	-	-	-	-	-	-	-	-	-	-	-	-	-	-	-	-	-	-
	R2810	-	-	-	-	-	-	-	-	-	-	-	-	-	-	-	-	-	-	-	-
	R2811	-	-	-	-	-	-	-	-	-	-	-	-	-	-	-	-	-	-	-	-
	R2812	-	-	-	-	-	-	-	-	-	-	-	-	-	-	-	-	-	-	-	-
	V2810	-	-	-	-	-	-	-	-	-	-	-	-	-	-	-	-	-	-	-	-
MODEL-INDICATOR	R9889	X	-	-	-	-	-	-	-	-	-	-	-	-	-	-	-	-	-	-	-
	R9890	-	X	-	-	-	-	-	-	-	-	-	-	-	-	-	-	-	-	-	-
	R9891	-	-	X	-	-	-	-	-	-	-	-	-	-	-	-	-	-	-	-	-
	R9892	-	-	-	X	-	-	-	-	-	-	-	-	-	-	-	-	-	-	-	-
	R9893	-	-	-	-	X	-	-	-	-	-	-	-	-	-	-	-	-	-	-	-
	R9894	-	-	-	-	-	X	-	-	-	-	-	-	-	-	-	-	-	-	-	-

" X " - INSERTED

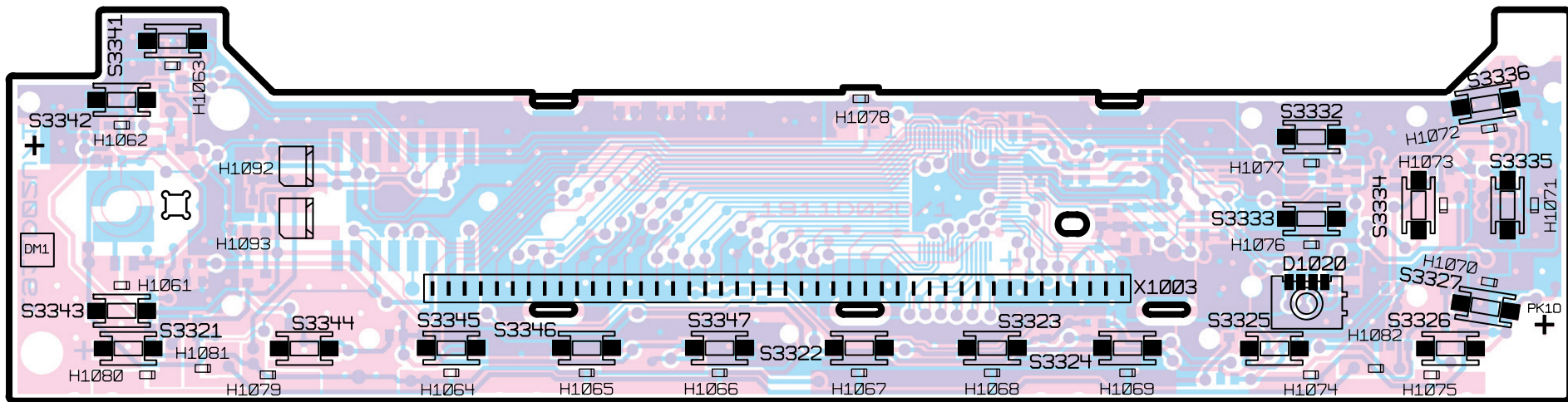
" - " - NOT INSERTED

Schalterplatte

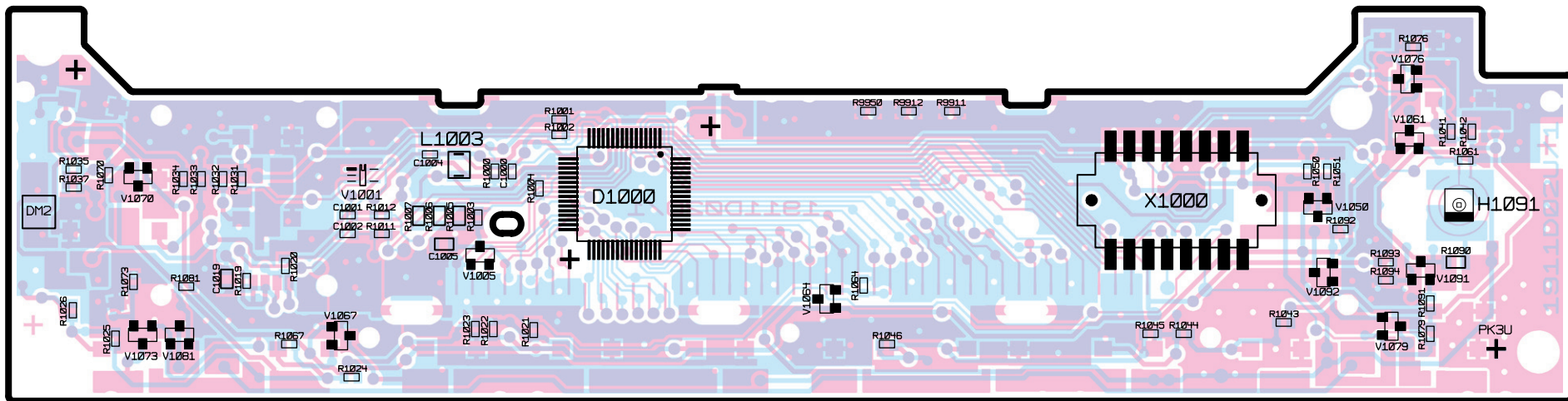
Key board

PL 8 638 211 911 D02

Chip



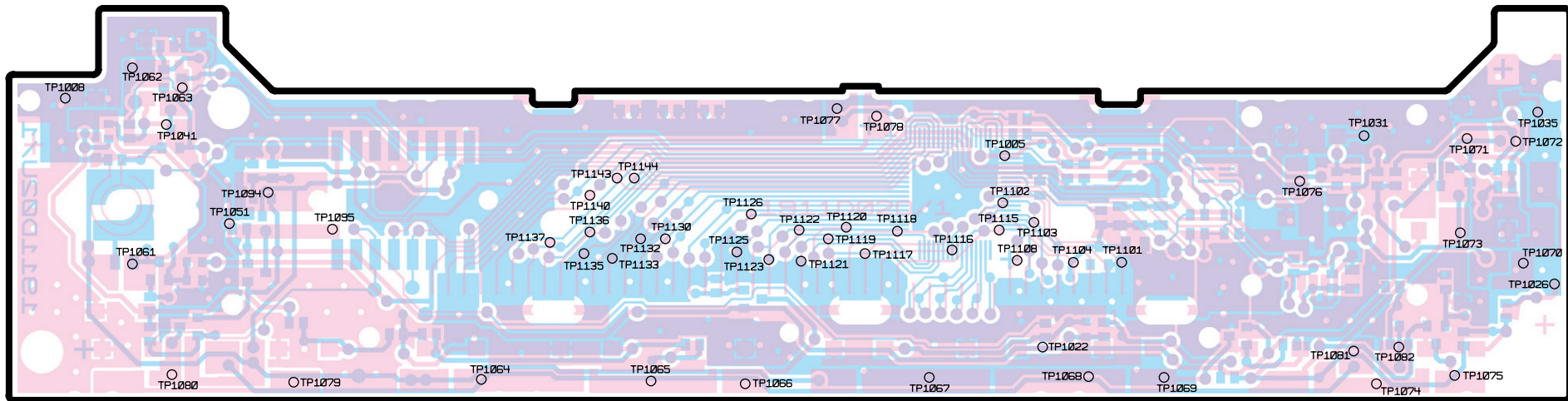
Schalterplatte
Key board
PL 8 638 211 911 D02
Chip
↑



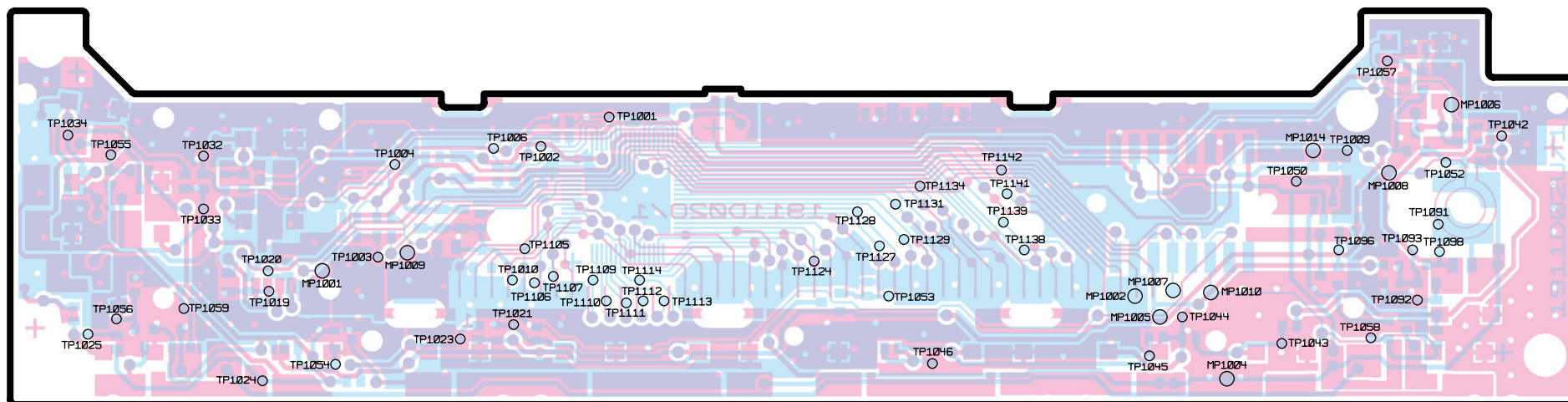
Schalterplatte

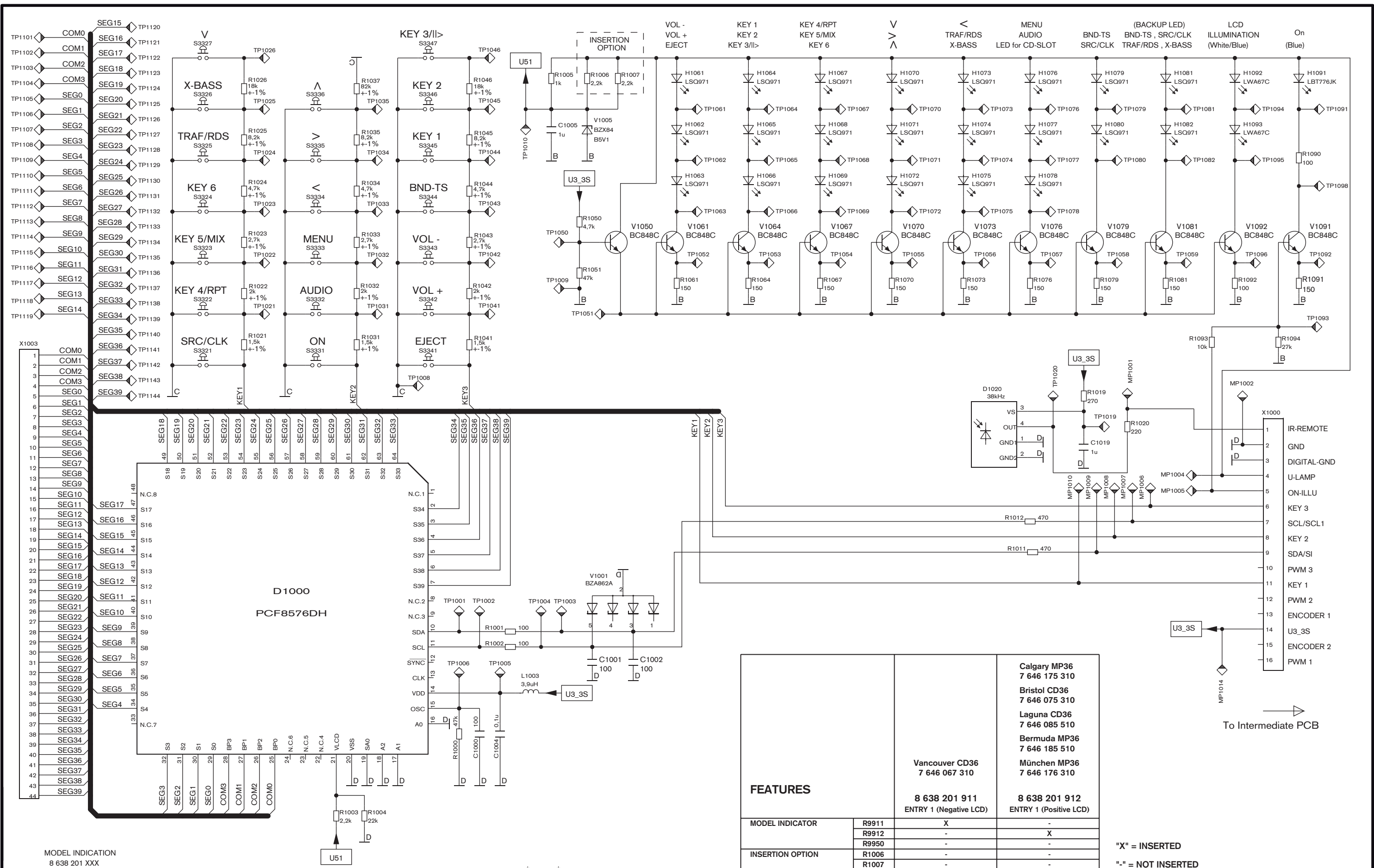
Key board

PL 8 638 211 911 D02



Schalterplatte
Key board
PL 8 638 211 911 D02



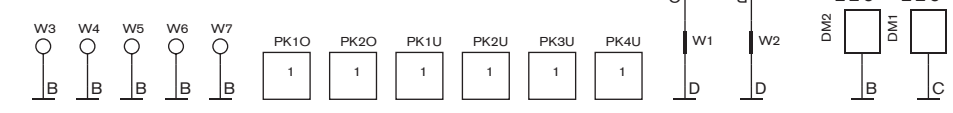
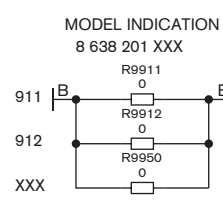


FEATURES	Vancouver CD36 7 646 067 310		Calgary MP36 7 646 175 310 Bristol CD36 7 646 075 310 Laguna CD36 7 646 085 510 Bermuda MP36 7 646 185 510 München MP36 7 646 176 310	
	8 638 201 911 ENTRY 1 (Negative LCD)	8 638 201 912 ENTRY 1 (Positive LCD)		
MODEL INDICATOR	R9911	X	-	-
	R9912	-	X	-
	R9950	-	-	X
INSERTION OPTION	R1006	-	-	-
	R1007	-	-	-

"X" = INSERTED
 "-" = NOT INSERTED

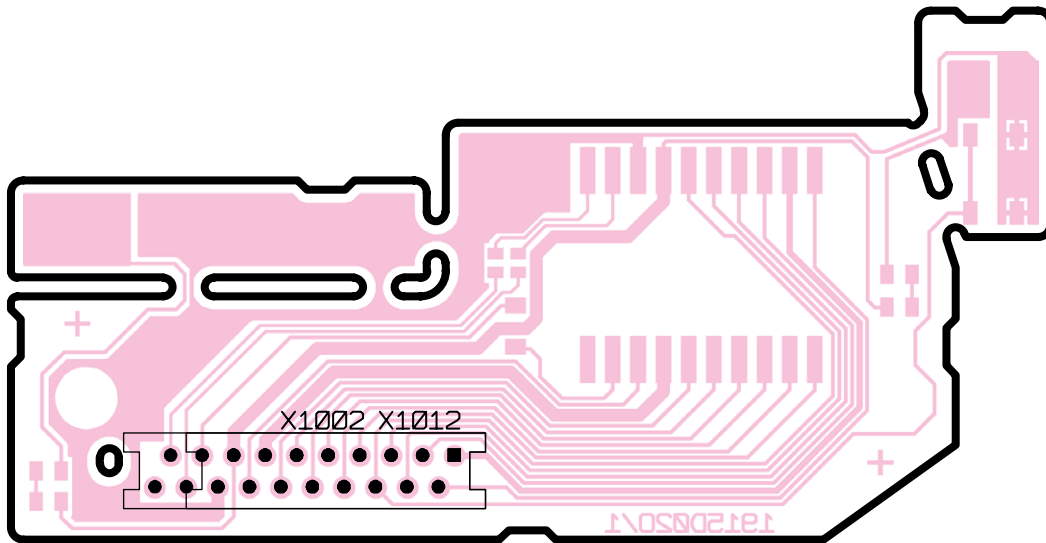
SCHALTERPLATTE KEY BOARD

PL 1911 D02

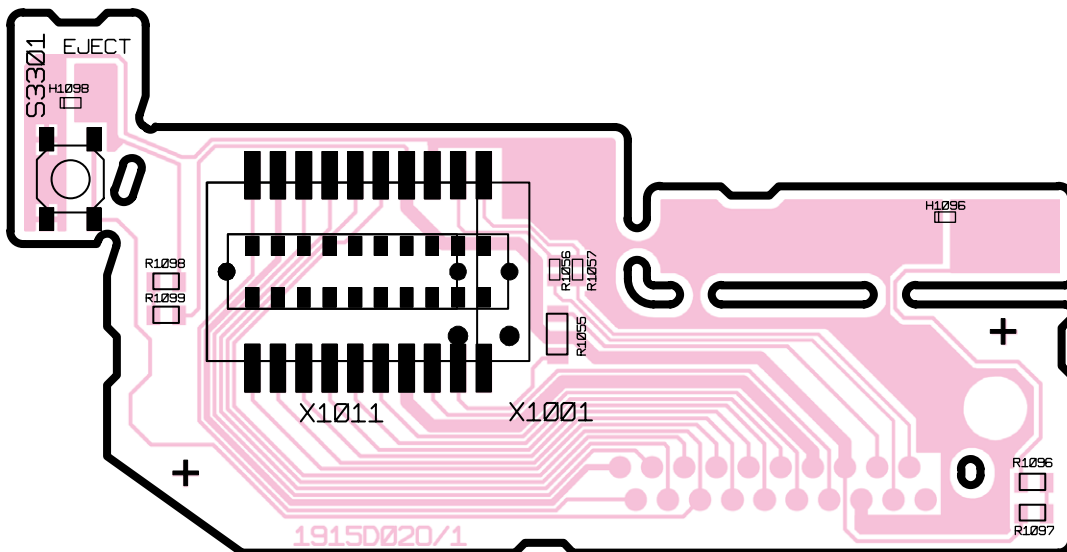


To Intermediate PCB

Zwischenplatte
Intermediate board
PL 8 638 211 915 D02

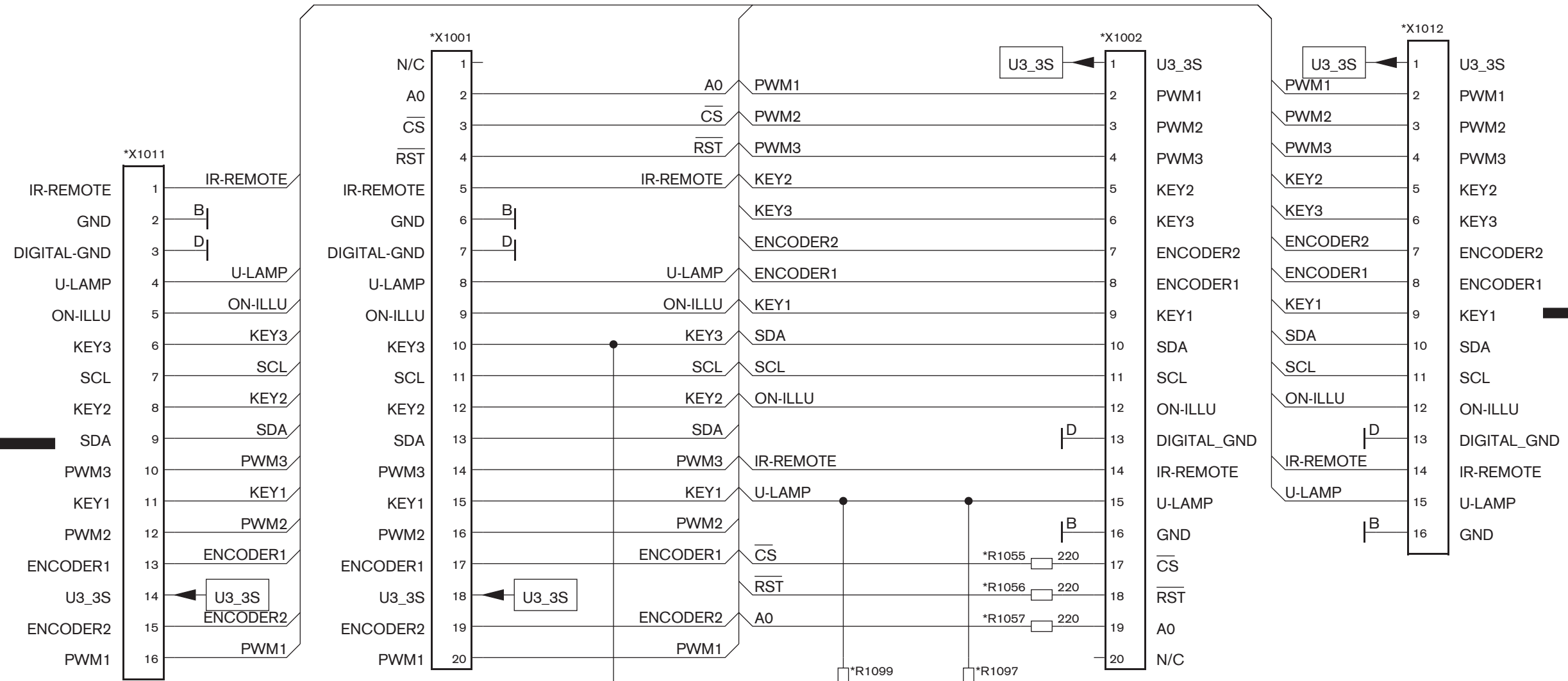


Zwischenplatte
Intermediate board
PL 8 638 211 915 D02



CONNECT TO FRONT PCB

CONNECT TO MAIN PCB

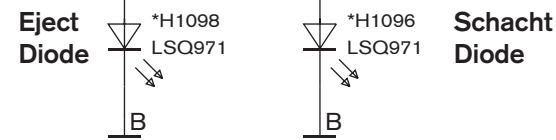
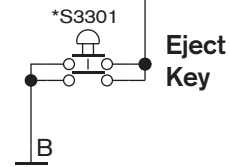


INSERTION TABLE

FEATURES	7 646 160 310	7 646 070 310	7 646 480 310
		7 646 170 310	7 646 080 310
	7 646 190 510	7 646 090 510	
	7 646 XXX 310	7 646 450 310	
	7 646 XXX 310	7 646 460 310	
		7 646 470 510	
	8 638 201 913	8 638 201 914	8 638 201 915
	ENTRY 1 & 2	ENTRY 2a & 3	ENTRY 4
FACIAL DESIGN	R1055	-	-
	R1056	-	-
	R1057	-	-
	R1096	-	X
	R1097	-	X
	R1098	-	X
	R1099	-	X
	H1096	-	X
	H1098	-	X
	S3331	-	X
	X1001	-	X
	X1002	-	X
	X1011	X	X
	X1012	X	X

26 er 36 er 46 er

"X" = INSERTED
 "-" = NOT INSERTED

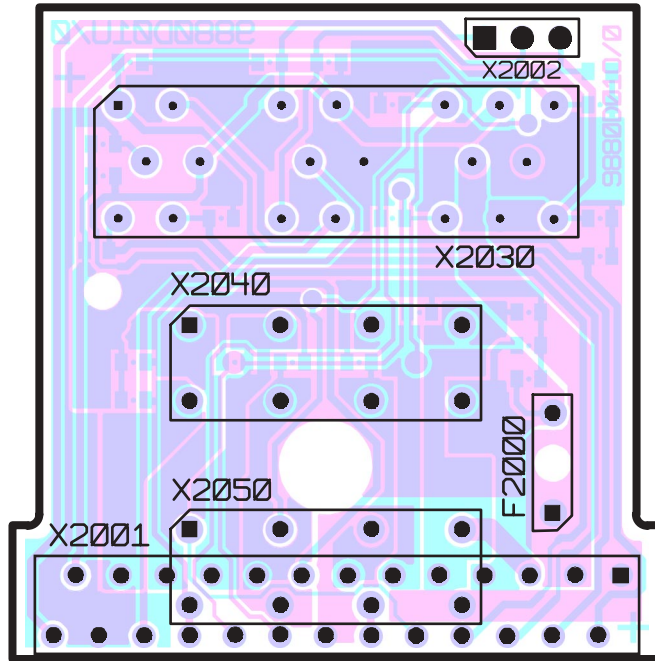


*** = Refer to Insertion Table

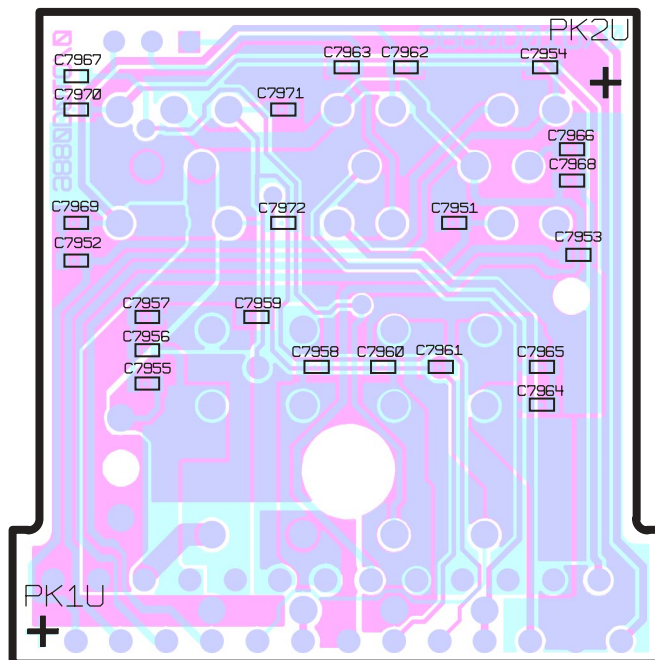
ZWISCHENPLATTE
 INTERMEDIATE BOARD

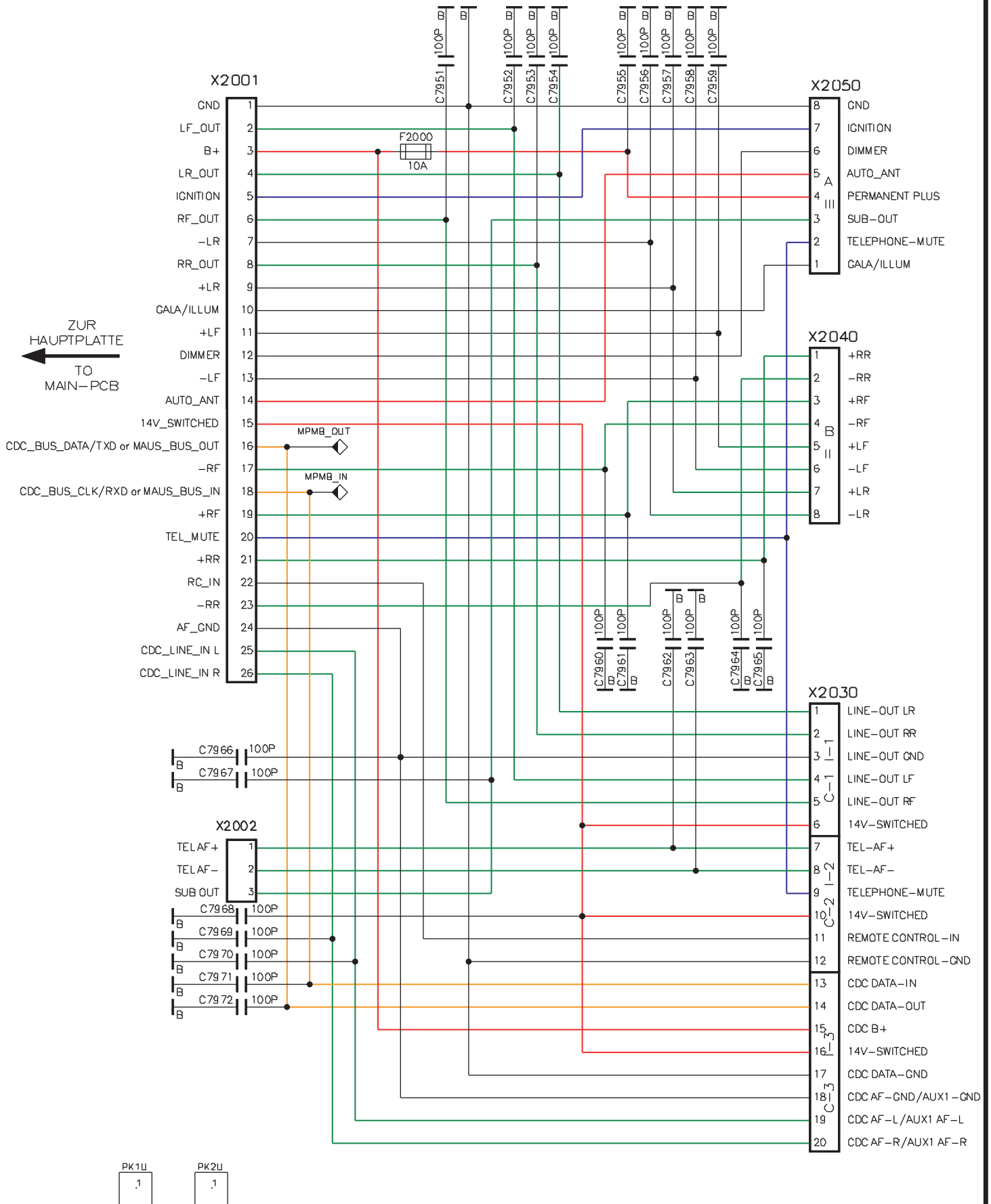
PL 1915 D02

Anschlussplatte
Connector board
PL 8 638 219 880 D01



Anschlussplatte
Connector board
PL 8 638 219 880 D01

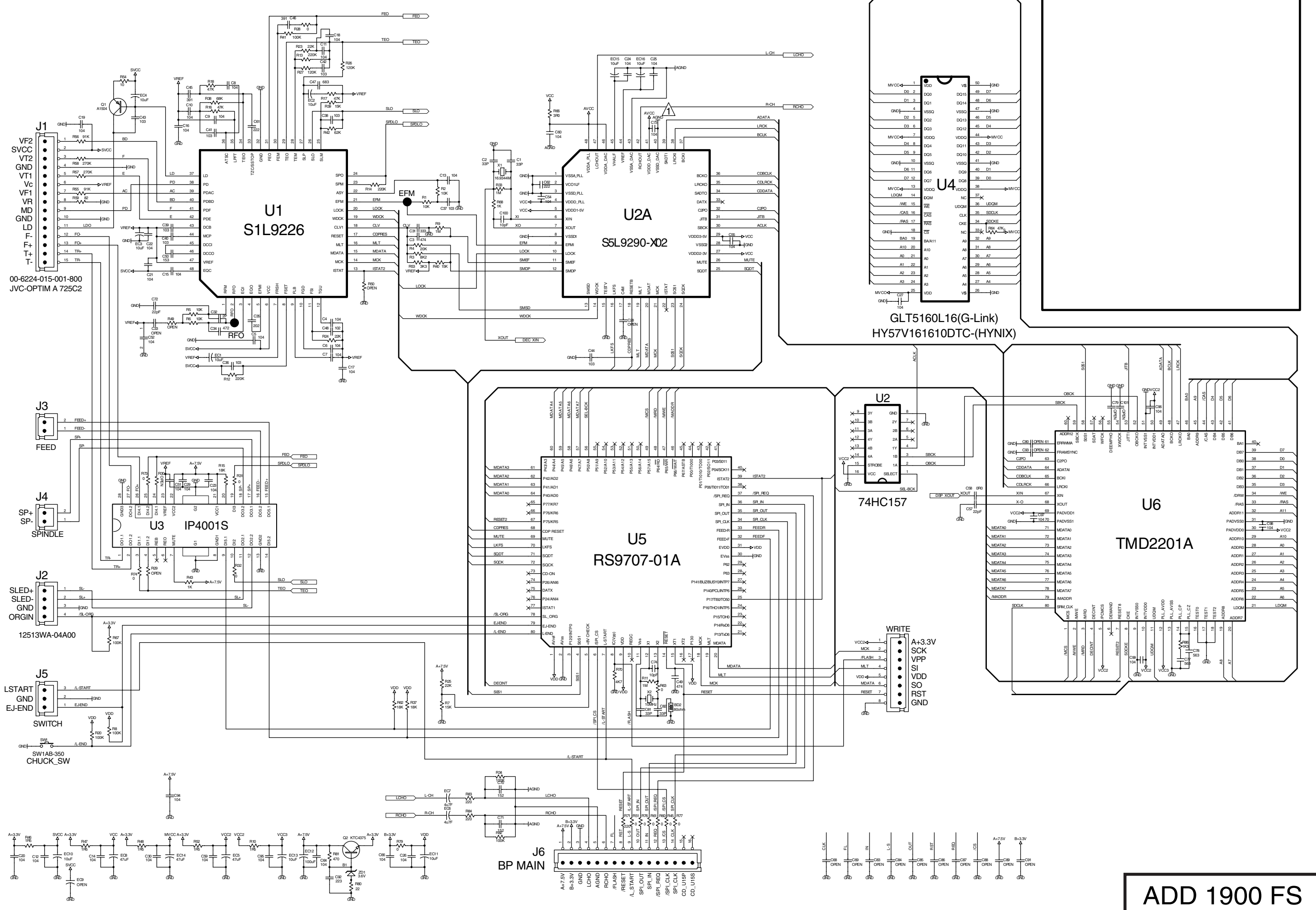




ANSCHLUSSPLATTE CONNECTOR BOARD

PL 9880 D01

△ : 2004.10.10 --> S/N 개선



ADD 1900 FS