

UNINTERRUPTIBLE POWER SYSTEM

# SERVICE MANUAL

*Blazer series*

*400VA, 600VA and 800VA*

Model:

*400VA: 400VA/115V, 400VA/230V*

*600VA: 600VA/115V, 600VA/230V*

*800VA: 800VA/115V, 800VA/230V*

115V/220V/230V/240V 50Hz/60Hz

Prepared by:

*Fulin*

April 9, 2002

# **Table of Contents**

Chapter

***A. Introduction***

***B. Block Diagram***

***C. Control Power Circuit***

***D. Battery Charger***

***E. Line And Zero-Crossing Detection***

***F. Inverter Operation***

***G. Active Clamp***

***H. Microcontroller(CPU) Control Circuit***

***I. Displays ,Audio alarm and control button***

***J. Load Detection Circuit***

***K. Interface Circuit***

***L. Troubleshooting***

## **Index of Figure**

### **Electrical circuit Schematic diagram**

- Figure S-1 Control Power Circuit
- Figure S-2 Charger Circuit
- Figure S-3 Line and Zero Crossing detecting Circuit
- Figure S-4 Inverter Circuit
- Figure S-5 CPU Circuit
- Figure S-6 Relay Circuit
- Figure S-7 Panel Circuit
- Figure S-8 Load Detecting Circuit
- Figure S-9 RS232 Circuit

### **Waveform & flowchart**

- Figure W-1 Cold Start
- Figure W-2 Zero Crossing
- Figure W-3 Inverter Circuit (1)
- Figure W-4 Inverter Circuit (2)
- Figure W-5 Clamp Circuit
- Figure W-6 Relay speed up capacitor
- Figure W-7 Battery mode examination flowchart
- Figure W-8 Line mode examination flowchart

## ***A. Introduction***

Blazer series is an off-line power System that has a square wave output. It prevents impulse, surge, sag and power outage situations. It provides the UPS output load with a reliable source. It has the following functions:

1.Booster:

If the commercial line is under voltage, the Booster will rise the UPS output voltage to 1.18 times its input voltage.

2.Buck:

If the commercial line is over voltage, the Buck will reduce the UPS output voltage to 0.85 times its input voltage.

3.50/60Hz Automatic Frequency Selection:

The output frequency will automatically match the input frequency (50 or 60Hz).

4.Communication Port(RS232+open collector):

Computer interface with RS232 communication and remote shutdown capacities.

5.Data line/telephone line protect:

The unit provides RJ11 receptacles to provide transient voltage surge suppression (TVSS) for data line or telephone line.

6. Cold start( DC start):

It comes with a DC start feature while without input source.

This manual contains block diagram, principle of operation, system outline and troubleshooting.

## **B. Block Diagram**

The Block diagram of Blazer series (refer to Figure S-1) is divided into the following parts:

- a) Main relay (MAIN-RY):  
To switch the UPS between line and battery mode. Its mechanical action also affect the UPS power loss time.
- b) Booster Relay(BOOST-RY):  
At line mode, this is a switch used to increase UPS output voltage 18% when the commercial line source is under voltage.  
Relay OFF : line voltage is normal  
Relay ON : line voltage is under voltage.
- c) Buck Relay:  
At line mode, this is a switch used to decrease UPS output voltage 15% when the commercial line source is over voltage.  
Relay OFF : line voltage is normal  
Relay ON : line voltage is over voltage.
- d) Main Transformer(MAIN TX) :  
The Main transformer has three functions:
  - 1. Inverter Transformer  
Provides inverter voltage to UPS output. It performs a push-pull transformer when UPS at battery mode.
  - 2. Booster/Buck  
Thus the output voltage at booster mode is given by (Boost Relay ON) :

$$V_{OUT} = V_{IN} * 1.18$$

The Buck relay is ON when the line voltage is over voltage. It can reduce output voltage by:

$$V_{OUT} = 0.85 V_{IN}$$

- 3. Charger :  
The Main transformer has a charger coil (TXC) to supply an adequate voltage to charger circuit.
- e) Line Sense  
To process the attenuated signal (including input voltage and zero crossing) from rectifier and send the results to CPU.
- f) CPU (NEC  $\mu$ PD78F9116A)  
The Central Process Unit
- g) Electricity Switch  
It controls the 5 Volts and 12 Volts DC supplies. +5Volts and +12Volts Control Power Generator:  
Provide +5Volts (generated from 7805 regulator) and +12Volts DC power supply
- h) Charger:  
The source for the Charger comes from the charger coil (TXC) of the Main transformer. A traditional linear charging circuit is used for the Blazer series . Regulator LM317 is used to adjust the battery charging voltage. The charging voltage is 13.3—14.2V.

i) Inverter circuit :

The inverter circuit is based on a push-pull circuitry to drive inverter transformer coil .

j) Panel PCB :

The UPS display device contains one led and one switche .

k) Batteries:

Acts as a power supply source while the UPS is at battery mode. Different types of batteries are used for different models of UPS:

600VA : 12V7Ah \* 1 pc

400VA : 6V4Ah \* 2pc

800VA : 1245W\* 1pc

## **C. Control power circuit**

The control power ( $+12V_{DC}$  and  $+5V_{DC}$ ) comes from the following cases(Figure S-2)

1) Start without input AC power (Cold start):

A “Cold start “ is described as follows:

1. When “ON/OFF” switch(SW1) is depressed, a positive battery current flows through SW1 to charge C15.
2. Q12 base receives a HI pulse and turn on (signal bypass C15 at  $t=0$  and charge C15 at  $t>0$ ).
3. When Q12 turns on, the Q12 collector will drop to LOW and turn on Q11(MPS2907A).
4. When Q11 turns on ,the positive battery voltage via Q12 collector and establishes a 12 volt. Power supply. The 12 volts. power supply passes through U03(78L05) generating a 5 volt DC logic power supply.And CPU send HI signal(shutdown)to sustain Q12 on.
5. Figure W-1 shows the pulse on the C15,i.e. the base signal of Q12 during the cold start.

2) Start with input AC power(AC start) :

1. When we connected UPS with AC source, AC voltage pass through fuse ,full wave rectifier(D21,D22,D23,D24) and ZD02(Zenor diode) turns on Q12.
2. If on/off switch is depressed,As a result Q11 turns on and establishes a 12 volts and 5 volts DC power supply similar to Cold start.

The SHUTDOWN network, triggered by pin 17 of the CPU, is used to shutdown the UPS from Battery mode. When a battery under-voltage occurs, the CPU sends a Low signal to turn off Q12. This causes Q11 to be turned off and isolates the control power from batteries.

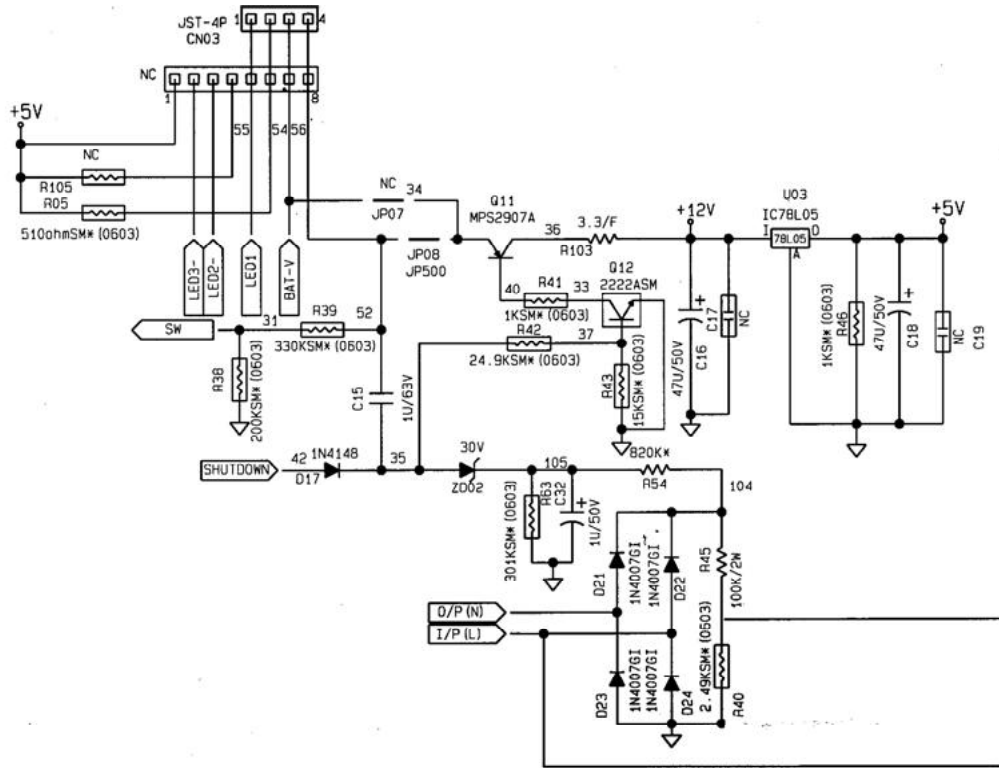
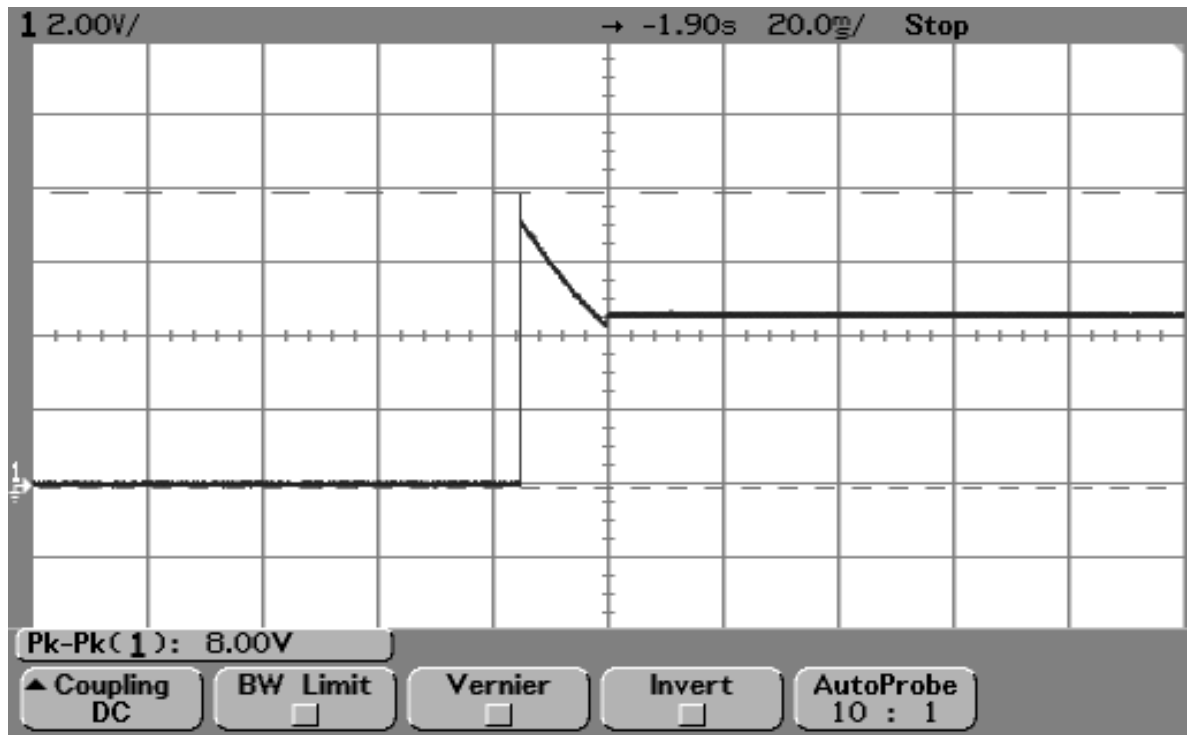


Figure S-1 Control Power circuit





CH1 : C15 à GND

**Figure W-1 Cold Start**

## ***D. Battery Charger***

The action of charger is described as follows : (Figure S-3)

1. When UPS connected to AC source, the CPU was active because the control power (+5V) was established.
2. The CPU turned on MAIN RELAY(RY01),AC power flow into Main Transformer.
3. Source for the charging circuit comes from the charger coil of the Main Transformer.
4. A traditional linear charging circuit is used for the UPS. Regulator U02(LM317) is used to adjust the battery charging voltage. The charging voltage can be set by changing the value of R28, R27, R29 and R62. The charger voltage is given by

$$R_p = (R_{27} * R_{29} * R_{62}) / (R_{27} * R_{29} + R_{29} * R_{62} + R_{62} * R_{27})$$

$$V_{OUT} = V_{REF} [1 + R_p / R_{28}] + I_A * R_p$$

$$I_A = 50 \mu A \text{ typical (LM317 A pin offset current)}$$

Where  $V_{REF} = 1.25$  Volts, which is the voltage drop between LM317 A pin and the Output pin. Thus the output voltage is

$$V_{OUT} = 1.25 \text{ Volts } [1 + 1050/100] + 50 * 10^{-6} * 1050 = 14.4275 \text{ Volts.}$$

( If T=25

$$\text{degree } R_p = (2000 * 4020 * 4990) / (2000 * 4020 + 4020 * 4990 + 4990 * 2000) = 1.05k \text{ ohm}$$

By considering the voltage drop of D13, the actual charging voltage is given by

$$14.4275 - 0.7 = 13.7275 V_{DC}$$

To prevent the charger current from over-charging and damaging the batteries, R31, Q09 and associated components are used as the current limiter.

The current limiter process is described below. The process repeats itself until the voltage for R31 drops to turn off Q09.

1. Q09(2N3906) turns on when current of R31 too large.
2. Q09 turns on Q08
3. A (Adjust ) pin of U02(LM317) is pulled down to 0 Volts when Q08 turns on.
4. As a result the output voltage of LM317 is pulled low from 13.7275V to approximately 1.25 V causing Q09( $V_E < V_B$ ) and Q08 to be turned off.
5. This cause the output voltage of LM317 return to 13.7275 V.

The CHG-OFF signal from CPU pin28 is used to turn off charger circuit at battery mode. The CPU turns on Q08 via sends a HI signal to base of Q08. As a result the charger be turned off.

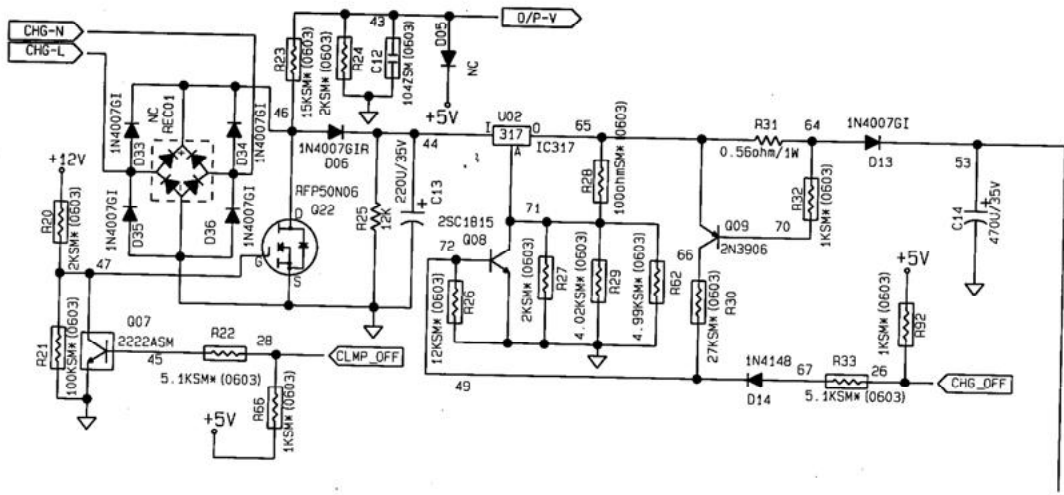


Figure S-2 Charger circuit

## ***E. Line And Zero-Crossing Detection***

Please refer Figure S-4

### 1) Line Detection

The input voltage is full-rectified. The signal passes through a voltage divider at R45 and R40/r47, feed into pin 8 of CPU. By monitoring this rectified sinusoidal voltage, the CPU can find the unnaturalness of commercial line. The CPU has two ways to judge line voltage loss

#### 1. Waveform detection:

If there is a rapid voltage drop occurs, the CPU is able to immediately detect it and transfer to battery mode. The waveform detection has a short response time.

#### 2. RMS value detection:

CPU calculates input RMS value every cycles. If RMS value is not in range of UPS specification for 3 cycles, UPS will transfer to battery mode. The RMS value detection has a more accurate voltage detection but it can not immediately sense a rapid voltage transition.

### 2) Zero Crossing Detection

Zero Crossing Detection is used to minimize the phase difference between the Inverter voltage and the input line voltage while UPS is switching from battery mode to line mode. If the phase difference is too large, it can create a large amount of energy which may damage the internal passive components such as relays.

The Zero Crossing signal is get by the following ways:

1. Use the voltage reduced from input line voltage (by resistor R49) to drive Q14(2222ASM).
2. The Zero Crossing signal comes from the collector of Q14, goes to the CPU pin 1. Refer to Figure W-2, Waveform measured from Q14 collector and line input.

When the line signal (reduced from input line) is applied to the base of Q14, the first half cycle (positive half-wave) makes  $V_{BE} < 0$  Volts, that turns off Q14. The second half cycle (negative half-wave) causes  $V_{BE} > 0.5$  Volts and turns on Q14.

When Q14 is off, the +5 Volts is charging C23. Hence the  $V_{CE}$  of Q14 changes from 0 to +5 Volts. As Q14 turns on, C23 discharges immediately. Thus, the line frequency can be detected by measuring the time interval between the first falling and second falling edge of  $V_{CE}$  of Q14. Also It is used by the CPU to determine when to switch from battery mode to line mode.

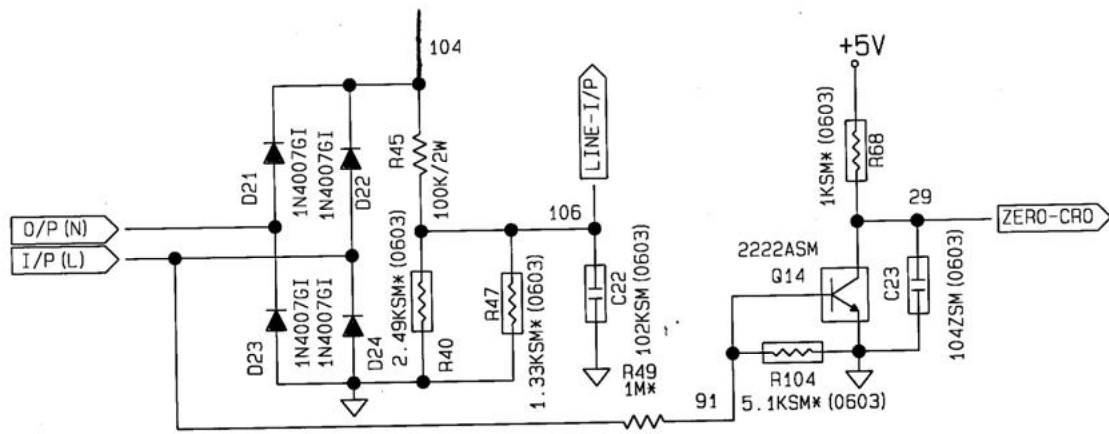
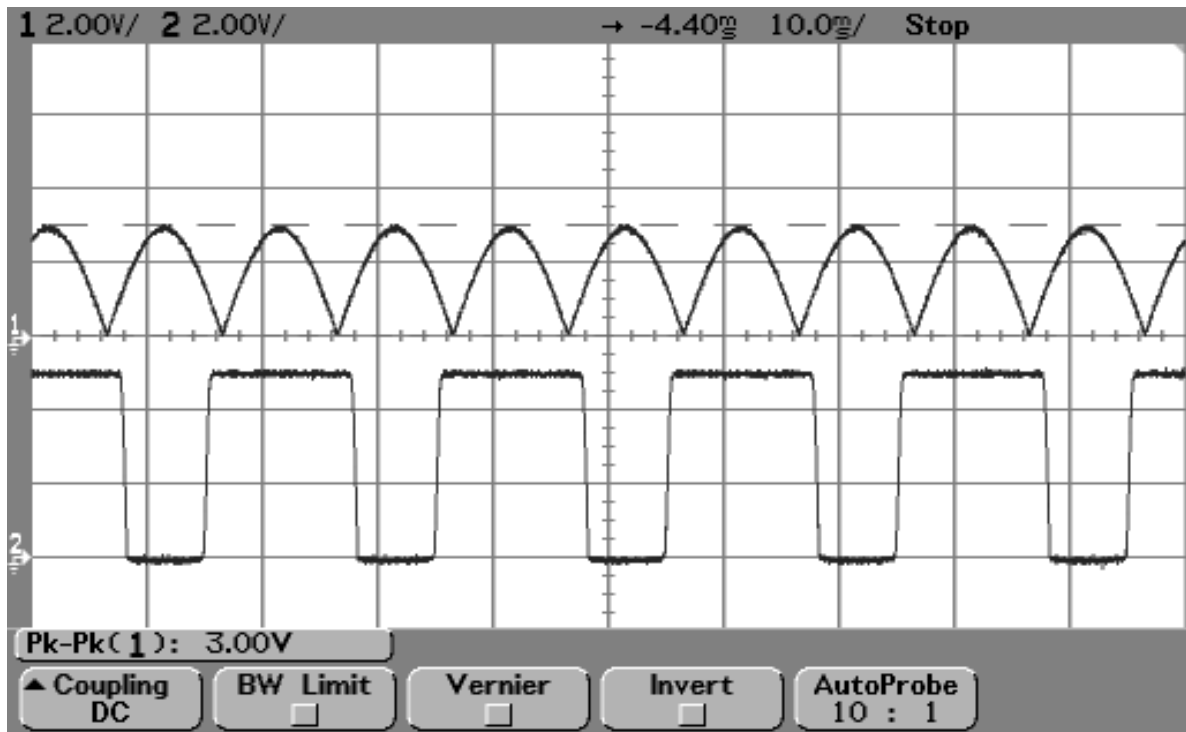


Figure S-3 Line and Zero Crossing Detecting circuit



**Figure W-2 Zero Crossing**

## ***F.* Inverter Operation**

The Inverter circuit (Figure S-5) and PWM control are only active under Battery mode.

The Inverter circuit of Blazer is based on a push-pull circuitry and its output is driven by transistors which is controlled by CPU.

Refer to the Inverter circuit diagram, the DS1(PWM signal ) and DS2 (PWM signal) signals are generated by CPU. Figure W-3 illustrates the waveforms of DS1 and DS2 while the system is at no load condition. the duty cycles of DS1 and DS2 signals are controlled by feedback signal of output voltage (please refer Charger circuit) to get a stable output.

The gates of MOSFETs are driven by transistors Q20,Q24 ,Q23,Q25 which are controlled by the DS1 and DS2 from CPU pin 11 and 26. Figure W-4 shows the collector waveforms for transistor pairs Q20,Q24 ,Q23,Q25 while the system is at no load condition.

C24 and R83 are used to eliminate the inverter transformer energy spikes due to the MOSFET transferring from ON to OFF. First, energy is stored on C27 (through D28 and D29) until the MOSFET are turned on. This reduces energy spikes which are generated during the MOSFET power-down period. It also makes sure that the  $V_{DS}$  voltage output are not to be over rated while MOSFET turning off.

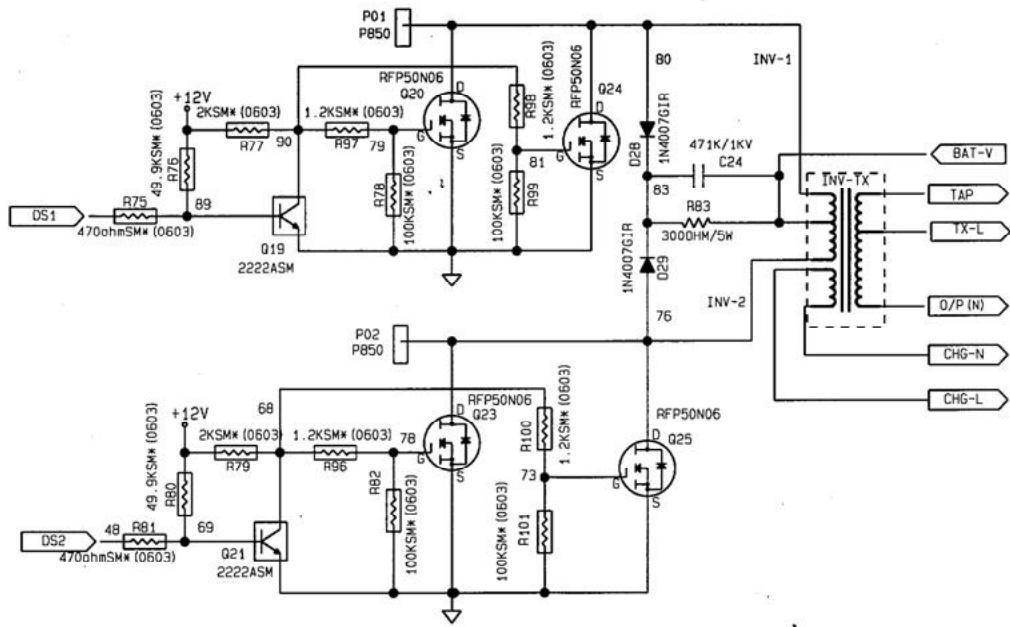
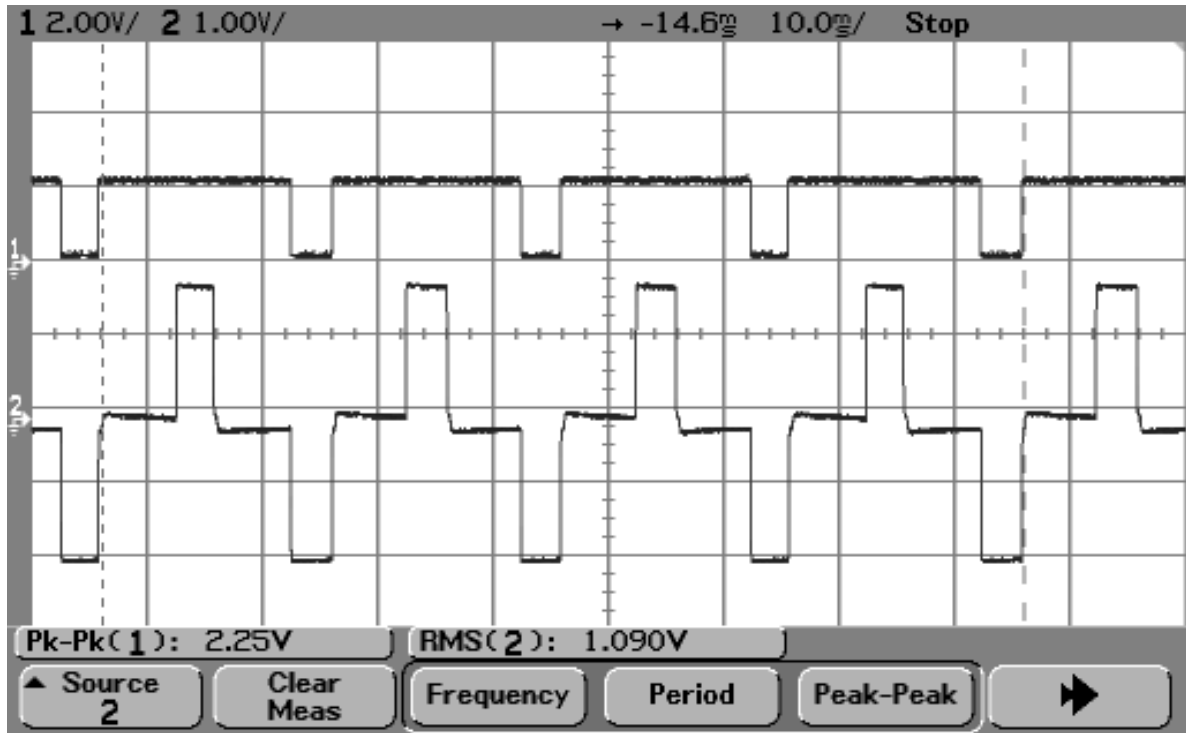


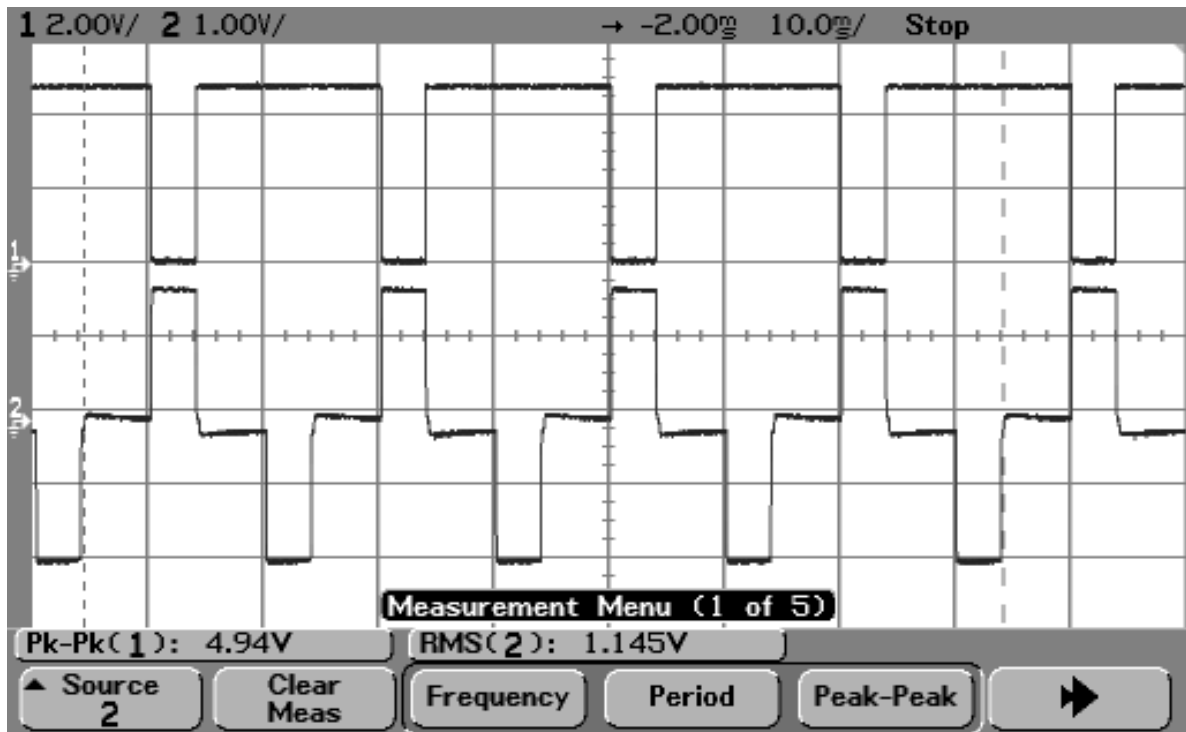
Figure S-4 Inverter circuit





CH1 : DS1  
CH2 : Output Voltage (1/200V)

**Figure W-3 Inverter Circuit (1)**



CH1 : DS2  
CH2 : Output Voltage (1/200)

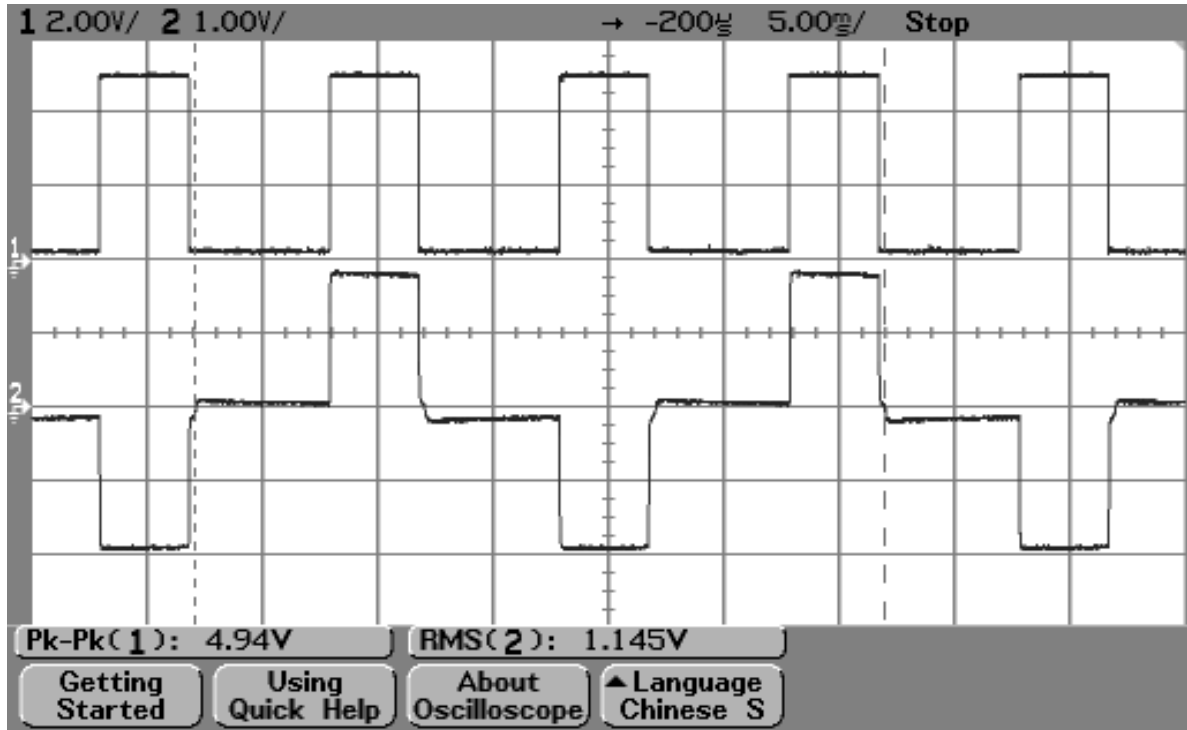
**Figure W-4 Inverter Circuit (2)**

## ***G* Active Clamp**

The purpose of Clamp circuitry (Figure S-5) is to pull down the output voltage while two sets of Inverter MOSFET are OFF. The Clamp circuitry is active during the period of zero Volt. of square wave at battery mode.

The Q22 is activated while the CLAMP-OFF signal (from pin 27 of CPU) goes to HI . If either one of the two MOSFET sets turn on (Q20/Q24 or Q023/Q25), the CLAMP-OFF signals will remain HI.

When UPS at line mode, the CLAMP-OFF signal remains HI. This turns on U07 to turn off Q22. At this time the Clamp circuitry is not active. When the CLAMP-OFF is LOW, U07 turns OFF and Q22 turns on. This pulls down output voltage to approximately zero at battery mode. Figure W-8 illustrates the relationship of the output waveforms and the CLAMP-OFF signal.



CH1 : CLAMP-OFF signal  
 CH2 : output voltage (1/200V)

**Figure W-5 Clamp circuit**

## ***H.* Microcontroller(CPU) Control Circuit**

The CPU is supplied by a 5 volts. power supply to pin 25 with ground pin at pin 24. An extra oscillation circuitry ,(consisting of C03,C04,and crystal XL1) is connected to pin 22 & 23. The Blazer series use a CPU type NEC  $\mu$ PD78F9116A and its oscillator frequency is 5.0 MHz.

The pin definition of Blazer CPU is (Figure S-6):

- pin 1 : ZERO-CRO control
- pin 2 : Buzzer control
- pin 3 : SW
- pin 4 : +5Volts
- pin 5 : load detection
- pin 6 : batteryvoltage detection
- pin 7 : O/P-V detection
- pin 8 : input line detection
- pin 9 : ground
- pin 10 : no use
- pin 11 : inverter PWM signal (DS1)
- pin 12 : boost relay control
- pin 13 : no use
- pin 14 : buck relay control
- pin 15 : mani relay control
- pin 16 : LED1 control
- pin 17 : shutdown
- pin 18 : model selection
- pin 19 : reset control
- pin20 : Vpp (via resistor R11 to ground)
- pin 21 : no use
- pin 22 : oscillation circuit
- pin 23 : oscillation circuit
- pin 24 : ground
- pin 25 : +5Volts
- pin 26 : inverter PWM signal (DS2)
- pin 27 : CLMP-OFF control
- pin 28 : charge off control
- pin 29 : TXD
- pin 30 : RXD

To prohibit the CPU from power-up in an unknown state, circuit consisting of Q02 and associated components, is implemented to force a hardware reset to the CPU whenever the power is turned on.

Figure S-7 is the relay circuit.The RY01 (main relay) is used for switching between line and battery modes. When the UPS is changing from battery to line mode, CPU pin 15 is set to HI to turn on Q03(2SC1815), this actives RY01. Alternatively, if the UPS is changing from line mode to battery mode, CPU pin 15 is set to LOW and turn off Q03. This causes RY01 to be OFF and return to its normal state.

R16,D02,C10 and Q04 are used to speed up the relay action, so the power loss time can be reduced to minimum. When UPS transfers to battery mode, C10 is charged by the +12 Volts. After the main relay makes contact, C10 provides instantaneous power to the relay coils. This increase the magnetic force and speeds up the relay to reduce the transfer time from battery mode to line mode. See Figure W-9 for voltage changes on C10,during line to battery mode transfers.

CPU pin 12 is used to the drive signal for RY02 (booster relay). When the input line source voltage falls below boost active threshold, pin 12 sends a high signal to turn on Q05 (2SC1815). This activates the RY02 ,and UPS goes into the Boost mode. When the input line voltage goes above the boost disactive threshold, the UPS returns to nominal mode by sends a LOW signal from pin 12. This forces RY02 to switch into its normal position( OFF). At battery mode, pin 12 is always set to LOW and RY02 is disable.

The same case as buck control, CPU pin 14 is used to the drive signal for RY03 (buck relay). When the input line source voltage rise above buck active threshold, pin 14 sends a high signal to turn on RY03. When the input line voltage goes below the buck disactive threshold, The UPS returns to nominal mode by output a LOW signal from pin 14.

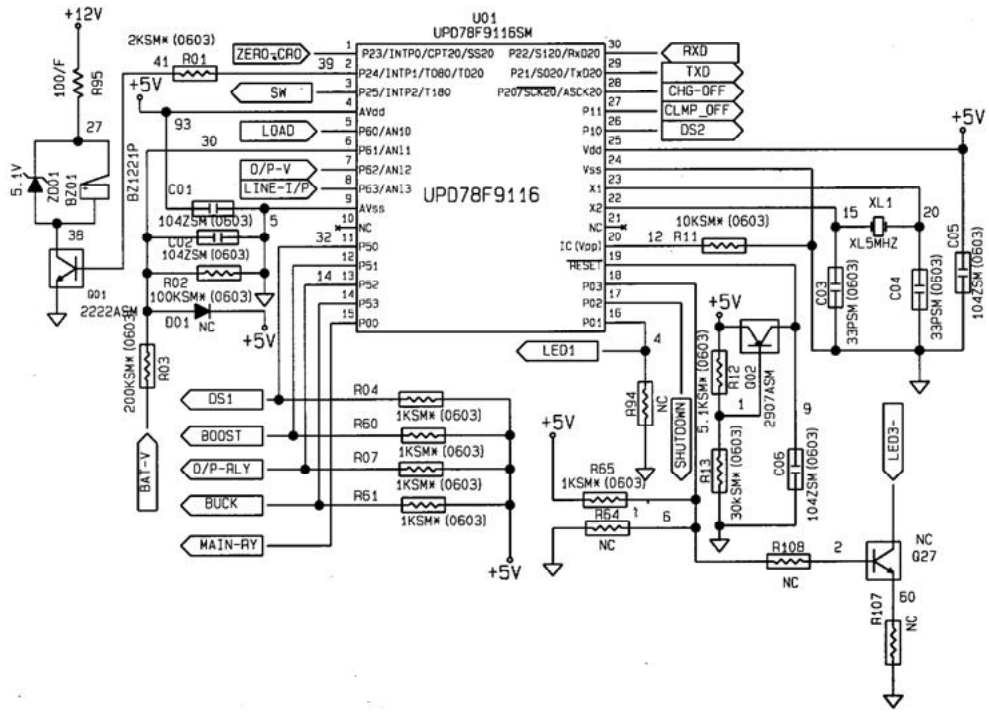


Figure S-5 CPU circuit

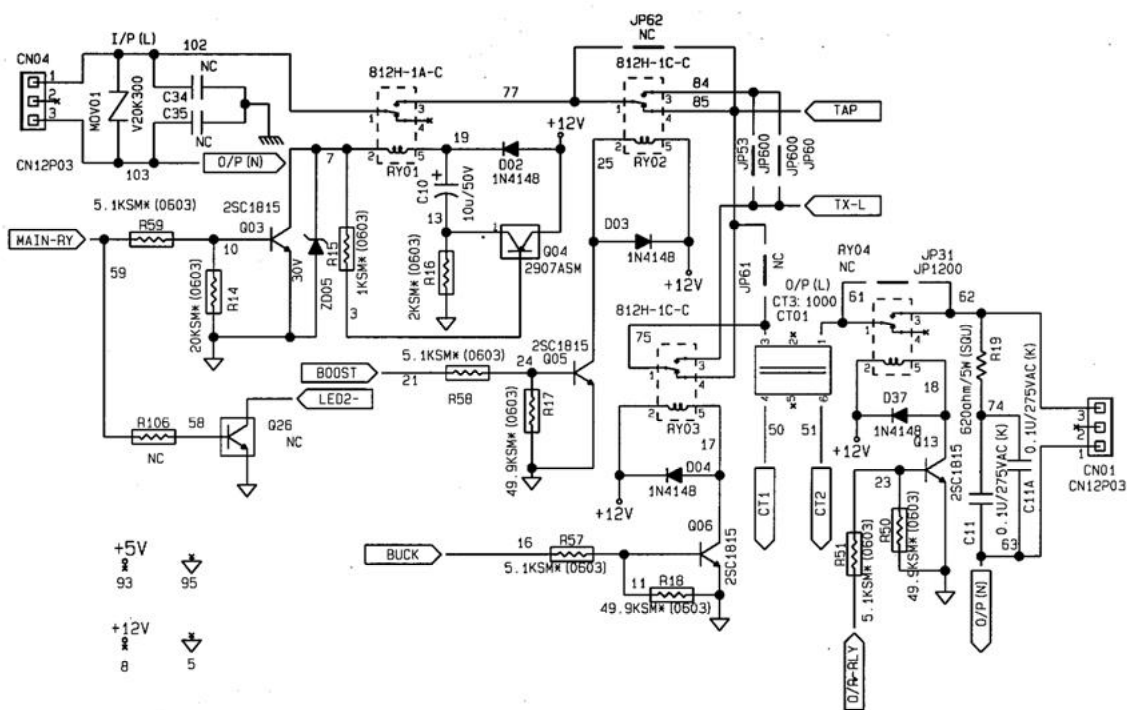
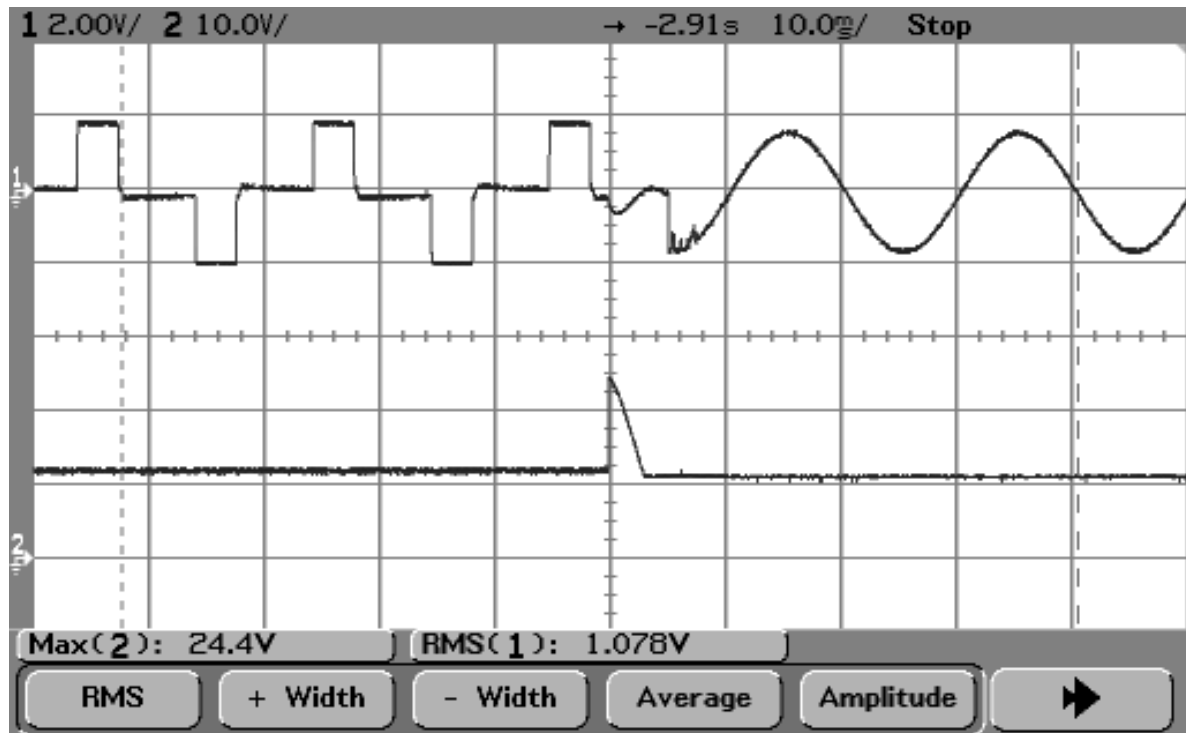


Figure S-6 Relay Circuit





CH1 : C10(+) à GND  
 CH2 : Output Voltage (1/200V)

**Figure W-6 Relay speed up capacitor**

## **/ Displays ,Audio alarm and control button**

### 1) Display (Figure S-8)

There are and one led on front panel .

While switch on, CPU sends a HI signal passes through LED to turn on LED.

### 2) Audio alarm

The buzzer is controlled by pin 2 of CPU. When CPU send a HI signal to buzzer from pin 2, buzzer is beeping. And CPU send LOW signal to stop buzzer.

### 3) Control button

ON/OFF Button : Push to turn on UPS, push again to turn off UPS  
(Please refer Chapter C for cold start & AC start)

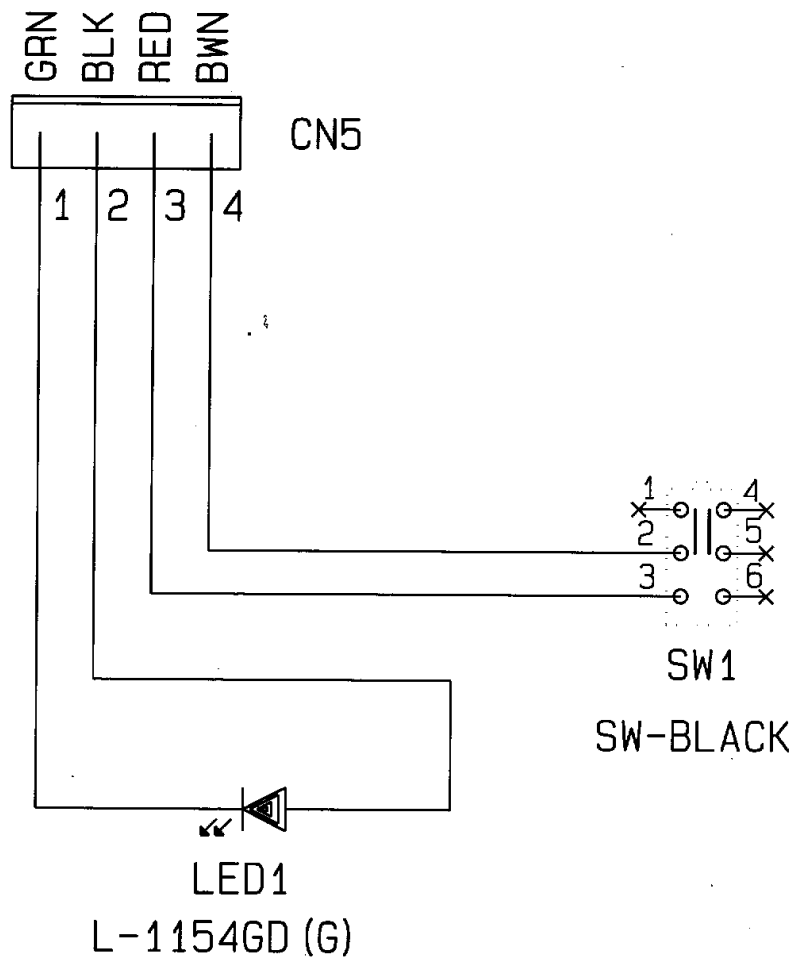


Figure S-7 Panel circuit

## **J. Load Detection Circuit**

The load detecting circuit is showed on Figure S-9. The output current is sensed by current transformer CT01. It decrease 1000 times of output current for CPU detection. The current signal decreased from CT01 pass through a full bridge rectifier and across R36 to get a voltage signal. After the voltage signal divided by R34,R102 to get 0~5 Volts. signal, the CPU can get output current value of UPS.

1. At line/booster/buck mode : The current value multiplies output voltage to get output VA value.
2. At battery mode : Because the power factor of square wave is approximately equal 1. The current value multiplies 120V(230V)output voltage to get output Watt value.

ZD03 is added for protection of rectifier. They can clamp voltage spike while there is a large current occurs.

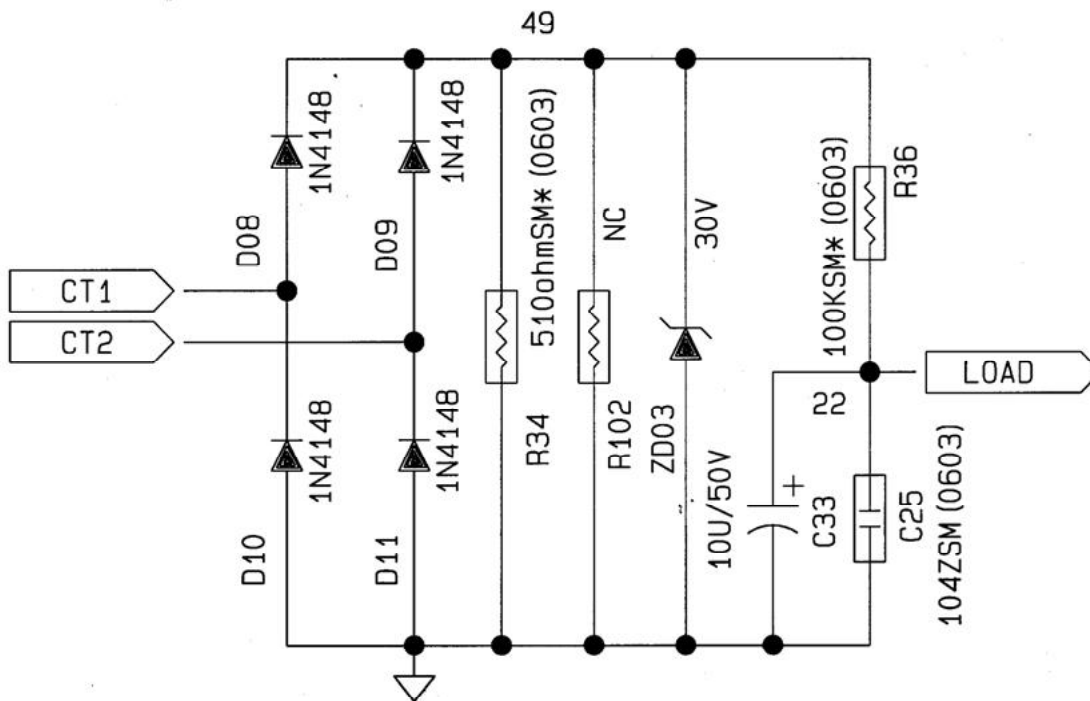


Figure S-8 Load Detecting Circuit

## K. Interface Circuit

The interface circuit (refer Figure S-6) consists three kinds of signal – relay signal, RS232 series communication, and plug & play for Windows 95.

The communication port is a D type 9 pin connector and its pin definition is :

- pin1 : N.C
- pin2 : RS232 transmit
- pin3 : RS232 receive
- pin4 : connect with pin 6
- pin5 : common
- pin6 : connect with pin 4
- pin7 : connect PC
- pin8 : N.C
- pin9 : N.C.

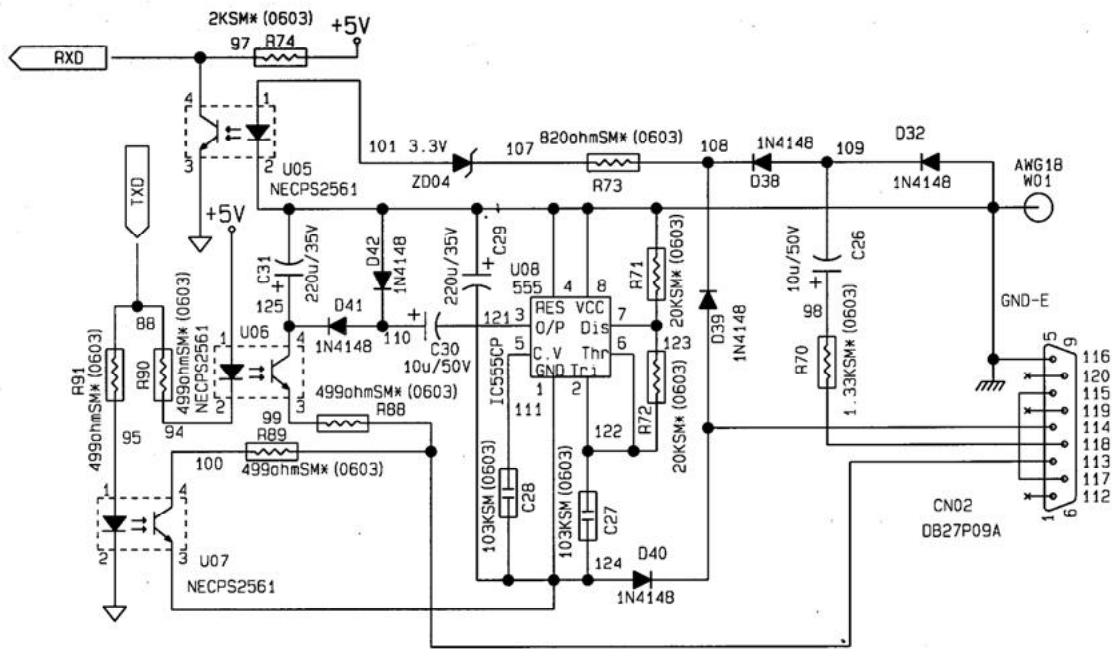


Figure S-9 RS232 circuit

## ***L.* Troubleshooting**

### **WARNING**

1. Troubleshooting can be done by qualified engineer or technician only.
2. Use isolated AC source for your oscilloscope to prevent floating voltage problem between UPS chassis ground and system reference ground.
3. Before opening the cover, turn off the main switch and unplug the input power cord.
4. Because of some energy will remain in the DC capacitors, wait for at least 5 minutes after turning off the UPS and disconnecting the power cord before open its cover.
5. Plug in the input power cord before you reconnect the connectors of battery to prevent unwanted sparks.

Please depend on the following steps when you want to repair a problematic unit :

1. Visual inspection  
This is the first step to check the UPS after opening its cover. Be sure to do it, it can help you to identify with most problems. Major items that should be checked are listed below :
  - (1) Are there any connectors or terminals loosen ?
  - (2) Are there any components burn-out or decolored ?  
Especially the power components on the heatsink.
  - (3) Are there any capacitors broken or leakage?  
Check all the components listed above and replace which is abnormal.
2. Troubleshooting flowchart  
To prevent from damaging yourself and the UPS, be sure to obey the sequences of flowchart listed below.

## 2.1 Battery mode examination (please refer flowchart)

### Procedure :

- 1 .(1) Replace batteries by DC power supply and turn on it.  
(2)Check if there is current limit phenomenon for DC power supply.
- 2 One or more MOSFETs (Q20,Q23~25) is D-S short. Check and replace it. If MOSFETs have been replaced once, replace the PCB.
3. Check if both buzzer beeps and LED flash for once.
4. Check if +5V on CPU pin 25 is normal.
5. Check if clock signals on CPU pin 22 and 23 are correct.
6. Replace the CPU. But if the CPU has been replaced once, replace the PCB.
7. Replace abnormal crystal XL1.
8. Check if DC fuse F01 (and F02) are open.
9. Replace abnormal DC fuse.
10. Check if there is a battery voltage on regulator 7805 input.
11. Check Q11 (MPS2907A) ,Q12(2222ASM) and replace them if abnormal.
12. Check there is +12V on 7805 input.
13. Replace abnormal Q11.
14. Check there is +5V on U03 (7805)
15. Replace abnormal 7805.
16. Replace PCB
17. Check if buzzer beeps and LED extinguished.
18. Check if battery voltage is correct.
19. Replace abnormal batteries.
20. Check D17 if it is open.
21. Replace abnormal Diode.
22. Replace PCB.
23. Buzzer beeps and LEDs flash .
24. Check if fault LED lights and buzzer beeps continuously.
25. Check if CPU is shorted.
26. Replace abnormal CPU.
27. Check if Q22 (RFP50N06) is shorted.
28. Replace abnormal RFP50N06.
29. Check if Q07 is failed.
30. Replace abnormal Q07.
31. Replace PCB.

## 2.2 Line mode examination (please refer flowchart)

If battery mode procedure are OK then check the following procedure.:

Procedure :

- 1 (1)Plug in input power cord at right voltage range.  
(2)Check if main relay RY01 are active (230/240V models).  
(3)Check UPS if remains at line mode (for 120V models).
2. Check if input fuse is open.
3. Replace fuse.
4. (1)Replace main relay(230/240V models).  
(2)Turn to procedure (6) (120V models)
5. Check UPS if remains at line mode.
6. Check if full bridge rectifier is short.
7. Replace abnormal diode
8. Check Q14 (2222ASM collector) if there is zero crossing signal.
9. Replace abnormal Q14.
10. Replace PCB.
11. Check if buzzer beeps continuously and fault LED lights.
12. Check if main relay (RY01) is bad.
13. Replace abnormal main relay (RY01).
14. Replace PCB.



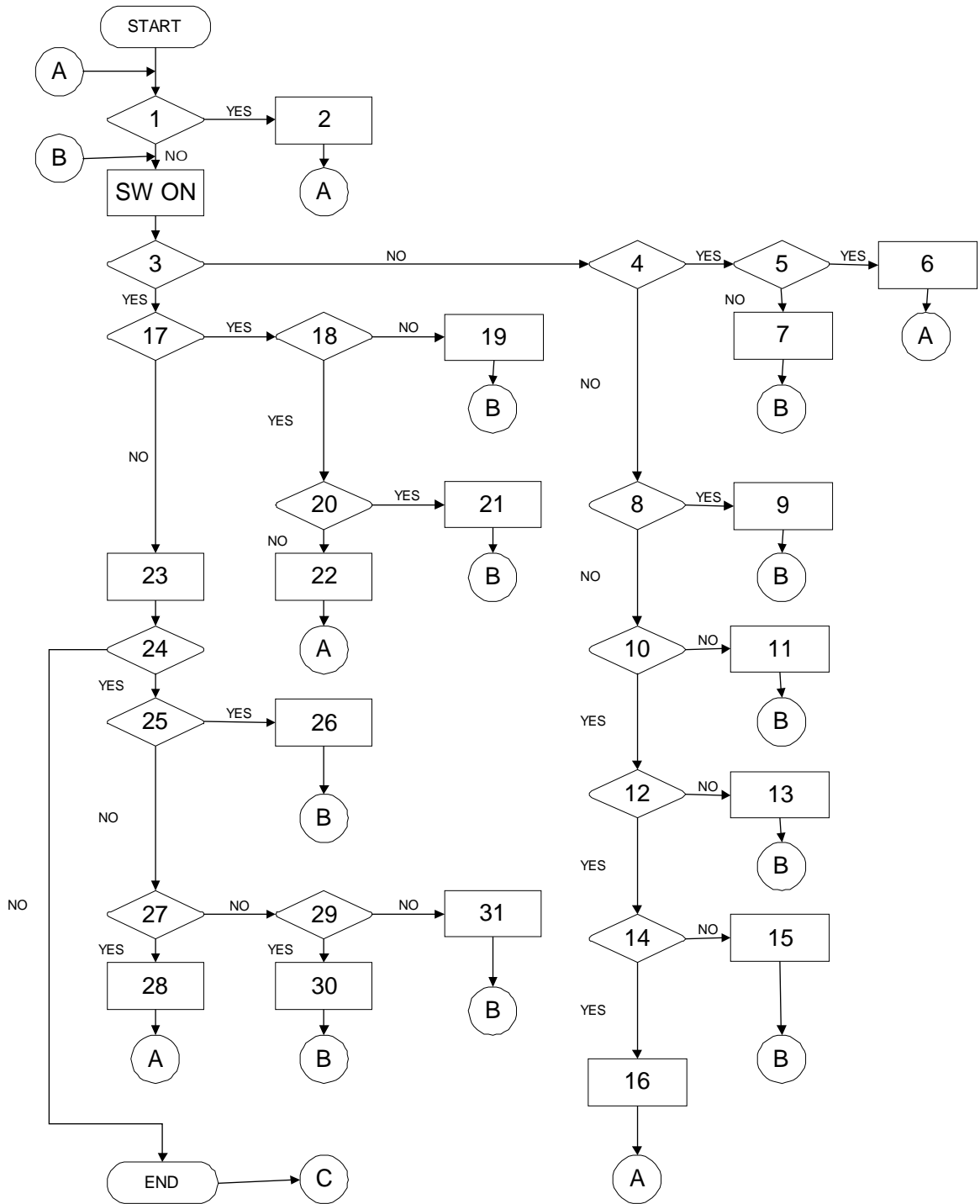


Figure W-7 Battery mode examination flowchart

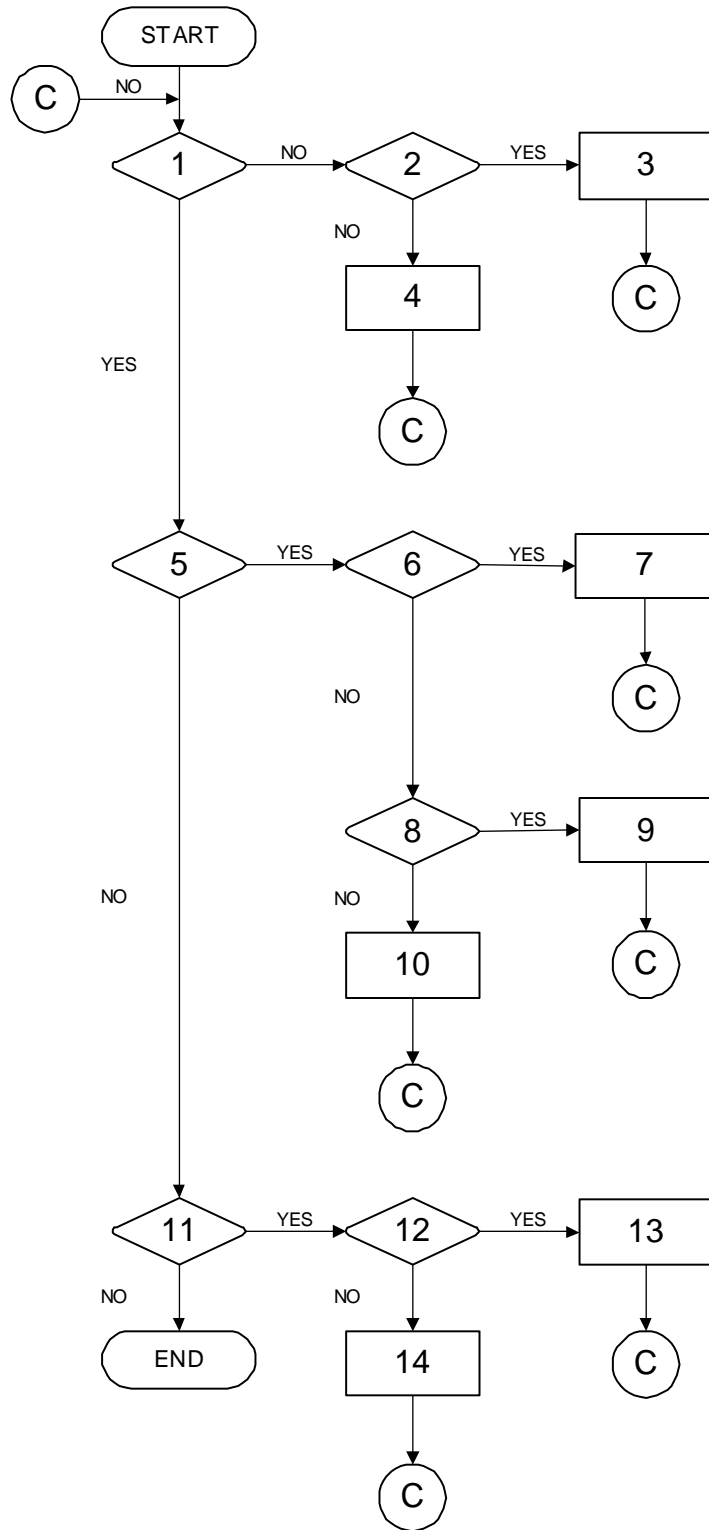


Figure W-8 Line mode examination flowchart