

A

B

C

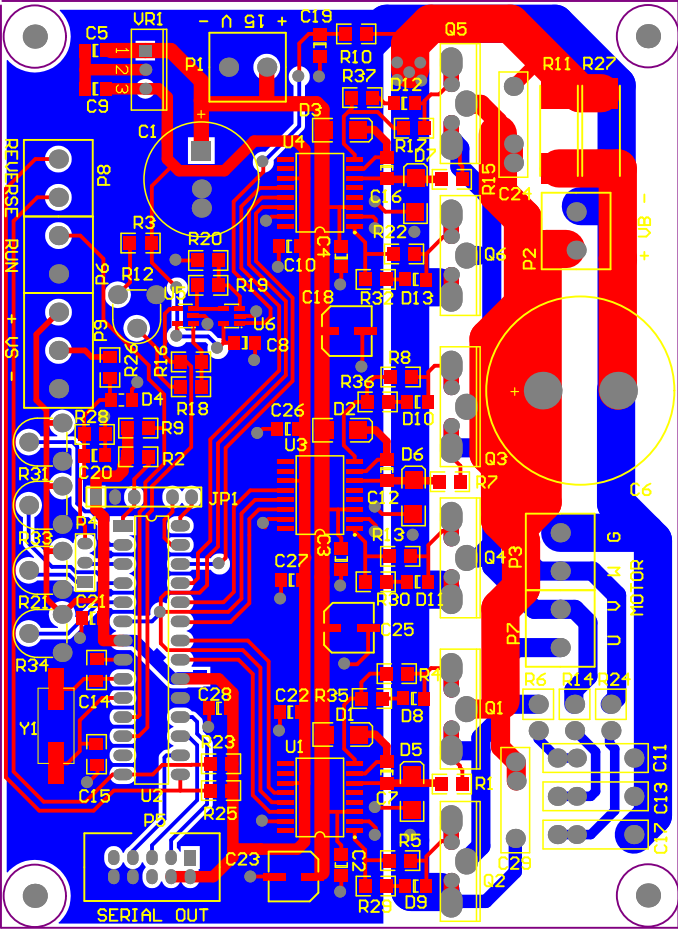
D

A

B

C

D



Designator	Footprint	Quantity	Value
C1	RB7.6-15	1	1000uF
C2, C3, C4, C5, C8, C10, C21, C27, C30	C1206	9	100nF
C6	470uF200V	1	470uF 200V
C7, C12, C16	C1206	3	2.2uF
C9, C20, C22, C26, C28, C31	C1206	6	10 uF
C11, C13, C17, C24, C29	RAD-0.4	5	100 nF
C14, C15	C3216-1206	2	15pF
C18, C23, C25	NACZ63x8	3	10 uF
C19	C1206	1	10nF
D1, D2, D3, D5, D6, D7	SMB	6	ER 1G
D4	CR3216-1206	1	5.1V
D8, D9, D10, D11, D12, D13	CD3216-1206	6	LL4148
JP1	SIP6P	1	Tuskesor 6x1
P1, P6, P8	AKZ250_2	3	AKZ250-2
P2, P3, P7	AKZ250_2	3	AKZ350-2
P4	HDR1X3	1	Tuskesor + jumper
P5	MLW10G-1_6	1	MLW10G
P9	AKZ250/3	1	AKZ250-3
Q1, Q2, Q3, Q4, Q5, Q6	TO-247_220	6	IRFP260
R1, R7	C3216-1206	2	5.1
R2, R9, R23, R25	C3216-1206	4	10k
R3	C3216-1206	1	0
R4, R5, R8, R13, R1 R22	C3216-1206	6	47
R6, R14, R24	AXIAL-0.8_R	3	3K3 2W
R10, R20	C3216-1206	2	1K
R11, R27	RWC5020	2	0,1
R12, R21, R31, R33, R34	PT6	5	5K
R15	C3216-1206	1	5.1
R16	C3216-1206	1	1M
R18	C3216-1206	1	22K
R19	C3216-1206	1	9.1K
R26, R28	C3216-1206	2	4.7K
R29, R30, R32, R35, R36, R37	C3216-1206	6	10
U1, U3, U4	SO-G16/ D10.4	3	IR2112
U2	PDIP300-28	1	PIC18F2431-I/ SP
U5, U6	MA05B	2	LM321M5
VR1	SFM-T3/ A4.7V	1	7805
Y1	Q36M	1	10MHz/ SMD