

SERVICE GUIDE

KYE SYSTEM CORP



Revision History

Version	Date	Change
1.0	04/20/2010	

Table of Contents

Service Guide

SW- 5.1 1005

<div style="border: 1px solid black; height: 30px; width: 100%;"></div>	
Revision History	2
Table of contents	3
Getting Start	4
Conventions Used in this Guide.....	4
Safety Precautions.....	4
Chapter 1. How to Handle Defective Returns	5
1.2 Problem.....	6
1.2.1 No power, LED (indicator) unlighted.....	7
1.2.2 No sound.....	8
1.2.3 Front channel no sound (including either FR or FL no sound).....	9
1.2.4 Rear channel no sound (including either RR or RL no sound).....	10
1.2.5 Center no sound.....	11
1.2.6 Woofer no sound.....	12
1.2.7 Input no sound.....	13
1.2.8 Noise.....	14
1.2.9 LED indicators abnormal.....	15
1.2.10 Knob in the front panel no use	16
Chapter 2. Specification	17
Satellite.....	17
Woofer.....	18
Chapter 3. Block diagram	19
Chapter 4. Exploded view	20
Subwoofer.....	20
Satellite	21
Chapter 5. Part list	22
Woofer.....	22
Satellite.....	23
Chapter 6 Important notes	24
Chapter 7 Circuit diagram	25
SW- 5.1 main PCB.....	25
SW- 5.1 VOL PCB.....	25

Getting Started

Conventions Used in the Guide

Pay Special Attention: Instructions that are important to remember and may prevent mistakes.

Caution: Information that, if not followed, may result in damage to the product.

Safety Precautions

The following precautions should be observed in handling the speaker described in this guide:

Place the speakers on a flat, level and stable surface.

Do not place the speakers in environments subject to mist, smoke, vibration, excessive dust, salty or greasy air, or other corrosive gases and fumes.

Do not drop or jolt the speakers.

Do not allow anything to drop into the subwoofer case through its ventilator, as it could result in fatal electric shock or fire.

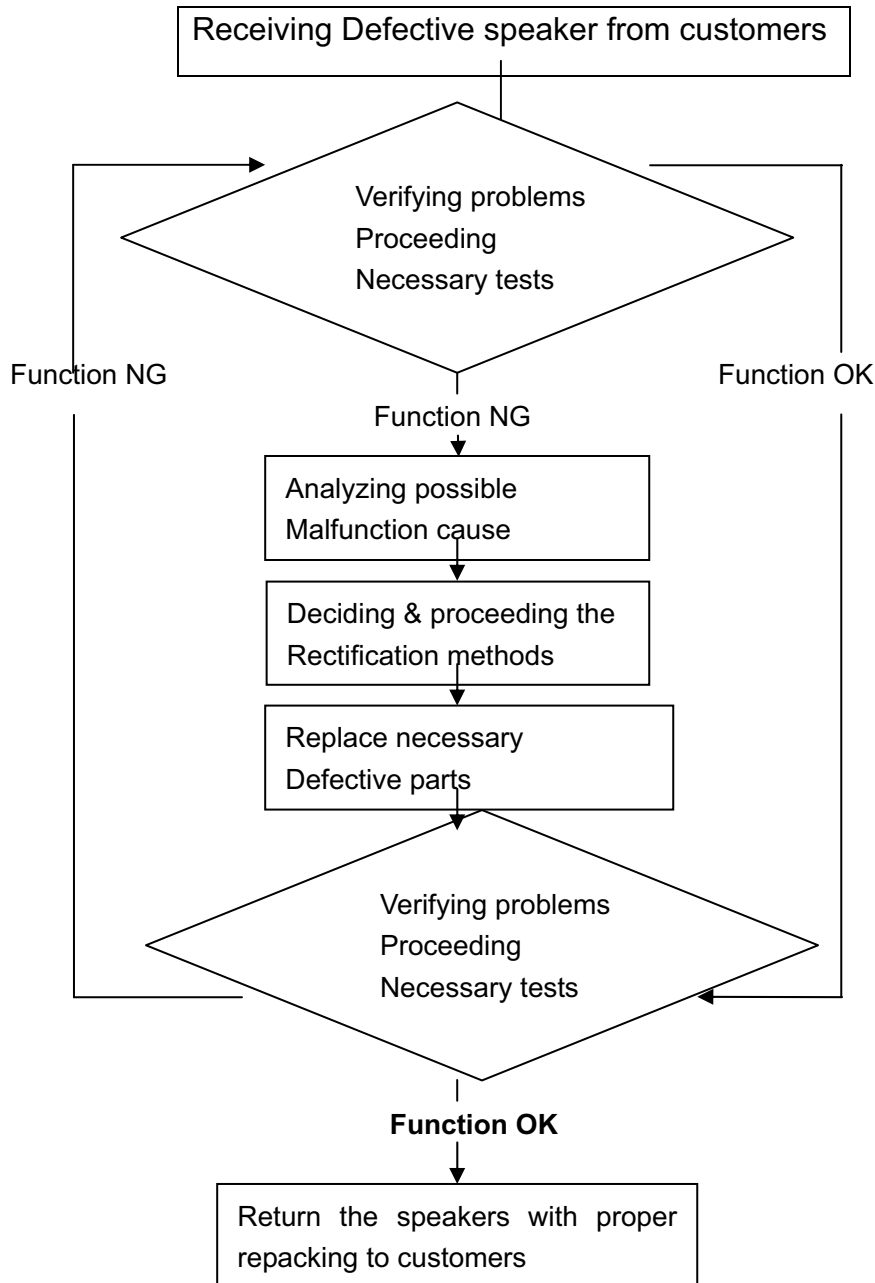
Place the unit far enough from other equipments for good heat dissipation.

Do not perform any maintenance with wet hand.

Prevent foreign substance, such as water, other liquids or chemical, from entering the speakers while performing maintenance procedures on the speakers.

Chapter 1. How to Handle Defective Returns

1.1 Overview



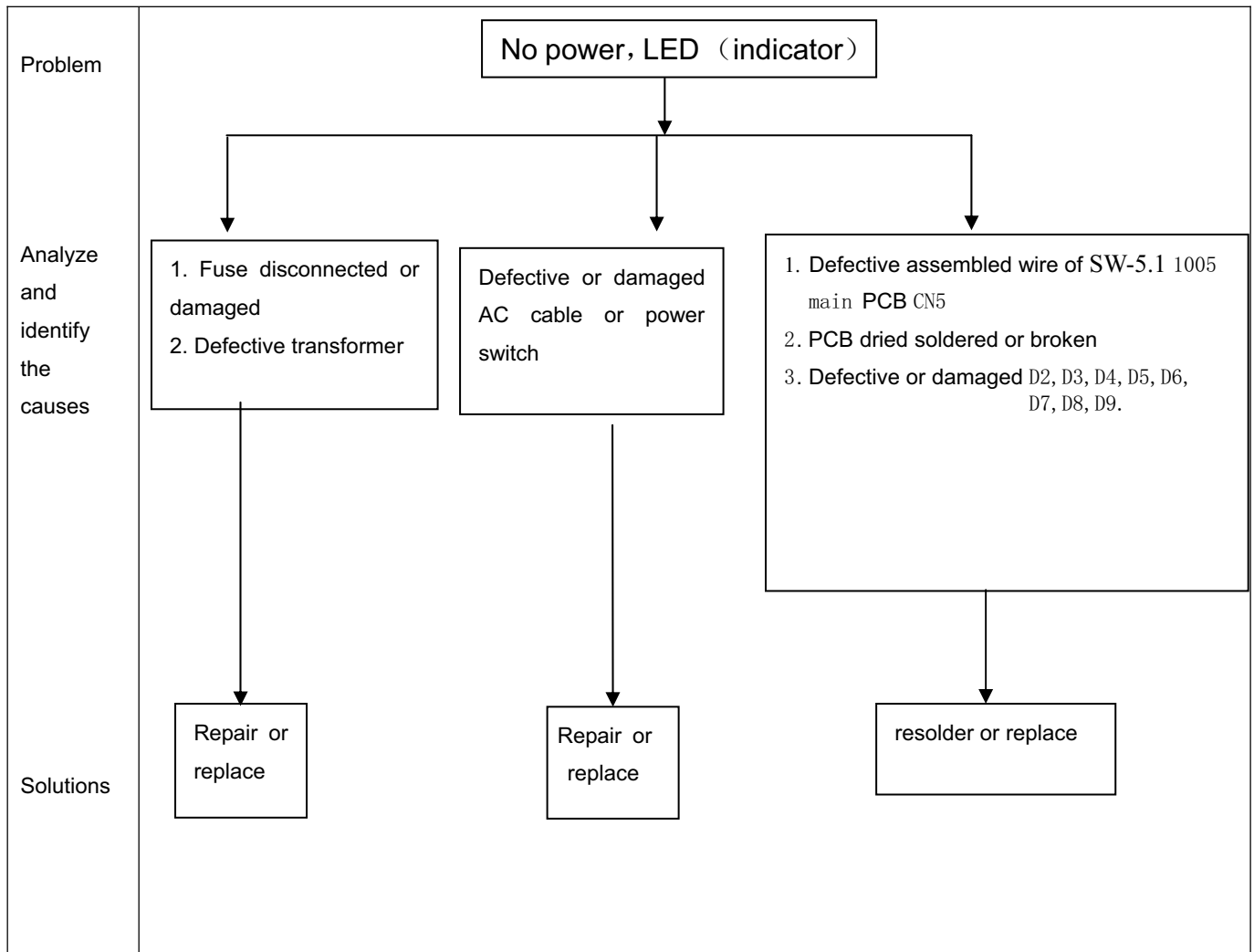
1.2 Problems

Item	<u>Problem Description</u>
1.2.1	No power, LED (indicator)
1.2.2	No sound
1.2.3	Front channel no sound (including either FR or FL no sound)
1.2.4	Rear channel no sound (including either RR or RL no sound)
1.2.5	Center no sound
1.2.6	Woofers no sound
1.2.7	Input no sound
1.2.8	Noise
1.2.9	LED indicators abnormal
1.2.10	Knob in the front panel no use

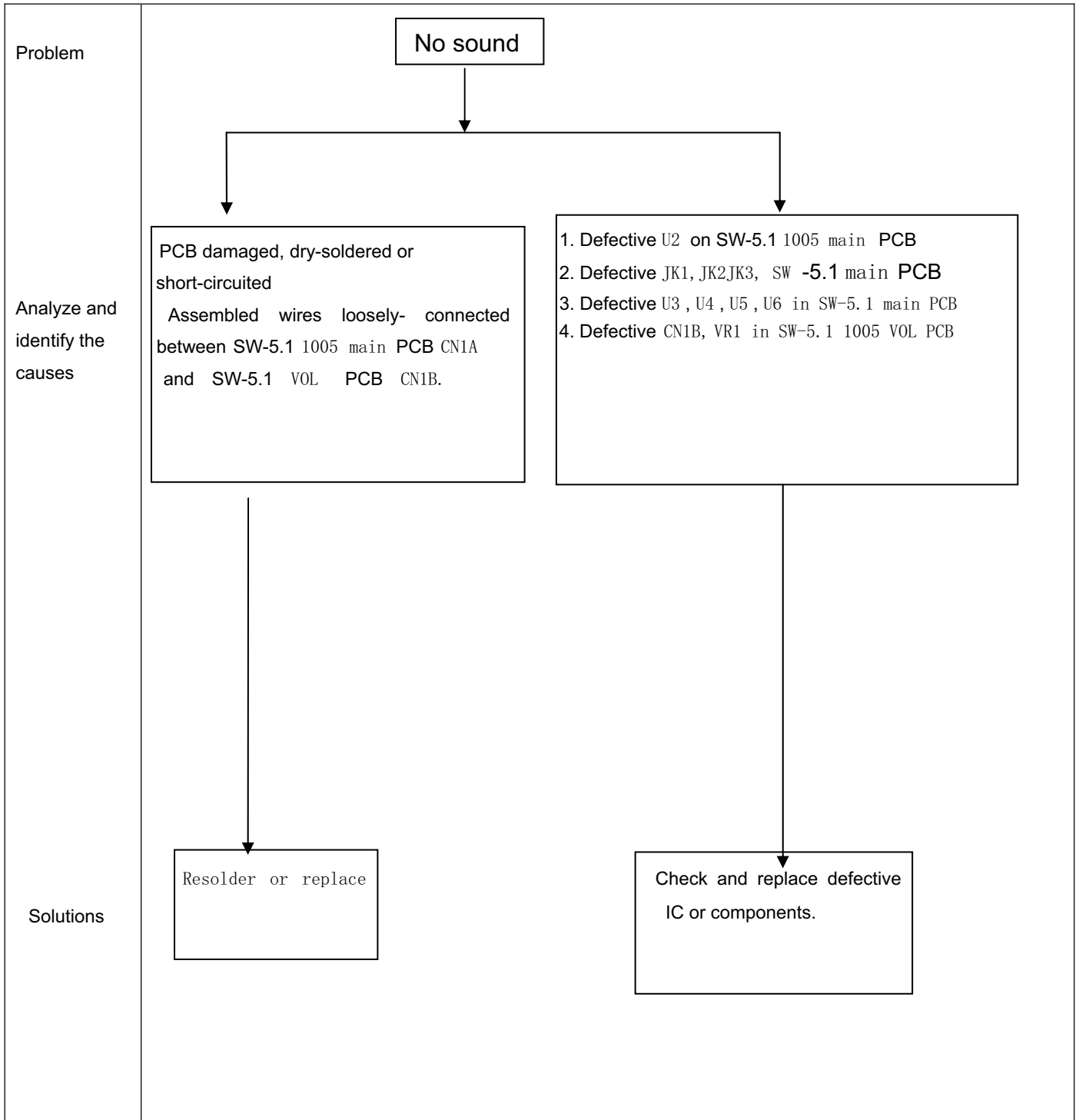
*Attention

Please follow the numbered sequence marked within parenthesis given in individual Flow chat in that this is the best-recommended sequence to rectify the problems.

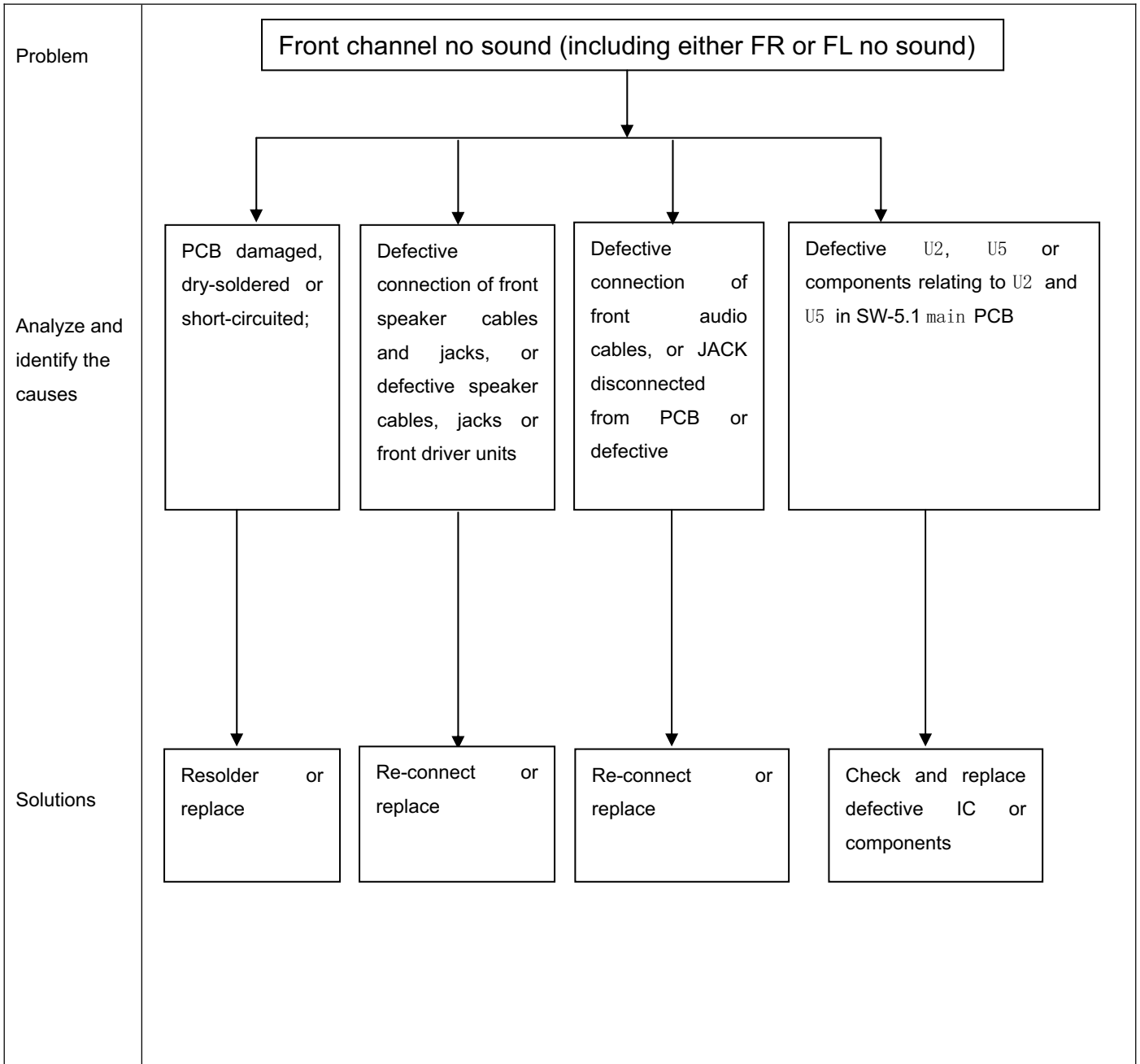
1.2.1 No power, LED (indicator) unlighted



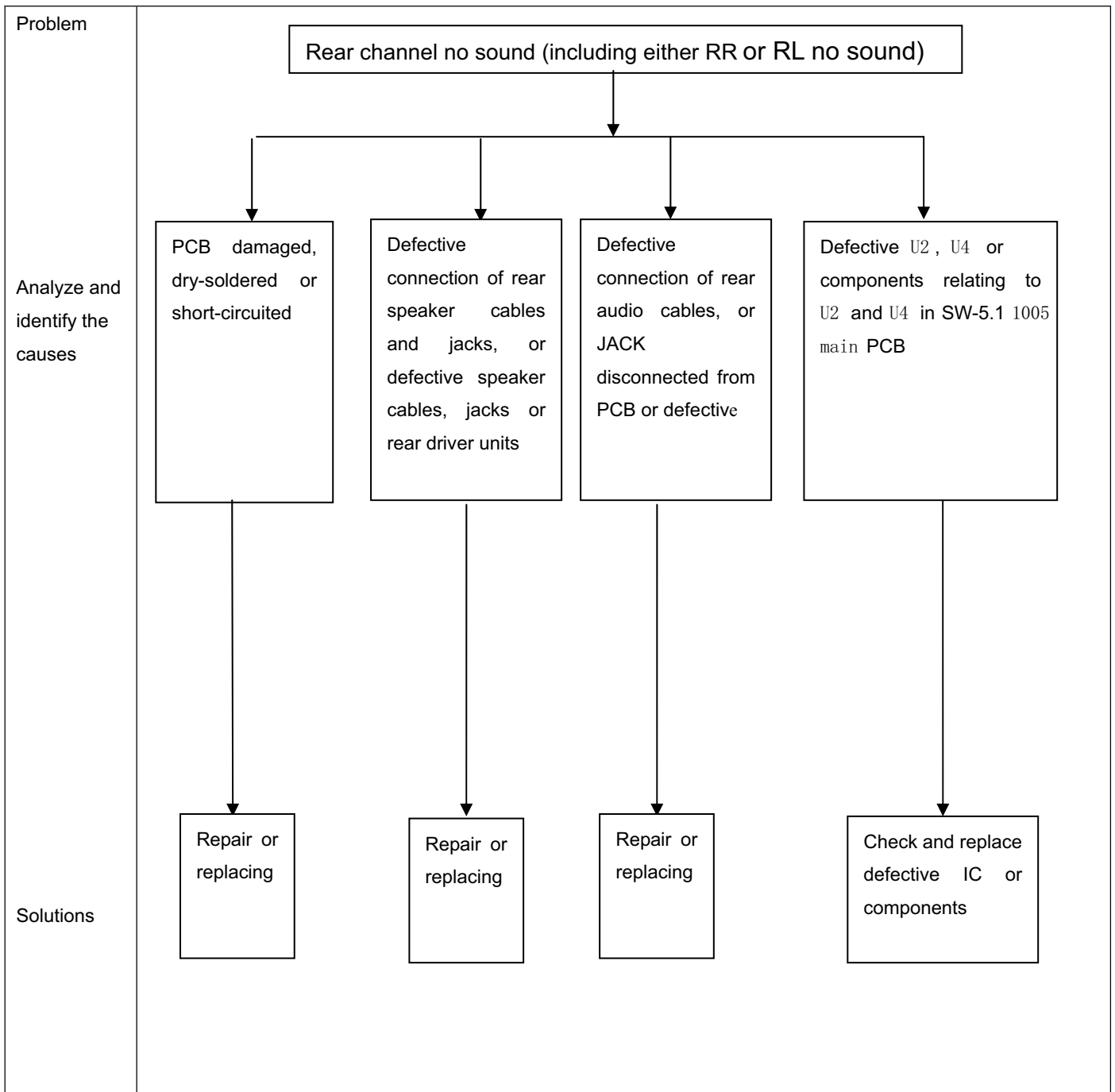
1.2.2 no sound



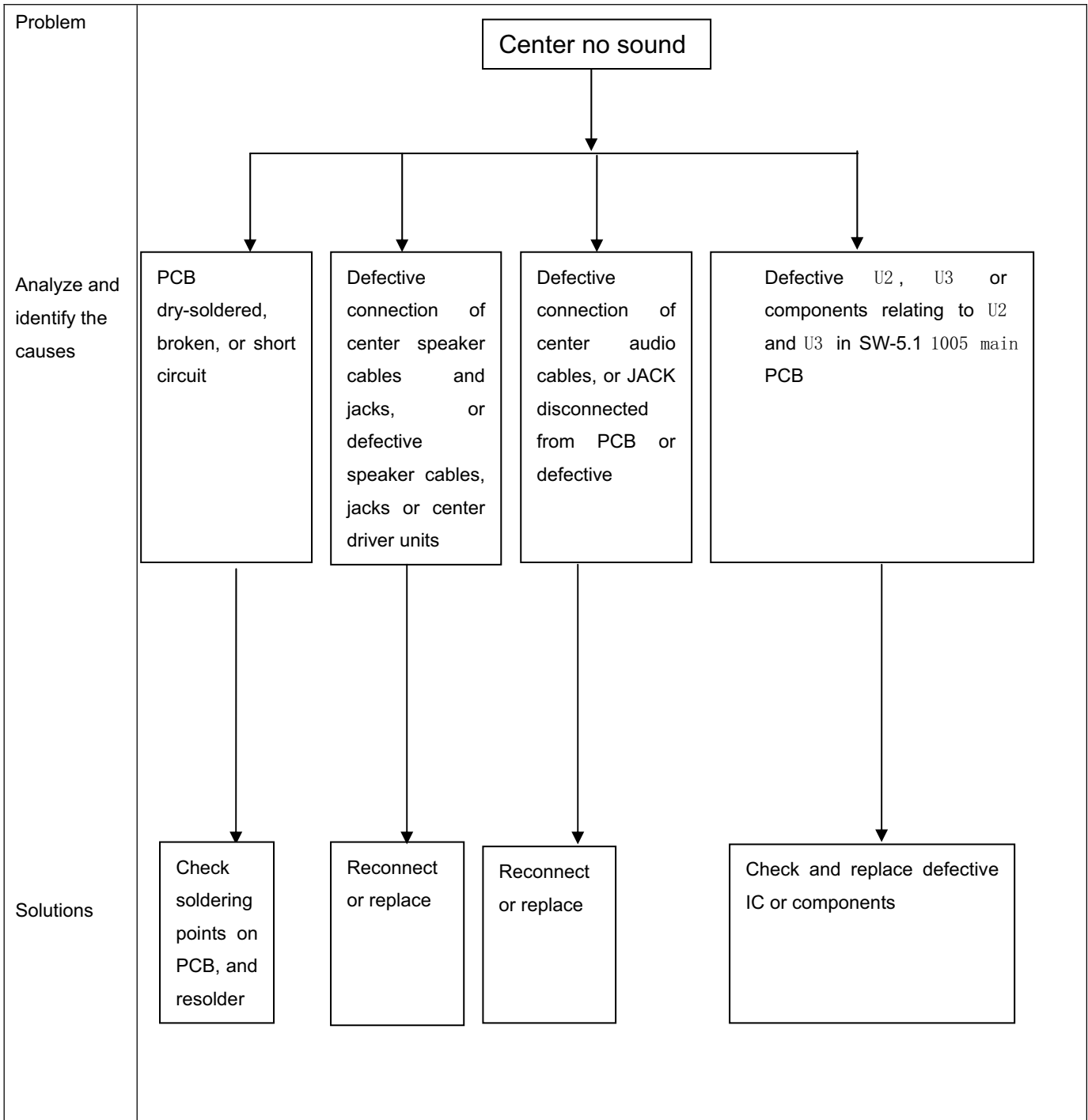
1.2.3 Front channel no sound (including either FR or FL no sound)



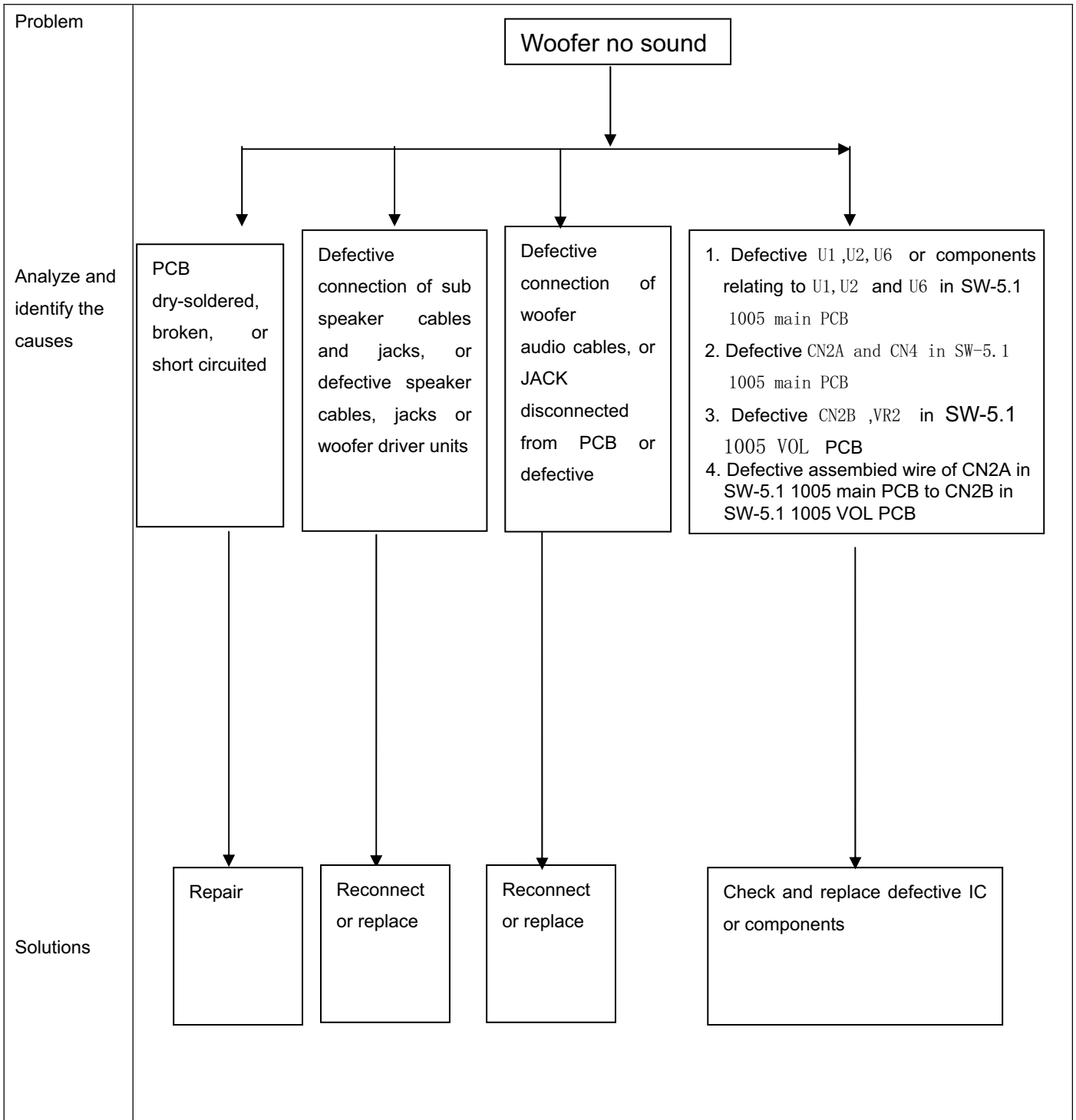
1.2.4 Rear channel no sound (including either RR or RL no sound)



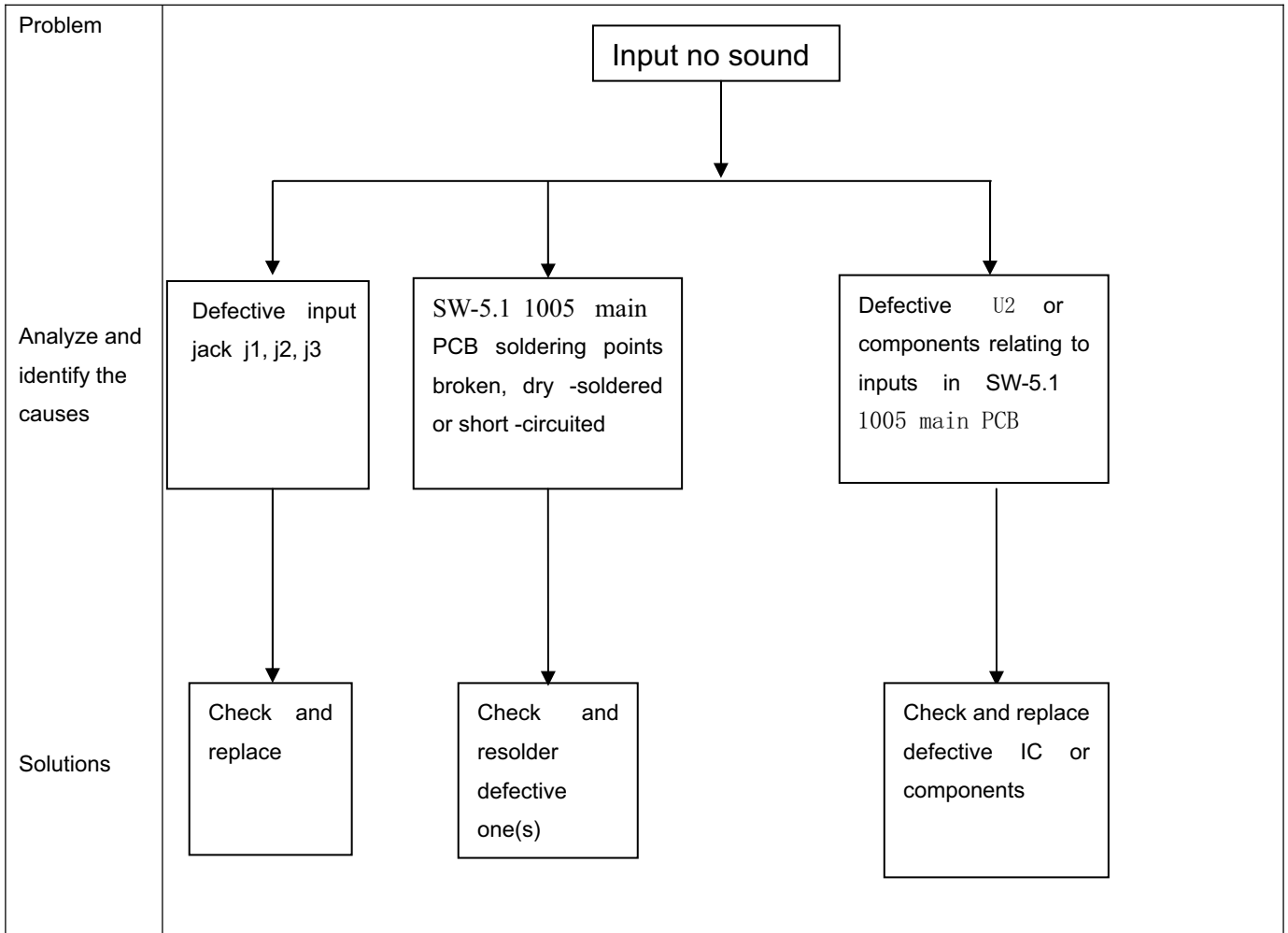
1.2.5 Center no sound



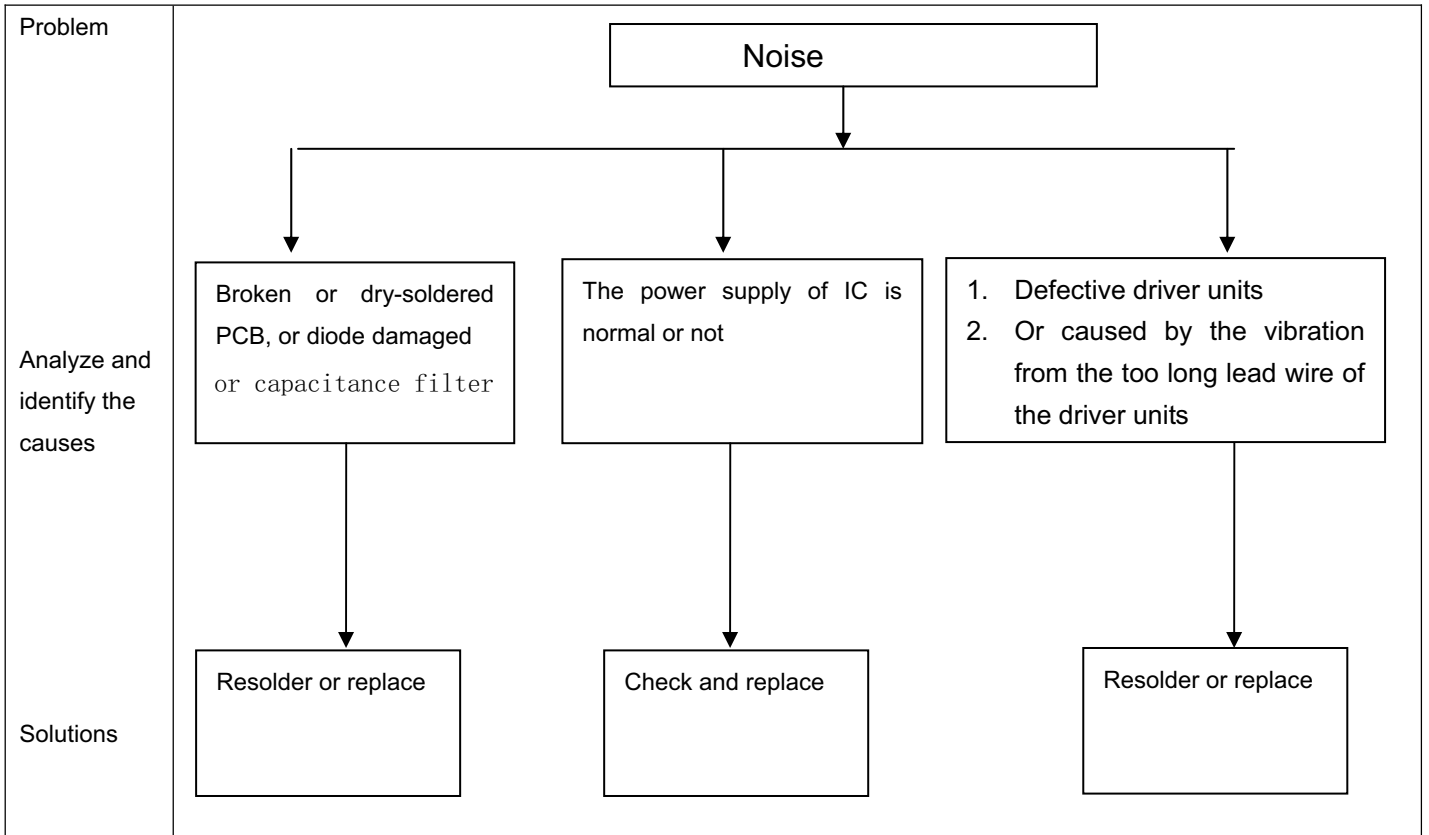
1.2.6 Woofer no sound



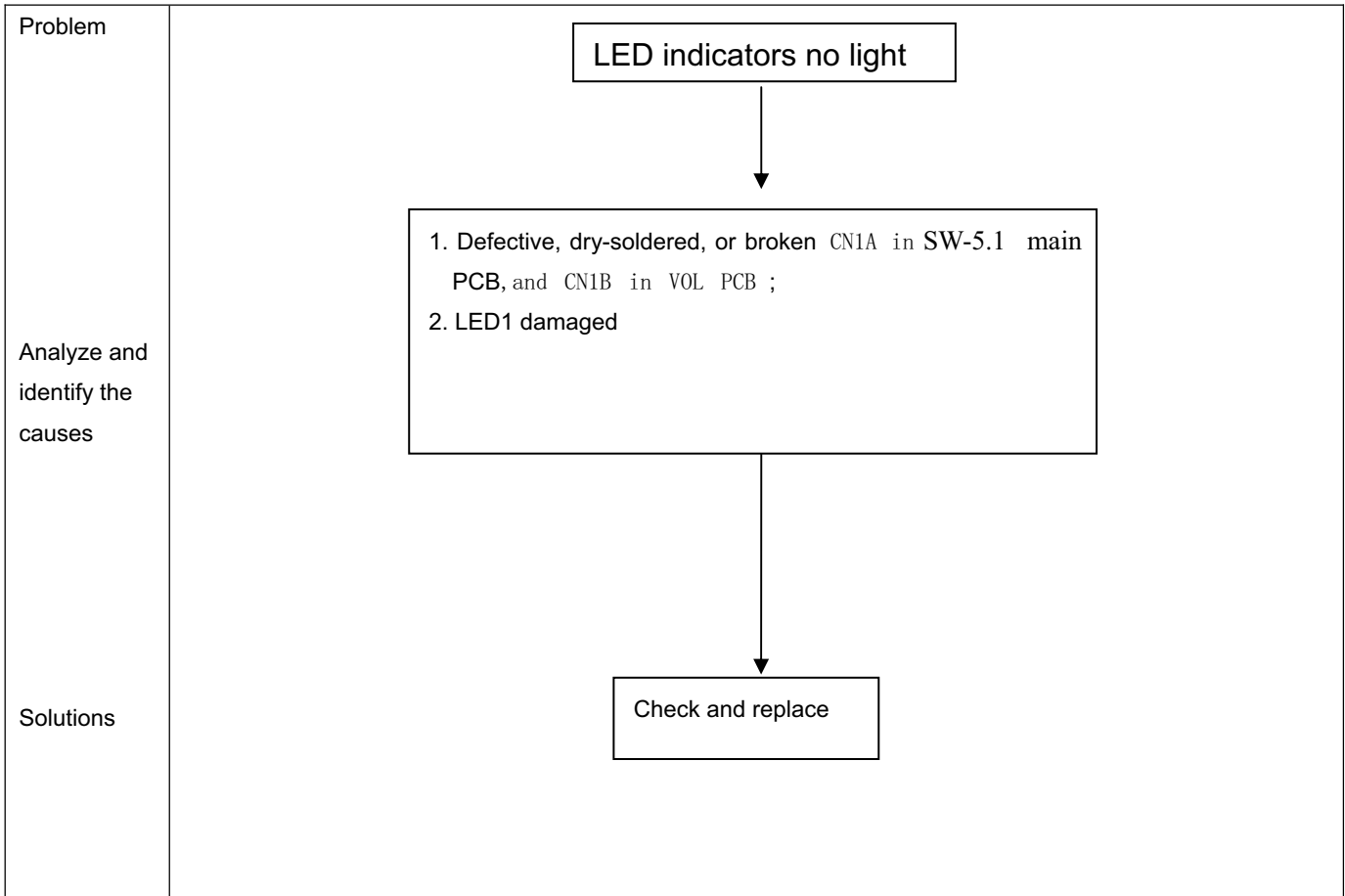
1.2.7 Input no sound



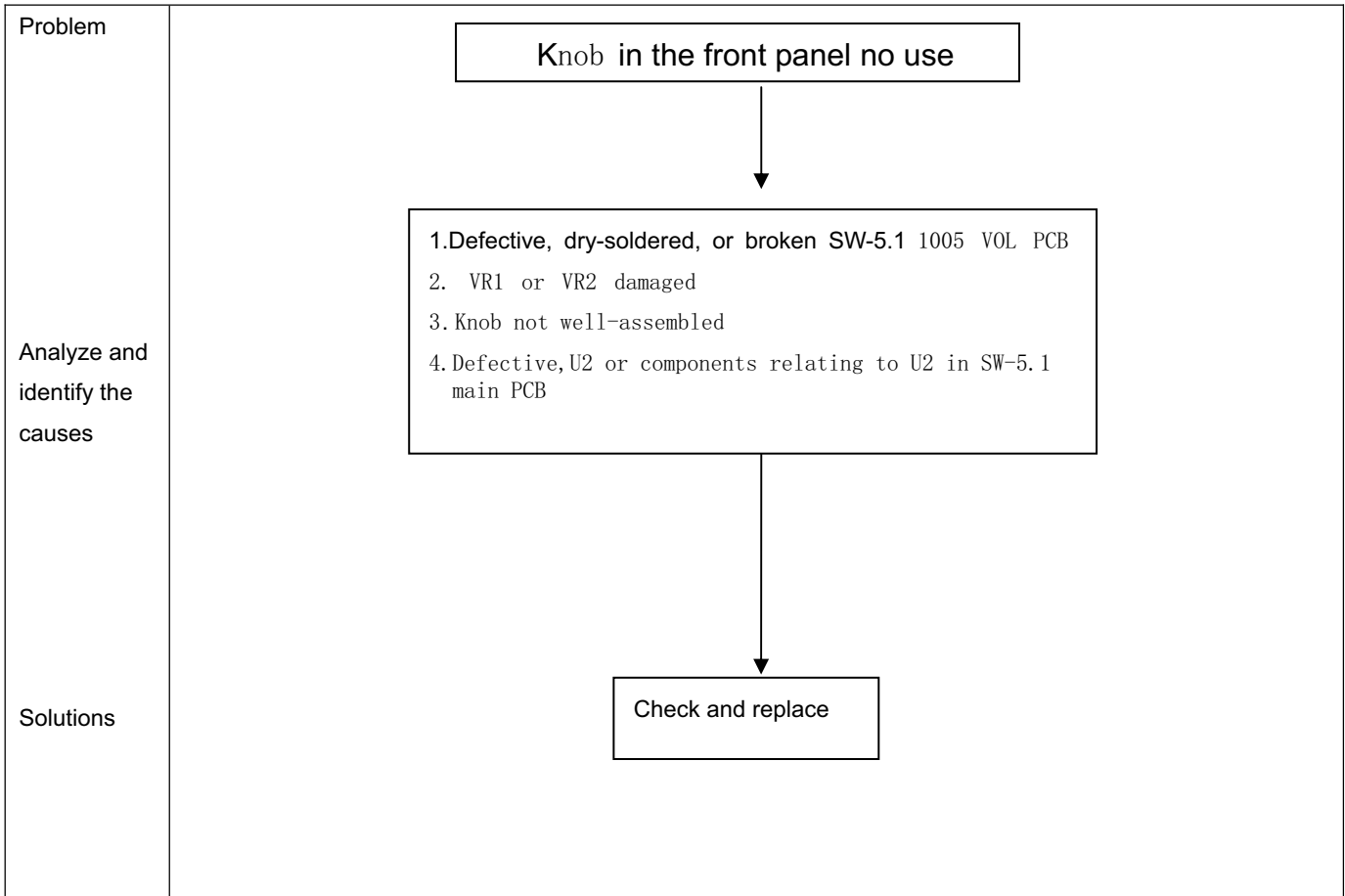
1.2.8. Noise



1.2.9. LED indicators abnormal



1.2.10. Knob in the front panel no use



Chapter 2. Specifications

Satellite

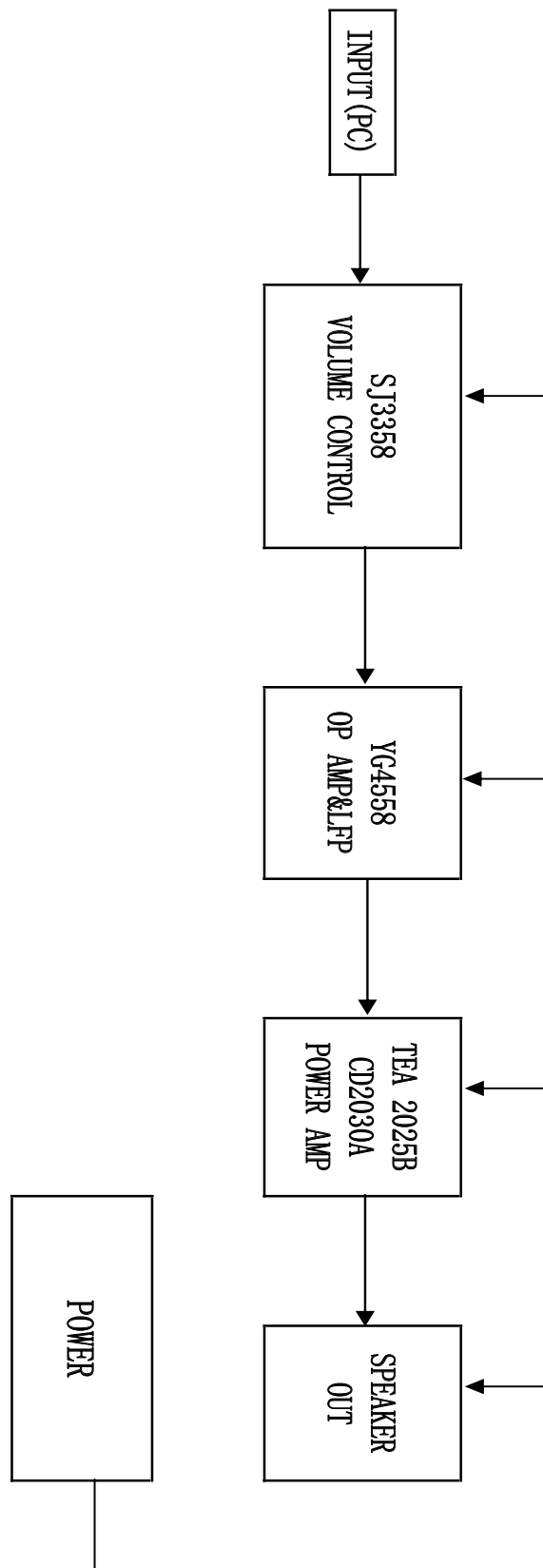
NO	DESCRIPTION	UNIT	NOMINAL					LIMIT
			CEN	FR	FL	SR	SL	
1	RATED OUTPUT POWER @THD10%	W	3.2	3.2	3.06	3.2	3.06	≥ 2.5
2	SENSITIVITY(1KHz)@RATED O/P POWER	mv	500	600	600	600	600	± 60
3	MAX INPUT LEVEL@1% THD	mv	260	280	275	280	275	± 20
4	FREQUENCY RESPONSE(1KHz -3dB) LOW	Hz	180	190	190	190	190	± 20
5	FREQUENCY RESPONSE(1KHz -3dB) HI	KHz	50	50	50	50	50	± 20
6	S/N@RATED O/P POWER	dB	72	73	71	72	71	≥ 70
7	CHANNEL UNBALANCE @REF O/P POWER	dB		0.4	0.4	0.4	0.4	≤ 0.5
8	CHANNEL SEPARATION(ONE CHANNEL IN ;OTHER CHANNEL INPUT SHORTING	dB	52	52	62	52	60	≥ 40
9	HUM NOISE (VOLUME MAX ;INPUT SHORTING	mv	0.42	0.44	0.42	0.4	0.4	≤ 2

Chapter 2 Specifications

Woofer

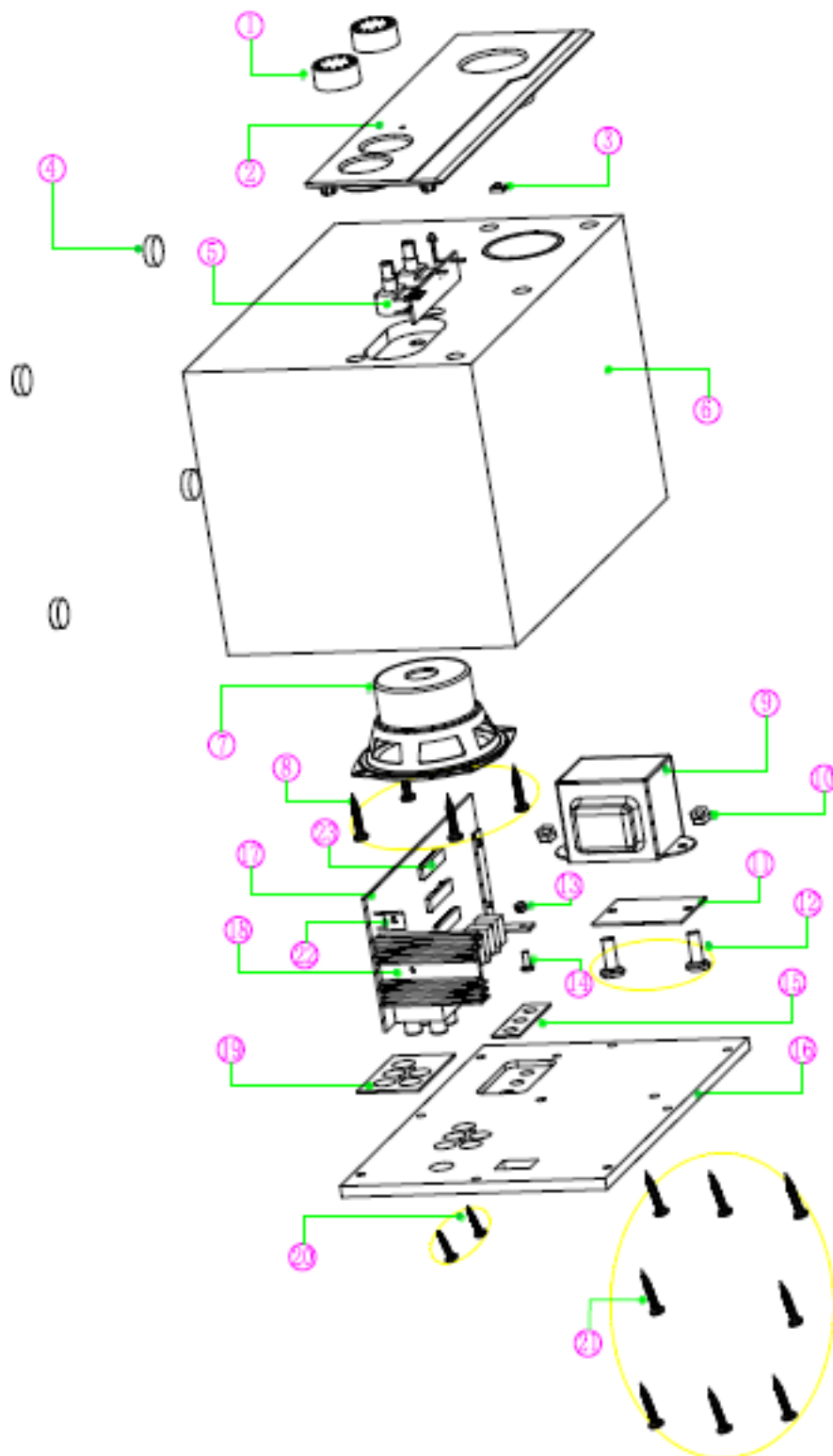
NO	DESCRIPTION	UNIT	NOMINAL	LIMIT
1	RATED OUTPUT POWER @THD10%	W	13.69	≥ 13.5
2	SENSITIVITY(100Hz)@RATED O/P POWER	mv	130	± 30
3	MAX INPUT LEVEL@1% THD	mv	105	± 10
4	<u>DISTORTION@100Hz REF O/P POWER</u>	%	0.42	≤ 0.5
5	FREQUENCY RESPONSE (100Hz -3dB) LOW	Hz	18	± 5
6	FREQUENCY RESPONSE (100Hz -3dB) HI	Hz	200	± 15
7	<u>S/N RATIO@100Hz RATED O/P POWER</u>	dB	73	≥ 70
8	VR MAX NOISE&HUM(INPUT SHORTING)	mv	0.9	≤ 2

Chapter 3 Block diagram



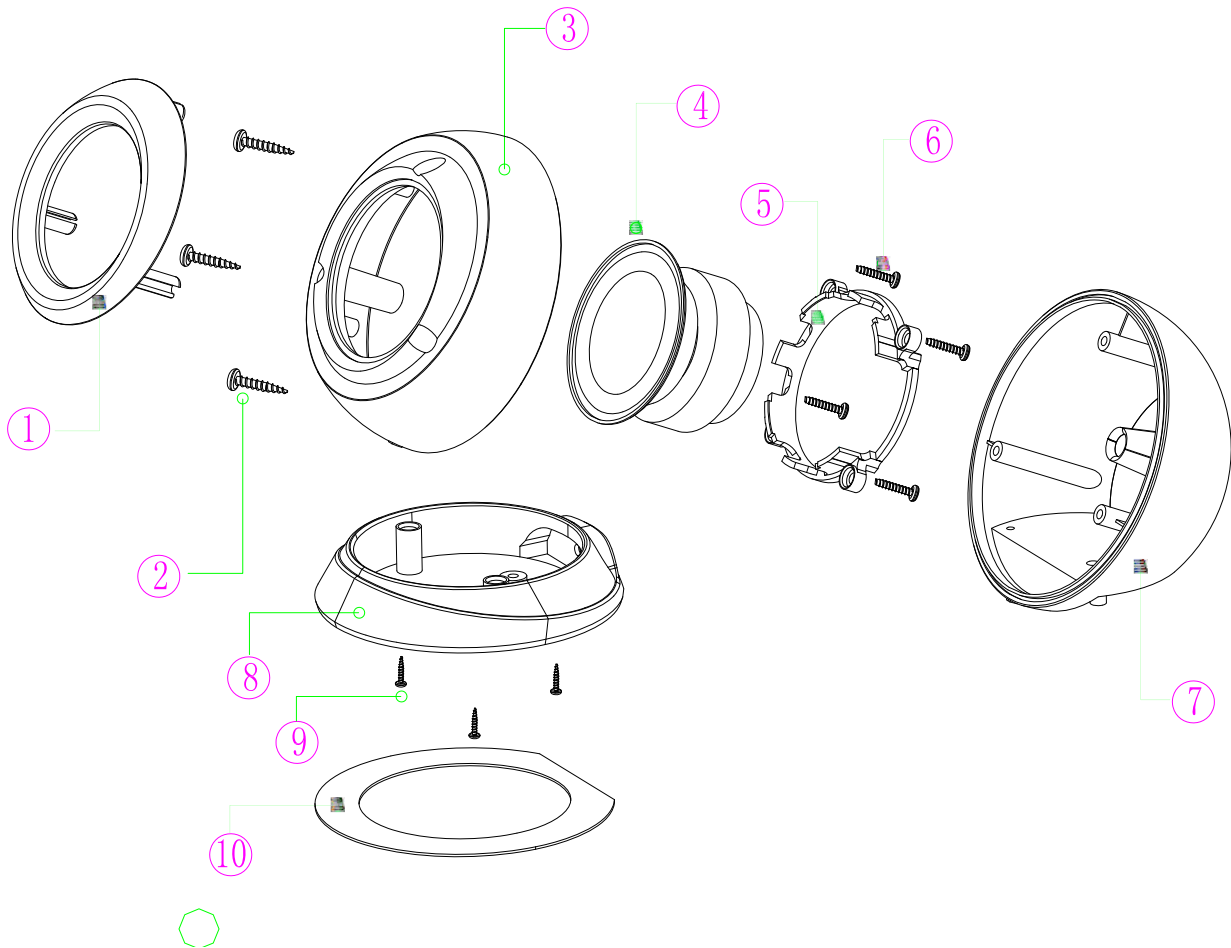
Chapter 4 Exploded view

Subwoofer



Chapter 4 Exploded view

Satellite



Chapter 5 Part list

Woofers

Serail NO	Description	Prat NO
1	Knob of the woofer	R226-SW510-000
2	front panel of the woofer	R220-SW510-000
3	LED silica gel cover	R246-00022-00Z
4	Footmat $\Phi 15*5\text{mm}$ black	R252-15050-X10
5	VOL PCBA	R942-SW511-000
6	wooden case SW-5.1 1005 black	R400-SW510-A01
7	Speaker 3"4 Ω 15W	R600-13025-150
8	screw TA3.5*15	R311-15035-75A
9	transformer 230V/12V*2/0.8A;8.5V1.1A	R612-SW510-3F9-0
10	nut M4 black	R314-0004A-009
11	transformer EVA pad black	R251-75382-000
12	Screw PWM4*15 black	R310-04150-809
13	nut M3	R314-00030-009
14	Screw BM3*12 black	R310-12030-56A
15	Input EVA pad black	R251-45181-000
16	wooden back cover black	R415-SW510-000
17	main PCBA /94V0	R941-SW511-000
18	thermal slug /AL6061	R362-36551-000
19	Output EVA pad black	R251-45321-000
20	screw TA3*15 black	R311-15030-71A
21	Screw BA3.5*22 black	R311-20335-55A
22	CD2030ACD	R151-2030A-0CD
23	TEA2025B	R151-2025B-020

Chapter 5 Part list

Satellite

1	ornament ABS black	R233-M0520-000
2	Screw PA3*10 black	R311-10030-91A
3	Satellite front cover HIPS black	R220-HIPS0-000
4	Speaker 2"4Ω 3W	R600-52135-030
5	buck HIPS black	R224-AL206-002
6	Screw BA3*10 black	R311-10030-55A
7	Satellite back cover HIPS black	R221-HIPS0-000
8	Bed ABS black	R223-M0520-002
9	Screw PA2.6*8 black	R311-08026-910
10	EVA pad black	R251-M0520-X00

Chapter 6. Important Notes

6.1 Packing requirement for sending the PCB assembly by post
PCB assembly is a kind of sophisticated electronic circuit board. Well packing will be required when sending them by post.

*Some sophisticated IC components are mounted on the PCB assembly; hence it is necessary to pack each PCB assembly with a separate static protecting bag, in order to avoid static electricity.

*Reliable external packing is also very important when sending the PCB assembly by post, in that it would avoid unnecessarily lost or damage.

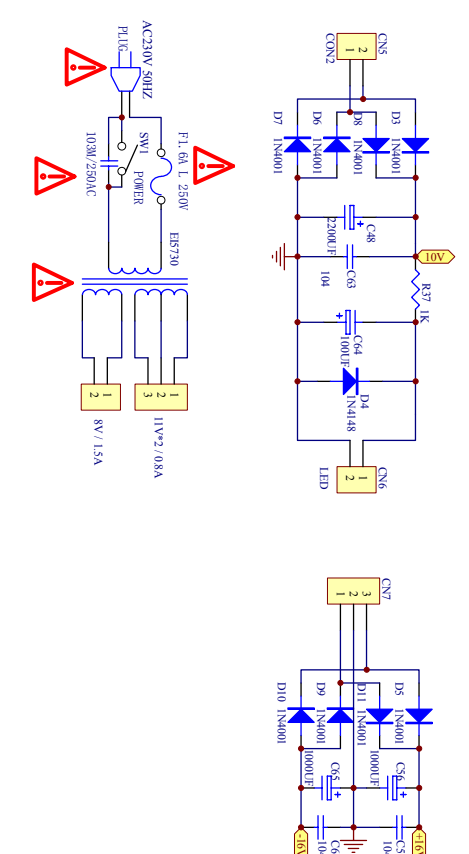
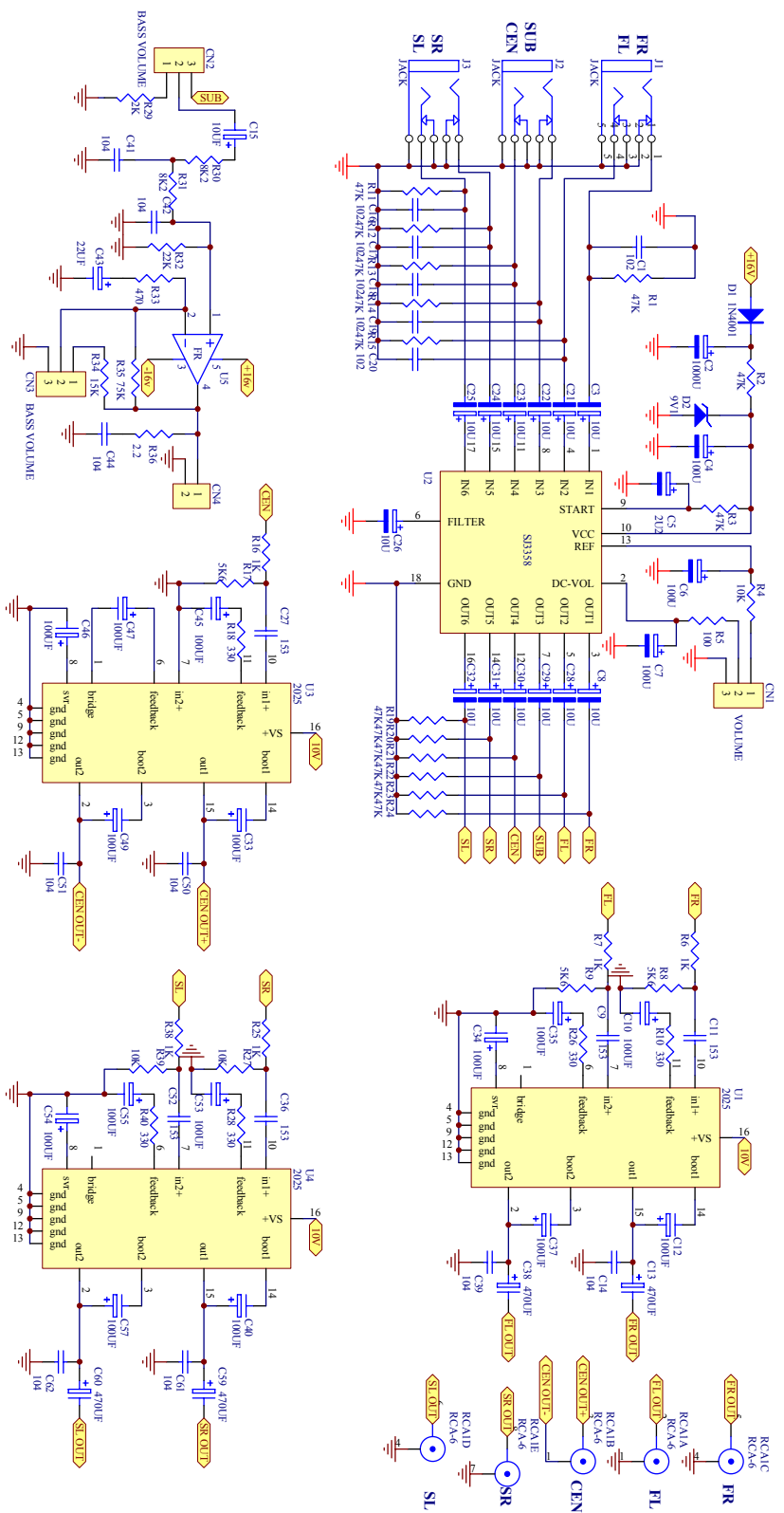
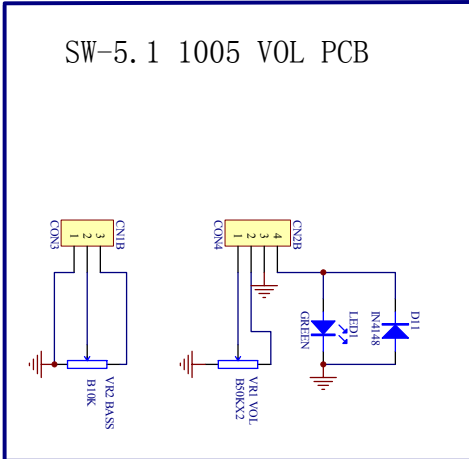
6.2 Short of spare parts while repairing a speaker system

If you are short of spare parts when you have some speaker systems waiting to be repaired, it would be recommended to take the necessary parts from one

Speaker system, so that you may have the as many speaker systems

Chapter 7. Schematic diagram

SW- 5.1 1005 main PCB /SW-5.1 1005 VOL PCB



SW-5.1 1005 mail PCB