

JVC

SERVICE MANUAL

SPEAKER SYSTEM

SP-S60BK(UP)



Contents

- Specification 2
- Guide to Repair 2
- Schematic Diagram 6
- General Exploded View and Parts List 7
- Network Assembly and Parts List 8
- Mecha Assembly and Parts List 9
- P.C.Board and Parts List 10
- Packing Materials and Part Numbers 11

Specifications

Item	Rating	Item	Rating
Type	3-way bass reflex type	Frequency range	:45Hz~20,000Hz
Speakers Low range:Woofer Mid range (Motor-driven) High range:Tweeter	13.5cm(5-3/8")cone×1 7.5cm(3")cone×1 5.5cm(2-3/16")cone×1	Sound pressure level	:87dB/w.m
Power handling capacity	:50watts	Dimensions(W×H×D)	:204×366×245mm :(8-1/16"×14-7/16"×9-11/16")
Rated Impedance	:6 ohms	Weight	:4.2kg(9.3 lbs)each
		Accessory	:Speaker cord×2

Note : Design and Specifications subject to change without notice.

Guide to Repair

■Removing the Grille Assembly

Pull one side of the grille assembly outward to remove it.

■Removing the Holder

Insert a philips screwdriver into the holder, then lift to remove it (See Figs.1 and 2).

Note :

Cover the retaining block with felt or other soft material in order to avoid scratching the ornament assembly.

■Removing the ornament Assembly

Remove 5 front panel holders and take out the underlying 5 screws.

Note :

Use felt or other soft material in order to avoid dents and scratches to the ornament assembly and cabinet.

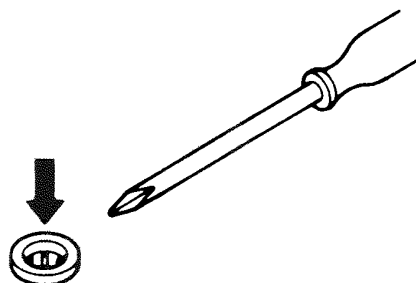


Fig.1

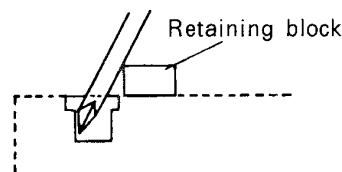


Fig.2

■ Removing the Speaker unit

(1) Woofer

Remove the ornament assembly and replace from the front of the cabinet.

(2) Tweeter

Mounted by screws at the rear of the ornament. Replace from the rear of the ornament.

(3) Motor-driven speaker assembly

Mounted at the rear of the ornament. Take out 4 screws to remove the unit. (See page regarding mechanism.)

Note :

When removing the speaker units, use felt or other soft material in order to avoid dents and scratches to the cabinet and speaker units.

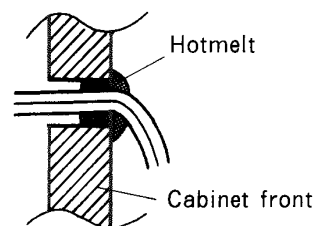


Fig.3

■ Removing the Speaker Terminal

Secured by screws at the rear of the cabinet. Take out 4 screws to remove and replace.

■ Removing the Tweeter wiring

Tweeter wiring is secured to the cabinet front by hotmelt compound. Use a hair dryer or other means to warm the hotmelt when removing and replacing the Tweeter wiring (Fig. 3).

Note :

When replacing parts, in order to prevent air leakage, secure from the inner side with rubber type bond (Diabond No. 1600MA or equivalent).

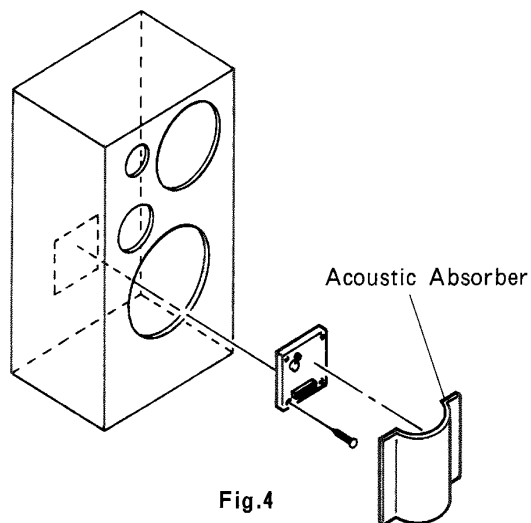


Fig.4

■ Removing the Network Assembly

Network Ass'y is mounted inside of the back board of the cabinet. Dismount all the speaker unit. Remove screws fixing the network and remove four screws fixing the speaker terminals to take out the Network Ass'y from the front side.

■ Motor-driven speaker disassembly

Removing the speaker unit

- (1) Remove the Motor-driven speaker assembly.
- (2) Take out 4 screws A (Fig. 5).
- (3) Disengage connector P001 (Fig. 6).
- (4) Take out 4 screws B and remove the gear assembly (Fig. 6).
- (5) Take out 2 screws C and disengage the holder spring (Fig. 8).
- (6) Take out 4 screws D, and remove chamber B (Fig. 7).
- (7) Remove the ornament assembly.

Gear Assembly

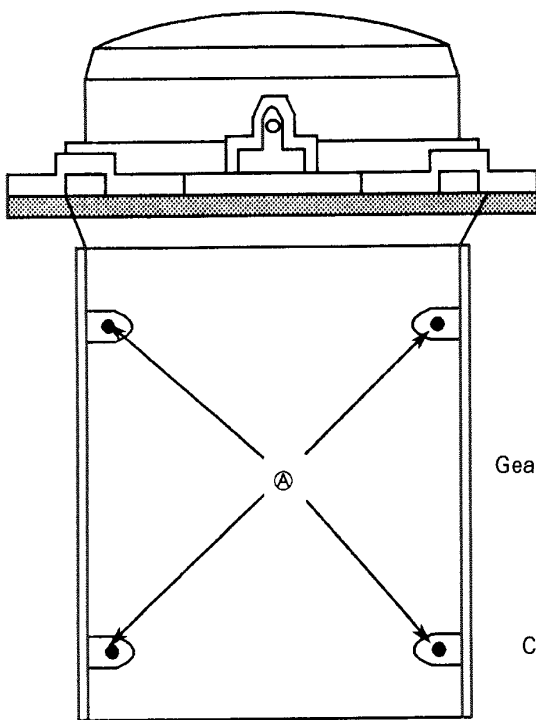
- (1) Take out screw E and remove the gear (Fig.6).
- (2) Unsolder the circuit board before removing the variable resistor detecting the speaker position (attached to gear E) and speaker drive motor.

■ Initial adjustment after reassembling gear and chamber B (Fig. 6).

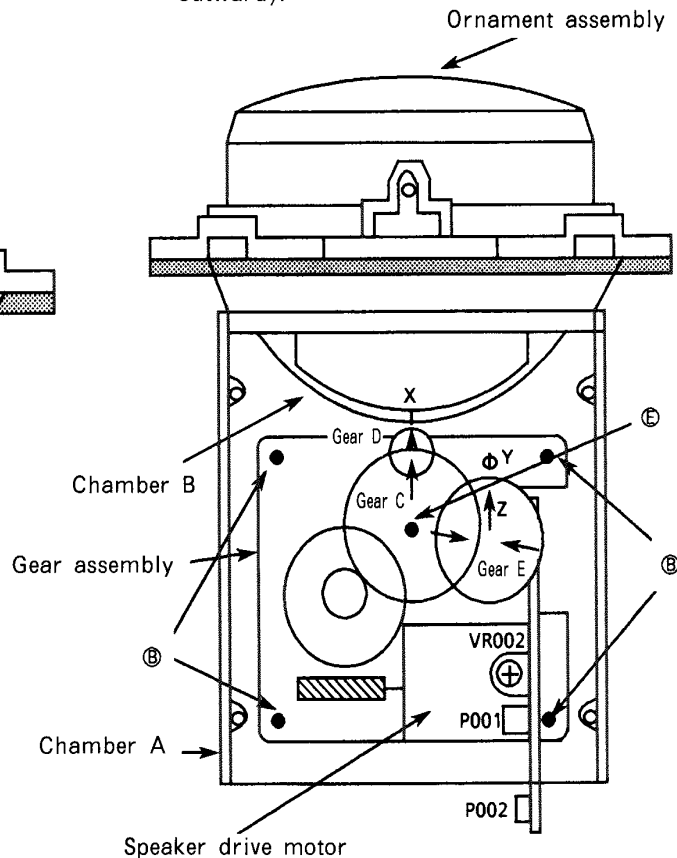
- (1) Install so that the line mark of chamber B in X position and the arrow mark of gear D are directly aligned.
- (2) Align the center of boss Y with the arrow mark of gear E in Z position.
- (3) Install gear C. If it does not engage, shift gear E to the extent to allow engagement. The arrow mark of gear C set as shown Fig. 6.
- (4) Perform speaker cabinet connections and engage the RX-MXS6BK system connector.
- (5) Connect the RX-MXS6BK power and set power on. Then chamber B is moving, return chamber B as shown Fig. 6 by your hands.
- (6) Adjust VR002 to obtain 2.50 ± 0.01 V between P002 pins 2 and 4.

Note :

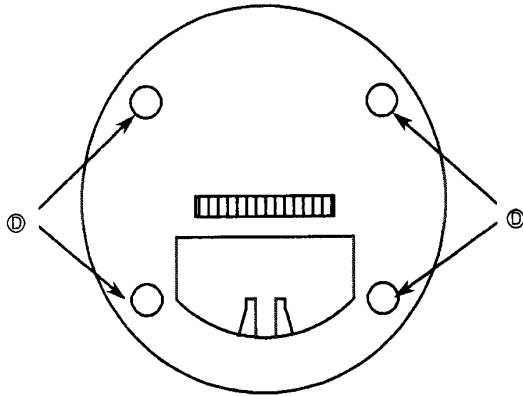
After adjusting, select "PANORAMA SURROUND" mode and the speaker direction changes (in "PANORAMA SURROUND" mode off, aim 3 degrees outward).



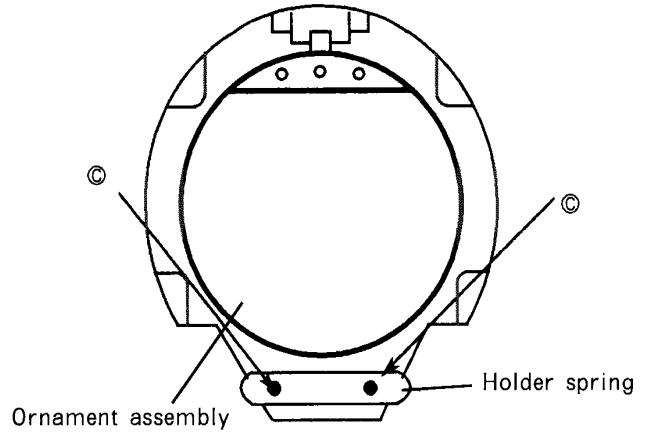
Motor-driven speaker assembly side view
Fig.5



Motor-driven speaker assembly interior
Fig.6



Chamber B rear view
Fig.7



Motor-driven speaker front view
Fig.8

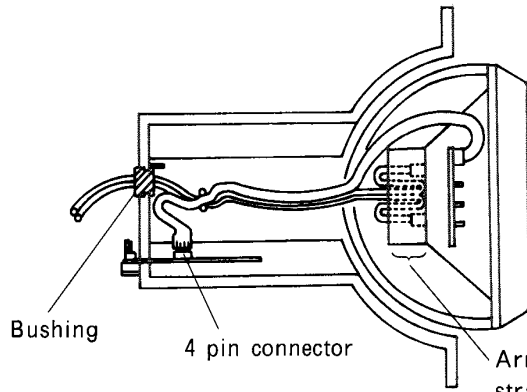
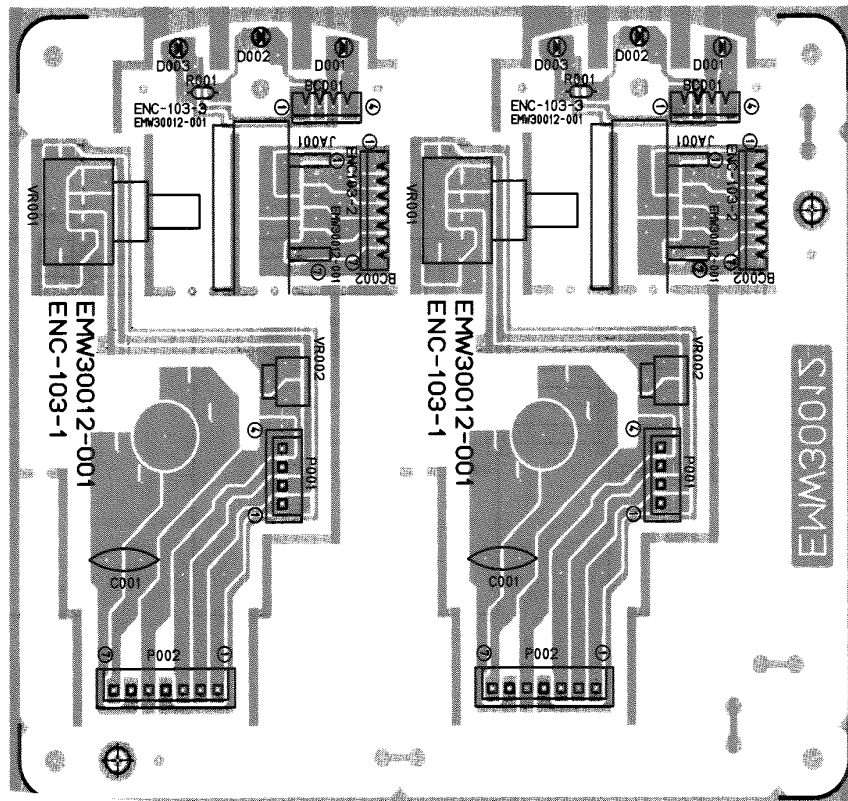


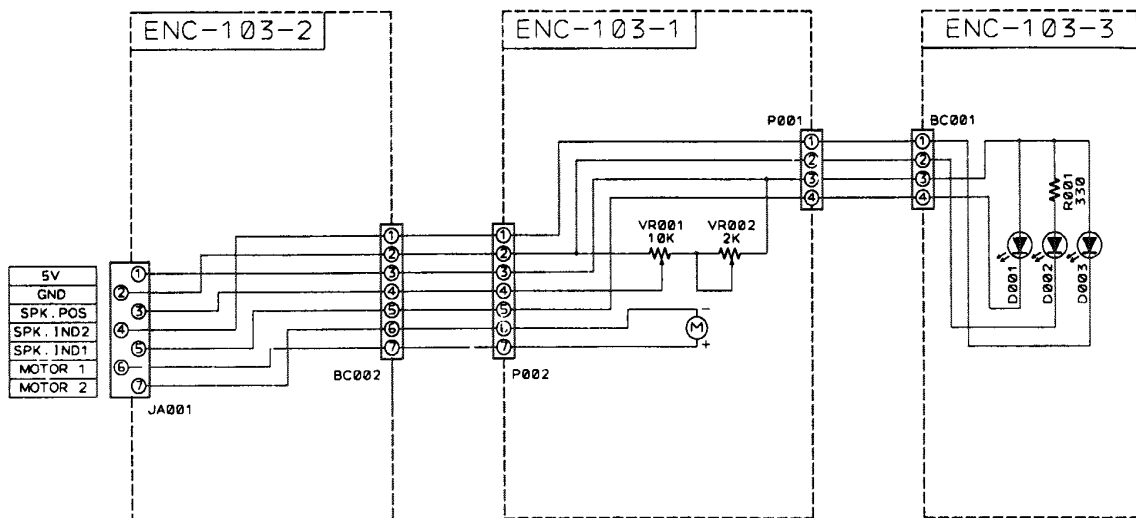
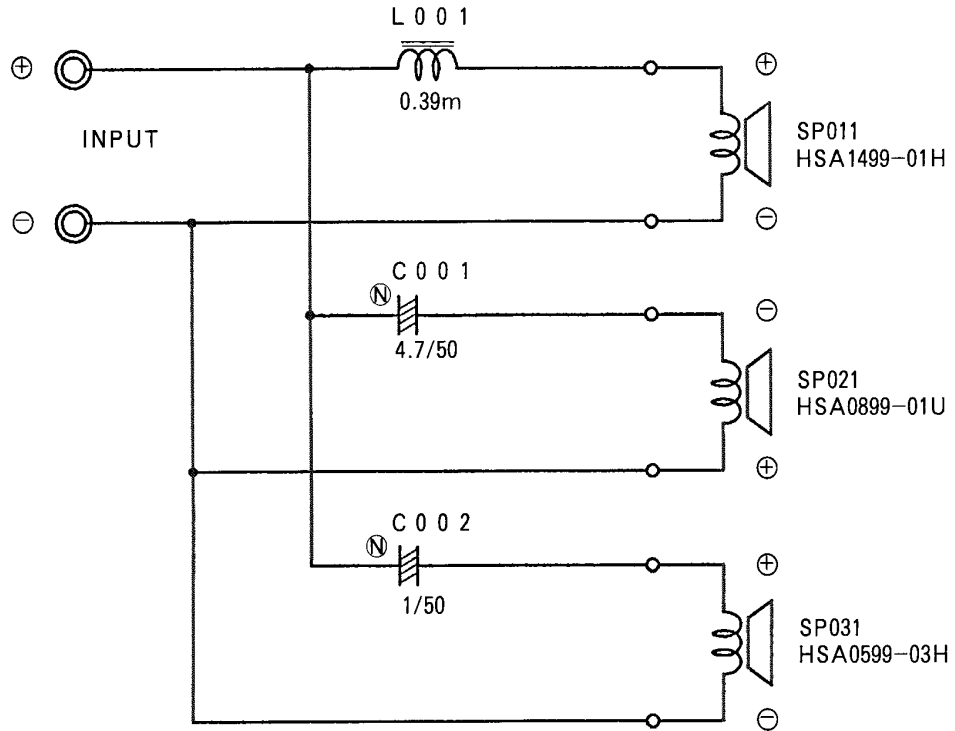
Fig.9

Arrange the speaker wires straight in front of the clamp and bend close to the terminals

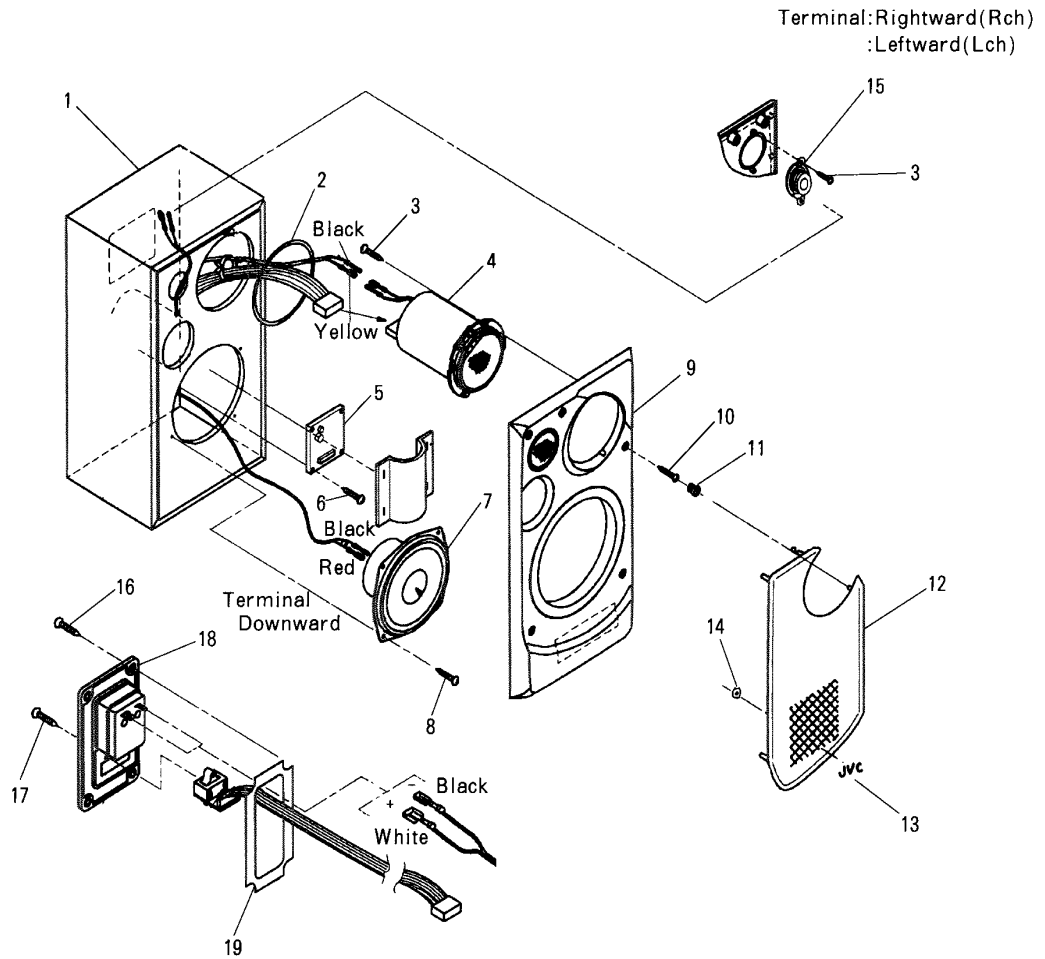
Printed Circuit Board



Schematic Diagram

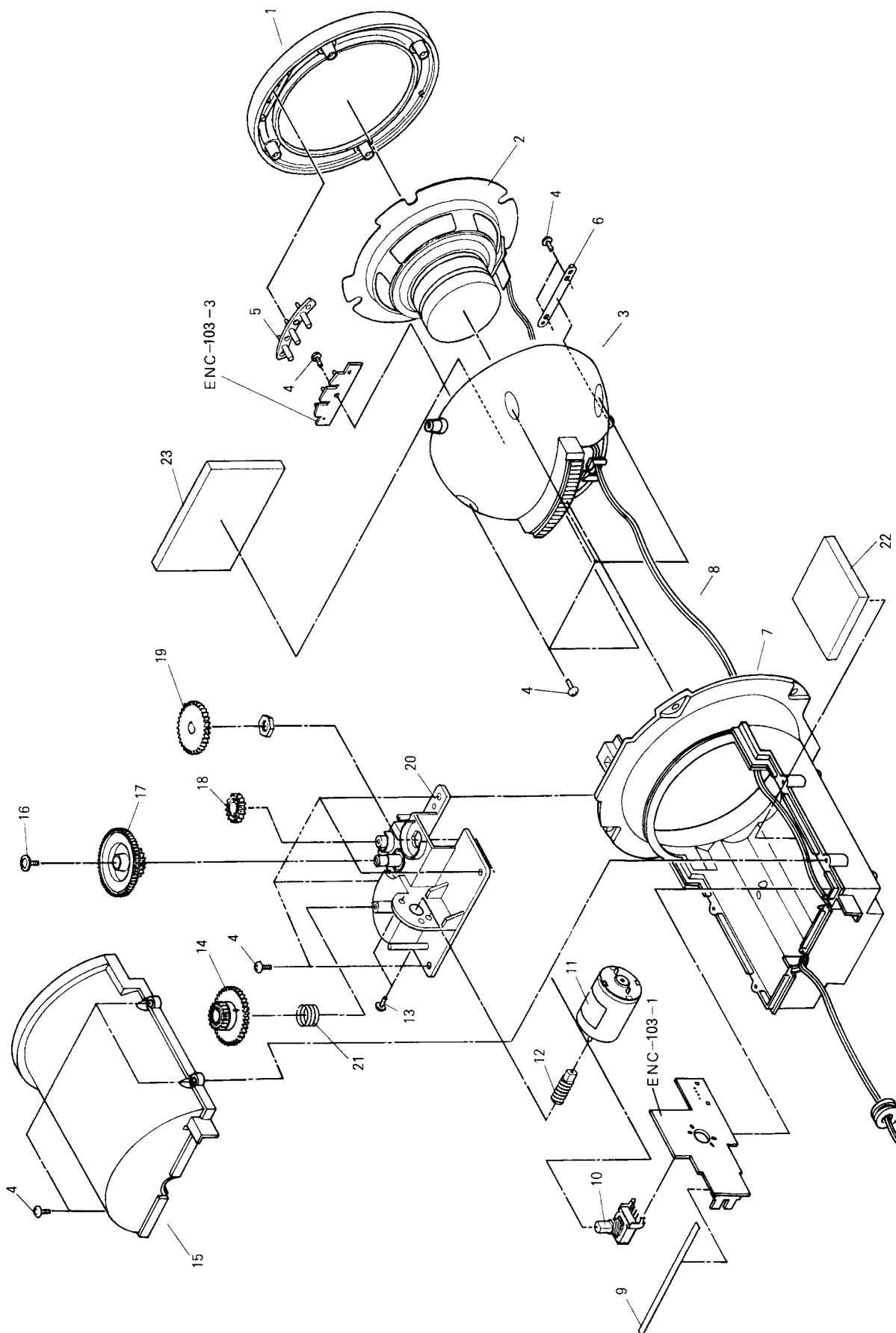


General Exploded View and Parts List



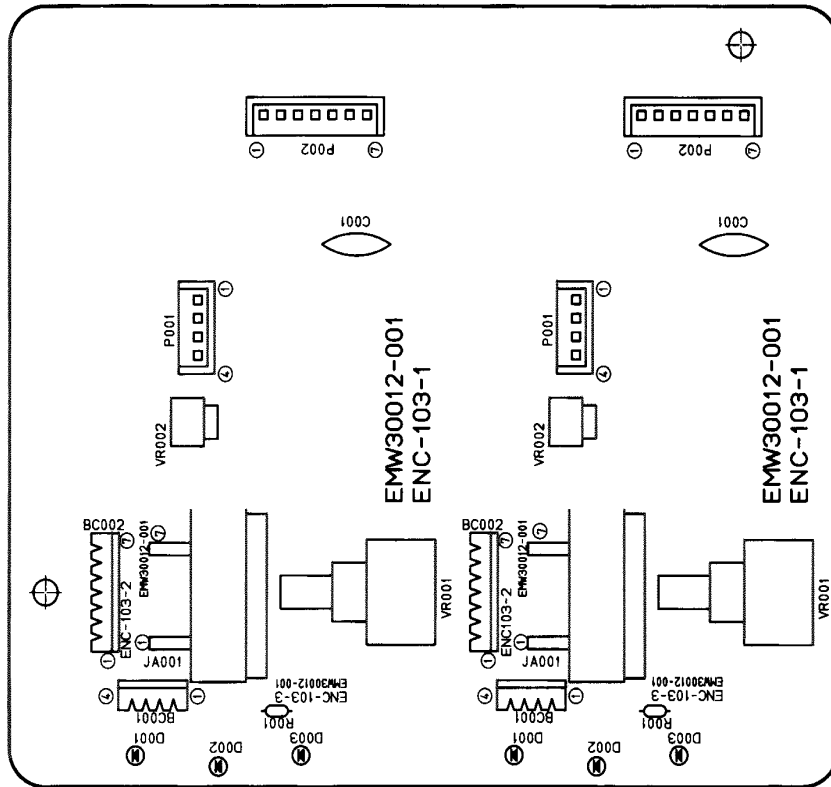
Item	Part Number	Part Name	Q'ty	Description	Areas
1	EZC-SP-MXS6BKL EZC-SP-MXS6BKR	Cabinet Assembly Cabinet Assembly	1 1	Left Right	
2	E407813-001	Spacer	1		
3	SBSF4010Z	Screw	6		
4		Mecha Assembly	1	Refer to Page 9	
5	E308543-001	Network Assembly	1		
6	SDSA4016Z	Screw	4		
7	HSA1499-01H	Speaker	1	SP 011	
8	SDSA4020Z	Screw	4		
9	E308481-003	Ornament Assembly	1	Left	
	E308481-004	Ornament Assembly	1	Right	
10	GPSA4025Z	Screw	5		
11	E407076-001	Holder	5		
12	E102699-001	Grill Assembly	1	Left	
	E102699-002	Grill Assembly	1	Right	
13	E75939-001	JVC Mark	1		
14	NSS3000M	Nut	1		
15	HSA0599-03H	Speaker	1	SP 031	
16	SBSA3016M	Screw	4		
17	SBSF3010M	Screw	1		
18	E308440-001	Speaker Terminal	1		
19	E407451-001	Terminal Spacer	1		

Mecha Assembly and Parts List



Item	Part Number	Part Name	Q'ty	Description	Areas
1	E308450-002	Ornament Assembly	1	SP 021	
2	HSA0899-01U	Speaker	1		
3	E207815-002	Chamber(B)	1		
4	SBSF3010Z	Screw	15		
5	E407223-001	Indicator	1		
6	E407222-001	Holder Spring	1		
7	E102692-001	Chamber(A)	1		
8	WE11909-00E	Wire	1		
9	E407468-001	Spacer	1		
10	QVCA74B-E14B	V.Resistor	1		
11	MXN-13FB12F	Motor	1		
12	E407224-001	Gear(A)	1		
13	SPSP3004Z	Screw	2		
14	E407225-001	Gear(B)	1		
15	E207816-001	Cover	1		
16	GBSF3006Z	Screw	1		
17	E308182-001	Gear(C)	1		
18	E407226-001	Gear(D)	1		
19	E407227-001	Gear(E)	1		
20	E207577-001	Mecha Base	1		
21	E407367-001	Spring	1		
22	E407754-001	Spacer	1		
23	E407576-001	Spacer	1		

Printed Circuit Board and Part List



Diode

△	Symbol No.	Part Number	Description	Area
	D001	SLH-34MC3F	L.E.D.	
	D002	SLH-34VC3F	L.E.D.	
	D003	SLH-34MC3F	L.E.D.	

Other

△	Symbol No.	Part Number	Description	Area
	BC001	EWS00Z-013	Wire Assembly	
	BC002	EWS00Z-014	Wire Assembly	
	JA001	EMV7127-007	Connector	
	P001	EMV5148-004	Plug Assembly	
	P002	EMV5148-007	Plug Assembly	

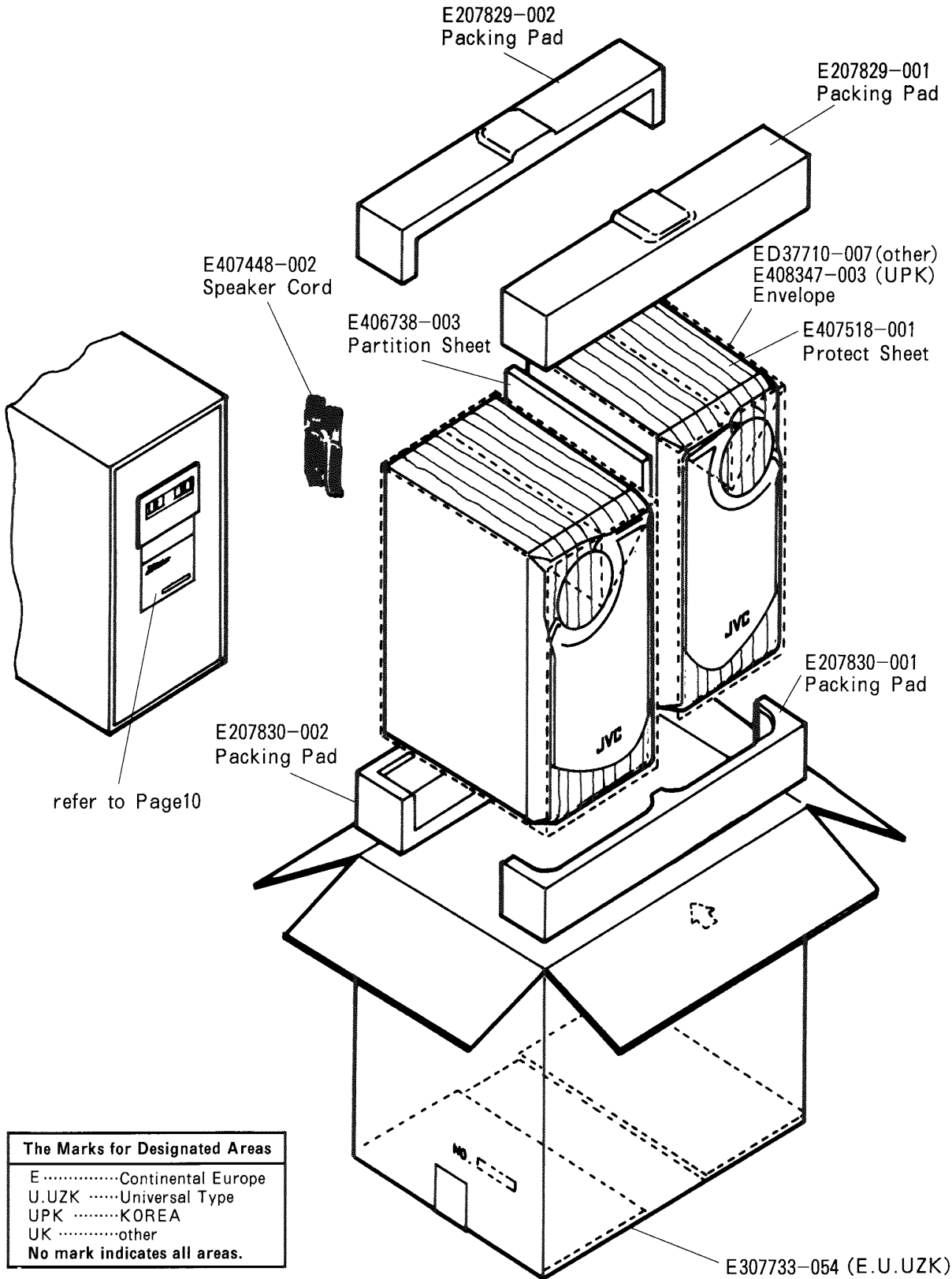
Resistor

△	Symbol No.	Part Number	Description	Area
	R001	QRD161J-331Y	330 1/6W Carbon	
	VR002	QVPA603-222A	Variable	

Rating Label List

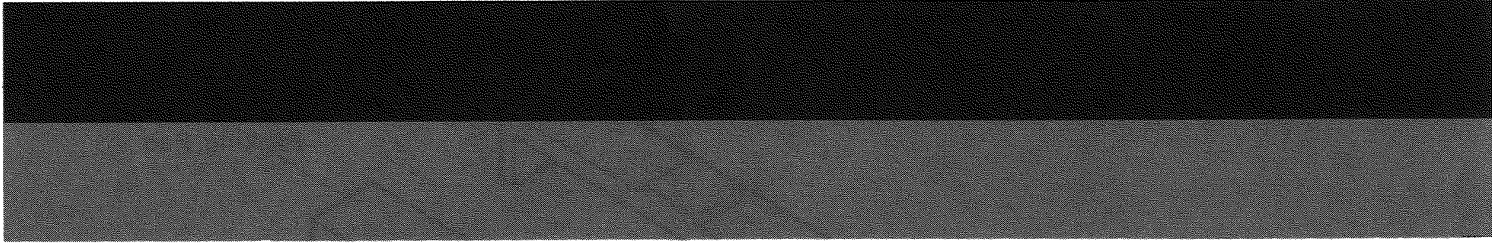
Item	Part Number	Part Name	Q'ty	Description	Areas
—	E408093-001	Rating Label	1	Left	E
—	E408093-002	Rating Label	1	Right	E
—	E408093-003	Rating Label	1	Left	U
—	E408093-004	Rating Label	1	Right	U
—	E408093-005	Rating Label	1	Left	UK
—	E408093-006	Rating Label	1	Right	UK
—	E408093-007	Rating Label	1	Left	UZK
—	E408093-008	Rating Label	1	Right	UZK
—	E408494-001	Rating Label	1	Right	UPK
—	E408494-002	Rating Label	1	Left	UPK

Packing Materials and Part Numbers



The Marks for Designated Areas	
E	Continental Europe
U.UZK	Universal Type
UPK	KOREA
UK	other
No mark indicates all areas.	

SP-S60BK



JVC

VICTOR COMPANY OF JAPAN, LIMITED
AUDIO DIVISION, 1644, SHIMOTSURUMA, YAMATO-SHI, KANAGAWA-KEN, 242, JAPAN