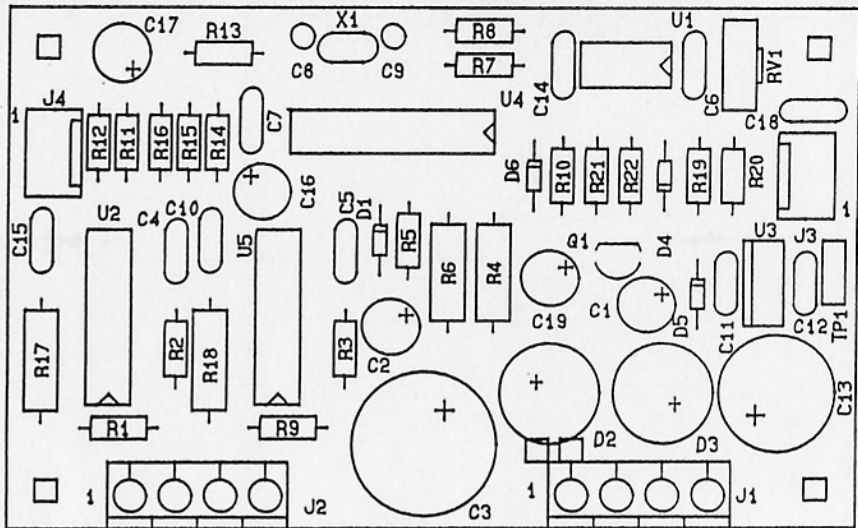


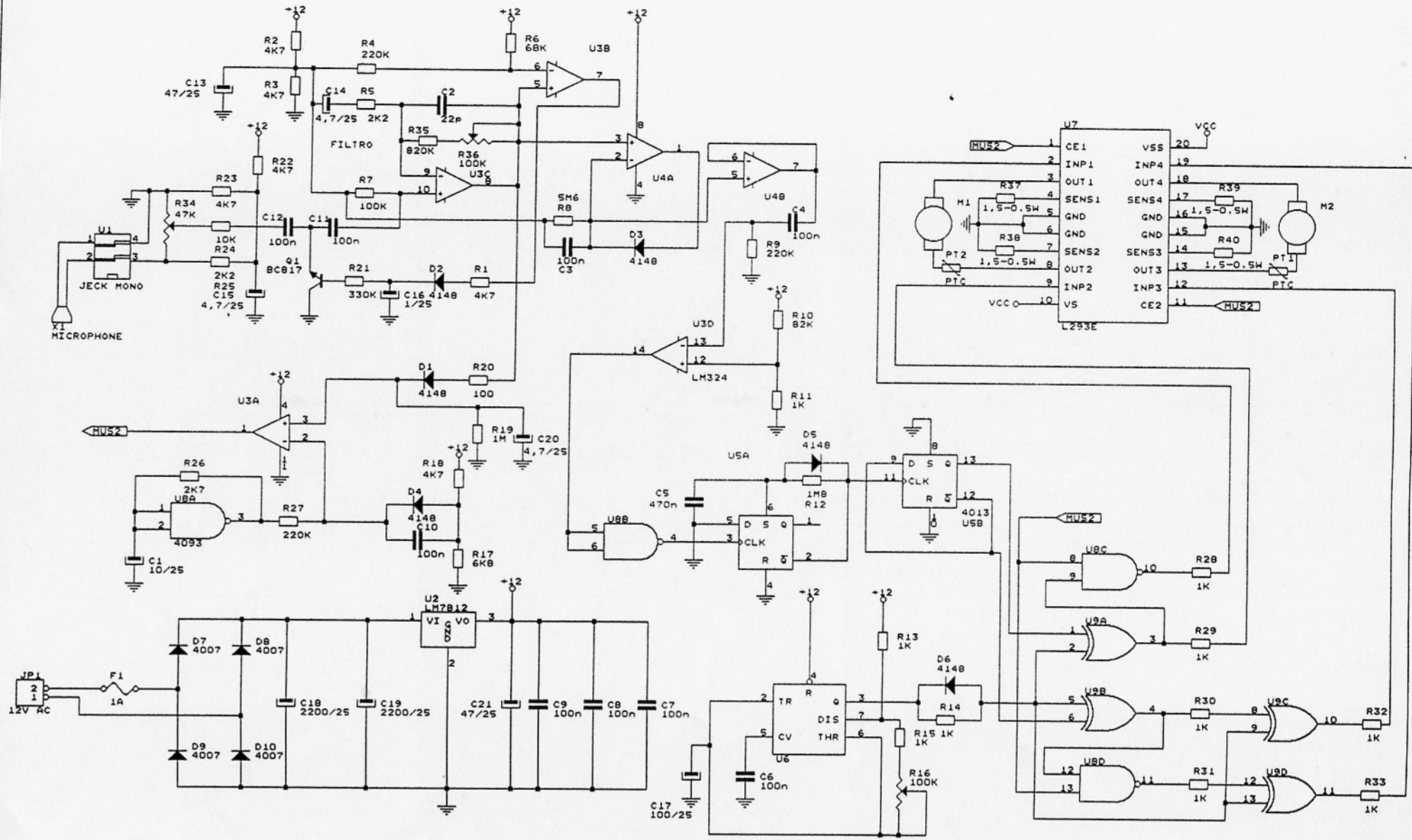
DIPLOMA IN INGEGNERIA

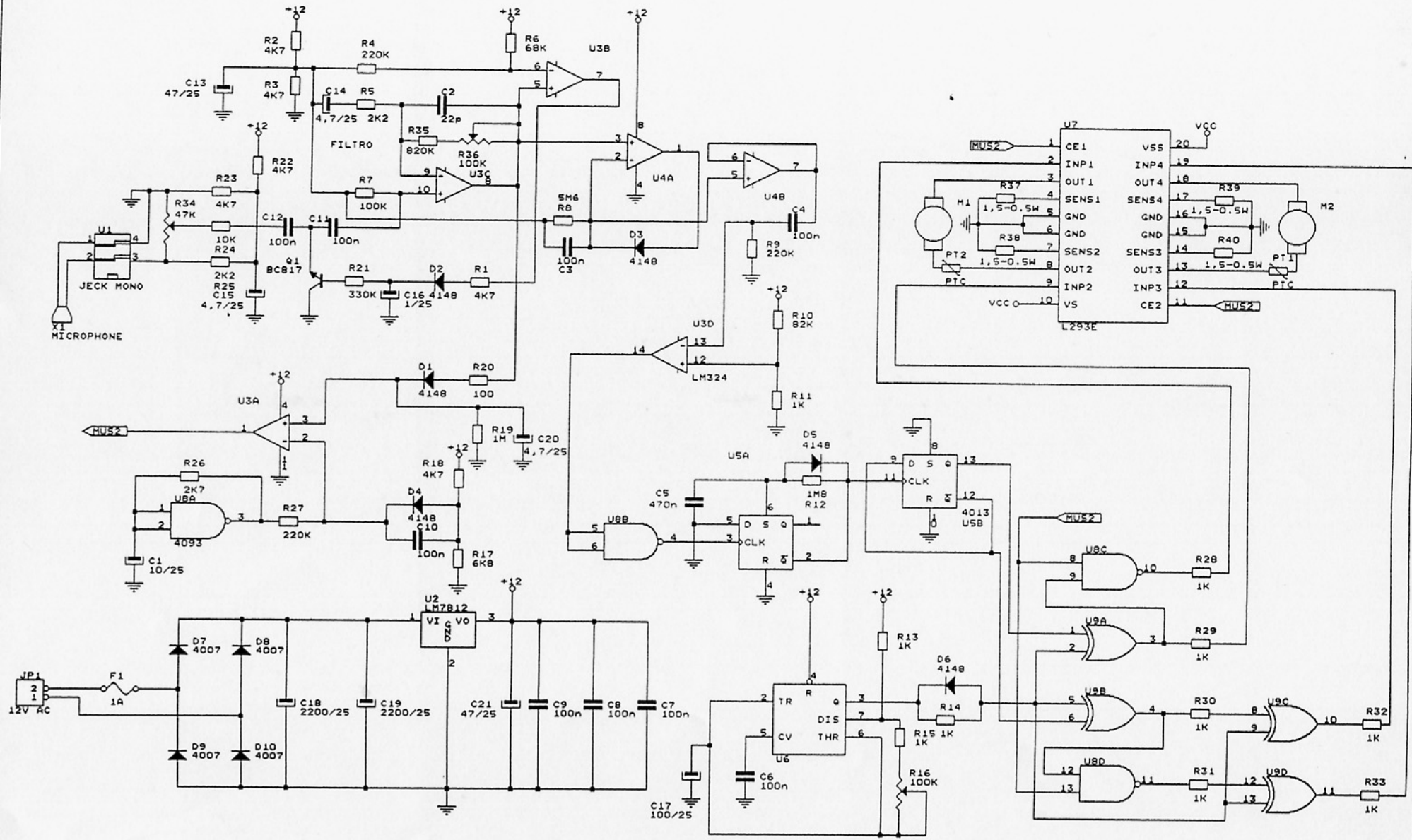
RIPRODUZIONE VIETATA

Title			
Giroscopio Control			
Size	Document Number	REV	
A	rotocopp.sch	0.0	
Date:	November 15, 1994	Sheet	1 of 1

EL-1092170-

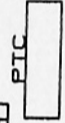
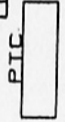
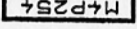
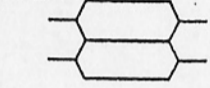
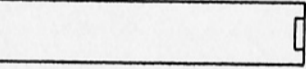
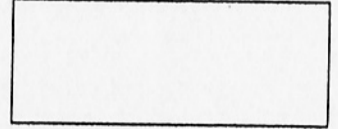
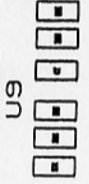
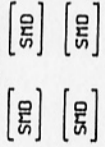
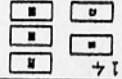
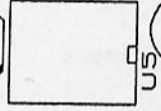
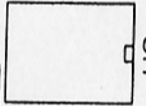
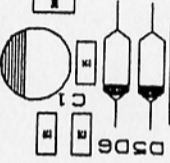
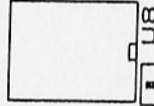
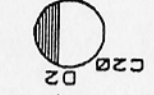
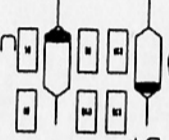
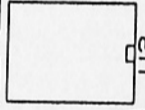
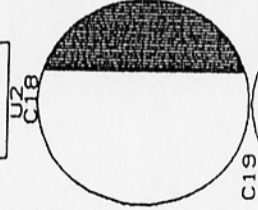
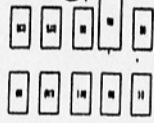
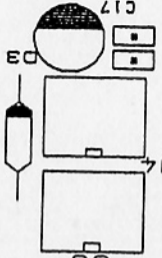
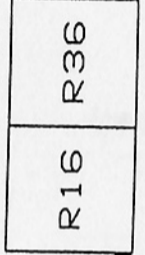




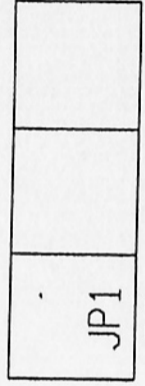


Title	CIRCUS.SCH	
Size	Document Number	REV
B	MUSICAL + SCAMBIATRICE	1
Date:	June 12, 1996	Sheet 1 of 1

AMP TIMER



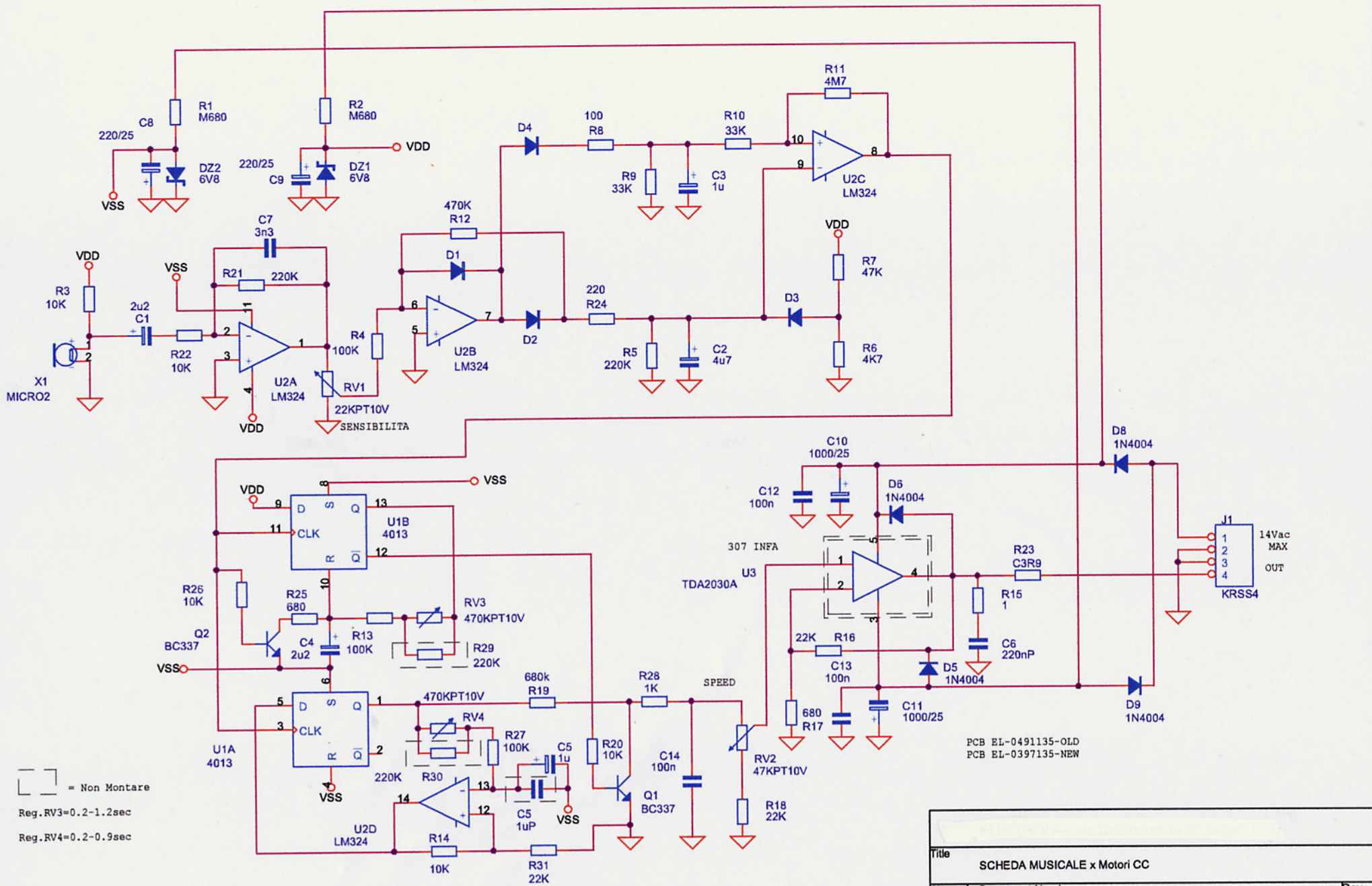
F 1



AC

M2

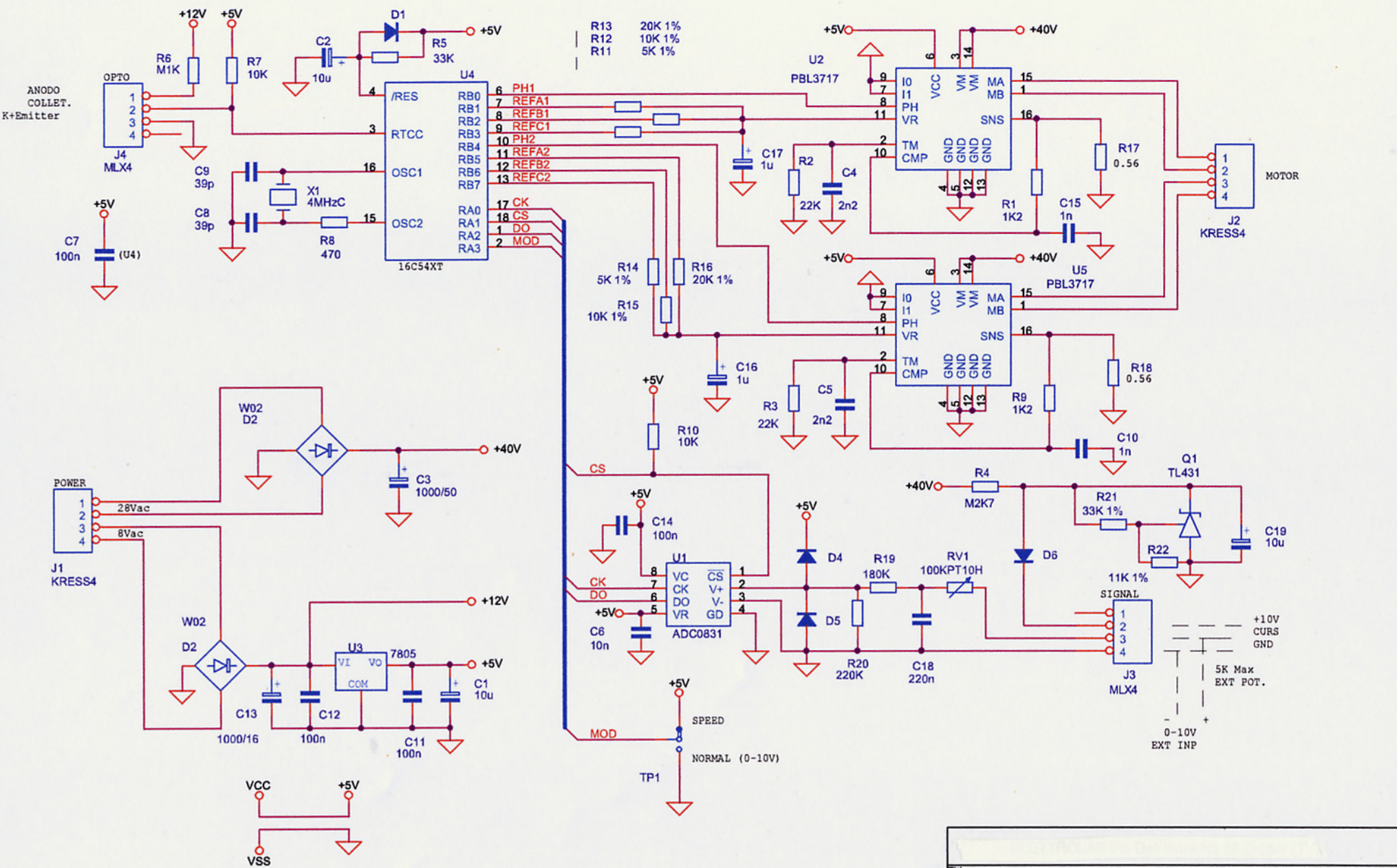
M1



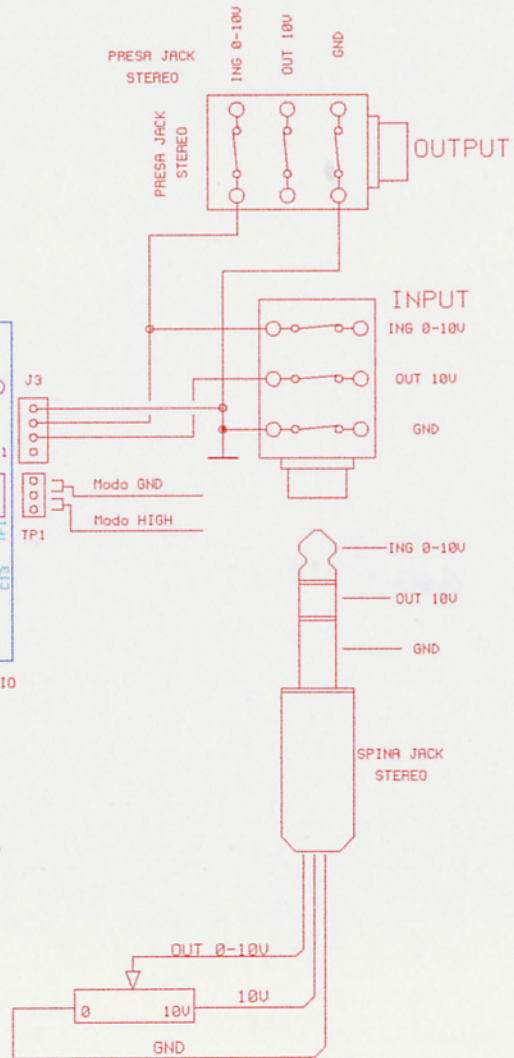
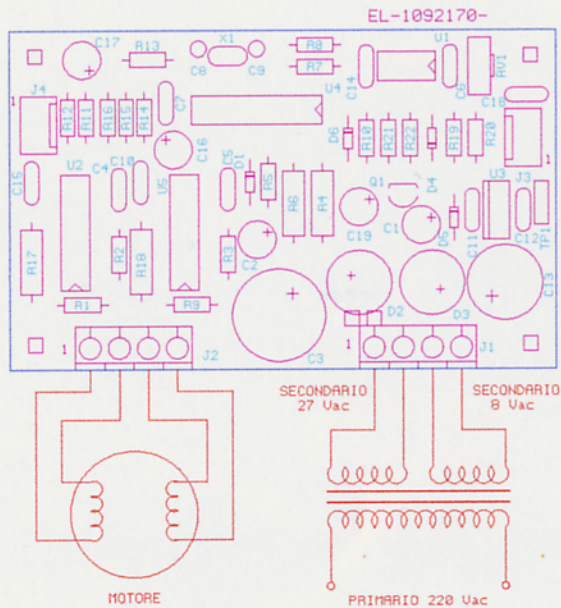
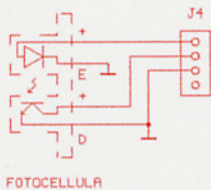
[] = Non Montare
 Reg. RV3=0.2-1.2sec
 Reg. RV4=0.2-0.9sec

PCB EL-0491135-OLD
 PCB EL-0397135-NEW

Title		
SCHEDA MUSICALE x Motori CC		
Size A	Document Number	Rev 1.1
	769	
Date:	Thursday, October 10, 2002	Sheet 1 of 1

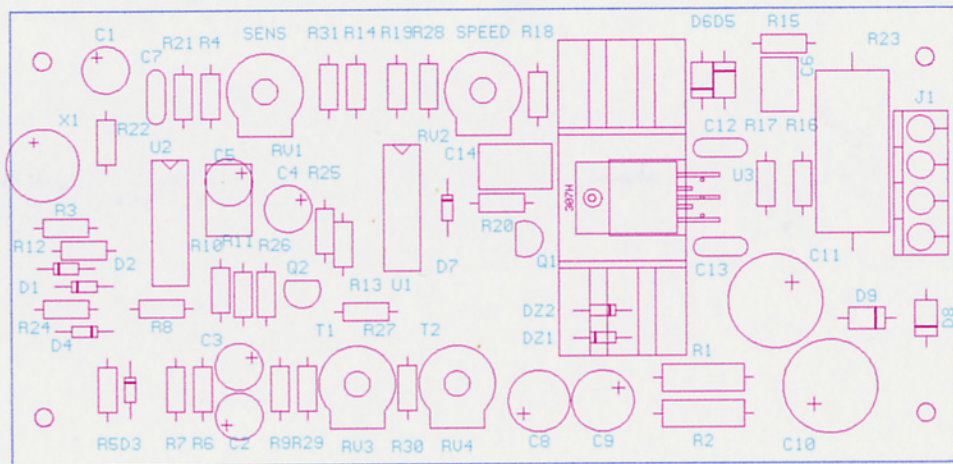


Title		
0/10V Stepper CONTROL		
Size	Document Number	Rev
A	STEPPER.SCH	0.0
Date:	Wednesday, October 09, 2002	Sheet 1 of 1



RV1
REGOLAZIONE
SENSIBILITA'

RV2
REGOLAZIONE
VELOCITA'



→ USCITA
MOTORE
← INGRESSO
ALIMENTAZIONE
14 Vac MAX

RV3
REGOLAZIONE
TEMPO DI CORSA
RV4
REGOLAZIONE
TEMPO DI INVERSIONE