



Service Information

Washing machine Toploader

TDLR 60111

8593 343 10050

Last Modification: 18/03/16

Creation Date: 23/06/15

Spare Part List	2
Exploded View	4
Technical Data	6
Wiring Diagram	8
Circuit Diagram	10
Program Chart	12
Testprogram	27
Error Codes	28
Service Bulletin 4812 712 40362	41
Service Bulletin 4812 712 40355	42
Service Bulletin 4812 712 40385	43
Service Bulletin 4812 712 40313	45
Service Bulletin 4812 712 40367	47
Service Bulletin 4812 712 40406	48
Service Bulletin 4812 712 40396	51
Service Bulletin 4812 712 40315	53
Service Bulletin 4812 712 40391	54

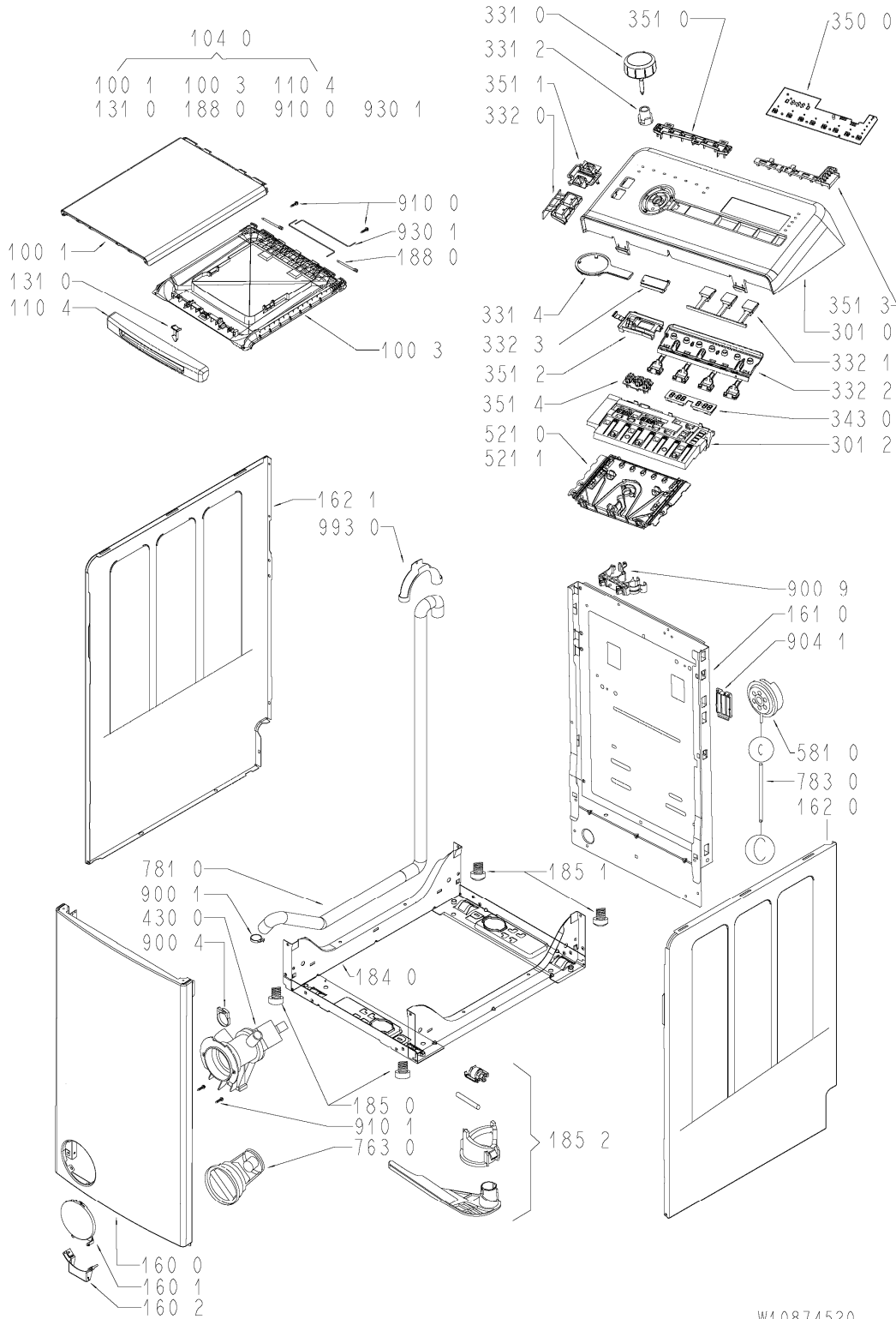
This document is only intended for qualified technicians who are aware of the respective safety regulations.
Subject to modifications

Spare Part List

Pos	12NC	Description
1001	4812 440 10842	Lid outer GW
1003	4810 730 84355	Lid inner
1040	4810 107 58775	Lid assembly, LR, WH, 15
1104	4810 107 66214	Handle LR, WH, 15
1300	4801 111 04601	Door lock Rold DA061667
1310	4812 417 19193	Door latch GW
1600	4812 440 10838	Front panel WH GW
1601	4812 459 38057	Flap round GW
1602	4812 459 38058	Hinge flap GW
1610	4801 101 00103	Rear panel
1620	4812 440 10839	Side panel right GW
1621	4812 440 10841	Side panel left GW
1810	4812 529 18043	Shock absorber
1811	4801 101 00803	Pin shock absorber
1820	4810 105 05120	Counter weight rear, LR
1821	4810 105 55030	Counter weight front
1822	4812 466 88492	Counter weight bottom
1823	4812 310 18506	Fixing mat.set bottom
1840	4812 440 19625	Drip tray assy
1850	4812 462 48054	Foot
1851	4812 528 78075	Foot rear
1852	4812 310 18497	Trolley kit front
1870	4812 440 11637	Frame Top+nozzle box KIT
1871	4810 750 23762	Frame inner
1880	4812 417 19155	Hinge bolt lid GW
1910	4812 466 68596	Door bellow
1911	4801 111 00817	Strap f. Doorbellow
2000	4812 418 18692	Tub LR-5pins/4fix
2001	4801 111 04401	Cover f. tub LR/4fix
2002	4801 111 02216	Container LR 5 pins, kit.
2200	4810 108 22802	Drum LR,0.5W,0.5E,1.8H,IB
2211	4810 105 72443	Kit latch f.drum
2230	4801 101 00104	Drum lifter low
2710	4812 358 18204	Belt PV 1207 J4 EL
2720	4812 528 88083	Pulley 298 mm
2900	4812 532 68078	Gasket
3010	4810 108 32890	Control panel
3012	4810 107 65238	Housing DLC, TL-R, 15
3310	4810 107 74759	Knob timer GRY, WP, 15
3312	4812 414 58307	Spring Knob timer
3314	4810 108 44842	Ring Button grey
3320	4810 107 75207	Button assy left, TL-R, GEY, 15
3321	4810 108 51706	Button assy Opt. 7-3,GRY,TL-R,15
3322	4810 108 51700	Button assy Opt. 7-4,GRY,TL-R,15
3323	4810 108 44840	Button Start grey
3430	4810 714 25741	Display
3500	4810 714 28481	Module
3510	4810 107 64089	Light guide Prog. Flow, TL-R, 15
3511	4810 107 68256	LIGHT GUIDE - LEFT, TL-R, 15
3512	4810 107 68255	Light guide Start, TL-R, 15

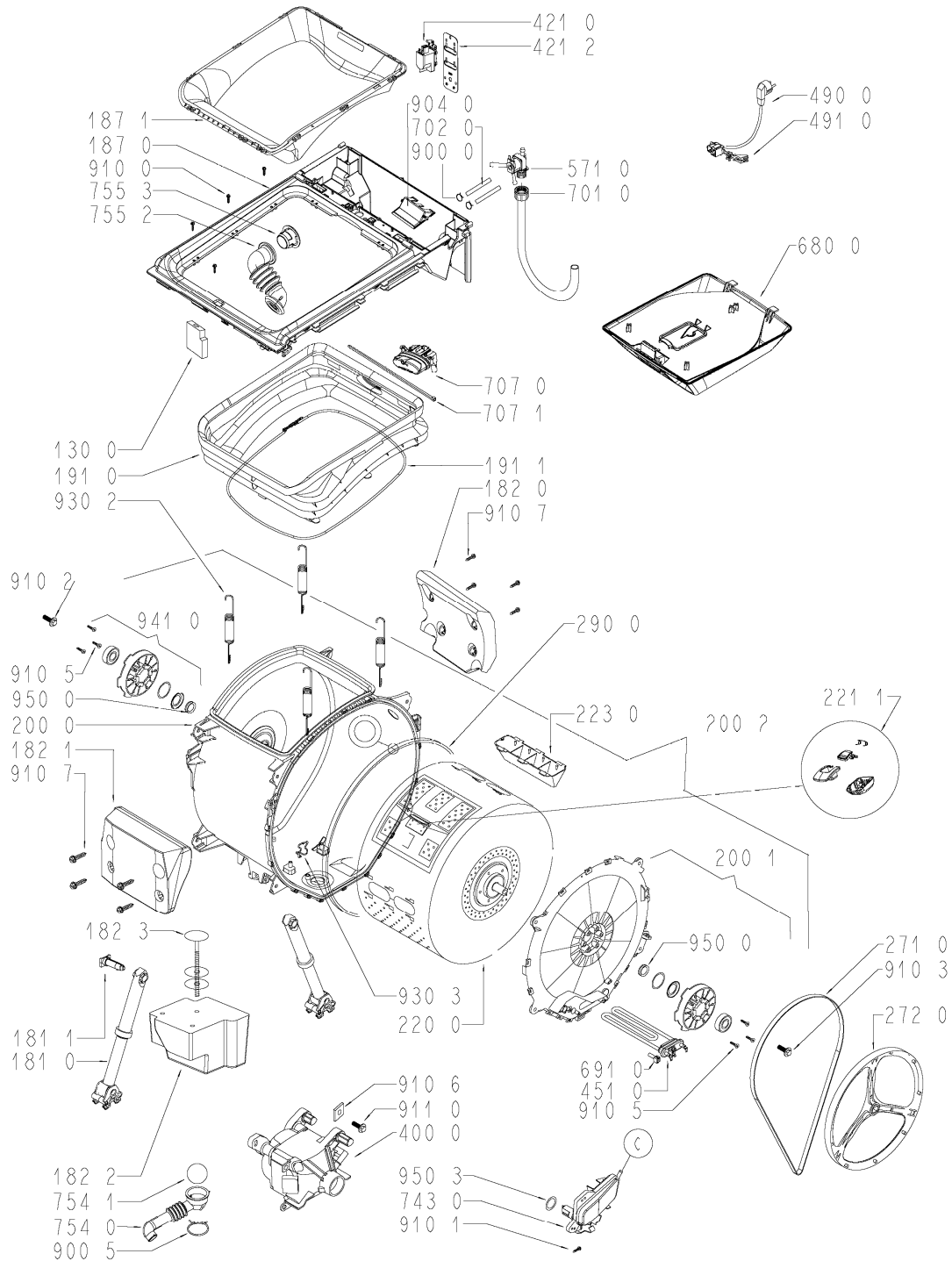
Pos	12NC	Description
3513	4810 107 64150	Light guide SD Opt.5, TL-R, F1, 15
3514	4810 714 25711	Light guide Display
4000	4810 105 25484	Motor HXGN1L.71
4210	4810 105 94593	Interf.filter
4212	4812 404 38679	Holder RFI
4300	4810 730 71153	Pump draining R2.5Y
4510	4810 104 96465	Heating element 2050W
4900	4819 321 18136	Cable mains 3X1620mm SA
4910	4812 321 28367	Strain relief.
5210	4810 108 08819	Control unit WAVE, progr.
5211	4810 107 89857	CCU, WAVE_2 ECO, K5A2, -/- GRN, VAR.SUP.
5710	4812 281 28468	Valve magnet 1 inlet, 2 outlets
5810	4812 271 28554	Pressostat
6800	4810 104 24468	Soap dispenser cpl.
6910	4812 282 19485	Sensor NTC
7010	4810 104 91637	Hose inlet 1,2 m
7020	4812 530 29453	Hose valve-dispenser
7070	4810 104 24466	Nozzle box cpl.
7071	4812 526 48049	Clamp f. nozzle box
7430	4812 418 68187	Chamber,air
7540	4812 530 28938	Drainhose
7541	4812 530 28832	Lock eco
7552	4812 530 29309	Hose Air Exhaust
7553	4812 530 29311	Cover of hose
7630	4812 480 58403	Filter
7810	4819 530 29035	Hose draining
7830	4812 530 28941	Hose Pressostat
9000	4812 401 18628	Clamp hose 15,5 mm
9001	4819 401 18872	Clamp hose.
9004	4812 401 18431	Clamp to pump
9005	4819 401 18529	Clamp hose
9009	4812 255 18304	Holder hose
9040	4812 281 18069	Cover for top frame
9041	4812 462 79974	Cap Transport blocking
9100	4812 502 48347	Screw,selftap 3,5x14
9101	4812 502 38151	Screw 4x14
9102	4801 101 00801	Screw M8x18
9103	4801 111 04699	Screw M8x22,5/DD
9105	4812 502 18423	Screw PT 7x15
9106	4801 111 02619	Nut M8
9107	4812 310 19224	Fixing mat.set Counter weight
9110	4812 502 18828	Screw Motor, kit
9301	4812 492 48171	Torsions spring
9302	4812 492 48162	Spring
9303	4812 290 18025	Clamp heating element
9410	4812 310 19144	Bearing kit ALL 1100
9500	4810 107 77092	Shaft seal V-22A
9503	4810 103 95017	Gasket airtrap
9930	4819 530 29028	U Curve for outlet hose

Exploded View



W10874520

Exploded View



W10874520

Technical Data

Dimensions + Weight

Product dimensions	
Height	90 cm
Width	40 cm
Depth	60 cm
Weight	
net	63 kg

Electrical base data

Voltage	230 V ± 10 %
Frequency	50 Hz
Fuse	10 A
Power Consumption	~2.3 kW

Drum data

Volume	42 l
Wash speed	52 rpm
Spinning	
max.	1000 rpm

Door lock

Kind of switch	Switch with PTC heater of bimetal
Nominal voltage	230 V +10 %, -15 %
Locking time	< 6 s
Unlock time	40 - 220 s

Pressostat

Level1	11 - 12/14
Overflow	11 - 16

Inlet valve

Nominal voltage	220 - 240 V / 50 Hz
Rated flow	(1.5 - 5 bar) 8 l/min
Pressure range	0.3 - 10 bar
Nominal resistance	(20 °C) 3.8 kΩ

Drain pump

Nominal voltage	220 - 240 V / 50 Hz
Total power	26 W
Resistor (coil)	224 Ω
Capacity	14 ± 2 l/min
Position of draining hose outlet	0.9 - 1.25 m

Heating element

Nominal voltage	230 V +10%, -15%
Total power	2050 W \pm 5%
Resistance (20 °C)	23.9/25.8 Ω \pm 5%
Leakage current	< 0.8 mA
NTC sensor	
Resistance NTC	

0 °C	35.9	k Ω
30 °C	9.8	k Ω
40 °C	6.6	k Ω
50 °C	4.6	k Ω
60 °C	3.2	k Ω
70 °C	2.3	k Ω
95 °C	1.1	k Ω

Motor

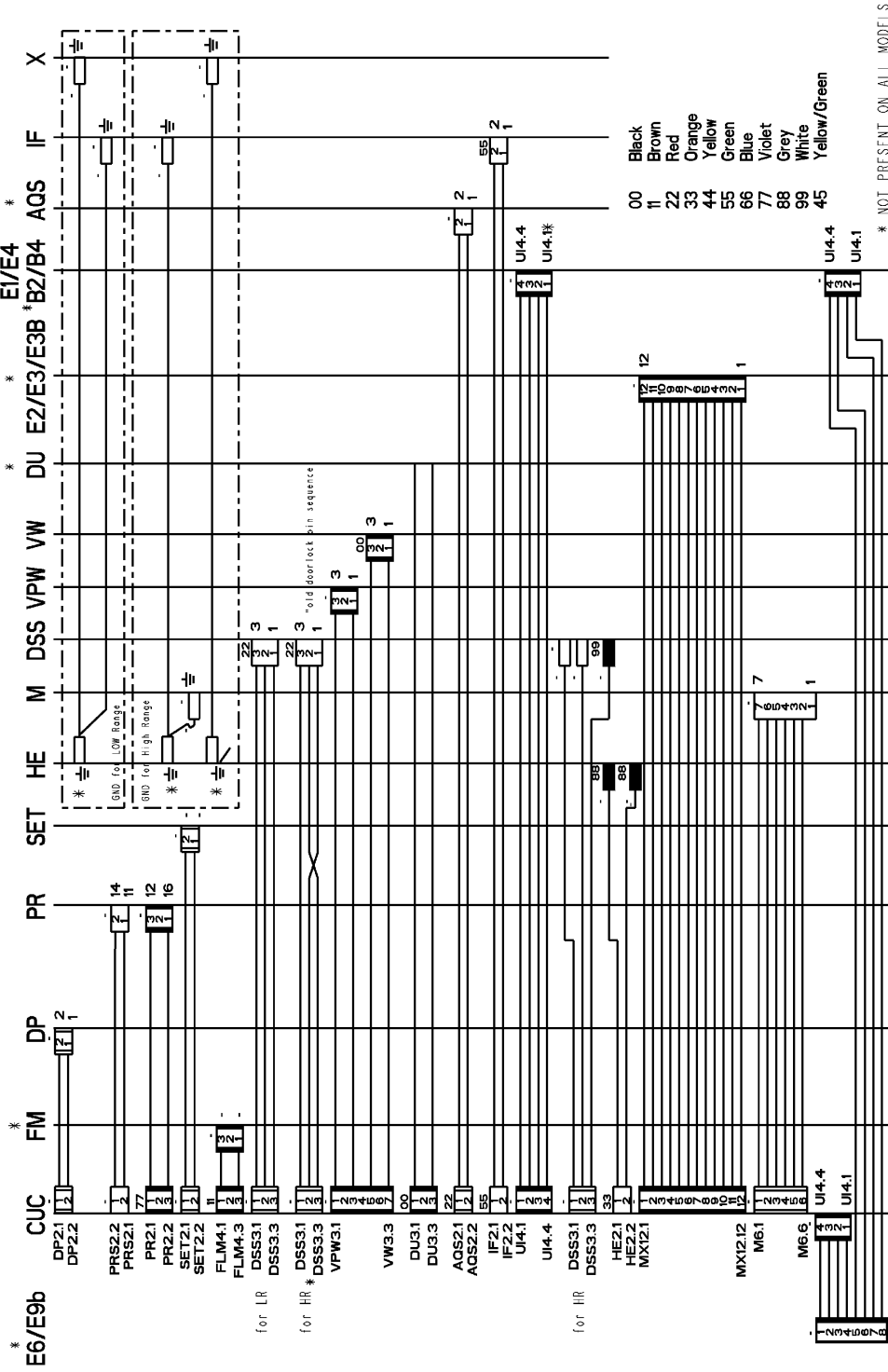
Resistance contacts	(20 °C)
Stator (full field)	2.00 Ω
Rotor	2.09 Ω
Tacho generator	66.60 Ω

Control unit

Type	WAVE
Nominal voltage	230 V - 240 V
Frequency	50 Hz
Output control unit	

Motor	M7.6 - DSS3.2	>40 V
Aquastop	AQ2.2 - DSS3.2	230 V
In pump step	AQ2.1 - DSS3.3	230 V
NTC	Not measurable	—
Pump	DP2.1 - DP2.2	230 V
Doorlock	DSS3.1 - DSS3.3	230 V
Pressostat	E4 - E2	230 V
- empty	PR2.1 - E2	230 V
- full	PR2.2 - E2	230 V
Valve (Rast 2.5)	V2.1 - V2.2	>170 V
Options	Not measurable	—

Wiring Diagram

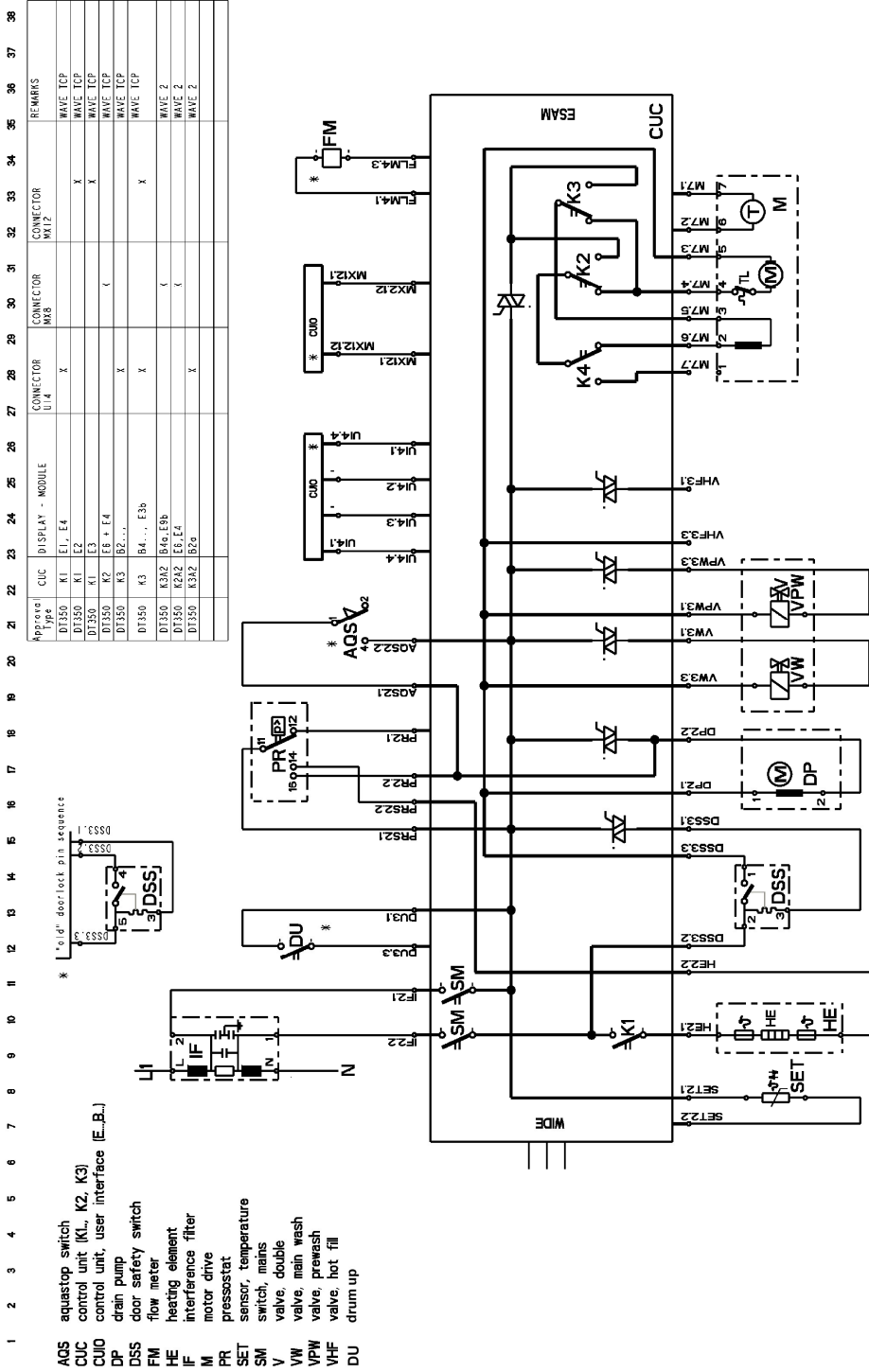


461973073111 B

Legend

00	black
11	brown
22	red
33	orange
44	yellow
55	green
66	blue
77	violet
88	grey
99	white
45	yellow/green

Circuit Diagram



* NOT PRESENT ON ALL MODELS

461973073111 B

Legend

AQS	aquastop switch
CUC	control unit (K1, K2, K3)
CUIO	control unit, user interface (E..., B...)
DP	drain pump
DSS	door safety switch
DU	drum up
FM	flow meter
HE	heating element
IF	interference filter
M	motor drive
PR	pressostat
SET	sensor, temperature
SM	switch, mains
V	valve, double
VW	valve, main wash
VPW	valve, prewash
VHF	valve, hot fill