

HIGH FREQUENCY WIDE BAND AMPLIFIERS

Type	Description	f MHz	Z ₀ ohm	VSWR typ.	G _{tr} dB	±ΔG _{tr} dB	F dB (kT ₀)	V _S V	Connectors	Fig.
HWA04	for pre-scalers	10-500	50		>22	<1		+24		1
HWA44	for low noise symmetrical pre-amplifiers	20-100	50	1.5	14-16		(<5)	+10	SMC	2
HWA45	for low noise gain controlled pre-amplifiers	20-100	50	1.5	14-16	<1	(<6)	+10	SMC	3
HWA56	for CATV systems and for VHF/UHF amplifiers	40-860	75	VHF 1.5 UHF (in) 2.5 UHF(out)3.5	> 24	VHF ≈ 0.5 UHF ≈ 2	< 6.5 typ: 5.5	+24		1
HWA60	for mixers and drivers	50-110	50	1.8	28-32	<1		+12	SMC	4, 5
HWA61		50-110	50	2.5	26-30	<1.5		+12	SMC	6, 7
HWA64	amplifier with low supply voltage	40-1000	50	2.5	15-19	<2	<6	+2...+5		4
HWA65	for ECL pre-scalers	40-1000	50	2.5	16-20	<2	<6	+5		4
HWA66		40-500	50	2.5	18-22	<2	<6	+5		4
HWA67	for aerial amplifiers	40-860	50	(in) 2.5 (out) 3.5	25-28	<1.5	VHF ≈ 5 UHF ≈ 6	+12		1

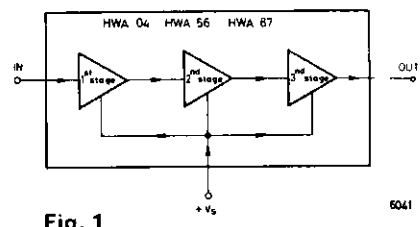


Fig. 1

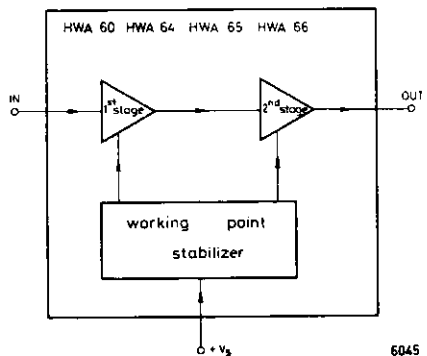


Fig. 4

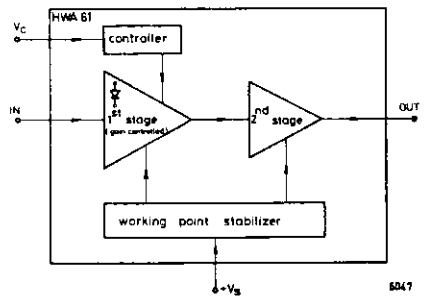


Fig. 6

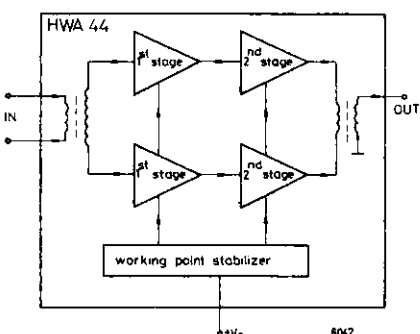


Fig. 2

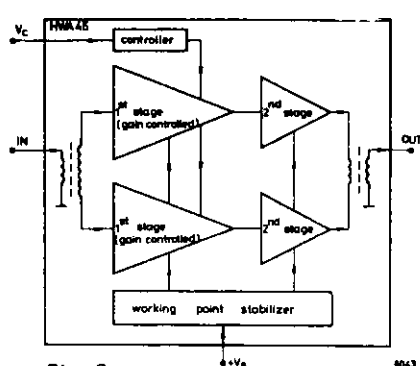


Fig. 3

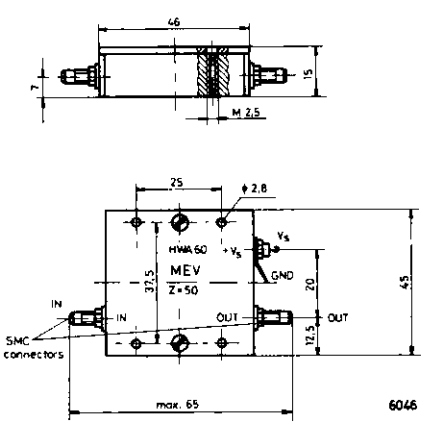


Fig. 5

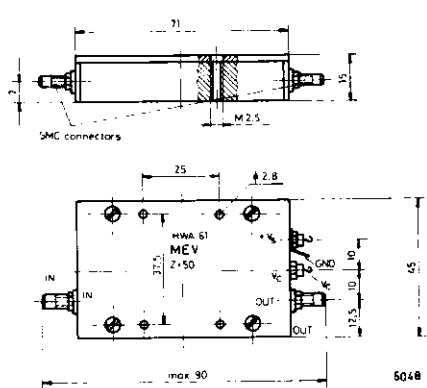


Fig. 7